

October 28, 2021

STATE OF RHODE ISLAND AND PROVIDENCE PLANTATION
DEPARTMENT OF ADMINISTRATION

DIVISION OF PURCHASES BID NO. 7658841

RHODE ISLAND DEPARTMENT OF TRANSPORTATION

RHODE ISLAND CONTRACT NO.2021-CT-062

FEDERAL-AID PROJECT NO. FAP Nos: 3RD-PRTY(312), STPG-HSIP(097)

Intersection Safety Improvements 2019 C2

Providence - Mount Pleasant Avenue between Smith Street (US Route 44) and Dover Street

Providence - North Main Street (US Route 1) at Doyle Avenue/Randall Street

Johnston - Hartford Avenue (US Route 6) at Bishop Hill Road

CITY/TOWN OF East Providence, Providence, Johnston, Barrington

COUNTY OF PROVIDENCE, BRISTOL

NOTICE TO PROSPECTIVE BIDDERS

ADDENDUM NO. 4 Prospective bidders and all concerned are hereby notified of the following changes in the Plans, Specifications, Proposal and Distribution of Quantities for this contract. These changes shall be incorporated in the Plans, Specifications, Proposal and Distribution of Quantities, and shall become an integral part of the Contract Documents.

A. Contract Dates

1. Bid-Opening Date

Bid-Opening Date Updated To "11/05/2021".

B. Specifications - Job Specific

1. JS Index

Delete Index Page JS-i(R-1) in its entirety and replace it with revised Index Page JS-i(R-2) attached to this Addendum No. 4. Item 202.9901, Load Haul, and Dispose Contaminated Soil, Type 2, has been deleted.

2. JS-12 through JS-16

Delete pages JS-12 through JS-16 in their entirety and replace them with revised pages JS-12(R-1) through JS-16(R-1) attached to this Addendum No. 4. The special provision for Item 202.9901, Load Haul, and Dispose Contaminated Soil, Type 2, has been deleted.

C. Distribution of Quantities

1. Index Pages

Delete Pages Index 1 through 6 in their entirety and replace them with revised Pages Index 1(R-1) through 6(R-1) attached to this Addendum No. 4. Item 202.9901, Load Haul, and Dispose Contaminated Soil, Type 2, has been deleted.

2. Page 12

Delete Page 12 in its entirety and replace it with revised Page 12(R-1), attached to this Addendum No. 4. Item 202.9901, Load Haul, and Dispose Contaminated Soil, Type 2, has been deleted.

D. Plans

1. Plans

Delete Sheet 10 – Construction Details 2 (R-2), Sheet 14 - Mount Pleasant Ave – General Plan 1(R-1), Sheet 24 - Mount Pleasant Ave – General Plan 11(R-1), Sheet 45 - Mount Pleasant Ave – Drainage & Utility Plan 10(R-1), Sheet 56 – Mount Pleasant Ave – Signing & Striping Plan 10(R-1), Sheet 57 – Mount Pleasant Ave – Signing & Striping Plan 11(R-1), and Sheet 60 – Signal Plan 3(R-1) in their entirety and replace them with revised Sheet 10 – Construction Details 2 (R-3), Sheet 14 - Mount Pleasant Ave – General Plan 1(R-2), Sheet 24 - Mount Pleasant Ave – General Plan 11(R-2), Sheet 45 - Mount Pleasant Ave – Drainage & Utility Plan 10(R-2), Sheet 56 – Mount Pleasant Ave – Signing & Striping Plan 10(R-2), Sheet 57 – Mount Pleasant Ave – Signing & Striping Plan 11(R-2), and Sheet 60 – Signal Plan 3(R-2), attached to this Addendum No. 4. The Sheet numbers have been corrected.



RI Department of Transportation

Administrator, Division of Project Management

**INDEX
SPECIFICATIONS – JOB SPECIFIC**

(R-2)

<u>CODE</u>	<u>TITLE</u>	<u>PAGE</u>
108.03	Prosecution and Progress	JS-1
108.1000	Prosecution and Progress	JS-2
201.9902	Removal and Stockpile Private Sign – “Dairy Creme”	JS-3
201.9903	Removal and Stockpile Onsite Private Sign Including Base and Mailbox	JS-4
201.9904	Remove and Reset Bike Racks	JS-5
201.9905	Handling, Hauling, and Stockpiling of Contaminated Soil for Reuse	JS-6
201.9906	Remove and Dispose Fire Hydrant and Appurtenances – Bishop Hill Road	JS-8
201.9918	Health and Safety Requirements	JS-9
202.9901	Load, Haul, and Dispose Contaminated Soil, Type 2	JS-12
202.9903	Contaminated Soil Excavation	JS-17
202.9920	Analytical Testing Requirements for Imported Soil	JS-21
403.9901	Rubberized Joint Sealer	JS-27
702.9901	Sidewalk Manhole Frame and Cover Providence Standard 6.1.1	JS-28
702.9902	Heavy Duty Manhole Frame and Cover – 24” Providence Standard 6.2.1	
702.9903	High Capacity Grate and Four Flange Frame Providence Standard 6.3.5	
702.9904	Rectangular Frame and Grate Providence Standard 6.3.6	
702.9905	Granite Inlet Stone – 24” Opening Providence Standard 7.3.6	JS-30
702.9906	Special Manhole – 4 Foot Doghouse	JS-31
799.	Providence Water Authority	JS-33
906.9901	6’-0” Granite Transition Curb Providence Standard 7.3.2 – 7”	JS-34
906.9903	Granite Ramp Stone Providence Standard 7.3.9 – 7” Straight	
906.9904	Granite Ramp Stone Providence Standard 7.3.9 – 7” Curved	
906.9905	Granite 2”-0” Radius Curb Return Providence Standard 7.3.4	
906.9907	Granite Wheelchair Ramp Transition Curb Providence Standard 7.3.3 – 7”	
937.1000	Maintenance and Movement of Traffic Protection	JS-35
938.1000	Price Adjustments	JS-36

JOB SPECIFIC

CODE 202.9901

LOAD, HAUL, AND DISPOSE CONTAMINATED SOIL, TYPE 2

THIS ITEM HAS BEEN DELETED.

PAGE INTENTIONALLY LEFT BLANK

PAGE INTENTIONALLY LEFT BLANK

PAGE INTENTIONALLY LEFT BLANK

PAGE INTENTIONALLY LEFT BLANK

Table of Contents - Distribution of Quantities

Project Name - Intersection Safety Improvements 2019 C2

Estimate Name - Addendum No. 4

R.I. Contract No. - 2021-CT-062

FAP Nos: 3RD-PRTY(312), STPG-HSIP(097)

ItemCode	Description	Page
201.0301	CUTTING AND DISPOSING ISOLATED TREES AND STUMPS (4" - 24")	1
201.0322	CLEARING AND GRUBBING	1
201.0401	REMOVE AND DISPOSE GRANITE CURB	1
201.0402	REMOVE AND DISPOSE CONCRETE CURB	2
201.0403	REMOVE AND DISPOSE SIDEWALKS	3
201.0407	REMOVE AND DISPOSE PAVEMENT AND RIGID BASE	5
201.0409	REMOVE AND DISPOSE FLEXIBLE PAVEMENT	5
201.0410	REMOVE AND DISPOSE CATCH BASINS	6
201.0414	REMOVE AND DISPOSE PIPE - ALL SIZES	6
201.0415	REMOVE AND DISPOSE GUARDRAIL AND POST ALL TYPES	6
201.0423	REMOVE AND DISPOSE HANDHOLE	7
201.0428	REMOVE AND DISPOSE FRAME AND GRATE OR FRAME AND COVER	7
201.0450	REMOVE AND STOCKPILE ON SITE GRANITE CURB	7
201.0453	REMOVE AND STOCKPILE ON SITE FRAME GRATES AND COVERS	9
201.0610	REMOVE AND DISPOSE DIRECTIONAL, WARNING, REGULATORY, SERVICE, AND STREET SIGNS	9
201.0613	REMOVE AND STOCKPILE LIGHT STANDARDS	10
201.0616	REMOVE AND DISPOSE LIGHT STANDARD FOUNDATIONS	10
201.0617	REMOVE AND DISPOSE CONDUIT - ALL SIZES	10
201.9901	REMOVE AND DISPOSE DELINEATOR AND POST	10
201.9902	REMOVE AND STOCKPILE ON SITE PRIVATE SIGN - "DAIRY CREME"	11
201.9903	REMOVE AND STOCKPILE ON SITE PRIVATE SIGN INCLUDING BASE AND MAILBOX	11
201.9904	REMOVE AND RESET BIKE RACKS	11
201.9905	** ITEM DELETED **	11
201.9906	REMOVE AND DISPOSE FIRE HYDRANT AND APPURTENANCES - BISHOP HILL ROAD	12
202.0100	EARTH EXCAVATION	12
202.9901	** ITEM DELETED **	12
202.9903	CONTAMINATED SOIL EXCAVATION	13
204.0100	TRIMMING AND FINE GRADING	13
206.0301	COMPOST FILTER SOCK	13
206.0312	COMPOST FILTER SOCK 12 INCH DIAMETER	14
209.0200	SACK INSERT CATCH BASIN INLET PROTECTION	14
212.2100	MAINTENANCE AND CLEANING OF EROSION AND POLLUTION CONTROLS	15
213.0100	PLACEMENT OF MILLINGS BENEATH GUARDRAIL	15
302.0100	GRAVEL BORROW SUBBASE COURSE	15
401.1100	** ITEM DELETED **	16
401.2000	CLASS 12.5 HMA	16
401.3000	CLASS 9.5 HMA	17
401.3003	CLASS 9.5 HMA FOR PATCHING	18
401.3100	MODIFIED CLASS 9.5 HMA	18
403.0300	ASPHALT EMULSION TACK COAT	18
403.9901	RUBBERIZED JOINT SEALER	19
501.0103	PORTLAND CEMENT CONCRETE BASE	19
502.1000	FULL DEPTH CLEANING AND SEALING OF JOINTS AND CRACKS 2- 1/2" NOM. WIDTH OR LESS IN PCC PAVEMENT	19
503.1010	REPAIRING DETERIORATED/DAMAGED JOINTS 2 1/2" TO 8" NOM. WIDTH IN FINISHED PCC PAVEMENT	20
601.0300	CLASS A PORTLAND CEMENT CONCRETE	20
701.0612	REINFORCED CONCRETE PIPE M 170 CLASS V 12 INCH	21
701.4312	12 INCH SMOOTH INTERIOR CORRUGATED POLYETHYLENE PIPE	22
701.5206	6 INCH DUCTILE IRON WATER PIPE CLASS 52, RESTRAINED JOINT	22

Table of Contents - Distribution of Quantities

Project Name - Intersection Safety Improvements 2019 C2

Estimate Name - Addendum No. 4

R.I. Contract No. - 2021-CT-062

FAP Nos: 3RD-PRTY(312), STPG-HSIP(097)

ItemCode	Description	Page
701.9901	12" X 6" TAPPING SLEEVE AND VALVE WITH GATE BOX	22
702.0511	FRAME AND COVER STANDARD 6.1.0	22
702.0513	FRAME AND GRATE STANDARD 6.3.1	22
702.0521	FRAME AND COVER STANDARD 6.2.0	23
702.0605	PRECAST CATCH BASIN 4' DIAMETER STANDARD 4.4.0	23
702.0630	PRECAST MANHOLE 4' DIAMETER STANDARD 4.2.0	23
702.0711	DROP INLET BRICK STANDARD 3.6.0	23
702.0712	PRECAST CONCRETE DROP INLET STANDARD 4.5.0	24
702.0729	PRECAST CONCRETE DROP INLET, LATERAL OUTLET STANDARD 4.5.1	24
702.0730	PRECAST CONCRETE DROP INLET, LONGITUDINAL OUTLET STANDARD 4.5.2	24
702.9901	SIDEWALK MANHOLE FRAME AND COVER PROVIDENCE STANDARD 6.1.1	25
702.9902	HEAVY DUTY MANHOLE FRAME AND COVER - 24 INCH PROVIDENCE STANDARD 6.2.1	25
702.9905	GRANITE INLET STONE - 24" OPENING PROVIDENCE STANDARD 7.3.6	25
702.9906	SPECIAL MANHOLE - 4 FOOT DOGHOUSE	26
702.9907	FURNISH AND INSTALL NEW FRAME AND GRATE PROV. STD 6.3.4P	26
702.9908	FURNISH AND INSTALL CLEANOUT FRAME AND COVER PROVIDENCE STANDARD	27
702.9909	GRANITE APRON STONE - 24" OPENING STD 7.3.7 P	27
702.9910	GRANITE INLET STONE, 5-FOOT, STANDARD 7.3.5P	28
702.9911	HIGH CAPACITY GRATE AND THREE FLANGE FRAME PROVIDENCE STANDARD 6.3.4	28
702.9912	RECTANGULAR FRAME AND GRATE PROVIDENCE STANDARD 6.3.6	28
704.0300	RECONSTRUCT CATCH BASIN/VERTICAL WALLS	29
704.0400	RECONSTRUCT MANHOLE/VERTICAL WALLS	29
707.0900	ADJUST MANHOLES TO GRADE	29
707.0950	ADJUST TELEPHONE MANHOLE TO GRADE	30
707.0955	ADJUST ELECTRICAL MANHOLE TO GRADE	30
707.1000	ADJUST SANITARY MANHOLE	30
707.1200	ADJUST CATCH BASIN TO MANHOLE	31
707.1900	ADJUST FRAME & COVER TO GRADE	32
707.2000	ADJUST FRAME AND GRATE TO GRADE	32
708.9040	CLEANING AND FLUSHING PIPE ALL SIZES	32
708.9041	CLEANING CATCH BASINS ALL TYPES AND SIZES	33
708.9042	CLEANING MANHOLES ALL TYPES AND SIZES	34
709.8103	FURNISH & INSTALL CEMENT CONCRETE CLASS B THRUST & ANCHOR BLOCKS CAST-IN-PLACE	35
712.0100	WATER GATE BOX	35
712.0200	GAS GATE BOX	35
713.8268	ADJUST CURB STOP BOX TO GRADE	36
713.8269	ADJUST WATER GATE BOXES TO GRADE	36
713.8300	ADJUST GAS GATE BOXES TO GRADE	37
714.8163	POST TYPE HYDRANT	38
714.8263	REMOVE AND RELOCATE POST TYPE HYDRANT	38
901.0101	GUARDRAIL STEEL BEAM SINGLE FACE EARTH AND ASPHALT	38
901.0191	GUARDRAIL STEEL BEAM ANCHORAGE TRAILING END SECTION STANDARD 34.3.4	38
901.0199	GUARDRAIL END TREATMENT, ENERGY ABSORBING TERMINAL	38
905.0110	PORTLAND CEMENT SIDEWALK MONOLITHIC STANDARD 43.1.0	38
905.0115	PORTLAND CEMENT CONCRETE DRIVEWAY STANDARD 43.5.0	41
905.0131	PORTLAND CEMENT CONCRETE MEDIAN 6' MONOLITHIC	42

Table of Contents - Distribution of Quantities

Project Name - Intersection Safety Improvements 2019 C2

Estimate Name - Addendum No. 4

R.I. Contract No. - 2021-CT-062

FAP Nos: 3RD-PTY(312), STPG-HSIP(097)

ItemCode	Description	Page
906.0112	GRANITE CURB PROVIDENCE STANDARD 7" STRAIGHT	43
906.0113	GRANITE CURB PROVIDENCE STANDARD 7" CIRCULAR	44
906.0210	CEMENT CONCRETE CURB PRECAST STRAIGHT STANDARD 7.1.0	46
906.0211	CEMENT CONCRETE CURB PRECAST CIRCULAR STANDARD 7.1.0	46
906.0221	6' PRECAST CONCRETE TRANSITION CURB STANDARD 7.1.2	46
906.0250	PRECAST CONCRETE WHEELCHAIR RAMP CURB STANDARDS 7.1.3, 43.3.0 AND 43.3.1	47
906.0562	CEMENT CONCRETE EDGING 24 INCH LOT CURB STANDARD 7.2.3	47
906.0700	REMOVE, HANDLE, HAUL TRIM RESET CURB EDGING, STRAIGHT, CIRCULAR ALL TYPES	47
906.9901	6'-0" GRANITE TRANSITION CURB PROVIDENCE STANDARD 7.3.2 - 7"	49
906.9903	GRANITE RAMP STONE PROVIDENCE STANDARD 7.3.9 - 7" STRAIGHT	50
906.9904	GRANITE RAMP STONE PROVIDENCE STANDARD 7.3.9 - 7" CURVED	51
906.9905	GRANITE 2'-0" RADIUS CURB RETURN PROVIDENCE STANDARD 7.3.4	51
906.9906	GRANITE WHEELCHAIR RAMP TRANSITION CURB PROVIDENCE STD	52
906.9907	FURNISH AND INSTALL GRANITE INLET OR APRON STONE 7" WIDTH	53
907.0100	WATER FOR DUST CONTROL	54
914.5010	FLAGPERSONS	54
914.5020	FLAGPERSONS - OVERTIME	54
915.0200	HIGHWAY BOUNDS REINFORCED CONCRETE STANDARD 14.1.0	54
915.0240	REMOVE AND RESET HIGHWAY BOUNDS (ALL TYPES)	55
919.0101	TEST PITS	55
922.0100	TEMPORARY CONSTRUCTION SIGNS STANDARD 29.1.0 AND 27.1.1	55
923.0105	DRUM BARRICADE STANDARD 26.2.0	56
923.0125	PLASTIC PIPE TYPE III BARRICADE STANDARD 26.3.1	56
923.0200	FLUORESCENT TRAFFIC CONES STANDARD 26.1.0	56
924.0113	ADVANCE WARNING ARROW PANEL	56
925.0112	PORTABLE CHANGEABLE MESSAGE SIGN	56
928.0500	SHADOW OR ADVANCE WARNING VEHICLE WITH IMPACT ATTENUATOR AND FLASHING ARROW BOARD	57
929.0110	FIELD OFFICE	57
931.0110	CLEANING AND SWEEPING PAVEMENT	57
932.0100	CUTTING AND MATCHING ASPHALT	57
932.0200	FULL-DEPTH SAWCUT OF BITUMINOUS PAVEMENT	59
932.0210	FULL DEPTH SAWCUT OF BITUMINOUS PAVEMENT AND RIGID BASE	62
932.0220	FULL DEPTH SAWCUT OF BITUMINOUS SIDEWALK/DRIVEWAY	63
932.0230	FULL DEPTH SAWCUT OF PORTLAND CEMENT CONCRETE SIDEWALK/DRIVEWAY	64
935.0400	REMOVING BITUMINOUS PAVEMENT BY MICRO MILLING	65
936.0110	** ITEM DELETED **	66
937.0200	MAINTENANCE AND MOVEMENT TRAFFIC PROTECTION	66
942.0200	DETECTABLE WARNING PANEL STANDARD 48.1.0	66
945.9911	REMOVE AND SALVAGE TRAFFIC SIGNAL EQUIPMENT - SIGNAL NO. 522	70
945.9912	REMOVE AND SALVAGE TRAFFIC SIGNAL EQUIPMENT - MOUNT PLEASANT AVENUE/COLLEGE ROAD/LESLIE DRIVE	70
945.9913	REMOVE AND SALVAGE TRAFFIC SIGNAL EQUIPMENT - MOUNT PLEASANT AVENUE/CHALKSTONE AVENUE	70
945.9915	REMOVE AND SALVAGE TRAFFIC SIGNAL EQUIPMENT - SIGNAL NO. 824	71
945.9916	REMOVE AND SALVAGE TRAFFIC SIGNAL EQUIPMENT - HARTFORD AVENUE/BISHOP HILL ROAD	71

Table of Contents - Distribution of Quantities

Project Name - Intersection Safety Improvements 2019 C2

Estimate Name - Addendum No. 4

R.I. Contract No. - 2021-CT-062

FAP Nos: 3RD-PRTY(312), STPG-HSIP(097)

ItemCode	Description	Page
945.9917	REMOVE AND DISPOSE TRAFFIC SIGNAL EQUIPMENT - FLASHING SCHOOL ZONE SIGN ASSEMBLY	71
999.9901	MISCELLANEOUS WORK	71
L01.0102	LOAM BORROW 4 INCHES DEEP	71
L01.0104	PLANTABLE SOIL 4 INCHES DEEP	73
L02.0101	GENERAL HIGHWAY SEEDING (TYPE 1)	73
L02.0102	RESIDENTIAL SEEDING (TYPE 2)	73
L05.0506	JUTE MESH	73
L06.9901	ZELKOVA SERRATA, "GREEN VASE" - 2" CALIPER	73
L10.0101	MECHANICAL TREE AND SHRUB ROOT PRUNING	74
L11.0102	TREE PLANT PROTECTION DEVICE STANDARD 51.1.0	75
L11.0104	DRIP-LINE TREE PROTECTION DEVICE STANDARD 51.1.1	77
T04.5001	6 AWG SINGLE CONDUCTOR CABLE 600V INSULATION	77
T04.5302	14 AWG 2 CONDUCTOR TWISTED SHIELDED CABLE	78
T04.5303	14 AWG 3 CONDUCTOR CABLE	78
T04.5305	14 AWG 5 CONDUCTOR CABLE	81
T04.6910	'10' STRANDED COPPER CONDUCTOR 600V INSULATION	83
T04.9901	OPTICALDETECTOR CABLE	84
T05.0100	PRECAST TYPE A HANDHOLE STANDARD 18.2.0	84
T05.0400	BREAK INTO EXISTING HANDHOLE	84
T05.1030	ADJUST HANDHOLE TO GRADE	85
T06.1020	2 IN. RIGID STEEL CONDUIT - UNDERGROUND	85
T06.1030	3 IN. RIGID STEEL CONDUIT-UNDERGROUND	86
T06.2020	2 IN. RIGID STEEL CONDUIT-OVERHEAD	86
T06.5130	3 INCH SCHEDULE 40 POLYVINYL CHLORIDE PLASTIC CONDUIT - UNDERGROUND	87
T06.5330	3 INCH SCHEDULE 40 POLYVINYL CHLORIDE PLASTIC CONDUIT - UNDER EXISTING PAVEMENT	87
T06.5430	3 INCH SCHEDULE 80 POLYVINYL CHLORIDE PLASTIC CONDUIT - UNDER EXISTING PAVEMENT	88
T06.6020	2 INCH POLYVINYL CHLORIDE PLASTIC CONDUIT-OVERHEAD	89
T07.9901	FURNISH AND INSTALL 145-165 WATT LED LUMINAIRE	89
T08.0100	LIGHT STANDARD FOUNDATION WITH ANCHOR BOLTS STANDARD 18.1.0	89
T08.2031	ALUMINUM LIGHTING STD. 30 FT. W/ SINGLE DAVIT ARM EXTN. 10 FT. STANDARD 18.3.0	90
T11.2008	TRAFFIC SIGNAL STANDARD,8 FOOT,STD 19.4.0 ALUMINUM PEDESTAL POLE AND FOUNDATION	90
T11.2010	TRAFFIC SIGNAL STANDARD,10 FT, STD 19.4.0 ALUMINUM PEDESTAL POLE AND FOUNDATION	91
T11.9901	55 FOOT GALVANIZED STEEL MAST ARM TRAFFIC SIGNAL POST AND FOUNDATION STD. 19.2.0	91
T12.0018	ACTUATED CONTROLLER TS-2, TYPE 1 W/8 PHASE ASSEMBLY GROUND MOUNTED INCLUDING FOUNDATION AND CABINET STD. 19.1.0	92
T12.9150	METER SOCKET W/MANUAL BY-PASS	92
T12.9901	MODIFY EXISTING TRAFFIC SIGNAL CONTROLLER/CABINET	92
T13.1000	TRAFFIC DETECTORS-LOOP, STANDARD 19.6.0	92
T13.1004	TRAFFIC DETECTOR RELAY-LOOP 4 CHANNEL	94
T13.8210	ACCESSIBLE PEDESTRIAN DETECTOR - PUSHBUTTON WITH SIGN	94
T13.9901	OPTICAL PHASE SELECTOR AND CHASSIS, FOUR CHANNEL	96
T13.9902	OPTICAL DETECTOR - SINGLE CHANNEL, ONE-WAY	96
T13.9903	OPTICAL DETECTOR CONFIRMATION BEACON	96
T14.3413	1 WAY 3 SECTION SPAN MOUNTED SIGNAL HEAD 12 INCH	96
T14.3513	1 WAY 3 SECTION MAST ARM MOUNTED SIGNAL HEAD 12 INCH	96

Table of Contents - Distribution of Quantities

Project Name - Intersection Safety Improvements 2019 C2

Estimate Name - Addendum No. 4

R.I. Contract No. - 2021-CT-062

FAP Nos: 3RD-PTY(312), STPG-HSIP(097)

ItemCode	Description	Page
T14.3613	1 WAY 3 SECTION BRACKET MOUNTED SIGNAL HEAD 12 INCH	96
T14.3713	1 WAY 3 SECTION PEDESTAL MOUNTED SIGNAL HEAD 12 INCH	97
T14.9901	1-WAY PEDESTAL MOUNTED L.E.D. PEDESTRIAN SIGNAL HEAD WITH COUNTDOWN TIMER, 12-INCH	97
T14.9902	2-WAY PEDESTAL MOUNTED L.E.D. PEDESTRIAN SIGNAL HEAD WITH COUNTDOWN TIMER, 12-INCH	98
T14.9903	1-WAY BRACKET MOUNTED L.E.D. PEDESTRIAN SIGNAL HEAD WITH COUNTDOWN TIMER, 12-INCH	98
T15.0100	DIRECTIONAL REGULATORY AND WARNING SIGNS	99
T15.1100	STREET SIGN - OVERHEAD MOUNTED	106
T15.9901	FLASHING SCHOOL ZONE SIGN ASSEMBLY	106
T15.9902	RECTANGULAR RAPID FLASHING BEACON ASSEMBLY	106
T15.9903	IN-STREET PEDESTRIAN X-ING SIGN W/SPRING LOADED PORTABLE SIGN BASE	107
T15.9910	REMOVE AND RELOCATE SIGN	107
T20.0706	6 INCH WHITE WATERBORNE PAINT PAVEMENT MARKINGS	107
T20.0712	12 INCH WHITE WATERBORNE PAINT PAVEMENT MARKINGS	108
T20.0904	4 INCH YELLOW WATERBORNE PAINT PAVEMENT MARKINGS	108
T20.1401	WATERBORNE PAINT PAVEMENT MARKING SYMBOL - ARROW (STRAIGHT, LEFT, RIGHT OR COMBINED) STANDARD 20.1.0	108
T20.1405	WATERBORNE PAINT PAVEMENT MARKING SYMBOL - YIELD LINE TRIANGLE (ALL SIZES)	108
T20.1410	WATERBORNE PAINT PAVEMENT MARKING WORD ("ONLY", "STOP", "YIELD", "AHEAD", "XING", "SCHOOL", OR OTHER) STANDARD 20.1.0	109
T20.1416	** ITEM DELETED **	109
T20.2406	6 INCH WHITE FINAL EPOXY RESIN PAVEMENT MARKINGS	109
T20.2412	12 INCH WHITE FINAL EPOXY RESIN PAVEMENT MARKINGS	110
T20.2804	4 INCH YELLOW FINAL EPOXY RESIN PAVEMENT MARKINGS	111
T20.2806	6 INCH YELLOW FINAL EPOXY RESIN PAVEMENT MARKINGS	112
T20.2812	12 INCH YELLOW FINAL EPOXY RESIN PAVEMENT MARKINGS	112
T20.3401	FINAL EPOXY RESIN PAVEMENT MARKING SYMBOL - ARROW (STRAIGHT, LEFT, RIGHT OR COMBINED) STANDARD 20.1.0	112
T20.3403	FINAL EPOXY RESIN PAVEMENT MARKING SYMBOL - LANE REDUCTION ARROW (LEFT OR RIGHT)	113
T20.3405	FINAL EPOXY RESIN PAVEMENT MARKING SYMBOL - YIELD LINE TRIANGLE (ALL SIZES)	113
T20.3410	FINAL EPOXY RESIN PAVEMENT MARKING WORD ("ONLY", "STOP", "YIELD", "AHEAD", "XING", "SCHOOL", OR OTHER) STANDARD 20.1.0	113
T20.3416	** ITEM DELETED **	114
T20.3417	** ITEM DELETED **	114

Table of Contents - Distribution of Quantities

Project Name - Intersection Safety Improvements 2019 C2
Estimate Name - Addendum No. 4
R.I. Contract No. - 2021-CT-062
FAP Nos: 3RD-PTY(312), STPG-HSIP(097)

ItemCode	Description	Page
T20.9905	EPOXY RESIN PAVEMENT MARKINGS SPEED TABLE ARROW	115
202.9911	LOAD AND HAUL CONTAMINATED SOILS - TYPE 2	115
202.9912	DISPOSAL OF CONTAMINATED SOILS -TYPE 2	115
401.3005	CLASS 9.5 HMA FOR MISCELLANEOUS WORK	115
401.1000	CLASS 19.0 HMA	116
936.0100	MOBILIZATION AND DEMOBILIZATION	116

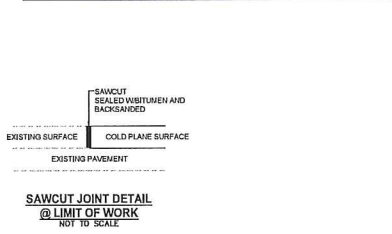
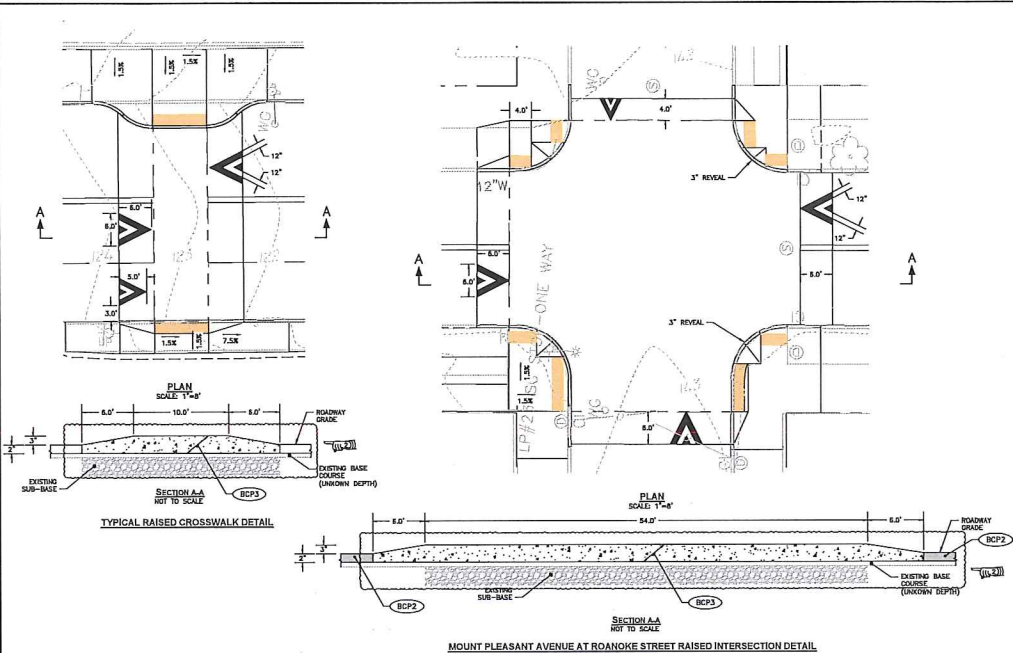
Distribution of Quantities

Project Name - Intersection Safety Improvements 2019 C2
 Estimate Name - Addendum No. 4
 R.I. Contract No. - 2021-CT-062
 FAP Nos: 3RD-PRTY(312), STPG-HSIP(097)

Item No.	Item Code	Description	UM	Qty.	Pay Code	Seq. No.
024	201.9906	REMOVE AND DISPOSE FIRE HYDRANT AND APPURTENANCES - BISHOP HILL ROAD RTE. 6/BISHOP HILL RD. 264+08 RT	LS	1.00	0021	01
Item 201.9906 Total:				1.00		
025	202.0100	EARTH EXCAVATION MOUNT PLEASANT AVENUE FROM ITEM 905.0110 FROM ITEM 905.0115 FROM ITEM L01.0102 NORTH MAIN ST./RANDALL ST./DOYLE AVE. FROM ITEM 905.0110 FROM ITEM 905.0113 FROM ITEM 905.0131 FROM ITEM L02.0102 PROJECT WIDE AS DIRECTED BY THE ENGINEER RTE. 6/BISHOP HILL RD. FROM ITEM 401.1100 FROM ITEM 401.3000 FROM ITEM 905.0110 FROM ITEM L01.0104	CY			
Item 202.0100 Total:				2,700.00		

NO. REV.	DATE	DESIGNED BY	CHECKED BY	SCALE	SHEET NO.	TOTAL SHEETS
		RI			10	77

R-3



ADDENDUM NO. 4



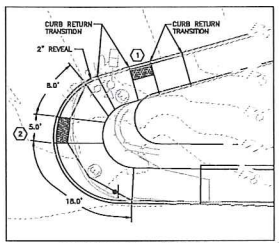
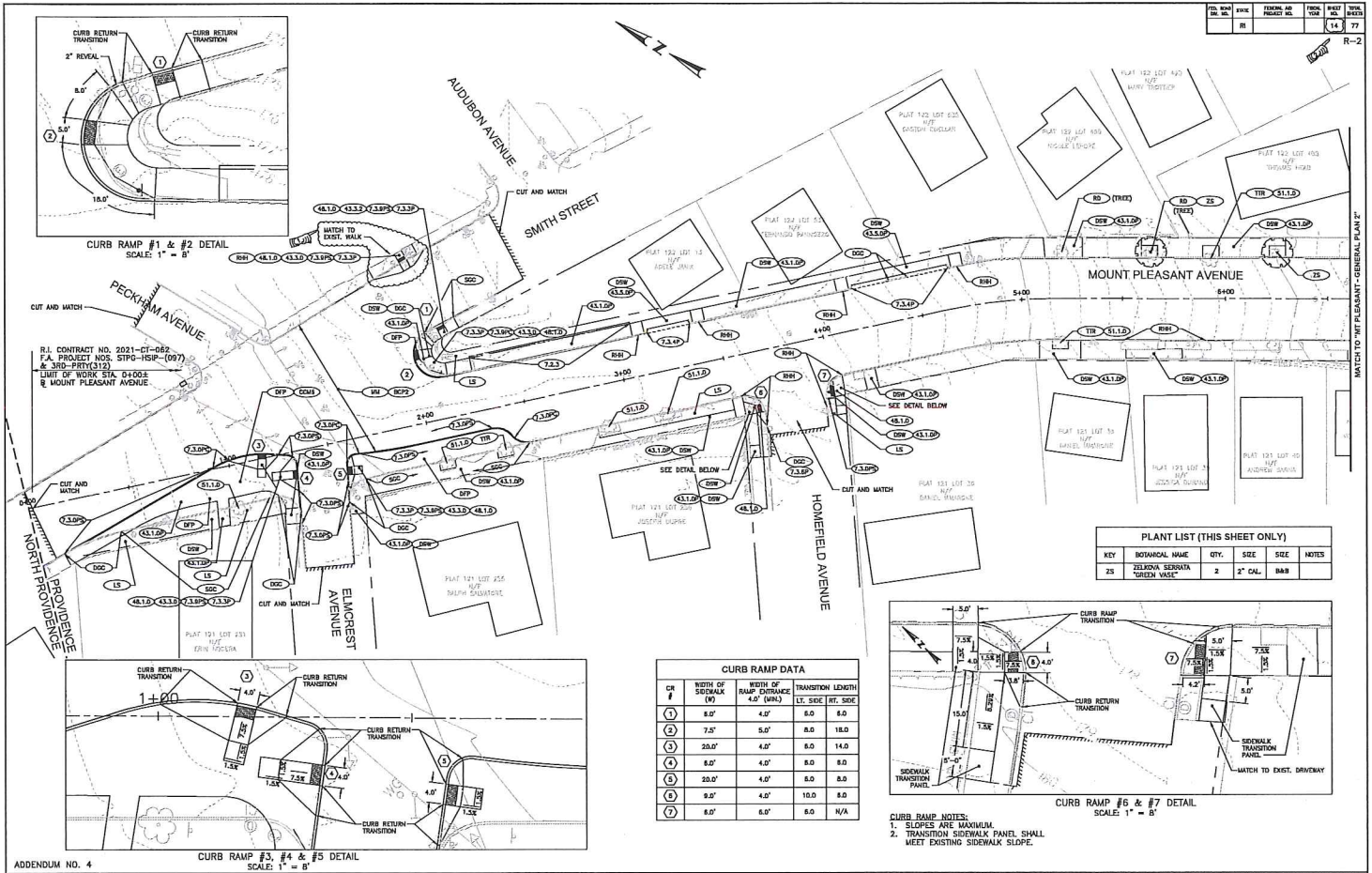
DESIGNED BY	AS SHOWN
CHECKED BY	
DATE	SEPTEMBER 2011
SPEED	15
DT	77

HIGHWAY SAFETY IMPROVEMENT PROGRAM	
INTERSECTION SAFETY IMPROVEMENTS - STATEWIDE	
PROJ. NO. & LOCATION	RHODE ISLAND
CONSTRUCTION DETAILS 2	

F:\FILES\049\1667\PROJECT PLANS\00252_V1_DOT_DETAILS_ADD_004.DWG

NO.	DATE	BY	REVISION
14	77		

R-2



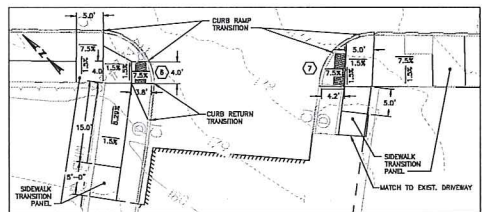
CURB RAMP #1 & #2 DETAIL
SCALE: 1" = 8'

PLANT LIST (THIS SHEET ONLY)

KEY	INSTANTIAL NAME	QTY.	SIZE	SIZE	NOTES
ZS	ZELKONA SERRATA "GREEN VASE"	2	2"	2"	BAR

CURB RAMP DATA

CR #	WIDTH OF SIDEWALK (W)	WIDTH OF RAMP DISTANCE (W _R)	TRANSITION LENGTH	
			LT. SIDE	RT. SIDE
1	8.0'	4.0'	8.0	8.0
2	7.5'	5.0'	8.0	18.0
3	20.0'	4.0'	8.0	14.0
4	8.0'	4.0'	8.0	8.0
5	20.0'	4.0'	8.0	8.0
6	9.0'	4.0'	10.0	8.0
7	8.0'	6.0'	8.0	N/A



CURB RAMP #6 & #7 DETAIL
SCALE: 1" = 8'

- CURB RAMP NOTES:
1. SLOPES ARE MAXIMUM.
 2. TRANSITION SIDEWALK PANEL SHALL MEET EXISTING SIDEWALK SLOPE.

NOTE:
REFER TO BASE MAPPING AND SURVEY NOTES
ON SHEET 5 REGARDING MAPPING.



RHODE ISLAND
DEPARTMENT OF TRANSPORTATION

DESIGNED BY: [Signature]

SCALE: 1"=20'

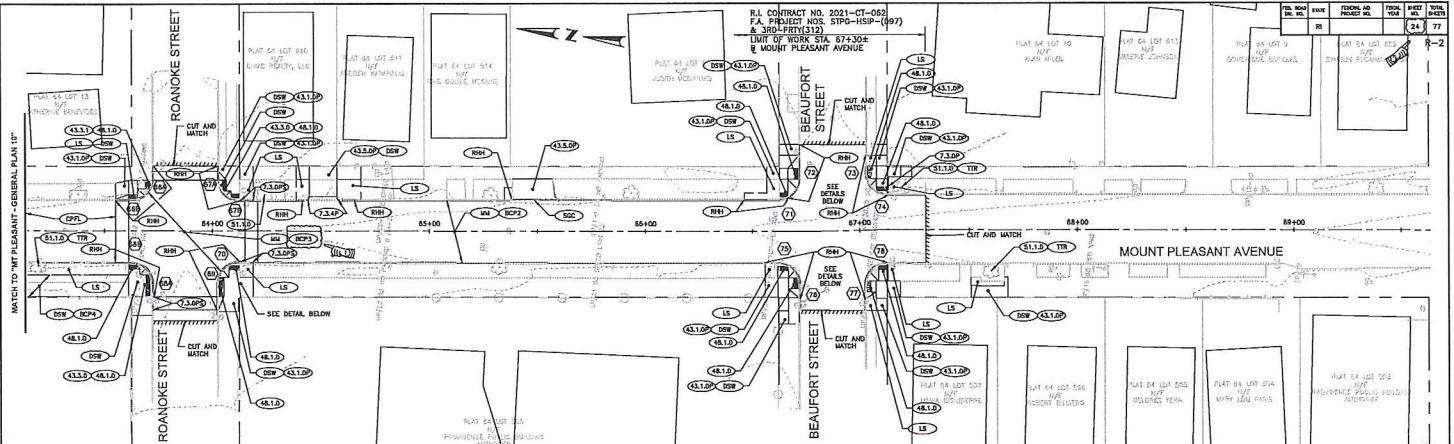
DATE: SEPTEMBER 2021

SHEET: 14 OF 77

NO.	DATE	BY	NO.	DATE	BY
1	10/2/21	SEL			
2	REVISION	SEL			

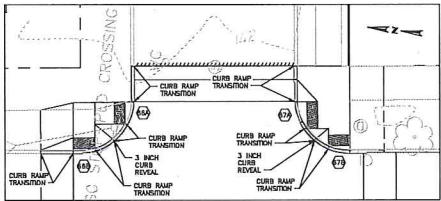
HIGHWAY SAFETY IMPROVEMENT PROGRAM
INTERSECTION SAFETY IMPROVEMENTS - STATEWIDE
PROVIDENCE & JOHNSTON
RHODE ISLAND

MOUNT PLEASANT AVE -
GENERAL PLAN 1

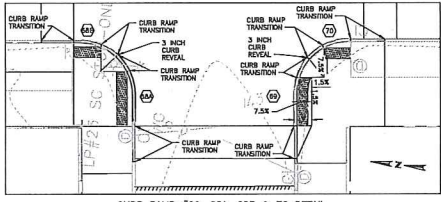


CURB RAMP NOTES:
 1. SLOPES ARE MAXIMUM.
 2. TRANSITION SIDEWALK PANEL SHALL MEET EXISTING SIDEWALK SLOPE (6.0' TYP.).

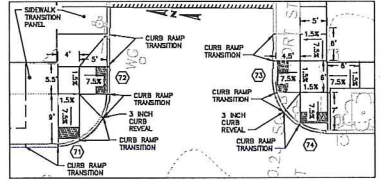
CR #	WIDTH OF SIDEWALK (W)	WIDTH OF RAMP DISTANCE A.O.P. (W _R)	TRANSITION LENGTH LT. SIDE RT. SIDE
64	4.0'	4.0'	3.0 6.0
65	6.0'	4.0'	6.0 3.0
66	6.0'	4.0'	6.0 3.0
67	6.0'	4.0'	6.0 3.0
68	10.0'	4.0'	3.0 6.0
69	10.0'	10.0'	6.5 3.0
70	N/A	4.0'	3.0 6.0
71	N/A	9.0	4.0 6.0
72	N/A	4.0'	6.0 6.0
73	N/A	5.5'	4.5 6.0
74	N/A	8.0'	5.0 3.8
75	N/A	5.0'	3.8 6.0
76	N/A	5.0'	3.8 6.0
77	N/A	5.0'	4.0 4.0
78	N/A	5.0'	4.0 3.0
79	N/A	4.0'	N/A 6.0



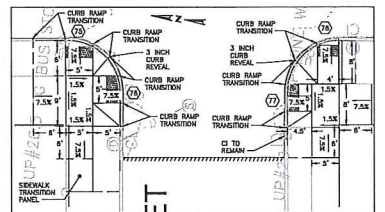
CURB RAMP #66A, 66B, 67A & 67B DETAIL
 SCALE: 1" = 8'



CURB RAMP #69, 68A, 68B & 70 DETAIL
 SCALE: 1" = 8'



CURB RAMP #71, #72, #73 & #74 DETAIL
 SCALE: 1" = 8'



CURB RAMP #75, #76, #77 & #78 DETAIL
 SCALE: 1" = 8'

ADDENDUM NO. 4

NOTE: REFER TO BASE MAPPING AND SURVEY NOTES ON SHEET 5 REGARDING MAPPING.



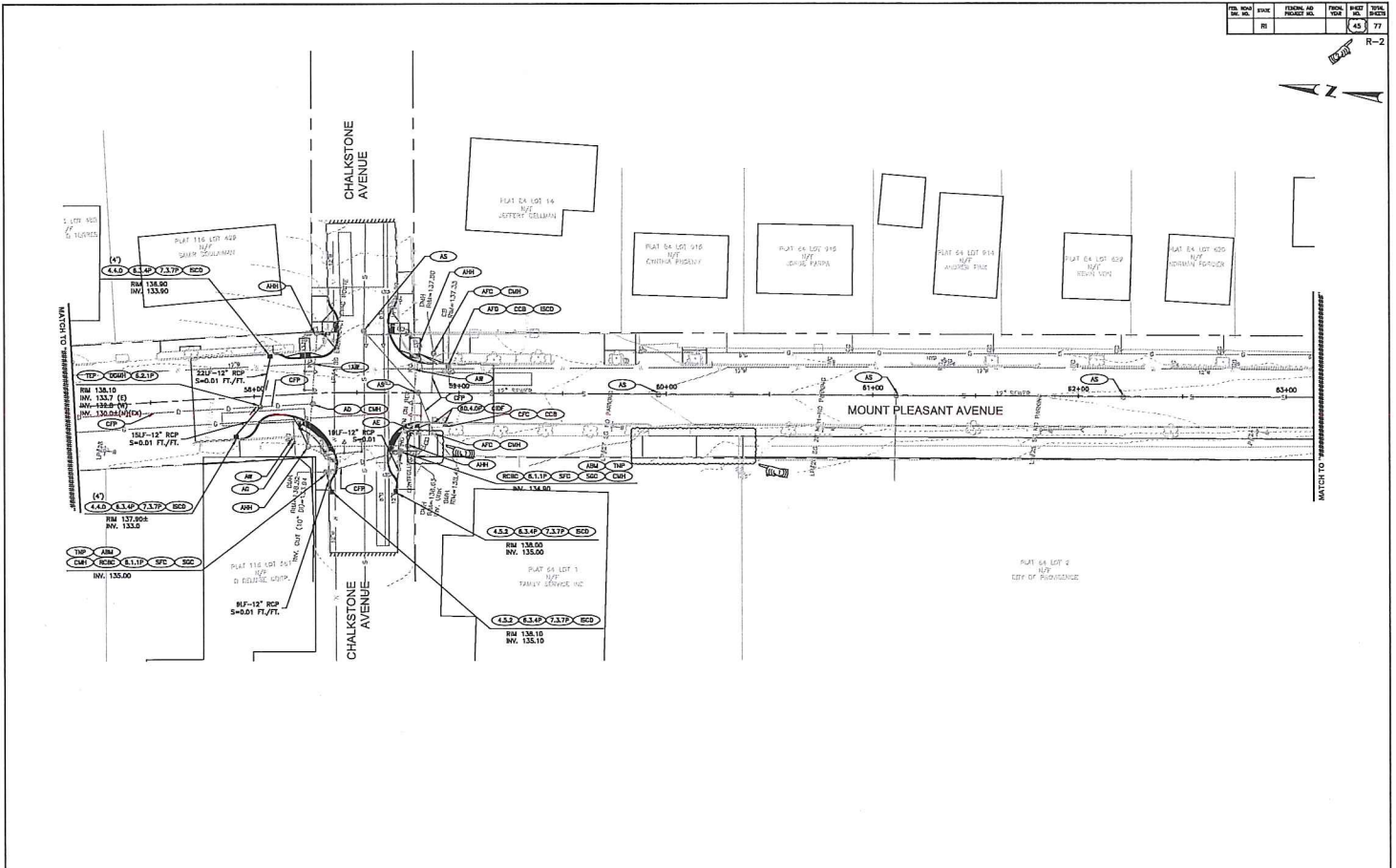
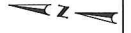
DESIGNED BY	SCALE: 1"=20'
DATE: SEPTEMBER 2021	PROJECT NO. 24
DRAWN BY	NO. 1 DATE: 11/21
CHECKED BY	NO. 2 DATE: 11/21
IN CHARGE	NO. 3 DATE: 11/21

HIGHWAY SAFETY IMPROVEMENT PROGRAM
 INTERSECTION SAFETY IMPROVEMENTS - STATEWIDE
 PROVIDENCE & JOHNSTON
 MOUNT PLEASANT AVE -
 GENERAL PLAN 11
 RHODE ISLAND

F:\FILES\2021\PROJECT PLAN\0022_V1_MPA_GENERAL_A03_004.DWG

REV.	NO.	DATE	BY	CHKD.	AS	DATE	BY	CHKD.	AS
	45								
	77								

R-2



ADDENDUM NO. 4

NOTE:
REFER TO BASE MAPPING AND SURVEY NOTES
ON SHEET 5 REGARDING MAPPING.



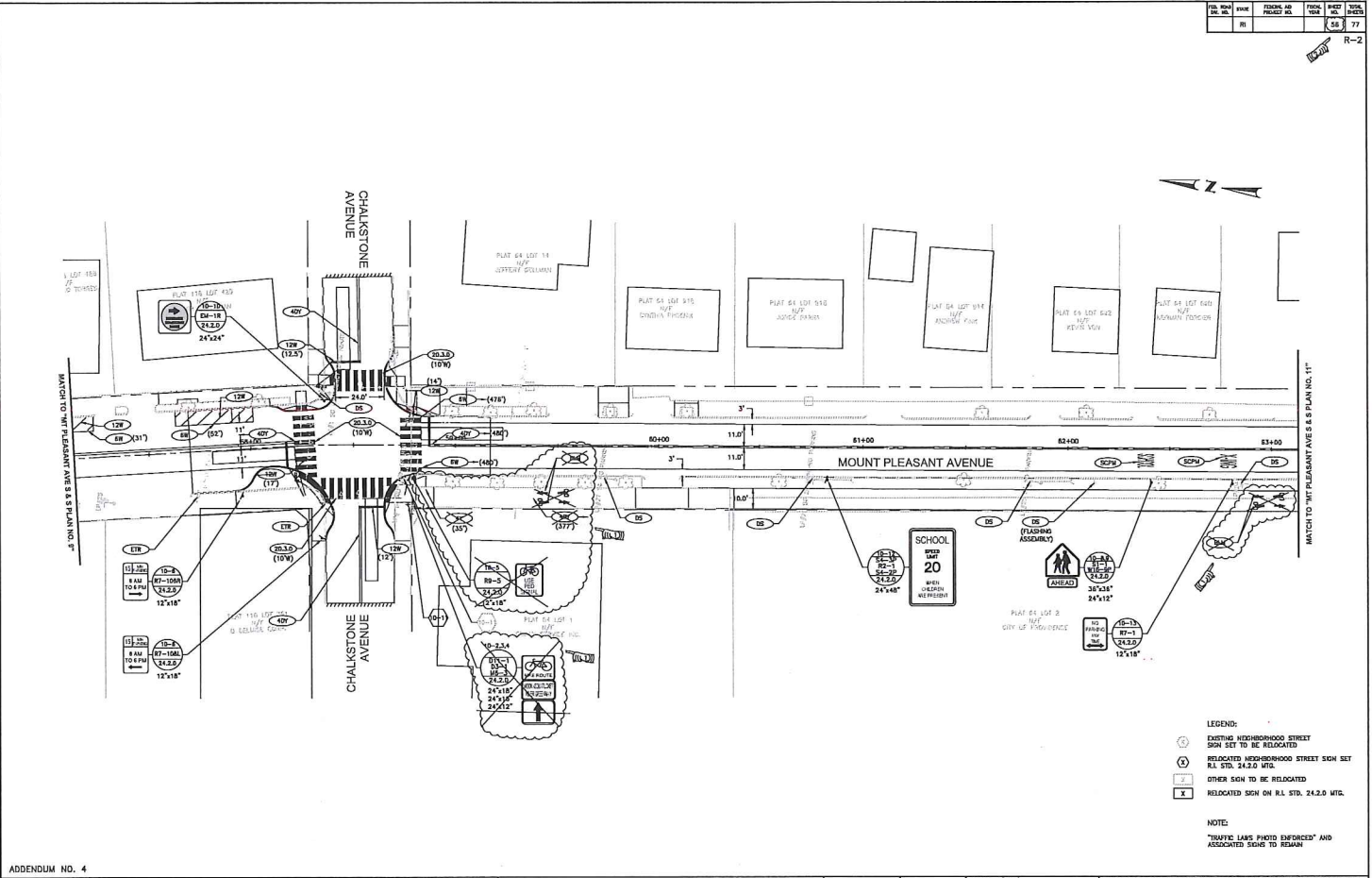
DESIGNED BY	SCALE: 1"=20'
CHECKED BY	DATE: SEPTEMBER 2021
DRAWN BY	DATE: 05/21/21
DATE: 05/21/21	DATE: 05/21/21
DATE: 05/21/21	DATE: 05/21/21

HIGHWAY SAFETY IMPROVEMENT PROGRAM
INTERSECTION SAFETY IMPROVEMENTS - STATEWIDE
PROVIDENCE & JOHNSTON
MOUNT PLEASANT AVE -
DRAINAGE & UTILITY PLAN 10

FILES\001\1917\PROJECT PLANS\0012_11_MPA_DRAINAGE_10A.DWG

NO.	DATE	REVISIONS	BY	CHECKED	DATE
1	05/18/21	ISSUE FOR PERMIT	SS	SS	05/18/21
2	05/24/21	REVISION	SS	SS	05/24/21

R-2



- LEGEND:
- ⊙ EXISTING NEIGHBORHOOD STREET SIGN SET TO BE RELOCATED
 - ⊕ RELOCATED NEIGHBORHOOD STREET SIGN SET R.L. STD. 24.2.0 UTD.
 - ⊖ OTHER SIGN TO BE RELOCATED
 - ⊗ RELOCATED SIGN ON R.L. STD. 24.2.0 UTD.

NOTE:
"TRAFFIC LAWS PHOTO ENFORCED" AND ASSOCIATED SIGNS TO REMAIN

ADDENDUM NO. 4

NOTE: REFER TO BASE MAPPING AND SURVEY NOTES ON SHEET 5 REGARDING MAPPING.



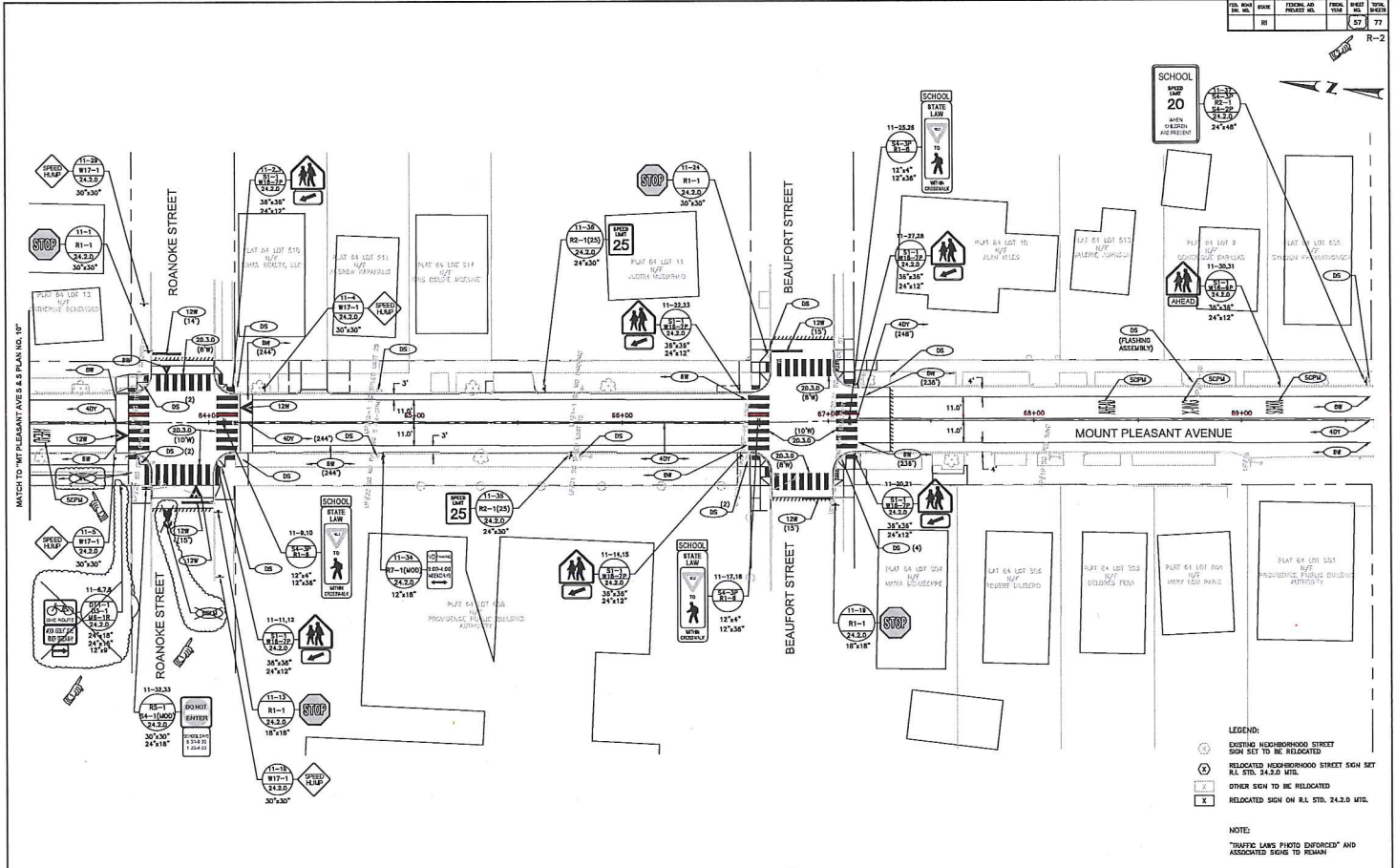
RI DOT RHODE ISLAND DEPARTMENT OF TRANSPORTATION

DESIGNED BY	SCALE: 1"=20'
DRAWN BY	DATE
CHECKED BY	DATE
DATE	DATE
BY	BY
NO.	NO.
DATE	DATE
BY	BY

HIGHWAY SAFETY IMPROVEMENT PROGRAM
INTERSECTION SAFETY IMPROVEMENTS - STATEWIDE
PROVIDENCE & JOHNSTON
MOUNT PLEASANT AVE -
SIGNING & STRIPING PLAN 10
R:\FILES\CONTRACT\PROJECT PLAN\003521\TYPING\SIGNING\JOB_004.DWG

REV.	NO.	DATE	BY	DESCRIPTION
1	1	10/20/11	RL	ISSUED FOR PERMIT
2	2	10/20/11	RL	ISSUED FOR PERMIT
3	3	10/20/11	RL	ISSUED FOR PERMIT
4	4	10/20/11	RL	ISSUED FOR PERMIT
5	5	10/20/11	RL	ISSUED FOR PERMIT
6	6	10/20/11	RL	ISSUED FOR PERMIT
7	7	10/20/11	RL	ISSUED FOR PERMIT

R-2



LEGEND:

- ⊕ EXISTING NEIGHBORHOOD STREET SIGN SET TO BE RELOCATED
- ⊗ RELOCATED NEIGHBORHOOD STREET SIGN SET R.L. STD. 24.2.0 MTD.
- ⊕ OTHER SIGN TO BE RELOCATED
- ⊗ RELOCATED SIGN ON R.L. STD. 24.2.0 MTD.

NOTE:
"TRAFFIC LAWS PHOTO ENFORCED" AND ASSOCIATED SIGNS TO REMAIN

ADDENDUM NO. 4

NOTE: REFER TO BASE MAPPING AND SURVEY NOTES ON SHEET 5 REGARDING MAPPING.



RI DOT RHODE ISLAND DEPARTMENT OF TRANSPORTATION

DESIGNED BY:	SCALE: 1"=20'
DRAWN BY:	DATE: SEPTEMBER 2011
CHECKED BY:	REVISIONS:
IN CHARGE:	NO. 1 DATE BY
	2 10/20/11 RL
	3 10/20/11 RL

HIGHWAY SAFETY IMPROVEMENT PROGRAM
INTERSECTION SAFETY IMPROVEMENTS - STATEWIDE
 PROVIDENCE & JARVIS/STON
 RHODE ISLAND
MOUNT PLEASANT AVE -
SIGNING & STRIPING PLAN 11
 FILES\G04\1767\PROJECT PLANS\01025_V1_SIGN_STRIPING_A03_004.DWG

REV.	DATE	REVISION	BY	CHKD.	SHEET NO.	TOTAL SHEETS
1					63	77

R-2

TRAFFIC SIGNAL MATERIALS LIST

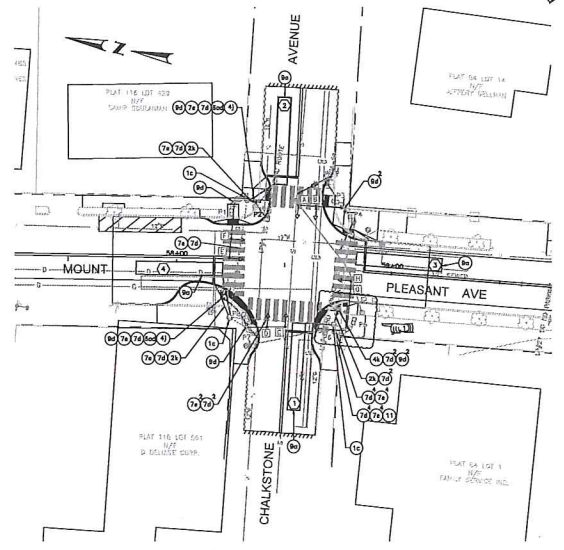
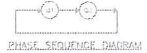
ITEM NO.	LEGEND	ITEM CODE	ITEM DESCRIPTION
1e	□HH	T04.0400	BREAK INTO EXISTING HANDBOLE
2a		T06.5330	3 INCH POLYVINYL CHLORIDE PLASTIC CONDUIT (SCHEDULE 40) - UNDER EXISTING PAVEMENT
4j	•	T11.2006	8" ALUMINUM PEDESTAL POLE AND FOUNDATION, RI STD. 19.4.0
4k	•	T11.9902	4" ALUMINUM PEDESTAL POLE AND FOUNDATION, RI STD. 19.4.0
5ad	DB-	T14.9901	1 RAY PEDESTAL MOUNTED L.E.D. PEDESTRIAN SIGNAL HEAD 12 INCH WITH COUNTDOWN TIMER
5aa	DB-	T14.9902	2 RAY PEDESTAL MOUNTED L.E.D. PEDESTRIAN SIGNAL HEAD 12 INCH WITH COUNTDOWN TIMER
7d		T04.5303	14 AWG 3 CONDUCTOR CABLE
7e		T04.5305	14 AWG 3 CONDUCTOR CABLE
8a	■	T13.1000	TRAFFIC DETECTORS - LOOP STANDARD 18.0.0
8d	▼	T13.8210	ACCESSIBLE PEDESTRIAN DETECTOR - PUSHBUTTON WITH SIGN
11		T12.9901	WOODY EXISTING TRAFFIC SIGNAL CONTROLLER/CABINET
12		945.9901	REMOVE AND SALVAGE TRAFFIC SIGNAL SYSTEM



- NOTES:**
1. ALL SIGNAL LENSES/HEADS SHALL BE 12 INCH LIGHT EMITTING DIODES (LED).
 2. PEDESTRIAN SIGNALS SHALL BE FILLED-IN LED SYMBOLS.

SEQUENCE AND TIMING CHART

SUBJECT	DESCRIPTION	PHASE	1	2	3	4	5	6	7	8	9	10	11	12	13	14	15	16	17	18	19	20	21	22	23	24	25	26	27	28	29	30	31	32	33	34	35	36	37	38	39	40	41	42	43	44	45	46	47	48	49	50
CHALKSTONE AVE	ED	AS	2	3	4	5	6	7	8	9	10	11	12	13	14	15	16	17	18	19	20	21	22	23	24	25	26	27	28	29	30	31	32	33	34	35	36	37	38	39	40	41	42	43	44	45	46	47	48	49	50	
CHALKSTONE AVE	ED	AS	2	3	4	5	6	7	8	9	10	11	12	13	14	15	16	17	18	19	20	21	22	23	24	25	26	27	28	29	30	31	32	33	34	35	36	37	38	39	40	41	42	43	44	45	46	47	48	49	50	
MT PLEASANT AVE	ED	EA	2	3	4	5	6	7	8	9	10	11	12	13	14	15	16	17	18	19	20	21	22	23	24	25	26	27	28	29	30	31	32	33	34	35	36	37	38	39	40	41	42	43	44	45	46	47	48	49	50	
MT PLEASANT AVE	ED	EA	2	3	4	5	6	7	8	9	10	11	12	13	14	15	16	17	18	19	20	21	22	23	24	25	26	27	28	29	30	31	32	33	34	35	36	37	38	39	40	41	42	43	44	45	46	47	48	49	50	



TRAFFIC SIGNAL CONSTRUCTION NOTES

1. THE ITEM "REMOVE AND SALVAGE TRAFFIC SIGNAL SYSTEM" SHALL INCLUDE THE FOLLOWING MAJOR ITEMS:
 - 2 PEDESTRIAN SIGNAL HEADS
 - 8 PEDESTRIAN PUSHBUTTONS
 - MISCELLANEOUS CABLE, WIRING, ETC.
2. THE CONTRACTOR, PRIOR TO ORDERING ANY EQUIPMENT SHALL COMPLETE A SUBSURFACE INVESTIGATION AT ALL FOUNDATION LOCATIONS TO DETERMINE IF THERE ARE ANY CONFLICTS WITH UTILITIES OR OTHER SUBSURFACE FEATURES (ROADS/ALLEYS) THAT WOULD REQUIRE RELOCATION/REVISION OF THE EQUIPMENT LAYOUT. IF SUBSURFACE CONDITIONS REQUIRE THE CONTRACTOR TO DEVIATE FROM THE PEDESTAL POLE LOCATION OR FOUNDATION CONTAINER, THE CONTRACTOR SHALL NOTIFY THE ENGINEER FOR POSSIBLE RELOCATION ALTERNATIVES. THE CONTRACTOR SHALL SUBMIT APPROPRIATE FOUNDATION DESIGN SHOP DRAWINGS IN ACCORDANCE WITH RHODE ISLAND CODE FOR REVIEW AND APPROVAL OF THE ENGINEER.
3. INDICATE LOOP VEHICLE DETECTORS SHALL BE CENTERED IN THEIR RESPECTIVE TRAVEL LANES AND MISPECIFIED IN EXISTING HANDBOLES.
4. THE EXISTING CONDUIT NETWORK SHOWN ON THIS PLAN IS BASED ON RECORD PLANS. THE CONTRACTOR SHALL FIELD VERIFY THE EXISTING CONDUIT LOCATIONS AND SIZES FOR ACCURACY AND PROFICIENCY PRIOR TO PERFORMING THE WORK.
5. THE CONTRACTOR SHALL UTILIZE EXISTING CABLEING TO THE SIGNAL CONTROLLER FOR HIS PUSHBUTTONS UNLESS A NEW WIRE IS CALLED FOR.

ADDENDUM NO. 4

NOTE: REFER TO BASE MAPPING AND SURVEY NOTES ON SHEET 5 REGARDING MAPPING.



DESIGNED BY:	SCALE: 1"=20'
CHECKED BY:	
DATE: SEPTEMBER 2011	
DRAWN BY:	
DATE: 8/30/11	
BY:	
NO.:	
BY:	
NO.:	
BY:	
NO.:	

HIGHWAY SAFETY IMPROVEMENT PROGRAM
INTERSECTION SAFETY IMPROVEMENTS - STATEWIDE
PROVIDENCE & JOHNSTON
RHODE ISLAND

SIGNAL PLAN 3

F:\PROJECTS\1987\PROJECT FILES\00232_VT_VPL_SIGNAL_ADS_004.DWG