

July 30, 2020

STATE OF RHODE ISLAND AND PROVIDENCE PLANTATION
DEPARTMENT OF ADMINISTRATION

DIVISION OF PURCHASES BID NO. 7606828

RHODE ISLAND DEPARTMENT OF TRANSPORTATION

RHODE ISLAND CONTRACT NO.2020-CT-034

FEDERAL-AID PROJECT NO. FAP Nos: STPG-8888(244)

STC Improvements 2020

Towns of Narragansett, North Kingstown, North Providence, and Westerly. Counties of Providence and Washington.

CITY/TOWN OF Narragansett, North Kingstown, North Providence, Westerly

COUNTY OF WASHINGTON, PROVIDENCE

NOTICE TO PROSPECTIVE BIDDERS

ADDENDUM NO. 1 Prospective bidders and all concerned are hereby notified of the following changes in the Plans, Specifications, Proposal and Distribution of Quantities for this contract. These changes shall be incorporated in the Plans, Specifications, Proposal and Distribution of Quantities, and shall become an integral part of the Contract Documents.

A. Contract Documents

1. Federal Wage Rates

Delete the Federal Wage Rates pages provided on the Advertising Disk in their entirety and replace them with the Federal Wage Rates (R-1) pages attached to this Addendum No. 1. The federal wage rates have been updated.

B. Distribution of Quantities

1. Table of Contents – Distribution of Quantities

Delete Pages Index 1 through Index 3 in their entirety and replace them with pages Index 1 (R-1) through Index 3 (R-1) attached to this Addendum No. 1.

2. Item Code 201.0402 and Item Code 201.0409

Delete Pages 1 and 2 in their entirety and replace them with Pages 1 (R-1), 1a, and 2 (R-1) attached to this Addendum No. 1. Quantities have been revised.

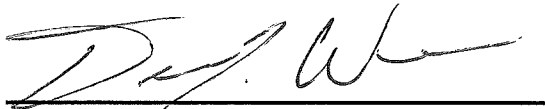
3. Item Code 202.0100, Item Code 202.9902, Item Code 202.9903, Item Code 202.9904, Item Code 202.9905, Item Code 204.0100, Item Code 206.0301, Item Code 302.0100, Item Code 601.0200, Item Code 702.0531, and Item Code 702.9901

Delete Pages 4, 5, 6, 7, 8, and 9 in their entirety and replace them with Pages 4 (R-1), 4a, 5 (R-1), 6 (R-1), 7 (R-1), 8 (R-1), 8a, 9 (R-1), and 9a attached to this Addendum No. 1. Quantities have been revised.

4. Item Code 906.0210 and Item Code 906.0211
Delete Pages 13, 14, and 15 in their entirety and replace them with Pages 13 (R-1), 14 (R-1), 14a, and 15 (R-1) attached to this Addendum No. 1. Quantities have been revised.
5. Item Code 932.0200
Delete Page 20 in its entirety and replace it with Page 20 (R-1) and 20a attached to this Addendum No. 1. Quantity has been revised.
6. Item Code L01.0102 and Item Code L02.0102
Delete Pages 22 and 23 in their entirety and replace them with Pages 22 (R-1), 22a, 23 (R-1), and 23a attached to this Addendum No. 1. Quantities have been revised.
7. Item Code 410.1000
Delete Page 35 in its entirety and replace it with Page 35 (R-1) attached to this Addendum No. 1. Item has been added.

C. Drawings/Plans - Change/Addition

1. Typical Details
Delete Sheet 6 in its entirety and replace it with Sheet 6 (R-1) attached to this Addendum No. 1. The sheet has been revised.
2. General Plan No. 1B
Delete Sheet 12 in its entirety and replace it with Sheet 12 (R-1) attached to this Addendum No. 1. The sheet has been revised.
3. Location Plan No. 1B
Delete Sheet 13 in its entirety and replace it with Sheet 13 (R-1) attached to this Addendum No. 1. The sheet has been revised.
4. Signing & Striping Plan No. 1B
Delete Sheet 14 in its entirety and replace it with Sheet 14 (R-1) attached to this Addendum No. 1. The sheet has been revised.
5. Traffic Signal Plan No. 1B
Delete Sheet 15 in its entirety and replace it with Sheet 15 (R-1) attached to this Addendum No. 1. The sheet has been revised.
6. General Plan No. 4
Delete Sheet 19 in its entirety and replace it with Sheet 19 (R-1) attached to this Addendum No. 1. The sheet has been revised.
7. General Plan No. 5
Delete Sheet 21 in its entirety and replace it with Sheet 21 (R-1) attached to this Addendum No. 1. The sheet has been revised.



RI Department of Transportation
Manager, Division of Project Management

"General Decision Number: RI20200001 07/24/2020

Superseded General Decision Number: RI20190001

State: Rhode Island

Construction Types: Building, Heavy (Heavy and Marine) and Highway

Counties: Rhode Island Statewide.

BUILDING CONSTRUCTION PROJECTS (does not include residential construction consisting of single family homes and apartments up to and including 4 stories) HEAVY, HIGHWAY AND MARINE CONSTRUCTION PROJECTS

Note: Under Executive Order (EO) 13658, an hourly minimum wage of \$10.80 for calendar year 2020 applies to all contracts subject to the Davis-Bacon Act for which the contract is awarded (and any solicitation was issued) on or after January 1, 2015. If this contract is covered by the EO, the contractor must pay all workers in any classification listed on this wage determination at least \$10.80 per hour (or the applicable wage rate listed on this wage determination, if it is higher) for all hours spent performing on the contract in calendar year 2020. If this contract is covered by the EO and a classification considered necessary for performance of work on the contract does not appear on this wage determination, the contractor must pay workers in that classification at least the wage rate determined through the conformance process set forth in 29 CFR 5.5(a)(1)(ii) (or the EO minimum wage rate, if it is higher than the conformed wage rate). The EO minimum wage rate will be adjusted annually. Please note that this EO applies to the above-mentioned types of contracts entered into by the federal government that are subject to the Davis-Bacon Act itself, but it does not apply to contracts subject only to the Davis-Bacon Related Acts, including those set forth at 29 CFR 5.1(a)(2)-(60). Additional information on contractor requirements and worker protections under the EO is available at www.dol.gov/whd/govcontracts.

Modification Number	Publication Date
0	01/03/2020

1	01/24/2020
2	02/21/2020
3	03/06/2020
4	03/13/2020
5	05/01/2020
6	05/22/2020
7	06/05/2020
8	06/19/2020
9	07/24/2020

ASBE0006-006 12/01/2019

	Rates	Fringes
HAZARDOUS MATERIAL HANDLER (Includes preparation, wetting, stripping, removal scrapping, vacuuming, bagging & disposing of all insulation materials, whether they contain asbestos or not, from mechanical systems).....	\$ 36.60	22.40

ASBE0006-008 09/01/2019

	Rates	Fringes
Asbestos Worker/Insulator Includes application of all insulating materials, protective coverings, coatings & finishes to all types of mechanical systems..	\$ 43.60	29.90

BOIL0029-001 01/01/2017

	Rates	Fringes
BOILERMAKER.....	\$ 42.42	24.92

BRRI0003-001 06/01/2020

	Rates	Fringes
Bricklayer, Stonemason,		

Pointer, Caulker & Cleaner.....\$ 42.55 28.02

BRRIO003-002 03/01/2020

	Rates	Fringes
Marble Setter, Terrazzo Worker & Tile Setter.....	\$ 40.78	28.92

BRRIO003-003 03/01/2020

	Rates	Fringes
Marble, Tile & Terrazzo Finisher.....	\$ 34.10	27.88

* CARP0330-001 06/05/2020

	Rates	Fringes
CARPENTER (Includes Soft Floor Layer).....	\$ 39.13	28.60
Diver Tender.....	\$ 40.13	28.60
DIVER.....	\$ 50.73	28.60
Piledriver.....	\$ 39.13	28.60
WELDER.....	\$ 40.13	28.60

FOOTNOTES:

When not diving or tending the diver, the diver and diver tender shall receive the piledriver rate. Diver tenders shall receive \$1.00 per hour above the pile driver rate when tending the diver.

Work on free-standing stacks, concrete silos & public utility electrical power houses, which are over 35 ft. in height when constructed: \$.50 per hour additional.

Work on exterior concrete shear wall gang forms, 45 ft. or more above ground elevation or on setback: \$.50 per hour additional.

The designated piledriver, known as the ""monkey"": \$1.00 per hour additional.

CARP1121-002 01/06/2020

	Rates	Fringes
MILLWRIGHT.....	\$ 39.07	29.15

ELEC0099-002 06/01/2020

	Rates	Fringes
ELECTRICIAN.....	\$ 41.61	57.24%
Teledata System Installer.....	\$ 31.21	13.10%+14.93

FOOTNOTES:

Work of a hazardous nature, or where the work height is 30 ft. or more from the floor, except when working OSHA-approved lifts: 20% per hour additional.

Work in tunnels below ground level in combined sewer outfall: 20% per hour additional.

ELEV0039-001 01/01/2020

	Rates	Fringes
ELEVATOR MECHANIC.....	\$ 53.25	34.765+a+b

FOOTNOTES:

A. PAID HOLIDAYS: New Years Day; Memorial Day; Independence Day; Labor Day; Veterans' Day; Thanksgiving Day; the Friday after Thanksgiving Day; and Christmas Day.

B. Employer contributes 8% basic hourly rate for 5 years or more of service of 6% basic hourly rate for 6 months to 5 years of service as vacation pay credit.

ENGI0057-001 06/01/2020

	Rates	Fringes
--	-------	---------

Operating Engineer: (power plants, sewer treatment plants, pumping stations, tunnels, caissons, piers, docks, bridges, wind turbines, subterranean & other marine and heavy construction work)

GROUP 1.....	\$ 42.55	26.95+a
GROUP 2.....	\$ 40.55	26.95+a
GROUP 3.....	\$ 36.17	26.95+a
GROUP 4.....	\$ 33.32	26.95+a
GROUP 5.....	\$ 39.60	26.95+a
GROUP 6.....	\$ 30.40	26.95+a
GROUP 7.....	\$ 24.40	26.95+a
GROUP 8.....	\$ 36.25	26.95+a
GROUP 9.....	\$ 40.17	26.95+a

a. BOOM LENGTHS, INCLUDING JIBS:

- 150 feet and over + \$ 2.00
- 180 feet and over + \$ 3.00
- 210 feet and over + \$ 4.00
- 240 feet and over + \$ 5.00
- 270 feet and over + \$ 7.00
- 300 feet and over + \$ 8.00
- 350 feet and over + \$ 9.00
- 400 feet and over + \$10.00

a. PAID HOLIDAYS:

New Year's Day, President's Day, Memorial Day, July Fourth, Victory Day, Labor Day, Columbus Day, Veterans Day, Thanksgiving Day, Christmas Day. a: Any employee who works 3 days in the week in which a holiday falls shall be paid for the holiday.

a. FOOTNOTES:

Hazmat work: \$2.00 per hour additional.
Tunnel/Shaft work: \$5.00 per hour additional.

POWER EQUIPMENT OPERATORS CLASSIFICATIONS

GROUP 1: Cranes, lighters, boom trucks and derricks

GROUP 2: Digging machine, Ross Carrier, locomotive, hoist, elevator, bidwell-type machine, shot & water blasting machine, paver, spreader, graders, front end loader (3 yds. and over), vibratory hammer & vacuum truck, roadheaders, forklifts, economobile type equipment, tunnel boring machines, concrete pump and on site concrete plants.

GROUP 3: Oilers on cranes.

GROUP 4: Oiler on crawler backhoe.

GROUP 5: Bulldozer, bobcats, skid steer loader, tractor, scraper, combination loader backhoe, roller, front end loader (less than 3 yds.), street and mobile-powered sweeper (3-yd. capacity), 8-ft. sweeper minimum 65 HP).

GROUP 6: Well-point installation crew.

GROUP 7: Utility Engineers and Signal Persons

GROUP 8: Heater, concrete mixer, stone crusher, welding machine, generator and light plant, gas and electric driven pump and air compressor.

GROUP 9: Boat & tug operator.

 ENGI0057-002 05/01/2020

	Rates	Fringes
Power Equipment Operator (highway construction projects; water and sewerline projects which are incidental to highway construction projects; and bridge projects that do not span water)		
GROUP 1.....	\$ 35.70	26.95+a
GROUP 2.....	\$ 30.40	26.95+a
GROUP 3.....	\$ 24.40	26.95+a
GROUP 4.....	\$ 30.98	26.95+a
GROUP 5.....	\$ 34.68	26.95+a
GROUP 6.....	\$ 34.30	26.95+a
GROUP 7.....	\$ 29.95	26.95+a

GROUP 8.....	\$ 31.33	26.95+a
GROUP 9.....	\$ 33.28	26.95+a

a. FOOTNOTE: a. Any employee who works three days in the week in which a holiday falls shall be paid for the holiday.

a. PAID HOLIDAYS: New Year's Day, President's Day, Memorial Day, July Fourth, Victory Day, Labor Day, Columbus Day, Veterans Day, Thanksgiving Day & Christmas Day.

POWER EQUIPMENT OPERATOR CLASSIFICATIONS

GROUP 1: Digging machine, crane, piledriver, lighter, locomotive, derrick, hoist, boom truck, John Henry's, directional drilling machine, cold planer, reclaimer, paver, spreader, grader, front end loader (3 yds. and over), vacuum truck, test boring machine operator, veemere saw, water blaster, hydro-demolition robot, forklift, economobile, Ross Carrier, concrete pump operator and boats

GROUP 2: Well point installation crew

GROUP 3: Utlity engineers and signal persons

GROUP 4: Oiler on cranes

GROUP 5: Combination loader backhoe, front end loader (less than 3 yds.), forklift, bulldozers & scrapers and boats

GROUP 6: Roller, skid steer loaders, street sweeper

GROUP 7: Gas and electric drive heater, concrete mixer, light plant, welding machine, pump & compressor

GROUP 8: Stone crusher

GROUP 9: Mechanic & welder

 ENGI0057-003 06/01/2020

BUILDING CONSTRUCTION

Rates Fringes

Power Equipment Operator

GROUP 1.....	\$ 41.82	26.95+a
GROUP 2.....	\$ 39.82	26.95+a
GROUP 3.....	\$ 39.60	26.95+a
GROUP 4.....	\$ 35.60	26.95+a
GROUP 5.....	\$ 32.75	26.95+a
GROUP 6.....	\$ 38.90	26.95+a
GROUP 7.....	\$ 38.47	26.95+a
GROUP 8.....	\$ 35.79	26.95+a

a. BOOM LENGTHS, INCLUDING JIBS:

- 150 ft. and over: + \$ 2.00
- 180 ft. and over: + \$ 3.00
- 210 ft. and over: + \$ 4.00
- 240 ft. and over: + \$ 5.00
- 270 ft. and over: + \$ 7.00
- 300 ft. and over: + \$ 8.00
- 350 ft. and over: + \$ 9.00
- 400 ft. and over: + \$10.00

a. PAID HOLIDAYS: New Year's Day, President's Day, Memorial Day, July Fourth, Victory Day, Labor Day, Columbus Day, Veterans Day, Thanksgiving Day & Christmas Day. a: Any employee who works 3 days in the week in which a holiday falls shall be paid for the holiday.

- a. FOOTNOTE: Hazmat work: \$2.00 per hour additional.
Tunnel/Shaft work: \$5.00 per hour additional.

POWER EQUIPMENT OPERATORS CLASSIFICATIONS

GROUP 1: Cranes, lighters, boom trucks and derricks.

GROUP 2: Digging machine, Ross carrier, locomotive, hoist, elevator, bidwell-type machine, shot & water blasting machine, paver, spreader, front end loader (3 yds. and over), vibratory hammer and vacuum truck

GROUP 3: Telehandler equipment, forklift, concrete pump & on-site concrete plant

GROUP 4: Fireman & oiler on cranes

GROUP 5: Oiler on crawler backhoe

GROUP 6: Bulldozer, skid steer loaders, bobcats, tractor, grader, scraper, combination loader backhoe, roller, front end loader (less than 3 yds.), street and mobile powered sweeper (3 yds. capacity), 8-ft. sweeper (minimum 65 hp)

GROUP 7: Well point installation crew

GROUP 8: Heater, concrete mixer, stone crusher, welding machine, generator for light plant, gas and electric driven pump & air compressor

IRON0037-001 09/16/2019

	Rates	Fringes
IRONWORKER.....	\$ 36.27	28.98

LABO0271-001 06/02/2019

BUILDING CONSTRUCTION

	Rates	Fringes
LABORER		
GROUP 1.....	\$ 31.80	25.05
GROUP 2.....	\$ 32.05	25.05
GROUP 3.....	\$ 32.55	25.05
GROUP 4.....	\$ 32.80	25.05
GROUP 5.....	\$ 33.80	25.05

LABORERS CLASSIFICATIONS

GROUP 1: Laborer, Carpenter Tender, Mason Tender, Cement Finisher Tender, Scaffold Erector, Wrecking Laborer, Asbestos Removal [Non-Mechanical Systems]

GROUP 2: Asphalt Raker, Adzemen, Pipe Trench Bracer, Demolition Burner, Chain Saw Operator, Fence & Guard Rail Erector, Setter of Metal Forms for Roadways, Mortar Mixer, Pipelayer, Riprap & Dry Stonewall Builder, Highway Stone Spreader, Pneumatic Tool Operator, Wagon Drill Operator, Tree Trimmer, Barco-Type Jumping Tamper, Mechanical Grinder

Operator

GROUP 3: Pre-Cast Floor & Roof Plank Erectors

GROUP 4: Air Track Operator, Hydraulic & Similar Self-Powered Drill, Block Paver, Rammer, Curb Setter, Powderman & Blaster

GROUP 5: Toxic Waste Remover

LABO0271-002 06/02/2019

HEAVY AND HIGHWAY CONSTRUCTION

	Rates	Fringes
LABORER		
COMPRESSED AIR		
Group 1.....	\$ 49.23	23.50
Group 2.....	\$ 38.75	23.50
Group 3.....	\$ 51.23	23.50
FREE AIR		
Group 1.....	\$ 41.30	23.50
Group 2.....	\$ 38.75	23.50
Group 3.....	\$ 43.30	23.50
LABORER		
Group 1.....	\$ 31.80	23.05
Group 2.....	\$ 32.05	23.05
Group 3.....	\$ 32.80	23.05
Group 4.....	\$ 25.30	23.05
Group 5.....	\$ 33.80	23.05
OPEN AIR CAISSON, UNDERPINNING WORK AND BORING CREW		
Bottom Man.....	\$ 37.80	23.05
Top Man & Laborer.....	\$ 36.85	23.05
TEST BORING		
Driller.....	\$ 38.25	23.05
Laborer.....	\$ 36.85	23.05

LABORER CLASSIFICATIONS

GROUP 1: Laborer; Carpenter tender; Cement finisher tender; Wrecking laborer; Asbestos removers [non-mechanical systems]; Plant laborer; Driller in quarries

GROUP 2: Adzeperson; Asphalt raker; Barcotype jumping tamper; Chain saw operators; Concrete and power buggy operator; Concrete saw operator; Demolition burner; Fence and guard rail erector; Highway stone spreader; Laser beam operator; Mechanical grinder operator; Mason tender; Mortar mixer; Pneumatic tool operator; Riprap and dry stonewall builder; Scaffold erector; Setter of metal forms for roadways; Wagon drill operator; Wood chipper operator; Pipelayer; Pipe trench bracer

GROUP 3: Air track drill operator; Hydraulic and similar powered drills; Brick paver; Block paver; Rammer and curb setter; Powderperson and blaster

GROUP 4: Flagger & signaler

GROUP 5: Toxic waste remover

LABORER - COMPRESSED AIR CLASSIFICATIONS

GROUP 1: Mucking machine operator, tunnel laborer, brake person, track person, miner, grout person, lock tender, gauge tender, miner: motor person & all others in compressed air

GROUP 2: Change house attendant, powder watchperson, top person on iron

GROUP 3: Hazardous waste work within the ""HOT"" zone

LABORER - FREE AIR CLASSIFICATIONS

GROUP 1: Grout person - pumps, brake person, track person, form mover & stripper (wood & steel), shaft laborer, laborer topside, outside motorperson, miner, conveyor operator, miner welder, heading motorperson, erecting operator, mucking machine operator, nozzle person, rodperson, safety miner, shaft & tunnel, steel & rodperson, mole nipper, concrete worker, form erector (wood, steel and all accessories), cement finisher (this type of work only), top signal person, bottom person (when heading is 50' from shaft), burner, shield operator and TBM operator

GROUP 2: Change house attendant, powder watchperson

GROUP 3: Hazardous waste work within the ""HOT"" zone

PAIN0011-005 06/01/2020

	Rates	Fringes
PAINTER		
Brush and Roller.....	\$ 35.62	22.55
Epoxy, Tanks, Towers, Swing Stage & Structural Steel.....	\$ 37.62	22.55
Spray, Sand & Water Blasting.....	\$ 38.62	22.55
Taper.....	\$ 36.37	22.55
Wall Coverer.....	\$ 36.12	22.55

PAIN0011-006 06/01/2020

	Rates	Fringes
GLAZIER.....	\$ 39.18	22.55

FOOTNOTES:

SWING STAGE: \$1.00 per hour additional.

PAID HOLIDAYS: Labor Day & Christmas Day.

PAIN0011-011 06/01/2020

	Rates	Fringes
Painter (Bridge Work).....	\$ 52.25	22.55

PAIN0035-008 06/01/2011

	Rates	Fringes
Sign Painter.....	\$ 24.79	13.72

PLAS0040-001 06/03/2019

BUILDING CONSTRUCTION

	Rates	Fringes
CEMENT MASON/CONCRETE FINISHER...	\$ 36.00	27.15

FOOTNOTE: Cement Mason: Work on free swinging scaffolds under 3 planks width and which is 20 or more feet above ground and any offset structure: \$.30 per hour additional.

 PLAS0040-002 07/01/2019

HEAVY AND HIGHWAY CONSTRUCTION

	Rates	Fringes
CEMENT MASON/CONCRETE FINISHER...	\$ 32.85	22.20

 PLAS0040-003 07/01/2019

	Rates	Fringes
PLASTERER.....	\$ 37.55	27.50

 PLUM0051-002 03/02/2020

	Rates	Fringes
Plumbers and Pipefitters.....	\$ 43.69	30.05

 ROOF0033-004 06/01/2020

	Rates	Fringes
ROOFER.....	\$ 39.15	27.31

 SFRI0669-001 01/02/2020

	Rates	Fringes
SPRINKLER FITTER.....	\$ 45.67	24.74

 SHEE0017-002 12/01/2019

	Rates	Fringes
Sheet Metal Worker.....	\$ 37.13	36.38

TEAM0251-001 05/01/2019

HEAVY AND HIGHWAY CONSTRUCTION

	Rates	Fringes
TRUCK DRIVER		
GROUP 1.....	\$ 27.96	26.8525+A+B+C
GROUP 2.....	\$ 27.61	26.8525+A+B+C
GROUP 3.....	\$ 27.66	26.8525+A+B+C
GROUP 4.....	\$ 27.71	26.8525+A+B+C
GROUP 5.....	\$ 27.81	26.8525+A+B+C
GROUP 6.....	\$ 28.21	26.8525+A+B+C
GROUP 7.....	\$ 28.41	26.8525+A+B+C
GROUP 8.....	\$ 27.91	26.8525+A+B+C
GROUP 9.....	\$ 28.16	26.8525+A+B+C
GROUP 10.....	\$ 27.96	26.8525+A+B+C

FOOTNOTES:

A. Paid Holidays: New Year's Day, Memorial Day, Independence Day, Labor Day, Thanksgiving Day and Christmas Day, plus Presidents' Day, Columbus Day, Veteran's Day & V-J Day, providing the employee has worked at least one day in the calendar week in which the holiday falls.

B. Employee who has been on the payroll for 1 year or more but less than 5 years and has worked 150 Days during the last year of employment shall receive 1 week's paid vacation; 5 to 10 years - 2 weeks' paid vacation; 10 or more years - 3 week's paid vacation.

C. Employees on the seniority list shall be paid a one hundred dollar (\$100.00) bonus for every four hundred (400) hours worked, up to a maximum of five hundred dollars (\$500.00)

All drivers working on a defined hazard material job site shall be paid a premium of \$2.00 per hour over applicable rate.

TRUCK DRIVER CLASSIFICATIONS

GROUP 1: Pick-up trucks, station wagons, & panel trucks

GROUP 2: Two-axle on low beds

GROUP 3: Two-axle dump truck

GROUP 4: Three-axle dump truck

GROUP 5: Four- and five-axle equipment

GROUP 6: Low-bed or boom trailer.

GROUP 7: Trailers when used on a double hook up (pulling 2 trailers)

GROUP 8: Special earth-moving equipment, under 35 tons

GROUP 9: Special earth-moving equipment, 35 tons or over

GROUP 10: Tractor trailer

WELDERS - Receive rate prescribed for craft performing operation to which welding is incidental.

=====
Note: Executive Order (EO) 13706, Establishing Paid Sick Leave for Federal Contractors applies to all contracts subject to the Davis-Bacon Act for which the contract is awarded (and any solicitation was issued) on or after January 1, 2017. If this contract is covered by the EO, the contractor must provide employees with 1 hour of paid sick leave for every 30 hours they work, up to 56 hours of paid sick leave each year. Employees must be permitted to use paid sick leave for their own illness, injury or other health-related needs, including preventive care; to assist a family member (or person who is like family to the employee) who is ill, injured, or has other health-related needs, including preventive care; or for reasons resulting from, or to assist a family member (or person who is like family to the employee) who is a victim of, domestic

violence, sexual assault, or stalking. Additional information on contractor requirements and worker protections under the EO is available at www.dol.gov/whd/govcontracts.

Unlisted classifications needed for work not included within the scope of the classifications listed may be added after award only as provided in the labor standards contract clauses (29CFR 5.5 (a) (1) (ii)).

The body of each wage determination lists the classification and wage rates that have been found to be prevailing for the cited type(s) of construction in the area covered by the wage determination. The classifications are listed in alphabetical order of ""identifiers"" that indicate whether the particular rate is a union rate (current union negotiated rate for local), a survey rate (weighted average rate) or a union average rate (weighted union average rate).

Union Rate Identifiers

A four letter classification abbreviation identifier enclosed in dotted lines beginning with characters other than ""SU"" or ""UAVG"" denotes that the union classification and rate were prevailing for that classification in the survey. Example: PLUM0198-005 07/01/2014. PLUM is an abbreviation identifier of the union which prevailed in the survey for this classification, which in this example would be Plumbers. 0198 indicates the local union number or district council number where applicable, i.e., Plumbers Local 0198. The next number, 005 in the example, is an internal number used in processing the wage determination. 07/01/2014 is the effective date of the most current negotiated rate, which in this example is July 1, 2014.

Union prevailing wage rates are updated to reflect all rate changes in the collective bargaining agreement (CBA) governing this classification and rate.

Survey Rate Identifiers

Classifications listed under the ""SU"" identifier indicate that no one rate prevailed for this classification in the survey and the published rate is derived by computing a weighted average

rate based on all the rates reported in the survey for that classification. As this weighted average rate includes all rates reported in the survey, it may include both union and non-union rates. Example: SULA2012-007 5/13/2014. SU indicates the rates are survey rates based on a weighted average calculation of rates and are not majority rates. LA indicates the State of Louisiana. 2012 is the year of survey on which these classifications and rates are based. The next number, 007 in the example, is an internal number used in producing the wage determination. 5/13/2014 indicates the survey completion date for the classifications and rates under that identifier.

Survey wage rates are not updated and remain in effect until a new survey is conducted.

Union Average Rate Identifiers

Classification(s) listed under the UAVG identifier indicate that no single majority rate prevailed for those classifications; however, 100% of the data reported for the classifications was union data. EXAMPLE: UAVG-OH-0010 08/29/2014. UAVG indicates that the rate is a weighted union average rate. OH indicates the state. The next number, 0010 in the example, is an internal number used in producing the wage determination. 08/29/2014 indicates the survey completion date for the classifications and rates under that identifier.

A UAVG rate will be updated once a year, usually in January of each year, to reflect a weighted average of the current negotiated/CBA rate of the union locals from which the rate is based.

WAGE DETERMINATION APPEALS PROCESS

1.) Has there been an initial decision in the matter? This can be:

- * an existing published wage determination
- * a survey underlying a wage determination
- * a Wage and Hour Division letter setting forth a position on a wage determination matter
- * a conformance (additional classification and rate) ruling

On survey related matters, initial contact, including requests for summaries of surveys, should be with the Wage and Hour Regional Office for the area in which the survey was conducted because those Regional Offices have responsibility for the Davis-Bacon survey program. If the response from this initial contact is not satisfactory, then the process described in 2.) and 3.) should be followed.

With regard to any other matter not yet ripe for the formal process described here, initial contact should be with the Branch of Construction Wage Determinations. Write to:

Branch of Construction Wage Determinations
Wage and Hour Division
U.S. Department of Labor
200 Constitution Avenue, N.W.
Washington, DC 20210

2.) If the answer to the question in 1.) is yes, then an interested party (those affected by the action) can request review and reconsideration from the Wage and Hour Administrator (See 29 CFR Part 1.8 and 29 CFR Part 7). Write to:

Wage and Hour Administrator
U.S. Department of Labor
200 Constitution Avenue, N.W.
Washington, DC 20210

The request should be accompanied by a full statement of the interested party's position and by any information (wage payment data, project description, area practice material, etc.) that the requestor considers relevant to the issue.

3.) If the decision of the Administrator is not favorable, an interested party may appeal directly to the Administrative Review Board (formerly the Wage Appeals Board). Write to:

Administrative Review Board
U.S. Department of Labor
200 Constitution Avenue, N.W.
Washington, DC 20210

4.) All decisions by the Administrative Review Board are final.

=====

END OF GENERAL DECISION"

Table of Contents - Distribution of Quantities

Project Name - STC Improvements 2020

Estimate Name - Addendum No. 1

R.I. Contract No. - 2020-CT-034

FAP Nos: STPG-8888(244)

ItemCode	Description	Page
201.0402	REMOVE AND DISPOSE CONCRETE CURB	1
201.0403	REMOVE AND DISPOSE SIDEWALKS	1
201.0409	REMOVE AND DISPOSE FLEXIBLE PAVEMENT	1
201.0428	REMOVE AND DISPOSE FRAME AND GRATE OR FRAME AND COVER	2
201.0610	REMOVE AND DISPOSE DIRECTIONAL, WARNING, REGULATORY, SERVICE, AND STREET SIGNS	2
201.9901	REMOVE AND DISPOSE WOOD CURB	3
201.9902	REMOVE AND DISPOSE COBBLE STONE EDGING	3
201.9903	REMOVE, STOCKPILE AND RESET BOULDER EDGING	3
201.9904	REMOVE, STOCKPILE AND RESET CRUSHED STONE	3
201.9905	REMOVE, STOCKPILE AND RESET CONCRETE EDGING	3
201.9906	REMOVE, STOCKPILE AND RESET WOOD WALL	4
202.0100	EARTH EXCAVATION	4
202.0700	COMMON BORROW	5
202.9901	HANDLING, HAULING, STOCKPILING, AND MANAGEMENT OF CONTAMINATED SOILS	5
202.9902	LOAD AND HAUL CONTAMINATED SOIL, TYPE 1	5
202.9903	DISPOSAL OF CONTAMINATED SOIL, TYPE 1	5
202.9904	LOAD AND HAUL CONTAMINATED SOIL, TYPE 2	5
202.9905	DISPOSAL OF CONTAMINATED SOIL, TYPE 2	6
202.9906	LOAD, HAUL, AND DISPOSAL OF OTHER WASTE	6
203.9901	DEWATERING	6
204.0100	TRIMMING AND FINE GRADING	6
206.0301	COMPOST FILTER SOCK	6
209.9901	INLET PROTECTION	7
212.2100	MAINTENANCE AND CLEANING OF EROSION AND POLLUTION CONTROLS	7
302.0100	GRAVEL BORROW SUBBASE COURSE	7
401.2100	MODIFIED CLASS 12.5 HMA	8
403.0300	ASPHALT EMULSION TACK COAT	8
601.0200	CLASS XX PORTLAND CEMENT CONCRETE	8
702.0511	FRAME AND COVER STANDARD 6.1.0	9
702.0517	FRAME AND GRATE, STANDARD 6.3.2	9
702.0531	PRECAST CONCRETE INLET STONE 38'' STANDARD 7.1.6	9
702.0532	PRECAST CONCRETE APRON STONE 5' STANDARD 7.1.7	9
702.9901	BIORETENTION CURB INLET PLANTER	9
705.1300	RECONSTRUCT CB TYPE 'D' TO CATCH BASIN WITH GUTTER INLET	9
707.1200	ADJUST CATCH BASIN TO MANHOLE	10
707.1900	ADJUST FRAME & COVER TO GRADE	10
708.9040	CLEANING AND FLUSHING PIPE ALL SIZES	10
708.9041	CLEANING CATCH BASINS ALL TYPES AND SIZES	11
713.8269	ADJUST WATER GATE BOXES TO GRADE	11
713.8300	ADJUST GAS GATE BOXES TO GRADE	11
905.0110	PORTLAND CEMENT SIDEWALK MONOLITHIC STANDARD 43.1.0	12
906.0110	GRANITE CURB, QUARRY SPLIT STRAIGHT, STANDARD 7.3.0	12
906.0111	GRANITE CURB, QUARRY SPLIT CIRCULAR, STANDARD 7.3.0	12
906.0118	6' GRANITE TRANSITION CURB, QUARRY SPLIT SPECIAL TRANSITION STANDARD 7.3.2	13
906.0130	GRANITE RAMP STONE STRAIGHT STANDARD 7.3.9	13
906.0210	CEMENT CONCRETE CURB PRECAST STRAIGHT STANDARD 7.1.0	13
906.0211	CEMENT CONCRETE CURB PRECAST CIRCULAR STANDARD 7.1.0	14
906.0212	CEMENT CONCRETE CURB PRECAST 2' CORNER STANDARD 7.1.4	15
906.0221	6' PRECAST CONCRETE TRANSITION CURB STANDARD 7.1.2	15
906.0250	PRECAST CONCRETE WHEELCHAIR RAMP CURB STANDARDS 7.1.3, 43.3.0 AND 43.3.1	16

Table of Contents - Distribution of Quantities

Project Name - STC Improvements 2020

Estimate Name - Addendum No. 1

R.I. Contract No. - 2020-CT-034

FAP Nos: STPG-8888(244)

ItemCode	Description	Page
906.0260	PRECAST CONCRETE RAMP STONE 12-INCH STRAIGHT STANDARD 7.1.9	16
906.0261	PRECAST CONCRETE RAMP STONE 12-INCH CIRCULAR STANDARD 7.1.9	17
906.0280	3' PRECAST CONCRETE TRANSITION CURB STANDARD 7.1.1	17
907.0100	WATER FOR DUST CONTROL	17
914.5010	FLAGPERSONS	18
914.5020	FLAGPERSONS - OVERTIME	18
919.0101	TEST PITS	18
922.0100	TEMPORARY CONSTRUCTION SIGNS STANDARD 29.1.0 AND 27.1.1	18
923.0120	PLASTIC PIPE BARRICADE STANDARD 26.3.0	19
923.0200	FLUORESCENT TRAFFIC CONES STANDARD 26.1.0	19
924.0113	ADVANCE WARNING ARROW PANEL	19
928.0500	SHADOW OR ADVANCE WARNING VEHICLE WITH IMPACT ATTENUATOR AND FLASHING ARROW BOARD	19
929.0110	FIELD OFFICE	19
932.0200	FULL-DEPTH SAWCUT OF BITUMINOUS PAVEMENT	20
932.0230	FULL DEPTH SAWCUT OF PORTLAND CEMENT CONCRETE SIDEWALK/DRIVEWAY	20
936.0100	MOBILIZATION AND DEMOBILIZATION	20
937.0200	MAINTENANCE AND MOVEMENT TRAFFIC PROTECTION	21
942.0200	DETECTABLE WARNING PANEL STANDARD 48.1.0	21
999.9901	INSTALLATION OF TRAFFIC SIGNAL SYSTEM NO. 1A	21
999.9902	INSTALLATION OF TRAFFIC SIGNAL SYSTEM NO. 1B	22
999.9903	INSTALLATION OF TRAFFIC SIGNAL SYSTEM NO. 3	22
999.9904	INSTALLATION OF TRAFFIC SIGNAL SYSTEM NO. 4	22
999.9905	REMOVAL OF TRAFFIC SIGNAL SYSTEM NO. 5	22
L01.0102	LOAM BORROW 4 INCHES DEEP	22
L02.0102	RESIDENTIAL SEEDING (TYPE 2)	23
L06.0513	WOOD CHIPS FURNISH AND SPREAD 4'' DEPTH	23
T15.0100	DIRECTIONAL REGULATORY AND WARNING SIGNS	23
T15.0200	REMOVE AND RELOCATE DIRECTIONAL REGULATORY AND WARNING SIGN	25
T15.1100	STREET SIGN - OVERHEAD MOUNTED	25
T15.9901	LED FLASHING STOP SIGN ASSEMBLY	26
T15.9902	LED FLASHING STOP AHEAD SIGN ASSEMBLY	26
T20.2406	6 INCH WHITE FINAL EPOXY RESIN PAVEMENT MARKINGS	26
T20.2412	12 INCH WHITE FINAL EPOXY RESIN PAVEMENT MARKINGS	28
T20.2804	4 INCH YELLOW FINAL EPOXY RESIN PAVEMENT MARKINGS	29
T20.2812	12 INCH YELLOW FINAL EPOXY RESIN PAVEMENT MARKINGS	29
T20.3401	FINAL EPOXY RESIN PAVEMENT MARKING SYMBOL - ARROW (STRAIGHT, LEFT, RIGHT OR COMBINED) STANDARD 20.1.0	30
T20.3410	FINAL EPOXY RESIN PAVEMENT MARKING WORD ("ONLY", "STOP", "YIELD", "AHEAD", "XING", "SCHOOL", OR OTHER) STANDARD 20.1.0	30
T20.4506	REMOVE PAVEMENT MARKING LINE - LESS THAN OR EQUAL TO 6 INCHES WIDE	31

Table of Contents - Distribution of Quantities

Project Name - STC Improvements 2020

Estimate Name - Addendum No. 1

R.I. Contract No. - 2020-CT-034

FAP Nos: STPG-8888(244)

ItemCode	Description	Page
T20.4508	REMOVE PAVEMENT MARKING LINE - GREATER THAN 6 INCHES WIDE	32
T20.4511	REMOVE PAVEMENT MARKING SYMBOL - ARROW (STRAIGHT, LEFT, RIGHT OR COMBINED)	34
T20.4520	REMOVE PAVEMENT MARKING WORD ("ONLY", "STOP", "YIELD", "AHEAD", "XING", "SCHOOL", OR OTHER)	34
410.1000	TEMPORARY PATCHING MATERIAL/TRENCHES	35

Distribution of Quantities

Project Name - STC Improvements 2020
 Estimate Name - Addendum No. 1
 R.I. Contract No. - 2020-CT-034
 FAP Nos: STPG-8888(244)

Item No.	Item Code	Description	UM	Qty.	Pay Code	Seq. No.
001	201.0402	REMOVE AND DISPOSE CONCRETE CURB	LF			
		DOUGLAS AVENUE AT CUSHING STREET				
		STA. 500+08 TO STA. 500+30 LT		22.00	0021	01
		STA. 500+08 TO STA. 500+43 RT		36.00	0021	01
		STA. 501+12 TO STA. 501+21 RT		26.00	0021	01
		STA. 501+29 TO STA. 501+38 RT		10.00	0021	01
		POST ROAD AT CAMP AVENUE				
		STA. 20+30 TO STA. 21+25 RT		112.00	0021	01
		STA. 21+49 TO STA. 21+61 LT		23.00	0021	01
		STA. 21+61 TO STA. 21+99 RT		49.00	0021	01
		STA. 21+78 TO STA. 21+80 LT		5.00	0021	01
		POST ROAD AT OAKDALE ROAD				
		STA. 47+62 TO STA. 47+81 LT		19.00	0021	01
		STA. 47+72 TO STA. 47+97 RT		42.00	0021	01
		STA. 48+27 TO STA. 48+50 RT		39.00	0021	01
Item 201.0402 Total:				383.00		
002	201.0403	REMOVE AND DISPOSE SIDEWALKS	SY			
		DOUGLAS AVENUE AT CUSHING STREET				
		STA. 500+08 TO STA. 500+30 LT		14.00	0021	01
		STA. 500+08 TO STA. 500+43 RT		27.00	0021	01
		STA. 501+13 TO STA. 501+38 RT		57.00	0021	01
Item 201.0403 Total:				98.00		
003	201.0409	REMOVE AND DISPOSE FLEXIBLE PAVEMENT	SY			
		DOUGLAS AVENUE AT CUSHING STREET				
		STA. 500+08 TO STA. 500+30 LT		3.00	0021	01
		STA. 500+08 TO STA. 500+80 RT		81.00	0021	01
		STA. 501+09 TO STA. 501+38 RT		37.00	0021	01
		POST ROAD AT CAMP AVENUE				
		STA. 20+09 TO STA. 20+39 LT		31.00	0021	01
		STA. 20+30 TO STA. 21+26 RT		13.00	0021	01

Distribution of Quantities

Project Name - STC Improvements 2020

Estimate Name - Addendum No. 1

R.I. Contract No. - 2020-CT-034

FAP Nos: STPG-8888(244)

Item No.	Item Code	Description	UM	Qty.	Pay Code	Seq. No.
003	201.0409	Cont.	STA. 20+72 TO STA. 21+10	LT	66.00	0021 01

Distribution of Quantities

Project Name - STC Improvements 2020
 Estimate Name - Addendum No. 1
 R.I. Contract No. - 2020-CT-034
 FAP Nos: STPG-8888(244)

Item No.	Item Code	Description	UM	Qty.	Pay Code	Seq. No.
003	201.0409	Cont.				
		STA. 21+48 TO STA. 21+94 LT		23.00	0021	01
		STA. 21+61 TO STA. 21+99 RT		6.00	0021	01
		POST ROAD AT OAKDALE ROAD				
		STA. 47+72 TO STA. 47+98 RT		5.00	0021	01
		STA. 47+75 TO STA. 47+90 LT		9.00	0021	01
		STA. 48+26 TO STA. 48+77 LT		9.00	0021	01
		STA. 48+37 TO STA. 48+76 RT		9.00	0021	01
Item 201.0409 Total:				292.00		
004	201.0428	REMOVE AND DISPOSE FRAME AND GRATE	EACH			
		OR FRAME AND COVER				
		DOUGLAS AVENUE AT CUSHING STREET				
		STA. 500+47 RT		2.00	0021	01
Item 201.0428 Total:				2.00		
005	201.0610	REMOVE AND DISPOSE DIRECTIONAL,	EACH			
		WARNING, REGULATORY, SERVICE, AND				
		STREET SIGNS				
		DUNNS CORNER ROAD AT POST ROAD				
		STA. 32+12 LT		1.00	0021	01
		STA. 37+22 LT		1.00	0021	01
		STA. 37+53 LT		1.00	0021	01
		GALILEE ESCAPE ROAD				
		STA. 200+45 LT		3.00	0021	01
		STA. 200+49 LT		2.00	0021	01
		STA. 204+73		2.00	0021	01
		STA. 204+73 LT		2.00	0021	01
		POST ROAD AT CAMP AVENUE				
		STA. 21+03 LT		1.00	0021	01
		STA. 21+66 RT		1.00	0021	01
		POST ROAD AT OAKDALE ROAD				
		STA. 46+86 RT		1.00	0021	01
		STA. 47+83 LT		1.00	0021	01

Distribution of Quantities

Project Name - STC Improvements 2020
 Estimate Name - Addendum No. 1
 R.I. Contract No. - 2020-CT-034
 FAP Nos: STPG-8888(244)

Item No.	Item Code	Description	UM	Qty.	Pay Code	Seq. No.
011	201.9906	REMOVE, STOCKPILE AND RESET WOOD WALL	LF			
		DOUGLAS AVENUE AT CUSHING STREET				
		STA. 500+25 TO STA. 500+33 LT		8.00	0021	01
Item 201.9906 Total:				8.00		
012	202.0100	EARTH EXCAVATION	CY			
		DOUGLAS AVENUE AT CUSHING STREET				
		STA. 500+08 TO STA. 500+25 LT		1.00	0021	01
		STA. 500+08 TO STA. 500+30 LT		5.00	0021	01
		STA. 500+08 TO STA. 500+60 RT		14.00	0021	01
		STA. 500+08 TO STA. 500+81 RT		11.00	0021	01
		STA. 500+60 TO STA. 500+76 RT		5.00	0021	01
		STA. 501+00 TO STA. 501+32 RT		9.00	0021	01
		STA. 501+10 TO STA. 501+29 RT		16.00	0021	01
		STA. 501+32 TO STA. 501+38 RT		2.00	0021	01
		POST ROAD AT CAMP AVENUE				
		STA. 20+11 TO STA. 20+37		2.00	0021	01
		STA. 20+30 TO STA. 21+25 RT		4.00	0021	01
		STA. 20+73 TO STA. 20+85 LT		1.00	0021	01
		STA. 20+85 TO STA. 21+06 LT		10.00	0021	01
		STA. 20+87 TO STA. 21+15 RT		8.00	0021	01
		STA. 21+00 TO STA. 21+07 LT		1.00	0021	01
		STA. 21+15 TO STA. 21+24 RT		4.00	0021	01
		STA. 21+50 TO STA. 21+93 LT		3.00	0021	01
		STA. 21+53 TO STA. 21+73 LT		7.00	0021	01
		STA. 21+62 TO STA. 21+72 RT		6.00	0021	01
		STA. 21+62 TO STA. 21+99 RT		4.00	0021	01
		POST ROAD AT OAKDALE ROAD				
		STA. 47+62 TO STA. 47+89 LT		2.00	0021	01
		STA. 47+72 TO STA. 47+96 RT		7.00	0021	01
		STA. 47+75 TO STA. 47+89 LT		7.00	0021	01
		STA. 47+79 TO STA. 47+95 RT		6.00	0021	01

Distribution of Quantities

Project Name - STC Improvements 2020

Estimate Name - Addendum No. 1

R.I. Contract No. - 2020-CT-034

FAP Nos: STPG-8888(244)

Item No.	Item Code	Description	UM	Qty.	Pay Code	Seq. No.
012	202.0100	Cont.	STA. 48+32 TO STA. 48+42 RT	3.00	0021	01

Distribution of Quantities

Project Name - STC Improvements 2020
 Estimate Name - Addendum No. 1
 R.I. Contract No. - 2020-CT-034
 FAP Nos: STPG-8888(244)

Item No.	Item Code	Description	UM	Qty.	Pay Code	Seq. No.
012	202.0100	Cont.				
		STA. 48+39 TO STA. 48+60 LT	LT	6.00	0021	01
		STA. 48+39 TO STA. 48+76 LT	LT	3.00	0021	01
		STA. 48+42 TO STA. 48+57 RT	RT	4.00	0021	01
Item 202.0100 Total:				151.00		
013	202.0700	COMMON BORROW	CY			
		PROJECT WIDE				
		AS NEEDED		10.00	0021	01
Item 202.0700 Total:				10.00		
014	202.9901	HANDLING, HAULING, STOCKPILING, AND MANAGEMENT OF CONTAMINATED SOILS	LS			
		PROJECT WIDE				
		AS NEEDED		1.00	0021	01
Item 202.9901 Total:				1.00		
015	202.9902	LOAD AND HAUL CONTAMINATED SOIL, TYPE 1	TON			
		PROJECT WIDE				
		AS NEEDED		90.00	0021	01
Item 202.9902 Total:				90.00		
016	202.9903	DISPOSAL OF CONTAMINATED SOIL, TYPE 1	TON			
		PROJECT WIDE				
		AS NEEDED		90.00	0021	01
Item 202.9903 Total:				90.00		
017	202.9904	LOAD AND HAUL CONTAMINATED SOIL, TYPE 2	TON			
		PROJECT WIDE				
		AS NEEDED		90.00	0021	01

Distribution of Quantities

Project Name - STC Improvements 2020
 Estimate Name - Addendum No. 1
 R.I. Contract No. - 2020-CT-034
 FAP Nos: STPG-8888(244)

Item No.	Item Code	Description	UM	Qty.	Pay Code	Seq. No.
017	202.9904	Cont.				
				Item 202.9904 Total:		
				90.00		
018	202.9905	DISPOSAL OF CONTAMINATED SOIL, TYPE 2	TON			
		PROJECT WIDE				
		AS NEEDED		90.00	0021	01
				Item 202.9905 Total:		
				90.00		
019	202.9906	LOAD, HAUL, AND DISPOSAL OF OTHER WASTE	TON			
		PROJECT WIDE				
		AS NEEDED		10.00	0021	01
				Item 202.9906 Total:		
				10.00		
020	203.9901	DEWATERING	LS			
		PROJECT WIDE				
		PROJECT WIDE		1.00	0021	01
				Item 203.9901 Total:		
				1.00		
021	204.0100	TRIMMING AND FINE GRADING	SY			
		PROJECT WIDE				
		FROM ITEM 905.0110		260.00	0021	01
		FROM ITEM L01.0102		172.00	0021	01
		FROM ITEM L06.0513		3.00	0021	01
				Item 204.0100 Total:		
				435.00		
022	206.0301	COMPOST FILTER SOCK	LF			
		POST ROAD AT CAMP AVENUE				
		STA. 20+29 TO STA. 21+24 RT		110.00	0021	01
		STA. 21+49 TO STA. 21+77 LT		35.00	0021	01
		STA. 21+62 TO STA. 21+99 RT		52.00	0021	01
		POST ROAD AT OAKDALE ROAD				
		STA. 47+61 TO STA. 47+82 LT		35.00	0021	01

Distribution of Quantities

Project Name - STC Improvements 2020
 Estimate Name - Addendum No. 1
 R.I. Contract No. - 2020-CT-034
 FAP Nos: STPG-8888(244)

Item No.	Item Code	Description	UM	Qty.	Pay Code	Seq. No.
022	206.0301	Cont.				
		STA. 47+70 LT		5.00	0021	01
		STA. 47+70 RT		5.00	0021	01
		STA. 47+72 TO STA. 47+96 RT		40.00	0021	01
		STA. 48+28 TO STA. 48+78 RT		67.00	0021	01
		STA. 48+46 TO STA. 48+76 LT		39.00	0021	01
Item 206.0301 Total:				388.00		
023	209.9901	INLET PROTECTION	EACH			
		DOUGLAS AVENUE AT CUSHING STREET				
		STA. 500+45 LT		1.00	0021	01
		STA. 500+47 RT		2.00	0021	01
		STA. 500+96 RT		1.00	0021	01
		STA. 501+21 RT		1.00	0021	01
		POST ROAD AT CAMP AVENUE				
		STA. 21+02 LT		1.00	0021	01
		STA. 21+47 RT		1.00	0021	01
		STA. 21+57 LT		1.00	0021	01
		STA. 21+62 RT		1.00	0021	01
		POST ROAD AT OAKDALE AVENUE				
		STA. 48+77 LT		1.00	0021	01
Item 209.9901 Total:				10.00		
024	212.2100	MAINTENANCE AND CLEANING OF	LS			
		EROSION AND POLLUTION CONTROLS				
		PROJECT WIDE				
		PROJECT WIDE		1.00	0021	01
Item 212.2100 Total:				1.00		
025	302.0100	GRAVEL BORROW SUBBASE COURSE	CY			
		DOUGLAS AVENUE AT CUSHING STREET				
		STA. 500+08 TO 500+78 RT		11.00	0021	01
		STA. 501+00 TO STA. 501+32 RT		9.00	0021	01
		PROJECT WIDE				

Distribution of Quantities

Project Name - STC Improvements 2020
 Estimate Name - Addendum No. 1
 R.I. Contract No. - 2020-CT-034
 FAP Nos: STPG-8888(244)

Item No.	Item Code	Description	UM	Qty.	Pay Code	Seq. No.
025	302.0100	Cont.				
		FROM ITEM 905.0110		58.00	0021	01
		FROM ITEM 906.0210		20.00	0021	01
		FROM ITEM 906.0211		14.00	0021	01
Item 302.0100 Total:				112.00		
026	401.2100	MODIFIED CLASS 12.5 HMA	TON			
		DOUGLAS AVENUE AT CUSHING STREET				
		STA. 500+08 TO 500+78 RT		10.00	0021	01
		STA. 501+00 TO STA. 501+32 RT		8.00	0021	01
		PROJECT WIDE				
		FROM ITEM 601.0200		17.00	0021	01
Item 401.2100 Total:				35.00		
027	403.0300	ASPHALT EMULSION TACK COAT	SY			
		PROJECT WIDE				
		FROM ITEM 601.0200		126.00	0021	01
Item 403.0300 Total:				126.00		
028	601.0200	CLASS XX PORTLAND CEMENT CONCRETE	CY			
		DOUGLAS AVENUE AT CUSHING STREET				
		STA. 201+32 TO STA. 501+38 RT		0.50	0021	01
		STA. 500+08 TO STA. 500+30 LT		1.00	0021	01
		STA. 500+08 TO STA. 500+77 RT		10.00	0021	01
		STA. 501+10 TO STA. 501+20 RT		1.00	0021	01
		POST ROAD AT CAMP AVENUE				
		STA. 20+10 TO STA. 20+39 LT		3.50	0021	01
		STA. 20+30 TO STA. 21+25 RT		4.50	0021	01
		STA. 20+72 TO STA. 21+10 LT		5.00	0021	01
		STA. 21+48 TO STA. 21+94 LT		3.50	0021	01
		STA. 21+60 TO STA. 21+98 RT		2.00	0021	01
		POST ROAD AT OAKDALE ROAD				
		STA. 47+62 TO STA. 47+90 LT		3.00	0021	01
		STA. 47+72 TO STA. 47+97 RT		2.50	0021	01

Distribution of Quantities

Project Name - STC Improvements 2020

Estimate Name - Addendum No. 1

R.I. Contract No. - 2020-CT-034

FAP Nos: STPG-8888(244)

Item No.	Item Code	Description	UM	Qty.	Pay Code	Seq. No.
028	601.0200	Cont.	STA. 48+26 TO STA. 48+77 RT	3.00	0021	01

Distribution of Quantities

Project Name - STC Improvements 2020
 Estimate Name - Addendum No. 1
 R.I. Contract No. - 2020-CT-034
 FAP Nos: STPG-8888(244)

Item No.	Item Code	Description	UM	Qty.	Pay Code	Seq. No.
028	601.0200	Cont.				
		STA. 48+37 TO STA. 48+75 LT		2.50	0021	01
Item 601.0200 Total:				42.00		
029	702.0511	FRAME AND COVER STANDARD 6.1.0	EACH			
		DOUGLAS AVENUE AT CUSHING STREET				
		STA. 500+47 RT		2.00	0021	01
Item 702.0511 Total:				2.00		
030	702.0517	FRAME AND GRATE, STANDARD 6.3.2	EACH			
		DOUGLAS AVENUE AT CUSHING STREET				
		STA. 500+47 RT		1.00	0021	01
Item 702.0517 Total:				1.00		
031	702.0531	PRECAST CONCRETE INLET STONE 38''	EACH			
		STANDARD 7.1.6				
		DOUGLAS AVENUE AT CUSHING STREET				
		STA. 500+47 RT		1.00	0021	01
		POST ROAD AT OAKDALE ROAD				
		STA. 47+70 LT		1.00	0021	01
Item 702.0531 Total:				2.00		
032	702.0532	PRECAST CONCRETE APRON STONE 5'	EACH			
		STANDARD 7.1.7				
		DOUGLAS AVENUE AT CUSHING STREET				
		STA. 500+47 RT		1.00	0021	01
Item 702.0532 Total:				1.00		
033	702.9901	BIORETENTION CURB INLET PLANTER	EACH			
		POST ROAD AT CAMP AVENUE				
		STA. 20+46 RT		1.00	0021	01
		STA. 20+65 LT			0021	01
		STA. 21+71 RT		1.00	0021	01
Item 702.9901 Total:				2.00		

Distribution of Quantities

Project Name - STC Improvements 2020

Estimate Name - Addendum No. 1

R.I. Contract No. - 2020-CT-034

FAP Nos: STPG-8888(244)

Item No.	Item Code	Description	UM	Qty.	Pay Code	Seq. No.
034	705.1300	RECONSTRUCT CB TYPE 'D' TO CATCH BASIN WITH GUTTER INLET DOUGLAS AVENUE AT CUSHING STREET	EACH			

Distribution of Quantities

Project Name - STC Improvements 2020
 Estimate Name - Addendum No. 1
 R.I. Contract No. - 2020-CT-034
 FAP Nos: STPG-8888(244)

Item No.	Item Code	Description	UM	Qty.	Pay Code	Seq. No.
043	906.0111	Cont. CIRCULAR, STANDARD 7.3.0				
		DOUGLAS AVENUE AT CUSHING STREET				
		STA. 501+12 TO STA. 501+14 RT		12.00	0021	01
Item 906.0111 Total:				12.00		
044	906.0118	6' GRANITE TRANSITION CURB, QUARRY SPLIT SPECIAL TRANSITION STANDARD 7.3.2	EACH			
		DOUGLAS AVENUE AT CUSHING STREET				
		STA. 501+14 RT		1.00	0021	01
Item 906.0118 Total:				1.00		
045	906.0130	GRANITE RAMP STONE STRAIGHT STANDARD 7.3.9	EACH			
		DOUGLAS AVENUE AT CUSHING STREET				
		STA. 501+32 RT		1.00	0021	01
Item 906.0130 Total:				1.00		
046	906.0210	CEMENT CONCRETE CURB PRECAST STRAIGHT STANDARD 7.1.0	LF			
		DOUGLAS AVENUE AT CUSHING STREET				
		STA. 500+14 TO STA. 500+20 LT		6.00	0021	01
		STA. 500+14 TO STA. 500+20 RT		6.00	0021	01
		STA. 500+30 TO STA. 500+60 RT		31.00	0021	01
		STA. 500+60 TO STA. 500+63 RT		3.00	0021	01
		POST ROAD AT CAMP AVENUE				
		STA. 20+13 TO STA 20+35 LT		22.00	0021	01
		STA. 20+15 TO STA. 20+33 LT		18.00	0021	01
		STA. 20+30 TO STA. 20+80 RT		38.00	0021	01
		STA. 20+84 TO STA. 20+87 RT		3.00	0021	01
		STA. 20+97 TO STA. 21+14 RT		18.00	0021	01
		STA. 21+00 LT		5.00	0021	01
		STA. 21+01 LT		3.00	0021	01

Distribution of Quantities

Project Name - STC Improvements 2020
 Estimate Name - Addendum No. 1
 R.I. Contract No. - 2020-CT-034
 FAP Nos: STPG-8888(244)

Item No.	Item Code	Description	UM	Qty.	Pay Code	Seq. No.
046	906.0210	Cont.				
		STA. 21+07 LT		3.00	0021	01
		STA. 21+08 LT		3.00	0021	01
		STA. 21+25 RT		6.00	0021	01
		STA. 21+62 RT		3.00	0021	01
		STA. 21+77 TO STA. 21+98 RT		22.00	0021	01
		STA. 21+78 TO STA. 21+90 LT		13.00	0021	01
		STA. 21+79 TO STA. 21+90 LT		11.00	0021	01
		POST ROAD AT OAKDALE ROAD				
		STA. 47+62 TO STA. 47+75 LT		9.00	0021	01
		STA. 47+72 TO STA. 47+77 RT		5.00	0021	01
		STA. 47+82 TO STA. 47+87 LT		5.00	0021	01
		STA. 47+90 LT		4.00	0021	01
		STA. 48+39 TO STA. 48+44 LT		7.00	0021	01
		STA. 48+63 TO STA. 48+77 RT		14.00	0021	01
		STA. 48+66 TO STA. 48+71 LT		6.00	0021	01
Item 906.0210 Total:				264.00		
047	906.0211	CEMENT CONCRETE CURB PRECAST	LF			
		CIRCULAR STANDARD 7.1.0				
		DOUGLAS AVENUE AT CUSHING STREET				
		STA. 500+60 TO STA. 500+63 RT		4.00	0021	01
		POST ROAD AT CAMP AVENUE				
		STA. 20+10 TO STA. 20+13 LT		6.00	0021	01
		STA. 20+10 TO STA. 20+15 LT		7.00	0021	01
		STA. 20+33 TO STA. 20+37 LT		7.00	0021	01
		STA. 20+35 TO STA. 20+37 LT		6.00	0021	01
		STA. 20+73 TO STA. 20+73 LT		6.00	0021	01
		STA. 20+73 TO STA. 20+78 LT		7.00	0021	01
		STA. 20+97 TO STA. 21+03 LT		8.00	0021	01
		STA. 21+01 TO STA. 21+06 LT		7.00	0021	01
		STA. 21+06 TO STA. 21+07 LT		3.00	0021	01
		STA. 21+06 TO STA. 21+08 LT		6.00	0021	01
		STA. 21+20 TO STA. 21+23 RT		6.00	0021	01

Distribution of Quantities

Project Name - STC Improvements 2020

Estimate Name - Addendum No. 1

R.I. Contract No. - 2020-CT-034

FAP Nos: STPG-8888(244)

Item No.	Item Code	Description	UM	Qty.	Pay Code	Seq. No.
047	906.0211	Cont.				
		STA. 21+49 TO STA. 21+53	LT	12.00	0021	01
		STA. 21+56 TO STA. 21+60	LT	6.00	0021	01
		STA. 21+61 TO STA. 21+63	RT	6.00	0021	01
		STA. 21+63 TO STA. 21+66	LT	3.00	0021	01

Distribution of Quantities

Project Name - STC Improvements 2020
 Estimate Name - Addendum No. 1
 R.I. Contract No. - 2020-CT-034
 FAP Nos: STPG-8888(244)

Item No.	Item Code	Description	UM	Qty.	Pay Code	Seq. No.
047	906.0211	Cont.				
		STA. 21+69 TO STA. 21+77 RT		7.00	0021	01
		STA. 21+71 TO STA. 21+79 LT		9.00	0021	01
		STA. 21+90 TO STA. 21+93 LT		10.00	0021	01
		POST ROAD AT OAKDALE ROAD				
		STA. 47+77 TO STA. 47+80 RT		3.00	0021	01
		STA. 47+80 TO STA. 47+83 LT		4.00	0021	01
		STA. 47+86 TO STA. 47+90 LT		4.00	0021	01
		STA. 47+87 TO STA. 47+90 LT		6.00	0021	01
		STA. 47+93 TO STA. 47+97 RT		13.00	0021	01
		STA. 48+27 TO STA. 48+32 RT		14.00	0021	01
		STA. 48+38 TO STA. 48+39 LT		5.00	0021	01
		STA. 48+40 TO STA. 48+47 RT		8.00	0021	01
		STA. 48+44 TO STA. 48+50 LT		6.00	0021	01
Item 906.0211 Total:				189.00		
048	906.0212	CEMENT CONCRETE CURB PRECAST 2'	EACH			
		CORNER STANDARD 7.1.4				
		POST ROAD AT OAKDALE ROAD				
		STA. 47+87 LT		1.00	0021	01
Item 906.0212 Total:				1.00		
049	906.0221	6' PRECAST CONCRETE TRANSITION	EACH			
		CURB STANDARD 7.1.2				
		DOUGLAS AVENUE AT CUSHING STREET				
		STA. 500+24 LT		1.00	0021	01
		STA. 500+24 RT		1.00	0021	01
		STA. 501+32 RT		1.00	0021	01
		POST ROAD AT CAMP AVENUE				
		STA. 20+94 LT		1.00	0021	01
		STA. 20+94 RT		1.00	0021	01
		STA. 21+67 RT		1.00	0021	01
		POST ROAD AT OAKDALE ROAD				
		STA. 48+37 RT		1.00	0021	01

Distribution of Quantities

Project Name - STC Improvements 2020

Estimate Name - Addendum No. 1

R.I. Contract No. - 2020-CT-034

FAP Nos: STPG-8888(244)

Item No.	Item Code	Description	UM	Qty.	Pay Code	Seq. No.
064	932.0200	FULL-DEPTH SAWCUT OF BITUMINOUS PAVEMENT	LF			
		DOUGLAS AVENUE AT CUSHING STREET				
		STA. 500+08 TO STA. 500+30 LT		24.00	0021	01
		STA. 500+08 TO STA. 500+78 RT		160.00	0021	01
		STA. 501+00 TO STA. 501+38 RT		86.00	0021	01
		POST ROAD AT CAMP AVENUE				
		STA. 20+09 TO STA. 20+39 LT		78.00	0021	01
		STA. 20+30 TO STA. 21+26 RT		115.00	0021	01
		STA. 20+72 TO STA. 21+10 LT		127.00	0021	01
		STA. 21+48 TO STA. 21+94 LT		86.00	0021	01
		STA. 21+61 TO STA. 21+99 RT		53.00	0021	01
		POST ROAD AT OAKDALE ROAD				
		STA. 47+62 TO STA. 47+91 LT		55.00	0021	01
		STA. 47+72 TO STA. 47+98 RT		46.00	0021	01
		STA. 48+26 TO STA. 48+77 RT		70.00	0021	01
		STA. 48+37 TO STA. 48+76 LT		64.00	0021	01
Item 932.0200 Total:				964.00		
065	932.0230	FULL DEPTH SAWCUT OF PORTLAND CEMENT CONCRETE SIDEWALK/DRIVEWAY	LF			
		DOUGLAS AVENUE AT CUSHING STREET				
		STA. 500+08 LT		6.00	0021	01
		STA. 500+08 RT		7.00	0021	01
		STA. 500+30 LT		6.00	0021	01
		STA. 501+21 TO STA. 501+29 RT		8.00	0021	01
		STA. 501+29 RT		4.00	0021	01
		STA. 501+38 RT		8.00	0021	01
Item 932.0230 Total:				39.00		
066	936.0100	MOBILIZATION AND DEMOBILIZATION	LS			
		PROJECT WIDE				
		PROJECT WIDE		1.00	0021	01

Distribution of Quantities

Project Name - STC Improvements 2020

Estimate Name - Addendum No. 1

R.I. Contract No. - 2020-CT-034

FAP Nos: STPG-8888(244)

Item No.	Item Code	Description	UM	Qty.	Pay Code	Seq. No.
066	936.0100	Cont.				
Item 936.0100 Total:				1.00		

Distribution of Quantities

Project Name - STC Improvements 2020
 Estimate Name - Addendum No. 1
 R.I. Contract No. - 2020-CT-034
 FAP Nos: STPG-8888(244)

Item No.	Item Code	Description	UM	Qty.	Pay Code	Seq. No.
S069	999.9901	Cont.		1.00		
Item 999.9901 Total:				1.00		
S070	999.9902	INSTALLATION OF TRAFFIC SIGNAL SYSTEM NO. 1B PROJECT WIDE AS SHOWN ON PLANS	LS	1.00	0021	01
Item 999.9902 Total:				1.00		
S071	999.9903	INSTALLATION OF TRAFFIC SIGNAL SYSTEM NO. 3 PROJECT WIDE AS SHOWN ON PLANS	LS	1.00	0021	01
Item 999.9903 Total:				1.00		
S072	999.9904	INSTALLATION OF TRAFFIC SIGNAL SYSTEM NO. 4 PROJECT WIDE AS SHOWN ON PLANS	LS	1.00	0021	01
Item 999.9904 Total:				1.00		
S073	999.9905	REMOVAL OF TRAFFIC SIGNAL SYSTEM NO. 5 PROJECT WIDE AS SHOWN ON PLANS	LS	1.00	0021	01
Item 999.9905 Total:				1.00		
074	L01.0102	LOAM BORROW 4 INCHES DEEP POST ROAD AT CAMP AVENUE STA. 20+10 TO STA. 20+37 LT STA. 20+30 TO STA. 21+25 RT STA. 20+73 TO STA. 20+85 LT STA. 21+00 TO STA. 21+07 LT STA. 21+50 TO STA. 21+93 LT	SY	18.00 35.00 8.00 9.00 21.00	0021	01

Distribution of Quantities

Project Name - STC Improvements 2020

Estimate Name - Addendum No. 1

R.I. Contract No. - 2020-CT-034

FAP Nos: STPG-8888(244)

Item No.	Item Code	Description	UM	Qty.	Pay Code	Seq. No.
074	L01.0102	Cont.	STA. 21+62 TO STA. 21+99 RT	30.00	0021	01

Distribution of Quantities

Project Name - STC Improvements 2020
 Estimate Name - Addendum No. 1
 R.I. Contract No. - 2020-CT-034
 FAP Nos: STPG-8888(244)

Item No.	Item Code	Description	UM	Qty.	Pay Code	Seq. No.
074	L01.0102 Cont.	POST ROAD AT OAKDALE ROAD				
		STA. 47+62 TO STA. 47+89 LT		16.00	0021	01
		STA. 47+72 TO STA. 47+96 RT		15.00	0021	01
		STA. 48+39 TO STA. 48+76 LT		20.00	0021	01
Item L01.0102 Total:				172.00		
S075	L02.0102	RESIDENTIAL SEEDING (TYPE 2)	SY			
		POST ROAD AT CAMP AVENUE				
		STA. 20+10 TO STA. 20+37 LT		18.00	0021	01
		STA. 20+30 TO STA. 21+25 RT		35.00	0021	01
		STA. 20+73 TO STA. 20+85 LT		8.00	0021	01
		STA. 21+00 TO STA. 21+07 LT		9.00	0021	01
		STA. 21+50 TO STA. 21+93 LT		21.00	0021	01
		STA. 21+62 TO STA. 21+99 RT		30.00	0021	01
		POST ROAD AT OAKDALE ROAD				
		STA. 47+62 TO STA. 47+89 LT		16.00	0021	01
		STA. 47+72 TO STA. 47+96 RT		15.00	0021	01
		STA. 48+39 TO STA. 48+76 LT		20.00	0021	01
Item L02.0102 Total:				172.00		
076	L06.0513	WOOD CHIPS FURNISH AND SPREAD 4''	SY			
		DEPTH				
		DOUGLAS AVENUE AT CUSHING STREET				
		STA. 500+08 TO STA. 500+25 LT		3.00	0021	01
Item L06.0513 Total:				3.00		
S077	T15.0100	DIRECTIONAL REGULATORY AND WARNING	SF			
		SIGNS				
		BOSTON NECK ROAD AT BRIDGETOWN				
		ROAD				
		STA. 327+31 RT R3-8 (30"X30")		6.50	0021	01
		STA. 328+18 RT R10-6		6.00	0021	01
		(24"X36")				

Distribution of Quantities

Project Name - STC Improvements 2020

Estimate Name - Addendum No. 1

R.I. Contract No. - 2020-CT-034

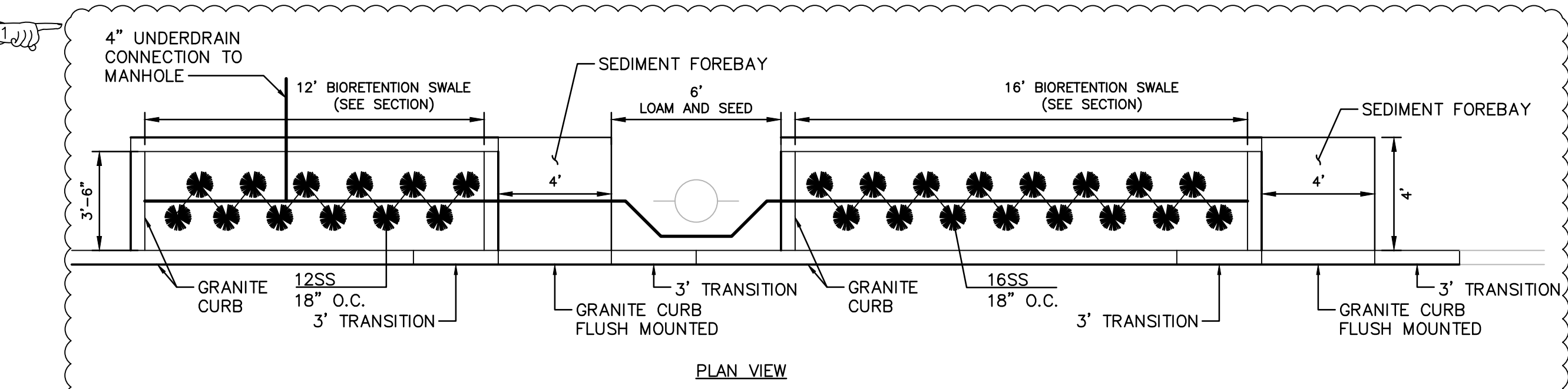
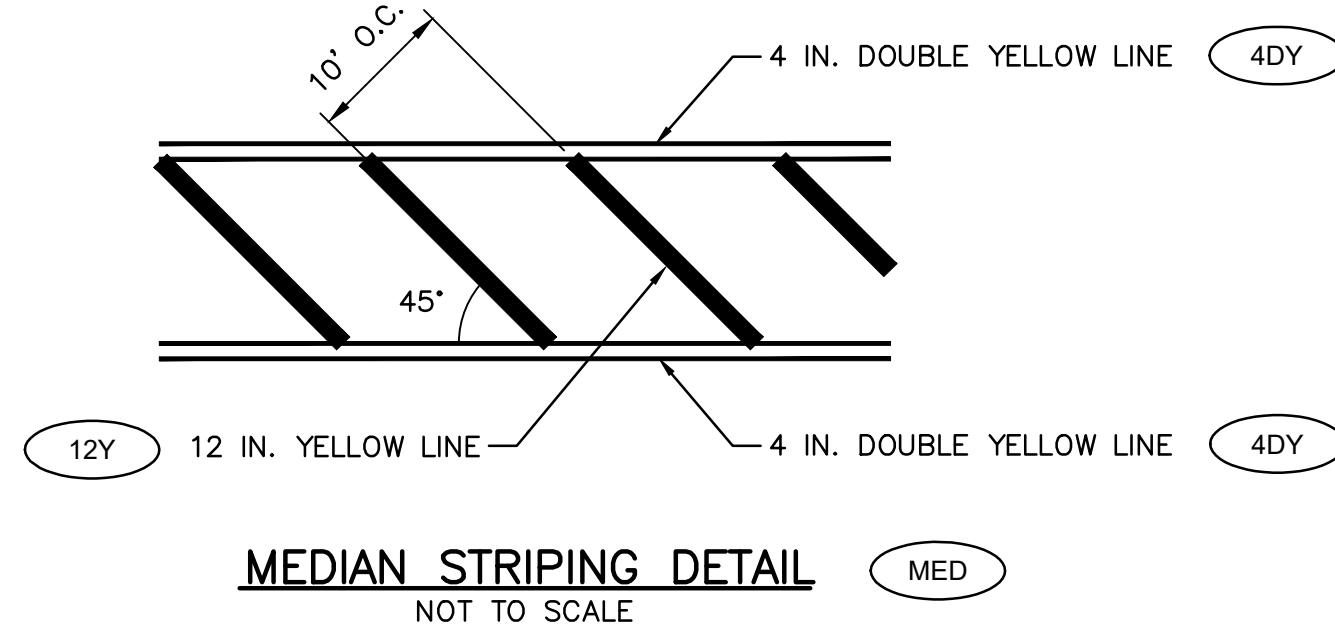
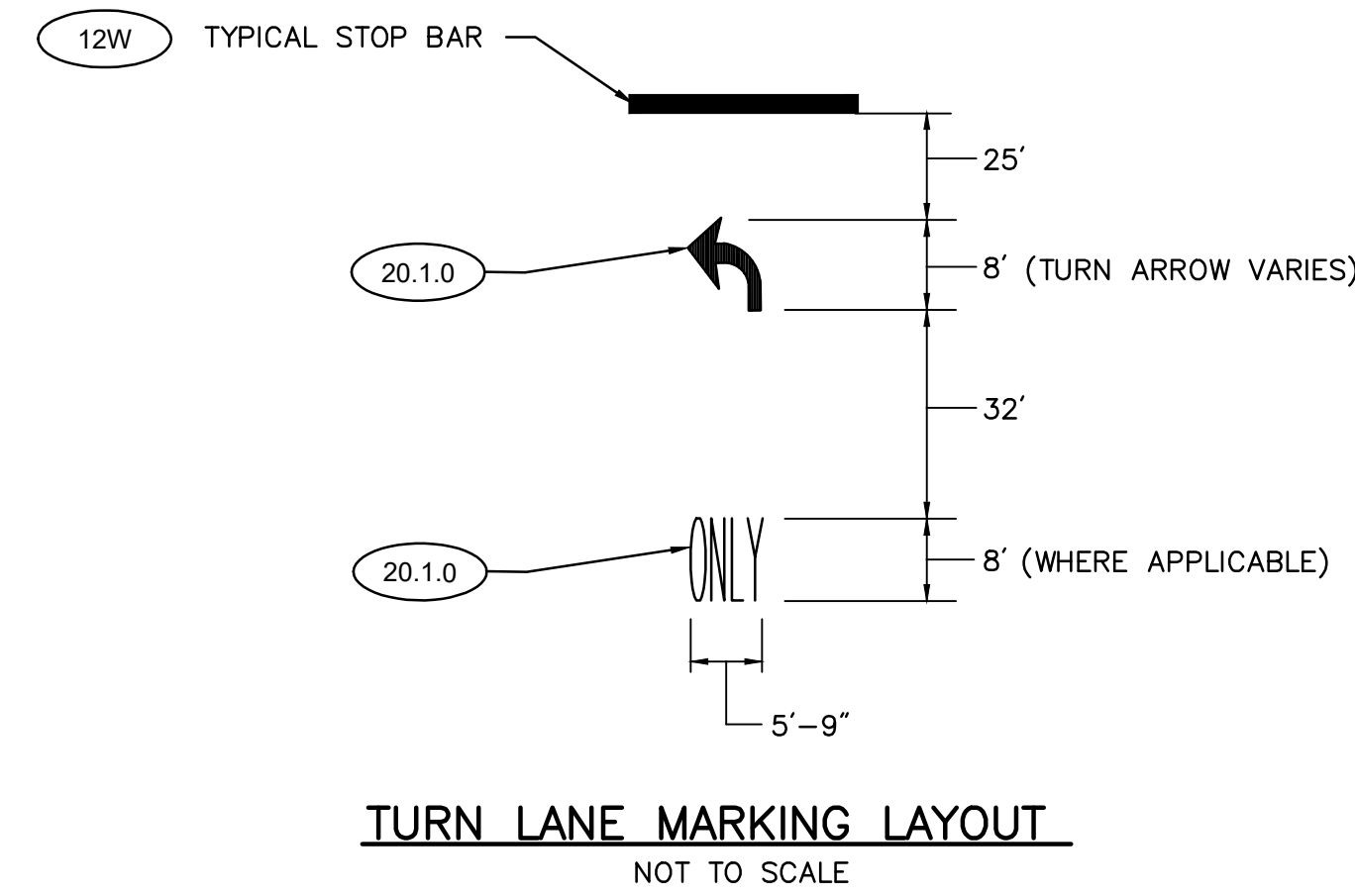
FAP Nos: STPG-8888(244)

Item No.	Item Code	Description	UM	Qty.	Pay Code	Seq. No.
S077	T15.0100	Cont.	STA. 328+32 RT R10-12	7.50	0021	01

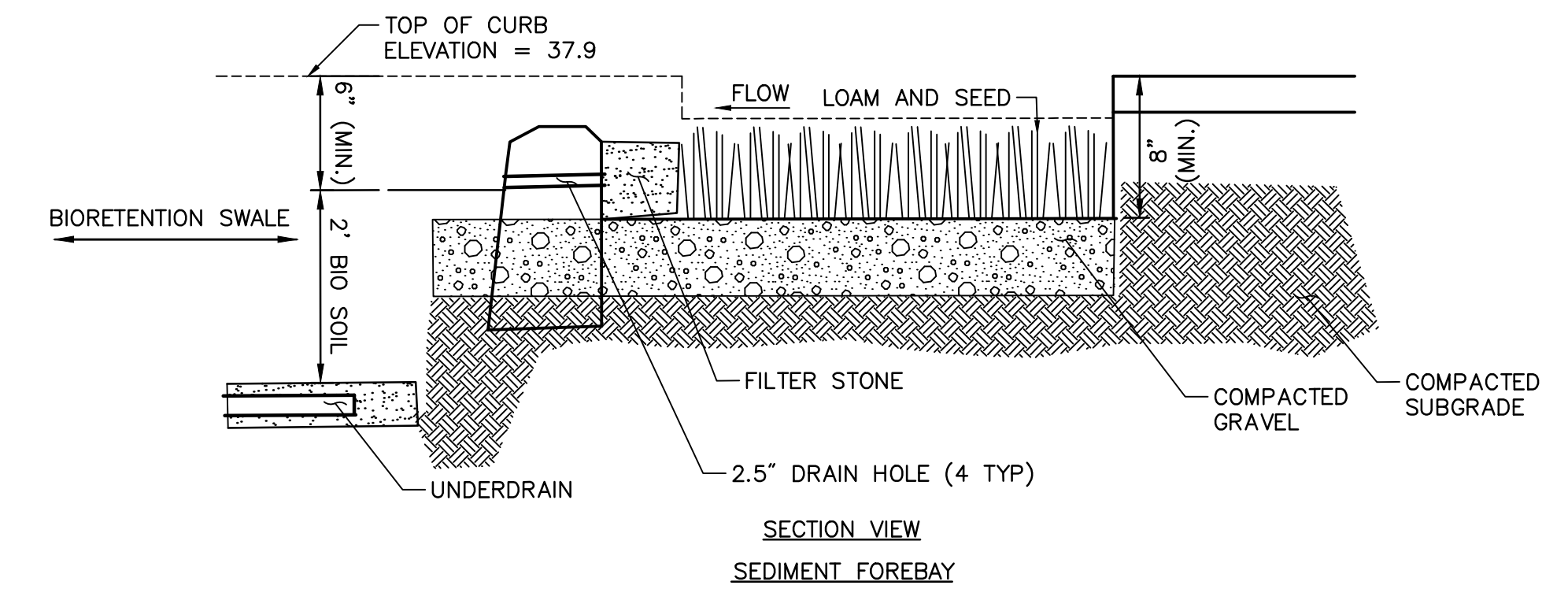
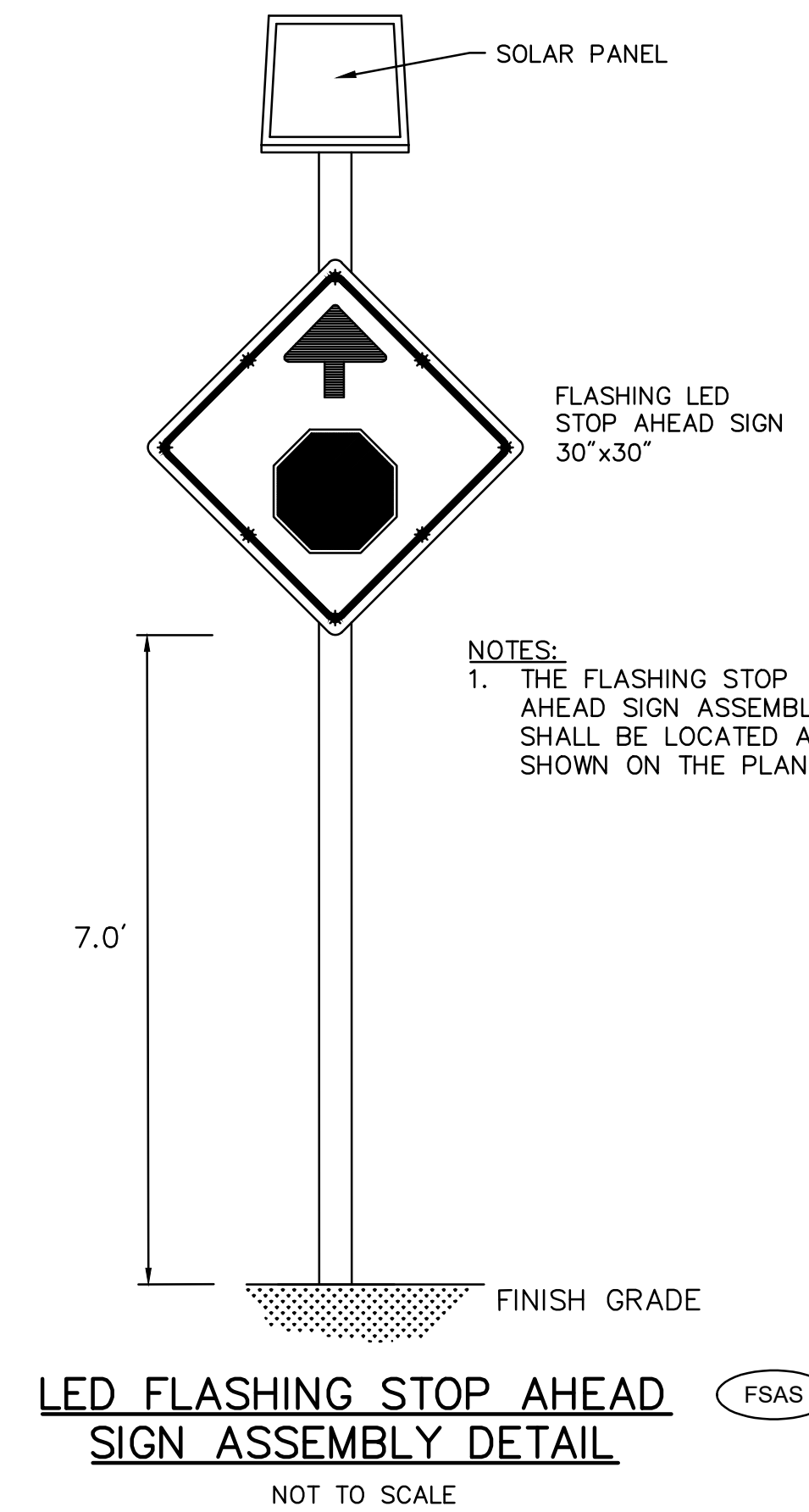
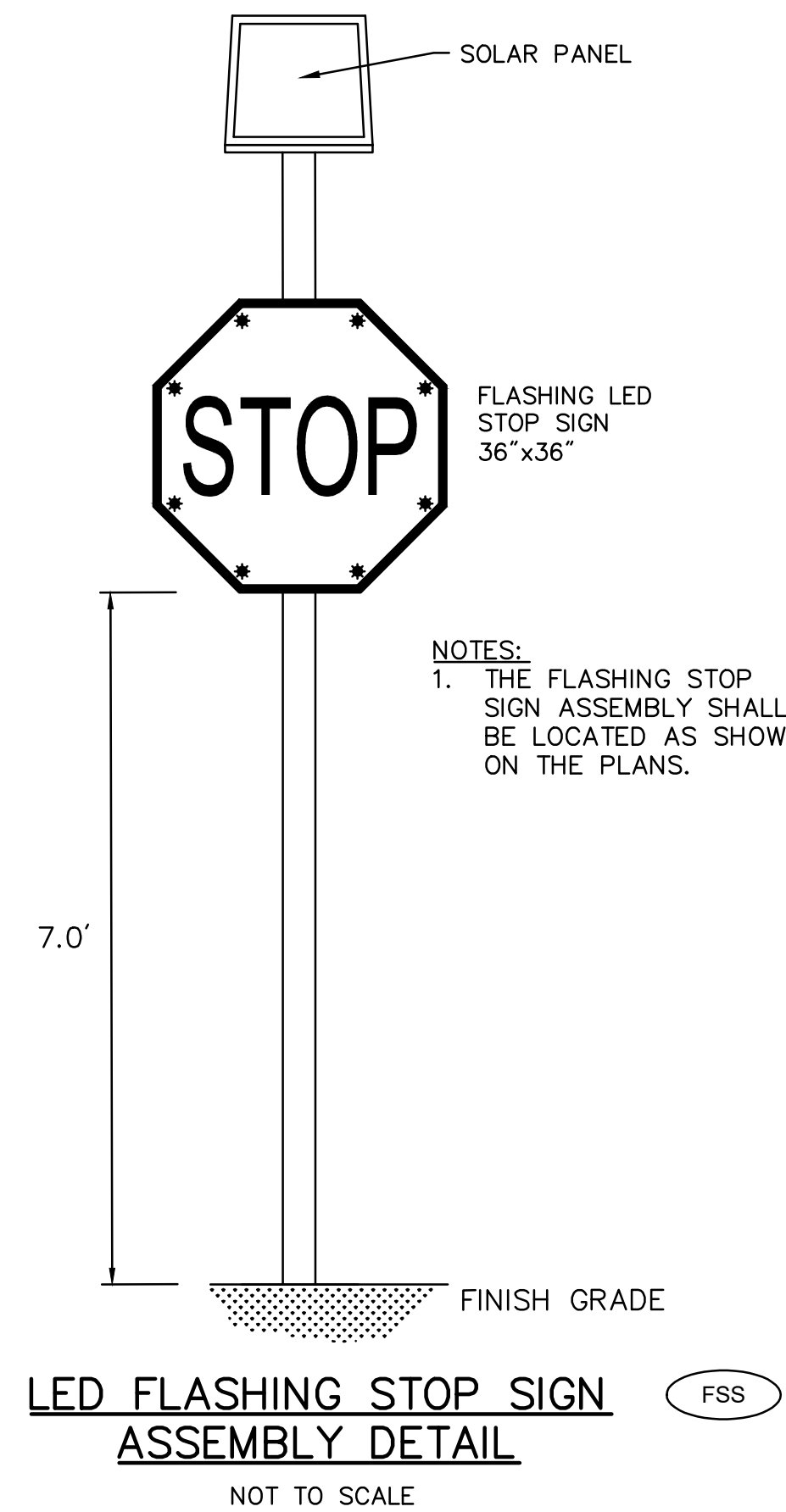
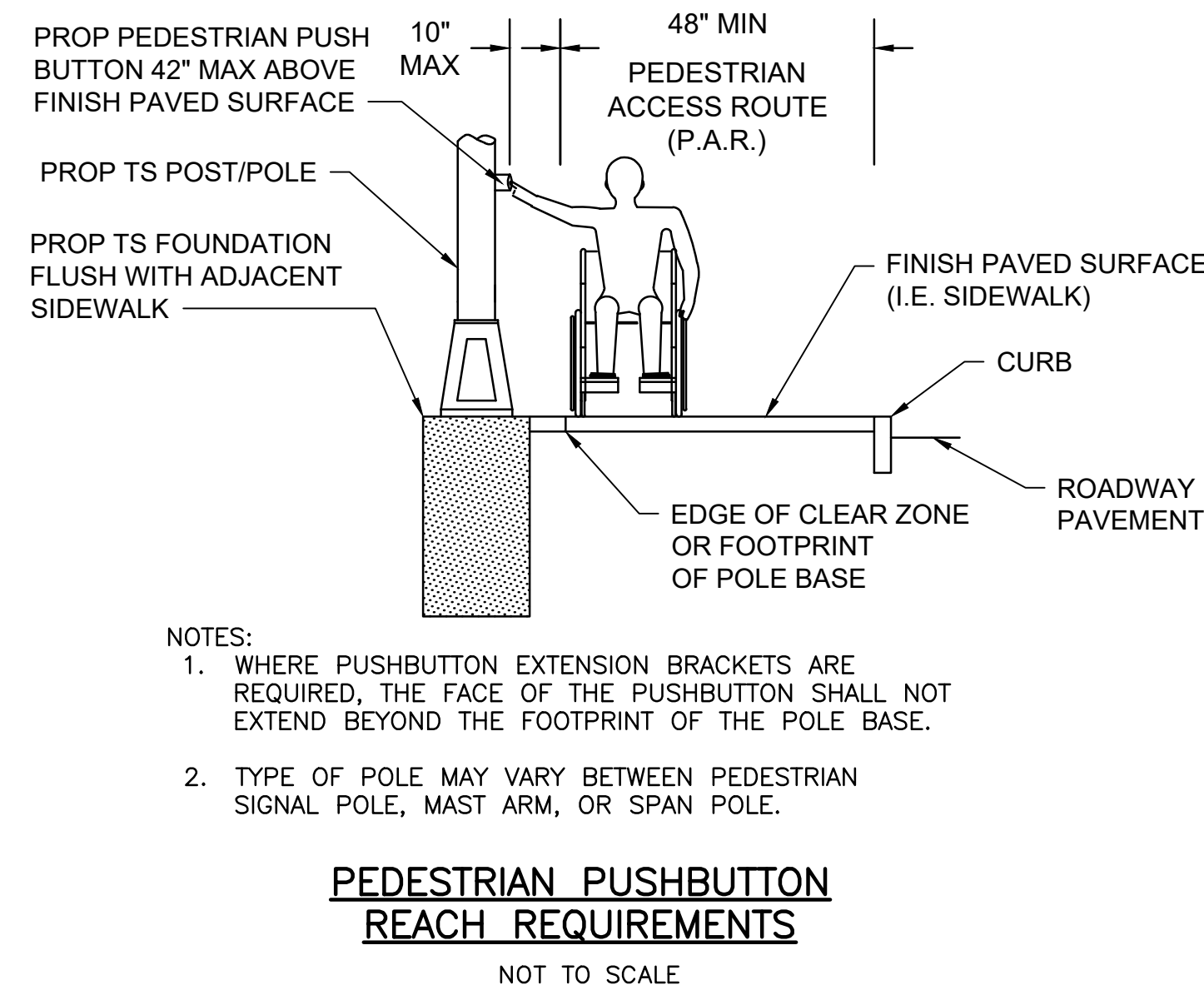
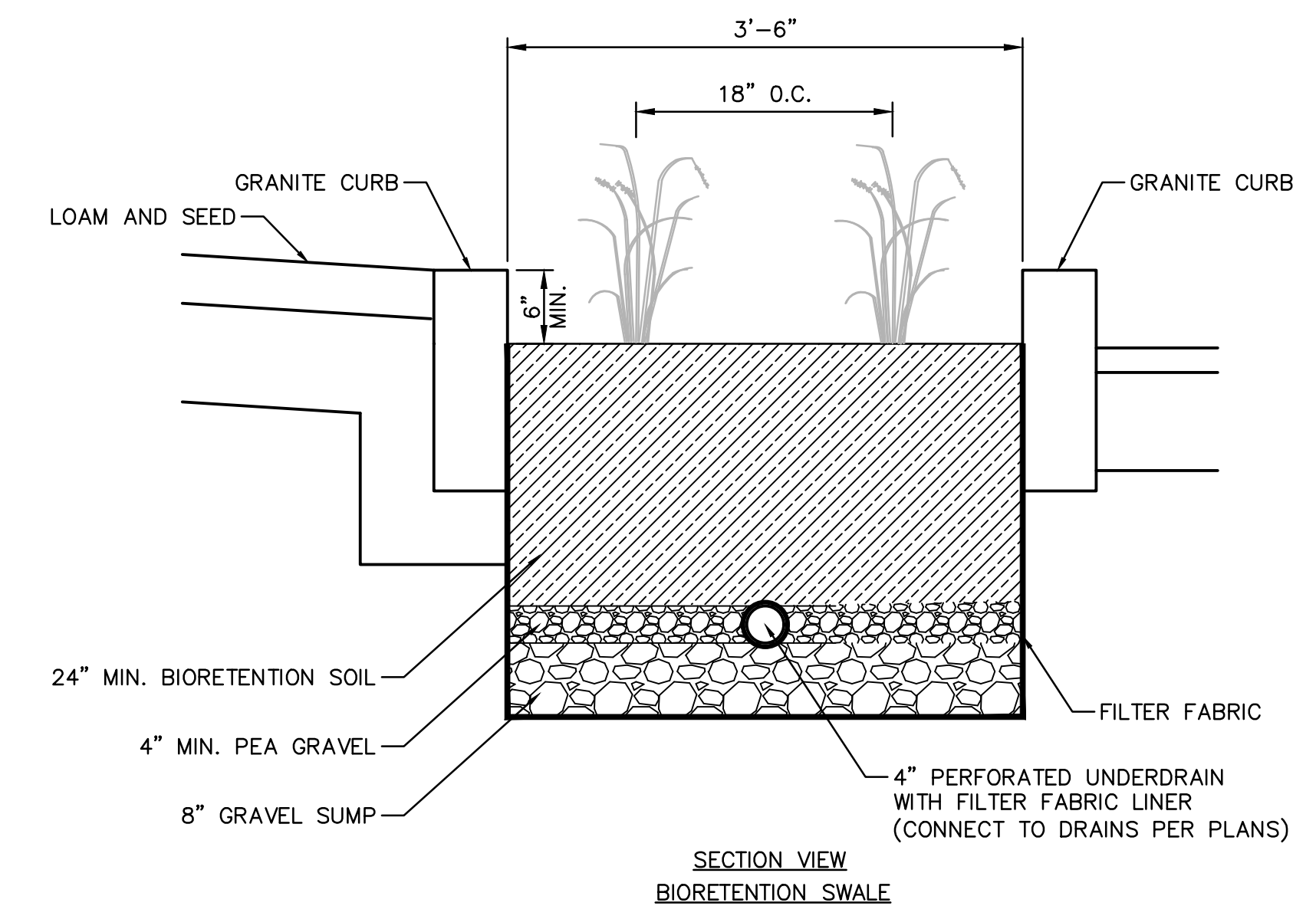
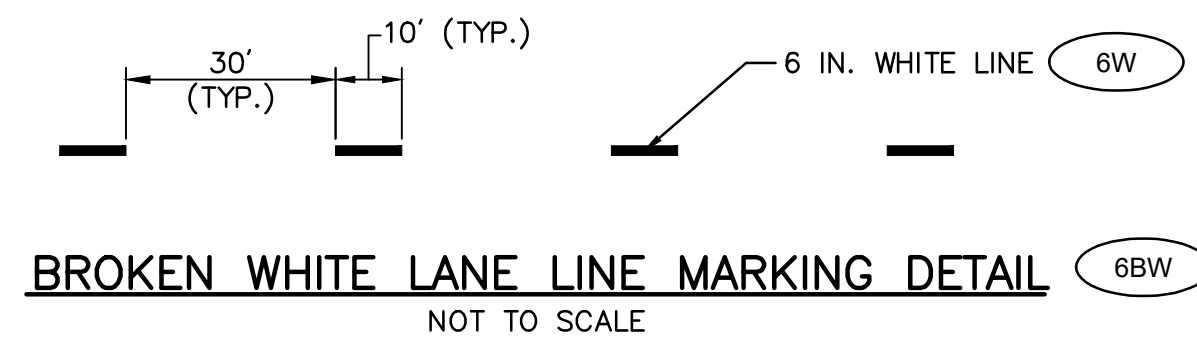
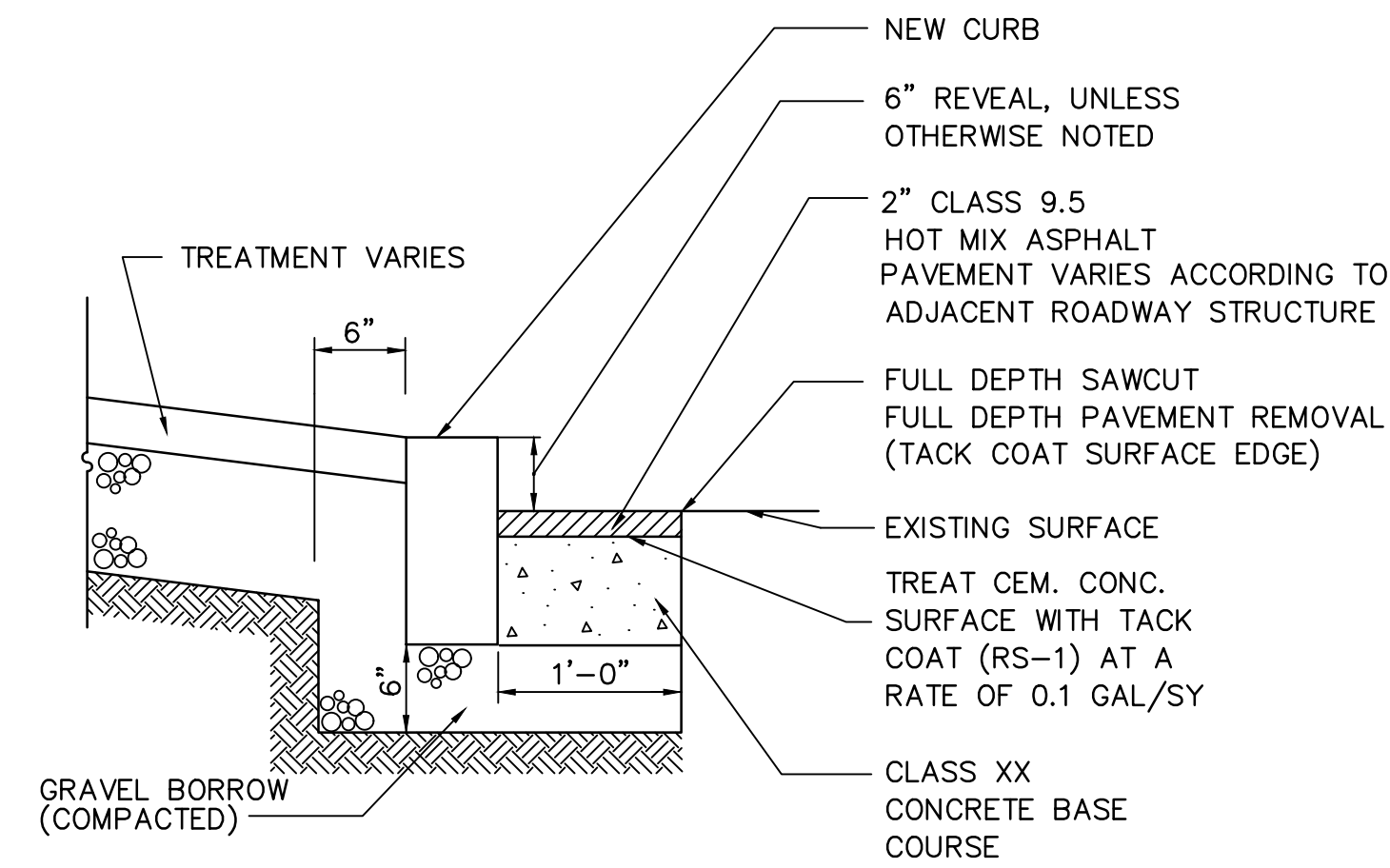
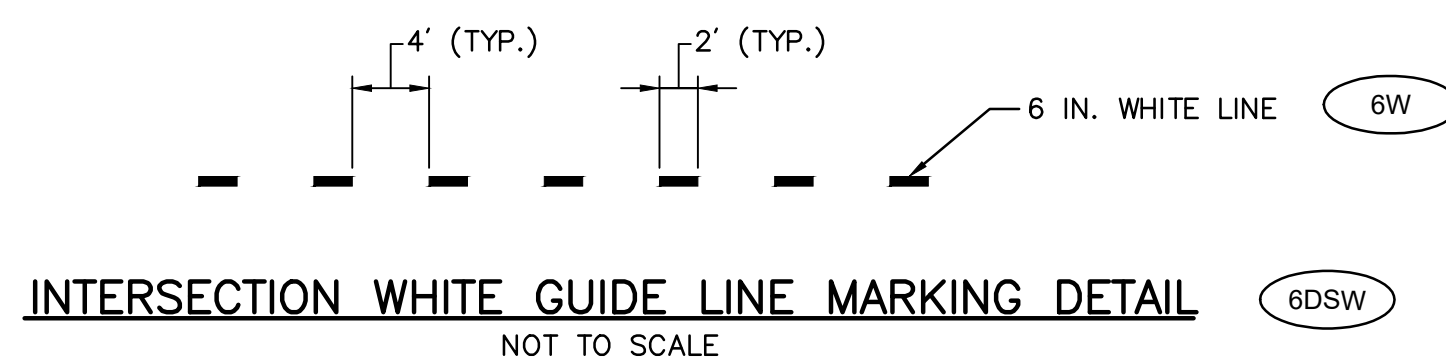
Distribution of Quantities

Project Name - STC Improvements 2020
 Estimate Name - Addendum No. 1
 R.I. Contract No. - 2020-CT-034
 FAP Nos: STPG-8888(244)

Item No.	Item Code	Description	UM	Qty.	Pay Code	Seq. No.
091	T20.4520	Cont.		5.00		
				Item T20.4520 Total:		
092	410.1000	TEMPORARY PATCHING	TON			
		MATERIAL/TRENCHES				
		PROJECT WIDE				
		PROJECT WIDE		5.00	0021	01
				Item 410.1000 Total:		
				5.00		

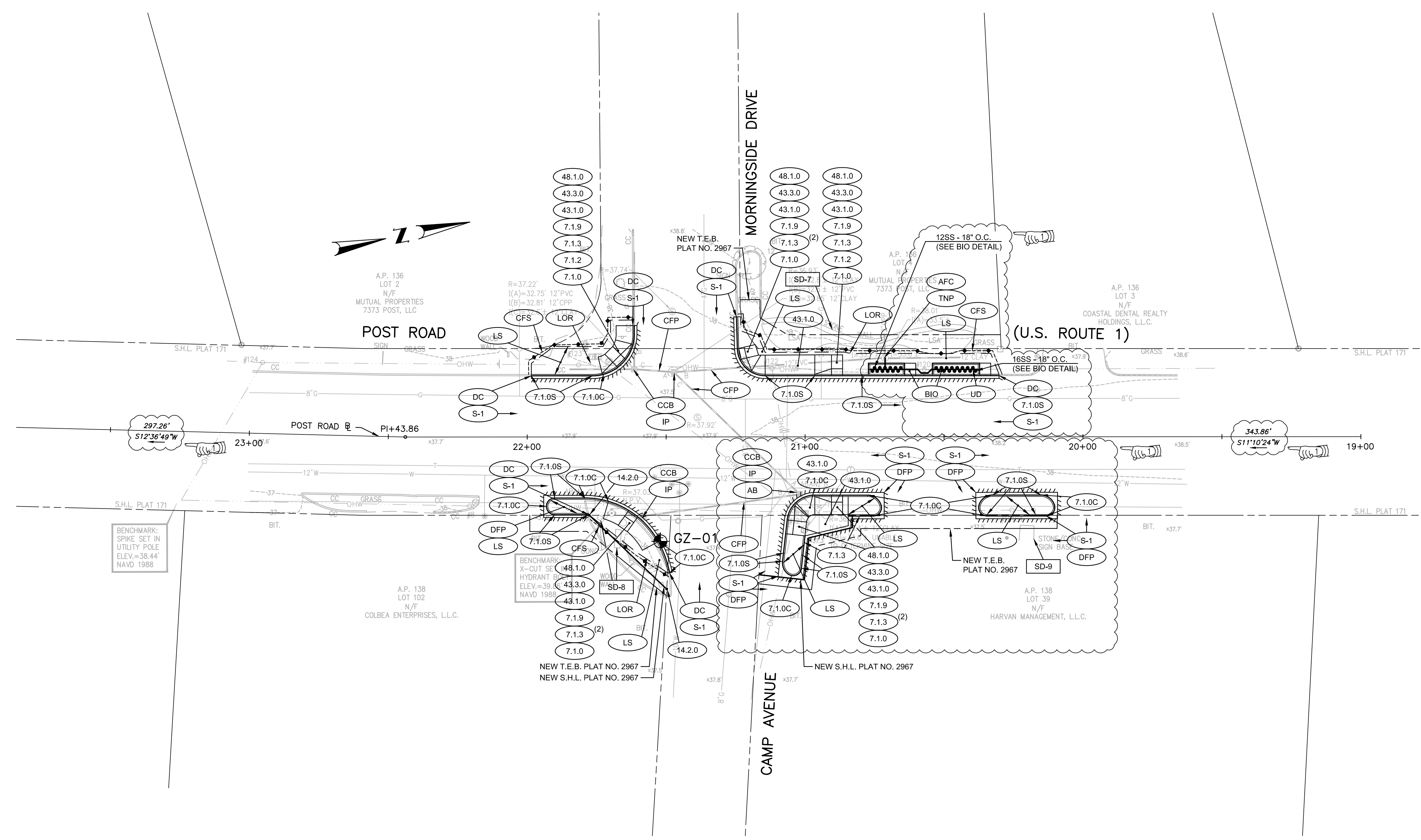


PLANTING SCHEDULE					
QUANTITY	KEY	BOTANICAL NAME	COMMON NAME	SIZE	SPACING
SHRUBS					
28	SS	SCHIZACHYRIUM SCOPARIUM	LITTLE BLUESTEM	1'-2' HT.	18' O.C. AS SHOWN



ADDENDUM NO. 1

FED. ROAD DIST. NO.	STATE	FEDERAL AID PROJECT NO.	FISCAL YEAR	SHEET NO.	TOTAL SHEETS
	RI		2020	12	26



BORING LEGEND

GZ-01 INDICATES TEST BORING PERFORMED BY NEW ENGLAND BORING CONTRACTORS ON MAY 18, 2020 AND OBSERVED BY GZA GEOENVIRONMENTAL, INC. PERSONNEL.

ADDENDUM NO. 1



RHODE ISLAND
DEPARTMENT OF TRANSPORTATION

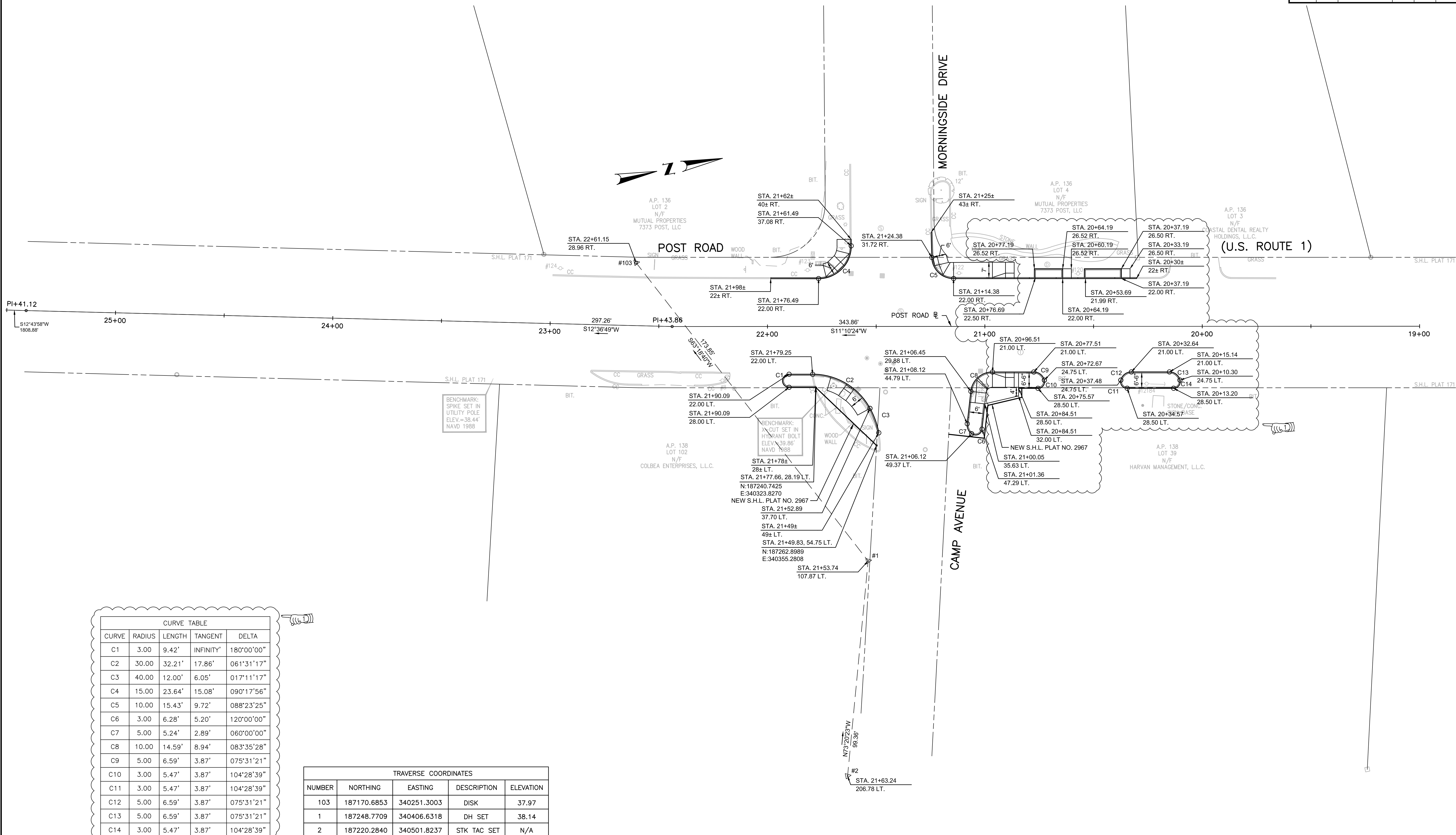
DESIGNED BY:
CHECKED BY:
DATE:
SHEET:
OF:

SCALE: 20' = 1" (SCALE IN FEET)

REVISIONS			REVISIONS		
NO.	DATE	BY	NO.	DATE	BY
1	7/30/20	VHB			

STC IMPROVEMENTS 2020
STATEWIDE
GENERAL PLAN NO. 1B
POST ROAD AT CAMP AVENUE, NORTH KINGSTOWN

FED. ROAD DW. NO.	STATE	FEDERAL AID PROJECT NO.	FISCAL YEAR	SHEET NO.	TOTAL SHEETS
	RI		2020	13	26



CURVE TABLE

CURVE	RADIUS	LENGTH	TANGENT	DELTA
C1	3.00	9.42'	INFINITY'	180°00'00"
C2	30.00	32.21'	17.86'	061°31'17"
C3	40.00	12.00'	6.05'	017°11'17"
C4	15.00	23.64'	15.08'	090°17'56"
C5	10.00	15.43'	9.72'	088°23'25"
C6	3.00	6.28'	5.20'	120°00'00"
C7	5.00	5.24'	2.89'	060°00'00"
C8	10.00	14.59'	8.94'	083°35'28"
C9	5.00	6.59'	3.87'	075°31'21"
C10	3.00	5.47'	3.87'	104°28'39"
C11	3.00	5.47'	3.87'	104°28'39"
C12	5.00	6.59'	3.87'	075°31'21"
C13	5.00	6.59'	3.87'	075°31'21"
C14	3.00	5.47'	3.87'	104°28'39"

TRAVERSE COORDINATES

NUMBER	NORTHING	EASTING	DESCRIPTION	ELEVATION
103	187170.6853	340251.3003	DISK	37.97
1	187248.7709	340406.6318	DH SET	38.14
2	187220.2840	340501.8237	STK TAC SET	N/A

ADDENDUM NO. 1



RHODE ISLAND
DEPARTMENT OF TRANSPORTATION

DESIGNED BY:
CHECKED BY:
DATE:
SHEET:
OF:

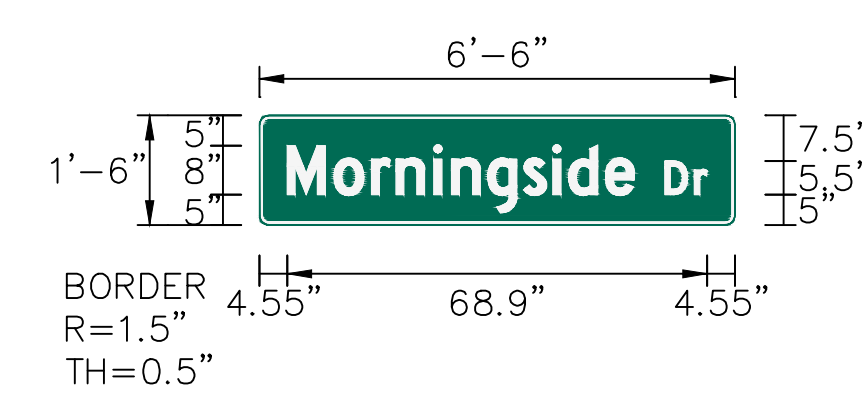
SCALE:
20 0 20 40
SCALE IN FEET

REVISIONS		REVISIONS			
NO.	DATE	BY	NO.	DATE	BY
1	7/30/20	VHB			

STC IMPROVEMENTS 2020
STATEWIDE
LOCATION PLAN NO. 1B
POST ROAD AT CAMP AVENUE, NORTH KINGSTOWN

FED. ROAD DW. NO.	STATE	FEDERAL AID PROJECT NO.	FISCAL YEAR	SHEET NO.	TOTAL SHEETS
RI			2020	14	26

SIGN NUMBER	D3-1
WIDTH x HGHT.	6'-6" x 1'-6"
BORDER WIDTH	0.5"
CORNER RADIUS	1.5"
MOUNTING	Overhead
BACKGROUND	TYPE: Reflective COLOR: Green
LEGEND/BORDER	TYPE: Reflective COLOR: White/White

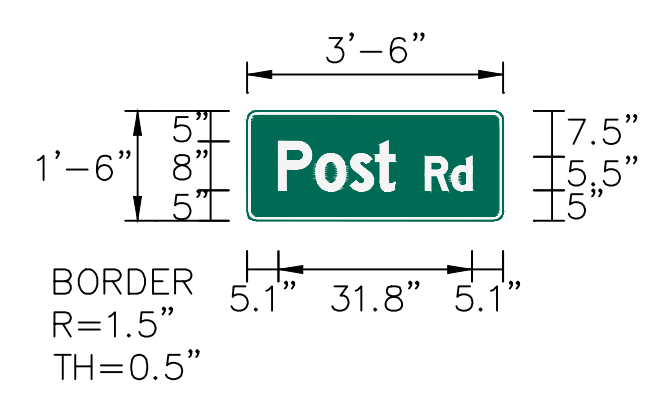
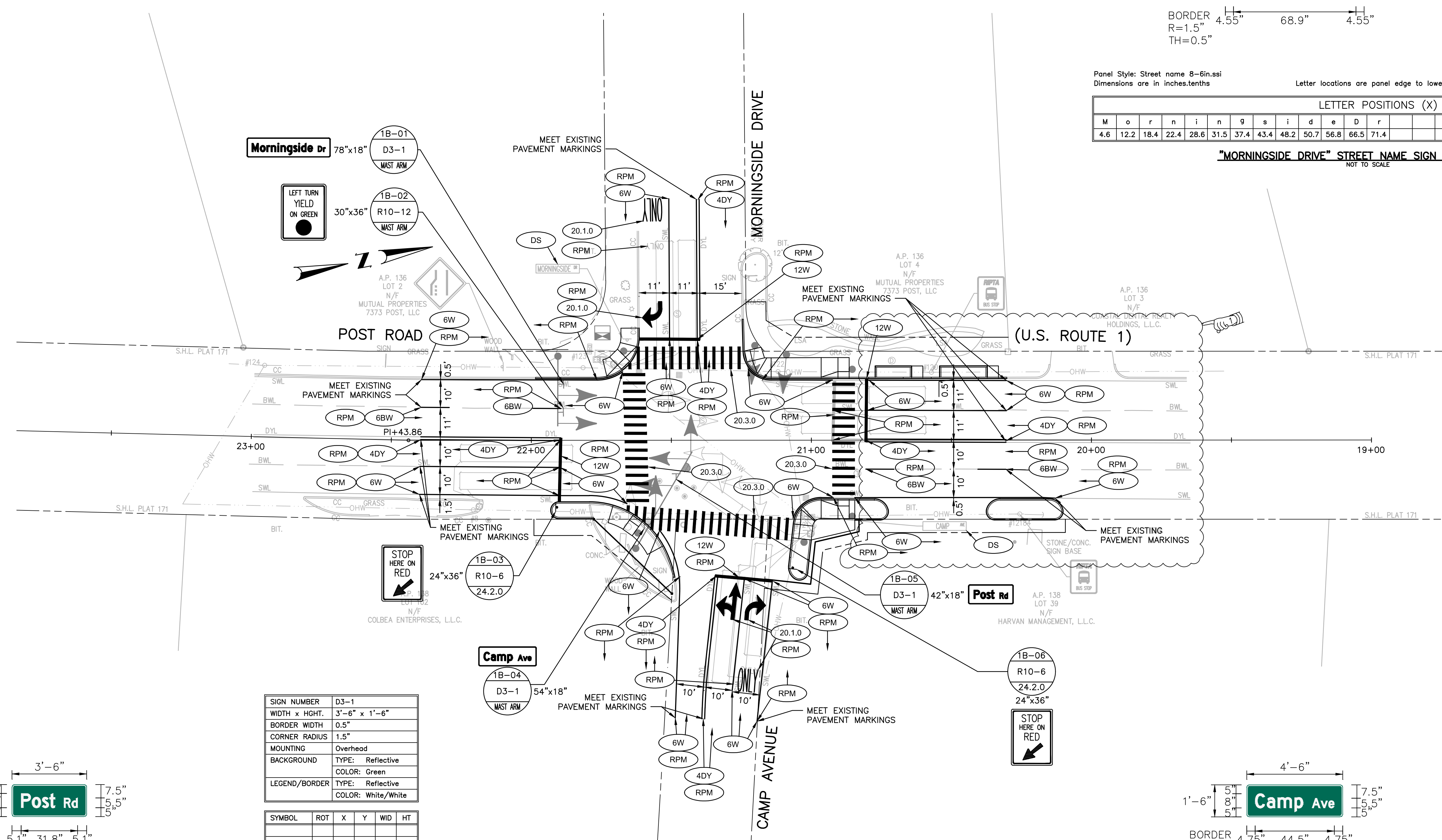


Panel Style: Street name 8-6in.ssi
Dimensions are in inches,tenths

Letter locations are panel edge to lower left corner

LETTER POSITIONS (X)													LENGTH	SERIES/SIZE	
M	o	r	n	i	n	g	s	i	d	e	D	r			D 2000
4.6	12.2	18.4	22.4	28.6	31.5	37.4	43.4	48.2	50.7	56.8	66.5	71.4			8/6, 5.5/4.1

"MORNINGSIDE DRIVE" STREET NAME SIGN DETAIL (D3-1)
NOT TO SCALE

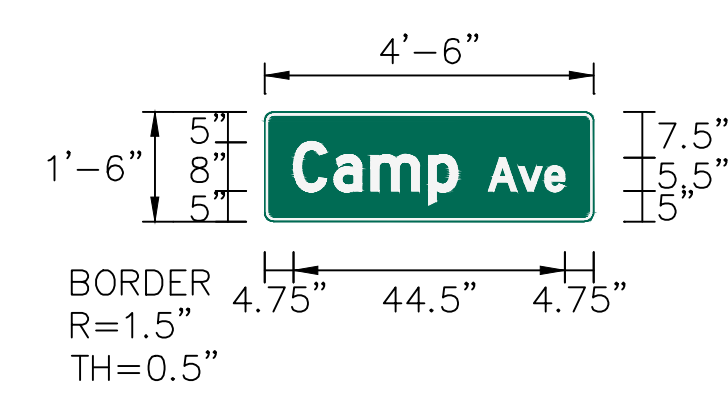


Panel Style: Street name 8-6in.ssi
Dimensions are in inches,tenths

Letter locations are panel edge to lower left corner

LETTER POSITIONS (X)													LENGTH	SERIES/SIZE	
P	o	s	t	R	d										D 2000
5.1	11.3	17	21	29.2	33.6										8/6, 5.5/4.1

ADDENDUM NO. 1 "POST ROAD" STREET NAME SIGN DETAIL (D3-1)
NOT TO SCALE



Panel Style: Street name 8-6in.ssi
Dimensions are in inches,tenths

Letter locations are panel edge to lower left corner

LETTER POSITIONS (X)													LENGTH	SERIES/SIZE	
C	a	m	p	A	v	e									D 2000
4.8	11.4	17.5	26.9	36.7	41.7	46									8/6, 5.5/4.1

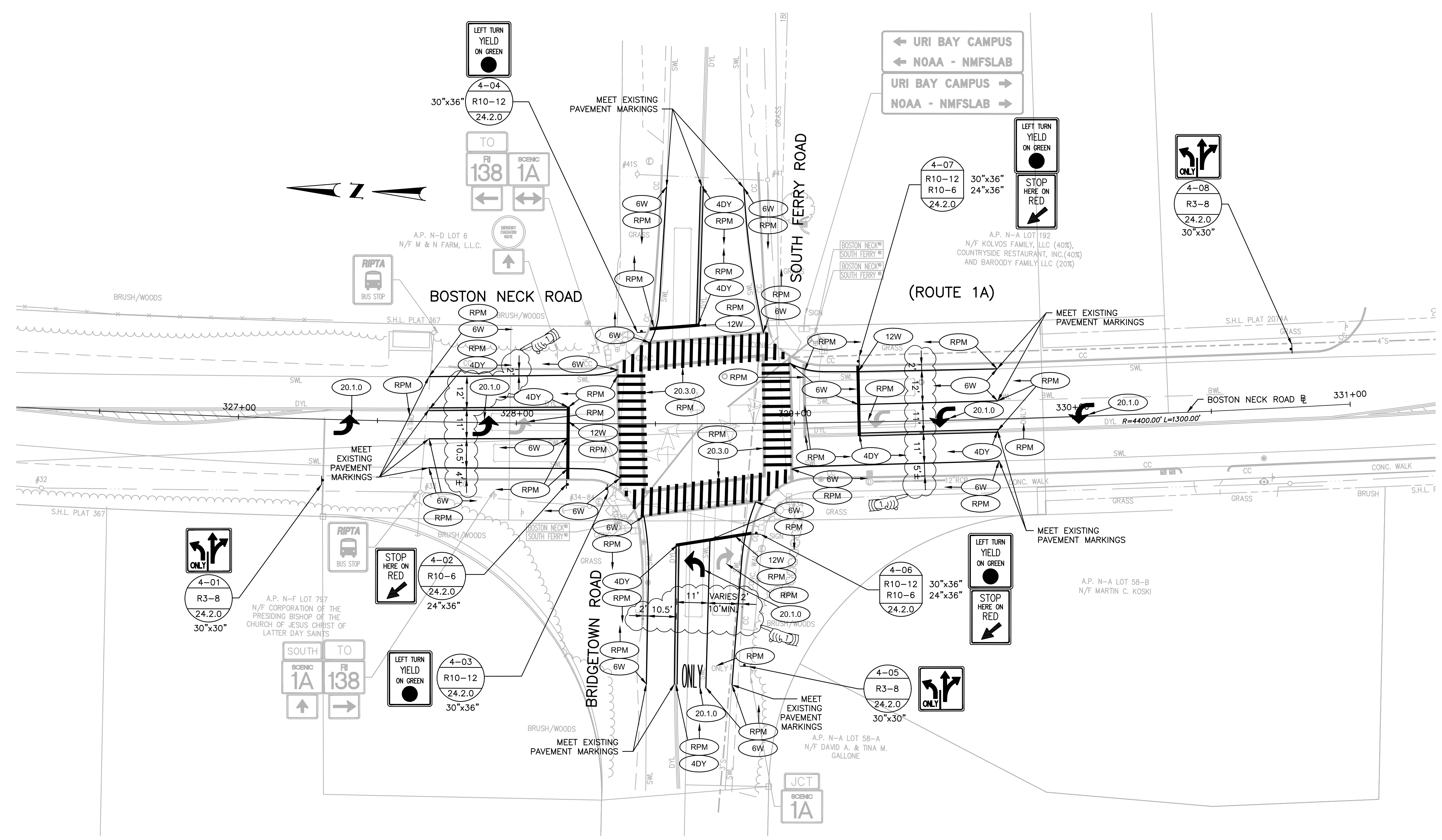
"CAMP AVENUE" STREET NAME SIGN DETAIL (D3-1)
NOT TO SCALE



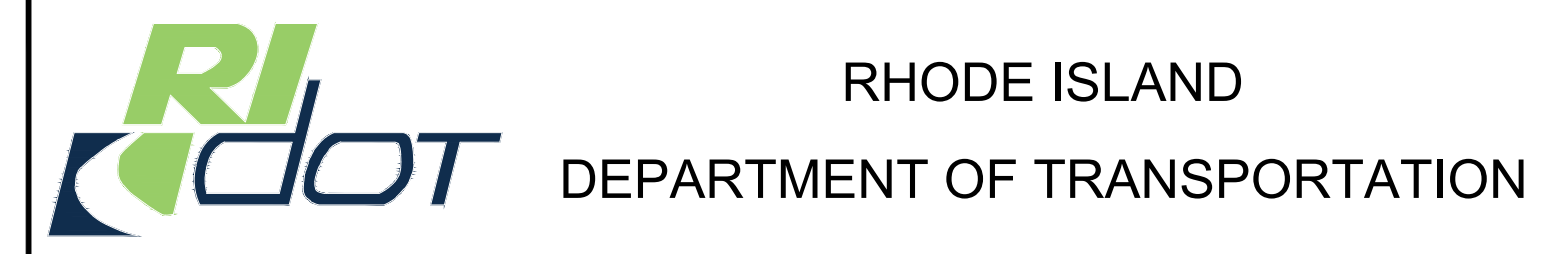
DESIGNED BY:	SCALE:
CHECKED BY:	20 0 20 40
DATE:	SCALE IN FEET
SHEET:	REVISIONS
OF:	NO. DATE BY
	1 7/30/20 VHB

STC IMPROVEMENTS 2020
RHODE ISLAND
SIGNING & STRIPING PLAN NO. 1B
POST ROAD AT CAMP AVENUE, NORTH KINGSTOWN

FED. ROAD DW. NO.	STATE	FEDERAL AID PROJECT NO.	FISCAL YEAR	SHEET NO.	TOTAL SHEETS
	RI		2020	19	26



ADDENDUM NO. 1



DESIGNED BY:
CHECKED BY:
DATE:
SHEET:
OF:

SCALE: 20 0 20 40
SCALE IN FEET

REVISIONS			REVISIONS		
NO.	DATE	BY	NO.	DATE	BY
1	7/30/20	VHB			

STATEWIDE
STC IMPROVEMENTS 2020
RHODE ISLAND
GENERAL PLAN NO. 4
BOSTON NECK ROAD AT BRIDGETOWN ROAD, NARRAGANSETT

ITEM NO.	ITEM CODE	ITEM DESCRIPTION
11	945.0100	Remove and Dispose Traffic Signal Equipment
12	945.0200	Remove and Salvage Traffic Signal Equipment
(DHH)	201.0423	Remove and Dispose Handhole
(RDC)	201.0617	Remove and Dispose Conduit - All Sizes

R-1

FED. ROAD DIST. NO.	STATE	FEDERAL AID PROJECT NO.	FISCAL YEAR	SHEET NO.	TOTAL SHEETS
	RI		2020	21	26

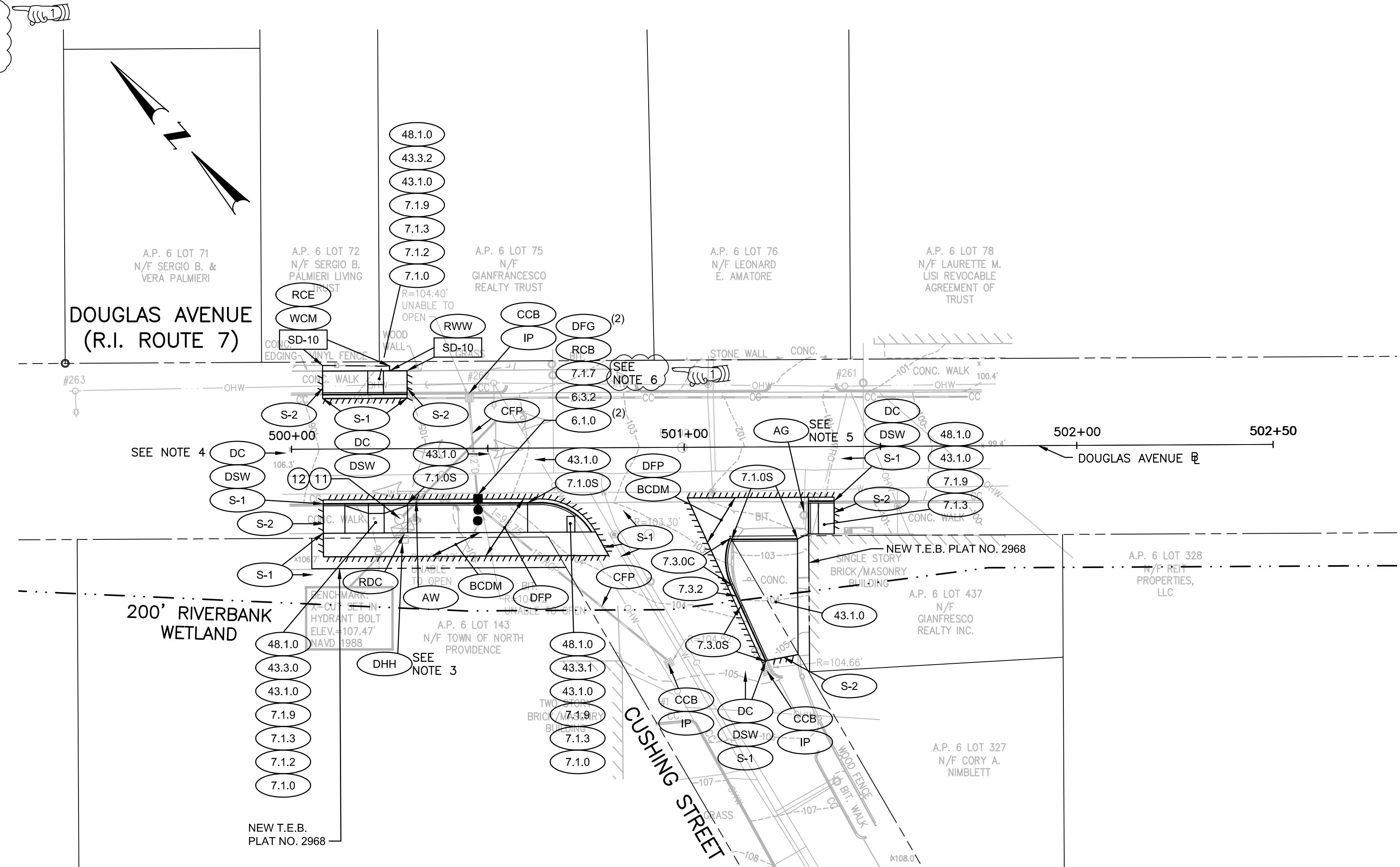
CONSTRUCTION NOTES:

- THE ITEM "REMOVE AND DISPOSE TRAFFIC SIGNAL EQUIPMENT" SHALL INCLUDE THE FOLLOWING MAJOR ITEMS:

MISCELLANEOUS TRAFFIC SIGNAL CABLE AND WIRING SHALL BE REMOVED AND LEGALLY DISPOSED OF IN ACCORDANCE WITH SECTION 945 OF THE STANDARD SPECIFICATIONS.
- THE ITEM "REMOVE AND SALVAGE TRAFFIC SIGNAL EQUIPMENT" SHALL INCLUDE THE FOLLOWING MAJOR ITEMS:

(1) LOCAL CONTROLLER, POLE MOUNTED CABINET AND ASSOCIATED EQUIPMENT, (1) MAST ARM AND FOUNDATION, (5) TRAFFIC SIGNAL HEADS SHALL BE REMOVED AND SALVAGED IN ACCORDANCE WITH SECTION 945 OF THE STANDARD SPECIFICATIONS.
- RIDOT TRAFFIC SIGNAL NO. 570 WILL BE DECOMMISSIONED AS PART OF THIS CONTRACT. THE EXISTING TRAFFIC SIGNAL CONDUIT WHICH CONNECTS TO #1264 DOUGLAS AVENUE SHALL BE CUT, CAPPED AND ABANDONED IN PLACE.
- THE CONTRACTOR SHALL AVOID ENCROACHMENT OF THE 6" CAST IRON GAS MAIN IN THE ROADWAY. THE CONTRACTOR SHALL CONTACT CHRIS FERRANTI AT 401-465-9064 WHEN PERFORMING WORK IN THIS AREA.
- CONTRACTOR SHALL HAND DIG AT ALL GAS PIPELINE CROSSINGS.

6. PRIOR TO INSTALLATION OF DRAINAGE, CONTRACTOR SHALL PERFORM TEST PIT TO VERIFY ADEQUATE SEPARATION FROM WATER LINE. IF WATER LINE IS TOO SHALLOW TO INSTALL CATCH BASIN CHUTE, CONTRACTOR SHALL INSTALL A CURB INLET STONE ONLY AT THE EXISTING CATCH BASIN.



ADDENDUM NO. 1



DESIGNED BY:
CHECKED BY:
DATE:
SHEET:
OF:

SCALE: 20' = 1" (SCALE IN FEET)

REVISIONS			REVISIONS		
NO.	DATE	BY	NO.	DATE	BY
1	7/30/20	VHB			

STC IMPROVEMENTS 2020
STATEWIDE
RHODE ISLAND
GENERAL PLAN NO. 5
DOUGLAS AVENUE AT CUSHING STREET, NORTH PROVIDENCE