

July 15, 2020

STATE OF RHODE ISLAND AND PROVIDENCE PLANTATION
DEPARTMENT OF ADMINISTRATION

DIVISION OF PURCHASES BID NO. 7606808

RHODE ISLAND DEPARTMENT OF TRANSPORTATION

RHODE ISLAND CONTRACT NO.2019-CT-099

FEDERAL-AID PROJECT NO. FAP Nos: STPG-HSIP (084)

HSIP - Crosswalk & Sign Enhancements

Statewide

CITY/TOWN OF West Greenwich, Richmond, Exeter, Portsmouth, Cranston, Providence, Warwick

COUNTY OF KENT, WASHINGTON, NEWPORT, PROVIDENCE

NOTICE TO PROSPECTIVE BIDDERS

ADDENDUM NO. 1 Prospective bidders and all concerned are hereby notified of the following changes in the Plans, Specifications, Proposal and Distribution of Quantities for this contract. These changes shall be incorporated in the Plans, Specifications, Proposal and Distribution of Quantities, and shall become an integral part of the Contract Documents.

A. Drawings/Plans - Change/Addition

1. Drawings/Plans - Change/Addition

i. Sheet 8, Details

Delete Sheet No. 8 in its entirety and replace with Sheet No. 8 (R-1), attached to this Addendum No.1. The detail for Off-Center RRFB Sign Mounting was revised.

ii. Sheet 17, Traffic Signal Plan – Loc A-1

Delete Sheet No. 17 in its entirety and replace with Sheet No. 17 (R-1), attached to this Addendum No.1. The sheet was revised to show proposed pavement markings.

iii. Sheet 18, Traffic Signal Plan – Loc A-2

Delete Sheet No. 18 in its entirety and replace with Sheet No. 18 (R-1), attached to this Addendum No.1. The sheet was revised to show proposed pavement markings.

B. Distribution of Quantities

1. Distribution of Quantities

i. Assembly Summary

Delete the Assembly Summary in its entirety and replace with revised Assembly Summary Pages 1-7 (R-1), attached to this Addendum No.1. Assemblies CDTAC and CDTUP have been removed.

ii. Index Pages 1-3

Delete Index Pages 1-3 in their entirety and replace with revised Index Pages 1-3 (R-1) attached to this Addendum No. 1. The index has been revised.

iii. Page 7

Delete Page 7 in its entirety and replace with revised Page 7 (R-1) attached to this Addendum No. 1. Item No. 201.0610 has been revised.

iv. Page 18

Delete Page 18 in its entirety and replace with revised Page 18 (R-1) attached to this Addendum No. 1. Item 212.2100 has been removed from the contract.

v. Page 38

Delete Page 38 in its entirety and replace with revised Page 38 (R-1) attached to this Addendum No. 1. Item No. L08.0109 has been revised and Item No. T04.5001 has been removed from the contract.

vi. Page 38a

Insert Page 38a attached to this Addendum No. 1. New page added for pagination.

vii. Pages 39-42

Delete Pages 39-42 in its entirety and replace with revised Pages 39-42 (R-1) attached to this Addendum No. 1. Item No. T11.9901 has been revised and Item Nos. T04.5001, T04.5305, T06.1020, T06.2020 and T06.5430 have been removed from the contract.

viii. Page 42a

Insert Page 42a attached to this Addendum No. 1. New page added for pagination.

ix. Page 43

Delete Page 43 in its entirety and replace with revised Page 43 (R-1) attached to this Addendum No. 1. Item No. T15.0100 has been revised.

x. Page 43a

Insert Page 43a attached to this Addendum No. 1. New page added for pagination.

xi. Page 44

Delete Page 44 in its entirety and replace with revised Page 44 (R-1) attached to this Addendum No. 1. Item No. T15.0200 has been revised.

xii. Page 44a

Insert Page 44a attached to this Addendum No. 1. New page added for pagination.

xiii. Page 49

Delete Page 49 in its entirety and replace with revised Page 49 (R-1) attached to this Addendum No. 1. Item No. T20.2412 has been revised.

xiv. Page 49a

Insert Page 49a attached to this Addendum No. 1. New page added for pagination.

xv. Page 50

Delete Page 50 in its entirety and replace with revised Page 50 (R-1) attached to this Addendum No. 1. Item Nos. T20.2412, T20.2804 and T20.2812 have been revised.

xvi. Page 50a

Insert Page 50a attached to this Addendum No. 1. New page added for pagination.

xvii. Page 52

Delete Page 52 in its entirety and replace with revised Page 52 (R-1) attached to this Addendum No. 1. Item Nos. T20.4506 and T20.4508 have been revised.

xviii. Page 52a

Insert Page 52a attached to this Addendum No. 1. New page added for pagination.

xix. Page 53

Delete Page 53 in its entirety and replace with revised Page 53 (R-1) attached to this Addendum No. 1. Item No. T20.4508 has been revised.

xx. Page 53a

Insert Page 53a attached to this Addendum No. 1. New page added for pagination.

xxi. Page 54

Delete Page 54 in its entirety and replace with revised Page 54 (R-1) attached to this Addendum No. 1. Item No. 922.0100 has been revised.

C. Contract Documents

1. Bid-Opening

i. Bid Opening Addendum – COVID-19 Emergency Protocol for Bid Openings has been included in the contract.

2. Specification - Job Specific

i. JS-41

Delete Page JS-41 in its entirety and replace with JS-41 (R-1). Job specific spec for Item 938.1000 has been revised.

ii. JS-49

Delete Page JS-49 in its entirety and replace with JS-49 (R-1). Job specific spec for Items T15.9901 and T15.9902 has been revised.

iii. JS-53

Delete Page JS-53 in its entirety and replace with JS-53 (R-1). Job specific spec for Items T16.9902 and T16.9903 has been revised.

iv. JS-66

Delete Page JS-66 in its entirety and replace with JS-66 (R-1). Job specific spec for Items T16.9902 and T16.9903 has been revised.

D. Proposal Addition/Deletion

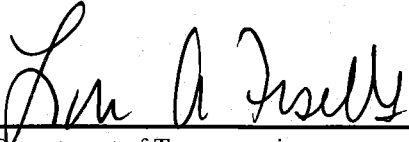
1. Proposal

Delete PS&E Proposal in its entirety and replace with Addendum 1 Proposal attached to this Addendum.

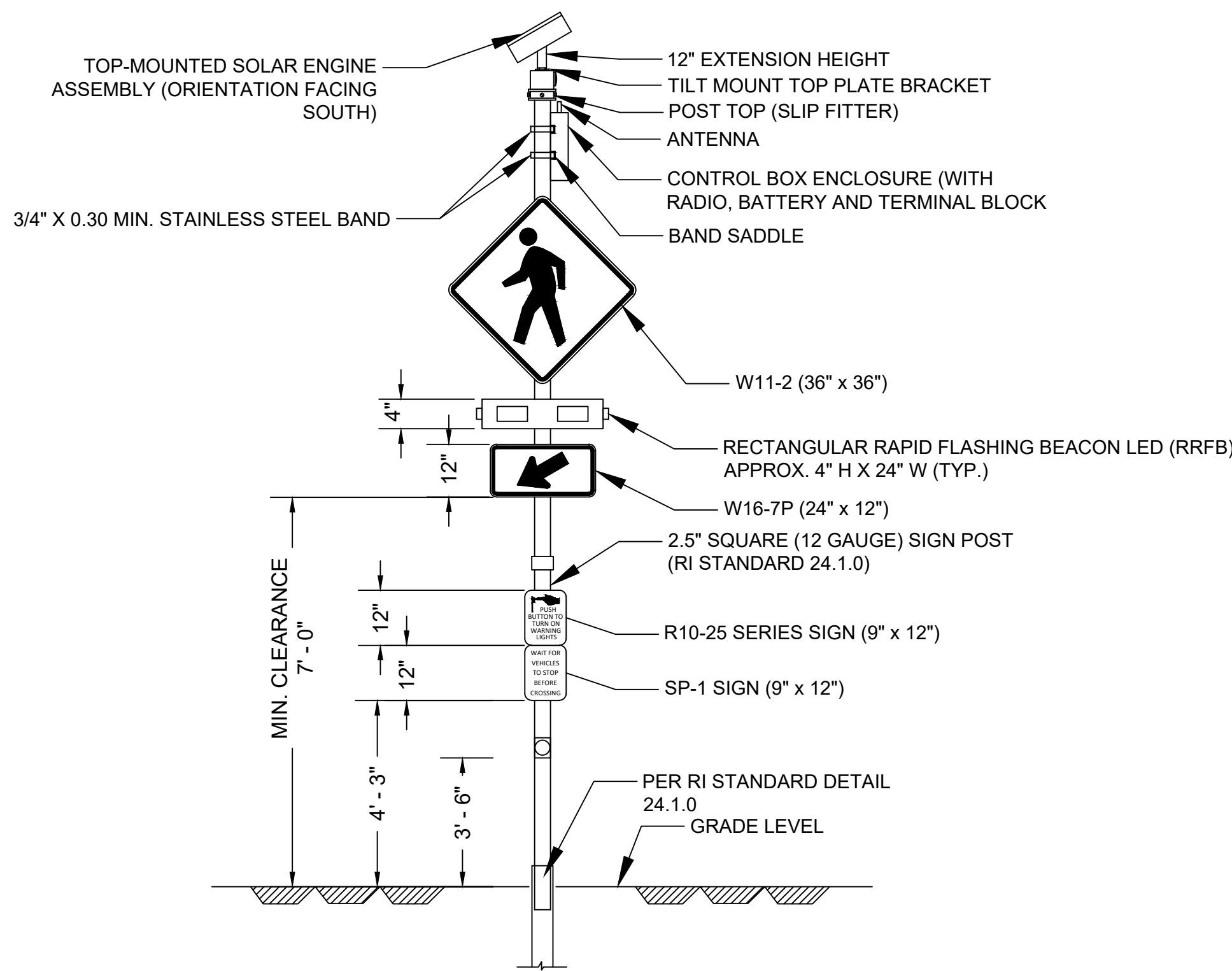
Minimum Acceptable Bid Price of \$75.00 for Item 928.9901 has been added to the contract.

Minimum Acceptable Bid Price of \$100,000.00 for Item 937.0200 has been added to the contract.

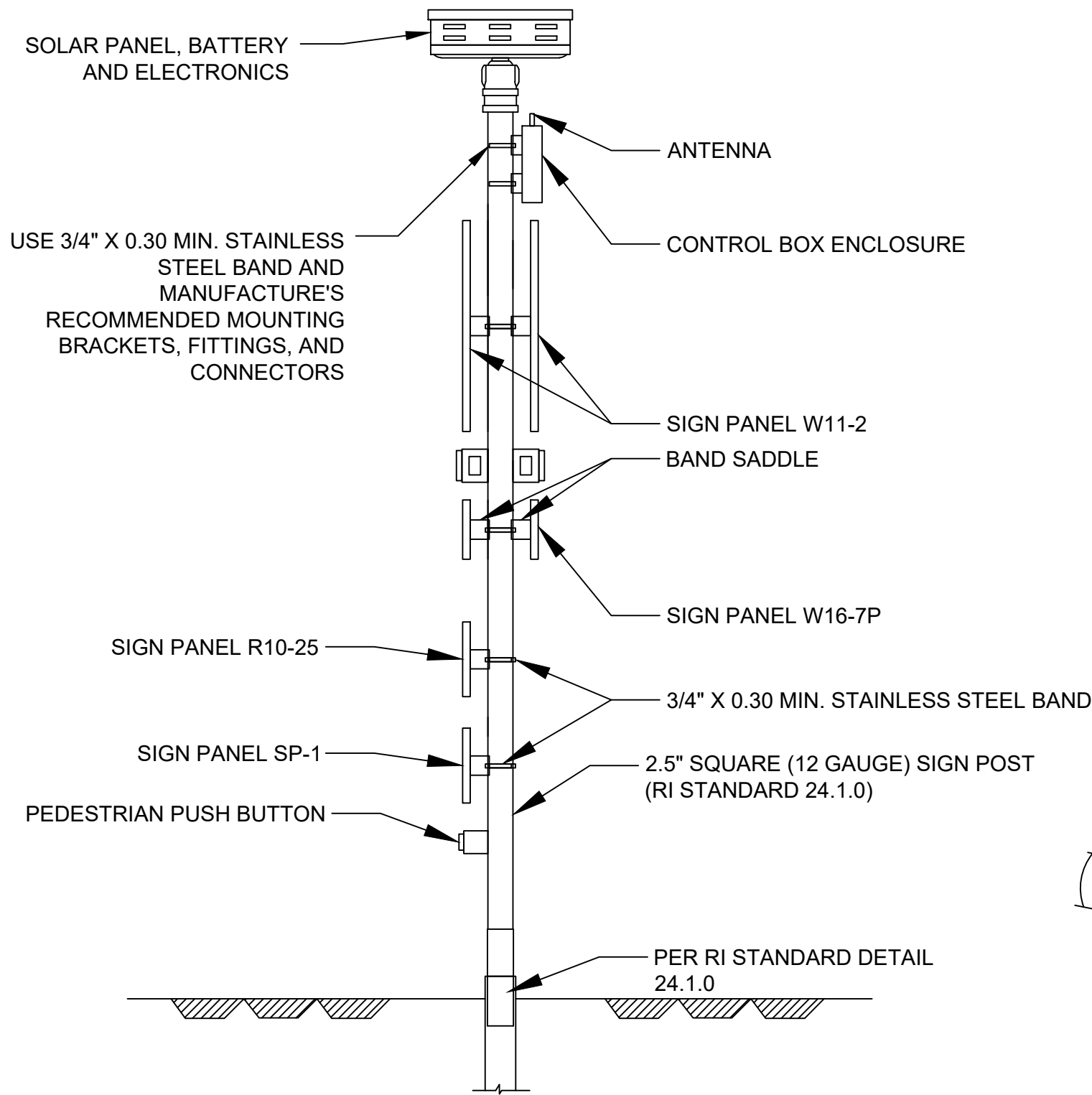
Minimum Acceptable Bid Price of \$6.00 for Item 943.0200 has been added to the contract.



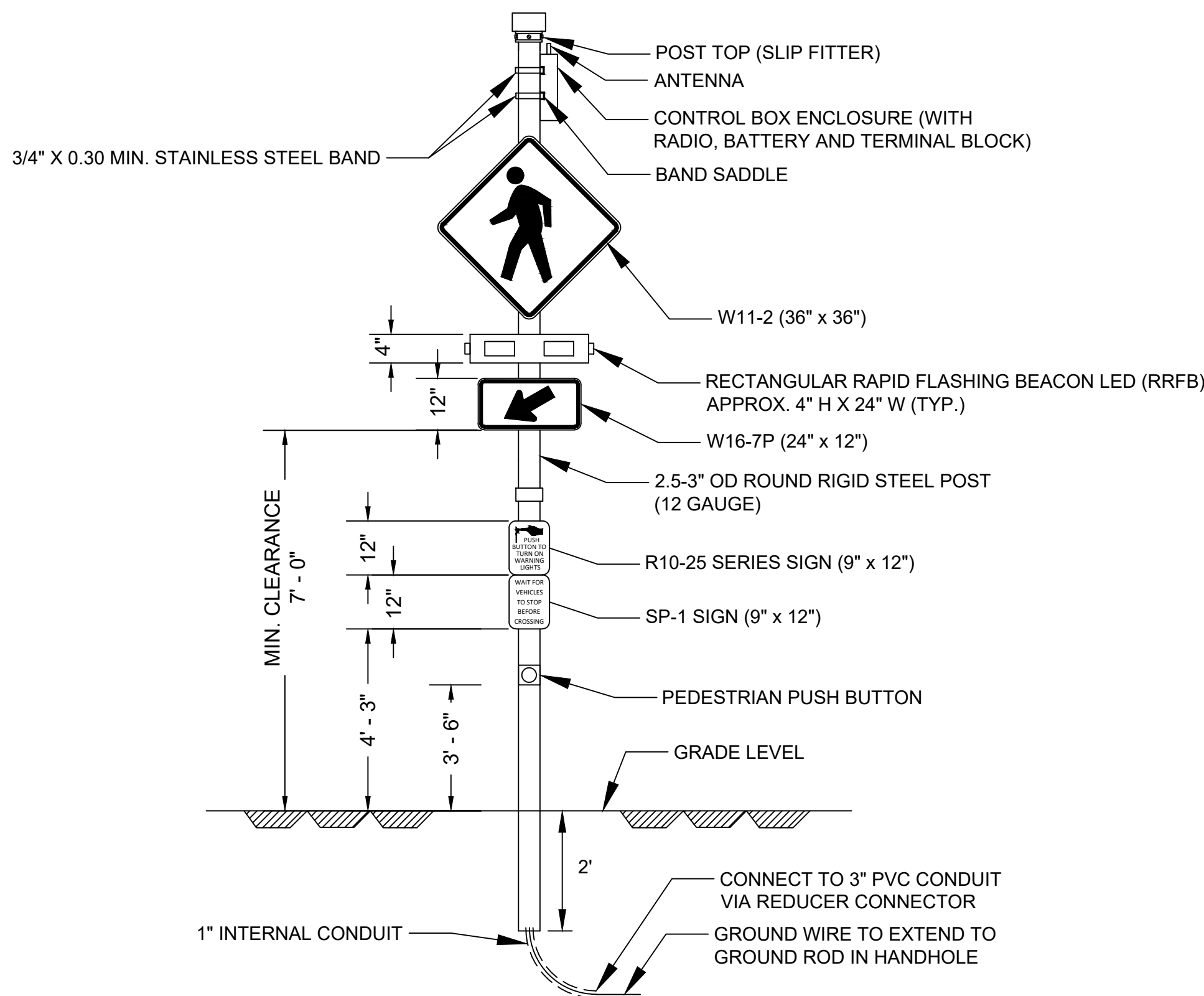
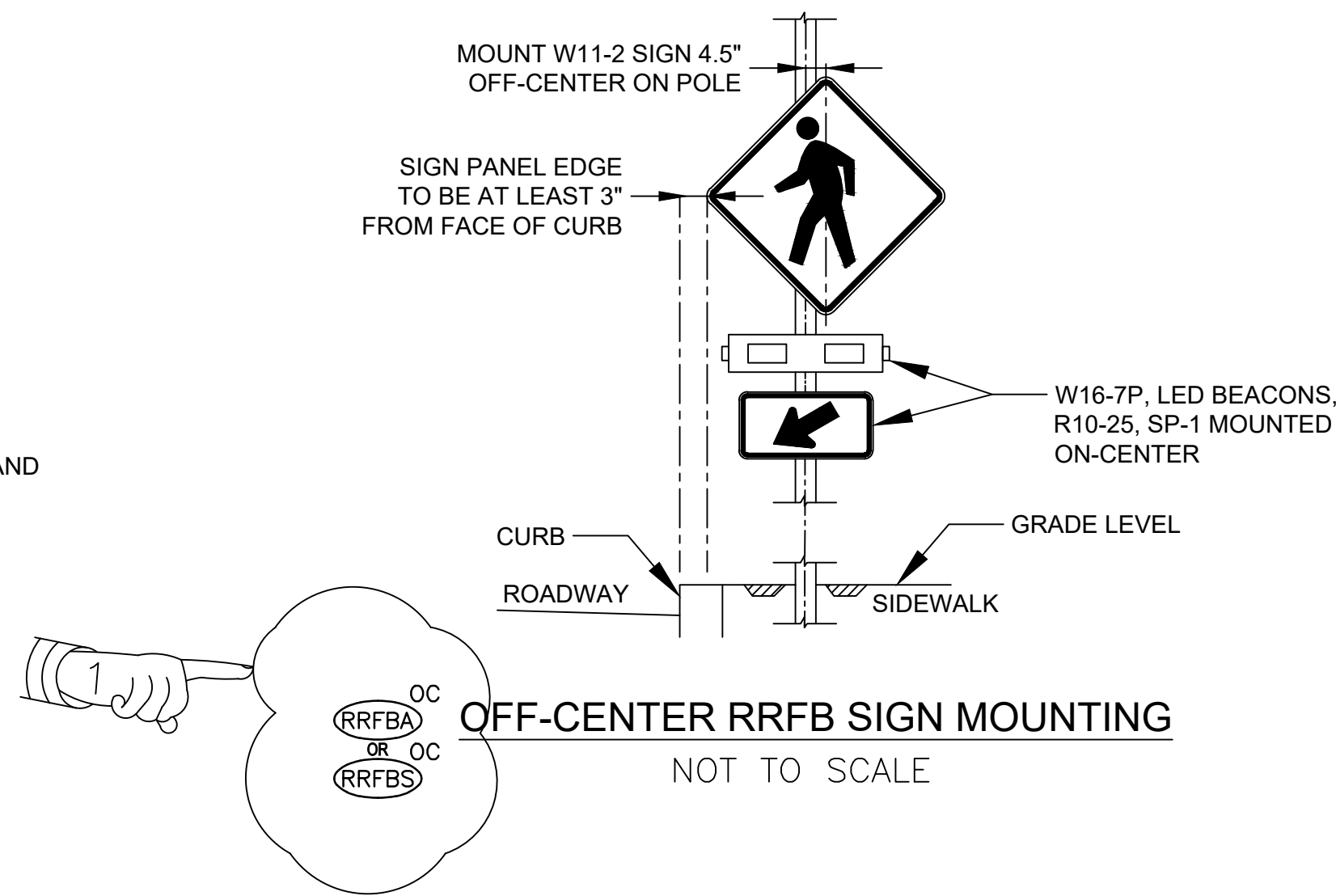
RI Department of Transportation
Administrator, Division of Project Management



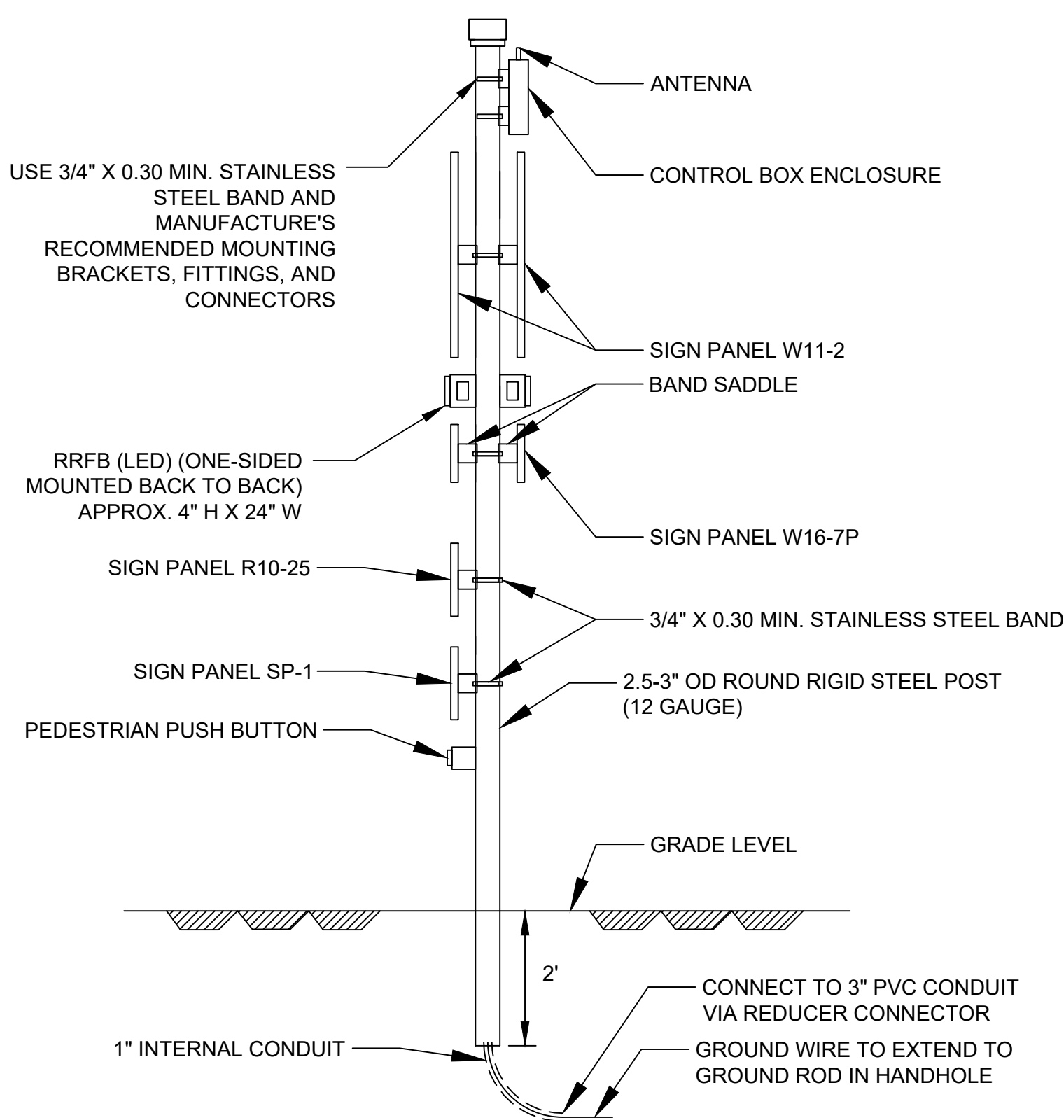
RRFBS SOLAR POWERED RAPID RECTANGULAR FLASHING BEACON (RRFB) - FRONT VIEW
NOT TO SCALE



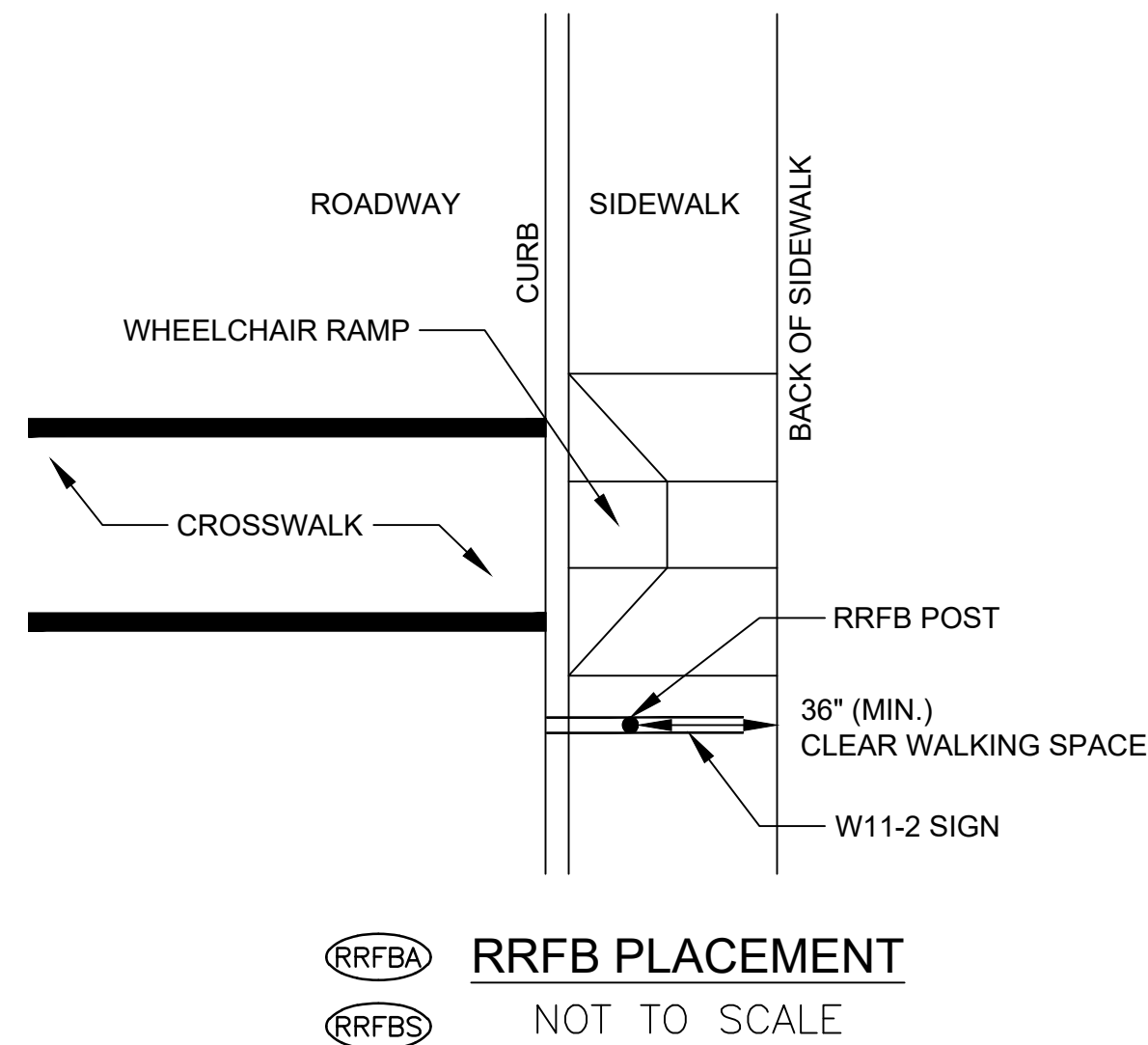
RRFBS SOLAR POWERED RAPID RECTANGULAR FLASHING BEACON (RRFB) - SIDE VIEW
NOT TO SCALE



RRFBA AC-POWERED RAPID RECTANGULAR FLASHING BEACON (RRFB) - FRONT VIEW
NOT TO SCALE



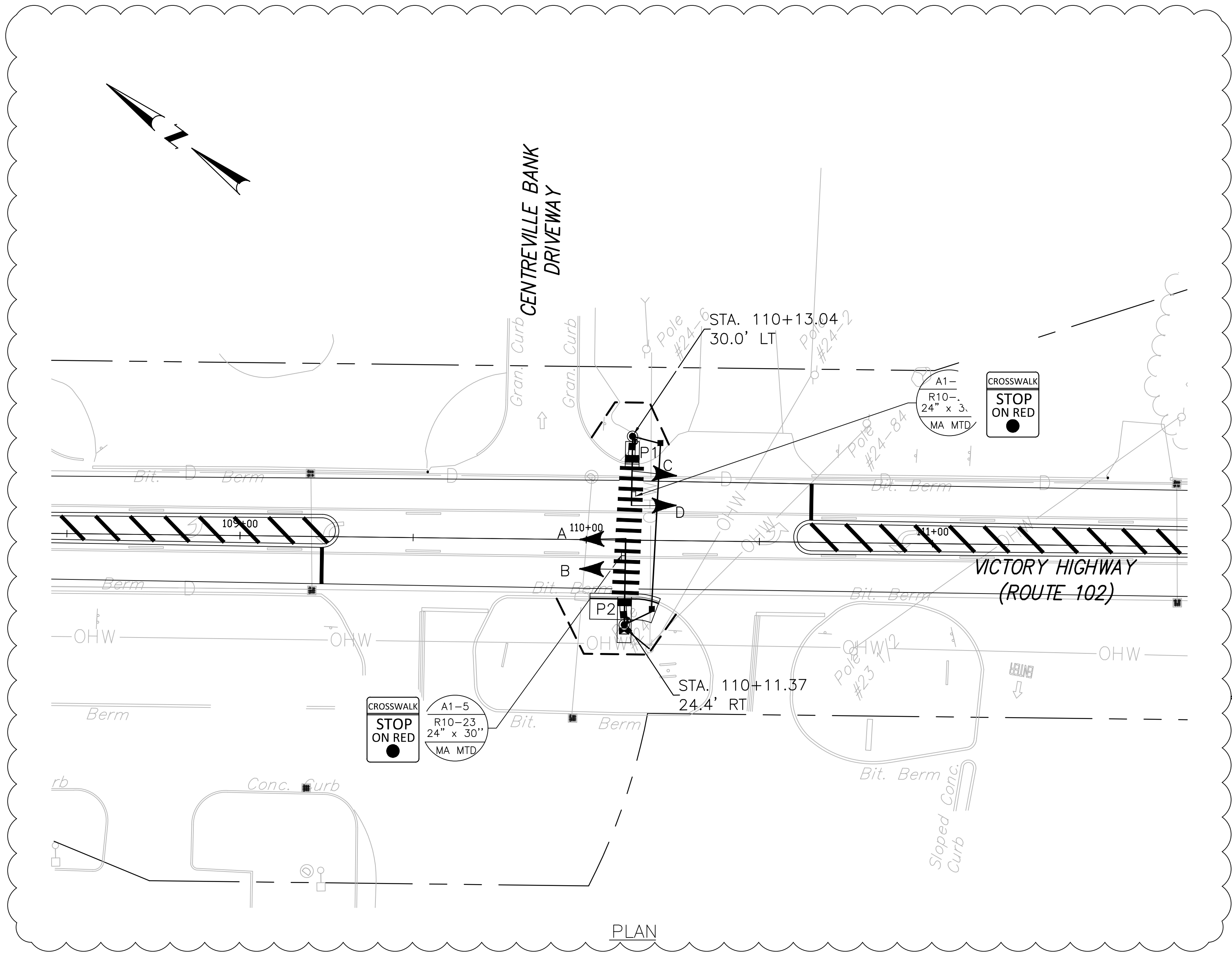
RRFBA AC-POWERED RAPID RECTANGULAR FLASHING BEACON (RRFB) - SIDE VIEW
NOT TO SCALE



RRFBA RRFB PLACEMENT
NOT TO SCALE

NOTE: REFER ALSO TO THE MANUAL ON UNIFORM TRAFFIC CONTROL DEVICES (MUTCD) FIGURE 4E-3.

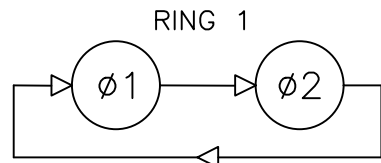
Addendum No. 1



PROPOSED PHASE AND TIMING DIAGRAM										
APPROACH	DIRECTION	HOUSING	Ø1		Ø2				FLASHING OPERATION	
MINIMUM INTERVAL			1							
VEHICLE EXTENSION										
MAXIMUM			1							
YELLOW CHANGE					3	5				
RED CLEARANCE						2				
PEDESTRIAN WALK							7			
PEDESTRIAN CHANGE								6	3	
VICTORY HWY. (RT. 102)	SEB	A,B	DARK		FY	SY	SR	SR	AFR	AFR
VICTORY HWY. (RT. 102)	NWB	C,D	DARK		FY	SY	SR	SR	AFR	AFR
PED. CROSSING VICTORY HWY.	NE-SW	P1,P2	DW		DW	DW	DW	W	FDW	DW

DETECTOR	NON-LOCK	NON-LOCK
RECALL	MAX	OFF
NOTES:	Ø1	Ø2
1. PEDESTRIAN W/FDW AND HYBRID BEACONS UPON PUSH BUTTON ACTUATION ONLY.	→ ←	↑ ↓
2. PEDESTRIAN HYBRID BEACONS REMAIN DARK UNTIL ACTIVATED.		
3. FLASHING OPERATION PER MUTCD.		

- LEGEND
- FY FLASHING YELLOW
 - SY STEADY YELLOW
 - SR STEADY RED
 - AFR ALTERNATING FLASHING RED



SIGNAL FACE DETAILS	
A,B,C,D	P1, P2
PROPOSED	PROPOSED
PEDESTRIAN HYBRID BEACON	

- NOTES:
- ALL SIGNAL INDICATIONS SHALL BE 12" X 12".
 - ALL RED AND YELLOW SIGNAL DISPLAYS SHALL BE EQUIPPED WITH LED MODULES.
 - A BACKPLATE WITH A DULL BLACK FINISH EXTEND 5" BEYOND THE EDGE OF ALL VEHICULAR SIGNAL HEADS.
 - A 3" WIDE YELLOW RETROREFLECTIVE STRIP SHALL BE PLACED ALONG THE PERIMETER OF EACH BACKPLATE FACE.
 - FOR COUNTDOWN PEDESTRIAN SIGNAL DISPLAYS, HAND/PERSON SYMBOL SHALL BE LED TYPE FILLED.

REFER TO SHEET NO. 9 FOR GENERAL PLAN.

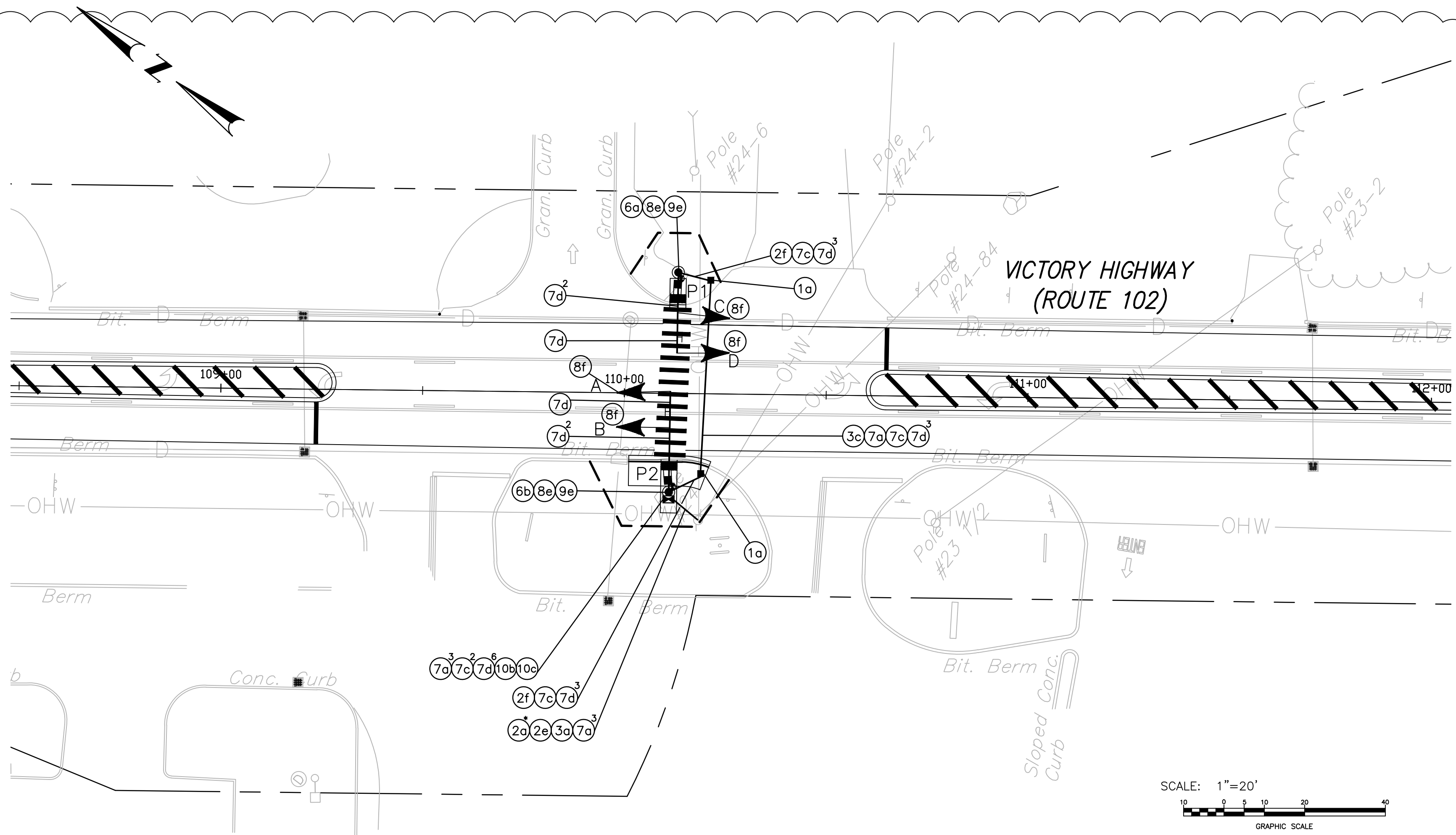
- NOTES:
- CONTRACTOR SHALL BE RESPONSIBLE FOR VERIFYING LOCATION AND CONDITION OF UTILITIES AND TRAFFIC SIGNAL EQUIPMENT SHOWN OR NOT SHOWN ON THIS PLAN.
 - WHERE MAST ARM POLE FOUNDATIONS ARE PROPOSED WITHIN THE LIMITS OF WHEELCHAIR RAMPS, THE TOP OF FOUNDATION GRADE SHALL BE SET TO ALLOW THE POLE BASEPLATE TO BE INSTALLED ABOVE FINISHED WHEELCHAIR RAMP GRADE.

Addendum No. 1

PROPOSED TRAFFIC SIGNAL EQUIPMENT LEGEND

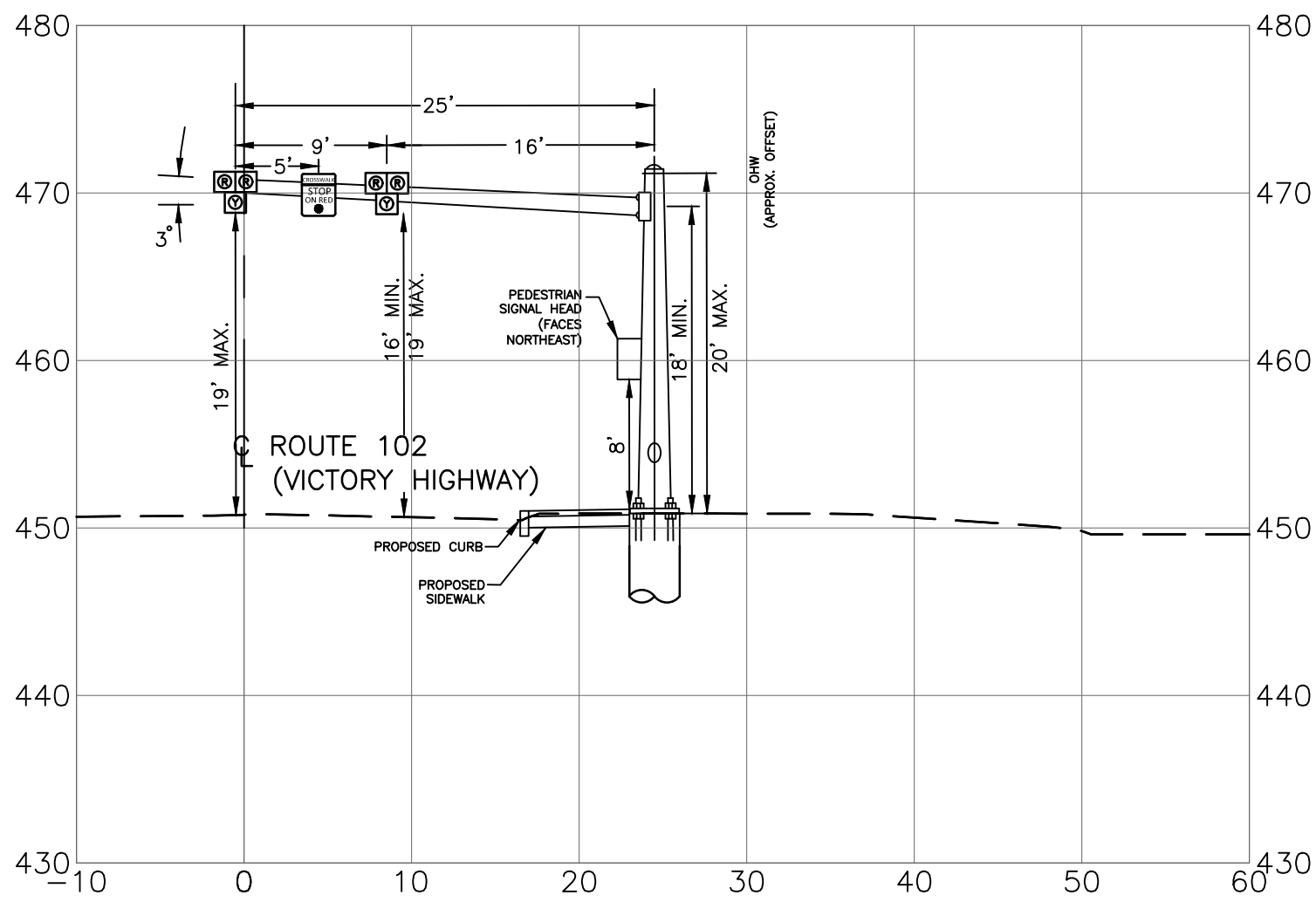
- 1a ■ HANDHOLE, TYPE A, PRECAST (R.I. STD. 18.2.0)
- 2a — 2" RIGID STEEL CONDUIT (OVERHEAD)
- 2b — 2" RIGID STEEL CONDUIT (UNDER EXIST. PAVEMENT)
- 2c — 3" RIGID STEEL CONDUIT (UNDER EXIST. PAVEMENT)
- 2d — 3" RIGID STEEL CONDUIT (OVERHEAD)
- 2e — 2" RIGID STEEL CONDUIT (UNDERGROUND)
- 2f — 3" RIGID STEEL CONDUIT (UNDERGROUND)
- 3a — 2" PVC CONDUIT (OVERHEAD)
- 3b — 3" PVC CONDUIT (UNDER EXIST. PAVEMENT)(40)
- 3c — 3" PVC CONDUIT (UNDER EXIST. PAVEMENT)(80)
- 3d — 3" PVC CONDUIT (UNDERGROUND)(40)
- 5a ● 8' ALUMINUM PEDESTAL POLE (RI STD. 19.4.0)
- 6a — 20' STEEL MAST ARM W/POLE & FOUNDATION (RI STD. 19.2.0)
- 6b — 25' STEEL MAST ARM W/POLE & FOUNDATION (RI STD. 19.2.0)
- 6c — 30' STEEL MAST ARM W/POLE & FOUNDATION (RI STD. 19.2.0)
- 6d — 35' STEEL MAST ARM W/POLE & FOUNDATION (RI STD. 19.2.0)
- 6e — 40' STEEL MAST ARM W/POLE & FOUNDATION (RI STD. 19.2.0)
- 7a — CABLE, SINGLE CONDUCTOR, NO. 6 A.W.G., 600V INSULATION
- 7b — LOOP DETECTOR SHIELDED, TWISTED CABLE, 2 CONDUCTOR, NO. 14 A.W.G.
- 7c — CABLE, 3 CONDUCTOR, NO. 14 A.W.G.
- 7d — CABLE, 5 CONDUCTOR, NO. 14 A.W.G.
- 7e — CABLE, 7 CONDUCTOR, NO. 14 A.W.G.
- 8a ← SIGNAL HEAD, 1 WAY, 3 SECTION, 12 INCH, PEDESTAL MOUNTED
- 8b ← SIGNAL HEAD, 1 WAY, 3 SECTION, 12 INCH, MAST ARM MOUNTED
- 8c ← SIGNAL HEAD, 1 WAY, 4 SECTION, 12 INCH, MAST ARM MOUNTED (DUAL ROW L.E.D. ARROWS W/SOLID AND FLASHING YELLOW INDICATIONS)
- 8d ■ PEDESTRIAN SIGNAL HEAD, 1 WAY, 2 SECTION, 12 INCH, PEDESTAL MOUNTED
- 8e ■ PEDESTRIAN SIGNAL HEAD, 1 WAY, 2 SECTION, 12 INCH, BRACKET MOUNTED
- 8f ← PEDESTRIAN HYBRID BEACON, 1 WAY, 3 SECTION, 12 INCH, MAST ARM MOUNTED
- 9a □ TRAFFIC DETECTORS, LOOP TYPE (R.I. STD. 19.6.0)
- 9c □ LOOP DETECTOR RELAY, 4-CHANNEL
- 9d □ LOOP DETECTOR RELAY, 4-CHANNEL
- 9e ● HEAVY DUTY PEDESTRIAN DETECTOR PUSH BUTTON WITH SIGN (R3-10e) AND AUDIBLE PEDESTRIAN SIGNAL EQUIPMENT
- 10a ■ CONTROLLER, 8 PHASE W/8 PHASE FRAME, GROUND MOUNTED INCLUDING CABINET AND FOUNDATION
- 10b ■ METER SOCKET WITH MANUAL BY-PASS
- 10c ■ CONTROLLER, 2 PHASE W/4 PHASE FRAME, POLE MOUNTED INCLUDING CABINET

* THE 10 FEET RISER CONDUIT FROM BASE OF THE POLE SHALL BE RIGID STEEL.
THE REMAINING RISER CONDUIT TO THE OVERHEAD WIRE CONNECTION SHALL BE PVC.

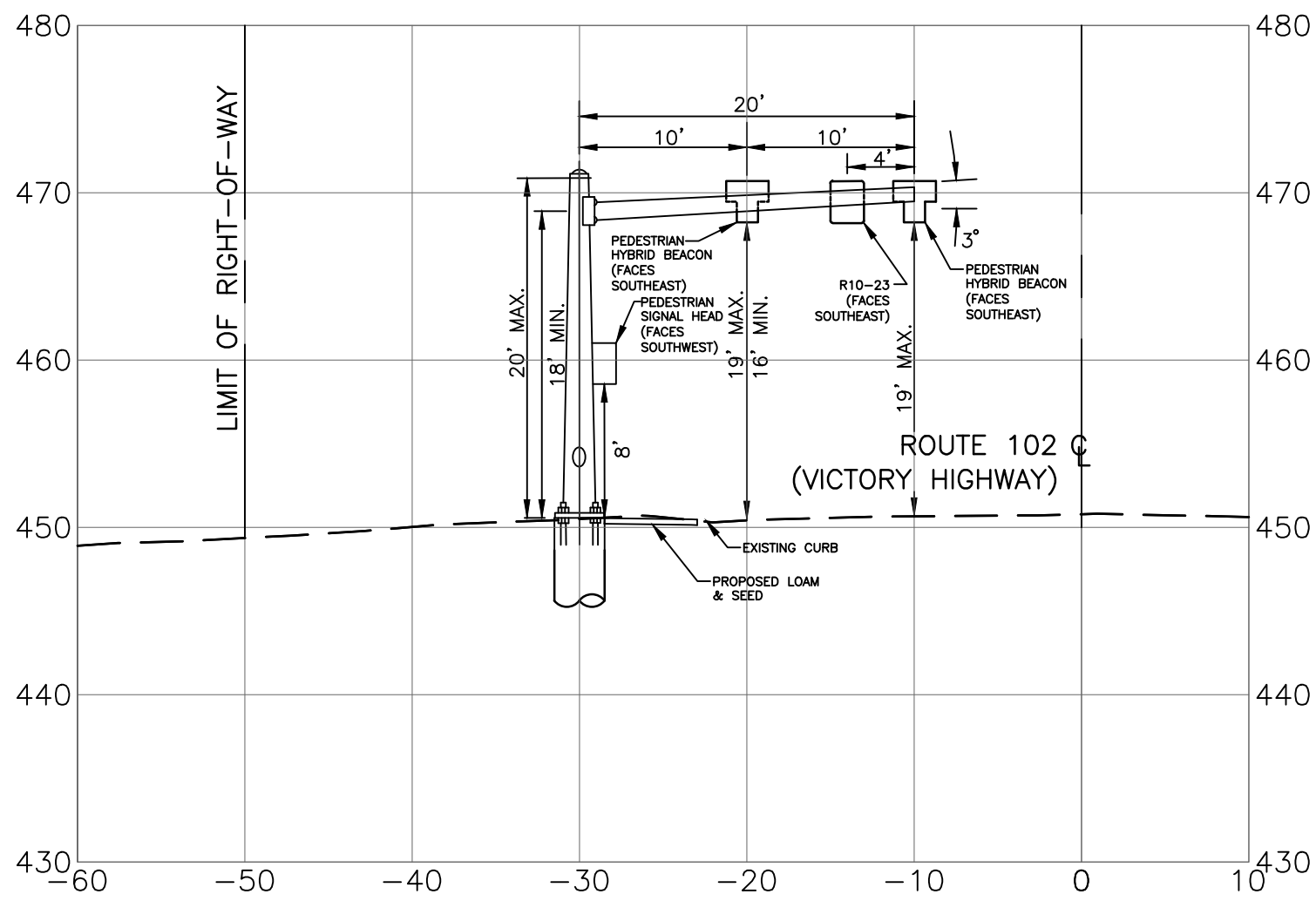


WIRING DIAGRAM

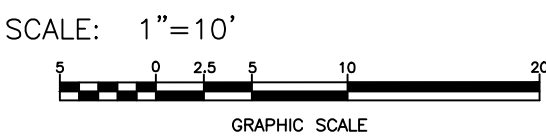
REFER TO SHEET NO. 9 FOR GENERAL PLAN.



MAST ARM AT ROUTE 102 (VICTORY HIGHWAY)
APPROXIMATE STA. 110+11.4, 24.4' RT.
FACING NORTHWEST



MAST ARM AT ROUTE 102 (VICTORY HIGHWAY)
APPROXIMATE STA. 110+13.0, 30.0' LT.
FACING NORTHWEST



Addendum No. 1

REVISIONS			REVISIONS		
NO.	DATE	BY	NO.	DATE	BY
1	7/09/20	CN			

Assembly Summary

Project Name: HSIP - Crosswalk & Sign Enhancements

Estimate Name: Addendum No. 1

R.I. Contract No.: 2019-CT-099

FAP Nos.:STPG-HSIP (084)

Item Code	Description	Depth	Factor	Qty
<u>Assembly: CONCRETE CURB (7.1.0) (CONCB) (Unit: LF Default Quantity: 68.00)</u>				
906.0210	CEMENT CONCRETE CURB PRECAST STRAIGHT STANDARD 7.1.0		1.00000	
	C8-EAST MAIN ROAD AT QUAKER HILL LANE (CONCB)			
	801+50 - 801+54 RT (CONCB)			4.00
	801+50 - 801+54 LT (CONCB)			4.00
	801+71 - 801+75 LT (CONCB)			4.00
	801+72 - 801+76 LT (CONCB)			4.00
	C6-POST ROAD AT SHELDON AVENUE (CONCB)			
	600+09 - 600+13 LT (CONCB)			4.00
	600+29 - 600+33 LT (CONCB)			4.00
	600+09 - 600+13 RT (CONCB)			4.00
	600+29 - 600+33 RT (CONCB)			4.00
	C7-PONTIAC AVENUE AT SLATER ROAD (CONCB)			
	700+60 - 700+64 LT (CONCB)			4.00
	700+81 - 700+85 LT (CONCB)			4.00
	700+61 - 700+65 RT (CONCB)			4.00
	700+81 - 701+05 RT (CONCB)			24.00

Assembly Summary

Project Name:

Estimate Name:

R.I. Contract No.:

FAP Nos.:

Item Code	Description	Depth	Factor	Qty
<u>Assembly: HMA PATCHING OF WCR & SIDEWALK (HMAPT) (Unit: SF Default Quantity: 725.00)</u>				
201.0409	REMOVE AND DISPOSE FLEXIBLE PAVEMENT		0.11111	
202.0100	EARTH EXCAVATION	12"	0.03704	
204.0100	TRIMMING AND FINE GRADING		1.00000	
401.1003	CLASS 19.0 HMA FOR PATCHING	3"	0.02075	
403.0300	ASPHALT EMULSION TACK COAT		0.11111	
603.1000	CONTROLLED LOW STRENGTH MATERIAL	9"	0.02777	
	C8-EAST MAIN ROAD AT QUAKER HILL LANE (HMAPT)			
	801+50 - 801+75 LT (HMAPT)			25.00
	801+50 - 801+76 RT (HMAPT)			26.00
	801+72 LT & RT (HMAPT)			81.00
	A-ROUTE 102 (HMAPT)			
	110+09 - 110+13 LT (HMAPT)			4.00
	110+01 - 110+21 RT (HMAPT)			20.00
	C5-WARWICK AVENUE AT BETHEL STREET (HMAPT)			
	503+46 - 503+70 LT (HMAPT)			106.00
	503+46 - 503+78 RT (HMAPT)			51.00
	504+01 - 504+19 RT (HMAPT)			30.00
	C4-WARWICK AVENUE AT CAVALCADE BOULEVARD (HMAPT)			
	400+74 - 400+91 LT (HMAPT)			29.00
	401+21 - 401+41 LT (HMAPT)			29.00
	401+13 - 401+38 RT (HMAPT)			25.00
	C7-PONTIAC AVENUE AT SLATER ROAD (HMAPT)			
	700+60 - 700+96 LT (HMAPT)			39.00
	700+61 - 701+05 RT (HMAPT)			44.00
	C6-POST ROAD AT SHELDON AVENUE (HMAPT)			
	600+09 - 600+33 LT (HMAPT)			24.00
	600+09 - 600+33 RT (HMAPT)			24.00
	600+15 - RT - 600+62 LT (HMAPT)			168.00

Assembly Summary

Project Name:

Estimate Name:

R.I. Contract No.:

FAP Nos.:

Item Code	Description	Depth	Factor	Qty
<u>Assembly: LOAM & SEED (LOASD) (Unit: SF Default Quantity: 906.00)</u>				
202.0100	EARTH EXCAVATION	4"	0.01234	
204.0100	TRIMMING AND FINE GRADING		0.11111	
L01.0102	LOAM BORROW 4 INCHES DEEP		0.11111	
L02.0101	GENERAL HIGHWAY SEEDING (TYPE 1)	4"	0.11111	
	C8-EAST MAIN ROAD AT QUAKER HILL LANE (LOASD)			
	801+50 - 801+75 RT (LOASD)			50.00
	801+30 - 801+50 RT (LOASD)			30.00
	C7-PONTIAC AVENUE AT SLATER ROAD (LOASD)			
	700+60 - 700+96 LT (LOASD)			77.00
	700+61 - 701+05 RT (LOASD)			87.00
	C6-POST ROAD AT SHELDON AVENUE (LOASD)			
	600+09 - 600+33 RT (LOASD)			48.00
	C5-WARWICK AVENUE AT BETHEL STREET (LOASD)			
	503+46 - 503+70 LT (LOASD)			24.00
	504+07 - 504+19 RT (LOASD)			9.00
	C4-WARWICK AVENUE AT CAVALCADE BOULEVARD (LOASD)			
	401+26 - 401+37 LT (LOASD)			30.00
	A-ROUTE 102 (LOASD)			
	109+93 - 110+25 RT (LOASD)			296.00
	110+07 - 110+16 LT (LOASD)			255.00
<u>Assembly: REMOVE & DISPOSE CONCRETE CURB & SIDEWALKS (RDCCS) (Unit: LF Default Quantity: 183.00)</u>				
201.0402	REMOVE AND DISPOSE CONCRETE CURB		1.00000	
201.0403	REMOVE AND DISPOSE SIDEWALKS		0.55555	
	C8-EAST MAIN ROAD AT QUAKER HILL LANE (RDCCS)			
	801+50 - 801+75 LT (RDCCS)			25.00
	801+50 - 801-76 RT (RDCCS)			26.00
	C7-PONTIAC AVENUE AT SLATER ROAD (RDCCS)			
	700+60 - 700+96 LT (RDCCS)			42.00
	700+63 - 701+05 RT (RDCCS)			42.00
	C6-POST ROAD AT SHELDON AVENUE (RDCCS)			
	600+09 - 600+33 LT (RDCCS)			24.00
	600+09 - 600+33 RT (RDCCS)			24.00

Assembly Summary

Project Name:

Estimate Name:

R.I. Contract No.:

FAP Nos.:

Item Code	Description	Depth	Factor	Qty
<u>Assembly: REMOVE & DISPOSE GRANITE CURB & SIDEWALKS (RDGCS) (Unit: LF Default Quantity: 387.00)</u>				
201.0401	REMOVE AND DISPOSE GRANITE CURB		1.00000	
201.0403	REMOVE AND DISPOSE SIDEWALKS		0.55555	
	C5-WARWICK AVENUE AT BETHEL STREET (RDGCS)			
	503+46 - 503+70 LT (RDGCS)			24.00
	503+46 - 503+78 RT (RDGCS)			250.00
	504+01 - 504+19 RT (RDGCS)			29.00
	C4-WARWICK AVENUE AT CAVLCADDE BOULEVARD (RDGCS)			
	400+74 - 400+91 LT (RDGCS)			30.00
	401+21 - 400+41 LT (RDGCS)			29.00
	401+13 - 401+38 RT (RDGCS)			25.00
<u>Assembly: REMOVE AND REPLACE GUARDRAIL (RPGDL) (Unit: LF Default Quantity: 350.00)</u>				
201.0415	REMOVE AND DISPOSE GUARDRAIL AND POST ALL TYPES		1.00000	
213.0100	PLACEMENT OF MILLINGS BENEATH GUARDRAIL		1.00000	
901.0101	GUARDRAIL STEEL BEAM SINGLE FACE EARTH AND ASPHALT		1.00000	
	B1- INTERSTATE 95 (RPGDL)			
	4+75 - 5+25 RT (RPGDL)			50.00
	13+00 - 13+50 RT (RPGDL)			50.00
	68+50 - 69+00 LT (RPGDL)			50.00
	75+50 - 76+00 (RPGDL)			50.00
	B2 - ROUTE 24 (RPGDL)			
	236+00 - 236+50 LT (RPGDL)			50.00
	241+75 - 242+25 RT (RPGDL)			50.00
	246+00 - 246+50 LT (RPGDL)			50.00

Assembly Summary

Project Name:

Estimate Name:

R.I. Contract No.:

FAP Nos.:

Item Code	Description	Depth	Factor	Qty
<u>Assembly: SIGN FOUNDATION REMOVAL (SFDRE) (Unit: EACH Default Quantity: 20.00)</u>				
201.0321	CLEARING AND GRUBBING		50.00000	
202.0700	COMMON BORROW		1.00000	
204.0100	TRIMMING AND FINE GRADING		50.00000	
206.0312	COMPOST FILTER SOCK 12 INCH DIAMETER		45.00000	
L01.0104	PLANTABLE SOIL 4 INCHES DEEP		50.00000	
L02.0101	GENERAL HIGHWAY SEEDING (TYPE 1)		50.00000	
	B1- INTERSTATE 95 (SFDRE)			
	5+06 RT (SFDRE)			2.00
	13+22 RT (SFDRE)			2.00
	17+96 RT (SFDRE)			2.00
	31+86 RT (SFDRE)			2.00
	41+80 RT (SFDRE)			2.00
	85+07 LT (SFDRE)			2.00
	99+32 LT (SFDRE)			2.00
	107+86 LT (SFDRE)			2.00
	115+68 LT (SFDRE)			2.00
	B2 - ROUTE 24 (SFDRE)			
	242+00 RT (SFDRE)			2.00

Assembly Summary

Project Name:

Estimate Name:

R.I. Contract No.:

FAP Nos.:

Item Code	Description	Depth	Factor	Qty
<u>Assembly: SIGN INSTALLATIONS (SINST) (Unit: EACH Default Quantity: 40.00)</u>				
201.0321	CLEARING AND GRUBBING		50.00000	
202.0201	ROCK EXCAVATION MECHANICAL		0.50000	
204.0100	TRIMMING AND FINE GRADING		50.00000	
206.0312	COMPOST FILTER SOCK 12 INCH DIAMETER		45.00000	
L01.0104	PLANTABLE SOIL 4 INCHES DEEP		50.00000	
L02.0101	GENERAL HIGHWAY SEEDING (TYPE 1)		50.00000	
	B1- INTERSTATE 95 (SINST)			
	5+00 RT D8-1, 132"X84" (SINST)			2.00
	18+13 RT R13-1, 96"X90" (SINST)			2.00
	32+00 RT D5-1, 126"X48" (SINST)			2.00
	43+05 RT D8-2, 84"X48" (SINST)			2.00
	55+00 RT D8-3, 108"X78" (SINST)			2.00
	60+77 RT D8-3, 108"X78" (SINST)			2.00
	61+50 LT D8-3, 108"X78" (SINST)			2.00
	68+70 LT D8-3, 108"X78" (SINST)			2.00
	81+14 LT D8-2, 84"X48" (SINST)			2.00
	85+00 LT D5-1, 126"X48" (SINST)			2.00
	100+27 LT R13-1, 96"X90" (SINST)			2.00
	112+20 LT D8-1, 132"X84" (SINST)			2.00
	B2 - ROUTE 24 (SINST)			
	201+52 LT D8-3, 66"X60" (SINST)			2.00
	213+50 LT D8-2, 66"X36" (SINST)			2.00
	236+36 LT R13-1, 72"X63" (SINST)			2.00
	246+30 LT D8-1, 78"X60" (SINST)			2.00
	284+33 RT D8-1, 78"X60" (SINST)			2.00
	288+45 RT R13-1, 72"X63" (SINST)			2.00
	301+60 RT D8-2, 66"X36" (SINST)			2.00
	315+25 RT D8-3, 66"X60" (SINST)			2.00

Assembly Summary

Project Name:

Estimate Name:

R.I. Contract No.:

FAP Nos.:

Item Code	Description	Depth	Factor	Qty
<u>Assembly: SIDEWALK (STD 43.1.0) (SWALK) (Unit: SF Default Quantity: 2063.00)</u>				
202.0100	EARTH EXCAVATION	12"	0.03704	
204.0100	TRIMMING AND FINE GRADING		0.11111	
302.0100	GRAVEL BORROW SUBBASE COURSE	8"	0.02469	
905.0110	PORTLAND CEMENT SIDEWALK MONOLITHIC STANDARD 43.1.0	4"	0.01234	
	C8-EAST MAIN ROAD AT QUAKER HILL LANE (SWALK)			
	801+50 - 801+75 LT (SWALK)			150.00
	801+50 - 801-76 RT (SWALK)			156.00
	A-ROUTE 102 (SWALK)			
	110+09 - 110+13 LT (SWALK)			24.00
	110+01 - 110+21 RT (SWALK)			126.00
	C7-PONTIAC AVENUE AT SLATER ROAD (SWALK)			
	700+60 - 700+96 LT (SWALK)			184.00
	700+61 - 701+05 RT (SWALK)			240.00
	C4-WARWICK AVENUE AT CAVALCADE BOULEVARD (SWALK)			
	503+46 - 503+70 LT (SWALK)			106.00
	503+46 - 503+78 RT (SWALK)			206.00
	504+01 - 504+19 RT (SWALK)			133.00
	C5-WARWICK AVENUE AT BETHEL STREET (SWALK)			
	503+46 - 503+70 LT (SWALK)			106.00
	503+46 - 503+78 RT (SWALK)			206.00
	504+01 - 504+19 RT (SWALK)			133.00
	C6-POST ROAD AT SHELDON AVENUE (SWALK)			
	600+09 - 600+33 LT (SWALK)			134.00
	600+09 - 600+33 RT (SWALK)			108.00
	600+33 - 600+62 LT (SWALK)			51.00

Table of Contents - Distribution of Quantities

Project Name - HSIP - Crosswalk & Sign Enhancements

Estimate Name - Addendum No. 1

R.I. Contract No. - 2019-CT-099

FAP Nos: STPG-HSIP (084)

ItemCode	Description	Page
201.0321	CLEARING AND GRUBBING	1
201.0401	REMOVE AND DISPOSE GRANITE CURB	2
201.0402	REMOVE AND DISPOSE CONCRETE CURB	3
201.0403	REMOVE AND DISPOSE SIDEWALKS	3
201.0409	REMOVE AND DISPOSE FLEXIBLE PAVEMENT	4
201.0415	REMOVE AND DISPOSE GUARDRAIL AND POST ALL TYPES	5
201.0421	REMOVE AND DISPOSE BITUMINOUS CURB	5
201.0601	REMOVE AND DISPOSE GROUND MOUNTED SIGNS	6
201.0610	REMOVE AND DISPOSE DIRECTIONAL, WARNING, REGULATORY, SERVICE, AND STREET SIGNS	6
201.9901	REMOVE AND RELOCATE PRIVATE SIGN	7
202.0100	EARTH EXCAVATION	7
202.0201	ROCK EXCAVATION MECHANICAL	10
202.0700	COMMON BORROW	11
204.0100	TRIMMING AND FINE GRADING	12
206.0312	COMPOST FILTER SOCK 12 INCH DIAMETER	16
209.0200	SACK INSERT CATCH BASIN INLET PROTECTION	18
212.2100	** ITEM DELETED **	18
213.0100	PLACEMENT OF MILLINGS BENEATH GUARDRAIL	18
302.0100	GRAVEL BORROW SUBBASE COURSE	19
401.1003	CLASS 19.0 HMA FOR PATCHING	20
403.0300	ASPHALT EMULSION TACK COAT	21
603.1000	CONTROLLED LOW STRENGTH MATERIAL	22
707.0900	ADJUST MANHOLES TO GRADE	23
901.0101	GUARDRAIL STEEL BEAM SINGLE FACE EARTH AND ASPHALT	23
905.0110	PORTLAND CEMENT SIDEWALK MONOLITHIC STANDARD 43.1.0	23
906.0119	3' GRANITE TRANSITION CURB STANDARD 7.3.1	24
906.0120	GRANITE WHEELCHAIR RAMP CURB STANDARDS 7.3.3, 43.3.0 AND 43.3.1	24
906.0130	GRANITE RAMP STONE STRAIGHT STANDARD 7.3.9	25
906.0131	GRANITE RAMP STONE CIRCULAR STANDARD 7.3.9	25
906.0210	CEMENT CONCRETE CURB PRECAST STRAIGHT STANDARD 7.1.0	26
906.0250	PRECAST CONCRETE WHEELCHAIR RAMP CURB STANDARDS 7.1.3, 43.3.0 AND 43.3.1	26
906.0260	PRECAST CONCRETE RAMP STONE 12-INCH STRAIGHT STANDARD 7.1.9	27
906.0261	PRECAST CONCRETE RAMP STONE 12-INCH CIRCULAR STANDARD 7.1.9	27
914.5010	FLAGPERSONS	28
914.5020	FLAGPERSONS - OVERTIME	28
919.0101	TEST PITS	28
923.0105	DRUM BARRICADE STANDARD 26.2.0	28
923.0125	PLASTIC PIPE TYPE III BARRICADE STANDARD 26.3.1	28
923.0200	FLUORESCENT TRAFFIC CONES STANDARD 26.1.0	28
928.9901	TRUCK MOUNTED ATTENUATOR WITH FLASHING ARROW BOARD	28
929.0110	FIELD OFFICE	29
932.0200	FULL-DEPTH SAWCUT OF BITUMINOUS PAVEMENT	29
932.0210	FULL DEPTH SAWCUT OF BITUMINOUS PAVEMENT AND RIGID BASE	30
932.0220	FULL DEPTH SAWCUT OF BITUMINOUS SIDEWALK/DRIVEWAY	31
932.0230	FULL DEPTH SAWCUT OF PORTLAND CEMENT CONCRETE SIDEWALK/DRIVEWAY	31
936.0100	MOBILIZATION AND DEMOBILIZATION	32
937.0200	MAINTENANCE AND MOVEMENT TRAFFIC PROTECTION	32

Table of Contents - Distribution of Quantities

Project Name - HSIP - Crosswalk & Sign Enhancements

Estimate Name - Addendum No. 1

R.I. Contract No. - 2019-CT-099

FAP Nos: STPG-HSIP (084)

ItemCode	Description	Page
942.0200	DETECTABLE WARNING PANEL STANDARD 48.1.0	32
943.0200	TRAINEE MAN-HOURS	33
L01.0102	LOAM BORROW 4 INCHES DEEP	33
L01.0104	PLANTABLE SOIL 4 INCHES DEEP	34
L02.0101	GENERAL HIGHWAY SEEDING (TYPE 1)	36
L08.0109	TREE TRIMMING	38
T04.5001	** ITEM DELETED **	38
T04.5305	** ITEM DELETED **	39
T05.0100	PRECAST TYPE A HANDHOLE STANDARD 18.2.0	40
T06.1020	** ITEM DELETED **	40
T06.2020	** ITEM DELETED **	40
T06.5430	** ITEM DELETED **	41
T11.9901	TRAFFIC SIGNAL CONSTRUCTION LOCATION A - VICTORY HIGHWAY (ROUTE 102) BETWEEN BREAKHEART HILL ROAD AND I-95, WEST GREENWICH	41
T12.9150	METER SOCKET W/MANUAL BY-PASS	42
T15.0100	DIRECTIONAL REGULATORY AND WARNING SIGNS	42
T15.0200	REMOVE AND RELOCATE DIRECTIONAL REGULATORY AND WARNING SIGN	44
T15.9901	RECTANGULAR RAPID FLASHING BEACON (SOLAR)	44
T15.9902	RECTANGULAR RAPID FLASHING BEACON SYSTEM (AC)	45
T16.0100	GROUND MOUNTED PRIMARY DIRECTIONAL SIGN PANELS EXTRUDED ALUMINUM	45
T16.9901	GROUND MOUNTED PRIMARY DIRECTIONAL SIGN POST - STEEL BREAKAWAY	46
T16.9902	FURNISHING, INSTALLING, WARRANTY, AND VALIDATION TESTING OF WEIGHSTATION DISPLAY SYSTEM (SOLAR)	47
T16.9903	FURNISHING, INSTALLING, WARRANTY, AND VALIDATION TESTING OF WEIGH STATION DISPLAY SYSTEM (AC)	47
T18.0100	FLEXIBLE DELINEATOR POST	47
T20.2406	6 INCH WHITE FINAL EPOXY RESIN PAVEMENT MARKINGS	48
T20.2412	12 INCH WHITE FINAL EPOXY RESIN PAVEMENT MARKINGS	48
T20.2804	4 INCH YELLOW FINAL EPOXY RESIN PAVEMENT MARKINGS	50
T20.2812	12 INCH YELLOW FINAL EPOXY RESIN PAVEMENT MARKINGS	50
T20.3401	FINAL EPOXY RESIN PAVEMENT MARKING SYMBOL - ARROW (STRAIGHT, LEFT, RIGHT OR COMBINED) STANDARD 20.1.0	50
T20.3405	FINAL EPOXY RESIN PAVEMENT MARKING SYMBOL - YIELD LINE TRIANGLE (ALL SIZES)	51
T20.4506	REMOVE PAVEMENT MARKING LINE - LESS THAN OR EQUAL TO 6 INCHES WIDE	52
T20.4508	REMOVE PAVEMENT MARKING LINE - GREATER THAN 6 INCHES WIDE	52
T20.4511	REMOVE PAVEMENT MARKING SYMBOL - ARROW (STRAIGHT, LEFT, RIGHT OR COMBINED)	53

Table of Contents - Distribution of Quantities

Project Name - HSIP - Crosswalk & Sign Enhancements

Estimate Name - Addendum No. 1

R.I. Contract No. - 2019-CT-099

FAP Nos: STPG-HSIP (084)

ItemCode	Description	Page
T20.4515	REMOVE PAVEMENT MARKING SYMBOL - YIELD LINE TRIANGLE (ALL SIZES)	54
T20.4520	REMOVE PAVEMENT MARKING WORD ("ONLY", "STOP", "YIELD", "AHEAD", "XING", "SCHOOL", OR OTHER)	54
922.0100	TEMPORARY CONSTRUCTION SIGNS STANDARD 29.1.0 AND 27.1.1	54

Distribution of Quantities

Project Name - HSIP - Crosswalk & Sign Enhancements

Estimate Name - Addendum No. 1

R.I. Contract No. - 2019-CT-099

FAP Nos: STPG-HSIP (084)

Item No.	Item Code	Description	UM	Qty.	Pay Code	Seq. No.
009	201.0610 Cont.	204+46 LT		1.00	0021	01
		313+63 RT		1.00	0021	01
		C2- ELMWOOD AVENUE AT THURSTON STREET				
		202+13 LT		2.00	0021	01
		202+16 RT		2.00	0021	01
		C3- ELMWOOD AVENUE AT CARLISLE STREET				
		301+26 RT		1.00	0021	01
		301+40 LT		2.00	0021	01
		C4- WARWICK AVENUE AT CAVALCADE BOULEVARD				
		400+ 81 LT		1.00	0021	01
		400+82 RT		1.00	0021	01
		C7- PONTIAC AVENUE AT SLATER ROAD				
		700+86 LT		2.00	0021	01
		701+05 RT		2.00	0021	01
		C8- EAST MAIN ROAD AT QUAKER HILL LANE				
		801+86 LT		2.00	0021	01
Item 201.0610 Total:				31.00		
010	201.9901	REMOVE AND RELOCATE PRIVATE SIGN	EACH			
		C8-EAST MAIN ROAD AT QUAKER HILL LANE				
		801+72 RT		1.00	0021	01
Item 201.9901 Total:				1.00		
011	202.0100	EARTH EXCAVATION	CY			
		A-ROUTE 102 (HMAPT)				
		110+01 - 110+21 RT (HMAPT)		0.74	0021	01
		110+09 - 110+13 LT (HMAPT)		0.14	0021	01

Distribution of Quantities

Project Name - HSIP - Crosswalk & Sign Enhancements

Estimate Name - Addendum No. 1

R.I. Contract No. - 2019-CT-099

FAP Nos: STPG-HSIP (084)

Item No.	Item Code	Description	UM	Qty.	Pay Code	Seq. No.
016	209.0200	SACK INSERT CATCH BASIN INLET	EACH			
		PROTECTION				
		A-ROUTE 102				
		109+21 LT		1.00	0021	01
		109+21 RT		1.00	0021	01
		C2-ELMWOOD AVENUE AT THURSTON STREET				
		202+15 LT		1.00	0021	01
		202+15 RT		1.00	0021	01
		C4-WARWICK AVENUE AT CAVALCADE BOULEVARD				
		401+34 LT		2.00	0021	01
		401+34 RT		2.00	0021	01
		C5-WARWICK AVENUE AT BETHEL STREET				
		504+20 RT		1.00	0021	01
		C6-POST ROAD AT CHAMBLY AVENUE				
		600+88 RT		1.00	0021	01
		C7-PONTIAC AVENUE AT SLATER ROAD				
		701+30 RT		1.00	0021	01
Item 209.0200 Total:				11.00		
017	212.2100	MAINTENANCE AND CLEANING OF EROSION AND POLLUTION CONTROLS	LS			
		PROJECT WIDE				
		PROJECT WIDE			0021	01
Item 212.2100 Total:				**DELETED**		
018	213.0100	PLACEMENT OF MILLINGS BENEATH GUARDRAIL	LF			
		B1- INTERSTATE 95 (RPGDL)				
		13+00 - 13+50 RT (RPGDL)		50.00	0021	01
		4+75 - 5+25 RT (RPGDL)		50.00	0021	01

Distribution of Quantities

Project Name - HSIP - Crosswalk & Sign Enhancements

Estimate Name - Addendum No. 1

R.I. Contract No. - 2019-CT-099

FAP Nos: STPG-HSIP (084)

Item No.	Item Code	Description	UM	Qty.	Pay Code	Seq. No.
052	L02.0101 Cont.	504+07 - 504+19 RT (LOADS)		0.99	0021	01
		C6-POST ROAD AT SHELDON AVENUE				
		(LOADS)				
		600+09 - 600+33 RT (LOADS)		5.33	0021	01
		C7-PONTIAC AVENUE AT SLATER				
		ROAD (LOADS)				
		700+60 - 700+96 LT (LOADS)		8.56	0021	01
		700+61 - 701+05 RT (LOADS)		9.66	0021	01
		C8-EAST MAIN ROAD AT QUAKER				
		HILL LANE (LOADS)				
		801+30 - 801+50 RT (LOADS)		3.33	0021	01
		801+50 - 801+75 RT (LOADS)		5.56	0021	01
		PROJECT WIDE				
		CONTINGENCY		91.37	0021	01
Item L02.0101 Total:				3,192.00		
053	L08.0109	TREE TRIMMING	MHRS			
		B1- INTERSTATE 95				
		4+60 - 5+00 RT		4.00	0021	01
		53+45 - 54+15 RT		4.00	0021	01
		C1- ELMWOOD AVENUE AT SPOONER				
		STREET				
		101+90 LT		4.00	0021	01
		C2-ELMWOOD AVENUE AT THURSTON				
		STREET				
		202+18 RT		4.00	0021	01
		202+42 LT		4.00	0021	01
		C6-POST ROAD AT SHELDON AVENUE				
		599+90 RT		4.00	0021	01
Item L08.0109 Total:				24.00		
054	T04.5001	6 AWG SINGLE CONDUCTOR CABLE 600V	LF			
		INSULATION				

Distribution of Quantities

Project Name - HSIP - Crosswalk & Sign Enhancements

Estimate Name - Addendum No. 1

R.I. Contract No. - 2019-CT-099

FAP Nos: STPG-HSIP (084)

Item No.	Item Code	Description	UM	Qty.	Pay Code	Seq. No.
054	T04.5001 Cont.	B2 - ROUTE 24				
		STA 299+00 - 299+10 RT			0021	01
		STA 299+10 - 301+50 RT			0021	01

Distribution of Quantities

Project Name - HSIP - Crosswalk & Sign Enhancements

Estimate Name - Addendum No. 1

R.I. Contract No. - 2019-CT-099

FAP Nos: STPG-HSIP (084)

Item No.	Item Code	Description	UM	Qty.	Pay Code	Seq. No.
054	T04.5001 Cont.	STA 301+50 - 301+60 RT			0021	01
		C6- POST ROAD AT SHELDON AVENUE				
		(CDTAC)				
		600+12 RT - 600+15 RT (CDTAC)			0021	01
		600+15 RT - 600+63 LT (CDTAC)			0021	01
		600+15 RT (CDTAC)			0021	01
		600+63 LT - 600+64 Lt (CDTAC)			0021	01
		C6- POST ROAD AT SHELDON AVENUE				
		(CDTUP)				
		600+64 LT (CDTUP)			0021	01
		C8- EAST MAIN ROAD AT QUAKER				
		HILL AVENUE				
		801+30 RT - 801+68 RT			0021	01
		C8- EAST MAIN ROAD AT QUAKER				
		HILL AVENUE (CDTAC)				
		801+30 RT - 801+68 RT (CDTAC)			0021	01
		801+70 RT - 801+72 LT (CDTAC)			0021	01
		801+70 RT - 801+72 RT (CDTAC)			0021	01
		C8- EAST MAIN ROAD AT QUAKER				
		HILL AVENUE (CDTUP)				
		801+30 RT (CDTUP)			0021	01
Item T04.5001 Total:				**DELETED**		
055	T04.5305	14 AWG 5 CONDUCTOR CABLE	LF			
		C6- POST ROAD AT SHELDON AVENUE				
		(CDTAC)				
		600+12 RT - 600+15 RT (CDTAC)			0021	01
		600+15 RT - 600+63 LT (CDTAC)			0021	01
		600+15 RT (CDTAC)			0021	01
		600+63 LT - 600+64 Lt (CDTAC)			0021	01
		C6- POST ROAD AT SHELDON AVENUE				
		(CDTUP)				
		600+64 LT (CDTUP)			0021	01

Distribution of Quantities

Project Name - HSIP - Crosswalk & Sign Enhancements

Estimate Name - Addendum No. 1

R.I. Contract No. - 2019-CT-099

FAP Nos: STPG-HSIP (084)

Item No.	Item Code	Description	UM	Qty.	Pay Code	Seq. No.
055	T04.5305 Cont.	C8- EAST MAIN ROAD AT QUAKER HILL AVENUE (CDTAC) 801+30 RT - 801+68 RT (CDTAC) 801+70 RT - 801+72 LT (CDTAC) 801+70 RT - 801+72 RT (CDTAC) C8- EAST MAIN ROAD AT QUAKER HILL AVENUE (CDTUP) 801+30 RT (CDTUP)			0021	01
Item T04.5305 Total:				**DELETED**		
056	T05.0100	PRECAST TYPE A HANDHOLE STANDARD 18.2.0 C6- POST ROAD AT SHELDON AVENUE 600+15 LT 600+15 RT 600+63 LT C8- EAST MAIN ROAD AT QUAKER HILL AVENUE 801+70 RT ROUTE 24 299+10 RT 301+50 RT	EACH		0021	01
Item T05.0100 Total:				6.00		
057	T06.1020	2 IN. RIGID STEEL CONDUIT - UNDERGROUND ROUTE 24 STA 299+00 - 299+10 RT STA 299+10 - 301+50 RT STA 301+50 - 301+60 RT	LF		0021	01
Item T06.1020 Total:				**DELETED**		
058	T06.2020	2 IN. RIGID STEEL CONDUIT-OVERHEAD	LF			

Distribution of Quantities

Project Name - HSIP - Crosswalk & Sign Enhancements

Estimate Name - Addendum No. 1

R.I. Contract No. - 2019-CT-099

FAP Nos: STPG-HSIP (084)

Item No.	Item Code	Description	UM	Qty.	Pay Code	Seq. No.
058	T06.2020 Cont.	C6- POST ROAD AT SHELDON AVENUE (CDTUP) 600+64 LT (CDTUP)			0021	01
		C8- EAST MAIN ROAD AT QUAKER HILL AVENUE (CDTUP) 801+30 RT (CDTUP)			0021	01
Item T06.2020 Total:				**DELETED**		
059	T06.5430	3 INCH SCHEDULE 80 POLYVINYL CHLORIDE PLASTIC CONDUIT - UNDER EXISTING PAVEMENT C6- POST ROAD AT SHELDON AVENUE (CDTAC) 600+12 RT - 600+15 RT (CDTAC) 600+15 RT - 600+63 LT (CDTAC) 600+15 RT (CDTAC) 600+63 LT - 600+64 LT (CDTAC) C8- EAST MAIN ROAD AT QUAKER HILL AVENUE (CDTAC) 801+30 RT - 801+68 RT (CDTAC) 801+70 RT - 801+72 LT (CDTAC) 801+70 RT - 801+72 RT (CDTAC)	LF			
					0021	01
					0021	01
					0021	01
					0021	01
					0021	01
					0021	01
					0021	01
					0021	01
					0021	01
Item T06.5430 Total:				**DELETED**		
060	T11.9901	TRAFFIC SIGNAL CONSTRUCTION LOCATION A - VICTORY HIGHWAY (ROUTE 102) BETWEEN BREAKHEART HILL ROAD AND I-95, WEST GREENWICH LOCATION A - RTE 102 110+10 - HAWK LOCATION A - RTE 102 110+10 - HAWK	LS			
					0021	01
				1.00	0021	01
Item T11.9901 Total:				1.00		

Distribution of Quantities

Project Name - HSIP - Crosswalk & Sign Enhancements

Estimate Name - Addendum No. 1

R.I. Contract No. - 2019-CT-099

FAP Nos: STPG-HSIP (084)

Item No.	Item Code	Description	UM	Qty.	Pay Code	Seq. No.
061	T12.9150	METER SOCKET W/MANUAL BY-PASS	EACH			
		B2 - ROUTE 24				
		STA. 299+00 Rt		1.00	0021	01
		C6- POST ROAD AT SHELDON AVENUE				
		600+64 LT		1.00	0021	01
		C8- EAST MAIN ROAD AT QUAKER HILL AVENUE				
		801+30 RT		1.00	0021	01
Item T12.9150 Total:				3.00		
062	T15.0100	DIRECTIONAL REGULATORY AND WARNING SIGNS	SF			
		A- ROUTE 102				
		107+27 RT W11-2, W16-9P		8.25	0021	01
		109+23 RT R10-6a		5.00	0021	01
		109+75 RT R10-15R		6.25	0021	01
		110+08 RT R10-23 (MOD)		5.00	0021	01
		110+27 LT R10-15R		6.25	0021	01
		110+62 RT R10-15L		6.25	0021	01
		B1- INTERSTATE 95				
		18+15 RT R13-1		60.00	0021	01
		32+00 RT D5-1		42.00	0021	01
		43+12 RT D8-2		28.00	0021	01
		5+00 RT D8-1		77.00	0021	01
		55+10 RT D8-3		58.50	0021	01
		60+77 RT D8-3		58.50	0021	01
		61+47 LT D8-3		58.50	0021	01
		B1-2 - INTERSTATE 95				
		100+27 LT R13-1		60.00	0021	01
		112+20 LT D8-1		77.00	0021	01
		68+69 LT D8-3		58.50	0021	01
		81+14 LT D8-2		28.00	0021	01
		85+00 LT D5-1		42.00	0021	01

Distribution of Quantities

Project Name - HSIP - Crosswalk & Sign Enhancements

Estimate Name - Addendum No. 1

R.I. Contract No. - 2019-CT-099

FAP Nos: STPG-HSIP (084)

Item No.	Item Code	Description	UM	Qty.	Pay Code	Seq. No.
062	T15.0100 Cont.	B2 - ROUTE 24				
		201+53 LT D8-3		27.50	0021	01

Distribution of Quantities

Project Name - HSIP - Crosswalk & Sign Enhancements

Estimate Name - Addendum No. 1

R.I. Contract No. - 2019-CT-099

FAP Nos: STPG-HSIP (084)

Item No.	Item Code	Description	UM	Qty.	Pay Code	Seq. No.
062	T15.0100 Cont.	213+49 LT D8-2		16.50	0021	01
		236+39 LT R13-1		31.50	0021	01
		246+31 LT D8-1		32.50	0021	01
		B2-2- ROUTE 24				
		284+33 RT D8-1		32.50	0021	01
		288+42 RT R13-1		31.50	0021	01
		303+48 RT D8-2		16.50	0021	01
		315+29 RT D8-3		27.50	0021	01
		C1- ELMWOOD AVENUE AT SPOONER STREET				
		101+24 RT R1-5		9.00	0021	01
		102+17 LT R1-5		9.00	0021	01
		C2- ELMWOOD AVENUE AT THURSTON STREET				
		201+62 R1-5R		9.00	0021	01
		201+62 RT R1-5L		9.00	0021	01
		202+62 LT R1-5L		9.00	0021	01
		202+62 R1-5R		9.00	0021	01
		C3- ELMWOOD AVENUE AT CARLISLE STREET				
		301+01 R1-5R		9.00	0021	01
		301+03 RT R1-5L		9.00	0021	01
		301+81 R1-5R		9.00	0021	01
		301+83 LT R1-5L		9.00	0021	01
		C4- WARWICK AVENUE AT CAVALCADE				
		400+75 RT R1-5		9.00	0021	01
		401+59 LT R1-5		9.00	0021	01
		C5- WARWICK AVENUE AT BETHEL STREET				
		503+24 RT R1-5		9.00	0021	01
		504+12 LT R1-5		9.00	0021	01
		C6- POST ROAD AT SHELDON AVENUE				
		599+90 RT R1-5		9.00	0021	01

Distribution of Quantities

Project Name - HSIP - Crosswalk & Sign Enhancements

Estimate Name - Addendum No. 1

R.I. Contract No. - 2019-CT-099

FAP Nos: STPG-HSIP (084)

Item No.	Item Code	Description	UM	Qty.	Pay Code	Seq. No.
062	T15.0100 Cont.	600+55 LT R1-5		9.00	0021	01
		C8- EAST MAIN ROAD AT QUAKER HILL LANE				
		801+07 RT R1-5		9.00	0021	01

Distribution of Quantities

Project Name - HSIP - Crosswalk & Sign Enhancements

Estimate Name - Addendum No. 1

R.I. Contract No. - 2019-CT-099

FAP Nos: STPG-HSIP (084)

Item No.	Item Code	Description	UM	Qty.	Pay Code	Seq. No.
062	T15.0100	Cont.	802+16 LT R1-5	9.00	0021	01
		PROJECT WIDE				
		PROJECT WIDE		0.50	0021	01
Item T15.0100 Total:				1,063.50		
063	T15.0200	REMOVE AND RELOCATE DIRECTIONAL REGULATORY AND WARNING SIGN	EACH			
		B2 - ROUTE 24				
		STA. 206+30 LT (R4-5)		1.00	0021	01
		STA. 302+70 RT (R2-1)		1.00	0021	01
		C2- ELMWOOD AVENUE AT THURSTON STREET				
		STA. 201+63 (R4-7)		1.00	0021	01
		STA. 202+13 (R4-7)		1.00	0021	01
		C3- ELMWOOD AVENUE AT CARLISLE STREET				
		STA. 301+81 RT (R4-7)		1.00	0021	01
		STA. 302+66 LT (US ROUTE 1)		3.00	0021	01
		C5- WARWICK AVENUE AT BETHEL STREET				
		STA. 504+06 RT (R1-1)		1.00	0021	01
		C7 - PONTIAC AVENUE AT SLATER ROAD				
		STA. 700+47 RT (D3-1)		2.00	0021	01
		STA. 700+56 RT		1.00	0021	01
		STA. 701+81 LT		1.00	0021	01
Item T15.0200 Total:				13.00		
064	T15.9901	RECTANGULAR RAPID FLASHING BEACON (SOLAR)	EACH			
		C1- ELMWOOD AVENUE AT SPOONER STREET				
		101+68 RT		1.00	0021	01

Distribution of Quantities

Project Name - HSIP - Crosswalk & Sign Enhancements

Estimate Name - Addendum No. 1

R.I. Contract No. - 2019-CT-099

FAP Nos: STPG-HSIP (084)

Item No.	Item Code	Description	UM	Qty.	Pay Code	Seq. No.
064	T15.9901 Cont.	101+73 LT		1.00	0021	01
		C2- ELMWOOD AVENUE AT THURSTON STREET				
		202+17 RT		1.00	0021	01
		202+18 LT		1.00	0021	01
		C3- ELMWOOD AVENUE AT CARLISLE STREET				
		301+25 RT		1.00	0021	01
		301+81 LT		1.00	0021	01

Distribution of Quantities

Project Name - HSIP - Crosswalk & Sign Enhancements

Estimate Name - Addendum No. 1

R.I. Contract No. - 2019-CT-099

FAP Nos: STPG-HSIP (084)

Item No.	Item Code	Description	UM	Qty.	Pay Code	Seq. No.
072	T20.2412 Cont.	201+75 - 201+90 STOP LINE		15.00	0021	01
		201+87 - 202+02 STOP LINE		15.00	0021	01
		202+05 CROSSWALK		230.00	0021	01
		C3- ELMWOOD AVENUE AT CARLISLE STREET				
		301+30 - 301+43 CROSSWALK		217.00	0021	01
		301+40 LT - 301 +54 LT STOP BAR		14.00	0021	01
		301+40 LT - 301+71 LT CROSSWALK		105.00	0021	01
		301+43 - 301+58 STOP LINE		14.00	0021	01
		301+44 - 301+73 CROSSWALK		97.00	0021	01
		C4- WARWICK AVENUE AT CAVALCADE BOULEVARD				
		400+91 - 401+04 RT STOP BAR		14.00	0021	01
		401+10 CROSSWALK		74.00	0021	01
		401+25 CROSSWALK		160.00	0021	01
		C5- WARWICK AVENUE AT BETHEL STREET				
		502+74 - 504+02 CROSSWALK		84.00	0021	01
		503+57 CROSSWALK		160.00	0021	01
		C6- POST ROAD AT SHELDON AVENUE				
		600+21 CROSSWALK		170.00	0021	01
		600+50 RT - 600+76 RT CROSSWALK		96.00	0021	01
		600+76 LT - 601+15 LT CROSSWALK		118.00	0021	01
		600+82 - 600+97 LT STOP BAR		15.00	0021	01
		C7- PONTIAC AVENUE AT SLATER ROAD				
		700+70 CROSSWALK		160.00	0021	01
		C8- EAST MAIN ROAD AT QUAKER HILL LANE				

Distribution of Quantities

Project Name - HSIP - Crosswalk & Sign Enhancements

Estimate Name - Addendum No. 1

R.I. Contract No. - 2019-CT-099

FAP Nos: STPG-HSIP (084)

Item No.	Item Code	Description	UM	Qty.	Pay Code	Seq. No.
072	T20.2412 Cont.	801+00 LT - 801+39 LT CROSSWALK		130.00	0021	01

Distribution of Quantities

Project Name - HSIP - Crosswalk & Sign Enhancements

Estimate Name - Addendum No. 1

R.I. Contract No. - 2019-CT-099

FAP Nos: STPG-HSIP (084)

Item No.	Item Code	Description	UM	Qty.	Pay Code	Seq. No.
072	T20.2412 Cont.	801+61 CROSSWALK		224.00	0021	01
Item T20.2412 Total:				2,943.00		
073	T20.2804	4 INCH YELLOW FINAL EPOXY RESIN	LF			
		PAVEMENT MARKINGS				
		A1- ROUTE 102				
		102+24 - 103+00		140.00	0021	01
		103+00 - 106+64		1,456.00	0021	01
		107+03 - 109+23		896.00	0021	01
		110+60 - 112+35		700.00	0021	01
		112+85- 115+23		480.00	0021	01
		115+98 - 120+00		1,628.00	0021	01
		C6- POST ROAD AT SHELDON AVENUE				
		601+21 - 601+28		14.00	0021	01
		C8- EAST MAIN ROAD AT QUAKER HILL LANE				
		801+73 - 801-83		20.00	0021	01
Item T20.2804 Total:				5,334.00		
074	T20.2812	12 INCH YELLOW FINAL EPOXY RESIN	LF			
		PAVEMENT MARKINGS				
		A- ROUTE 102				
		103+00 - 106+63		266.00	0021	01
		107+13 - 109+23		167.00	0021	01
		110+69 - 112+36		144.00	0021	01
		116+00 - 120+00		480.00	0021	01
Item T20.2812 Total:				1,057.00		
075	T20.3401	FINAL EPOXY RESIN PAVEMENT MARKING	EACH			
		SYMBOL - ARROW (STRAIGHT, LEFT, RIGHT OR COMBINED) STANDARD 20.1.0				
		A- ROUTE 102				
		113+00		1.00	0021	01

Distribution of Quantities

Project Name - HSIP - Crosswalk & Sign Enhancements

Estimate Name - Addendum No. 1

R.I. Contract No. - 2019-CT-099

FAP Nos: STPG-HSIP (084)

Item No.	Item Code	Description	UM	Qty.	Pay Code	Seq. No.
075	T20.3401	Cont. 115+12		1.00	0021	01
Item T20.3401 Total:				2.00		

Distribution of Quantities

Project Name - HSIP - Crosswalk & Sign Enhancements

Estimate Name - Addendum No. 1

R.I. Contract No. - 2019-CT-099

FAP Nos: STPG-HSIP (084)

Item No.	Item Code	Description	UM	Qty.	Pay Code	Seq. No.
076	T20.3405	Cont. 802+16		6.00	0021	01
Item T20.3405 Total:				114.00		
077	T20.4506	REMOVE PAVEMENT MARKING LINE - LESS THAN OR EQUAL TO 6 INCHES WIDE	LF			
		A- ROUTE 102				
		102+24 LT - 112+36 LT		2,022.00	0021	01
		102+24 RT - 112+36 RT		2,022.00	0021	01
		C1- ELMWOOD AVENUE AT SPOONER				
		101+46 LT		6.00	0021	01
		101+46 RT		8.00	0021	01
		C2- ELMWOOD AVENUE AT THURSTON				
		201+89 LT		14.00	0021	01
		201+89 RT		14.00	0021	01
		C3- ELMWOOD AVENUE AT CARLISLE				
		301+56 LT		6.00	0021	01
		C7- PONTIAC AVENUE AT SLATER ROAD				
		700+68 - 700+78		20.00	0021	01
Item T20.4506 Total:				4,112.00		
078	T20.4508	REMOVE PAVEMENT MARKING LINE - GREATER THAN 6 INCHES WIDE	LF			
		C1- ELMWOOD AVENUE AT SPOONER STREET				
		101+31 LT - 101+46 LT		14.00	0021	01
		101+46 RT - 101+60 RT		14.00	0021	01
		C2- ELMWOOD AVENUE AT THURSTON				
		201+75 - 201+90 LT		15.00	0021	01
		201+88 - 202+02 RT		15.00	0021	01
		C3- ELMWOOD AVENUE AT CARLISLE STREET				

Distribution of Quantities

Project Name - HSIP - Crosswalk & Sign Enhancements

Estimate Name - Addendum No. 1

R.I. Contract No. - 2019-CT-099

FAP Nos: STPG-HSIP (084)

Item No.	Item Code	Description	UM	Qty.	Pay Code	Seq. No.
078	T20.4508 Cont.	301+36		126.00	0021	01
		301+43 - 301+58 LT		14.00	0021	01
		C4- WARWICH AVENUE AT CAVALCADE				

Distribution of Quantities

Project Name - HSIP - Crosswalk & Sign Enhancements

Estimate Name - Addendum No. 1

R.I. Contract No. - 2019-CT-099

FAP Nos: STPG-HSIP (084)

Item No.	Item Code	Description	UM	Qty.	Pay Code	Seq. No.
078	T20.4508 Cont.	BLVD				
		400+78		179.00	0021	01
		400+87 - 401+27 LT		71.00	0021	01
		400+91 - 401+04 RT		14.00	0021	01
		C5- WARWICK AVENUE AT BETHEL STREET				
		503+71 - 504+02 RT		54.00	0021	01
		504+00		188.00	0021	01
		C6- POST ROAD AT SHELDON AVENUE				
		600+45 - 600+79 RT		96.00	0021	01
		600+71 - 601+18 LT		138.00	0021	01
		600+81 - 600+97 LT		16.00	0021	01
		601+23		104.00	0021	01
		C7- PONTIAC AVENUE AT SLATER ROAD				
		700+94		130.00	0021	01
		C8- EAST MAIN ROAD AT QUAKER HILL AVENUE				
		800+98 - 801+38 LT		134.00	0021	01
		801+00 - 801+22 LT		22.00	0021	01
		801+78		180.00	0021	01
Item T20.4508 Total:				1,524.00		
079	T20.4511	REMOVE PAVEMENT MARKING SYMBOL - EACH ARROW (STRAIGHT, LEFT, RIGHT OR COMBINED)				
		A - ROUTE 102				
		107+18 LT		1.00	0021	01
		108+88 LT		1.00	0021	01
		109+26 LT		1.00	0021	01
		110+54 LT		1.00	0021	01
		110+90 LT		1.00	0021	01
		112+91 LT		1.00	0021	01

Distribution of Quantities

Project Name - HSIP - Crosswalk & Sign Enhancements

Estimate Name - Addendum No. 1

R.I. Contract No. - 2019-CT-099

FAP Nos: STPG-HSIP (084)

Item No.	Item Code	Description	UM	Qty.	Pay Code	Seq. No.
079	T20.4511 Cont.	113+26 LT		1.00	0021	01
		115+21 LT		1.00	0021	01

Distribution of Quantities

Project Name - HSIP - Crosswalk & Sign Enhancements

Estimate Name - Addendum No. 1

R.I. Contract No. - 2019-CT-099

FAP Nos: STPG-HSIP (084)

Item No.	Item Code	Description	UM	Qty.	Pay Code	Seq. No.
079	T20.4511 Cont.	116+10 LT		1.00	0021	01
Item T20.4511 Total:				9.00		
080	T20.4515	REMOVE PAVEMENT MARKING SYMBOL - YIELD LINE TRIANGLE (ALL SIZES)	EACH			
		C7- PONTIAC AVENUE AT SLATER ROAD				
		700+55 RT		8.00	0021	01
		701+80 LT		7.00	0021	01
Item T20.4515 Total:				15.00		
081	T20.4520	REMOVE PAVEMENT MARKING WORD ("ONLY", "STOP", "YIELD", "AHEAD", "XING", "SCHOOL", OR OTHER)	EACH			
		A - ROUTE 102				
		116+76 LT		1.00	0021	01
Item T20.4520 Total:				1.00		
082	922.0100	TEMPORARY CONSTRUCTION SIGNS STANDARD 29.1.0 AND 27.1.1	SF			
		PROJECT WIDE				
		PROJECT WIDE		520.00	0021	01
Item 922.0100 Total:				520.00		

**State of Rhode Island
Department of Administration / Division of Purchases
One Capitol Hill, Providence, Rhode Island 02908-5855
Tel: (401) 574-8100 Fax: (401) 574-8387**

COVID-19 EMERGENCY PROTOCOL FOR BID OPENINGS

RFQ# 7606808 at July 21, 2020 at 1:00 pm

Vendors and the public are advised that due to Covid-19 emergency social distancing requirements bid openings at the Division of Purchases shall be conducted via live streaming on the ZOOM website/application . Vendors and the public shall not be permitted to enter the Division of Purchases to attend bid openings. Vendors and the public who attend bid openings via live streaming shall be required to identify themselves and a record of all such attendees shall be maintained by the Division of Purchases. Vendor bid proposals shall be opened and read aloud at the date and time listed herein. The results of bid solicitations requiring a public copy for public works projects shall be posted on the Division of Purchases website as soon as possible after the bid opening. For RFP solicitations only vendor names shall be read aloud at the opening.

Vendors and the public are further advised that visitor access to the Powers Building at One Capitol Hill, Providence, RI requires pre-screening at the entrance to the building. In accordance with the Governor's Executive Order(s) and Department of Health emergency regulations all visitors to the Powers Building must wear a cloth mask which covers the nose and mouth. Vendors delivering bid proposals to the Division of Purchases should allow sufficient time for the pre-screening process. The Division of Purchases assumes no responsibility for delays caused by the screening process or any other reason. Vendors are solely responsible for on time delivery of bid proposals. The Division of Purchases shall not accept late bids for any reason.

Division of Purchases is inviting you to a scheduled Zoom meeting.

Topic: 7606808

Time: Jul 21, 2020 01:00 PM Eastern Time (US and Canada)

Join Zoom Meeting

<https://zoom.us/j/93208637063?pwd=aOpPaEZKdWRyakF2TVlId1hLQVMwUT09>

Meeting ID: 932 0863 7063

Password: 650640

One tap mobile

+13126266799,,93208637063#,,,,0#,,650640# US (Chicago)

+16465588656,,93208637063#,,,,0#,,650640# US (New York)

Dial by your location

+1 312 626 6799 US (Chicago)

+1 646 558 8656 US (New York)

+1 301 715 8592 US (Germantown)

+1 346 248 7799 US (Houston)

+1 669 900 9128 US (San Jose)

+1 253 215 8782 US (Tacoma)

833 548 0282 US Toll-free

877 853 5247 US Toll-free

888 788 0099 US Toll-free

833 548 0276 US Toll-free

Meeting ID: 932 0863 7063

Password: 650640

Find your local number: <https://zoom.us/j/93208637063?pwd=aOpPaEZKdWRyakF2TVlId1hLQVMwUT09>

JOB SPECIFIC
R.I. CONTRACT NO. 2019-CT-099

CODE 938.1000
PRICE ADJUSTMENTS

DESCRIPTION.

a. Liquid Asphalt Cement.* The Base Price of Liquid Asphalt Cement as required to implement **Subsection 938.03.1** of the Standard Specifications is \$485.00 per ton as of 6/15/2020.

* In the case of modified asphalt binder, this price adjustment provision shall only apply to the neat liquid asphalt component. This provision shall not apply to the modifier component, manufacture, storage, transportation or other associated costs.

b. Diesel Fuel. The Base Price of Diesel Fuel as required to implement **Subsection 938.03.2** of the Standard Specifications is \$1.1721 per gallon as of 6/15/2020.

remain synchronized throughout the duration of the flashing cycle.

The radio systems shall operate from 3.6 VDC to 15VDC. The radio shall be replaceable independently of other components.

The solar panel shall be of a style recommended for use by Tapco for use on 2.5"-square posts (e.g. the 20W Self-Contained Top-of-Pole Cabinet). The solar panel shall be affixed to an aluminum plate and bracket, adjustable at an angle of 45° - 60° to facilitate adjustment for maximum solar collection and optimal battery strength. The Solar Panel Assembly (panel, plate and bracket) shall be mounted on a side of post mount bracket, to facilitate adjustment for maximum solar collection and optimal battery strength.

Warranty

Systems shall have a warranty of 3 years with the warranty period beginning on the date the RRFB's are accepted by the municipality the RRFB locates.

METHOD OF MEASUREMENT: Item Code T15.9901 "Rectangular Rapid Flashing Beacon System (Solar)" and Item Code T15.9902 "Rectangular Rapid Flashing Beacon System (AC)" shall be each measured for payment by the unit of "EACH" for each unit actually installed and fully operating in accordance with the Plans and/or as directed by the Engineer.

BASIS OF PAYMENT: The accepted quantity of Item Code T15.9901 "Rectangular Rapid Flashing Beacon System (Solar)" and Item Code T15.9902 "Rectangular Rapid Flashing Beacon System (AC)" will be paid each for at the contract unit price per each as listed in the proposal. The price so stated constitutes full and complete compensation for all labor, materials, equipment, wires and wiring, power connection, service connection, meter socket with manual bypass, and incidental costs required to complete the work, complete in place and accepted by the Engineer. Handholes and conduit shall be paid for separately.

board.

- A. The WSDS Message Sign shall be constructed per the dimensions, lettering, color and graphics as shown in ATTACHMENT A - SIGN DESIGN REQUIREMENTS.
- B. The LED Display shall be capable of displaying characters sixteen inches (16") high.
- C. The LED Display shall have a maximum width dimension of six (6) feet to be mounted below a D8-2 sign.
- D. The LED Display shall be mounted below the D8-2 sign using the mounting brackets and/or instructions developed by the manufacturer designed for the purpose for attachment to the aluminum sign panels and wood support posts. Follow the manufacturers' installation recommendations regarding affixing the LED Display assembly to the D8-2 sign panel structure.
- E. The Contractor shall submit structural drawings and calculations to demonstrate to the RIDOT that the D8-2 sign shall support the LED Display.
- F. Each WSDS Sign site shall have remote communication capabilities to provide for complete sign operation. Each site shall be furnished with a 4G/LTE wireless modem for communications between the WSDS Sign and the DMS control software.
- G. Contractor shall furnish and install a WSDS sign controller that is minimally NTCIP V3 compliant and that allows the RIDOT to send and display ASCII characters at will via a Verizon cellular connection.
- H. The LED Display shall consist of Red and Green, or Full Color LEDs. Other Display options such as fiber-optic, flip disk, fiber optic/flip disc or LED/flip disc "combination", liquid crystal, or incandescent lamp are **not** acceptable alternatives.
- I. The WSDS sign controller and communications equipment shall be physically hardened to operate in an outdoor, unconditioned environment and within the temperature extremes to be found in New England.
- J. All metal components shall be protected against rust, corrosion and degradation due to the use in a roadway environment. Paint must be lead free, powder coat guaranteed to withstand 5 years of UV Florida exposures as set forth in AAMA 2604-98.
- K. Internal component hardware (nuts, bolts, screws, standoffs, rivets, fasteners, etc.) shall be manufactured from stainless steel, aluminum, nylon, or other durable corrosion- resistant materials suitable for the roadway sign application.

components that may fail during the warranty period, at no additional cost. The Contractor shall transmit to RIDOT updated warranty service dates, from the manufacturer, upon a successful completion of the Final Acceptance Test.

METHOD OF MEASUREMENT:

Item Code T16.9902 “Furnishing, Installing, Warranty, And Validation Testing of Weigh Station Display System (Solar)” and Item Code T16.9903 “Furnishing, Installing, Warranty, And Validation Testing of Weigh Station Display System (AC)” shall be each measured and paid for by EACH; furnished and installed, complete and accepted in place and shall include all labor, equipment and materials; all components of the LED Display, wireless modem, conduit, and software; the solar panel, antenna, solar array support structure; battery, equipment cabinet.

Installation site shall be required to pass a Validation Test before being placed into service. These tests shall be conducted with representatives of the Contractor and RIDOT in attendance, and shall be conducted in accordance with the submitted and RIDOT approved Test Plans and Test Procedures.

BASIS OF PAYMENT:

Item Code T16.9902 “Furnishing, Installing, Warranty, And Validation Testing of Weigh Station Display System (Solar)” and Item Code T16.9903 “Furnishing, Installing, Warranty, And Validation Testing of Weigh Station Display System (AC)” shall be paid for at the contract unit price per EACH. The price so stated shall include full compensations for all materials including the WSDS Message Sign; Solar Power System including battery, controller, solar panel; or AC power system including service connection; 4G/LTE Gateway Cellular Modem and Antenna; Ethernet Switch; Battery Enclosure; Equipment Cabinet; grounding; surge protection; switch; mounting structure for sign; wood pole for solar panel; handhole, pads for cabinet and enclosure as necessary; mounting hardware for sign, solar panel, and cabinet; power and communications cables and conduit; excavation, back fill, and all other materials required to complete the WSDS. Payment shall also include all installation costs, validation testing costs, warranties, and work incidental to complete the WSDS in place and accepted by the Engineer.

The D8-2 sign panel and post shall be paid for separately.

PROPOSAL

Project Name - HSIP - Crosswalk & Sign Enhancements

Estimate Name - Addendum No. 1

R.I. Contract No. - 2019-CT-099

FAP Nos - STPG-HSIP (084)

PROPOSAL

Project Name - HSIP - Crosswalk & Sign Enhancements

Estimate Name - Addendum No. 1

R.I. Contract No. - 2019-CT-099

FAP Nos: STPG-HSIP (084)

THE UNDERSIGNED BIDDER HAS CAREFULLY EXAMINED THE SITE OF THE WORK DESCRIBED HEREIN, HAS BECOME FAMILIAR WITH LOCAL CONDITIONS AND THE CHARACTER AND EXTENT OF THE WORK, HAS CAREFULLY EXAMINED THE PLANS, THE STATE OF RHODE ISLAND STANDARD SPECIFICATIONS FOR ROAD AND BRIDGE CONSTRUCTION, WITH LATEST REVISIONS AND SUPPLEMENTS TO DATE OF CONTRACT, WHICH ARE ACKNOWLEDGED TO BE A PART OF THIS PROPOSAL, THE SPECIAL PROVISIONS, THE PROPOSAL FORM, THE FORM OF CONTRACT AGREEMENT, AND THE FORM OF CONTRACT BOND, AND THOROUGHLY UNDERSTANDS THEIR STIPULATIONS, REQUIREMENTS AND PROVISIONS.

THE UNDERSIGNED BIDDER HAS DETERMINED THE QUALITY AND QUANTITY OF EQUIPMENT AND MATERIALS REQUIRED, HAS INVESTIGATED THE LOCATION AND DETERMINED THE SOURCES OF SUPPLY OF MATERIALS REQUIRED, HAS INVESTIGATED LABOR CONDITIONS, AND HAS ARRANGED FOR THE CONTINUOUS PROSECUTION OF THE WORK HEREIN DESCRIBED.

THE UNDERSIGNED BIDDER HEREBY AGREES TO BE BOUND BY THE AWARD OF THE CONTRACT AND IF AWARDED THE CONTRACT ON THIS PROPOSAL TO EXECUTE WITHIN TEN (10) DAYS AFTER NOTICE OF AWARD THE REQUIRED CONTRACT AGREEMENT AND THE REQUIRED CONTRACT BOND, OF WHICH CONTRACT THIS PROPOSAL, THE PLANS FOR THE WORK, AND THE SPECIFICATIONS AS ABOVE INDICATED, SHALL BE A PART.

THE UNDERSIGNED BIDDER FURTHER AGREES TO PROVIDE ALL NECESSARY EQUIPMENT, TOOLS, LABOR, INCIDENTALS, AND OTHER MEANS OF CONSTRUCTION TO DO ALL THE WORK AND FURNISH ALL MATERIALS OF THE SPECIFIED REQUIREMENTS WHICH ARE NECESSARY TO COMPLETE THE WORK IN ACCORDANCE WITH THE PROPOSAL, THE PLANS AND THE SPECIFICATIONS AND AGREES TO ACCEPT THEREFORE, AS PAYMENT IN FULL, THE UNIT PRICES FOR THE VARIOUS ITEMS DESCRIBED IN THE SPECIFICATIONS AND SET FORTH IN THE PROPOSAL. ANY "EXTRA" OR "FORCE ACCOUNT WORK" WILL BE PAID FOR AS SET FORTH IN SUBSECTION 109.04, DIFFERING SITE CONDITIONS, CHANGES, EXTRA WORK AND FORCE ACCOUNT WORK, OF THE STANDARD SPECIFICATIONS AND THE UNDERSIGNED BIDDER HEREBY AGREES TO ACCEPT PAYMENT THEREFORE AS STATED THEREIN.

THE BIDDER UNDERSTANDS THAT THE QUANTITIES OF WORK SHOWN HEREIN ARE APPROXIMATE ONLY AND ARE SUBJECT TO INCREASE OR DECREASE AND AGREES THAT ALL QUANTITIES OF WORK, WHETHER INCREASED OR DECREASED, ARE TO BE PERFORMED AT THE UNIT PRICES STATED IN THE FOLLOWING ESTIMATE OF QUANTITIES AND SCHEDULE OF PRICES FOR THE WORK DESCRIBED, SUBJECT HOWEVER, TO STIPULATIONS IN SUBSECTION 104.02, CHANGES IN THE CONTRACT, OF THE STANDARD SPECIFICATIONS.

SPECIAL NOTICE

PROPOSAL

Project Name - HSIP - Crosswalk & Sign Enhancements

Estimate Name - Addendum No. 1

R.I. Contract No. - 2019-CT-099

FAP Nos - STPG-HSIP (084)

All items in the Proposal must have a unit bid price in words and figures. All unit bid prices must be extended. Bids will not be accepted if they contain no unit price for an item or if they contain zero in words and figures as the unit price bid.

The minimum acceptable bid price for:

Code 914.5010, FLAGPERSONS is Forty Nine Dollars And Fifty Cents (\$49.50) per MHRS

Code 914.5020, FLAGPERSONS - OVERTIME is Sixty Three Dollars And Fifty Cents (\$63.50) per MHRS

Code 928.9901, TRUCK MOUNTED ATTENUATOR WITH FLASHING ARROW BOARD is Seventy Five Dollars And No Cents (\$75.00) per MHRS

Code 937.0200, MAINTENANCE AND MOVEMENT TRAFFIC PROTECTION is One Hundred Thousand Dollars And No Cents (\$100,000.00) per LS

Code 943.0200, TRAINEE MAN-HOURS is Six Dollars And No Cents (\$6.00) per MHRS

The only acceptable bid price for:

Items preceded with the letter "S" in the proposal are Specialty Items.

Proposal Items

Project Name - HSIP - Crosswalk & Sign Enhancements

Estimate Name - Addendum No. 1

R.I. Contract No. - 2019-CT-099

FAP Nos - STPG-HSIP (084)

.....
 Note: The UNIT PRICE for each Item must be written in words and figures.

No.	Item Code	Quantity	Description	Unit	Unit Bid Price \$0.00	Amount (PxQ) \$0.00
001	201.0321	3,000.00	CLEARING AND GRUBBING			
	AT			SY		
002	201.0401	387.00	REMOVE AND DISPOSE GRANITE CURB			
	AT			LF		
003	201.0402	183.00	REMOVE AND DISPOSE CONCRETE CURB			
	AT			LF		
004	201.0403	330.00	REMOVE AND DISPOSE SIDEWALKS			
	AT			SY		
005	201.0409	85.00	REMOVE AND DISPOSE FLEXIBLE PAVEMENT			
	AT			SY		
006	201.0415	350.00	REMOVE AND DISPOSE GUARDRAIL AND POST ALL TYPES			
	AT			LF		
007	201.0421	36.00	REMOVE AND DISPOSE BITUMINOUS CURB			
	AT			LF		

Proposal Items

Project Name - HSIP - Crosswalk & Sign Enhancements

Estimate Name - Addendum No. 1

R.I. Contract No. - 2019-CT-099

FAP Nos - STPG-HSIP (084)

.....
 Note: The UNIT PRICE for each Item must be written in words and figures.

No.	Item Code	Quantity	Description	Unit	Unit Bid Price \$0.00	Amount (PxQ) \$0.00
008	201.0601	10.00	REMOVE AND DISPOSE GROUND MOUNTED SIGNS			
	AT			EACH		
009	201.0610	31.00	REMOVE AND DISPOSE DIRECTIONAL, WARNING, REGULATORY, SERVICE, AND STREET SIGNS			
	AT			EACH		
010	201.9901	1.00	REMOVE AND RELOCATE PRIVATE SIGN			
	AT			EACH		
011	202.0100	118.00	EARTH EXCAVATION			
	AT			CY		
012	202.0201	21.00	ROCK EXCAVATION MECHANICAL			
	AT			CY		
013	202.0700	20.00	COMMON BORROW			
	AT			CY		
014	204.0100	4,175.00	TRIMMING AND FINE GRADING			
	AT			SY		

Proposal Items

Project Name - HSIP - Crosswalk & Sign Enhancements

Estimate Name - Addendum No. 1

R.I. Contract No. - 2019-CT-099

FAP Nos - STPG-HSIP (084)

 Note: The UNIT PRICE for each Item must be written in words and figures.

No.	Item Code	Quantity	Description	Unit	Unit Bid Price \$0.00	Amount (PxQ) \$0.00
015	206.0312	2,700.00	COMPOST FILTER SOCK 12 INCH DIAMETER			
AT				LF		
016	209.0200	11.00	SACK INSERT CATCH BASIN INLET PROTECTION			
AT				EACH		
017	212.2100		ItemDeleted			
AT				LS		
018	213.0100	350.00	PLACEMENT OF MILLINGS BENEATH GUARDRAIL			
AT				LF		
019	302.0100	53.00	GRAVEL BORROW SUBBASE COURSE			
AT				CY		
020	401.1003	16.00	CLASS 19.0 HMA FOR PATCHING			
AT				TON		
021	403.0300	83.00	ASPHALT EMULSION TACK COAT			
AT				SY		

Proposal Items

Project Name - HSIP - Crosswalk & Sign Enhancements

Estimate Name - Addendum No. 1

R.I. Contract No. - 2019-CT-099

FAP Nos - STPG-HSIP (084)

.....
 Note: The UNIT PRICE for each Item must be written in words and figures.

No.	Item Code	Quantity	Description	Unit	Unit Bid Price \$0.00	Amount (PxQ) \$0.00
022	603.1000	21.00	CONTROLLED LOW STRENGTH MATERIAL			
AT				CY		
023	707.0900	1.00	ADJUST MANHOLES TO GRADE			
AT				EACH		
024	901.0101	350.00	GUARDRAIL STEEL BEAM SINGLE FACE EARTH AND ASPHALT			
AT				LF		
025	905.0110	27.00	PORTLAND CEMENT SIDEWALK MONOLITHIC STANDARD 43.1.0			
AT				CY		
026	906.0119	2.00	3' GRANITE TRANSITION CURB STANDARD 7.3.1			
AT				EACH		
027	906.0120	12.00	GRANITE WHEELCHAIR RAMP CURB STANDARDS 7.3.3, 43.3.0 AND 43.3.1			
AT				EACH		
028	906.0130	3.00	GRANITE RAMP STONE STRAIGHT STANDARD 7.3.9			
AT				EACH		

Proposal Items

Project Name - HSIP - Crosswalk & Sign Enhancements

Estimate Name - Addendum No. 1

R.I. Contract No. - 2019-CT-099

FAP Nos - STPG-HSIP (084)

.....
 Note: The UNIT PRICE for each Item must be written in words and figures.

No.	Item Code	Quantity	Description	Unit	Unit Bid Price \$0.00	Amount (PxQ) \$0.00
029	906.0131	4.00	GRANITE RAMP STONE CIRCULAR STANDARD 7.3.9			
	AT			EACH		
030	906.0210	68.00	CEMENT CONCRETE CURB PRECAST STRAIGHT STANDARD 7.1.0			
	AT			LF		
031	906.0250	13.00	PRECAST CONCRETE WHEELCHAIR RAMP CURB STANDARDS 7.1.3, 43.3.0 AND 43.3.1			
	AT			EACH		
032	906.0260	8.00	PRECAST CONCRETE RAMP STONE 12-INCH STRAIGHT STANDARD 7.1.9			
	AT			EACH		
033	906.0261	1.00	PRECAST CONCRETE RAMP STONE 12-INCH CIRCULAR STANDARD 7.1.9			
	AT			EACH		
034	914.5010	500.00	FLAGPERSONS			
	AT			MHRS		
035	914.5020	50.00	FLAGPERSONS - OVERTIME			
	AT			MHRS		

Proposal Items

Project Name - HSIP - Crosswalk & Sign Enhancements

Estimate Name - Addendum No. 1

R.I. Contract No. - 2019-CT-099

FAP Nos - STPG-HSIP (084)

.....
 Note: The UNIT PRICE for each Item must be written in words and figures.

No.	Item Code	Quantity	Description	Unit	Unit Bid Price \$0.00	Amount (PxQ) \$0.00
036	919.0101	6.00	TEST PITS			
	AT			EACH		
037	923.0105	7,000.00	DRUM BARRICADE STANDARD 26.2.0			
	AT			BDAY		
038	923.0125	16.00	PLASTIC PIPE TYPE III BARRICADE STANDARD 26.3.1			
	AT			EACH		
039	923.0200	50.00	FLUORESCENT TRAFFIC CONES STANDARD 26.1.0			
	AT			EACH		
040	928.9901	320.00	TRUCK MOUNTED ATTENUATOR WITH FLASHING ARROW BOARD			
	AT			MHRS		
041	929.0110	12.00	FIELD OFFICE			
	AT			PMO		
042	932.0200	765.00	FULL-DEPTH SAWCUT OF BITUMINOUS PAVEMENT			
	AT			LF		

Proposal Items

Project Name - HSIP - Crosswalk & Sign Enhancements

Estimate Name - Addendum No. 1

R.I. Contract No. - 2019-CT-099

FAP Nos - STPG-HSIP (084)

 Note: The UNIT PRICE for each Item must be written in words and figures.

No.	Item Code	Quantity	Description	Unit	Unit Bid Price \$0.00	Amount (PxQ) \$0.00
043	932.0210	765.00	FULL DEPTH SAWCUT OF BITUMINOUS PAVEMENT AND RIGID BASE			
	AT			LF		
044	932.0220	115.00	FULL DEPTH SAWCUT OF BITUMINOUS SIDEWALK/DRIVEWAY			
	AT			LF		
045	932.0230	191.00	FULL DEPTH SAWCUT OF PORTLAND CEMENT CONCRETE SIDEWALK/DRIVEWAY			
	AT			LF		
046	936.0100	1.00	MOBILIZATION AND DEMOBILIZATION			
	AT			LS		
047	937.0200	1.00	MAINTENANCE AND MOVEMENT TRAFFIC PROTECTION			
	AT			LS		
048	942.0200	128.00	DETECTABLE WARNING PANEL STANDARD 48.1.0			
	AT			SF		
049	943.0200	1,000.00	TRAINEE MAN-HOURS			
	AT			MHRS		

Proposal Items

Project Name - HSIP - Crosswalk & Sign Enhancements

Estimate Name - Addendum No. 1

R.I. Contract No. - 2019-CT-099

FAP Nos - STPG-HSIP (084)

.....
 Note: The UNIT PRICE for each Item must be written in words and figures.

No.	Item Code	Quantity	Description	Unit	Unit Bid Price \$0.00	Amount (PxQ) \$0.00
050	L01.0102	102.00	LOAM BORROW 4 INCHES DEEP			
	AT			SY		
051	L01.0104	3,000.00	PLANTABLE SOIL 4 INCHES DEEP			
	AT			SY		
052	L02.0101	3,192.00	GENERAL HIGHWAY SEEDING (TYPE 1)			
	AT			SY		
053	L08.0109	24.00	TREE TRIMMING			
	AT			MHRS		
054	T04.5001		ItemDeleted			
	AT			LF		
055	T04.5305		ItemDeleted			
	AT			LF		
056	T05.0100	6.00	PRECAST TYPE A HANDHOLE STANDARD 18.2.0			
	AT			EACH		

Proposal Items

Project Name - HSIP - Crosswalk & Sign Enhancements

Estimate Name - Addendum No. 1

R.I. Contract No. - 2019-CT-099

FAP Nos - STPG-HSIP (084)

.....
 Note: The UNIT PRICE for each Item must be written in words and figures.

No.	Item Code	Quantity	Description	Unit	Unit Bid Price \$0.00	Amount (PxQ) \$0.00
057	T06.1020		ItemDeleted			
AT				LF		
058	T06.2020		ItemDeleted			
AT				LF		
059	T06.5430		ItemDeleted			
AT				LF		
060	T11.9901	1.00	TRAFFIC SIGNAL CONSTRUCTION LOCATION A - VICTORY HIGHWAY (ROUTE 102) BETWEEN BREAKHEART HILL ROAD AND I-95, WEST GREENWICH			
AT				LS		
061	T12.9150	3.00	METER SOCKET W/MANUAL BY-PASS			
AT				EACH		
062	T15.0100	1,063.50	DIRECTIONAL REGULATORY AND WARNING SIGNS			
AT				SF		
063	T15.0200	13.00	REMOVE AND RELOCATE DIRECTIONAL REGULATORY AND WARNING SIGN			
AT				EACH		

Proposal Items

Project Name - HSIP - Crosswalk & Sign Enhancements

Estimate Name - Addendum No. 1

R.I. Contract No. - 2019-CT-099

FAP Nos - STPG-HSIP (084)

.....
 Note: The UNIT PRICE for each Item must be written in words and figures.

No.	Item Code	Quantity	Description	Unit	Unit Bid Price \$0.00	Amount (PxQ) \$0.00
064	T15.9901	13.00	RECTANGULAR RAPID FLASHING BEACON (SOLAR)			
	AT			EACH		
065	T15.9902	3.00	RECTANGULAR RAPID FLASHING BEACON SYSTEM (AC)			
	AT			EACH		
066	T16.0100	870.00	GROUND MOUNTED PRIMARY DIRECTIONAL SIGN PANELS EXTRUDED ALUMINUM			
	AT			SF		
067	T16.9901	40.00	GROUND MOUNTED PRIMARY DIRECTIONAL SIGN POST - STEEL BREAKAWAY			
	AT			EACH		
068	T16.9902	3.00	FURNISHING, INSTALLING, WARRANTY, AND VALIDATION TESTING OF WEIGHSTATION DISPLAY SYSTEM (SOLAR)			
	AT			EACH		
069	T16.9903	1.00	FURNISHING, INSTALLING, WARRANTY, AND VALIDATION TESTING OF WEIGH STATION DISPLAY SYSTEM (AC)			
	AT			EACH		
070	T18.0100	37.00	FLEXIBLE DELINEATOR POST			
	AT			EACH		

Proposal Items

Project Name - HSIP - Crosswalk & Sign Enhancements

Estimate Name - Addendum No. 1

R.I. Contract No. - 2019-CT-099

FAP Nos - STPG-HSIP (084)

 Note: The UNIT PRICE for each Item must be written in words and figures.

No.	Item Code	Quantity	Description	Unit	Unit Bid Price \$0.00	Amount (PxQ) \$0.00
071	T20.2406	2,504.00	6 INCH WHITE FINAL EPOXY RESIN PAVEMENT MARKINGS			
AT				LF		
072	T20.2412	2,943.00	12 INCH WHITE FINAL EPOXY RESIN PAVEMENT MARKINGS			
AT				LF		
073	T20.2804	5,334.00	4 INCH YELLOW FINAL EPOXY RESIN PAVEMENT MARKINGS			
AT				LF		
074	T20.2812	1,057.00	12 INCH YELLOW FINAL EPOXY RESIN PAVEMENT MARKINGS			
AT				LF		
075	T20.3401	2.00	FINAL EPOXY RESIN PAVEMENT MARKING SYMBOL - ARROW (STRAIGHT, LEFT, RIGHT OR COMBINED) STANDARD 20.1.0			
AT				EACH		
076	T20.3405	114.00	FINAL EPOXY RESIN PAVEMENT MARKING SYMBOL - YIELD LINE TRIANGLE (ALL SIZES)			
AT				EACH		
077	T20.4506	4,112.00	REMOVE PAVEMENT MARKING LINE - LESS THAN OR EQUAL TO 6 INCHES WIDE			
AT				LF		

Proposal Items

Project Name - HSIP - Crosswalk & Sign Enhancements

Estimate Name - Addendum No. 1

R.I. Contract No. - 2019-CT-099

FAP Nos - STPG-HSIP (084)

 Note: The UNIT PRICE for each Item must be written in words and figures.

No.	Item Code	Quantity	Description	Unit	Unit Bid Price \$0.00	Amount (PxQ) \$0.00
078	T20.4508	1,524.00	REMOVE PAVEMENT MARKING LINE - GREATER THAN 6 INCHES WIDE			
AT				LF		
079	T20.4511	9.00	REMOVE PAVEMENT MARKING SYMBOL - ARROW (STRAIGHT, LEFT, RIGHT OR COMBINED)			
AT				EACH		
080	T20.4515	15.00	REMOVE PAVEMENT MARKING SYMBOL - YIELD LINE TRIANGLE (ALL SIZES)			
AT				EACH		
081	T20.4520	1.00	REMOVE PAVEMENT MARKING WORD ("ONLY", "STOP", "YIELD", "AHEAD", "XING", "SCHOOL", OR OTHER)			
AT				EACH		
082	922.0100	520.00	TEMPORARY CONSTRUCTION SIGNS STANDARD 29.1.0 AND 27.1.1			
AT				SF		

FINAL TOTAL IS:

Revised: 2/19/2002

Total or gross sum of bid for Rhode Island Contract Number: 2019-CT-099

Federal-Aid Project Number(s): STPG-HSIP (084)

WRITTEN IN WORDS:

The undersigned bidder declares that this Proposal is made without connection with any other person or persons making proposals for the same work, and is in all respects fair and without collusion or fraud. The undersigned bidder submits herewith, a proposal guarantee in the form of a bid bond in favor of the State of Rhode Island in the amount of 5% of the total or gross sum of the bid and agrees and consents that the proposal guarantee shall be forfeited to the State as liquidated damages if the required contract agreement and contract bond are not executed within ten(10) days of the notice of award. All surety companies must be listed with The Department of the Treasury, Fiscal Services, Circular 570, (Latest Revision published by The Federal Register). The State reserves the right to retain the surety of all bidders until the successful bidder enters into the Contract or until such time as the award or cancellation of the Contract is announced at which point Sureties will be returned to all bidders by the State of Rhode Island, Office of Purchases. The undersigned bidder further agrees, if awarded the contract on this proposal, to begin work within ten (10) calendar days after the date of execution of the contract unless otherwise specified under special provisions or permitted by the Engineer, and further agrees to complete the work on or before the dates outlined in the Contract Documents.

COMPLETION DATE(S)

DESCRIPTION	DATE
Substantial Completion Date	August 27, 2021
Bid-Opening Date	July 21, 2020
Advertise Date	June 30, 2020

THE BIDDER ACKNOWLEDGES RECEIPT OF THE FOLLOWING:

ADDENDA	DATE POSTED	DOCUMENT(S)	PAGE
NO.1		Status Certification for: Debarment, Eligibility, Indictments, Convictions or Civil Judgements	
		Anti-Collusion Certificate	
		DBE Affirmative Action Certification	
		Disclosure of Lobbying Activities	

Total or gross sum of bid for Rhode Island Contract Number: 2019-CT-099

Federal-Aid Project Number(s): STPG-HSIP (084)

Whoever, being an officer, agent, or employee of the United States, or of any State, or Territory, or whoever, whether a person, association, firm, or corporation, knowingly makes any false statement, false representation, or false report as to the character, quality, quantity, or cost of the material used or to be used, or the quantity or quality of the work performed or to be performed, or the costs thereof in connection with the submission of plans, maps, specifications, contracts, or costs of construction of any highway or related project submitted for approval to the Secretary of Transportation; or Whoever, knowingly makes any false statement, false representation, false report, or false claim with respect to the character, quality, quantity, or cost of any work performed or to be performed, or materials furnished or to be furnished, in connection with the construction of any highway or related project approved by the Secretary of Transportation; or Whoever, knowingly makes any false statement or false representation as to a material fact in any statement, certificate, or report submitted pursuant to the provisions of the Federal-aid Road Act approved July 11, 1916 (39 Stat. 355), as amended and supplemented, Shall be fined not more than \$10,000 or imprisoned not more than five years, or both. By signing here the signee agrees that the disk submitted is the same as the paper submitted and that any discrepancies may result in disqualification of the bid.

BEING EITHER A (INDIVIDUAL, PARTNERSHIP,
(OR CORPORATION INCORPORATED)
(UNDER THE LAWS OF ANY STATE)
(IN THE UNITED STATES OF AMERICA)

Contractor

COMPOSED OF OFFICERS, PARTNERS
OR OWNER, AS FOLLOWS.

President

Vice-President

Secretary

Treasurer

Address

CERTIFICATION SUMMARY: I hereby certify that I have read all of the above requirements and understand that it affects the acceptability of my bid(s).

Name of Signatore - Title

Date