

October 11, 2019

STATE OF RHODE ISLAND AND PROVIDENCE PLANTATION
DEPARTMENT OF ADMINISTRATION

DIVISION OF PURCHASES BID NO. 7598951

RHODE ISLAND DEPARTMENT OF TRANSPORTATION

RHODE ISLAND CONTRACT NO.2019-CB-068

FEDERAL-AID PROJECT NO. FAP Nos: BHO-PRES(010)

Bridge Group 16B - FOS, JOH, PVD, SCI

Various locations in Foster, Johnston, Providence, and Scituate

CITY/TOWN OF Foster, Providence, Scituate, Johnston

COUNTY OF PROVIDENCE

NOTICE TO PROSPECTIVE BIDDERS

ADDENDUM NO. 3 Prospective bidders and all concerned are hereby notified of the following changes in the Plans, Specifications, Proposal and Distribution of Quantities for this contract. These changes shall be incorporated in the Plans, Specifications, Proposal and Distribution of Quantities, and shall become an integral part of the Contract Documents.

A. Distribution of Quantities

1. Index Pages

Delete page Index 1(R-1) and Index 2(R-1) in its entirety and replace with revised pages Index 1(R-2) and Index 2(R-2) attached to this Addendum No. 3. Items highlighted in bold have been reordered, added or deleted to the contract.

2. Pages 4, 5, 6, and 8

Delete Pages 4, 5, 6, and 8 in their entirety and replace with revised pages 2(R-2), 4(R-2), 5(R-2), 6(R-2), and 8(R-1) attached to this Addendum No. 3. Items in bold have been revised due to quantity changes or group location changes.

B. Plans

1. SHEET NO. 23 – Bridge No. 146 Route 44 over Woonasquatucket River; Johnston, RI BRIDGE SCUPPER MODIFICATION

Remove and replace Sheet 23(R-1) in its entirety with Sheet 23(R-2) attached to this Addendum No. 3. This sheet has been revised.



RI Department of Transportation

Administrator, Division of Project Management

ADDENDUM NO. 3

ATTACHMENTS

Table of Contents - Distribution of Quantities

Project Name - Bridge Group 16B - FOS, JOH, PVD, SCI

Estimate Name - Addendum to BGL6B - Addendum 3

R.I. Contract No. - 2019-CB-068

FAP Nos: BHO-PRES(010)

ItemCode	Description	Page
201.0321	CLEARING AND GRUBBING	1
201.0402	REMOVE AND DISPOSE CONCRETE CURB	1
201.0403	REMOVE AND DISPOSE SIDEWALKS	1
201.0415	REMOVE AND DISPOSE GUARDRAIL AND POST ALL TYPES	1
201.9901	REMOVE AND DISPOSE OF EXISTING JOINT FILLER	1
202.0300	UNCLASSIFIED EXCAVATION	1
202.0800	GRAVEL BORROW	2
203.0400	STRUCTURAL EXCAVATION UNCLASSIFIED	2
206.9901	CATCH BASIN INLET PROTECTION	2
212.2100	MAINTENANCE AND CLEANING OF EROSION AND POLLUTION CONTROLS	2
401.2000	CLASS 12.5 HMA	2
401.2003	CLASS 12.5 HMA FOR PATCHING	3
401.9901	MODIFIED CLASS 9.5 HMA FOR BRIDGE DECKS	3
401.9902	REMOVE AND REPLACE OVERLAY AND WATERPROOF MEMBRANE BRIDGE NO. 274	3
403.0300	ASPHALT EMULSION TACK COAT	3
501.0103	PORTLAND CEMENT CONCRETE BASE	3
708.9041	CLEANING CATCH BASINS ALL TYPES AND SIZES	4
713.8269	ADJUST WATER GATE BOXES TO GRADE	4
713.8300	ADJUST GAS GATE BOXES TO GRADE	4
800.9901	MISCELLANEOUS BRIDGE REPAIRS	4
803.0300	PARTIAL REMOVAL AND DISPOSAL OF EXISTING CONCRETE MASONRY	4
803.9901	REMOVE AND DISPOSE EXISTING DECK JOINT	4
807.0350	POINTING & GROUTING MASONRY	5
807.9901	MASONRY VOID REPAIR	5
808.0322	CONCRETE SUBSTRUCTURE CLASS HP 3/4'' END POSTS	5
808.1200	CONCRETE SUPERSTRUCTURE CLASS HP 3/4''	5
808.1642	PREFORMED POLYETHYLENE FOAM JOINT FILLER 1''	5
808.1644	PREFORMED POLYETHYLENE FOAM JOINT FILLER 1-1/2''	6
808.1675	POLYURETHANE ELASTOMERIC JOINT SEALANT	6
810.0210	GALVANIZED BAR REINFORCEMENT GRADE 60	6
811.1400	THERMOPLASTIC PIPE 2 INCH COMMERCIAL GRADE PLASTIC	6
813.0210	HEAT-APPLIED PREFABRICATED MEMBRANE	6
817.2112	REPAIRS TO STRUCTURE CONCRETE MASONRY - PATCHING MORTAR	7
817.2142	REPAIRS TO STRUCTURE CONCRETE MASONRY - FORM AND CAST IN PLACE CONCRETE	7
817.9901	REPAIRS TO PRESTRESSED CONCRETE GIRDERS	7
818.2010	PORTLAND CEMENT CONCRETE DECK REPAIRS (FULL DEPTH REMOVAL)	7
819.0800	DRILL AND GROUT REINFORCING DOWELS	8
820.9901	HIGH PRESSURE WATER CLEANING - BRIDGE NO. 274	8
820.9902	HIGH PRESSURE WATER CLEANING OF HISTORIC BRIDGE STRUCTURE - BRIDGE NO. 295	8
820.9903	HIGH PRESSURE WATER CLEANING - BRIDGE NO. 605	8
820.9904	HIGH PRESSURE WATER CLEANING - BRIDGE NO. 61101	8
820.9905	HIGH PRESSURE WATER CLEANING - BRIDGE NO. 61121	9
820.9906	CONCRETE SURFACE TREATMENT (PROTECTIVE COATING)	9
820.9907	CONCRETE SURFACE TREATMENT (ASR COATING)	9
821.1690	SAW & SEALING JOINTS IN BITUMINOUS CONCRETE PAVEMENT	9
823.1750	ASPHALTIC EXPANSION JOINT SYSTEM	9
823.1760	STRIP SEAL EXPANSION JOINT ASSEMBLIES	10
824.9901	STEEL GIRDER REPAIRS BRIDGE NO. 274	10
824.9902	STEEL GIRDER REPAIRS BRIDGE NO. 61101	10
824.9903	STEEL GIRDER REPAIRS BRIDGE NO 61121	10
825.9901	REPAINTING EXISTING STRUCTURAL STEEL - BRIDGE NO. 274	10

Table of Contents - Distribution of Quantities

Project Name - Bridge Group 16B - FOS, JOH, PVD, SCI

Estimate Name - Addendum to BGL6B - Addendum 3

R.I. Contract No. - 2019-CB-068

FAP Nos: BHO-PRES(010)

ItemCode	Description	Page
825.9902	REPAINTING STRUCTURAL STEEL - BRIDGE NO. 61101	10
825.9903	REPAINTING EXISTING STRUCTURAL STEEL - BRIDGE NO 61121	11
826.0100	CONTAINMENT, COLLECTION, STORAGE AND DISPOSAL OF DEBRIS AND SPENT MATERIALS	11
826.0200	PERSONNEL PROTECTION DURING PAINTING AND CLEANING OPERATIONS	11
833.0400	GRANITE IDENTIFICATION TABLETS	11
835.0210	DECK SCUPPERS SINGLE COMPLETE WITH DOWNSPOUT	11
836.0100	STRUCTURAL CONCRETE CRACK REPAIR BY EPOXY-RESIN BASE ADHESIVE INJECTION	12
839.0100	PARTIAL-DEPTH REMOVAL AND DISPOSAL OF BITUMINOUS PAVEMENT FROM CONCRETE BRIDGE DECKS	12
839.0200	FULL DEPTH REMOVAL AND DISPOSAL OF BITUMINOUS PAVEMENT FROM CONCRETE BRIDGE DECKS	12
842.0100	ANTI-GRAFFITI COATING	12
901.0161	GUARDRAIL STEEL BEAM POST (IN EARTH AND ASPHALT)	13
901.0193	GUARDRAIL STEEL BEAM SINGLE FACE STANDARD 34.2.0	13
901.0197	GUARDRAIL CONNECTION TO EXISTING ENDPPOST APPROACH END SECTION, STANDARD 34.3.5	13
903.0410	TEMPORARY CHAIN LINK FENCE	13
905.0110	PORTLAND CEMENT SIDEWALK MONOLITHIC STANDARD 43.1.0	13
905.0140	BITUMINOUS SIDEWALK STANDARD 43.2.0	13
906.0110	GRANITE CURB, QUARRY SPLIT STRAIGHT, STANDARD 7.3.0	14
906.0240	CEMENT CONCRETE CURB TYPES 10'' X 10'' STRAIGHT	14
906.0700	** ITEM DELETED **	14
907.0100	WATER FOR DUST CONTROL	14
914.5010	FLAGPERSONS	14
914.5020	FLAGPERSONS - OVERTIME	15
920.0055	PLACED STONE RIPRAP R-3, R-4, R-5 STANDARD 8.3.0	15
920.0140	BEDDING FOR RIPRAP FS-3 STANDARD 8.3.0	15
920.0200	FILTER FABRIC FOR RIP-RAP	15
922.0100	TEMPORARY CONSTRUCTION SIGNS STANDARD 29.1.0 AND 27.1.1	15
923.0105	DRUM BARRICADE STANDARD 26.2.0	16
923.0125	PLASTIC PIPE TYPE III BARRICADE STANDARD 26.3.1	16
923.0200	FLUORESCENT TRAFFIC CONES STANDARD 26.1.0	16
924.0113	ADVANCE WARNING ARROW PANEL	16
925.0112	PORTABLE CHANGEABLE MESSAGE SIGN	16
926.0140	REFLECTIVE DELINEATORS FOR TEMPORARY CONCRETE BARRIERS	17
926.9901	TEMPORARY IMPACT ATTENUATOR	17
926.9902	REMOVE AND RESET TEMPORARY IMPACT ATTENUATOR	17
926.9903	RELOCATE PRECAST MEDIAN BARRIER FOR TEMPORARY TRAFFIC CONTROL	17
926.9904	UNANCHORED BARRIER FOR TEMPORARY TRAFFIC CONTROL	17
928.9901	TRUCK MOUNTED ATTENUATOR WITH TRUCK MOUNTED FLASHING ARROW	17
929.0110	FIELD OFFICE	18
931.0110	CLEANING AND SWEEPING PAVEMENT	18
932.0200	FULL-DEPTH SAWCUT OF BITUMINOUS PAVEMENT	18
936.0110	MOBILIZATION	18
937.0200	MAINTENANCE AND MOVEMENT TRAFFIC PROTECTION	18
L09.9901	SELECTIVE CLEARING	19
T20.0706	6 INCH WHITE WATERBORNE PAINT PAVEMENT MARKINGS	19
T20.0712	12 INCH WHITE WATERBORNE PAINT PAVEMENT MARKINGS	19

Table of Contents - Distribution of Quantities

Project Name - Bridge Group 16B - FOS, JOH, PVD, SCI

Estimate Name - Addendum to BGL6B - Addendum 3

R.I. Contract No. - 2019-CB-068

FAP Nos: BHO-PRES(010)

ItemCode	Description	Page
T20.0906	6 INCH YELLOW WATERBORNE PAINT PAVEMENT MARKINGS	19
T20.2406	6 INCH WHITE FINAL EPOXY RESIN PAVEMENT MARKINGS	19
T20.2412	12 INCH WHITE FINAL EPOXY RESIN PAVEMENT MARKINGS	19
T20.2804	4 INCH YELLOW FINAL EPOXY RESIN PAVEMENT MARKINGS	20
T20.2812	12 INCH YELLOW FINAL EPOXY RESIN PAVEMENT MARKINGS	20
T20.4506	REMOVE PAVEMENT MARKING LINE - LESS THAN OR EQUAL TO 6 INCHES WIDE	20
201.0401	REMOVE AND DISPOSE GRANITE CURB	20
824.9904	TEMPORARY TRAFFIC PLATE BRIDGE 274	20

Distribution of Quantities

Project Name - Bridge Group 16B - FOS, JOH, PVD, SCI
 Estimate Name - Addendum to BGI6B - Addendum 3
 R.I. Contract No. - 2019-CB-068
 FAP Nos: BHO-PRES(010)

Item No.	Item Code	Description	UM	Qty.	Pay Code	Seq. No.
001	201.0321	CLEARING AND GRUBBING	SY			
		BRIDGE GROUP 16B				
		BRIDGE 295		20.00	0014	01
Item 201.0321 Total:				20.00		
002	201.0402	REMOVE AND DISPOSE CONCRETE CURB	LF			
		BRIDGE GROUP 16B				
		BRIDGE 83		40.00	0014	01
Item 201.0402 Total:				40.00		
003	201.0403	REMOVE AND DISPOSE SIDEWALKS	SY			
		BRIDGE GROUP 16B				
		BRIDGE 232		18.00	0014	01
		BRIDGE 317		227.00	0014	01
		BRIDGE 83		30.00	0014	01
Item 201.0403 Total:				275.00		
004	201.0415	REMOVE AND DISPOSE GUARDRAIL AND POST ALL TYPES	LF			
		BRIDGE GROUP 16B				
		BRIDGE 295		20.00	0014	01
Item 201.0415 Total:				20.00		
005	201.9901	REMOVE AND DISPOSE OF EXISTING JOINT FILLER	LF			
		BRIDGE GROUP 16B				
		BRIDGE 610		110.00	0014	01
Item 201.9901 Total:				110.00		
006	202.0300	UNCLASSIFIED EXCAVATION	CY			
		BRIDGE GROUP 16B				
		BRIDGE 295		5.00	0014	01
Item 202.0300 Total:				5.00		

Distribution of Quantities

Project Name - Bridge Group 16B - FOS, JOH, PVD, SCI
 Estimate Name - Addendum to BG16B - Addendum 3
 R.I. Contract No. - 2019-CB-068
 FAP Nos: BHO-PRES(010)

Item No.	Item Code	Description	UM	Qty.	Pay Code	Seq. No.
007	202.0800	GRAVEL BORROW	CY			
		BRIDGE GROUP 16B				
		BRIDGE 146		1.00	0014	01
		BRIDGE 232		5.00	0014	01
		BRIDGE 83		9.00	0014	01
Item 202.0800 Total:				1.00		
008	203.0400	STRUCTURAL EXCAVATION UNCLASSIFIED	CY			
		BRIDGE GROUP 16B				
		BRIDGE 146		3.00	0014	01
		BRIDGE 274		2.00	0014	01
Item 203.0400 Total:				5.00		
009	206.9901	CATCH BASIN INLET PROTECTION	EACH			
		BRIDGE GROUP 16B				
		BRIDGE 146		5.00	0014	01
		BRIDGE 232		2.00	0014	01
		BRIDGE 61101		4.00	0014	01
		BRIDGE 61121		4.00	0014	01
		BRIDGE 83		4.00	0014	01
Item 206.9901 Total:				19.00		
010	212.2100	MAINTENANCE AND CLEANING OF EROSION AND POLLUTION CONTROLS	LS			
		BRIDGE GROUP 16B				
		PROJECT WIDE		1.00	0014	01
Item 212.2100 Total:				1.00		
011	401.2000	CLASS 12.5 HMA	TON			
		BRIDGE GROUP 16B				
		BRIDGE 146		25.00	0014	01
Item 401.2000 Total:				25.00		

Distribution of Quantities

Project Name - Bridge Group 16B - FOS, JOH, PVD, SCI
 Estimate Name - Addendum to BGI6B - Addendum 3
 R.I. Contract No. - 2019-CB-068
 FAP Nos: BHO-PRES(010)

Item No.	Item Code	Description	UM	Qty.	Pay Code	Seq. No.
012	401.2003	CLASS 12.5 HMA FOR PATCHING	TON			
		BRIDGE GROUP 16B				
		BRIDGE 232		0.70	0014	01
		BRIDGE 83		0.30	0014	01
Item 401.2003 Total:				1.00		
013	401.9901	MODIFIED CLASS 9.5 HMA FOR BRIDGE DECKS	TON			
		BRIDGE GROUP 16B				
		BRIDGE 61101		2.50	0014	01
		BRIDGE 61121		2.50	0014	01
Item 401.9901 Total:				5.00		
014	401.9902	REMOVE AND REPLACE OVERLAY AND WATERPROOF MEMBRANE BRIDGE NO. 274	LS			
		BRIDGE GROUP 16B				
		BRIDGE 274		1.00	0014	01
Item 401.9902 Total:				1.00		
015	403.0300	ASPHALT EMULSION TACK COAT	SY			
		BRIDGE GROUP 16B				
		BRIDGE 146		230.00	0014	01
		BRIDGE 61101		7.50	0014	01
		BRIDGE 61121		7.50	0014	01
		BRIDGE 83		5.00	0014	01
Item 403.0300 Total:				250.00		
016	501.0103	PORTLAND CEMENT CONCRETE BASE	SY			
		BRIDGE GROUP 16B				
		BRIDGE 232		3.00	0014	01
		BRIDGE 83		7.00	0014	01
Item 501.0103 Total:				10.00		

Distribution of Quantities

Project Name - Bridge Group 16B - FOS, JOH, PVD, SCI
 Estimate Name - Addendum to BGI6B - Addendum 3
 R.I. Contract No. - 2019-CB-068
 FAP Nos: BHO-PRES(010)

Item No.	Item Code	Description	UM	Qty.	Pay Code	Seq. No.
017	708.9041	CLEANING CATCH BASINS ALL TYPES	EACH			
		AND SIZES				
		BRIDGE GROUP 16B				
		BRIDGE 146		4.00	0014	01
		Item 708.9041 Total:		4.00		
018	713.8269	ADJUST WATER GATE BOXES TO GRADE	EACH			
		BRIDGE GROUP 16B				
		BRIDGE 232		1.00	0014	01
		Item 713.8269 Total:		1.00		
019	713.8300	ADJUST GAS GATE BOXES TO GRADE	EACH			
		BRIDGE GROUP 16B				
		BRIDGE 232		2.00	0014	01
		Item 713.8300 Total:		2.00		
020	800.9901	MISCELLANEOUS BRIDGE REPAIRS	LS			
		BRIDGE GROUP 16B				
		PROJECT WIDE		1.00	0014	01
		Item 800.9901 Total:		1.00		
021	803.0300	PARTIAL REMOVAL AND DISPOSAL OF	CY			
		EXISTING CONCRETE MASONRY				
		BRIDGE GROUP 16B				
		BRIDGE 146		2.50	0014	01
		BRIDGE 274		17.00	0014	01
		BRIDGE 295		2.50	0014	01
		Item 803.0300 Total:		22.00		
022	803.9901	REMOVE AND DISPOSE EXISTING DECK	LS			
		JOINT				
		BRIDGE GROUP 16B				
		BRIDGE 274		0.34	0014	01

Distribution of Quantities

Project Name - Bridge Group 16B - FOS, JOH, PVD, SCI
 Estimate Name - Addendum to BG16B - Addendum 3
 R.I. Contract No. - 2019-CB-068
 FAP Nos: BHO-PRES(010)

Item No.	Item Code	Description	UM	Qty.	Pay Code	Seq. No.
022	803.9901 Cont.	BRIDGE 61101		0.33	0014	01
		BRIDGE 61121		0.33	0014	01
Item 803.9901 Total:				1.00		
023	807.0350	POINTING & GROUTING MASONRY	LF			
		BRIDGE GROUP 16B				
		BRIDGE 233		70.00	0014	01
		BRIDGE 252		65.00	0014	01
Item 807.0350 Total:				135.00		
024	807.9901	MASONRY VOID REPAIR	CY			
		BRIDGE GROUP 16B				
		BRIDGE 233		1.00	0014	01
Item 807.9901 Total:				1.00		
025	808.0322	CONCRETE SUBSTRUCTURE CLASS HP	CY			
		3/4'' END POSTS				
		BRIDGE GROUP 16B				
		BRIDGE 295		3.00	0014	01
Item 808.0322 Total:				3.00		
026	808.1200	CONCRETE SUPERSTRUCTURE CLASS HP	CY			
		3/4''				
		BRIDGE GROUP 16B				
		BRIDGE 146		3.50	0014	01
		BRIDGE 274		17.50	0014	01
Item 808.1200 Total:				21.00		
027	808.1642	PREFORMED POLYETHYLENE FOAM JOINT	SF			
		FILLER 1''				
		BRIDGE GROUP 16B				
		BRIDGE 274		60.00	0014	01
		BRIDGE 610		50.00	0014	01

Distribution of Quantities

Project Name - Bridge Group 16B - FOS, JOH, PVD, SCI
 Estimate Name - Addendum to BG16B - Addendum 3
 R.I. Contract No. - 2019-CB-068
 FAP Nos: BHO-PRES(010)

Item No.	Item Code	Description	UM	Qty.	Pay Code	Seq. No.
027	808.1642	Cont.				
		Item 808.1642 Total:		110.00		
028	808.1644	PREFORMED POLYETHYLENE FOAM JOINT FILLER 1-1/2''	SF			
		BRIDGE GROUP 16B				
		BRIDGE 274		80.00	0014	01
		Item 808.1644 Total:		80.00		
029	808.1675	POLYURETHANE ELASTOMERIC JOINT SEALANT	CI			
		BRIDGE GROUP 16B				
		BRIDGE 274		550.00	0014	01
		Item 808.1675 Total:		550.00		
030	810.0210	GALVANIZED BAR REINFORCEMENT GRADE 60	LBS			
		BRIDGE GROUP 16B				
		BRIDGE 146		155.00	0014	01
		BRIDGE 274		2,375.00	0014	01
		BRIDGE 295		420.00	0014	01
		Item 810.0210 Total:		2,950.00		
031	811.1400	THERMOPLASTIC PIPE 2 INCH COMMERCIAL GRADE PLASTIC	LF			
		BRIDGE GROUP 16B				
		BRIDGE 274		10.00	0014	01
		Item 811.1400 Total:		10.00		
032	813.0210	HEAT-APPLIED PREFABRICATED MEMBRANE SY				
		BRIDGE GROUP 16B				
		BRIDGE 61101		12.50	0014	01
		BRIDGE 61121		12.50	0014	01
		Item 813.0210 Total:		25.00		

Distribution of Quantities

Project Name - Bridge Group 16B - FOS, JOH, PVD, SCI
 Estimate Name - Addendum to BGI6B - Addendum 3
 R.I. Contract No. - 2019-CB-068
 FAP Nos: BHO-PRES(010)

Item No.	Item Code	Description	UM	Qty.	Pay Code	Seq. No.
033	817.2112	REPAIRS TO STRUCTURE CONCRETE	CF			
		MASONRY - PATCHING MORTAR				
		BRIDGE GROUP 16B				
		BRIDGE 083		7.00	0014	01
		BRIDGE 091		6.00	0014	01
		BRIDGE 146		45.00	0014	01
		BRIDGE 274		5.00	0014	01
		BRIDGE 295		12.00	0014	01
		BRIDGE 61101		55.00	0014	01
		BRIDGE 61121		70.00	0014	01
		Item 817.2112 Total:		200.00		
034	817.2142	REPAIRS TO STRUCTURE CONCRETE	CF			
		MASONRY - FORM AND CAST IN PLACE				
		CONCRETE				
		BRIDGE GROUP 16B				
		BRIDGE 146		2.00	0014	01
		BRIDGE 274		4.00	0014	01
		BRIDGE 295		4.00	0014	01
		BRIDGE 61101		12.00	0014	01
		BRIDGE 61121		18.00	0014	01
		Item 817.2142 Total:		40.00		
035	817.9901	REPAIRS TO PRESTRESSED CONCRETE	SF			
		GIRDERS				
		BRIDGE GROUP 16B				
		BRIDGE 605		80.00	0014	01
		Item 817.9901 Total:		80.00		
036	818.2010	PORTLAND CEMENT CONCRETE DECK	SF			
		REPAIRS (FULL DEPTH REMOVAL)				
		BRIDGE GROUP 16B				
		BRIDGE 274		25.00	0014	01

Distribution of Quantities

Project Name - Bridge Group 16B - FOS, JOH, PVD, SCI
 Estimate Name - Addendum to BGI6B - Addendum 3
 R.I. Contract No. - 2019-CB-068
 FAP Nos: BHO-PRES(010)

Item No.	Item Code	Description	UM	Qty.	Pay Code	Seq. No.
036	818.2010	Cont.				
		Item 818.2010 Total:		25.00		
037	819.0800	DRILL AND GROUT REINFORCING DOWELS	EACH			
		BRIDGE GROUP 16B				
		BRIDGE 146		32.00	0014	01
		BRIDGE 274		65.00	0014	01
		BRIDGE 295		40.00	0014	01
		Item 819.0800 Total:		137.00		
038	820.9901	HIGH PRESSURE WATER CLEANING -	LS			
		BRIDGE NO. 274				
		BRIDGE GROUP 16B				
		BRIDGE 274		1.00	0014	01
		Item 820.9901 Total:		1.00		
039	820.9902	HIGH PRESSURE WATER CLEANING OF	LS			
		HISTORIC BRIDGE STRUCTURE - BRIDGE				
		NO. 295				
		BRIDGE GROUP 16B				
		BRIDGE 295		1.00	0014	01
		Item 820.9902 Total:		1.00		
040	820.9903	HIGH PRESSURE WATER CLEANING -	LS			
		BRIDGE NO. 605				
		BRIDGE GROUP 16B				
		BRIDGE 605		1.00	0014	01
		Item 820.9903 Total:		1.00		
041	820.9904	HIGH PRESSURE WATER CLEANING -	LS			
		BRIDGE NO. 61101				
		BRIDGE GROUP 16B				
		BRIDGE 61101		1.00	0014	01
		Item 820.9904 Total:		1.00		

Distribution of Quantities

Project Name - Bridge Group 16B - FOS, JOH, PVD, SCI
 Estimate Name - Addendum to BG16B - Addendum 3
 R.I. Contract No. - 2019-CB-068
 FAP Nos: BHO-PRES(010)

Item No.	Item Code	Description	UM	Qty.	Pay Code	Seq. No.
042	820.9905	HIGH PRESSURE WATER CLEANING -	LS			
		BRIDGE NO. 61121				
		BRIDGE GROUP 16B				
		BRIDGE 61121		1.00	0014	01
		Item 820.9905 Total:		1.00		
043	820.9906	CONCRETE SURFACE TREATMENT	SF			
		(PROTECTIVE COATING)				
		BRIDGE GROUP 16B				
		BRIDGE 083		20.00	0014	01
		BRIDGE 091		25.00	0014	01
		BRIDGE 146		3,100.00	0014	01
		BRIDGE 274		2,355.00	0014	01
		Item 820.9906 Total:		5,500.00		
S044	820.9907	CONCRETE SURFACE TREATMENT (ASR	SF			
		COATING)				
		BRIDGE GROUP 16B				
		BRIDGE 295		2,200.00	0014	01
		Item 820.9907 Total:		2,200.00		
045	821.1690	SAW & SEALING JOINTS IN BITUMINOUS	LF			
		CONCRETE PAVEMENT				
		BRIDGE GROUP 16B				
		BRIDGE 146		90.00	0014	01
		BRIDGE 317		136.00	0014	01
		BRIDGE 61101		107.00	0014	01
		BRIDGE 61121		107.00	0014	01
		Item 821.1690 Total:		440.00		
046	823.1750	ASPHALTIC EXPANSION JOINT SYSTEM	LF			
		BRIDGE GROUP 16B				
		BRIDGE 61101		110.00	0014	01

Distribution of Quantities

Project Name - Bridge Group 16B - FOS, JOH, PVD, SCI
 Estimate Name - Addendum to BG16B - Addendum 3
 R.I. Contract No. - 2019-CB-068
 FAP Nos: BHO-PRES(010)

Item No.	Item Code	Description	UM	Qty.	Pay Code	Seq. No.
046	823.1750	Cont. BRIDGE 61121		110.00	0014	01
Item 823.1750 Total:				220.00		
047	823.1760	STRIP SEAL EXPANSION JOINT ASSEMBLIES BRIDGE GROUP 16B BRIDGE 274	LF	30.00	0014	01
Item 823.1760 Total:				30.00		
048	824.9901	STEEL GIRDER REPAIRS BRIDGE NO. 274 LBS BRIDGE GROUP 16B BRIDGE 274		1,100.00	0014	01
Item 824.9901 Total:				1,100.00		
049	824.9902	STEEL GIRDER REPAIRS BRIDGE NO. 61101 BRIDGE GROUP 16B BRIDGE 61101	LBS	80.00	0014	01
Item 824.9902 Total:				80.00		
050	824.9903	STEEL GIRDER REPAIRS BRIDGE NO. 61121 BRIDGE GROUP 16B BRIDGE 61121	LBS	80.00	0014	01
Item 824.9903 Total:				80.00		
051	825.9901	REPAINTING EXISTING STRUCTURAL STEEL - BRIDGE NO. 274 BRIDGE GROUP 16B BRIDGE 274	LS	1.00	0014	01
Item 825.9901 Total:				1.00		
052	825.9902	REPAINTING STRUCTURL STEEL -	LS			

Distribution of Quantities

Project Name - Bridge Group 16B - FOS, JOH, PVD, SCI
 Estimate Name - Addendum to BGI6B - Addendum 3
 R.I. Contract No. - 2019-CB-068
 FAP Nos: BHO-PRES(010)

Item No.	Item Code	Description	UM	Qty.	Pay Code	Seq. No.
052	825.9902	Cont. BRIDGE NO. 61101				
		BRIDGE GROUP 16B				
		BRIDGE 61101		1.00	0014	01
Item 825.9902 Total:				1.00		
053	825.9903	REPAINTING EXISTING STRUCTURAL	LS			
		STEEL - BRIDGE NO 61121				
		BRIDGE GROUP 16B				
		BRIDGE 61121		1.00	0014	01
Item 825.9903 Total:				1.00		
054	826.0100	CONTAINMENT, COLLECTION, STORAGE	LS			
		AND DISPOSAL OF DEBRIS AND SPENT				
		MATERIALS				
		BRIDGE GROUP 16B				
		PROJECT WIDE		1.00	0014	01
Item 826.0100 Total:				1.00		
055	826.0200	PERSONNEL PROTECTION DURING	LS			
		PAINTING AND CLEANING OPERATIONS				
		BRIDGE GROUP 16B				
		BRIDGE 274		0.34	0014	01
		BRIDGE 61101		0.33	0014	01
		BRIDGE 61121		0.33	0014	01
Item 826.0200 Total:				1.00		
056	833.0400	GRANITE IDENTIFICATION TABLETS	EACH			
		BRIDGE GROUP 16B				
		BRIDGE 274		2.00	0014	01
		BRIDGE 295		2.00	0014	01
Item 833.0400 Total:				4.00		
057	835.0210	DECK SCUPPERS SINGLE COMPLETE WITH	EACH			

Distribution of Quantities

Project Name - Bridge Group 16B - FOS, JOH, PVD, SCI
 Estimate Name - Addendum to BG16B - Addendum 3
 R.I. Contract No. - 2019-CB-068
 FAP Nos: BHO-PRES(010)

Item No.	Item Code	Description	UM	Qty.	Pay Code	Seq. No.
057	835.0210	Cont. DOWNSPOUT				
		BRIDGE GROUP 16B				
		BRIDGE 146		2.00	0014	01
				Item 835.0210 Total:		2.00
058	836.0100	STRUCTURAL CONCRETE CRACK REPAIR BY EPOXY-RESIN BASE ADHESIVE INJECTION	LF			
		BRIDGE GROUP 16B				
		BRIDGE 091		6.00	0014	01
		BRIDGE 146		9.00	0014	01
				Item 836.0100 Total:		15.00
059	839.0100	PARTIAL-DEPTH REMOVAL AND DISPOSAL OF BITUMINOUS PAVEMENT FROM CONCRETE BRIDGE DECKS	SY			
		BRIDGE GROUP 16B				
		BRIDGE 146		230.00	0014	01
				Item 839.0100 Total:		230.00
060	839.0200	FULL DEPTH REMOVAL AND DISPOSAL OF BITUMINOUS PAVEMENT FROM CONCRETE BRIDGE DECKS	SY			
		BRIDGE GROUP 16B				
		BRIDGE 61101		10.00	0014	01
		BRIDGE 61121		10.00	0014	01
				Item 839.0200 Total:		20.00
061	842.0100	ANTI-GRAFFITI COATING	SF			
		BRIDGE GROUP 16B				
		BRIDGE 605		9,000.00	0014	01
				Item 842.0100 Total:		9,000.00

Distribution of Quantities

Project Name - Bridge Group 16B - FOS, JOH, PVD, SCI
 Estimate Name - Addendum to BGI6B - Addendum 3
 R.I. Contract No. - 2019-CB-068
 FAP Nos: BHO-PRES(010)

Item No.	Item Code	Description	UM	Qty.	Pay Code	Seq. No.
062	901.0161	GUARDRAIL STEEL BEAM POST (IN EARTH AND ASPHALT) BRIDGE GROUP 16B BRIDGE 295	EACH	2.00	0014	01
Item 901.0161 Total:				2.00		
063	901.0193	GUARDRAIL STEEL BEAM SINGLE FACE STANDARD 34.2.0 BRIDGE GROUP 16B BRIDGE 295	LF	20.00	0014	01
Item 901.0193 Total:				20.00		
064	901.0197	GUARDRAIL CONNECTION TO EXISTING ENDPOST APPROACH END SECTION, STANDARD 34.3.5 BRIDGE GROUP 16B BRIDGE 295	EACH	2.00	0014	01
Item 901.0197 Total:				2.00		
065	903.0410	TEMPORARY CHAIN LINK FENCE BRIDGE GROUP 16B BRIDGE 146	LF	300.00	0014	01
Item 903.0410 Total:				300.00		
066	905.0110	PORTLAND CEMENT SIDEWALK MONOLITHIC STANDARD 43.1.0 BRIDGE GROUP 16B BRIDGE 083 BRIDGE 232	CY	4.00	0014	01
Item 905.0110 Total:				6.00		
067	905.0140	BITUMINOUS SIDEWALK STANDARD 43.2.0 TON BRIDGE GROUP 16B				

Distribution of Quantities

Project Name - Bridge Group 16B - FOS, JOH, PVD, SCI
 Estimate Name - Addendum to BG16B - Addendum 3
 R.I. Contract No. - 2019-CB-068
 FAP Nos: BHO-PRES(010)

Item No.	Item Code	Description	UM	Qty.	Pay Code	Seq. No.
067	905.0140	Cont. BRIDGE 317		50.00	0014	01
Item 905.0140 Total:				50.00		
068	906.0110	GRANITE CURB, QUARRY SPLIT STRAIGHT, STANDARD 7.3.0 BRIDGE GROUP 16B BRIDGE 232	LF	20.00	0014	01
Item 906.0110 Total:				20.00		
069	906.0240	CEMENT CONCRETE CURB TYPES 10'' X 10'' STRAIGHT BRIDGE GROUP 16B BRIDGE 83	LF	50.00	0014	01
Item 906.0240 Total:				50.00		
070	906.0700	REMOVE, HANDLE, HAUL TRIM RESET CURB EDGING, STRAIGHT, CIRCULAR ALL TYPES BRIDGE GROUP 16B BRIDGE 232	LF	20.00	0014	01
Item 906.0700 Total:				**DELETED**		
071	907.0100	WATER FOR DUST CONTROL BRIDGE GROUP 16B BRIDGE 146	MGAL	1.00	0014	01
Item 907.0100 Total:				1.00		
072	914.5010	FLAGPERSONS BRIDGE GROUP 16B BRIDGE 146 BRIDGE 232 BRIDGE 274 BRIDGE 295	MHRS	50.00 50.00 3,552.00 50.00	0014 0014 0014 0014	01 01 01 01

Distribution of Quantities

Project Name - Bridge Group 16B - FOS, JOH, PVD, SCI
 Estimate Name - Addendum to BG16B - Addendum 3
 R.I. Contract No. - 2019-CB-068
 FAP Nos: BHO-PRES(010)

Item No.	Item Code	Description	UM	Qty.	Pay Code	Seq. No.
072	914.5010	Cont.				
		BRIDGE 317		576.00	0014	01
		BRIDGE 83		696.00	0014	01
		BRIDGE 91		50.00	0014	01
Item 914.5010 Total:				5,024.00		
073	914.5020	FLAGPERSONS - OVERTIME	MHRS			
		BRIDGE GROUP 16B				
		PROJECT WIDE		1,005.00	0014	01
Item 914.5020 Total:				1,005.00		
074	920.0055	PLACED STONE RIPRAP R-3, R-4, R-5	SY			
		STANDARD 8.3.0				
		BRIDGE GROUP 16B				
		BRIDGE 295		10.00	0014	01
Item 920.0055 Total:				10.00		
075	920.0140	BEDDING FOR RIPRAP FS-3 STANDARD	SY			
		8.3.0				
		BRIDGE GROUP 16B				
		BRIDGE 295		10.00	0014	01
Item 920.0140 Total:				10.00		
076	920.0200	FILTER FABRIC FOR RIP-RAP	SY			
		BRIDGE GROUP 16B				
		BRIDGE 295		10.00	0014	01
Item 920.0200 Total:				10.00		
077	922.0100	TEMPORARY CONSTRUCTION SIGNS	SF			
		STANDARD 29.1.0 AND 27.1.1				
		BRIDGE GROUP 16B				
		PROJECT WIDE		3,430.00	0014	01
Item 922.0100 Total:				3,430.00		

Distribution of Quantities

Project Name - Bridge Group 16B - FOS, JOH, PVD, SCI
 Estimate Name - Addendum to BGI6B - Addendum 3
 R.I. Contract No. - 2019-CB-068
 FAP Nos: BHO-PRES(010)

Item No.	Item Code	Description	UM	Qty.	Pay Code	Seq. No.
078	923.0105	DRUM BARRICADE STANDARD 26.2.0	BDAY			
		BRIDGE GROUP 16B				
		BRIDGE 146		1,192.00	0014	01
		BRIDGE 274		2,960.00	0014	01
		BRIDGE 295		525.00	0014	01
		BRIDGE 317		480.00	0014	01
		BRIDGE 605		625.00	0014	01
		BRIDGE 610		375.00	0014	01
		BRIDGE 61101		2,610.00	0014	01
		BRIDGE 61121		2,995.00	0014	01
		BRIDGE 83		580.00	0014	01
Item 923.0105 Total:				12,342.00		
079	923.0125	PLASTIC PIPE TYPE III BARRICADE STANDARD 26.3.1	EACH			
		BRIDGE GROUP 16B				
		PROJECT WIDE		21.00	0014	01
Item 923.0125 Total:				21.00		
080	923.0200	FLUORESCENT TRAFFIC CONES STANDARD 26.1.0	EACH			
		BRIDGE GROUP 16B				
		PROJECT WIDE		97.00	0014	01
Item 923.0200 Total:				97.00		
081	924.0113	ADVANCE WARNING ARROW PANEL	PDAY			
		BRIDGE GROUP 16B				
		PROJECT WIDE		219.00	0014	01
Item 924.0113 Total:				219.00		
082	925.0112	PORTABLE CHANGEABLE MESSAGE SIGN	PDAY			
		BRIDGE GROUP 16B				
		PROJECT WIDE		88.00	0014	01

Distribution of Quantities

Project Name - Bridge Group 16B - FOS, JOH, PVD, SCI
 Estimate Name - Addendum to BG16B - Addendum 3
 R.I. Contract No. - 2019-CB-068
 FAP Nos: BHO-PRES(010)

Item No.	Item Code	Description	UM	Qty.	Pay Code	Seq. No.
082	925.0112	Cont.				
				Item 925.0112 Total:		
				88.00		
083	926.0140	REFLECTIVE DELINEATORS FOR TEMPORARY CONCRETE BARRIERS BRIDGE GROUP 16B PROJECT WIDE	EACH			
				27.00	0014	01
				Item 926.0140 Total:		
				27.00		
084	926.9901	TEMPORARY IMPACT ATTENUATOR BRIDGE GROUP 16B PROJECT WIDE	EACH			
				8.00	0014	01
				Item 926.9901 Total:		
				8.00		
085	926.9902	REMOVE AND RESET TEMPORARY IMPACT ATTENUATOR BRIDGE GROUP 16B PROJECT WIDE	EACH			
				6.00	0014	01
				Item 926.9902 Total:		
				6.00		
086	926.9903	RELOCATE PRECAST MEDIAN BARRIER FOR TEMPORARY TRAFFIC CONTROL BRIDGE GROUP 16B PROJECT WIDE	LF			
				685.00	0014	01
				Item 926.9903 Total:		
				685.00		
087	926.9904	UNANCHORED BARRIER FOR TEMPORARY TRAFFIC CONTROL BRIDGE GROUP 16B PROJECT WIDE	LF			
				875.00	0014	01
				Item 926.9904 Total:		
				875.00		
088	928.9901	TRUCK MOUNTED ATTENUATOR WITH TRUCK MOUNTED FLASHING ARROW	HRS			

Distribution of Quantities

Project Name - Bridge Group 16B - FOS, JOH, PVD, SCI

Estimate Name - Addendum to BGI6B - Addendum 3

R.I. Contract No. - 2019-CB-068

FAP Nos: BHO-PRES(010)

Item No.	Item Code	Description	UM	Qty.	Pay Code	Seq. No.
088	928.9901 Cont.	BRIDGE GROUP 16B				
		PROJECT WIDE		664.00	0014	01
				Item 928.9901 Total:	664.00	
089	929.0110	FIELD OFFICE	PMO			
		BRIDGE GROUP 16B				
		PROJECT WIDE		16.00	0014	01
				Item 929.0110 Total:	16.00	
090	931.0110	CLEANING AND SWEEPING PAVEMENT	HSY			
		BRIDGE GROUP 16B				
		BRIDGE 146		5.00	0014	01
				Item 931.0110 Total:	5.00	
091	932.0200	FULL-DEPTH SAWCUT OF BITUMINOUS PAVEMENT	LF			
		BRIDGE GROUP 16B				
		BRIDGE 146		400.00	0014	01
		BRIDGE 232		30.00	0014	01
		BRIDGE 83		50.00	0014	01
				Item 932.0200 Total:	480.00	
092	936.0110	MOBILIZATION	LS			
		BRIDGE GROUP 16B				
		PROJECT WIDE		1.00	0014	01
				Item 936.0110 Total:	1.00	
093	937.0200	MAINTENANCE AND MOVEMENT TRAFFIC PROTECTION	LS			
		BRIDGE GROUP 16B				
		PROJECT WIDE		1.00	0014	01
				Item 937.0200 Total:	1.00	

Distribution of Quantities

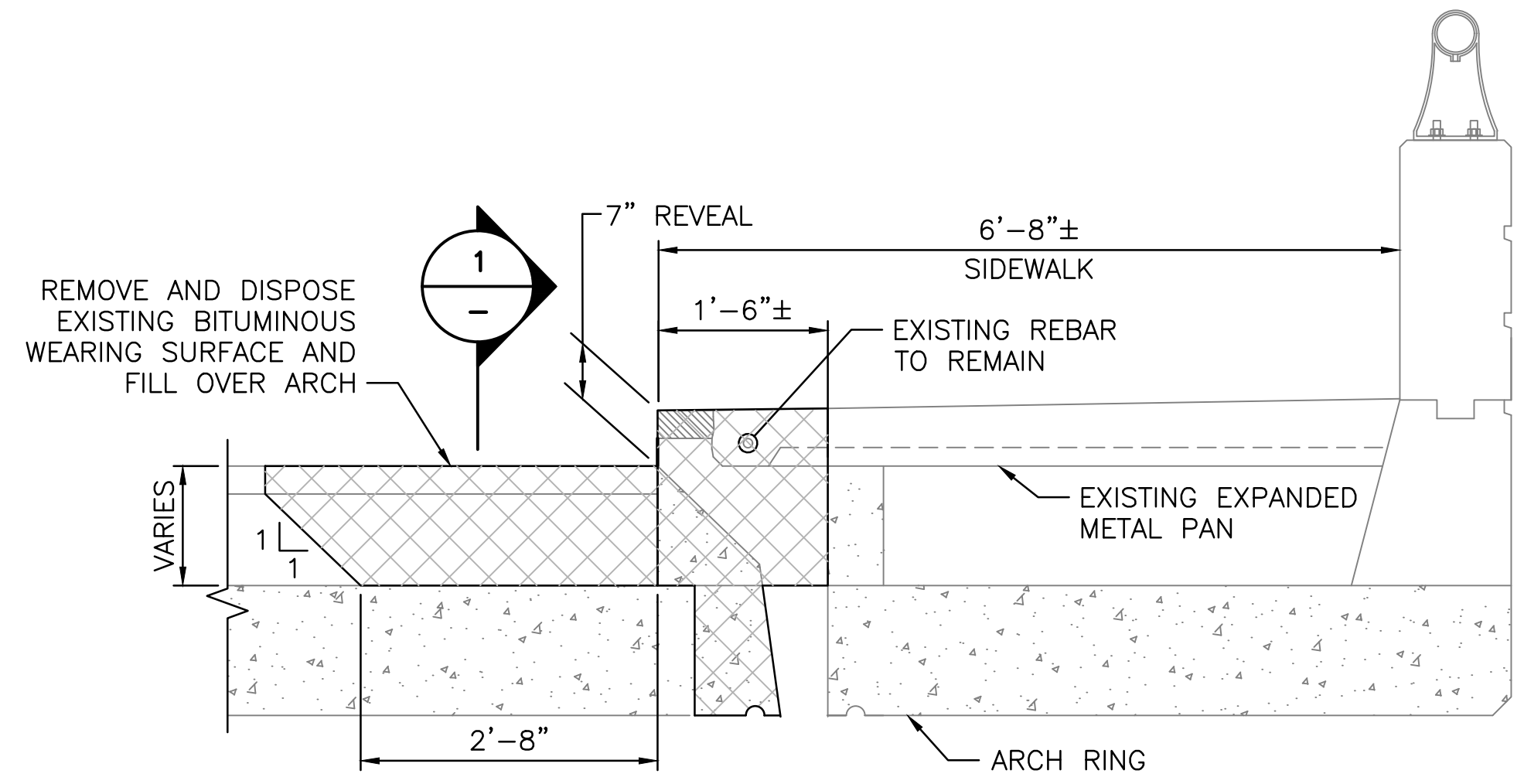
Project Name - Bridge Group 16B - FOS, JOH, PVD, SCI
 Estimate Name - Addendum to BG16B - Addendum 3
 R.I. Contract No. - 2019-CB-068
 FAP Nos: BHO-PRES(010)

Item No.	Item Code	Description	UM	Qty.	Pay Code	Seq. No.
094	L09.9901	SELECTIVE CLEARING	LS			
		BRIDGE GROUP 16B				
		PROJECT WIDE		1.00	0014	01
Item L09.9901 Total:				1.00		
095	T20.0706	6 INCH WHITE WATERBORNE PAINT	LF			
		PAVEMENT MARKINGS				
		BRIDGE GROUP 16B				
		BRIDGE GROUP 16B		1,540.00	0014	01
Item T20.0706 Total:				1,540.00		
096	T20.0712	12 INCH WHITE WATERBORNE PAINT	LF			
		PAVEMENT MARKINGS				
		BRIDGE GROUP 16B				
		BRIDGE GROUP 16B		90.00	0014	01
Item T20.0712 Total:				90.00		
097	T20.0906	6 INCH YELLOW WATERBORNE PAINT	LF			
		PAVEMENT MARKINGS				
		BRIDGE GROUP 16B				
		BRIDGE GROUP 16B		2,070.00	0014	01
Item T20.0906 Total:				2,070.00		
098	T20.2406	6 INCH WHITE FINAL EPOXY RESIN	LF			
		PAVEMENT MARKINGS				
		BRIDGE GROUP 16B				
		BRIDGE GROUP 16B		970.00	0014	01
Item T20.2406 Total:				970.00		
099	T20.2412	12 INCH WHITE FINAL EPOXY RESIN	LF			
		PAVEMENT MARKINGS				
		BRIDGE GROUP 16B				
		BRIDGE GROUP 16B		230.00	0014	01

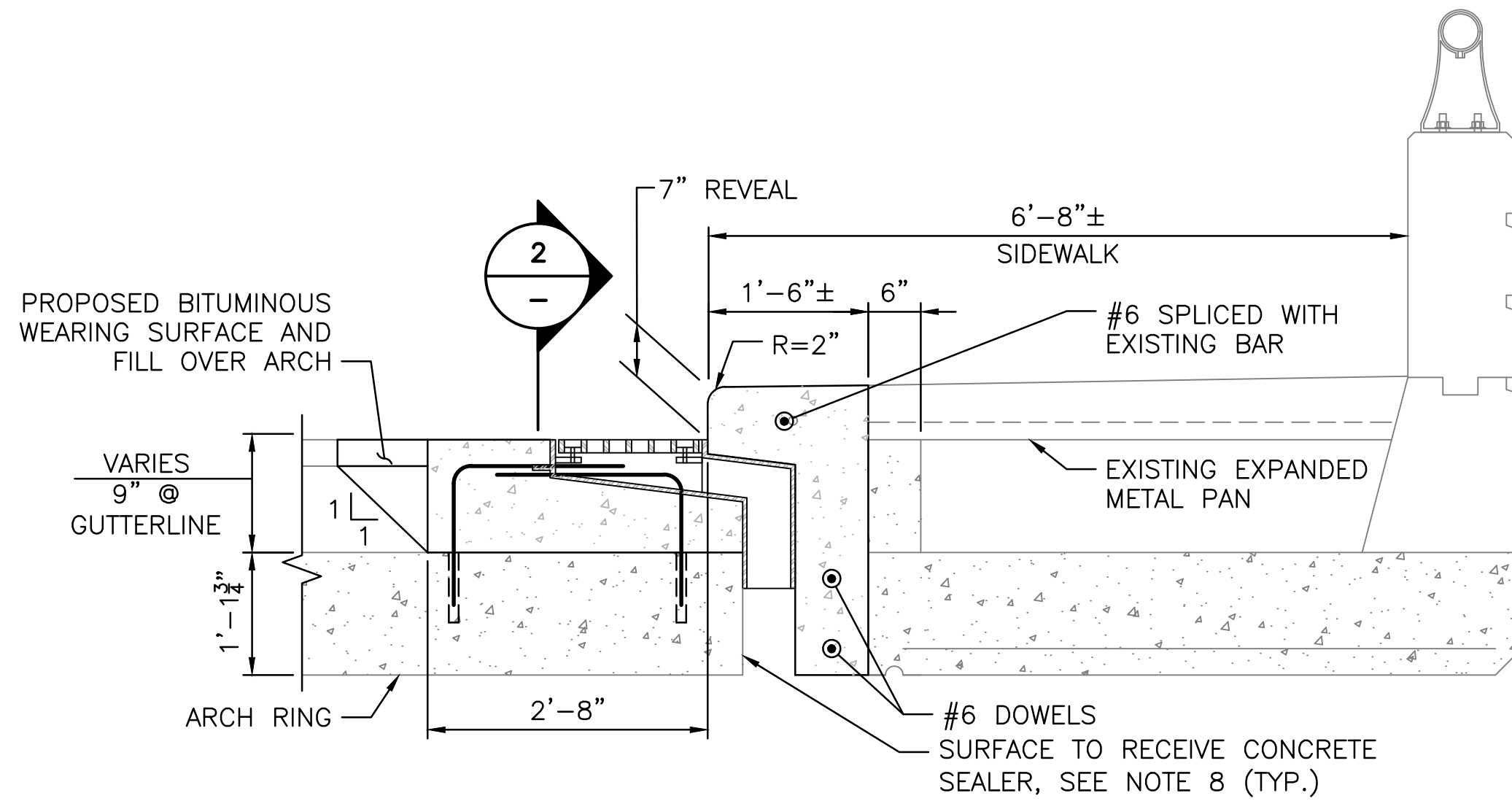
Distribution of Quantities

Project Name - Bridge Group 16B - FOS, JOH, PVD, SCI
 Estimate Name - Addendum to BG16B - Addendum 3
 R.I. Contract No. - 2019-CB-068
 FAP Nos: BHO-PRES(010)

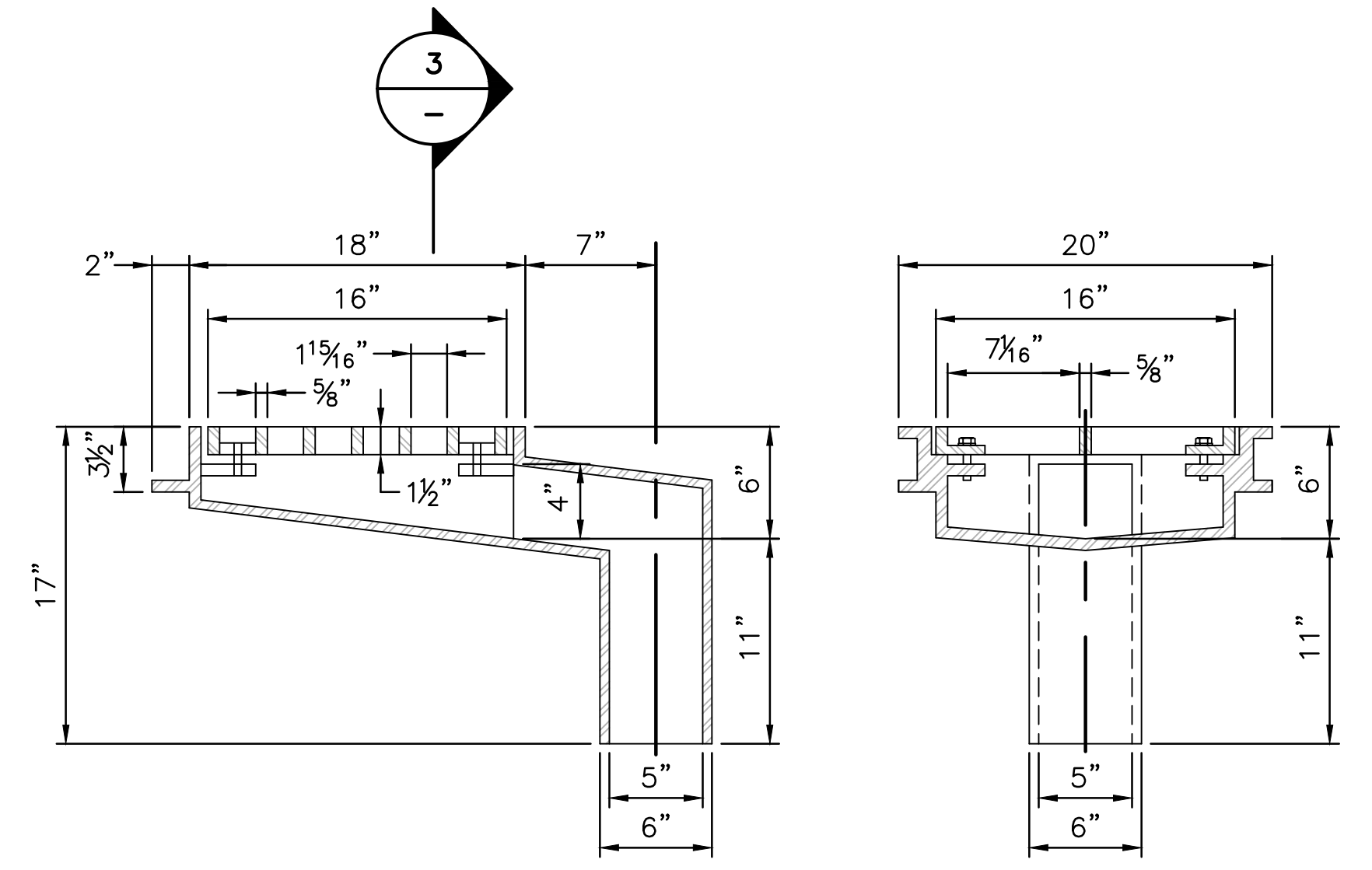
Item No.	Item Code	Description	UM	Qty.	Pay Code	Seq. No.
099	T20.2412 Cont.	Item T20.2412 Total:		230.00		
100	T20.2804	4 INCH YELLOW FINAL EPOXY RESIN PAVEMENT MARKINGS BRIDGE GROUP 16B BRIDGE GROUP 16B	LF	950.00	0014	01
Item T20.2804 Total:				950.00		
101	T20.2812	12 INCH YELLOW FINAL EPOXY RESIN PAVEMENT MARKINGS BRIDGE GROUP 16B BRIDGE GROUP 16B	LF	280.00	0014	01
Item T20.2812 Total:				280.00		
102	T20.4506	REMOVE PAVEMENT MARKING LINE - LESS THAN OR EQUAL TO 6 INCHES WIDE BRIDGE GROUP 16B PROJECT WIDE	LF	4,900.00	0014	01
Item T20.4506 Total:				4,900.00		
103	201.0401	REMOVE AND DISPOSE GRANITE CURB BRIDGE GROUP 16B BRIDGE 232	LF	20.00	0014	01
Item 201.0401 Total:				20.00		
104	824.9904	TEMPORARY TRAFFIC PLATE BRIDGE 274 BRIDGE GROUP 16B BRIDGE 274	LS	1.00	0014	01
Item 824.9904 Total:				1.00		



GUTTER DRAIN SECTION
 SCALE: 3/4"=1'-0"

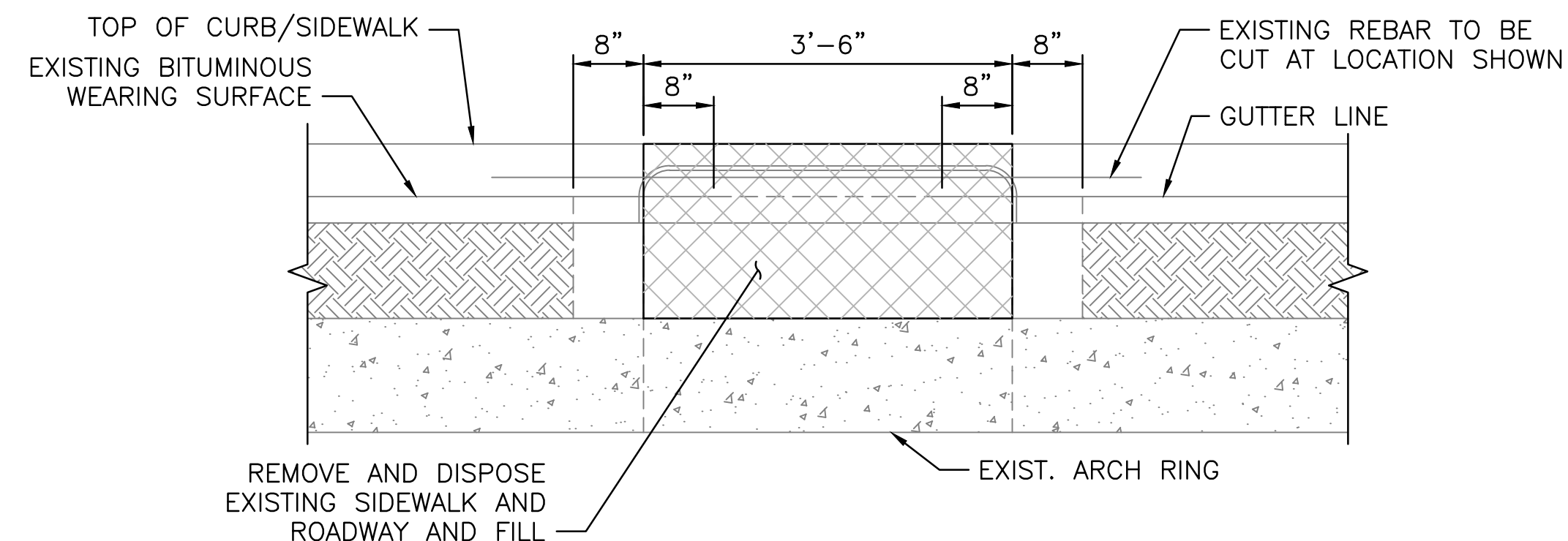


GUTTER DRAIN SECTION
 SCALE: 3/4"=1'-0"

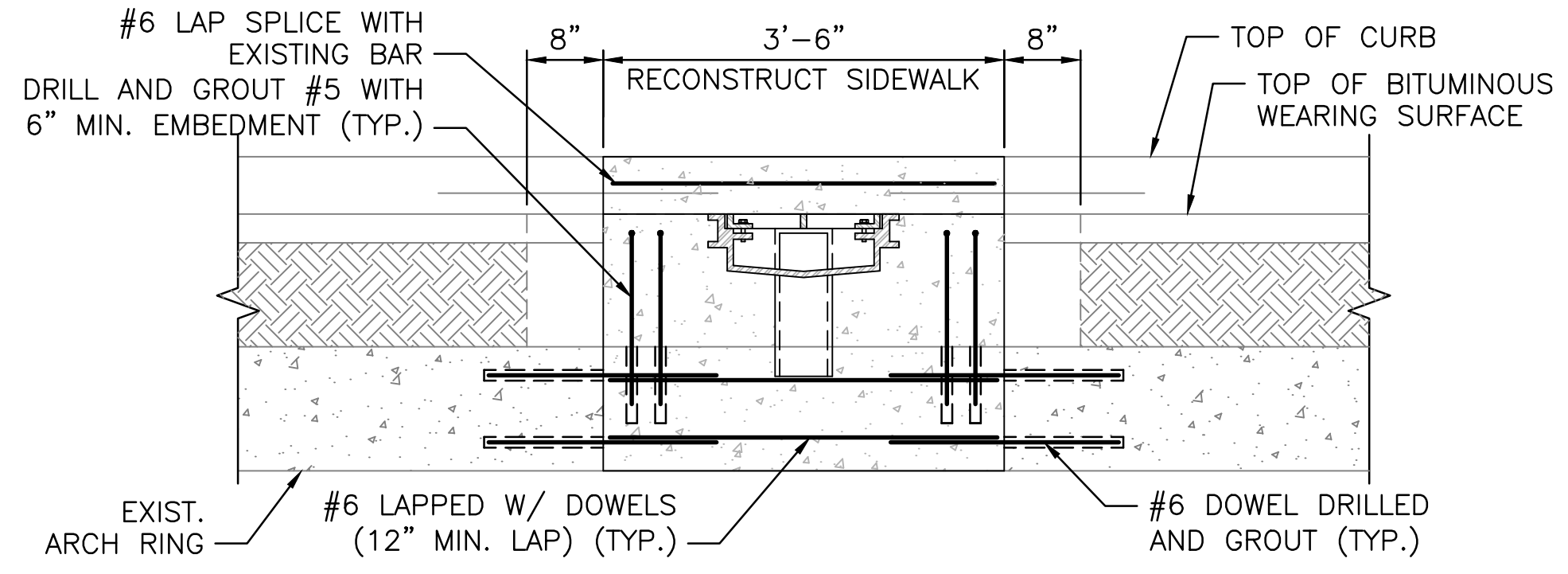


R-3935 SCUPPER
 SCALE: 1 1/2"=1'-0"

SECTION 3
 SCALE: 1 1/2"=1'-0"



GUTTER DRAIN ELEVATION VIEW 1
 SCALE: 3/4"=1'-0"



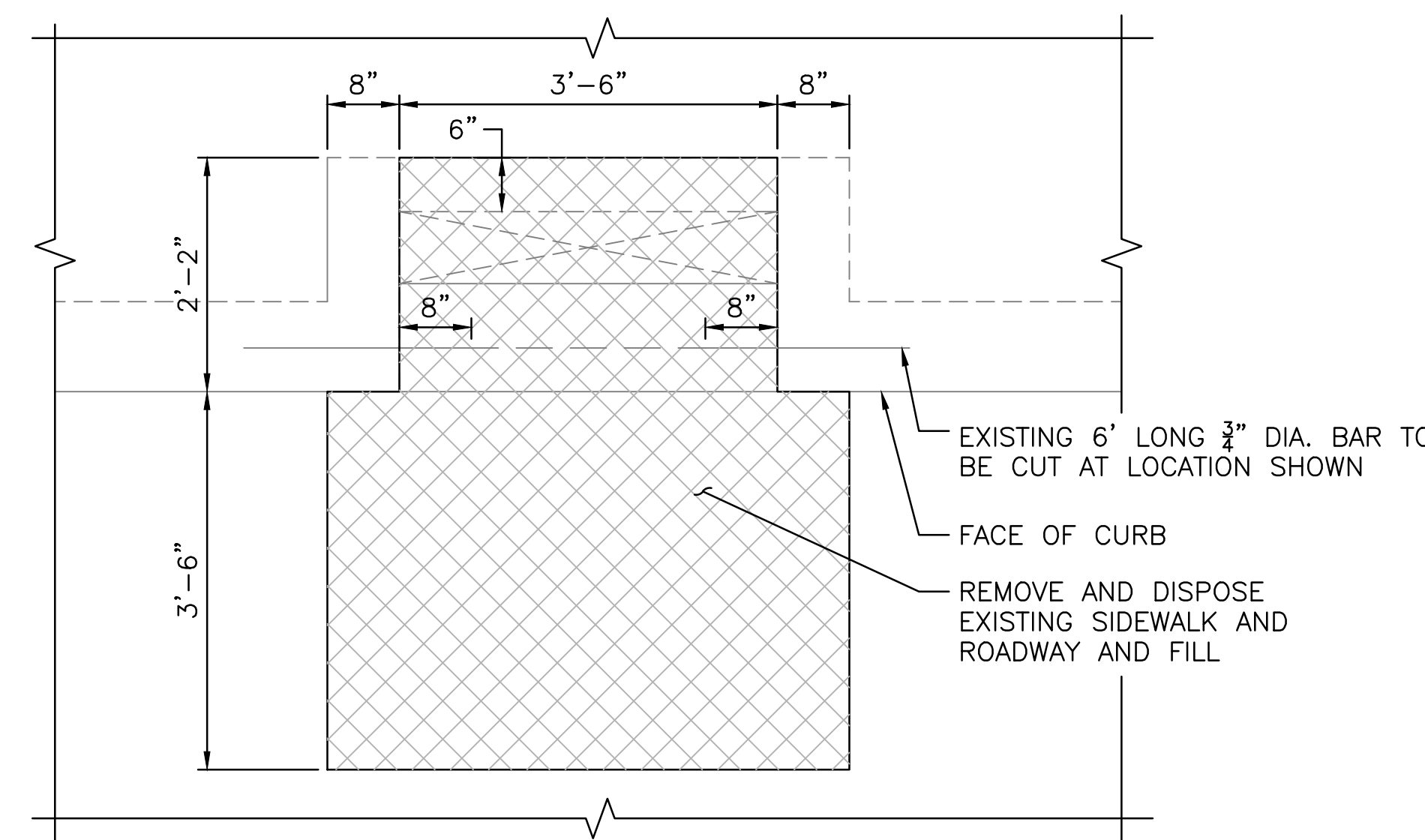
GUTTER DRAIN ELEVATION VIEW 2
 SCALE: 3/4"=1'-0"

LEGEND:

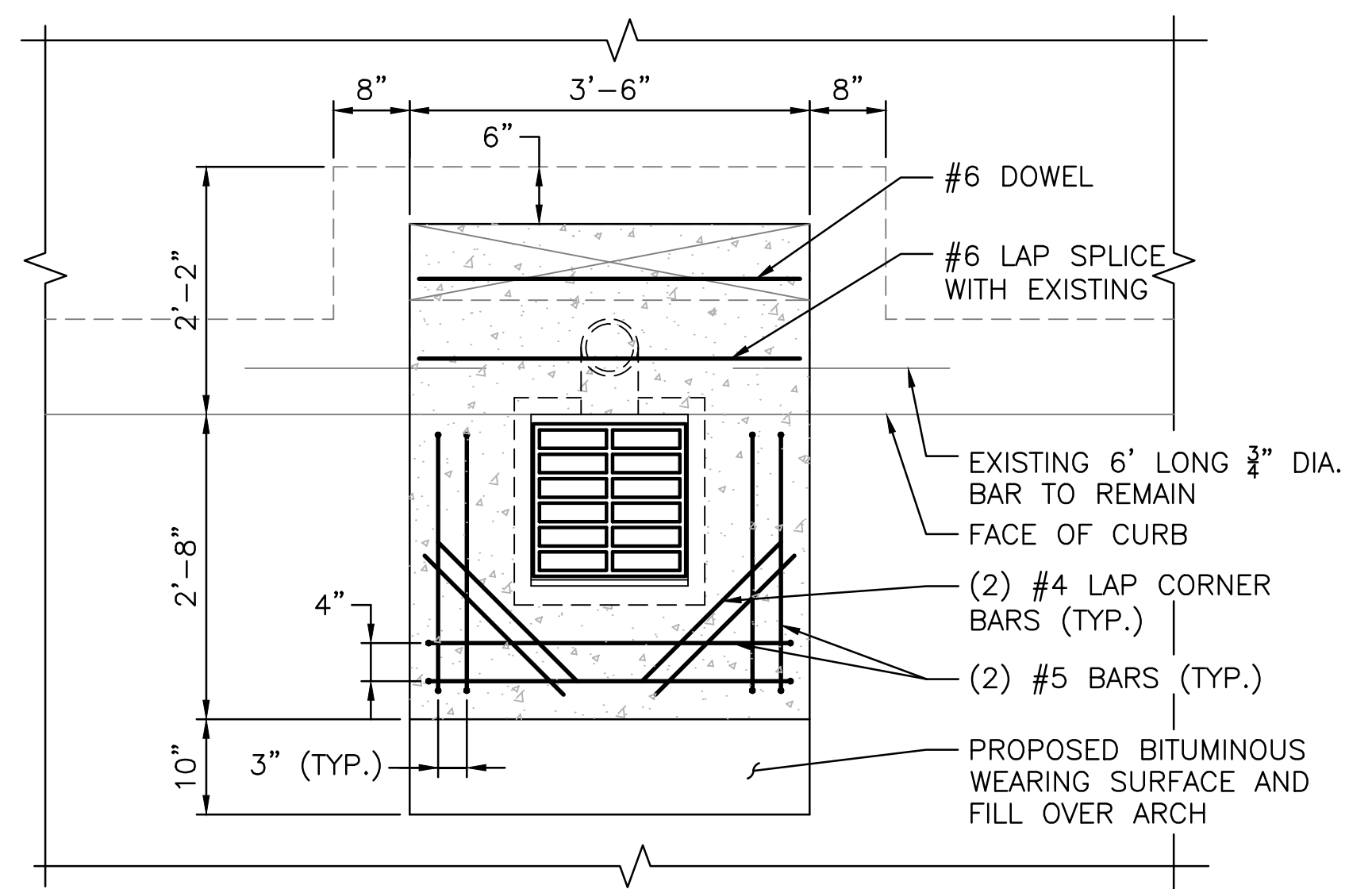
DEMOLISH CONCRETE AREA AT BACKWALL, SEE NOTE 5

NOTES:

- ALL DIMENSIONS AND SIZES ARE TAKEN FROM LIMITED EXISTING PLANS AND FIELD INVESTIGATIONS AND AS SUCH ARE NOT GUARANTEED. CONTRACTOR SHALL FIELD VERIFY ALL REQUIRED DIMENSIONS PRIOR TO START OF WORK.
- CONTRACTOR SHALL EXERCISE CARE TO AVOID THE EXISTING GAS LINE AND OTHER UTILITIES DURING SCUPPER REMOVAL OPERATIONS.
- COST OF REMOVAL OF EXISTING SECTIONS OF CONCRETE ARCH AS INDICATED FOR SCUPPER REMOVAL SHALL BE INCLUDED AND PAID UNDER ITEM 803.0300 "PARTIAL REMOVAL AND DISPOSAL OF EXISTING CONCRETE MASONRY."
- RECONSTRUCTING OF SCUPPER AREAS AS INDICATED SHALL BE INCLUDED IN THE FOLLOWING ITEMS AS APPROPRIATE: ITEM 808.1200 "CONCRETE SUPERSTRUCTURE CLASS HP 3/4," ITEM 810.0210 "GALVANIZED BAR REINFORCEMENT GRADE 60," ITEM 819.0800 "DRILL AND GROUT REINFORCING DOWELS."
- CONCRETE REMOVAL SHALL EXTEND TO SOUND CONCRETE. IF UNSOUND CONCRETE IS FOUND AT THE LIMITS OF REMOVAL, THE CONTRACTOR SHALL STOP WORK AND NOTIFY THE ENGINEER.
- EXCAVATION OF FILL OVER ARCH SHALL BE INCLUDED AND PAID UNDER ITEM 203.0400 "STRUCTURAL EXCAVATION UNCLASSIFIED."
- REPLACEMENT OF FILL OVER ARCH IN AREAS OF SCUPPER MODIFICATION SHALL BE INCLUDED AND PAID FOR ITEM 202.0800 "GRAVEL BORROW."
- APPLY CONCRETE SEALER TO THE EXPOSED CONCRETE SURFACE BETWEEN END OF SCUPPER DOWNSPOUT AND BOTTOM FOR ARCH. COST OF CONCRETE SEALER SHALL BE INCLUDED IN ITEM 820.9906 "CONCRETE SURFACE TREATMENT (PROTECTIVE COATING)."



GUTTER DRAIN VIEW PLAN
 SCALE: 3/4"=1'-0"
DEMOLITION



GUTTER DRAIN VIEW PLAN
 SCALE: 3/4"=1'-0"
PROPOSED

ENTIRE SHEET REPLACED BY ADDENDUM No. 3

REVISIONS		
NO.	DATE	BY
1	10/01/19	LBG
2	10/11/19	LBG

RHODE ISLAND
DEPARTMENT OF TRANSPORTATION

BRIDGE GROUP 16B
 PROVIDENCE COUNTY, RHODE ISLAND

BRIDGE NO. 146 ROUTE 44 OVER
 WOONASQUATUCKET RIVER; JOHNSTON, RI
BRIDGE SCUPPER MODIFICATION

CHECKED BY JPM DATE 09/11/19 SCALE AS NOTED



Louis Berger
 166 VALLEY STREET
 PROVIDENCE, RI 02908
 TEL 401.521.5980
 WWW.LOUISBERGER.COM