

September 4, 2019

STATE OF RHODE ISLAND AND PROVIDENCE PLANTATION
DEPARTMENT OF ADMINISTRATION

DIVISION OF PURCHASES BID NO. 7598921

RHODE ISLAND DEPARTMENT OF TRANSPORTATION

RHODE ISLAND CONTRACT NO.2019-CH-083

FEDERAL-AID PROJECT NO. FAP Nos: STPG-HSIP(066), STP-RESF(401)

Old Tower Hill Rd (Rt 108 - Rt 1)

The roadway project limits extend from approximately 150 east of Kingston Road (Rte. 108) to the Tower Hill Road (Rte. 1) southbound ramps.

CITY/TOWN OF South Kingstown

COUNTY OF WASHINGTON

NOTICE TO PROSPECTIVE BIDDERS

ADDENDUM NO. 2 Prospective bidders and all concerned are hereby notified of the following changes in the Plans, Specifications, Proposal and Distribution of Quantities for this contract. These changes shall be incorporated in the Plans, Specifications, Proposal and Distribution of Quantities, and shall become an integral part of the Contract Documents.

A. Plan Sheets

1. Plan Sheet 12

Replace Plan Sheet 12 with Sheet 12(R-1) attached to this Addendum No. 2. A note regarding the work to be performed at the Flood Mazda driveway on Kelley Way has been added.

2. Plan Sheet 40

Replace Plan Sheet 40 with Sheet 40(R-1) attached to this Addendum No. 2. The bioretention curb inlet planter details have been modified.

3. Plan Sheet 41

Replace Plan Sheet 41 with Sheet 41(R-1) attached to this Addendum No. 2. The bioretention curb inlet planter details have been modified.

B. Specifications - Job Specific

1. Pages JS-10, JS-11 and JS-12

Replace Job Specific Page JS-10, JS-11, and JS-12 with Page JS-10(R-1), JS-11(R-1), and JS-12(R-1) attached to this Addendum No. 2. Plantings have been removed from Item Codes 711.9901, 711.9902 and 711.9903. Requirements for amended soil mix have been modified.

C. Distribution of Quantities

1. Table of Contents

Replace Table of Contents with Table of Contents index pages 1(R-1) through 4(R-1) attached to this Addendum No. 2. The Table of Contents has been revised.

2. Page 7

Replace page 7 with Page 7(R-1) attached to this Addendum No. 2. The quantity for Item Code 202.0100 Earth Excavation has been revised and the quantity for Item Code 204.0100 Trimming and Fine Grading has been revised.

3. Page 9

Replace Page 9 with Page 9(R-1) attached to this Addendum No. 2. The quantity for Item Code 302.0100 Gravel Borrow Subbase Course has been revised.

4. Page 10

Replace Page 10 with Page 10(R-1) attached to this Addendum No. 2. The quantity for Item Code 401.2100 Modified Class 12.5 HMA has been revised.

5. Page 11

Replace Page 11 with Page 11(R-1) attached to this Addendum No. 2. The quantity for Item Code 701.5312 Inch Ductile Iron Water Pipe Class 52, Push-on Joint has been revised.

6. Page 39

Replace Page 39 with Page 39(R-1) and Page 39a attached to this Addendum No. 2. The quantity for Item Code L01.9901 Pine Bark Mulch (3" Depth) has been revised.

7. Page 40 and Page 41

Replace Page 40 and Page 41 with Page 40(R-1), Page 40a, Page 41(R-1), and Page 41a attached to this Addendum No. 2. Item Code L01.9902 has been removed. Item Codes L06.9901 through L06.9906 have been updated.

8. Page 60

Replace Page 60 with Page 60(R-1) and Page 61 attached to this Addendum No. 2. Item Code L01.0104 and Item Codes L06.9907 through L06.9913 have been added.



RI Department of Transportation

Administrator, Division of Project Management

FED. ROAD DIV. NO.	STATE	FEDERAL AID PROJECT NO.	FISCAL YEAR	SHEET NO.	TOTAL SHEETS
	RI	STP-RESF(401) & STPG-HSIP(066)	2019	12	41

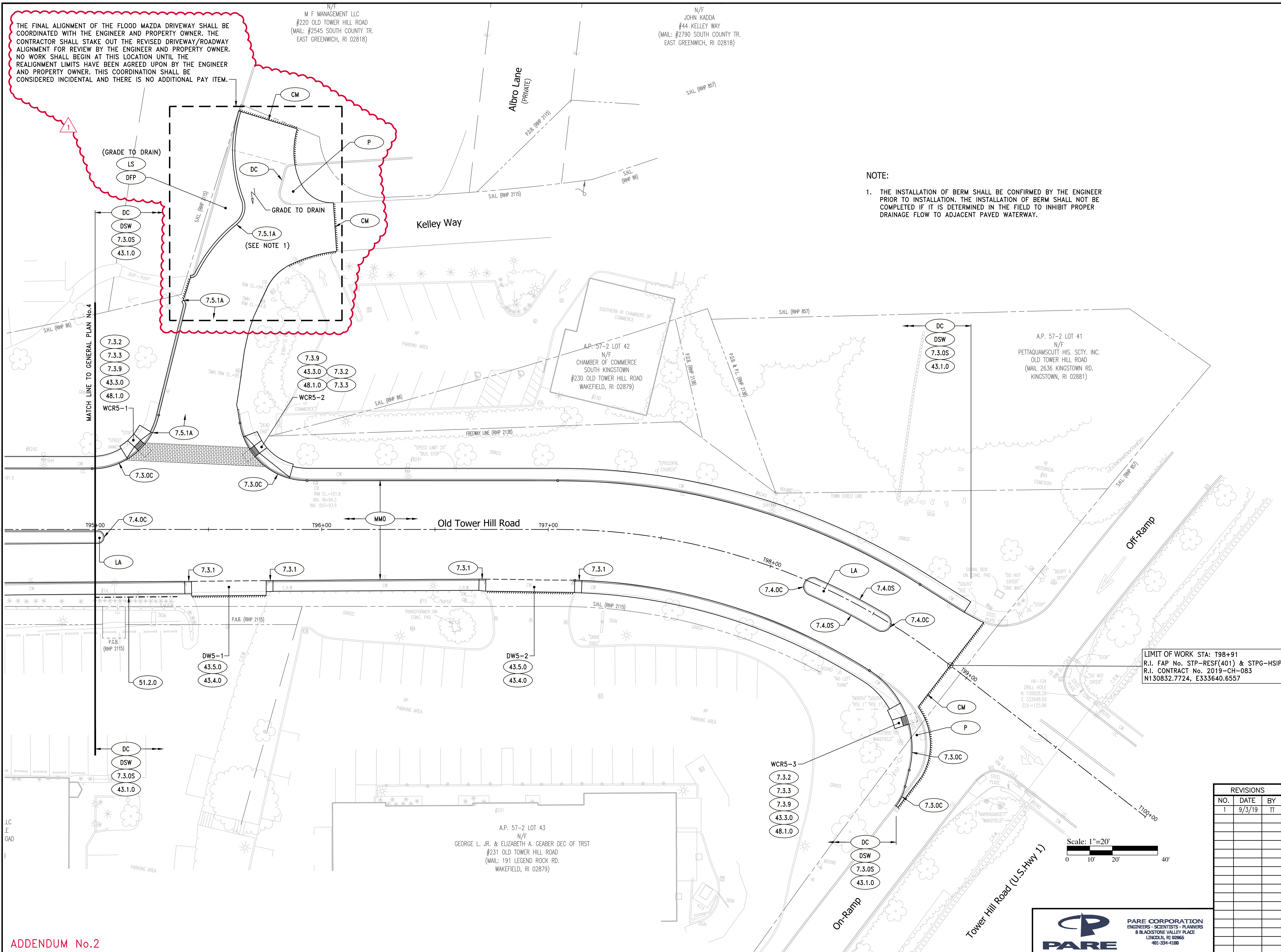
R-1

THE FINAL ALIGNMENT OF THE FLOOD MAZDA DRIVEWAY SHALL BE COORDINATED WITH THE ENGINEER AND PROPERTY OWNER. THE CONTRACTOR SHALL STAKE OUT THE REVISED DRIVEWAY/ROADWAY ALIGNMENT FOR REVIEW BY THE ENGINEER AND PROPERTY OWNER. NO WORK SHALL BEGIN AT THIS LOCATION UNTIL THE REALIGNMENT LIMITS HAVE BEEN AGREED UPON BY THE ENGINEER AND PROPERTY OWNER. THIS COORDINATION SHALL BE CONSIDERED INCIDENTAL AND THERE IS NO ADDITIONAL PAY ITEM.

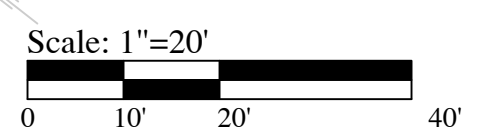
N/F
M F MANAGEMENT LLC
#220 OLD TOWER HILL ROAD
(MAIL: #2545 SOUTH COUNTY TR.
EAST GREENWICH, RI 02818)

N/F
JOHN KADDA
#44 KELLEY WAY
(MAIL: #2790 SOUTH COUNTY TR.
EAST GREENWICH, RI 02818)

NOTE:
1. THE INSTALLATION OF BERM SHALL BE CONFIRMED BY THE ENGINEER PRIOR TO INSTALLATION. THE INSTALLATION OF BERM SHALL NOT BE COMPLETED IF IT IS DETERMINED IN THE FIELD TO INHIBIT PROPER DRAINAGE FLOW TO ADJACENT PAVED WATERWAY.



LIMIT OF WORK STA: T98+91
R.I. FAP No. STP-RESF(401) & STPG-HSIP(066)
R.I. CONTRACT No. 2019-CH-083
N130832.7724, E333640.6557



REVISIONS		
NO.	DATE	BY
1	9/3/19	IT

RHODE ISLAND
DEPARTMENT OF TRANSPORTATION

**IMPROVEMENTS TO
OLD TOWER HILL ROAD**

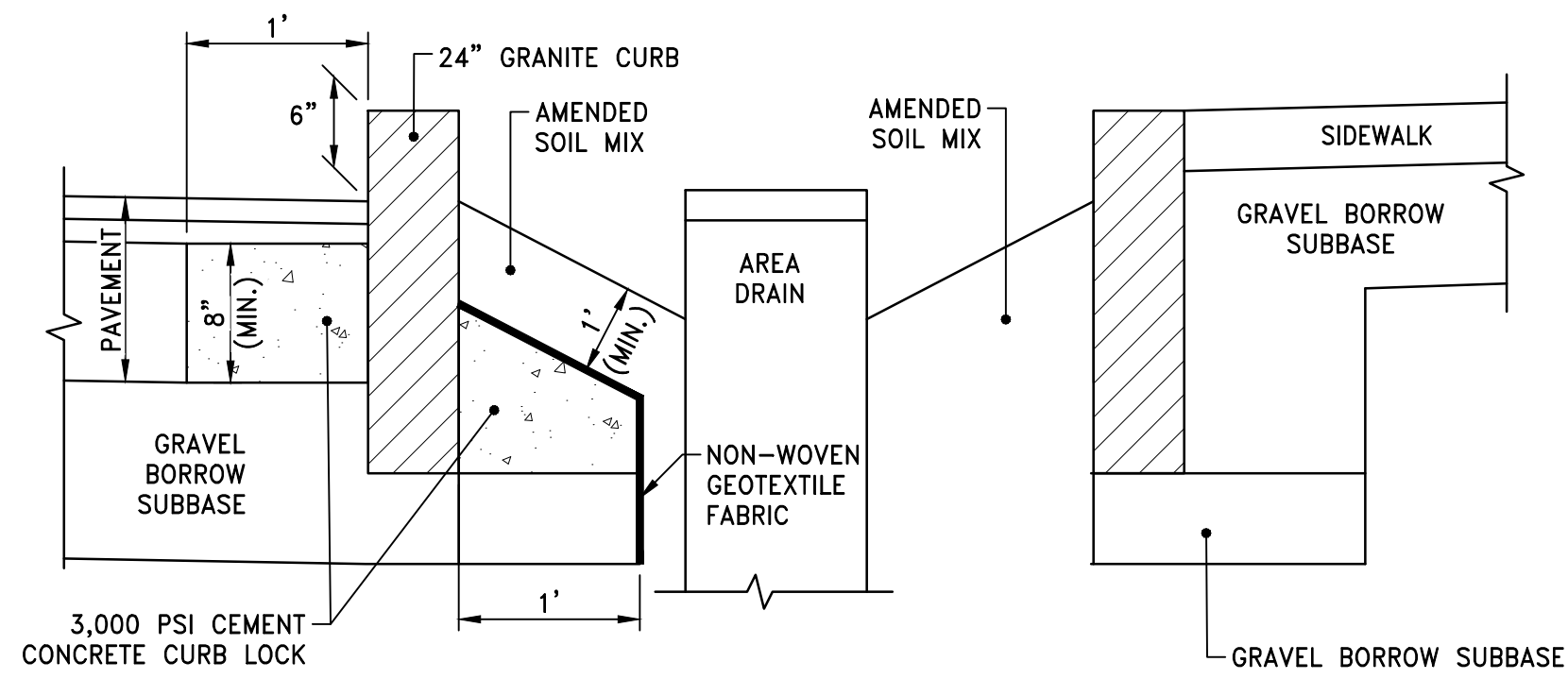
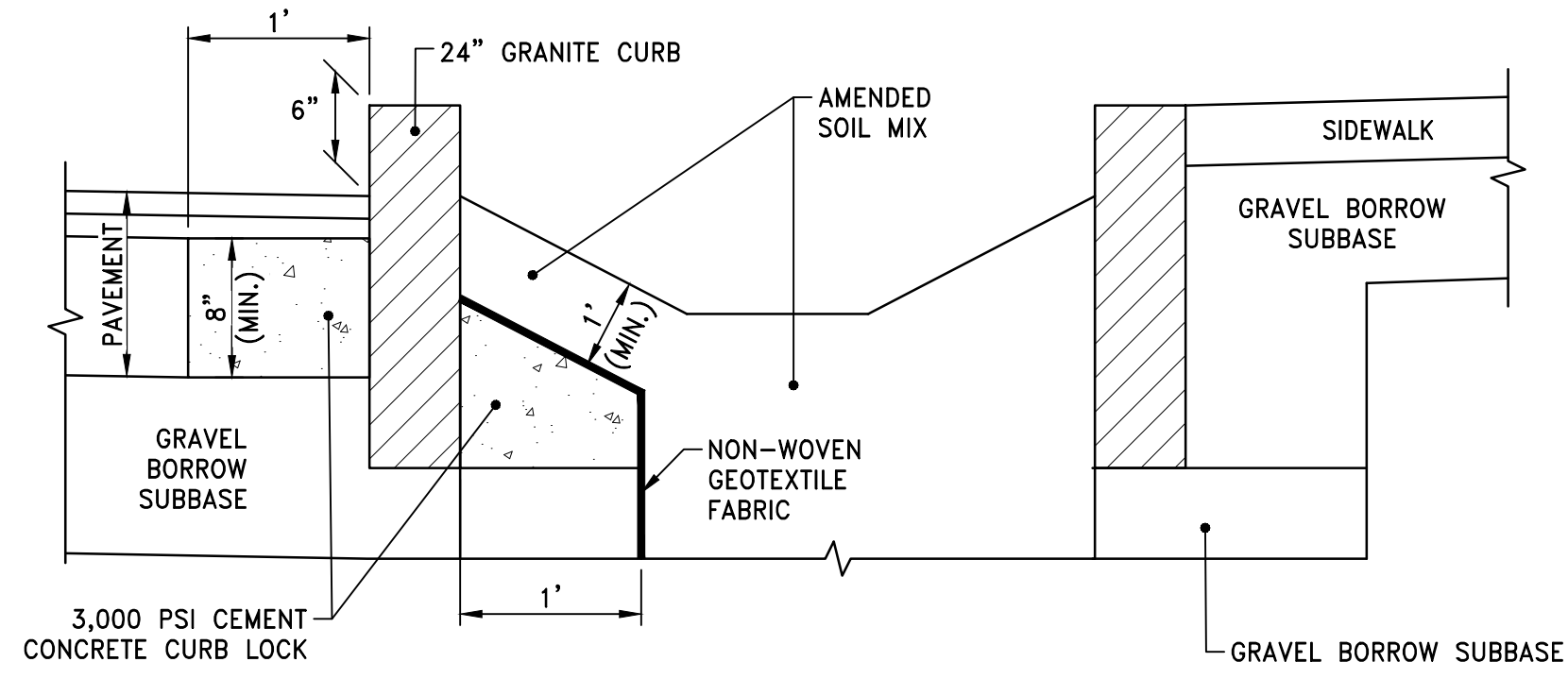
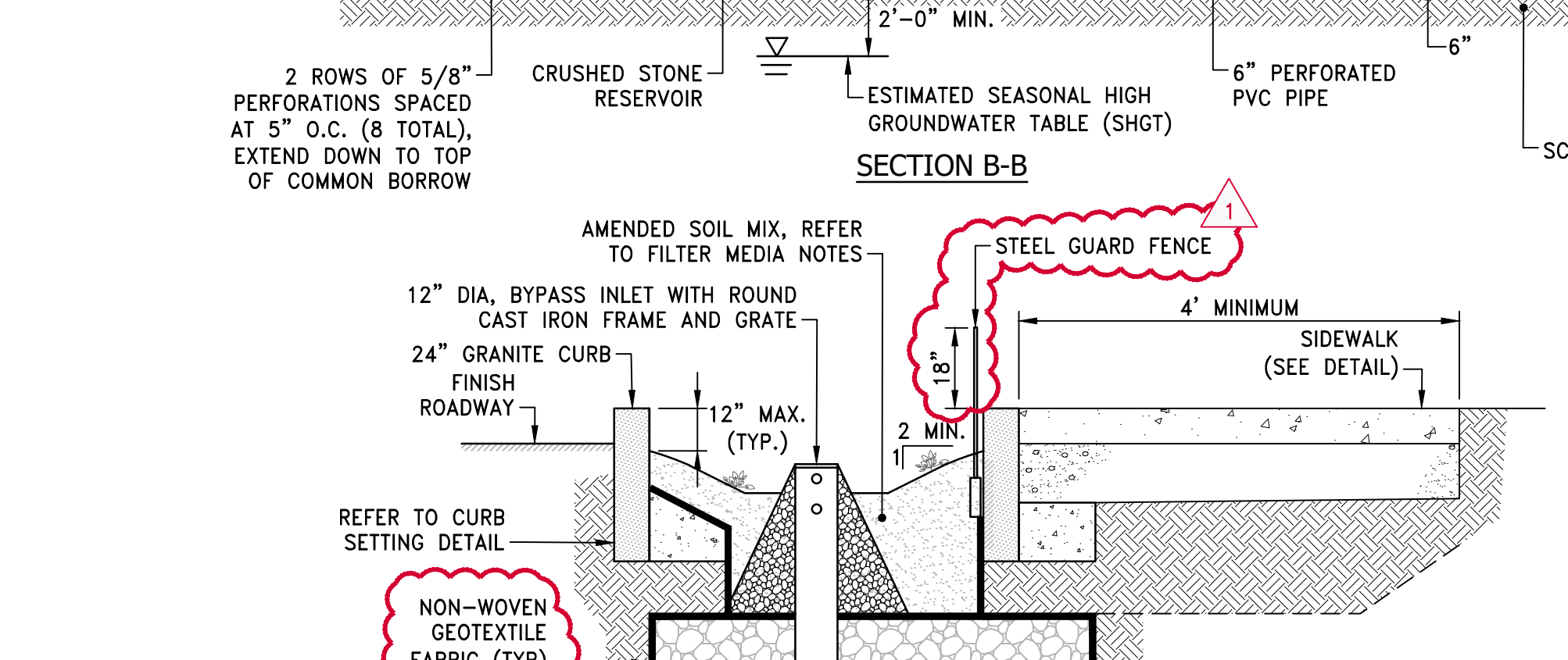
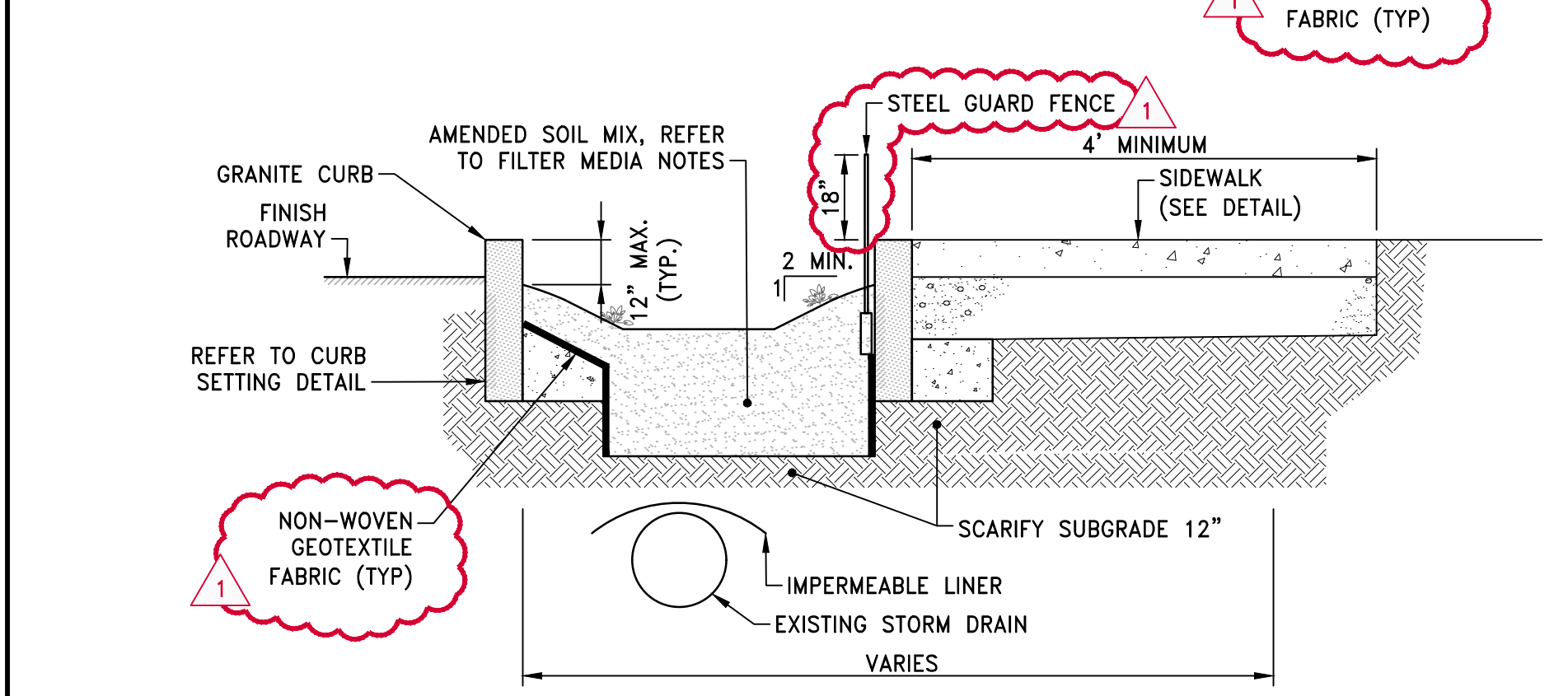
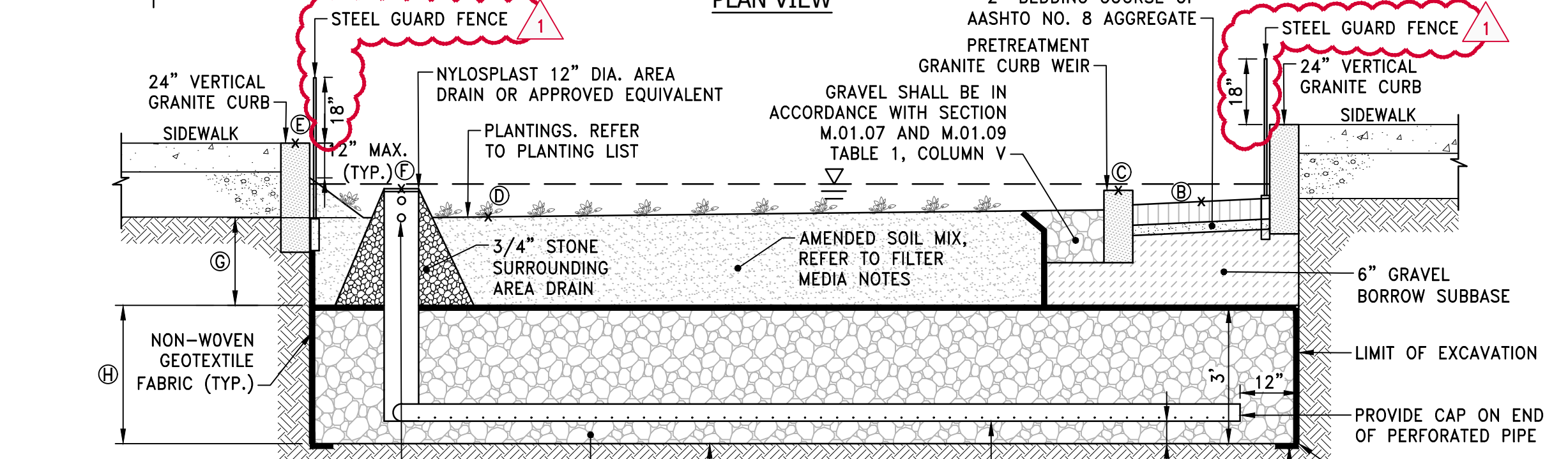
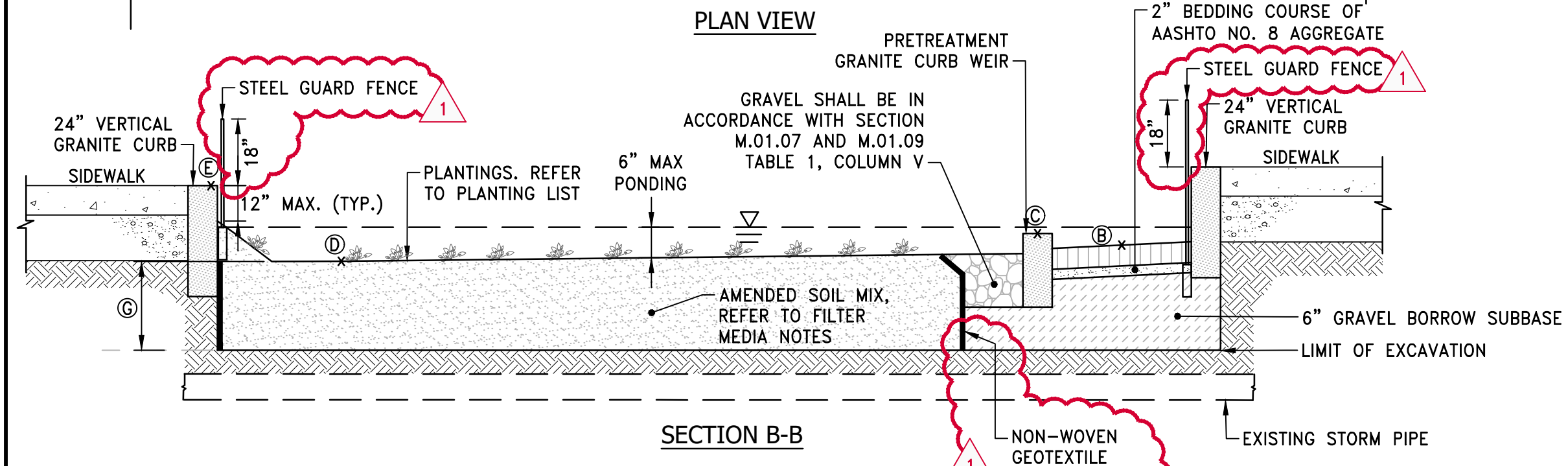
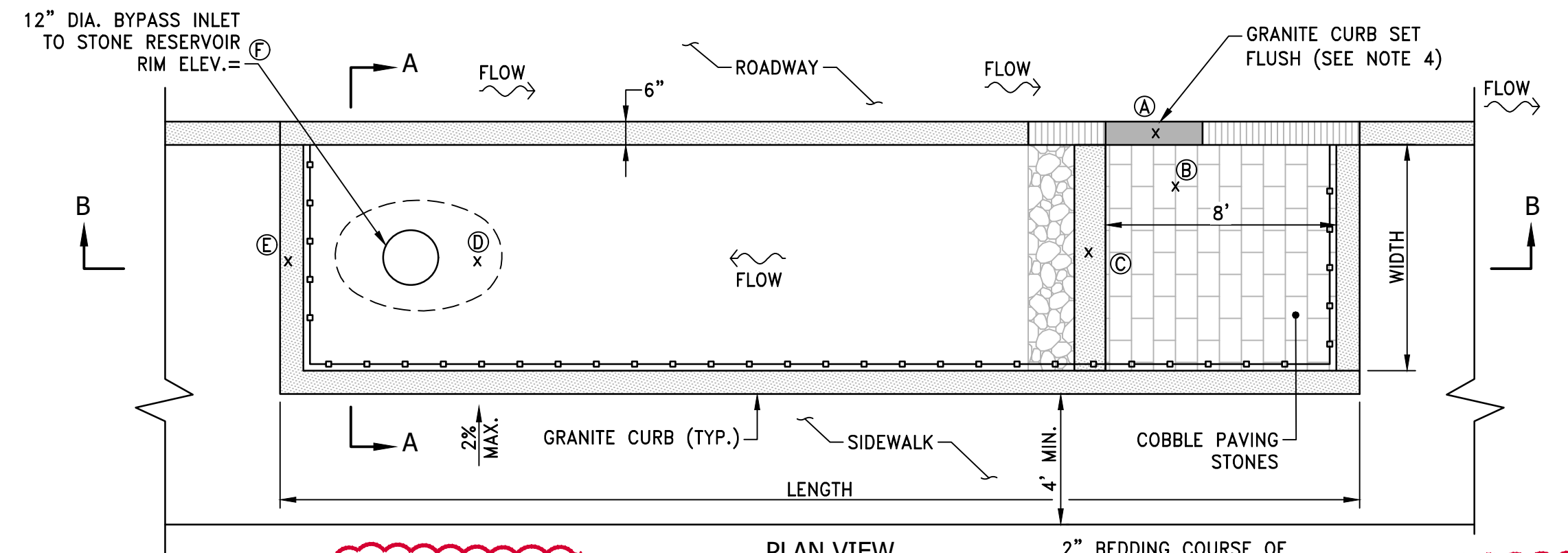
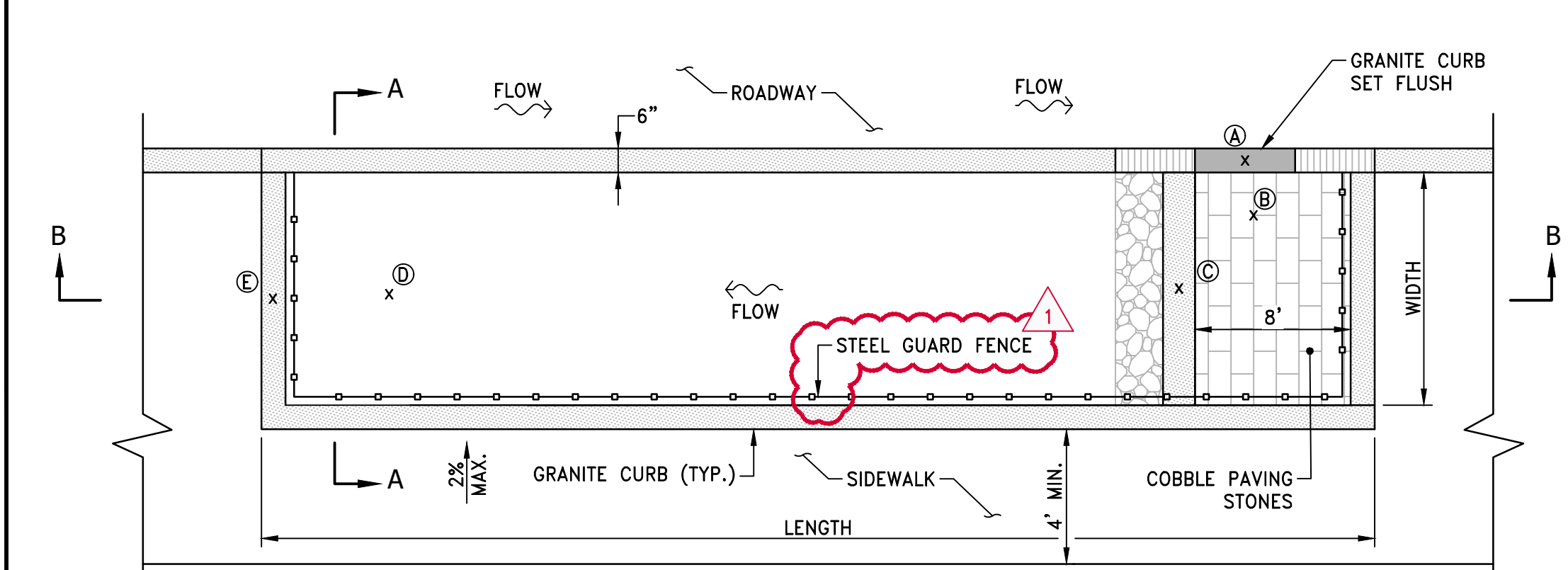
SOUTH KINGSTOWN, RHODE ISLAND

GENERAL PLAN No.5

CHECKED BY _____ DATE _____ SCALE 1"=20'

PARE CORPORATION
ENGINEERS - SCIENTISTS - PLANNERS
8 BLACKSTONE VALLEY PLACE
LITCHFIELD, RI 02865
401-334-1100

ADDENDUM No.2



BIORETENTION CURB INLET PLANTER NO. 1
NOT TO SCALE

BIORETENTION CURB INLET PLANTER NO. 2
NOT TO SCALE

FILTER MEDIA NOTES:

BIORETENTION SOIL: 60-70% SAND, 15-25% TOPSOIL OR LOAM, 15-25% ORGANIC MATTER (SEE SECTION 2.5.4 OF THE RIDOT LINEAR STORMWATER MANUAL - MIXTURE 1)

MULCH: 3 INCHES SHREDDED HARDWOOD BARK (AGED 6 MONTHS MINIMUM)

PLANTINGS: SEE LANDSCAPE PLANS

- NOTES:**
1. AREA DRAINS SHALL BE CUSTOM MANUFACTURED FOR THE PROJECT WITH THE INLETS AND OUTLETS REQUIRED.
 2. AREA DRAINS SHALL BE CONSTRUCTED OF HIGH DENSITY POLYETHYLENE.
 3. PAINT TOP 18" EXTERIOR OF DRAIN BASIN WITH KRYLON FUSION BLACK PAINT OR APPROVED EQUIVALENT.
 4. CURB INLET TO BE BLOCKED WITH SANDBAGS UNTIL PLANTS ARE ESTABLISHED.
 5. CURB SETTING SHALL BE IN ACCORDANCE WITH SECTION 906 OF THE R.I. STATE SPECIFICATIONS.

REVISIONS		
NO.	DATE	BY
1	9/3/19	IT

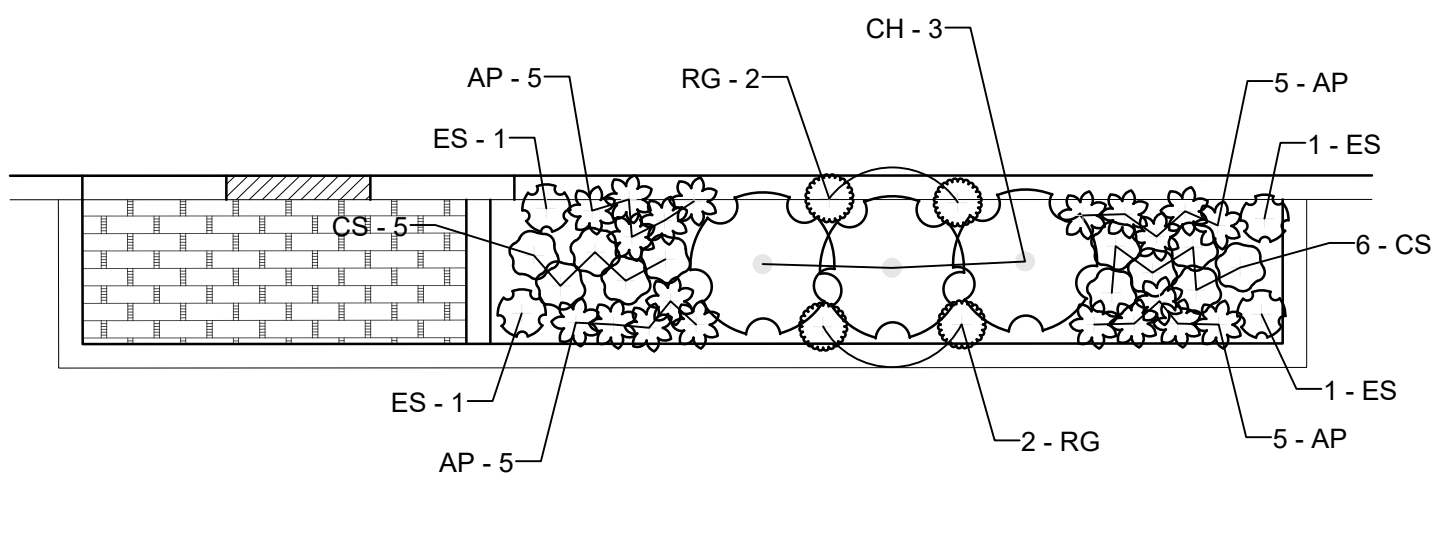
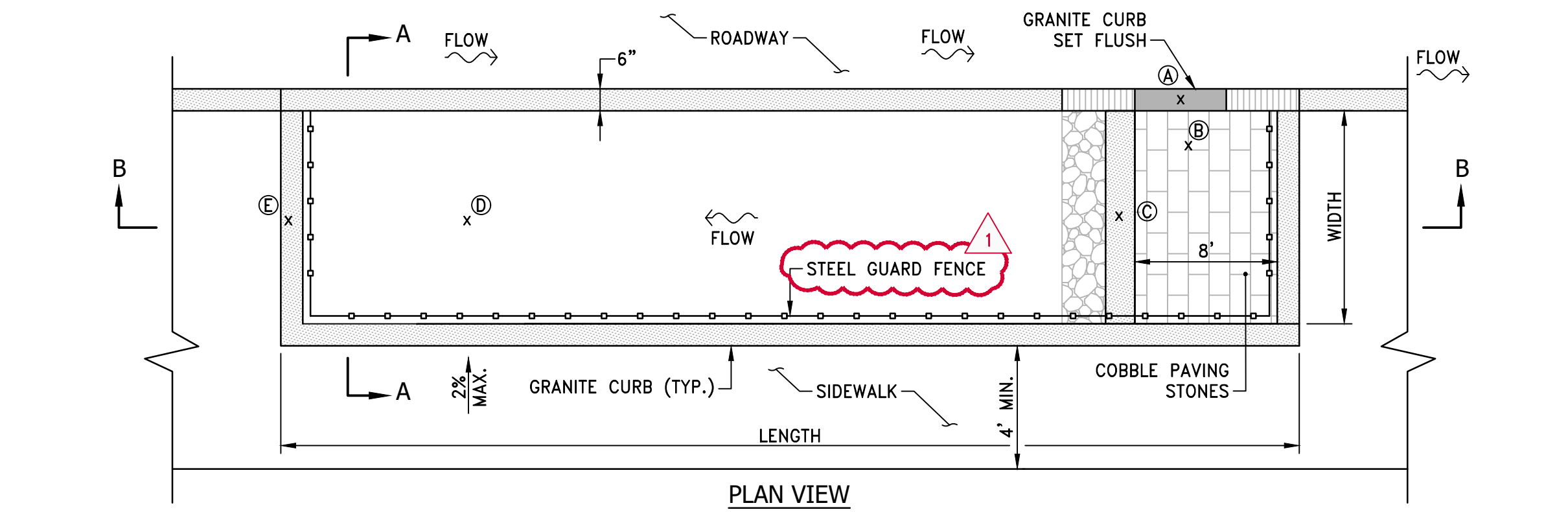
RHODE ISLAND
DEPARTMENT OF TRANSPORTATION

**IMPROVEMENTS TO
OLD TOWER HILL ROAD**

SOUTH KINGSTOWN, RHODE ISLAND

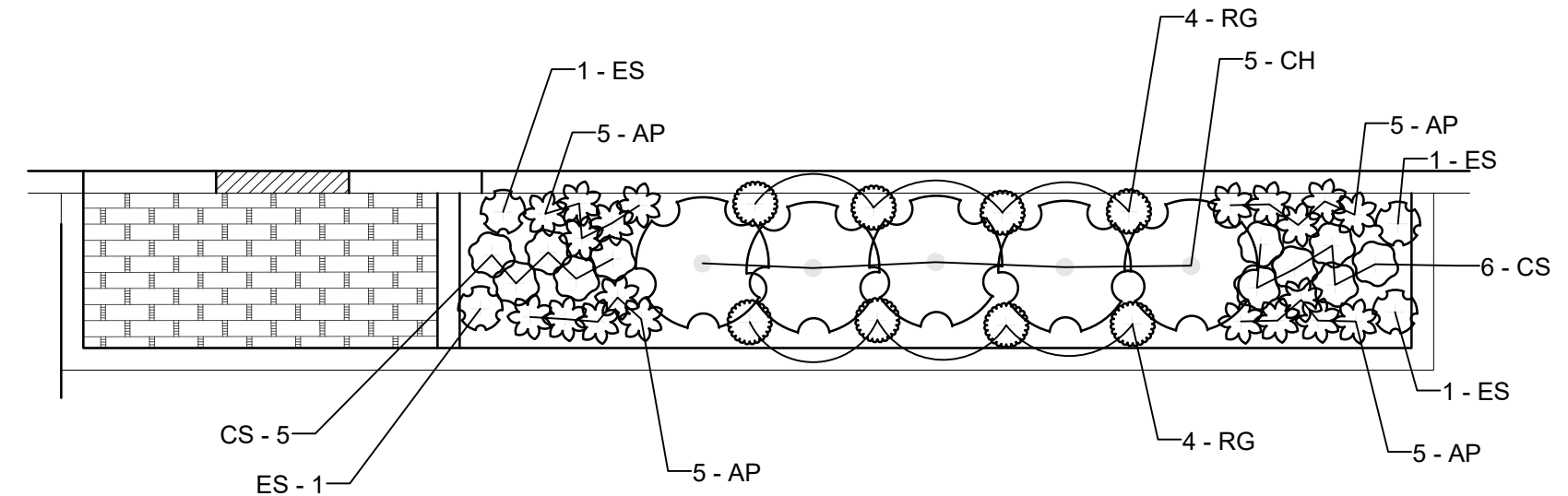
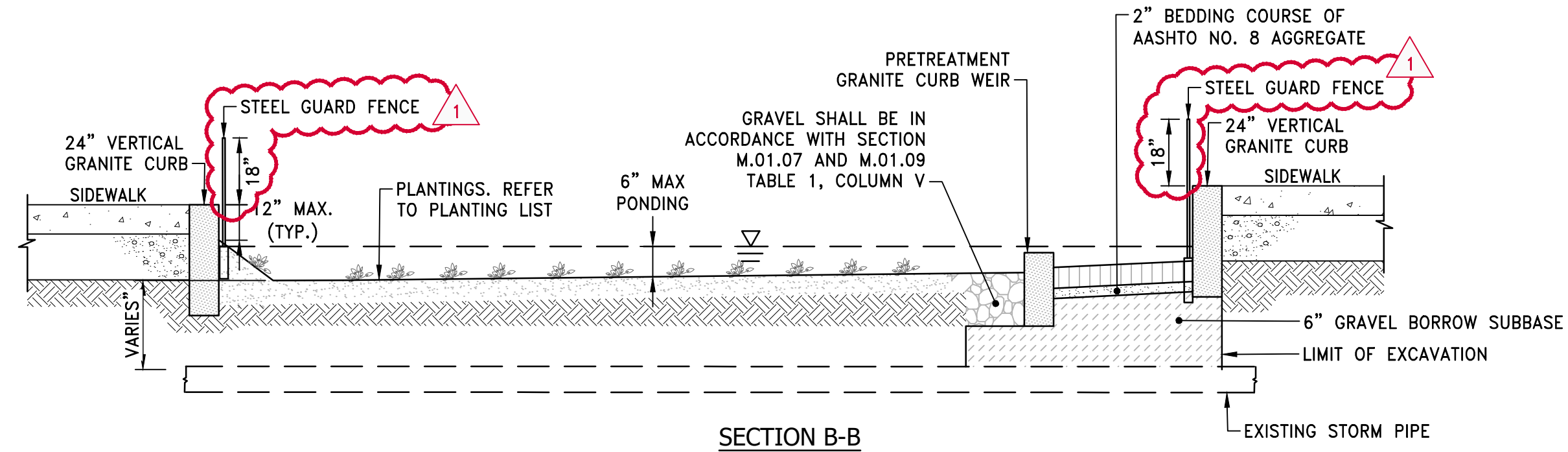
DETAILS No.3

CHECKED BY _____ DATE _____ SCALE 1"=20"



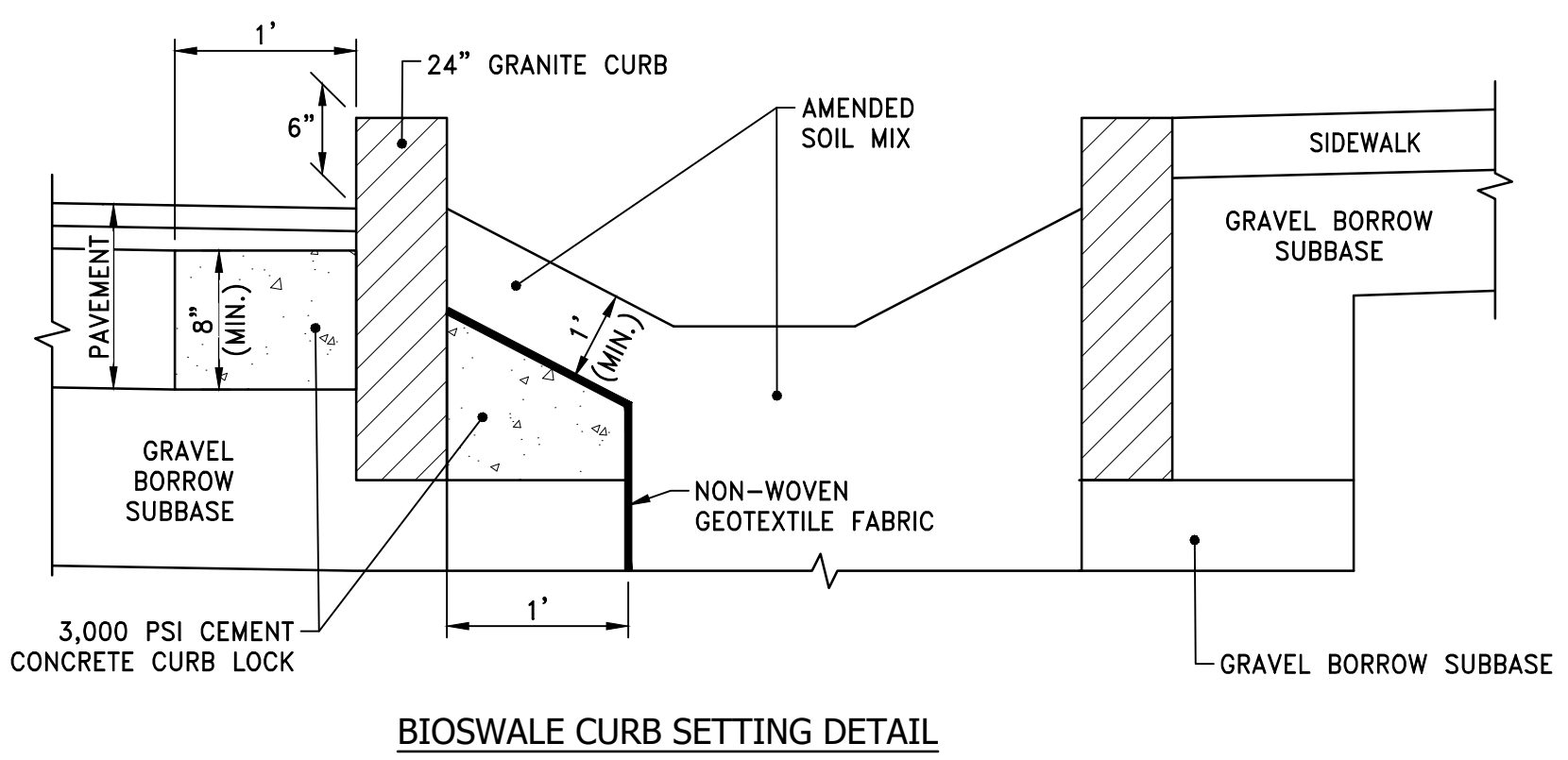
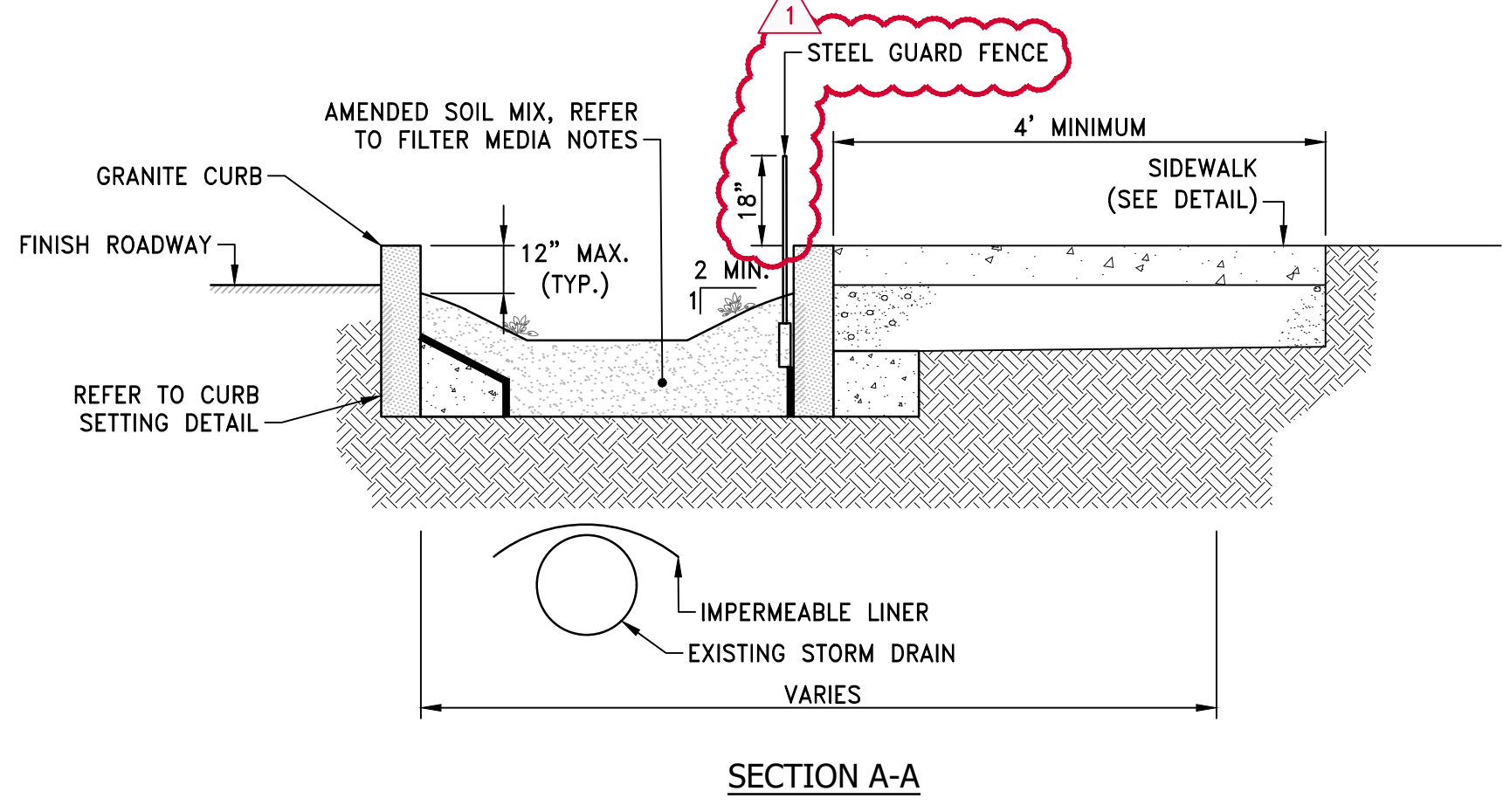
25' BIORETENTION CURB INLET PLANTING NO. 1, NO. 2 AND NO.3

NOT TO SCALE



30' BIORETENTION CURB INLET PLANTING NO. 1, NO. 2 AND NO.3

NOT TO SCALE

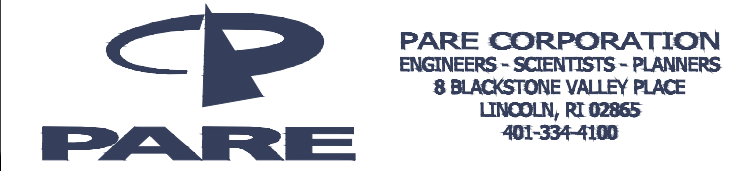


BIOSWALE CURB SETTING DETAIL
BIORETENTION CURB INLET PLANTER NO. 3
NOT TO SCALE

BIO SWALE #	BIOSWALE STA	DEPTH OF COVER OVER EXISTING DRAIN	DETAIL #	SWALE DIMENSIONS			BIORETENTION		CRUSHED STONE RESERVOIR DIMENSIONS		ELEVATIONS					
				LENGTH (FT)	WIDTH (FT)	DEPTH (FT)	BIO DEPTH (FT)	DEPTH (FT)	LENGTH (FT)	WIDTH (FT)	APPROX. GUTTER INLET ELEV.	APPROX. BOTTOM ELEV.	APPROX. SEDIMENT FOREBAY WEIR ELEV.	MAX DEPTH (BELOW SW)	APPROX. MAX ELEVATION AT UPSTREAM SIDEWALK	RIM ELEVATION
1	80+15 RT	2.95	DETAIL 1	25.00	3.50	0.50	2.00	N/A	N/A	N/A	58.00	58.00	58.25	1.76	59.76	N/A
2	81+99 RT	4.35	DETAIL 1	30.00	3.50	0.50	3.00	N/A	N/A	N/A	63.60	63.10	63.35	2.03	65.13	N/A
3	82+60 RT	4.60	DETAIL 1	30.00	3.50	0.50	3.00	N/A	N/A	N/A	65.70	65.20	65.45	2.03	67.23	N/A
4	84+03 RT	4.25	DETAIL 1	30.00	3.50	0.50	3.00	N/A	N/A	N/A	69.20	68.70	68.95	1.48	70.18	N/A
5	84+38 RT	4.15	DETAIL 1	30.00	3.50	0.50	3.00	N/A	N/A	N/A	69.80	69.30	69.55	1.48	70.78	N/A
6	86+69 RT	N/A	DETAIL 2	25.00	3.00	0.50	3.00	3.00	25.00	5.00	71.25	70.75	71.00	1.15	71.90	71.15
7	87+00 RT	N/A	DETAIL 2	25.00	3.00	0.50	3.00	3.00	25.00	5.00	71.40	70.90	71.15	1.15	72.05	71.30
8	87+80 RT	6.65	DETAIL 2	30.00	3.50	0.50	3.00	2.00	30.00	5.00	71.70	71.20	71.45	1.17	72.37	71.60
9	88+84 RT	1.95	DETAIL 3	30.00	3.50	0.50	N/A	N/A	N/A	N/A	72.40	71.90	72.15	1.31	73.21	N/A
10	89+31 RT	1.75	DETAIL 3	30.00	3.50	0.50	N/A	N/A	N/A	N/A	72.80	72.30	72.55	1.31	73.61	N/A
11	83+35 LT	5.50	DETAIL 1	30.00	3.50	0.50	3.00	N/A	N/A	N/A	67.70	67.20	67.45	1.71	68.91	N/A
12	84+11 LT	6.45	DETAIL 2	30.00	3.50	0.50	3.00	2.00	30.00	5.00	69.30	68.80	69.05	1.71	70.51	69.20
13	85+30 LT	6.15	DETAIL 2	30.00	3.50	0.50	3.00	1.50	30.00	5.00	70.35	69.85	70.10	1.16	71.01	70.25
14	85+71 LT	5.85	DETAIL 1	30.00	3.50	0.50	3.00	N/A	N/A	N/A	70.50	70.00	70.25	1.16	71.16	N/A
15	86+11 LT	5.50	DETAIL 1	30.00	3.50	0.50	3.00	N/A	N/A	N/A	70.85	70.35	70.60	1.16	71.51	N/A
16	86+95 LT	3.75	DETAIL 1	30.00	3.50	0.50	2.00	N/A	N/A	N/A	71.30	70.80	71.05	1.21	72.01	N/A
17	87+35 LT	3.35	DETAIL 1	30.00	3.50	0.50	1.50	N/A	N/A	N/A	71.60	71.10	71.35	1.21	72.31	N/A
18	87+78 LT	2.45	DETAIL 3	25.00	3.50	0.50	N/A	N/A	N/A	N/A	71.75	71.25	71.50	1.17	72.42	N/A

FILTER MEDIA NOTES:
BIORETENTION SOIL: 60-70% SAND, 15-25% TOPSOIL OR LOAM, 15-25% ORGANIC MATTER (SEE SECTION 2.5.4 OF THE RIDOT LINEAR STORMWATER MANUAL - MIXTURE 1)
MULCH: 3 INCHES SHREDDED HARDWOOD BARK (AGED 6 MONTHS MINIMUM)
PLANTINGS: SEE LANDSCAPE PLANS

- NOTES:**
- AREA DRAINS SHALL BE CUSTOM MANUFACTURED FOR THE PROJECT WITH THE INLETS AND OUTLETS REQUIRED.
 - AREA DRAINS SHALL BE CONSTRUCTED OF HIGH DENSITY POLYETHYLENE.
 - PAINT TOP 18" EXTERIOR OF DRAIN BASIN WITH KRYLON FUSION BLACK PAINT OR APPROVED EQUIVALENT.
 - CURB INLET TO BE BLOCKED WITH SANDBAGS UNTIL PLANTS ARE ESTABLISHED.
 - CURB SETTING SHALL BE IN ACCORDANCE WITH SECTION 906 OF THE R.I. STATE SPECIFICATIONS.



REVISIONS		
NO.	DATE	BY
1	9/3/19	IT

**RHODE ISLAND
DEPARTMENT OF TRANSPORTATION**

**IMPROVEMENTS TO
OLD TOWER HILL ROAD**

SOUTH KINGSTOWN, RHODE ISLAND

DETAILS No.4

CHECKED BY _____ DATE _____ SCALE 1"=20'

JOB SPECIFIC

CODE 711.9901 BIORETENTION CURB INLET PLANTER No. 1
CODE 711.9902 BIORETENTION CURB INLET PLANTER No. 2
CODE 711.9903 BIORETENTION CURB INLET PLANTER No. 3

DESCRIPTION: The work in these items consists of constructing bioretention curb inlet planters in accordance with the Plans or as directed by the Engineer. Plantings located with the bioretention curb inlet planters are not included as part of this item and shall be paid for under their respective item number.

MATERIALS: Materials used in constructing bioretention curb inlet planters shall conform to the requirements of the Standard Specifications for the following:

Granite Curbing and 3'-0" Granite Transition Curbs shall be in accordance with Section 906 and M.09.01 of the Standard Specifications. The top surface shall be dressed by saw, and the remainder may be quarry split. Minimum length of straight pieces shall be 3 feet. Curbing shall be dimensionally in accordance with the RIDOT Standard 7.3.0 and 7.3.1, except shall have a vertical dimension of 24-inches to accommodate the additional reveal along the depressed bioretention curb inlet planter. Curbing for overflow weirs may be in accordance with the dimensions displayed in RIDOT Standard 7.3.0.

Class A Portland Cement Concrete for curb lock shall be in accordance with Section 601 of the Standard Specifications.

Amended soil mix shall be in accordance with the plans AND Section 2.5.4 of the RIDOT Linear Stormwater Manual (Mixture 1). The soil shall consist of 60-70% Sand (ASTM C-33), 15-25% Topsoil (RIDOT Std. M.18.01), and 15-25% Organic Matter. Compost shall not be used as organic matter. Acceptable organic soil amendments or matter shall include sphagnum peat, wood derivative, or media amendments such as zero-valent iron and/or drink water treatment residuals (alum) to enhance phosphorus sorption. The mixture shall have a pH of 5.2 to 7.0.

Crushed Stone for gravel sump and sediment forebay weir dissipation shall be in accordance with section M.01.07 -Filter Stone and M.01.09, Table 1, Column V of the Standard Specifications.

Area Drains shall be formed of PVC pipe stock meeting ASTM D1784 utilizing a thermoforming process to reform the pipe stock to the specified configuration. Drainage pipe connection stubs shall be manufactured from PVC pipe stock and formed to provide a watertight connection with the specified pipe system. Joints shall use elastomeric seals and conform to ASTM D3212, latest revision. Flexible elastomeric seals shall conform to ASTM F477. Frame and grate shall be 12" dia. ductile iron grate made specifically for each 12" diameter area drain. Casting shall conform to ASTM A536 grade 70-50-05. Area drains shall be rated to withstand HS-20 loading criteria and construction traffic. Area drains shall be equipped with a sump and outlet tee as specified on the plans and details. Perforations shall be 5/8" holes on 5" centers.

Subdrains shall be 4-inch PVC perforated pipe and conform to ASTM/ANSI D 2759 or ASTM F 810. Perforations shall be 5/8" holes on 5" centers. The pipe and fittings shall be homogeneous throughout and free from visible cracks, foreign inclusion or other injurious defects. The pipe shall be as uniform as commercially practical in color, capacity, density and other physical properties. Joints shall be bell and spigot. Pipe shall be SDR-35 PVC pipe, the bell shall consist of an integral wall section with a solid cross section rubber ring factory-assembled, securely locked in place to prevent displacement. Joints shall conform to ASTM Standard D 3212. All fittings and accessories shall have dimensions as recommended by the manufacturer and have bell and/or spigot configurations compatible with that of the pipe. Pipe shall pass impact resistance test in accordance with ASTM D 2444 and minimum pipe stiffness test at 5% deflection in accordance with ASTM D 2412.

Geotextile Fabric shall be non-woven, and comply with section 703.02.2 of the Standard Specifications and shall be listed on the RIDOT Approved Materials List.

Impermeable Liners shall be 30 mil HDPE or PVC liner. Barrier shall be a PVC membrane of sufficient tensile strength to withstand perforation including cracking, tearing, and breaking during installation and backfill.

Cobble Paving Stone shall be salt and pepper granite and conform to Section M.10.05 of the Standard Specifications.

Steel Guard Fence shall be 18" tall steel panels and posts that meet the requirements of ASTM A653/A653 M with a minimum yield strength of 45,000 psi and will be zinc (hot-dip galvanized) coated. Material for pickets shall be 3/4" square x 18 Ga. tubing. Rails shall be steel channel, 1.5" x 1.4375" x 14 Ga. Picket holes will be spaced at 3.5" o.c. The manufactured fence system shall be capable of meeting the vertical load, horizontal load, and infill performance requirements for Commercial weight fences under ASTM F2408. The manufactured panels and posts shall be subjected to an inline electrode position coating process consisting of a multi-stage pretreatment/wash, followed by a duplex application of an epoxy primer and an acrylic topcoat. The minimum cumulative coating thickness of epoxy and acrylic shall be 2 mils (0.058 mm). The color shall be black. The coated panels and posts shall be capable of meeting the performance requirements for each quality of ASTM F2408.

CONSTRUCTION METHODS: Construction methods shall conform to all relevant sections of the Standard Specifications, including Section 200 Earthwork and Erosion Control, Section 600 Concrete, Section 700 Drainage and Selected Utility Accessories, Section 906 Curbing and Roadways, and Part M Materials.

METHOD OF MEASUREMENT: "Bioretention Curb Inlet Planter No. 1", "Bioretention Curb Inlet Planter No. 2", and "Bioretention Curb Inlet Planter No. 3" will be measured by each planter actually constructed in accordance with the Plan or as directed by the Engineer.

BASIS OF PAYMENT: The accepted quantities of “Bioretention Curb Inlet Planter No. 1”, “Bioretention Curb Inlet Planter No. 2”, and “Bioretention Curb Inlet Planter No. 3” will be paid for by the unit each as listed in the Proposal. The prices so-stated constitute full and complete compensation for all labor, materials and equipment for constructing bioretention curb inlet planters, including excavation to a depth appropriate to receive the specified materials, and the legal disposal of all surplus excavated and/or unsuitable materials, scarify subgrade; installing granite curbing, vertical, transitions and flush, along with all required curb lock; installation of cobble paving stones and bedding, granite weirs, and stone for dissipation; installation of amended soil mix, and gravel sump; installation of PVC area drains, grates, and subdrain; installation of non-woven geotextile fabric, and impermeable liners as specified; and all incidentals required to finish the work, complete and accepted by the Engineer.

Table of Contents - Distribution of Quantities

Project Name - Old Tower Hill Rd (Rt 108 - Rt 1)

Estimate Name - Addendum 2

R.I. Contract No. - 2019-CH-083

FAP Nos: STPG-HSIP(066), STP-RESF(401)

ItemCode	Description	Page
201.0321	CLEARING AND GRUBBING	1
201.0402	REMOVE AND DISPOSE CONCRETE CURB	1
201.0403	REMOVE AND DISPOSE SIDEWALKS	2
201.0409	REMOVE AND DISPOSE FLEXIBLE PAVEMENT	2
201.0421	REMOVE AND DISPOSE BITUMINOUS CURB	4
201.0428	REMOVE AND DISPOSE FRAME AND GRATE OR FRAME AND COVER	4
201.0610	REMOVE AND DISPOSE DIRECTIONAL, WARNING, REGULATORY, SERVICE, AND STREET SIGNS	4
201.9901	REMOVE AND SALVAGE TRAFFIC SIGNAL EQUIPMENT AT TRAFFIC SIGNAL NO. 659	5
201.9902	REMOVE, STOCKPILE, AND RESET BUS SHELTER	5
201.9903	REMOVE AND DISPOSE GUTTER INLET	5
201.9904	REMOVE, STOCKPILE, AND RESET FRAME AND GRATE	6
202.0100	EARTH EXCAVATION	6
202.0201	ROCK EXCAVATION MECHANICAL	7
204.0100	TRIMMING AND FINE GRADING	7
206.0301	COMPOST FILTER SOCK	7
209.9901	INLET SEDIMENT CONTROL DEVICE	8
212.2100	MAINTENANCE AND CLEANING OF EROSION AND POLLUTION CONTROLS	9
302.0100	GRAVEL BORROW SUBBASE COURSE	9
401.1000	CLASS 19.0 HMA	9
401.2100	MODIFIED CLASS 12.5 HMA	9
403.0300	ASPHALT EMULSION TACK COAT	10
601.0300	CLASS A PORTLAND CEMENT CONCRETE	10
701.5312	12 INCH DUCTILE IRON WATER PIPE CLASS 52, PUSH-ON JOINT	10
701.8151	CURB STOP BOX	11
702.0511	FRAME AND COVER STANDARD 6.1.0	11
702.0517	FRAME AND GRATE, STANDARD 6.3.2	11
702.0542	GRANITE APRON STONE 5FT. STANDARD 7.3.7	12
702.0543	GRANITE APRON STONE 38'' STANDARD 7.3.8	12
702.0713	PRECAST CONCRETE DROP INLET WITH APRON STONE STANDARD 4.5.1	13
704.0100	RECONSTRUCT CATCH BASIN/CORBEL CONES	13
704.0200	RECONSTRUCT MANHOLE/CORBEL CONES	14
704.9901	RECONSTRUCT CATCH BASIN - TYPE 1	14
704.9902	RECONSTRUCT CATCH BASIN - TYPE 2	15
707.1000	ADJUST SANITARY MANHOLE	15
707.1900	ADJUST FRAME & COVER TO GRADE	15
707.2000	ADJUST FRAME AND GRATE TO GRADE	16
708.9040	CLEANING AND FLUSHING PIPE ALL SIZES	16
708.9041	CLEANING CATCH BASINS ALL TYPES AND SIZES	18
708.9042	CLEANING MANHOLES ALL TYPES AND SIZES	19
711.9901	BIORETENTION CURB INLET PLANTER NO. 1	19
711.9902	BIORETENTION CURB INLET PLANTER NO. 2	20
711.9903	BIORETENTION CURB INLET PLANTER NO. 3	20
711.9904	HYDRODYNAMIC SEPARATOR RETROFIT	20
712.0100	WATER GATE BOX	20
712.0200	GAS GATE BOX	21
905.0110	PORTLAND CEMENT SIDEWALK MONOLITHIC STANDARD 43.1.0	21
905.0115	PORTLAND CEMENT CONCRETE DRIVEWAY STANDARD 43.5.0	22
905.9901	FURNISH AND INSTALL DECORATIVE CROSSWALK	23
906.0100	SLOPE FACED GRANITE CURB - QUARRY SPLIT STRAIGHT STANDARD 7.4.0	24

Table of Contents - Distribution of Quantities

Project Name - Old Tower Hill Rd (Rt 108 - Rt 1)

Estimate Name - Addendum 2

R.I. Contract No. - 2019-CH-083

FAP Nos: STPG-HSIP(066), STP-RESF(401)

ItemCode	Description	Page
906.0101	SLOPE FACED GRANITE CURB - QUARRY SPLIT CIRCULAR STANDARD 7.4.0	24
906.0110	GRANITE CURB, QUARRY SPLIT STRAIGHT, STANDARD 7.3.0	25
906.0111	GRANITE CURB, QUARRY SPLIT CIRCULAR, STANDARD 7.3.0	27
906.0118	6' GRANITE TRANSITION CURB, QUARRY SPLIT SPECIAL TRANSITION STANDARD 7.3.2	28
906.0119	3' GRANITE TRANSITION CURB STANDARD 7.3.1	29
906.0120	GRANITE WHEELCHAIR RAMP CURB STANDARDS 7.3.3, 43.3.0 AND 43.3.1	30
906.0130	GRANITE RAMP STONE STRAIGHT STANDARD 7.3.9	31
906.0561	CEMENT CONCRETE EDGING 18 INCH LOT CURB STANDARD 7.2.3	31
906.0602	BITUMINOUS BERM STANDARD 7.5.1	31
907.0100	WATER FOR DUST CONTROL	32
914.5010	FLAGPERSONS	32
914.5020	FLAGPERSONS - OVERTIME	32
919.0101	TEST PITS	32
922.0100	TEMPORARY CONSTRUCTION SIGNS STANDARD 29.1.0 AND 27.1.1	32
923.0105	DRUM BARRICADE STANDARD 26.2.0	33
923.0120	PLASTIC PIPE BARRICADE STANDARD 26.3.0	33
923.0200	FLUORESCENT TRAFFIC CONES STANDARD 26.1.0	33
923.9901	LONGITUDINAL PEDESTRIAN CHANNELIZING DEVICES	34
925.0112	PORTABLE CHANGEABLE MESSAGE SIGN	34
928.0500	SHADOW OR ADVANCE WARNING VEHICLE WITH IMPACT ATTENUATOR AND FLASHING ARROW BOARD	34
929.0110	FIELD OFFICE	34
931.0110	CLEANING AND SWEEPING PAVEMENT	34
932.0100	CUTTING AND MATCHING ASPHALT	34
932.0200	FULL-DEPTH SAWCUT OF BITUMINOUS PAVEMENT	35
932.0220	FULL DEPTH SAWCUT OF BITUMINOUS SIDEWALK/DRIVEWAY	36
932.0230	FULL DEPTH SAWCUT OF PORTLAND CEMENT CONCRETE SIDEWALK/DRIVEWAY	37
935.0400	REMOVING BITUMINOUS PAVEMENT BY MICRO MILLING	37
936.0100	MOBILIZATION AND DEMOBILIZATION	37
937.0200	MAINTENANCE AND MOVEMENT TRAFFIC PROTECTION	38
942.0200	DETECTABLE WARNING PANEL STANDARD 48.1.0	38
L01.0102	LOAM BORROW 4 INCHES DEEP	38
L01.9901	PINE BARK MULCH (3" DEPTH)	39
L01.9902	** ITEM DELETED **	40
L02.0102	RESIDENTIAL SEEDING (TYPE 2)	40
L06.9901	ACER SACCHARUM 'SUGAR MAPLE'	40
L06.9902	CRATAEGUS VIRIDIS 'WINTER KING'	40
L06.9903	ASTER NOVAE-ANGLIAE	40
L06.9904	CAREX PENNSYLVANICA 'PENNSYLVANIA SEDGE'	40
L06.9905	CLETHRA ALNIFOLIA 'HUMMINGBIRD'	41
L06.9906	ECHNACEA PURPUREA 'RUBY STAR'	41
L11.0102	TREE PLANT PROTECTION DEVICE STANDARD 51.1.0	41
L11.0103	SHRUB PLANT PROTECTION DEVICE STANDARD 51.2.0	42
T04.5302	14 AWG 2 CONDUCTOR TWISTED SHIELDED CABLE	42
T04.5303	14 AWG 3 CONDUCTOR CABLE	42
T04.5305	14 AWG 5 CONDUCTOR CABLE	43
T05.0400	BREAK INTO EXISTING HANDHOLE	43
T05.1030	ADJUST HANDHOLE TO GRADE	43
T06.5130	3 INCH SCHEDULE 40 POLYVINYL CHLORIDE PLASTIC CONDUIT - UNDERGROUND	44

Table of Contents - Distribution of Quantities

Project Name - Old Tower Hill Rd (Rt 108 - Rt 1)

Estimate Name - Addendum 2

R.I. Contract No. - 2019-CH-083

FAP Nos: STPG-HSIP(066), STP-RESF(401)

ItemCode	Description	Page
T11.9901	15 FOOT GAL. STEEL MAST ARM TRAFFIC SIGNAL POST AND FOUNDATION	44
T12.9901	MODIFY TRAFFIC SIGNAL CONTROLLER AND CABINET	44
T13.1000	TRAFFIC DETECTORS-LOOP, STANDARD 19.6.0	44
T13.8210	ACCESSIBLE PEDESTRIAN DETECTOR - PUSHBUTTON WITH SIGN	45
T14.3513	1 WAY 3 SECTION MAST ARM MOUNTED SIGNAL HEAD 12 INCH	45
T14.9901	RETROFIT EXISTING PEDESTRIAN SIGNAL WITH COUNTDOWN TIMER	45
T14.9902	ONE-WAY BRACKET MOUNTED LED PEDESTRIAN SIGNAL WITH COUNTDOWN TIMER 12-INCH	45
T15.0100	DIRECTIONAL REGULATORY AND WARNING SIGNS	46
T20.0704	4 INCH WHITE WATERBORNE PAINT PAVEMENT MARKINGS	47
T20.0706	6 INCH WHITE WATERBORNE PAINT PAVEMENT MARKINGS	48
T20.0712	12 INCH WHITE WATERBORNE PAINT PAVEMENT MARKINGS	49
T20.0904	4 INCH YELLOW WATERBORNE PAINT PAVEMENT MARKINGS	50
T20.0906	6 INCH YELLOW WATERBORNE PAINT PAVEMENT MARKINGS	50
T20.0908	8 INCH YELLOW WATERBORNE PAINT PAVEMENT MARKINGS	51
T20.1401	WATERBORNE PAINT PAVEMENT MARKING SYMBOL - ARROW (STRAIGHT, LEFT, RIGHT OR COMBINED) STANDARD 20.1.0	51
T20.1410	WATERBORNE PAINT PAVEMENT MARKING WORD ("ONLY", "STOP", "YIELD", "AHEAD", "XING", "SCHOOL", OR OTHER) STANDARD 20.1.0	52
T20.1416	WATERBORNE PAINT PAVEMENT MARKING SYMBOL SET - BIKE LANE (HELMETED BICYCLIST AND ARROW)	53
T20.1417	WATERBORNE PAINT PAVEMENT MARKING SYMBOL SET - SHARED LANE MARKING FOR BICYCLES	53
T20.2404	4 INCH WHITE FINAL EPOXY RESIN PAVEMENT MARKINGS	54
T20.2406	6 INCH WHITE FINAL EPOXY RESIN PAVEMENT MARKINGS	54
T20.2412	12 INCH WHITE FINAL EPOXY RESIN PAVEMENT MARKINGS	55
T20.2804	4 INCH YELLOW FINAL EPOXY RESIN PAVEMENT MARKINGS	56
T20.2806	6 INCH YELLOW FINAL EPOXY RESIN PAVEMENT MARKINGS	57
T20.2808	8 INCH YELLOW FINAL EPOXY RESIN PAVEMENT MARKINGS	57
T20.3401	FINAL EPOXY RESIN PAVEMENT MARKING SYMBOL - ARROW (STRAIGHT, LEFT, RIGHT OR COMBINED) STANDARD 20.1.0	57
T20.3410	FINAL EPOXY RESIN PAVEMENT MARKING WORD ("ONLY", "STOP", "YIELD", "AHEAD", "XING", "SCHOOL", OR OTHER) STANDARD 20.1.0	58

Table of Contents - Distribution of Quantities

Project Name - Old Tower Hill Rd (Rt 108 - Rt 1)

Estimate Name - Addendum 2

R.I. Contract No. - 2019-CH-083

FAP Nos: STPG-HSIP(066), STP-RESF(401)

ItemCode	Description	Page
T20.3416	FINAL EPOXY RESIN PAVEMENT MARKING SYMBOL SET - BIKE LANE (HELMETED BICYCLIST AND ARROW)	59
T20.3417	FINAL EPOXY RESIN PAVEMENT MARKING SYMBOL SET - SHARED LANE MARKING FOR BICYCLES	59
L01.0104	PLANTABLE SOIL 4 INCHES DEEP	60
L06.9907	RUBECKIA FULGIDA 'GOLDSTRUM'	60
L06.9908	ILEX VERTICILLATA 'RED STRIPE'	60
L06.9909	KALMIA POLIFOLIA 'BOG LAUREL'	60
L06.9910	RHODODENDRON VISCOSUM 'PINK MIST'	61
L06.9911	LIRIOPE SPICATA 'BIG BLUE'	61
L06.9912	CALAMAGROSTIS X ACUTIFLORA 'KARL FOERSTER'	61
L06.9913	ARCTOSTAPHYLOS UVA-URSI/KINNIKINNICK	61

Distribution of Quantities

Project Name - Old Tower Hill Rd (Rt 108 - Rt 1)

Estimate Name - Addendum 2

R.I. Contract No. - 2019-CH-083

FAP Nos: STPG-HSIP(066), STP-RESF(401)

Item No.	Item Code	Description	UM	Qty.	Pay Code	Seq. No.
012	202.0100	Cont.				
		LOAM AND SEED				
		FROM ITEM CODE NO. L01.0102		112.00	0006	01
		(900 SY @8")				
		SIDEWALKS				
		FROM ITEM CODE NO. 905.0110		486.00	0006	01
Item 202.0100 Total:				908.00		
013	202.0201	ROCK EXCAVATION MECHANICAL	CY			
		OLD TOWER HILL ROAD				
		PROJECT WIDE		50.00	0006	01
Item 202.0201 Total:				50.00		
014	204.0100	TRIMMING AND FINE GRADING	SY			
		BACK OF DRIVEWAYS				
		BACK OF DRIVEWAYS		360.00	0006	01
		BCD				
		88+13R- 88+78R		369.00	0006	01
		LOAM AND SEED AREAS				
		FROM ITEM CODE NO. L01.0102		1,010.00	0006	01
		SIDEWALK & DRIVEWAY				
		FROM ITEM CODE NO. 905.0110		2,187.00	0006	01
		FROM ITEM CODE NO. 905.0115		671.00	0006	01
Item 204.0100 Total:				4,597.00		
015	206.0301	COMPOST FILTER SOCK	LF			
		OLD TOWER HILL ROAD				
		OLD TOWER HILL ROAD		2,410.00	0006	01
		ROUTE 1		80.00	0006	01
Item 206.0301 Total:				2,490.00		

Distribution of Quantities

Project Name - Old Tower Hill Rd (Rt 108 - Rt 1)

Estimate Name - Addendum 2

R.I. Contract No. - 2019-CH-083

FAP Nos: STPG-HSIP(066), STP-RESF(401)

Item No.	Item Code	Description	UM	Qty.	Pay Code	Seq. No.
016	209.9901	Cont.				
		Item 209.9901 Total:		35.00		
017	212.2100	MAINTENANCE AND CLEANING OF EROSION AND POLLUTION CONTROLS	LS			
		OLD TOWER HILL RD				
		PROJECTWIDE		1.00	0006	01
		Item 212.2100 Total:		1.00		
018	302.0100	GRAVEL BORROW SUBBASE COURSE	CY			
		BACK OF DRIVEWAYS				
		BACK OF DRIVEWAYS		80.00	0006	01
		BCD				
		88+13R-88+78R		121.00	0006	01
		CURB LOCK				
		FROM ITEM CODE NO. 601.0300		144.00	0006	01
		DRIVEWAY				
		FROM ITEM CODE NO. 905.0115		149.00	0006	01
		SIDEWALKS				
		FROM ITEM CODE NO. 905.0110		486.00	0006	01
		Item 302.0100 Total:		980.00		
019	401.1000	CLASS 19.0 HMA	TON			
		KELLEY WAY				
		ROADWAY		6.00	0006	01
		OLD TOWER HILL ROAD				
		ROADWAY		8.00	0006	01
		Item 401.1000 Total:		14.00		
020	401.2100	MODIFIED CLASS 12.5 HMA	TON			
		BACK OF DRIVEWAYS				
		BACK OF DRIVEWAYS		63.00	0006	01
		BCD				

Distribution of Quantities

Project Name - Old Tower Hill Rd (Rt 108 - Rt 1)

Estimate Name - Addendum 2

R.I. Contract No. - 2019-CH-083

FAP Nos: STPG-HSIP(066), STP-RESF(401)

Item No.	Item Code	Description	UM	Qty.	Pay Code	Seq. No.
020	401.2100 Cont.	88+13R- 88+78R		64.00	0006	01
		ROADWAY				
		FROM ITEM CODE NO. 935.0400		1,637.00	0006	01
		(14,040 SY @ 2")				
Item 401.2100 Total:				1,764.00		
021	403.0300	ASPHALT EMULSION TACK COAT	SY			
		OLD TOWER HILL ROAD				
		88+13R- 88+78R		72.00	0006	01
		BACK OF DRIVEWAYS		360.00	0006	01
		FROM ITEM CODE NO. 935.0500		14,040.00	0006	01
Item 403.0300 Total:				14,472.00		
022	601.0300	CLASS A PORTLAND CEMENT CONCRETE	CY			
		OLD TOWER HILL ROAD				
		CURB LOCK		144.00	0006	01
Item 601.0300 Total:				144.00		
023	701.5312	12 INCH DUCTILE IRON WATER PIPE	LF			
		CLASS 52, PUSH-ON JOINT				
		OLD TOWER HILL ROAD				
		79+77 R			0006	01
		80+84 R			0006	01
		81+53 R			0006	01
		81+69 L		3.00	0006	01
		82+96 L		3.00	0006	01
		82+98 R			0006	01
		83+66 R			0006	01
		84+10 L		3.00	0006	01
		85+30 L		3.00	0006	01
		85+57 R			0006	01
		86+94 L		3.00	0006	01
		87+76 L		3.00	0006	01

Distribution of Quantities

Project Name - Old Tower Hill Rd (Rt 108 - Rt 1)

Estimate Name - Addendum 2

R.I. Contract No. - 2019-CH-083

FAP Nos: STPG-HSIP(066), STP-RESF(401)

Item No.	Item Code	Description	UM	Qty.	Pay Code	Seq. No.
023	701.5312 Cont.	87+79 R		5.00	0006	01
		88+97 L		3.00	0006	01
		89+29 R		5.00	0006	01
		89+88 R		5.00	0006	01
		90+20 L		3.00	0006	01
		90+31 R		5.00	0006	01
		90+82 R		5.00	0006	01
		AS DIRECTED BY THE ENGINEER		25.00	0006	01
Item 701.5312 Total:				74.00		
024	701.8151	CURB STOP BOX	EACH			
		OLD TOWER HILL ROAD				
		81+41L		1.00	0006	01
		82+84L		1.00	0006	01
		83+35L		1.00	0006	01
		84+47L		1.00	0006	01
		85+16L		1.00	0006	01
		85+99R		1.00	0006	01
		94+24L		1.00	0006	01
Item 701.8151 Total:				7.00		
025	702.0511	FRAME AND COVER STANDARD 6.1.0	EACH			
		OLD TOWER HILL ROAD				
		79+78R		1.00	0006	01
		80+85R		1.00	0006	01
		81+53R		1.00	0006	01
		81+98R		1.00	0006	01
		83+66R		1.00	0006	01
		85+59R		1.00	0006	01
		91+55R		1.00	0006	01
Item 702.0511 Total:				7.00		
026	702.0517	FRAME AND GRATE, STANDARD 6.3.2	EACH			

Distribution of Quantities

Project Name - Old Tower Hill Rd (Rt 108 - Rt 1)

Estimate Name - Addendum 2

R.I. Contract No. - 2019-CH-083

FAP Nos: STPG-HSIP(066), STP-RESF(401)

Item No.	Item Code	Description	UM	Qty.	Pay Code	Seq. No.
080	L01.0102 Cont.	OLD TOWER HILL ROAD				
		76+85L - 77+33L		19.00	0006	01
		78+18R - 80+45R		82.00	0006	01
		78+69L - 79+41L		24.00	0006	01
		79+68L - 80+34L		23.00	0006	01
		80+80R - 81+19R		17.00	0006	01
		81+06L - 81+40L		12.00	0006	01
		81+52R - 82+97R		61.00	0006	01
		81+61L - 81+86L		8.00	0006	01
		86+61R - 87+33R		24.00	0006	01
		86+84L - 88+29L		55.00	0006	01
		87+61R - 88+26R		25.00	0006	01
		88+64L - 91+84L		103.00	0006	01
		88+65R - 89+73R		36.00	0006	01
		92+57L - 95+39L		116.00	0006	01
		93+33R - 84+29R		32.00	0006	01
		95+44L - 95+66L		45.00	0006	01
		95+63L - 98+82L		117.00	0006	01
		95+76R - 96+73R		32.00	0006	01
		97+12R - 99+10R		69.00	0006	01
		ROUTE 1		111.00	0006	01
Item L01.0102 Total:				1,011.00		
S081	L01.9901	PINE BARK MULCH (3" DEPTH)	SY			
		OLD TOWER HILL ROAD				
		79+67R - 79+97R		12.00	0006	01
		80+35 L - 80+57 L		5.00	0006	01
		80+85 L - 81+40 L		12.00	0006	01
		81+61 L - 81+84 L		5.00	0006	01
		81+67L - 81+90L		9.00	0006	01
		83+45 R - 83+75 R		12.00	0006	01
		84+61 R - 84+89 R		44.00	0006	01
		85+26 R - 85+40 R		30.00	0006	01

Distribution of Quantities

Project Name - Old Tower Hill Rd (Rt 108 - Rt 1)

Estimate Name - Addendum 2

R.I. Contract No. - 2019-CH-083

FAP Nos: STPG-HSIP(066), STP-RESF(401)

Item No.	Item Code	Description	UM	Qty.	Pay Code	Seq. No.
S081	L01.9901 Cont.	85+39 R - 85+64 R		11.00	0006	01
		86+02 R - 86+22 R		9.00	0006	01
		88+64 L - 88+86 L		22.00	0006	01
		88+86 L - 90+17 L		29.00	0006	01
		92+15 R - 92+44 R		12.00	0006	01
		92+85 R - 95+41 R		57.00	0006	01
		AS DIRECTED BY THE ENGINEER		50.00	0006	01
Item L01.9901 Total:				319.00		

Distribution of Quantities

Project Name - Old Tower Hill Rd (Rt 108 - Rt 1)
 Estimate Name - Addendum 2
 R.I. Contract No. - 2019-CH-083
 FAP Nos: STPG-HSIP(066), STP-RESF(401)

Item No.	Item Code	Description	UM	Qty.	Pay Code	Seq. No.
S082	L01.9902	LANDSCAPE SOIL MIX	SF			
		OLD TOWER HILL ROAD				
		79+67R TO 79+97			0006	01
		81+67L TO 81+90			0006	01
		83+45R TO 83+75			0006	01
		84+61R TO 84+89			0006	01
		85+26R TO 85+40			0006	01
		85+39R TO 85+64			0006	01
		86+02R TO 86+22			0006	01
		92+15R TO 92+44			0006	01
Item L01.9902 Total:					**DELETED**	
083	L02.0102	RESIDENTIAL SEEDING (TYPE 2)	SY			
		OLD TOWER HILL ROAD				
		FROM ITEM CODE NO. L01.0102		1,011.00	0006	01
Item L02.0102 Total:				1,011.00		
084	L06.9901	ACER SACCARUM 'SUGAR MAPLE'	EACH			
		OLD TOWER HILL ROAD				
		PROJECT WIDE		8.00	0006	01
Item L06.9901 Total:				8.00		
085	L06.9902	CRATAEGUS VIRIDIS 'WINTER KING'	EACH			
		OLD TOWER HILL ROAD				
		PROJECT WIDE		1.00	0006	01
Item L06.9902 Total:				1.00		
086	L06.9903	ASTER NOVAE-ANGLIAE	EACH			
		OLD TOWER HILL ROAD				
		PROJECT WIDE			0006	01
		OLD TOWER HILL ROAD				
		PROJECT WIDE		360.00	0006	01
Item L06.9903 Total:				360.00		

Distribution of Quantities

Project Name - Old Tower Hill Rd (Rt 108 - Rt 1)

Estimate Name - Addendum 2

R.I. Contract No. - 2019-CH-083

FAP Nos: STPG-HSIP(066), STP-RESF(401)

Item No.	Item Code	Description	UM	Qty.	Pay Code	Seq. No.
087	L06.9904	CAREX PENNSYLVANICA 'PENNSYLVANIA SEDGE'	EACH			

Distribution of Quantities

Project Name - Old Tower Hill Rd (Rt 108 - Rt 1)
 Estimate Name - Addendum 2
 R.I. Contract No. - 2019-CH-083
 FAP Nos: STPG-HSIP(066), STP-RESF(401)

Item No.	Item Code	Description	UM	Qty.	Pay Code	Seq. No.
087	L06.9904 Cont.	OLD TOWER HILL ROAD				
		PROJECT WIDE			0006	01
		OLD TOWER HILL ROAD				
		PROJECT WIDE		198.00	0006	01
Item L06.9904 Total:				198.00		
088	L06.9905	CLETHRA ALNIFOLIA 'HUMMINGBIRD'	EACH			
		OLD TOWER HILL ROAD				
		PROJECT WIDE			0006	01
		OLD TOWER HILL ROAD				
		PROJECT WIDE		82.00	0006	01
Item L06.9905 Total:				82.00		
089	L06.9906	ECHNACEA PURPUREA 'RUBY STAR'	EACH			
		OLD TOWER HILL ROAD				
		PROJECT WIDE			0006	01
		OLD TOWER HILL ROAD				
		PROJECT WIDE		72.00	0006	01
Item L06.9906 Total:				72.00		
090	L11.0102	TREE PLANT PROTECTION DEVICE	EACH			
		STANDARD 51.1.0				
		OLD TOWER HILL ROAD				
		79+00 R		1.00	0006	01
		79+35 R		1.00	0006	01
		79+60 R		1.00	0006	01
		80+05 R		1.00	0006	01
		86+95 R		1.00	0006	01
		87+15 R		1.00	0006	01
		90+40 L		1.00	0006	01
		90+75 L		1.00	0006	01
		91+05 L		1.00	0006	01
		91+40 L		1.00	0006	01

Distribution of Quantities

Project Name - Old Tower Hill Rd (Rt 108 - Rt 1)

Estimate Name - Addendum 2

R.I. Contract No. - 2019-CH-083

FAP Nos: STPG-HSIP(066), STP-RESF(401)

Item No.	Item Code	Description	UM	Qty.	Pay Code	Seq. No.
090	L11.0102 Cont.	93+40 R		1.00	0006	01
		93+78 R		1.00	0006	01
		94+14 R		1.00	0006	01
		SUPPL		10.00	0006	01
Item L11.0102 Total:				23.00		

Distribution of Quantities

Project Name - Old Tower Hill Rd (Rt 108 - Rt 1)

Estimate Name - Addendum 2

R.I. Contract No. - 2019-CH-083

FAP Nos: STPG-HSIP(066), STP-RESF(401)

Item No.	Item Code	Description	UM	Qty.	Pay Code	Seq. No.
125	T20.3417 Cont.	OLD TOWER HILL ROAD				
		75+50		1.00	0021	02
		76+30		1.00	0021	02
		76+55		1.00	0021	02
		77+05		1.00	0021	02
		77+85		1.00	0021	02
		78+75		1.00	0021	02
Item T20.3417 Total:				6.00		
126	L01.0104	PLANTABLE SOIL 4 INCHES DEEP	SY			
		OLD TOWER HILL RD				
		79+67R - 79+97R		12.00	0006	01
		81+67L - 81+90L		9.00	0006	01
		83+45R - 83+75R		12.00	0006	01
		84+61R - 84+89R		44.00	0006	01
		85+26R - 85+40R		30.00	0006	01
		85+39R - 85+64R		12.00	0006	01
		86+02R - 86+22R		9.00	0006	01
		92+15R - 92+44R		12.00	0006	01
Item L01.0104 Total:				140.00		
127	L06.9907	RUBECKIA FULGIDA 'GOLDSTRUM'	EACH			
		OLD TOWER HILL ROAD				
		PROJECT WIDE		128.00	0006	01
Item L06.9907 Total:				128.00		
128	L06.9908	ILEX VERTICILLATA 'RED STRIPE'	EACH			
		OLD TOWER HILL ROAD				
		PROJECT WIDE		11.00	0006	01
Item L06.9908 Total:				11.00		
129	L06.9909	KALMIA POLIFOLIA 'BOG LAUREL'	EACH			
		OLD TOWER HILL ROAD				

Distribution of Quantities

Project Name - Old Tower Hill Rd (Rt 108 - Rt 1)

Estimate Name - Addendum 2

R.I. Contract No. - 2019-CH-083

FAP Nos: STPG-HSIP(066), STP-RESF(401)

Item No.	Item Code	Description	UM	Qty.	Pay Code	Seq. No.
129	L06.9909 Cont.	PROJECT WIDE		14.00	0006	01
Item L06.9909 Total:				14.00		
130	L06.9910	RHODODENDRON VISCOSUM 'PINK MIST'	EACH			
		OLD TOWER HILL ROAD				
		PROJECT WIDE		21.00	0006	01
Item L06.9910 Total:				21.00		
131	L06.9911	LIRIOPE SPICATA 'BIG BLUE'	EACH			
		OLD TOWER HILL ROAD				
		PROJECT WIDE		2,365.00	0006	01
Item L06.9911 Total:				2,365.00		
132	L06.9912	CALAMAGROSTIS X ACUTIFLORA 'KARL FOERSTER'	EACH			
		OLD TOWER HILL ROAD				
		PROJECT WIDE		71.00	0006	01
Item L06.9912 Total:				71.00		
133	L06.9913	ARCTOSTAPHYLOS	EACH			
		UVA-URSI/KINNIKINNICK				
		OLD TOWER HILL				
		PROJECT WIDE		43.00	0006	01
Item L06.9913 Total:				43.00		