

July 16, 2019

STATE OF RHODE ISLAND AND PROVIDENCE PLANTATION
DEPARTMENT OF ADMINISTRATION

DIVISION OF PURCHASES BID No. 7598868

RHODE ISLAND DEPARTMENT OF TRANSPORTATION

RHODE ISLAND CONTRACT No. 2019-CB-048

FEDERAL-AID PROJECT NO. FAP Nos: BRO-0606(001) & BRO-PRES(006)

Bridge Group 16A - FOS, GLO, PVD, SCI, SMI

CITIES/TOWNS OF FOSTER, GLOCESTER, PROVIDENCE, SCITUATE, SMITHFIELD

COUNTY OF PROVIDENCE

NOTICE TO PROSPECTIVE BIDDERS

ADDENDUM NO. 1 Prospective bidders and all concerned are hereby notified of the following changes in the Plans, Specifications, Proposal and Distribution of Quantities for this contract. These changes shall be incorporated in the Plans, Specifications, Proposal and Distribution of Quantities, and shall become an integral part of the Contract Documents.

A. Plan Sheets

1. Replace Volume I Plan Sheet 5 with Plan sheet 5 (R-1) attached to this Addendum #1. The Job Specific National Grid Gas Notes have been revised.
2. Replace Volume I Plan Sheet 10 with Plan Sheet 10 (R-1) attached to this Addendum #1. Gas gate callout and utility notes have been revised.
3. Replace Volume II Plan Sheets 17 and 18 with Sheets 17(R-1) and 18(R-1) attached to this Addendum #1. National Grid gas main information has been added to the plan sheet.

B. Job Specific Pages

1. Replace Job Specific Pages JS-i and JS-ii with Pages JS-i(R-1) and JS-ii(R-1) attached to this Addendum #1. The Table of Contents has been revised.
2. Replace Job Specific Page JS-7 with Page JS-7(R-1) attached to this Addendum #1. The Item Code for "Remove, Stockpile, Handle, Haul, and Dispose Contaminated Soil has been revised to 202.9952.
3. Replace Job Specific Page JS-9 with Page JS-9(R-1) attached to this Addendum #1. The Method and Measurement and Basis of Payment sections for Item Code 202.9952 have been revised.
4. Replace Job Specific Page JS-59 with Page JS-59(R-1) attached to this Addendum #1. The Price Adjustments have been updated.
5. Add Job Specific Page JS-73 attached to this Addendum #1. The "Pay Adjustments" specification has been added to the Job Specific pages.

C. Contract Specific

1. Replace the Table of Contents with the Table of Contents pages CS-i(R-1) and CS-ii(R-1) attached to this Addendum #1. The Table of Contents has been updated to include Appendix J.

2. Replace page CS-4 with CS-4(R-1) attached to this Addendum #1. National Grid Gas requirements have been added to Section 3.
3. Replace page CS-6 with CS-6(R-1) attached to this Addendum #1. Contacts for National Grid Gas Damage Prevention personnel have been added.
4. Replace page iii in Appendix C with page iii(R-1) attached to this Addendum #1. The SWPPP has been signed by the Owner.
5. Replace Appendix D with Appendix D(R-1) attached to this Addendum #1. The TMP has been signed and the General Restrictions Chart has been revised.
6. Add Appendix J "National Grid Gas Requirements" attached to this Addendum #1. National Grid has provided guidance for working near gas mains.

D. Bidder Questions and Answers

1. All questions and answers from <http://www.dot.ri.gov/contracting/bids/quesanswer.php?job=2019-CB-048> have been attached to this Addendum #1.

E. Distribution of Quantities

1. Replace the Table of Contents with the Table of Contents index pages 1(R-1) through 5(R-1) attached to this Addendum #1. The Table of Contents has been revised.
2. Replace page 5 with page 5(R-1) attached to this Addendum #1. Item 202.9951 has been deleted from the Contract.
3. Add page 51(R-1) attached to this Addendum #1. Items 202.9952 and 999.9901 have been added to the Contract.

F. Federal Wage Rates

1. Replace the Federal Wage Rates dated 6/21/2019 with the Federal Wage Rates dated 7/12/2019 attached to this Addendum #1.



RI Department of Transportation
Administrator, Division of Project Management

FED. ROAD DIV. NO.	STATE	FEDERAL AID PROJECT NO.	FISCAL YEAR	SHEET NO.	TOTAL SHEETS
	RI	BRO-0606(001) BRO-PRES(006)	2019	5	62

GENERAL NOTES:

- EXISTING CONDITIONS SURVEY WAS PREPARED BY AEROTECH CORP. PROVIDENCE, RHODE ISLAND, IN SEPTEMBER OF 2018, AND FIELD EDITED BY PARE CORPORATION IN OCTOBER 2018.
- FOR SURVEY WORK PERFORMED BY THE CONTRACTOR, ALL SURVEY FIELD BOOKS AND ELECTRONIC DATA SHALL BE SUBMITTED TO THE RIDOT SURVEY SECTION UPON COMPLETION OF THE CONSTRUCTION WORK. FIELD BOOKS SHALL INCLUDE A LISTING OF ALL RI HIGHWAY BOUNDS THAT WERE SET WITH STATIONS, OFFSETS, COORDINATES, AND DATE SET CERTIFIED BY THE CONTRACTOR'S PROFESSIONAL LAND SURVEYOR.
- ALL REQUIRED TREE TRIMMING WILL BE COMPLETED UNDER THE RIDOT STATEWIDE TRIMMING CONTRACT. THERE IS NO SEPARATE PAY ITEM FOR THIS WORK.
- ALL GRASSED AREAS DISTURBED BY THE CONTRACTOR'S OPERATIONS SHALL BE REESTABLISHED WITH LOAM AND TYPE 2 SEED OR PLANTABLE SOIL AND TYPE I SEED. IF AREAS ARE BEYOND WORK LIMIT LINES, THEN THE COST SHALL BE BORNE BY THE CONTRACTOR.
- THE CONTRACTOR SHALL BE RESPONSIBLE FOR PROTECTING EXISTING TREES AND THEIR ROOT SYSTEMS DURING CONSTRUCTION.
- LOCATIONS OF EXISTING UTILITIES ARE APPROXIMATE AND HAVE BEEN PLOTTED FROM THE BEST AVAILABLE INFORMATION. THE CONTRACTOR SHALL VERIFY LOCATIONS OF ALL EXISTING UTILITIES AND NOTIFY THE APPROPRIATE UTILITY AUTHORITIES INCLUDING "DIG SAFE" PRIOR TO STARTING WORK. ANY DAMAGE TO UTILITIES CAUSED BY THE CONTRACTOR'S OPERATIONS SHALL BE THE RESPONSIBILITY OF THE CONTRACTOR AND THE COST OF REPAIRS SHALL BE BORNE BY THE CONTRACTOR AT NO ADDITIONAL EXPENSE TO THE OWNER.
- ALL WORK WITHIN THE STATE RIGHT-OF-WAY AND PORTIONS OF WORK ON CITY/TOWN ROADWAYS SHALL CONFORM TO THE RHODE ISLAND STANDARD SPECIFICATIONS, DETAILS, AND ALL ADDENDA.
- THE CONTRACTOR SHALL BE AWARE OF THE PRESENCE OF OVERHEAD UTILITIES WITHIN THE WORK ZONE AND SHALL PLAN ALL CONSTRUCTION ACCORDINGLY. NO ADDITIONAL PAYMENT WILL BE MADE FOR EQUIPMENT AND METHODS REQUIRED TO ACCOMMODATE THE OVERHEAD UTILITIES.
- NO SEPARATE PAYMENT WILL BE MADE FOR TEMPORARY EARTH SUPPORT. SHOULD THE CONTRACTOR USE ANY TEMPORARY EARTH SUPPORT STRUCTURES, THE COST SHALL BE CONSIDERED INCIDENTAL TO THE CORRESPONDING ITEMS OF WORK.
- CONTRACTOR TO EXCAVATE TEST PITS IN AREAS OF POTENTIAL UTILITY CONFLICTS AND RELAY INFORMATION TO RESIDENT ENGINEER PRIOR TO COMMENCEMENT OF UTILITY WORK.
- THERE SHALL BE NO PARKING OR STORING OF CONSTRUCTION EQUIPMENT UNDER THE DRIPLINE OF ANY TREE.
- THE CONTRACTOR SHALL BE AWARE OF THE PRESENCE OF LOW-LEVEL CONTAMINATION OBSERVED AT BORINGS B-3 AND B-3. THIS CONTAMINATION HAS BEEN DETERMINED TO NOT BE A RIDEM JURISDICTIONAL RELEASE. THE CONTRACTOR SHALL TAKE APPROPRIATE PRECAUTIONS FOR WORKER PROTECTION AND SHALL LEGALLY DISPOSE OF THE MATERIAL.
- THE BASELINE ON ROUTE 6 SHALL NOT BE USED FOR CONSTRUCTION LAYOUT AND IS SHOWN FOR QUANTITY PURPOSES ONLY.

GUARDRAIL REPLACEMENT NOTES:

- NEW GUARDRAIL AND GUARDRAIL TERMINAL INSTALLATIONS SHALL BE MASH COMPLIANT.
- THE APPROXIMATE LOCATION AND LENGTH OF PARTIAL AND COMPLETE GUARDRAIL REMOVAL AND REPLACEMENT ARE SHOWN IN THE REFERENCE DRAWINGS. PRIOR TO DISMANTLING ANY SECTION OF THE GUARDRAIL, THE CONTRACTOR SHALL VERIFY THESE LOCATIONS AND LENGTHS WITH THE ENGINEER. ALL GUARDRAIL SECTIONS THAT ARE TO BE REMOVED SHALL BE REPLACED THE SAME DAY. IF SAME DAY REPLACEMENT IS NOT POSSIBLE, THE CONTRACTOR SHALL PROVIDE CONCRETE BARRIERS WITH FLARE OUTSIDE THE CLEAR ZONE OR CRASH CUSHION. PLACEMENT AND REMOVAL OF CONCRETE BARRIER SHALL BE CONSIDERED INCIDENTAL TO THE GUARDRAIL REPLACEMENT, THEREFORE THERE IS NO SEPARATE PAYMENT.
- THE CONTRACTOR SHALL NOT INSTALL GUARDRAIL POSTS WITHIN PAVED WATERWAYS, ON TOP OF DRAIN LINES, OR ON TOP OF BOX CULVERTS. WHERE NECESSARY, POST SPACING SHALL BE ADJUSTED TO AVOID CONFLICTS, PROVIDED MINIMUM DEFLECTION REQUIREMENTS ARE STILL MET. THE CONTRACTOR SHALL MAKE EVERY EFFORT TO INSTALL STEEL BEAM GUARDRAIL POSTS ON EITHER SIDE OF AN OBSTRUCTION THAT IS LESS THAN SIX (6) FEET WIDE USING THE NORMAL 6'-3" POST SPACING. THIS MAY REQUIRE THAT THE GUARDRAIL INSTALLATION IS STARTED AT THE OBSTRUCTION AND CONTINUED IN EITHER DIRECTION AWAY FROM THE OBSTRUCTION TO THE DESIRED LENGTH SHOWN ON THE PLANS AND SPECIFIED IN THE CONTRACT DOCUMENTS.
- THE CONTRACTOR SHALL NOTE THAT THE REQUIRED INSTALLATION OF REFLECTORIZED DELINEATORS ON ALL GUARDRAIL AND GUARDRAIL END TREATMENTS SHALL BE CONSIDERED INCIDENTAL TO THE COST OF THE GUARDRAIL ITEM. NO SEPARATE PAYMENT WILL BE MADE FOR THE REFLECTORIZED DELINEATORS. DELINEATION STICKERS ARE ALSO REQUIRED ON ALL APPROACH END SECTIONS, AND SHALL BE CONSIDERED INCIDENTAL TO THE COST OF THE END TREATMENT.
- WHERE EXISTING GUARDRAIL POSTS ARE REMOVED AND NO NEW GUARDRAIL IS INSTALLED, THE POST HOLES SHALL BE FILLED WITH COMMON BORROW. PLANTABLE SOIL AND SEED SHALL BE SPREAD ACROSS THE FILLED HOLES. HOLES SHALL BE FILLED WITH CONCRETE BIT PATCH ON IMPERVIOUS SURFACES. THE COST OF THIS ITEM SHALL BE INCIDENTAL TO ITEM CODE 201.0415 REMOVE AND DISPOSE GUARDRAIL AND POST ALL TYPES.
- THERE WILL BE NO DIRECT PAYMENT FOR ANY HARDWARE, UNLESS OTHERWISE NOTED, REQUIRED TO PROPERLY COMPLETE THE INSTALLATION OF GUARDRAIL IN ACCORDANCE WITH THE STANDARD SPECIFICATIONS, STANDARD DETAILS, OR SPECIAL DETAILS CONTAINED IN THE CONTRACT. HARDWARE SHALL INCLUDE ALL NUTS, BOLTS, AND WASHERS.

ERECION TILT NOTES:

- ANY/ALL ADJUSTMENTS TO VERIZON OWNED UNDERGROUND EQUIPMENT (MANHOLES, FRAME & COVERS, CONDUITS, ETC) MUST BE PERFORMED BY AN APPROVED VERIZON CONTRACTOR. ADDITIONALLY, ALL ADJUSTMENTS MUST BE INSPECTED BY VERIZON'S CONTRACT WORK INSPECTOR (CWI). PLEASE CONTACT DAN MELLO (CWI) @ (401)439-5571...48 HOURS IN ADVANCE BEFORE COMMENCING WORK.
- IF VERIZON'S UNDERGROUND (UG) STRUCTURES (CONDUITS, CABLES, MANHOLES, ETC...) ARE EXPOSED DURING CONSTRUCTION, THE GENERAL CONTRACTOR (GC) MUST PROVIDE PROTECTION FOR THE EXPOSED PLANT IN ACCORDANCE WITH VERIZON'S METHODS AND PROCEDURES AND WITH THE APPROVAL OF VERIZON'S CWI. ADDITIONALLY, AN APPROVED PARTITION MUST BE PLACED BETWEEN EXISTING VERIZON STRUCTURES AND NEW CONCRETE CONSTRUCTION WHERE CONTACT AND/OR ENCROACHMENT MAY ARISE.
- THE UNDERMINING OF VERIZON DUCTS (INCLUDING THOSE CONCRETE ENCASED) IS NOT PERMITTED WITHOUT INSPECTION/PERMISSION OF VERIZON'S CWI.
- A RADIAL CLEARANCE OF THREE FEET (3') MUST BE MAINTAINED BETWEEN VERIZON'S AERIAL EQUIPMENT (CABLES, TERMINALS, POLES, ETC) IN ACCORDANCE WITH THE NATIONAL ELECTRICAL CODE (NEC) AND THE OCCUPATIONAL SAFETY AND HEALTH ADMINISTRATION (OSHA) REQUIREMENTS. THIS INCLUDES TRAFFIC SIGNAL AND CONSTRUCTION EQUIPMENT.... EITHER TEMPORARY OR PERMANENT. PLEASE REFER TO R.I.D.O.T. DOCUMENT TAC-0049 FOR ADDITIONAL INFORMATION.

NATIONAL GRID GAS NOTES:

DESCRIPTION

THIS GUIDELINE SHALL CONTROL WORK AROUND EXISTING CORROSION CONTROL COMPONENTS. REPLACEMENT OF TEST STATIONS, ANODES AND TEST WIRE LEADS SHALL COMPLY WITH STANDARDS AND SPECIFICATIONS STIPULATED BY NATIONAL GRID. IF DESIGN PLANS CALL FOR WORK IN THE AREA OF CORROSION CONTROL COMPONENTS, CARE MUST BE TAKEN TO PREVENT DAMAGE TO SUCH COMPONENTS.

GENERAL NATIONAL GRID CONSIDERATIONS

THE CONTRACTOR SHALL PERFORM REPLACEMENT OF DAMAGED CORROSION CONTROL TEST BOXES, RESETTING OF DISTURBED TEST BOXES, AND ENSURE A MINIMUM OF 12" OF EXCESS WIRE ABOVE THE RIM OF THE TEST BOX AFTER SET TO FINISHED GRADE. WIRES SHALL NOT BE PULLED TAUGHT TO ACHIEVE THE 12" ABOVE THE BOX, AS THIS WILL CAUSE STRESS ON THE WIRE CONNECTION AT THE MAIN. WIRES NEEDING TO BE LENGTHENED, DAMAGED CORROSION CONTROL COMPONENTS I.E. WIRES, OR WIRE COATING, SHALL REQUIRE NOTIFICATION TO THE CORROSION CONTROL DEPARTMENT (525-5610 OR 474-5171) TO INITIATE INSPECTION/REPAIR OR REPLACEMENT OF THE DAMAGED COMPONENTS.

BACKFILLING EXPOSED CORROSION CONTROL WIRE COMPONENTS SHALL BEGIN IMMEDIATELY AFTER THE WORK IN THAT LOCATION IS COMPLETE. THE REGION WITHIN 6" ALONGSIDE AND ON TOP OF THE CONNECTOR WIRES SHALL BE BACKFILLED WITH PADDING SAND (FREE OF CINDERS, ASH, AND ROCK). TEST WIRE LEADS MUST BE KEPT WITH ENOUGH SLACK TO PREVENT STRESS ON THE POINTS WHERE THE WIRES CONNECT TO THE GAS MAIN. TRENCH SPOIL MATERIAL SHALL BE SUITABLE FOR BACKFILLING ABOVE THE PADDING MATERIAL AS LONG AS ROCKS WITH A DIAMETER LARGER THAN 3" ARE REMOVED. THE REMAINDER OF THE TRENCH SHALL BE BACKFILLED & COMPACTED IN ACCORDANCE WITH SECTION 205.05.5 OF THE RIDOT STANDARD SPECIFICATION FOR ROAD AND BRIDGE CONSTRUCTION.

ALL VALVE BOXES AND CORROSION (CP) TEST BOXES HAVE BEEN MARKED ON THE PLANS. THESE BOXES NEED TO BE ADJUSTED TO THE NEW ROAD SURFACE. NEW BOXES CAN BE OBTAINED AT THE NATIONAL GRID PROVIDENCE FACILITY AT 477 DEXTER STREET. CORROSION TEST BOXES CONTAIN WIRES. USE CAUTION WHEN ADJUSTING THESE BOXES AND CONTACT RON VINCENT AT 617-438-5192 IF THE WIRES ARE DAMAGED. ALL VALVE BOXES MUST BE ACCESSIBLE AT ALL TIMES TO BE OPERATED IN THE EVENT OF AN EMERGENCY.

SEE APPENDIX J "NATIONAL GRID GAS REQUIREMENTS" FOR FURTHER NOTES AND GUIDANCE FOR WORKING NEAR NATIONAL GRID GAS UTILITIES.

THE CONTRACTOR SHALL ASSUME SECTIONS OF PIPE TO BE REMOVED ARE CONTAMINATED AND SHALL BE DISPOSED OF ACCORDING TO THE GUIDELINES IN APPENDIX J. THE COST OF HANDLING AND TRANSPORTING THE REMOVED PIPE SHALL BE INCIDENTAL TO ITEM 201.0414 "REMOVE AND DISPOSE PIPE--ALL SIZES"

DRAINAGE NOTES:

- DRAINAGE STRUCTURES, INCLUDING BUT NOT LIMIT TO, DRAINAGE PIPES, MANHOLES, AND CATCH BASINS ADJACENT TO THE WORK AREA SHALL BE CLEANED OR FLUSHED. THE FINAL QUANTITY OF DRAINAGE STRUCTURES TO BE CLEANED WILL BE AS DIRECTED BY THE ENGINEER.
- CATCH BASIN INLET SEDIMENT CONTROL DEVICES, AS SHOWN ON DETAILS SHEET, SHALL BE UTILIZED WHEN ADJACENT WORK ACTIVITY EXPOSES ERODIBLE SOILS.
- VEGETATION CLEARING TO ACCESS OUTFALLS DURING CLEANING AND FLUSHING PIPE SHALL BE AS DIRECTED BY THE ENGINEER.

EROSION CONTROL NOTES:

- BEST MANAGEMENT PRACTICES FOR EROSION AND SEDIMENT CONTROLS MUST BE USED AND MAINTAINED IN EFFECTIVE OPERATIONAL CONDITION DURING THE ACTIVITY, AND ALL EXPOSED SOIL AND OTHER FILLS MUST BE PERMANENTLY STABILIZED AT THE EARLIEST POSSIBLE DATE. (SEE "RHODE ISLAND SOIL EROSION AND SEDIMENT CONTROL HANDBOOK" ("RIESC HANDBOOK") AND THE LATEST VERSION OF THE "RHODE ISLAND STORMWATER DESIGN AND INSTALLATION STANDARDS MANUAL ("RISDIS MANUAL") FOR DESIGN GUIDANCE AND ADDITIONAL REQUIREMENTS".)
- NO ACTIVITY SHALL RESULT IN SEDIMENT TRANSPORT TO WETLANDS AND/OR WATERWAYS.
- NO EQUIPMENT SHALL BE PLACED IN ANY WATERCOURSE OR WETLAND FOR THE PURPOSE OF THE REPAIR, UNLESS AUTHORIZED BY THE GOVERNING AUTHORITY. ANY MATERIAL REMOVED FROM THE STRUCTURE DURING THE REPAIR SHALL BE DISPOSED PROPERLY OFFSITE.
- EXCEPT AS PROVIDED FOR BY PAY ITEMS, ALL WORK REQUIRED TO COMPLY WITH THESE REQUIREMENTS SHALL BE CONSIDERED INCIDENTAL TO THE WORK.

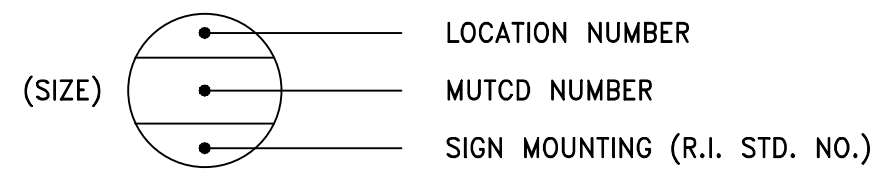
CONSTRUCTION ACTIVITY NOTES:

- ALL WETLAND FUNCTIONS AND VALUES MUST BE PROTECTED TO THE MAXIMUM EXTENT POSSIBLE SO AS TO PREVENT POLLUTANTS, SEDIMENT, DIRECT DISCHARGE OF STORMWATER RUNOFF, OR ANY MATERIAL FOREIGN TO A WETLAND OR HAZARDOUS TO LIFE, FROM ENTERING ANY WETLAND.
- STATE AND LOCAL PERMITTING AGENCIES MAY REQUIRE A WORK PLAN PRIOR TO THE ISSUANCE OF A PERMIT.

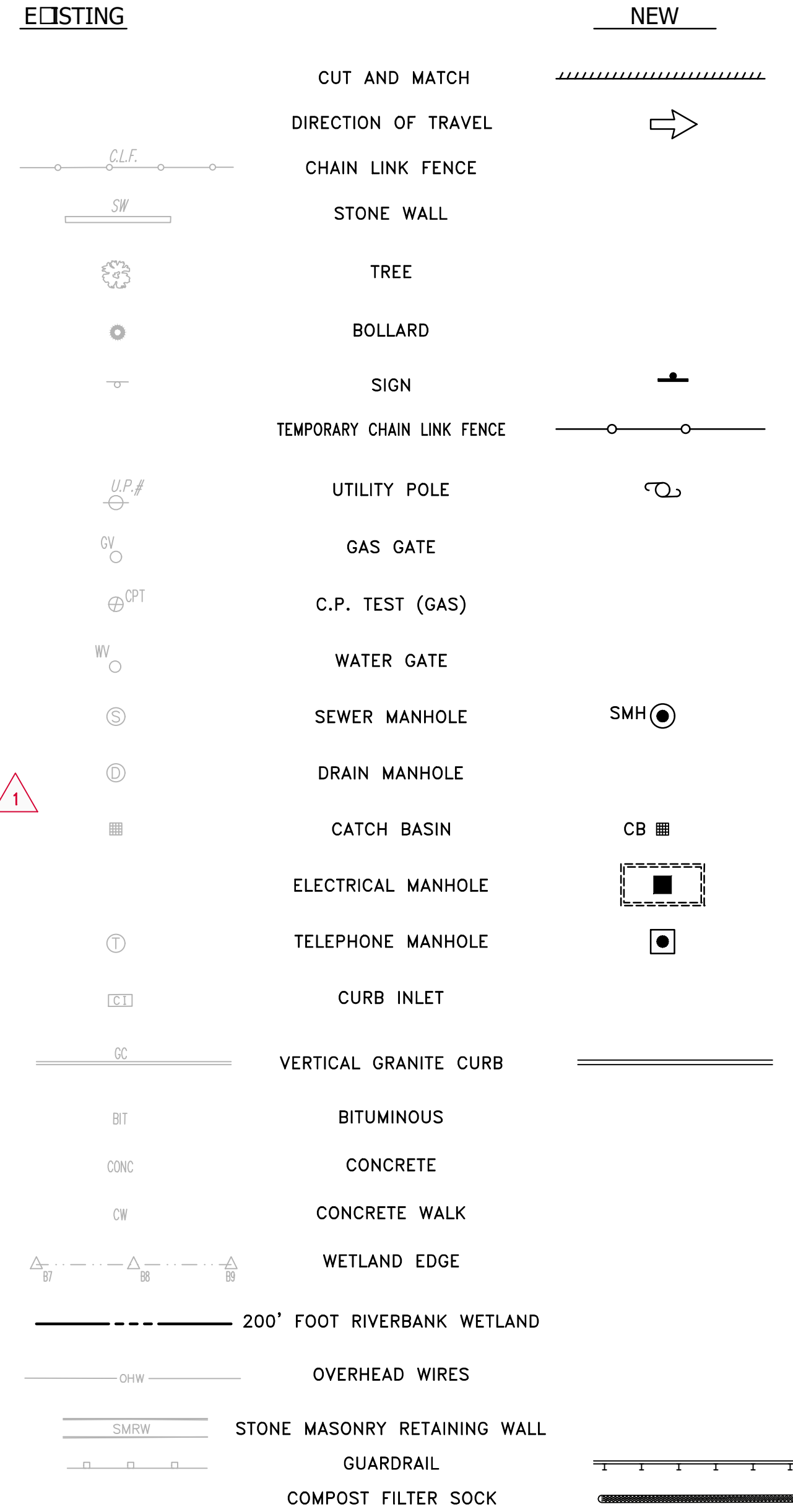
GENERAL NOTE REGARDING TEMPORARY CONSTRUCTION CONDITIONS :

- ALL TEMPORARY BARRIERS TO BE UTILIZED ON BRIDGES AND THEIR APPROACHES DURING CONSTRUCTION SHALL MEET THE THE FOLLOWING TEST LEVELS:
 BRIDGE 606 – TL-3
 BRIDGE 605 – TL-4
- CONTRACTOR SHALL EXERCISE CARE NOT TO DAMAGE THE EXISTING PAVEMENT DURING THE INSTALLATION AND RELOCATION OF TEMPORARY BARRELS.

TYPICAL SIGN DESIGNATION SYMBOL



PLAN SYMBOLS



REVISIONS/DETAILS

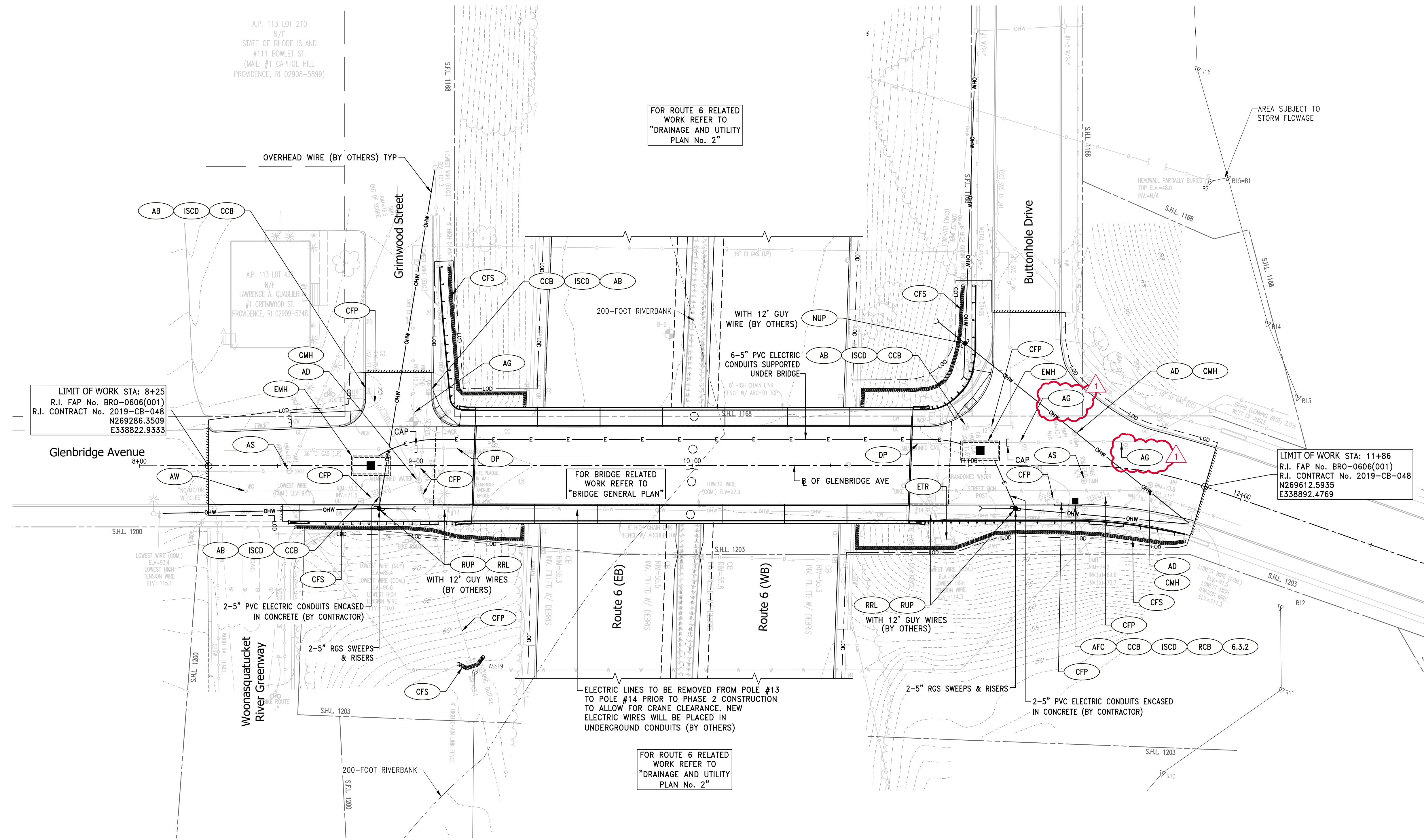
7.3.2M	6' GRANITE TRANSITION CURB, QUARRY SPLIT SPECIAL TRANSITION R.I. STANDARD 7.3.2 (MODIFIED)
7.3.9	GRANITE RAMP STONE
26.1.0	FLUORESCENT TRAFFIC CONES
29.1.0	CONSTRUCTION SIGNS
29.2.0	GUIDE SIGNS
34.1.0M	TYPICAL GUARDRAIL INSTALLATION (31" HEIGHT)
34.3.7	GUARDRAIL CONNECTION TO BARRIER – APPROACH END SECTION – STD. 34.3.7
43.1.0M	CEMENT CONCRETE SIDEWALK (MODIFIED) REINFORCED PER RIDOT STD 42.2.1 (THIS WORK SHALL BE PAID FOR UNDER ITEM NO 905.0110 PORTLAND CEMENT SIDEWALK)
47.1.1	TRANSVERSE PAVEMENT CUT AND MATCH

LEGEND

B	54" TL-5 BARRIER (SEE DETAILS)	R-1
BT	BARRIER TRANSITION (SEE DETAILS)	
CM	CUT AND MATCH (SEE DETAIL)	
CFS	COMPOST FILTER SOCK (SEE DETAILS)	
CW	CROSSWALK (SEE DETAILS)	
DCS	REMOVE AND DISPOSE CONCRETE SLAB	
EMH	NATIONAL GRID TWO-WAY ELECTRIC MANHOLE (SEE CS PAGES FOR DETAILS)	
ETEA	GUARDRAIL END TERMINAL – ENERGY ABSORBING	
FDS	FULL DEPTH SAWCUT OF BITUMINOUS PAVEMENT	
GRT	BRIDGE RAIL TO GUARDRAIL TRANSITION (SEE DETAILS)	
ISCD	INLET SEDIMENT CONTROL DEVICE (SEE DETAILS)	
MEPM	MATCH EXISTING PAVEMENT MARKING	
MMO	MICROMILL 1.5" OF EXISTING PAVEMENT INSTALL 1.5" OF FRICTION COURSE ASPHALT EMULSION TACK COAT BETWEEN LAYERS	
NGR	PROVIDE NESTED GUARD RAIL AT LOCATIONS WHERE GUARD RAIL POSTS HAVE BEEN ELIMINATED TO AVOID UNDERGROUND UTILITIES, AS DIRECTED BY THE ENGINEER. THIS WORK SHALL BE CONSIDERED INCIDENTAL TO ITEM 901.0193 "GUARDRAIL STEEL BEAM SINGLE FACE STD. 34.2.0."	
P-1	FULL DEPTH PAVEMENT CONSTRUCTION 2" MODIFIED CLASS 12.5 HMA SURFACE COURSE 5" CLASS 19.0 HMA (PLACED IN TWO 2.5" LIFTS) 12" GRAVEL BORROW SUBBASE ASPHALT EMULSION TACK COAT BETWEEN LAYERS	
P-2	FULL DEPTH PAVEMENT CONSTRUCTION 3" CLASS 12.5 HMA SURFACE COURSE 8" CEMENT CONCRETE 8" GRAVEL BORROW SUBBASE	
PMG	PLACEMENT OF MILLINGS BENEATH GUARDRAIL TO A MINIMUM DEPTH OF 5"	
PVI	PIPELINE VIDEO INSPECTION AND REPORTING	
RC	RECONSTRUCT CATCH BASIN OR MANHOLE CORBEL CONE	
RRM	ONE-WAY REFLECTORIZED RECESSED PAVEMENT MARKER (SEE DETAILS)	
RRL	REMOVE, STOCKPILE, AND RESET CITY STREET LIGHT	
RS	RUMBLE STRIP (SEE DETAILS)	
SSB	SAW AND SEAL BRIDGE JOINT	
6TW	6" TEMPORARY WATERBORNE PAVEMENT MARKING PAINT- WHITE	
6TY	6" TEMPORARY WATERBORNE PAVEMENT MARKING PAINT- YELLOW	
24TW	24" TEMPORARY WATERBORNE PAVEMENT MARKING PAINT- WHITE	
GD-1	GUARDRAIL END DELINEATOR--RED (SEE DETAILS)	



REVISIONS			<p align="center">RHODE ISLAND DEPARTMENT OF TRANSPORTATION</p> <p align="center">BRIDGE GROUP 16A FOS, GLO, PVD, SCI, SMI</p> <p align="center">PROVIDENCE COUNTY RHODE ISLAND</p> <p align="center">JOB SPECIFIC PLAN SYMBOLS, LEGEND & NOTES</p>
NO.	DATE	BY	
1	7/15/19	ETS	



A.P. 113 LOT 210
N/F
STATE OF RHODE ISLAND
#111 BOWLET ST.
(MAIL: #1 CAPITOL HILL
PROVIDENCE, RI 02908-5899)

FOR ROUTE 6 RELATED WORK REFER TO "DRAINAGE AND UTILITY PLAN No. 2"

AREA SUBJECT TO STORM FLOWAGE

LIMIT OF WORK STA: 8+25
R.I. FAP No. BRO-0606(001)
R.I. CONTRACT No. 2019-CB-048
N269286.3509
E338822.9333

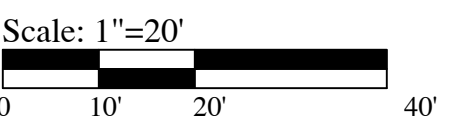
LIMIT OF WORK STA: 11+86
R.I. FAP No. BRO-0606(001)
R.I. CONTRACT No. 2019-CB-048
N269612.5935
E338892.4769

FOR BRIDGE RELATED WORK REFER TO "BRIDGE GENERAL PLAN"

ELECTRIC LINES TO BE REMOVED FROM POLE #13 TO POLE #14 PRIOR TO PHASE 2 CONSTRUCTION TO ALLOW FOR CRANE CLEARANCE. NEW ELECTRIC WIRES WILL BE PLACED IN UNDERGROUND CONDUITS (BY OTHERS)

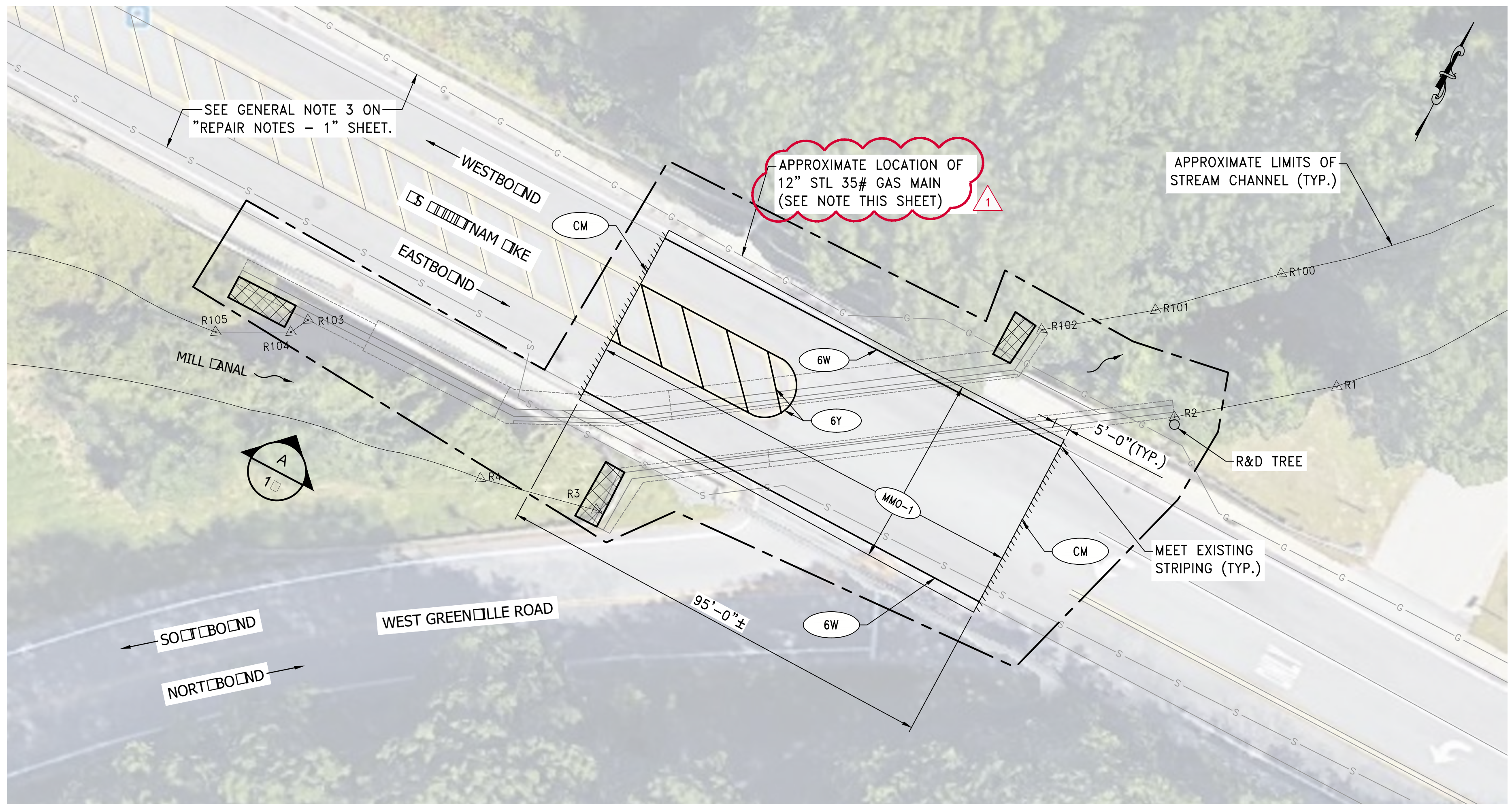
FOR ROUTE 6 RELATED WORK REFER TO "DRAINAGE AND UTILITY PLAN No. 2"

- NOTES:**
1. GUY WIRES AND ANCHORS MUST BE INSTALLED MAINTAINING MINIMUM PEDESTRIAN ACCESSIBILITY PER ADA STANDARDS.
 2. MINIMUM 1'-0" SEPARATION BETWEEN GAS MAIN EDGE AND MANHOLE. EXPOSURE OF MAIN REQUIRES DAMAGE PREVENTION ON-SITE. NO MORE THAN 10'-0" EXPOSURE ALLOWED OR RELAY REQUIRED.



REVISIONS		
NO.	DATE	BY
1	7/10/19	ETS

RHODE ISLAND DEPARTMENT OF TRANSPORTATION	
BRIDGE GROUP 16A FOS, GLO, PVD, SCI, SMI	
PROVIDENCE COUNTY	RHODE ISLAND
DRAINAGE AND UTILITY PLAN No. 1	
CHECKED BY _____	DATE _____ SCALE 1"=20'



BRIDGE GENERAL PLAN
SCALE: NTS

- LEGEND**
- CONCRETE PATCHING REPAIR
 - VEGETATION CLEARING (R&D)
 - LIMIT OF DISTURBANCE
- R-1

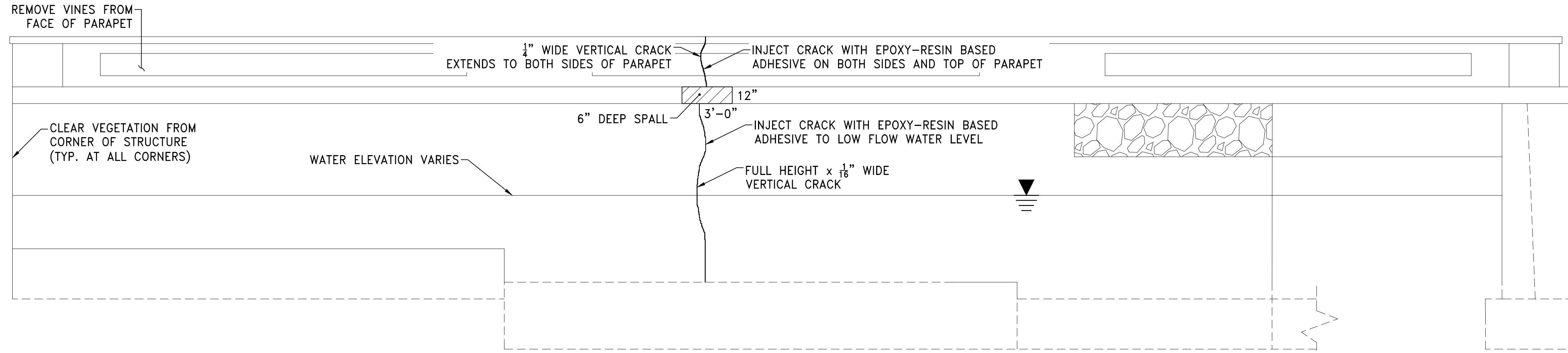
- DESCRIPTION OF PROPOSED WORK ON BRIDGE No. 015501:**
- REMOVE BITUMINOUS PAVEMENT BY MICRO-MILLING AND OVERLAY WITH A PAVEMENT MATERIAL ACCORDING TO SECTION 935 AND 401 OF THE RIDOT STANDARD SPECIFICATIONS.
 - STRUCTURAL CONCRETE CRACK REPAIR BY EPOXY-RESIN BASED ADHESIVE SHALL BE DONE IN ACCORDANCE WITH SECTION 836 OF THE RIDOT STANDARD SPECIFICATIONS. CRACK REPAIR SHALL BE DONE DURING LOW FLOW PERIODS AND SHALL NOT EXTEND BELOW THE WATER LINE. EPOXY-RESIN SHALL BE UNPIGMENTED AND CLEAR.
 - CONCRETE PATCHING MORTAR REPAIRS TO UNDERSIDE OF THE SLAB, ABUTMENT, WINGWALLS, AND/OR AS DIRECTED BY THE ENGINEER. PATCHING MORTAR REPAIRS SHALL BE IN ACCORDANCE WITH SECTION 837 (INTEGRALLY COLORED PATCHING MORTAR) OF THE RIDOT STANDARD SPECIFICATIONS.
 - FILL VOID IN NORTHEAST WINGWALL WITH GROUT OR CLASS A CONCRETE AND PLACE RIPRAP IN FRONT OF WINGWALL AS SHOWN ON THE PLANS. CONTROL OF WATER IS CONSIDERED INCIDENTAL TO, AND INCLUDED WITH THE PAYMENT FOR, THE RIPRAP ITEM AND WILL NOT BE MEASURED SEPARATELY FOR PAYMENT.
 - RE-STRIPE ROADWAY WITHIN LIMITS SHOWN. STRIPING LAYOUT SHALL MATCH EXISTING.
 - CLEAR VEGETATION WITHIN 5'-0"± OF ALL WINGWALLS, PARAPETS, AND/OR DIRECTED BY THE ENGINEER. REMOVE AND DISPOSE TREE BEHIND NORTHEAST WINGWALL AS SHOWN.
 - REMOVE VINES TO THE LIMITS SHOWN ON THE PLANS. VINE REMOVAL SHALL BE PAID UNDER ITEM CODE 201.9902, "VINE REMOVAL".

NATIONAL GRID GAS NOTES:

- THE EXISTING 12" STEEL 35 PSI GAS MAIN IS A CRITICAL MAIN, AND THE CONTRACTOR SHALL TAKE EXTREME CAUTION WHEN WORKING NEAR THE MAIN. THE CONTRACTOR SHALL PROVIDE PROTECTION FOR THE LINE DURING THE REPAIR WORK. THE CONTRACTOR SHALL NOTIFY NATIONAL GRID DAMAGE PREVENTION STAFF TO CONFIRM PROTECTION IS IN PLACE AND SAFE PRIOR TO THE START OF CONSTRUCTION AT THE BRIDGE.
- NATIONAL GRID GAS DAMAGE PREVENTION CONTACTS:

MARK HUCK
508-562-1240
MARK.HUCK@NATIONALGRID.COM

COREY ALLISON
617-212-6317
COREY.ALLISON@NATIONALGRID.COM
- THE WORK ASSOCIATED WITH PROTECTING THE GAS MAIN SHALL BE CONSIDERED INCIDENTAL TO THE PAY ITEMS FOR REPAIRS TO LONGHOUSE BRIDGE NO. 155.



SOUTH EST ING ALL ELEVATION A
SCALE: NTS

REVISIONS		
NO.	DATE	BY
1	7/10/19	ETS

RHODE ISLAND
DEPARTMENT OF TRANSPORTATION

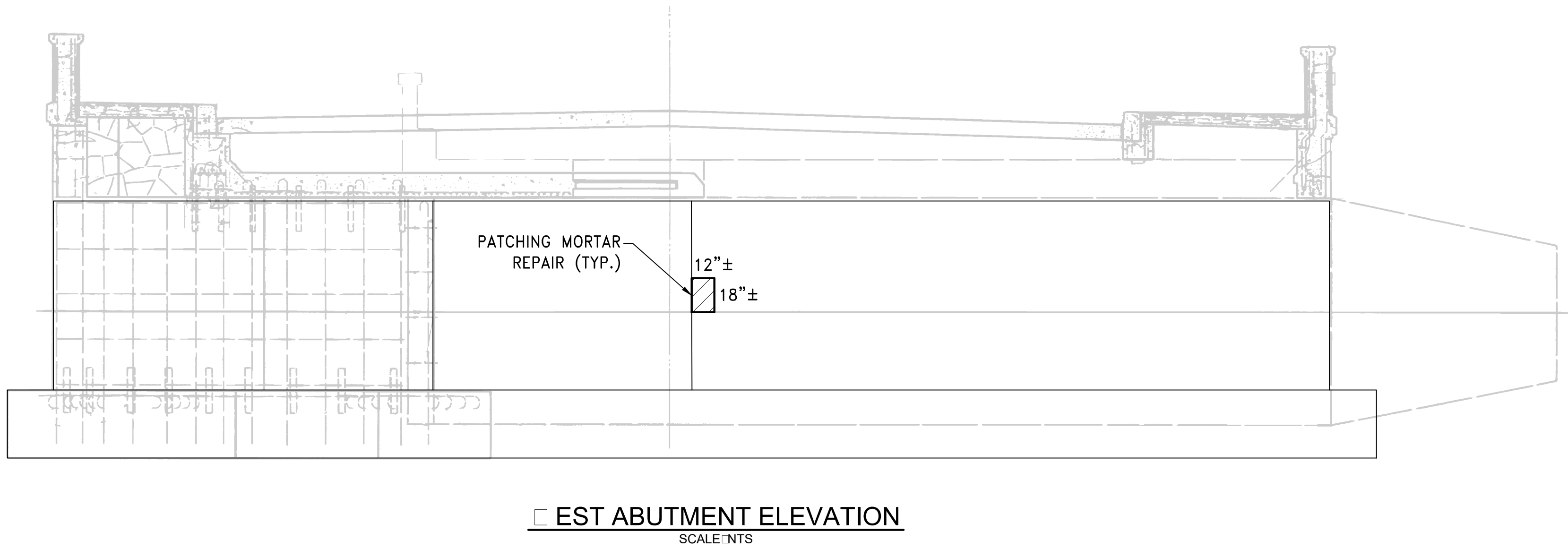
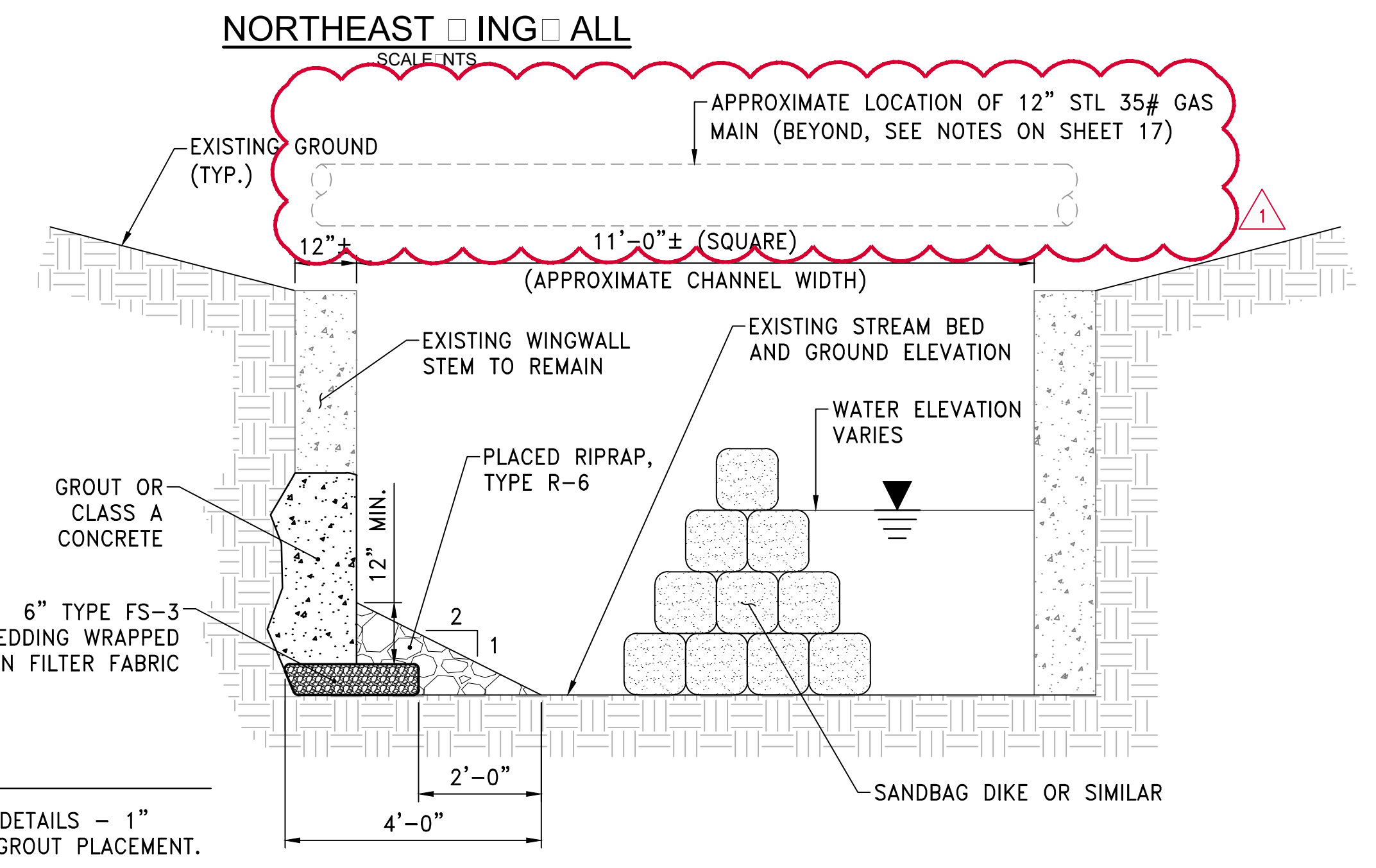
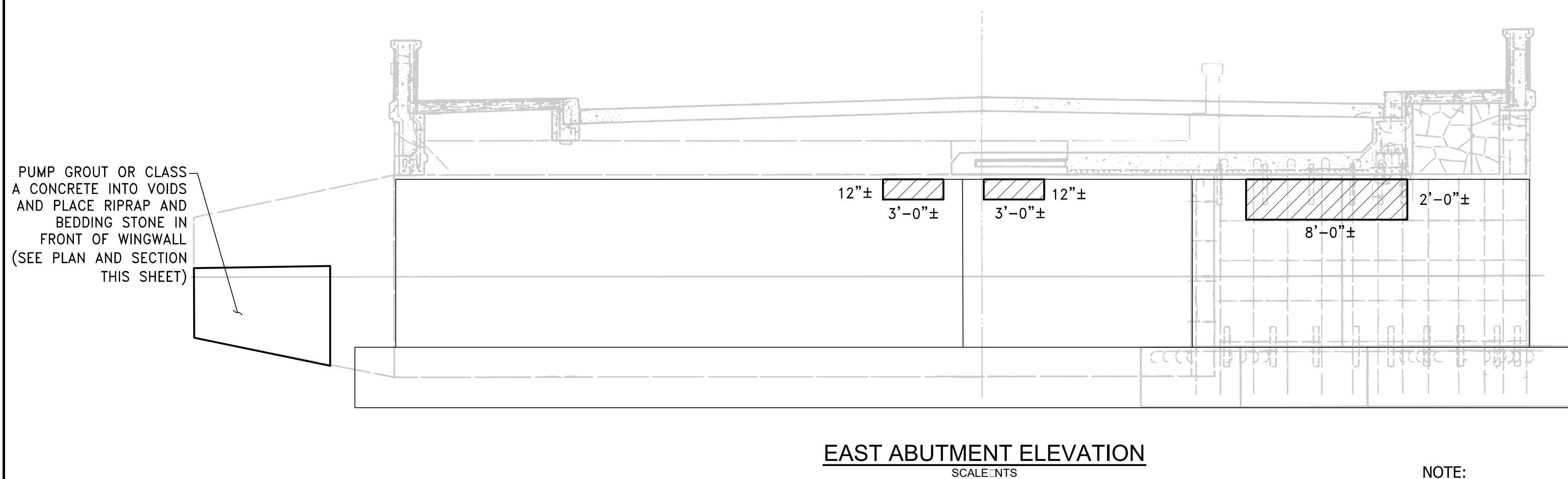
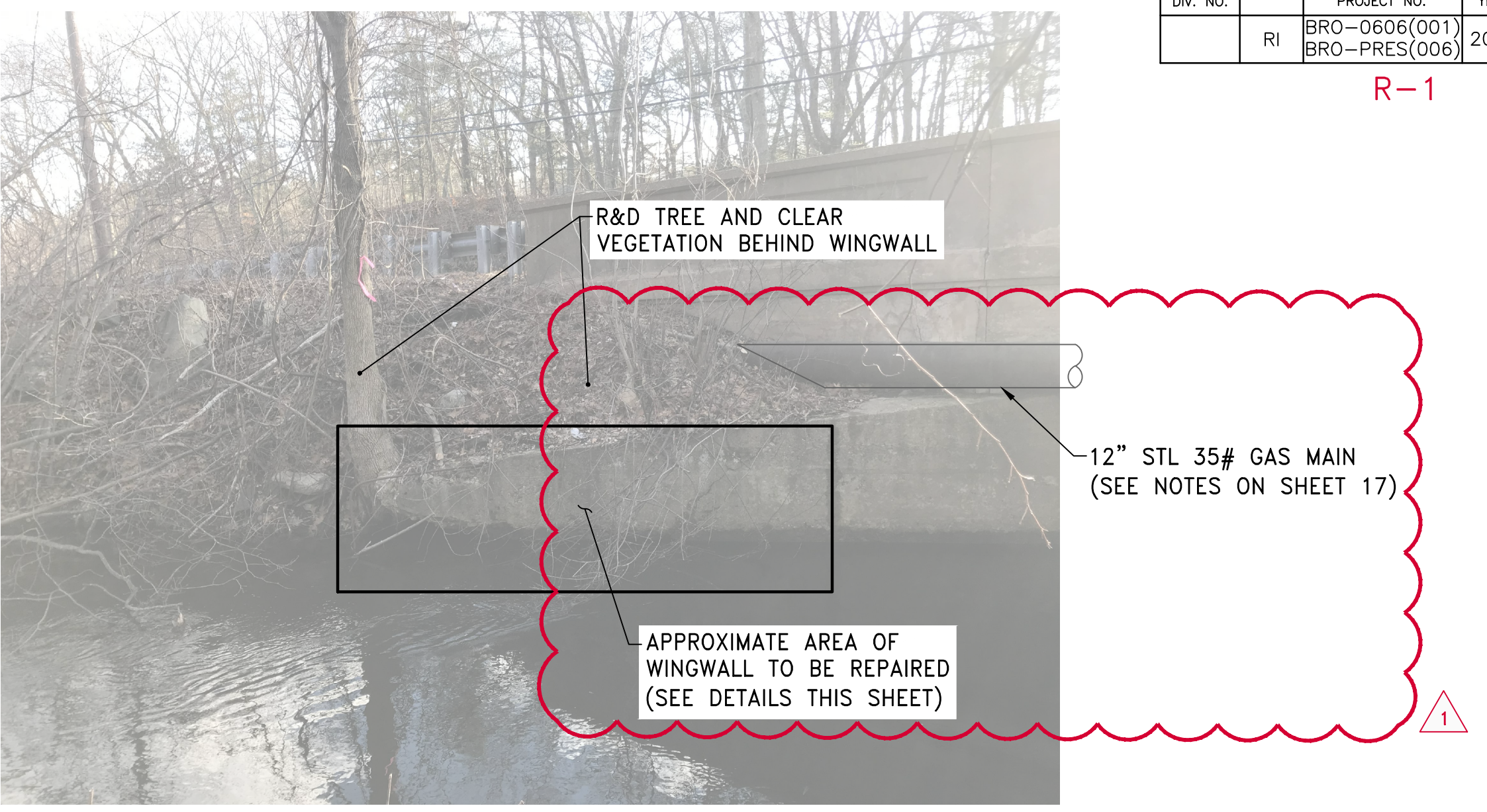
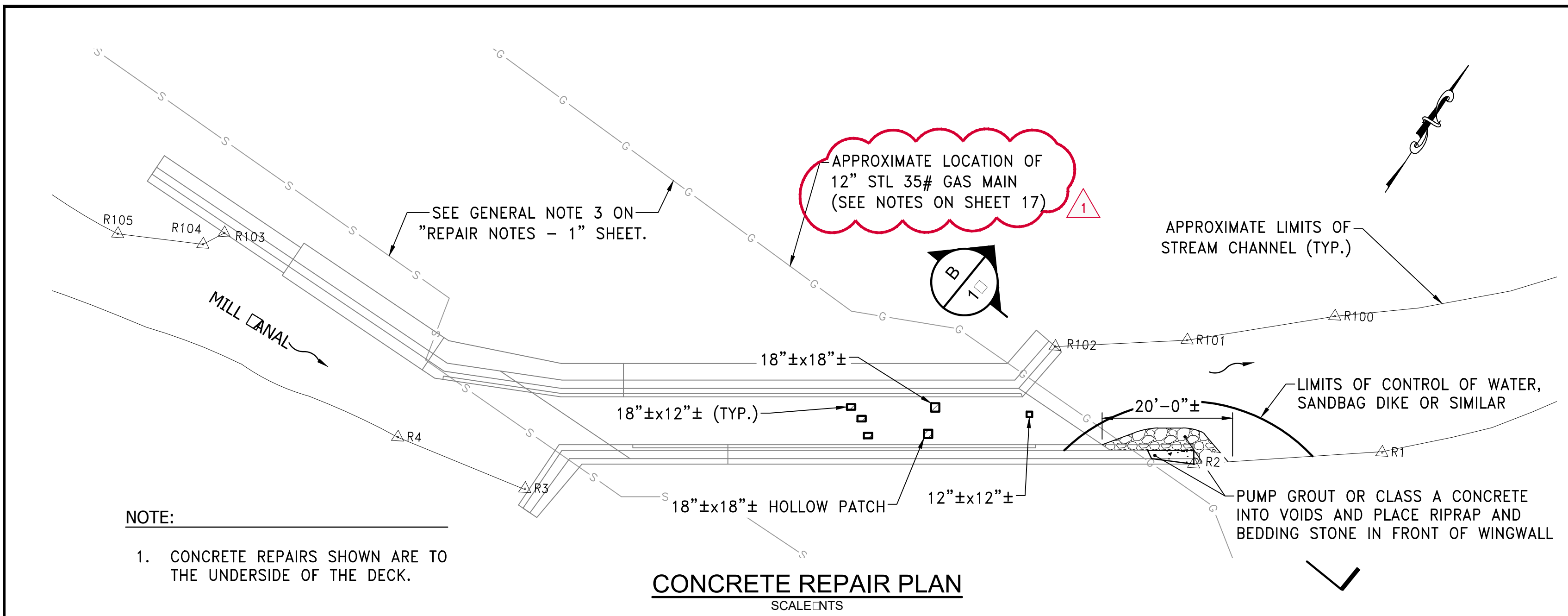
BRIDGE GROUP 16A
FOS, GLO, PVD, SCI, SMI

PROVIDENCE COUNTY RHODE ISLAND

LONGHOUSE BRIDGE NO. 1
REPAIR PLAN NO. 1



CHECKED BY _____ DATE _____ SCALE _____ NTS _____



- NOTES:
- THE EXISTING PLANS ARE TAKEN FROM THE 1936 PLAN SET, "LONGHOUSE BRIDGE, SMITHFIELD, RI, WIDENING PLAN, "
 - WATER LEVEL WAS OBSERVED BY PARE ON JANUARY 25, 2019 AND DOES NOT NECESSARILY REFLECT THE ORDINARY HIGH WATER LEVEL.

LEGEND

CONCRETE PATCHING REPAIR

REVISIONS			RHODE ISLAND DEPARTMENT OF TRANSPORTATION
NO.	DATE	BY	
1	7/10/19	ETS	BRIDGE GROUP 16A FOS, GLO, PVD, SCI, SMI

PROVIDENCE COUNTY RHODE ISLAND

LONGHOUSE BRIDGE NO. 1
REPAIR PLAN NO.

CHECKED BY _____ DATE _____ SCALE _____ AS NOTED



**SPECIFICATIONS - JOB SPECIFIC
TABLE OF CONTENTS**

<u>CODE</u>	<u>TITLE</u>	<u>PAGE</u>
105.02	Plan and Shop Drawings	JS – 1
108.03	Prosecution and Progress – Project Schedule Program & Software	JS – 3
108.1000	Prosecution and Progress – Failure to Complete on Time	JS – 4
201.9901	Clearing	JS – 5
201.9902	Vine Removal	JS – 6
201.9952	Sample and Test Contaminated Soil	JS – 7
202.9952	Remove, Stockpile, Handle, Haul, and Dispose Contaminated Soil	
203.9902	MSE Backfill	JS – 10
212.1000	Failure to Maintain Erosion and Pollution Controls	JS – 15
402.9901	Friction Course	JS – 16
702.9901	National Grid Two Way Manhole	JS – 20
708.9901	Pipeline Video Inspection and Reporting	JS – 21
800.9901	Glenbridge Avenue Bridge No. 606	JS – 23
802.9901	Temporary Pier Shoring	JS – 24
803.9901	Concrete Haunch Removal	JS – 25
805.9901	Temporary Support of Excavation	JS – 26
807.9901	Reset Stone Masonry Wall	JS – 28
807.9902	Pointing and Grouting Masonry on Historic Bridges	
808.9901	Grout for Scour Repairs	JS – 31
810.9901	Mechanical Reinforcing Bar Splicer	JS – 34
820.9902	High-Pressure Water Cleaning of Historic Bridge Structure	JS – 35
820.9903	High-Pressure Water Cleaning of Concrete and Masonry Surfaces	
802.9904	High Pressure Water Cleaning – Bridge 605	JS – 37
824.9901	Reset Intermediate Diaphragm	JS – 40
828.9901	Seismic Isolation Bearings	JS – 41

<u>CODE</u>	<u>TITLE</u>	<u>PAGE</u>
905.1000	Sidewalks	JS – 48
907.1000	Dust Control	JS – 49
909.9901	Precast Median Barrier- Transition Unit	JS – 50
909.9902	Precast Median Vertical Barrier- 54 Inch Height	JS – 51
910.9901	Rumble Strips	JS – 52
920.9901	Stone Riprap All Types	JS – 53
920.9902	Bedding for Riprap FS-3	
921.9901	Remove and Reset Slope Paving	JS – 54
923.9901	Longitudinal Pedestrian Channelizing Device	JS – 55
926.9901	Unanchored Barrier for Temporary Traffic Control (MASH TL-3)	JS – 56
926.9902	Anchored Barrier for Temporary Traffic Control (MASH TL-3)	
926.9903	Unanchored Barrier for Temporary Traffic Control (MASH TL-4)	
937.1000	Maintenance and Movement of Traffic Protection Devices	JS – 58
938.1000	Price Adjustments	JS – 59
943.0200	Trainee Man-Hours	JS – 61
L.02.1000	Seeding	JS – 65
T06.9901	2 – 5” PVC Electric Conduits (Encased in Concrete)	JS – 66
T06.9902	6 - 5” PVC Electric Conduits (Encased in Concrete)	
T06.9903	6 – 5” PVC Electrical Conduits (Supported on Structure)	JS – 67
T07.9901	Remove, Stockpile, and Reset Street Lights on Utility Pole	JS – 68
T12.9901	Portable Traffic Control Signal System	JS – 69
T18.9901	Guardrail End Delineator- Red	JS – 70
T18.9902	Guardrail End Delineator- Green	
T20.9901	Reflectorized Recessed Pavement Marker (Slotted in Pavement) White	JS – 71
999.9901	Pay Adjustments	JS – 73

**CODE 201.9952
SAMPLE AND TEST CONTAMINATED SOIL**

**CODE 202.9952
REMOVE, STOCKPILE, HANDLE, HAUL, AND DISPOSE CONTAMINATED SOIL**

DESCRIPTION: This work includes, but is not limited to, the excavation, stockpiling, testing, handling, hauling, and disposal, including transportation and landfill tipping facility fees, of contaminated soil within the project area.

The Contractor shall provide the services of a Qualified Environmental Professional (QEP) as defined by the EPA All Appropriate Inquiry Rule (EPA 560-F-05-240), to collect and coordinate the testing of waste characterization samples and compliance samples, as described under Construction Methods.

All work shall be in accordance with the Rhode Island Rhode Island Standard Specifications for Road and Bridge Construction, amended March 2018, with all revisions, and this Special Provision.

MATERIALS: (N/A)

CONSTRUCTION METHODS:

A. Site Conditions

1. At this time, available soil data indicates that soil at the site is generally consistent with background levels and suitable for general reuse; however, the soil sample from boring B-3 had petroleum hydrocarbons (reported as TPH) approaching the RI Direct Exposure Criteria for residential soils. TPH of 455 mg/kg was reported in the surface soil sample interval between 1 and 5 feet below ground surface. Low level PAHs were detected in boring B-2 completed within the median strip of Route 6, beneath the bridge. One PAH, benzo(a)pyrene was reported at 0.402 mg/kg, which is marginally above the residential standard of 0.400 mg/kg but below the industrial commercial standard of 0.800 mg/Kg. The provisions of the Standard Specifications shall apply unless site conditions change. Such conditions that would require stockpiling, sampling, and analysis include but are not limited to visual indications of chemical staining, building materials, olfactory observations that indicate the presence of petroleum, an unnatural change in color of the soil, an oily sheen, or obvious contaminants observed within the excavation. If the soil conditions indicate contamination, the soil shall be sampled and analyzed for waste characterization at the direction of the Engineer.
2. Excess soil that has not been reused as backfilled shall be stockpiled and sampled for waste characterization analysis at a rate of no less than (a)_1 sample per one thousand (1,000) tons of material prior to disposal.

pavement, temporary sidewalk, and reset curb items is covered under the respective items in the contract for

METHOD OF MEASUREMENT: “Sampling and Testing Contaminated Soil” will be measured by each sample and test of contaminated soil in accordance with the plans and/or as directed by the Engineer.

“Remove, Stockpile, Handle, Haul, and Dispose Contaminated Soil” shall be measured for payment by the actual cost, as approved by the Engineer for the cost of performing the work as directed by the Engineer.

BASIS OF PAYMENT: “Sampling and Testing Contaminated Soil” will be paid for at the contract unit price per each as listed in the Proposal. The price so stated shall constitute full and complete compensation for all labor, tools, materials, equipment, transportation, disposal, and other incidentals required to finish the work, complete in place and accepted by the Engineer.

“Remove, Stockpile, Handle, Haul, and Dispose Contaminated Soil” will be paid for at the actual dollar amount. The estimated dollar figure for this item of work established by Department at 100,000 units at \$1.00 each and is inserted in the proposal as an authorized amount from which the payments shall be drawn.

Remove **SECTION 938, PRICE ADJUSTMENTS**, pages 9-82 to 9-83 of the RI Standard Specifications for Rhode and Bridge Construction and page AC-136 of the Compilation of Approved Specifications, September 2018 in their entirety and replace them with the following.

JOB SPECIFIC

**CODE 938.1000
PRICE ADJUSTMENTS**

DESCRIPTION:

- a. **Liquid Asphalt Cement.** The Base Price of Liquid Asphalt Cement as required to implement **Subsection 938.03.1** of the Standard Specifications is \$547.50 per ton as of 07/1/2019.

“In the case of modified asphalt binder, this price adjustment provision shall only apply to the neat liquid asphalt component. This provision shall not apply to the modifier component, manufacture, storage, transportation of other associated costs.

- b. **Diesel Fuel.** The Base Price of Diesel Fuel as required to implement **Subsection 938.03.2** of the Standard Specifications is \$2.0003 per gallon as of 07/1/2019.
- c. **Steel.** The Base Price of Steel as required to implement **Subsection 938.03.3** of the Standard Specifications is as shown on the following sheet.

JOB SPECIFIC

**CODE 999.9901
PAY ADJUSTMENTS**

9981 DESCRIPTION. This specification provides a mechanism for the payment of pay adjustments for liquid asphalt cement, diesel fuel, and steel as described in the job specific specification 938.1000.

9982 MATERIALS. Not applicable.

9983 CONSTRUCTION METHODS. Not applicable.

9984 METHOD OF MEASUREMENT. Pay adjustments will be measured using the “Method of Measurement” sections of the applicable items described in the job specific specification 938.1000.

9985 BASIS OF PAYMENT. Pay adjustments will be paid per each unit using the requirement in the “Basis of Payment” sections of the applicable items described in the job specific specification 938.1000.

GENERAL PROVISIONS – CONTRACT SPECIFIC

<u>PARAGRAPH</u>	<u>TITLE</u>	<u>PAGE</u>
1	Brief Scope of Work	CS – 1
2	List of Contract Drawings	CS – 2
3	Utility and Municipal Notification and Coordination	CS – 3
4	Specialty Items	CS – 7
5	Transportation Management Plan	CS – 8
6	Sequence of Construction	CS – 8
7	Special Requirements for Pavement Markings	CS – 9
8	Utility Structures and Waterways within Roadway	CS – 10
9	Contractor’s Responsibility for Damaged Storm Drains	CS – 10
10	Special Requirement for Traffic Protection	CS – 10
11	Storage of Construction Material and/or Equipment	CS – 11
12	Traffic Fines in Work Zones	CS - 11
13	Sidewalk Sawcut Notes	CS – 11
14	Blasting Restrictions	CS – 12
15	Survey Layout Notes	CS – 12
16	Right-of-Way and Damage to Property	CS – 12
17	Coordination with Other Projects	CS – 12
18	Incident Management	CS – 13
19	Guardrail Replacement	CS – 13
20	Police Compensation	CS – 13
21	Environmental Permits	CS – 13
22	Phase II Environmental Site Assessment Testing	CS – 14
23	Stormwater Pollution Prevention Plan	CS – 14
24	Shop Drawing and Submittals	CS – 14
25	Available Documents	CS - 16

APPENDIX

Appendix A	Locus Maps
Appendix B	Environmental Permits
Appendix C	Small Site Stormwater Pollution Prevention Plan
Appendix D	Transportation Management Plan
Appendix E	Temporary Use and Access Agreement
Appendix F	National Park Service Preservation Brief #47
Appendix G	Phase II Environmental Site Assessment Sampling Results
Appendix H	National Grid Drawings
Appendix I	National Grid Municipal Street Lighting Specifications
Appendix J	National Grid Gas Requirements

Crown Castle anticipates a three-day duration to complete the relocation of their telecommunication lines.

The existing lighting on the utility poles being relocated at Glenbridge Avenue Bridge No. 606 is owned by the City of Providence. The lighting elements shall be removed, stockpiled, and replaced by a National Grid approved electrical contractor according to the National Grid specifications included in Appendix I.

The Contractor shall coordinate all lane closures and detours with the Engineer such that the Engineer can coordinate with the Municipality at least three days in advance for each lane closure and detour. The following municipal agencies and utility companies can be contacted for information regarding utilities, verification, or monitoring:

The Contractor shall coordinate with the Chepachet Fire District a minimum of two weeks prior to entering the site for access to Bridge No. 010001. See Section 16” Right-of-Way and Damage to Property” for additional information.

Prior to the start of repair operations at Longhouse Bridge No. 015501, the Contractor shall notify National Grid Gas Damage Prevention personnel to confirm protection of the existing 12” gas main is in place and safe.

Foster:

Town of Foster, DPW
Robert Lohr
Public Works Director
Foster Town Hall
181 Howard Hill Road
Foster, RI 02825
Telephone: (401) 392-9204

Town of Foster, Police
David Breit
Chief of Police
182 Howard Hill Road
Foster, RI 02825
Telephone: (401) 397-3317

Glocester:

Town of Glocester, DPW
Gary Treml
Director of Public Works
Glocester Public Works Department
91 Chestnut Hill Road
Chepachet, RI 02814
Telephone: (401) 568-5540

Town of Glocester, Police
Joseph DelPrete
Chief of Police
Glocester Police Department
162 Chopmist Hill Road
Chepachet, RI 02814
Telephone: (401) 568-2533

Chepachet Fire District
Robert Dauphinais
Fire Chief
1170 Putnam Pike
PO Box 755
Chepachet, RI 02814
Telephone: (401) 568-6100

**Addendum No. 1
R-1**

Smithfield:

Smithfield Department of Public Works
Gene Allen
Public Works Director
Smithfield Department of Public Works
64 Farnum Pike
Smithfield, RI 02971
Telephone: (401) 233-1034

Smithfield Police Department
Richard P. St. Sauveur, Jr.
Chief of Police
Smithfield Police Department
215 Pleasant View Avenue
Smithfield, RI 02917
Telephone: (401) 231-2500

Contract Wide

Crown Castle Fiber
Mark Bonanno
Senior Manager Fiber Construction
New England Region
Crown Castle Fiber (formerly Lightower &
Fibertech)
80 Central Street
Boxborough, MA 01719
Telephone: Office- (508) 616-7818
Mobile- (617) 828-1415

National Grid Electric and Gas
Thomas Capobianco
Lead Program Manager for RIDOT
National Grid Electric and Gas
280 Melrose Street
Providence, RI 02907
Telephone: (401) 784-7248

AT&T and Teleport Communications
Hayleigh Walker-Kurland
Project Coordinator
Sienna Engineering Group, Inc.
50 Mall Road, Suite 203
Burlington, MA 01803
Telephone: (781) 221-8400 x7023

CenturyLink
Mike Wiemer
Senior Outside Plant Engineer
Global Field Services- New England Division
CenturyLink (formerly known as Level 3)
300 Bent Street
Cambridge, MA 02141
Telephone: Mobile- (617) 480-4861

National Grid Gas Damage Prevention
Mark Huck
Telephone: (508) 562-1240
mark.huck@nationalgrid.com

Corey Allison
Telephone: (617) 212-6317
corey.allison@nationalgrid.com

OWNER CERTIFICATION

I certify under penalty of law that this document and all attachments were prepared under the direction or supervision in accordance with a system designed to assure that qualified personnel properly gather and evaluate the information submitted. Based on my inquiry of the person or persons who manage the system, or those persons directly responsible for gathering the information, the information submitted is, to the best of my knowledge and belief, true, accurate, and complete.

David W. Fish

5-17-19

Owner Signature:

Date Click or tap to enter a date.

Owner Name: David Fish, P.E.

Owner Title: Administrator of Project Management

Company Name: Rhode Island Department of Transportation



Project Name: **Bridge Group 16A Rehabilitation**

RI Design Contract No(s):

RI Construction Contract No(s): **2019-CB-048**

Submission: **ADV**

Date: **6/17/2019**

PROJECT INFORMATION

Brief Project Description: Bridge Goup 16A is for repairs to 13 bridges in the Towns of Scituate, Glocester, Smithfield, and Foster, repairs to Bridge No. 605 in the City of Providence, and the Rehabilitation of Glenbridge Avenue Bridge No. 606 in the City of Providence, all in Providence County, Rhode Island. The repair work in this Contract generally consists of, but is not limited to, steel painting, steel repairs, concrete repairs (deck and substructure), concrete sealing, joint repairs and sealing, pavement removal and replacement, waterproofing membrane installation, bridge washing, vegetation clearing, tree removal, riprap installation, and steel guardrail repair and replacement. The Rehabilitation of Glenbridge Avenue Bridge generally consists of, but is not limited to, (a) replacement of the existing bridge superstructure with a steel stringer/cast in place concrete deck superstructure, (b) replacement of the existing pier with a cast in place concrete pier, (c) rehabilitation of the existing abutments, including installation of MSE supported backfill, and (d) furnishing and installing isolation bearings, strip-seal joints, utility supports, and other appetences as shown on the Plans. Roadway work associated with the Rehabilitation of Glenbridge Avenue Bridge generally consists of, but is not limited to: a) full depth reconstruction of the bridge approaches and roadway to the limits of new sidewalk within the project limits, b) micro-milling and overlay, permanent trench patching at specified locations within the project limits, c) adjustment and replacement of roadway utility structures (such as frame & cover, frames & grates, gate valve boxes, etc.), d) removal, resetting and installation of new curbing and sidewalk at the specified locations within the project limits, and e) replacement of signs and new pavement markings and f) utility relocation. Also included in the project is the cleaning, videoing and reporting of an existing BMP. The project wide installation of erosion controls, maintenance and protection of traffic, and water control will be required during the construction period along with all other incidentals complete in place and accepted by the Resident Engineer.

Work Limits: This contract includes 13 bridges located in the Towns of Foster, Glocester, Smithfield and Scituate and one bridge located in the City of Providence, all in Providence County, Rhode Island.

ROADWAYS DIRECTLY AFFECTED BY PROJECT WORK ZONES				
ROADWAY NAME	FROM	TO	City/Town	LENGTH
RI 14 Plainfield Pike	at Bridge 90		Scituate	±360'
US 6 Danielson Pike	at Bridge 93		Scituate	±100'
US 44 Putnam Pike	at Bridge 100		Glocester	±135'
RI 12 Tunk Hill Road	at Bridge 116		Scituate	±10'
US 44 Putnam Pike	at Bridge 155		Smithfield	±30'
RI 102 Victory Highway	at Bridge 174		Scituate	±115'
US 44 Putnam Pike	at Bridge 184		Glocester	±90'
RI 14 Plainfield Pike	at Bridge 191		Scituate	±10'
US 6 Danielson Pike	at Bridge 296		Foster	±120'
Elmdale Road	at Bridge 314		Scituate	±40'
Jackson Flat Road	at Bridge 386		Scituate	±45'
Gleaner Chapel Road	at Bridge 390		Scituate	±30'
Glenbridge Avenue	±75' S of Grimwood St	±60' N of Buttonhole Dr	Providence	±425'
Route 6 Westbound	±360' W of Glenbridge Ave	±1060' E of Glenbridge Ave	Providence	±1460'
Route 6 Eastbound	±820' W of Glenbridge Ave	±1060' E of Glenbridge Ave	Providence	±2000'
Gleaner Chapel Road	at Bridge 782		Scituate	±135'

General Project Schedule: Construction for this project is scheduled to begin in October 2019 and is expected to be completed by October 2021.

TRAFFIC-RELATED WORK RESTRICTIONS

General Restrictions: See attached General Restrictions chart (Attachment A)

Holiday Restrictions: See attached Holiday Restrictions chart (Attachment B)

TEMPORARY TRAFFIC CONTROL PLANS

These RIDOT- and/or Designer-Developed TTC Plans will be used during the work on this project

RIDOT TYPICAL TTC PLANS	Included in:		DESIGNER-DEVELOPED TTC PLANS	Included in:	
	TMP	Plan Set		TMP	Plan Set
<input type="checkbox"/> Mobile Operation	<input type="checkbox"/>	<input type="checkbox"/>	<input type="checkbox"/> TTCP No. 1 thru No. 10 (Volume I)	<input type="checkbox"/>	<input checked="" type="checkbox"/>
<input type="checkbox"/> Work Beyond the Shoulder	<input type="checkbox"/>	<input type="checkbox"/>	<input type="checkbox"/> TTCP General Notes (Volume II)	<input type="checkbox"/>	<input checked="" type="checkbox"/>
<input type="checkbox"/> Shoulder Closure - Two Lane Road	<input type="checkbox"/>	<input type="checkbox"/>	<input type="checkbox"/> TTCP Typical Details (Volume II)	<input type="checkbox"/>	<input checked="" type="checkbox"/>
<input type="checkbox"/> Shoulder Closure - Limited Access	<input type="checkbox"/>	<input type="checkbox"/>	<input type="checkbox"/> Bridge No. 782 TTCP No. 1 and No. 2 (Volume II)	<input type="checkbox"/>	<input checked="" type="checkbox"/>
<input type="checkbox"/> 1-Side Lane Shift - Two Lane Road	<input type="checkbox"/>	<input type="checkbox"/>	<input type="checkbox"/> Bridge No. 296 TTCP (Volume II)	<input type="checkbox"/>	<input checked="" type="checkbox"/>
<input type="checkbox"/> 2-Side Lane Shift - Two Lane Road	<input type="checkbox"/>	<input type="checkbox"/>		<input type="checkbox"/>	<input type="checkbox"/>
<input type="checkbox"/> Lane Shift - Limited Access	<input type="checkbox"/>	<input type="checkbox"/>		<input type="checkbox"/>	<input type="checkbox"/>
<input type="checkbox"/> Lane Closure - Two Lane Road	<input type="checkbox"/>	<input type="checkbox"/>		<input type="checkbox"/>	<input type="checkbox"/>
<input type="checkbox"/> Lane Closure - Four Lane Road	<input type="checkbox"/>	<input type="checkbox"/>		<input type="checkbox"/>	<input type="checkbox"/>
<input type="checkbox"/> Lane Closure - Limited Access	<input type="checkbox"/>	<input type="checkbox"/>		<input type="checkbox"/>	<input type="checkbox"/>
<input type="checkbox"/> Double Lane Closure - Limited Access	<input type="checkbox"/>	<input type="checkbox"/>		<input type="checkbox"/>	<input type="checkbox"/>

PUBLIC INFORMATION PLAN

These strategies will be used to provide information concerning the project to road users and the community

SELECTED STRATEGIES	RESPONSIBILITIES / REQUIREMENTS / SPECIAL CONSIDERATIONS
RIDOT travel advisories news releases	RIDOT TMP Imp. Mngr. to send <u>CMG Restriction Form</u> to Communications min. 48 hours in advance of restriction.
RIDOT travel advisories web site	RIDOT TMP Imp. Mngr. to send <u>CMG Restriction Form</u> to Communications min. 48 hours in advance of restriction.
RIDOT 511 traveler information system	RIDOT TMP Imp. Mngr. to send <u>CMG Restriction Form</u> to TMC min. 48 hours in advance of restriction.
Consultation/coordination w/ stakeholders	RIDOT TMP Imp. Mngr. to send <u>CMG Restriction Form</u> to Communications min. 48 hours in advance of restriction.
Changeable message signs (CMS)	Portable CMS to be used where called for on the Temporary Traffic Control Plans.

TRANSPORTATION OPERATIONS PLAN

These strategies will be used to provide improved transportation operations/safety within project work zones

SELECTED STRATEGIES	RESPONSIBILITIES / REQUIREMENTS / SPECIAL CONSIDERATIONS
Temporary traffic barrier	To be installed at locations shown on the Temporary Traffic Control Plans
Crash attenuators	To be installed at locations shown on the Temporary Traffic Control Plans
Cooperative police enforcement	Police details/flaggers to be provided as needed for traffic control set-ups

PERFORMANCE MONITORING, CHANGES TO TMP, & CONTINGENCIES

The **Contractor's TMP Implementation Manager (if identified below)** is responsible for keeping the portion of the project being used by public traffic in a condition that (1) safely and adequately accommodates such traffic and (2) is in accordance with the Traffic-Related Work Restrictions, the Temporary Traffic Control Plans, and where appropriate, the other transportation management strategies identified above. The **RIDOT TMP Implementation Manager** should inspect the project work zones at initial setup, at the start of each subsequent work day, and just prior to extended breaks in the work (e.g., weekends) for conformance with the Temporary Traffic Control Plans, the ATSSA Quality Guidelines for Work Zone Traffic Control Devices, and where applicable, the other transportation management strategies identified above. He/she should also document work zone-related feedback and/or legitimate complaints that are received from the public through phone calls, in person, in writing, or by electronic mail.

If at any time (1) a significant deviation from any of the strategies included in the TMP (e.g., the use of an alternate construction sequence) is desired by one or more members of the project implementation team, (2) field observations and/or data suggest that impacts to road users are or will be unacceptable, or (3) one or more performance requirements established in the TMP are not being met in the field, the RIDOT TMP Implementation Manager shall report the situation to his/her supervisor or Division/Section/Unit manager. The supervisor / manager will coordinate with the State Traffic Engineer, the Administrator of Project Management, the TMP Implementation Manager(s), the Chief Engineer, and/or other interested parties as appropriate and/or necessary to consider and determine whether revised and/or alternate strategies should be implemented in an effort to lessen the adverse safety and/or mobility impacts of the project. If the supervisor / manager deems that strategy changes should be implemented, the changes shall be documented in a revised version of the TMP and the Administrator of Project Management, the State Traffic Engineer, and the Chief Engineer must approve of the revised TMP prior to their implementation.

If a significant deviation from any of the strategies included in the TMP is requested by the Contractor, unless directed otherwise by the RIDOT the Contractor is responsible for preparing and submitting to the RIDOT TMP Implementation Manager appropriate documentation (e.g., design calculations, analysis reports, Temporary Traffic Control Plans, etc.) showing that the requested change(s) are (1) feasible and (2) expected to result in safety and mobility impacts that are no more adverse than the impacts resulting from the strategies already included in the latest approved TMP. The RIDOT will review and consider the submittal(s) as described in the preceding paragraph and will determine whether the changes should be implemented. If the requested changes are approved by the RIDOT, unless otherwise directed by the RIDOT the Contractor shall prepare and submit to the RIDOT TMP Implementation Manager a revised version of the latest approved TMP in both printed and electronic (Microsoft® Excel) format that documents all of the approved changes. Work to implement the changes shall not begin until the Administrator of Project Management, the State Traffic Engineer, and the Chief Engineer have approved of the revised TMP.

When unexpected events (e.g., crashes, inclement weather, unforeseen traffic demands, etc.) occur in a project work zone where one or more lanes are closed, the RIDOT TMP Implementation Manager or his/her responsible designee should (1) determine whether or not the lane closure(s) can/should be removed in order to improve traffic operations and/or minimize delays and (2) if deemed appropriate, take action to remove the lane closure(s).

Other Requirements:

TMP APPROVALS

All approvals must be obtained prior to start of work.

ADMIN. OF PROJECT MNGMT			STATE TRAFFIC ENGINEER			CHIEF ENGINEER		
Signature:			Signature:			Signature:		
	David Fish, P.E.			Steve Pristawa, P.E.			Robert Rocchio, P.E.	
Date:	7-12-19		Date:			Date:	7-3-19	
Revision #	Initials	Date	Revision #	Initials	Date	Revision #	Initials	Date

TMP IMPLEMENTATION MANAGERS

Trained project managers with the primary responsibility & authority for implementation of this TMP*

RIDOT	CONTRACTOR (if contract work)
Name: <input style="width: 90%;" type="text"/>	Name: <input style="width: 90%;" type="text"/>
Title: <input style="width: 90%;" type="text"/>	Title: <input style="width: 90%;" type="text"/>
Unit: <input style="width: 90%;" type="text"/>	Company/Unit: <input style="width: 90%;" type="text"/>
Office Phone: <input style="width: 90%;" type="text"/>	Office Phone: <input style="width: 90%;" type="text"/>
Mobile Phone: <input style="width: 90%;" type="text"/>	Mobile Phone: <input style="width: 90%;" type="text"/>
E-Mail: <input style="width: 90%;" type="text"/>	E-Mail: <input style="width: 90%;" type="text"/>

* Trained means that the manager has (or will) successfully completed an appropriate course identified in RIDOT Training Guidelines for Personnel Responsible for Work Zone Safety & Mobility prior to Dec. 31, 2009.

General Restrictions Chart

Location		MINIMUM NUMBER OF LANES & SHOULDERS TO REMAIN OPEN TO TRAFFIC ¹⁻⁶								
		Time of Day		Day of Week						
		From	To	SUN	MON	TUES	WED	THURS	FRI	SAT
PHASE I GLENBRIDGE AVE BRIDGE REPLACE- MENT	Glenbridge Avenue, Providence	0:00	5:00	1L (Alt)	DETOUR ⁵	DETOUR ⁵	DETOUR ⁵	DETOUR ⁵	DETOUR ⁵	1L (Alt)
		5:00	21:00	1L (Alt)	1L (Alt)	1L (Alt)	1L (Alt)	1L (Alt)	1L (Alt)	1L (Alt)
		21:00	24:00	DETOUR ⁵	DETOUR ⁵	DETOUR ⁵	DETOUR ⁵	DETOUR ⁵	1L (Alt)	1L (Alt)
	Route 6, Providence	0:00	5:00	1 L	DETOUR ⁶	DETOUR ⁶	DETOUR ⁶	DETOUR ⁶	DETOUR ⁶	2 L (A)
		5:00	6:00	1 L	1 L	1 L	1 L	1 L	1 L	2 L (A)
		6:00	21:00	2 L (A)	2 L (A)	2 L (A)	2 L (A)	2 L (A)	2 L (A)	2 L (A)
		21:00	24:00	1 L	1 L	1 L	1 L	1 L	2 L (A)	2 L (A)

PHASE II BRIDGE REPAIRS	TWO-LANE ROADWAYS - RI 14 Plainfield Pike, US 6 Danielson Pike, RI 12 Tunk Hill Road, RI 102 Victory Highway, Elmdale Road, Jackson Flat Road, Scituate	0:00	7:00	ALL	ALL	ALL	ALL	ALL	ALL	ALL
		7:00	15:00	ALL	1L (Alt)	1L (Alt)	1L (Alt)	1L (Alt)	1L (Alt)	ALL
		15:00	24:00	ALL	ALL	ALL	ALL	ALL	ALL	ALL
	TWO-LANE ROADWAYS - US 44 Putnum Pike, Smithfield and Glocester	0:00	9:00	ALL	ALL	ALL	ALL	ALL	ALL	ALL
		9:00	15:00	ALL	1L (Alt)	1L (Alt)	1L (Alt)	1L (Alt)	1L (Alt)	ALL
		15:00	24:00	ALL	ALL	ALL	ALL	ALL	ALL	ALL
	US 6 Danielson Pike, Foster	0:00	7:00	2 L (A)	2 L (A)	2 L (A)	2 L (A)	2 L (A)	2 L (A)	2 L (A)
		7:00	15:00	2 L (A)	1L (Alt)	1L (Alt)	1L (Alt)	1L (Alt)	1L (Alt)	2 L (A)
		15:00	24:00	2 L (A)	2 L (A)	2 L (A)	2 L (A)	2 L (A)	2 L (A)	2 L (A)
	MULTI-LANE - US 44 Putnum Pike, Glocester	0:00	7:00	ALL	ALL	ALL	ALL	ALL	ALL	ALL
		7:00	15:00	ALL	1 L	1 L	1 L	1 L	1 L	ALL
		15:00	24:00	ALL	ALL	ALL	ALL	ALL	ALL	ALL
	RI Route 6 North Scituate Bypass, Scituate	0:00	7:00	ALL	ALL	ALL	ALL	ALL	ALL	ALL
		7:00	15:00	ALL	2 L (B)	2 L (B)	2 L (B)	2 L (B)	2 L (B)	ALL
		15:00	24:00	ALL	ALL	ALL	ALL	ALL	ALL	ALL
	DETOUR- Gleaner Chapel Road, Scituate	0:00	24:00	DETOUR	DETOUR	DETOUR	DETOUR	DETOUR	DETOUR	DETOUR

LEGEND

ALL	All travel lanes and shoulders shall remain open to traffic
1L (Alt)	A minimum of one 11-foot wide travel lane shall remain open to alternating traffic during this time period.
1 L	A minimum of one 11-foot wide travel lane in each direction shall remain open to traffic
2 L (A)	A minimum of two 12-foot wide travel lanes in each direction shall remain open to traffic
2 L (B)	A minimum of two 11-foot wide travel lanes in each direction shall remain open to traffic
DETOUR	Full Road closure with detour set-up

NOTES

- The set-up and break-down of temporary traffic control devices within a traveled way shall be construed as a closure of that traveled way.
- The provisions noted herein shall not free the Contractor from his responsibility to conduct all work in such a manner that assures the least possible obstruction to traffic.
- Access to and egress from all side streets, driveways, businesses, and residences intersecting the Project work zones shall be maintained at all times unless otherwise noted or shown on the Plans.
- At locations with a sidewalk(s), a minimum of one sidewalk on one side of the roadway shall be open to pedestrian traffic at all times.
- 1L (Alt) shall be maintained on Glenbridge Avenue unless otherwise approved by the Engineer.
- The closure of Route 6 may be implemented during the removal and placement of bridge superstructure beams and shall not be used during other periods of construction, unless otherwise approved by the Engineer.
- Gleaner Chapel Road shall not be closed for more than 75 calendar days.

Addendum No. 1

Holiday Restrictions

NOTE: IN CASE OF DISCREPANCY BETWEEN THESE HOLIDAY RESTRICTIONS AND THE GENERAL RESTRICTIONS (ATTACHMENT A), THESE HOLIDAY RESTRICTIONS SHALL GOVERN.

No lane and/or shoulder closures allowed after 13:00 on the Friday preceding a holiday weekend.

EASTER SUNDAY

No lane and/or shoulder closures allowed on Saturday.

No lane and/or shoulder closures allowed on Sunday until 20:00 (after 20:00, General Restrictions shall apply).

NEW YEAR'S DAY, INDEPENDENCE DAY, & CHRISTMAS DAY

No lane and/or shoulder closures allowed after 13:00 on the day before the holiday.

No lane and/or shoulder closures allowed on the holiday.

VETERANS DAY

No lane and/or shoulder closures allowed after 13:00 on the day before the holiday.

No lane and/or shoulder closures allowed on Veterans Day until 20:00 (after 20:00, General Restrictions shall apply).

DR. MARTIN LUTHER KING JR. DAY, VICTORY DAY, & COLUMBUS DAY

No lane and/or shoulder closures allowed on Saturday and/or Sunday.

No lane and/or shoulder closures allowed on Monday until 20:00 (after 20:00, General Restrictions shall apply).

MEMORIAL DAY & LABOR DAY

No lane and/or shoulder closures allowed on Saturday and/or Sunday.

No lane and/or shoulder closures allowed on Monday until 22:00 (after 22:00, General Restrictions shall apply).

THANKSGIVING DAY

No lane and/or shoulder closures allowed after 13:00 on the Wednesday preceding Thanksgiving Day.

No lane and/or shoulder closures allowed on Thanksgiving Day, Friday, Saturday, and/or Sunday.

APPENDIX J

National Grid Gas Requirements

National Grid Gas Guidelines and Notes

1. Contractor shall follow the guidelines listed in National Grid's "Guidelines for Working Around Gas Utilities", attached to this Appendix.
2. Depth of gas facilities are unknown and could be shallow, use caution when working in the vicinity of any gas facility, hand digging only.
3. National Grid requires a minimum of one foot of separation between crossing utilities and existing gas facilities.
4. National Grid requires a minimum of three feet of separation between the gas main and the parallel facility for steel and plastic gas mains. For cast iron gas main see "Cast Iron Involvement" section.
5. If a gas main is exposed or going to be exposed call national dispatch office at 877-304-1203 for an inspector to be dispatched to the site to inspect the line before they are backfilled.
6. For any exposed gas facility, provide backfill materials and compact the backfill materials in accordance with National Grid's "Guidelines for Backfill and Compaction Around Gas Pipes", attached to this Appendix.
7. All gas valve boxes shall be adjusted to the new road/sidewalk surface. Valve boxes, if required for replacement, can be obtained at national grid's providence location, 477 Dexter Street, Providence, RI or Lincoln location, 642 George Washington Highway (quantities 5 or less). Gas valve boxes must be accessible at all times to allow them to be operated by National Grid in the event of an emergency.
8. All cathodic protection boxes (boxes that contain wires that go down to the gas main) shall be adjusted to the new road/sidewalk surface. Care shall be exercised when adjusting so as not to damage the wires. If the wires are damaged or if assistance is needed, contact National Grid Corrosion Engineering to visit the site. Contact Asad Akinfolarin at 401-215-5678 or Ron Vincent at 617-438-5192. New boxes, if required, can be obtained at 477 Dexter Street, Providence, RI or 642 George Washington Highway, Lincoln, RI (quantities 5 or less). Contractor shall follow the guidelines listed in National Grid's "Guidelines for Working Around Corrosion Control System Components", attached to this Appendix.
9. Due to system reliability and public safety concerns, it is national grid's practice to restrict all construction work on or near gas facilities between November 15th and April 15th. All scheduled work should be completed between April 15th and November 15th. As gas usage peak during the months of December to March driven by heating needs, National Grid's priority is to provide our customers with safe and reliable gas service. Any work on or near the gas facility will expose our customers to unnecessary risk. Exceptions will be considered on a case by case basis. Approvals from gas control, operational engineering, and project engineering will be required for these cases.

For a gas leak call 800-640-1595.

For a damaged gas facility call 800-870-1664.

CAST IRON INVOLVEMENT

If excavating parallel to or crossing a cast iron gas facility then encroachment of the cast iron line is a possibility and a concern where replacement may be required. Whenever an excavation is in the vicinity of a cast iron gas main contact national grid encroachment engineer to be on site, call Chris Ferranti at 401-465-9064. Guidelines in avoiding an encroachment are listed in national grid's "Cast Iron Gas Main Encroachment Prevention", document attached.

If excavating parallel to or crossing a cast iron facility that is greater than 8", this line is not covered under the encroachment guidelines and law. National Grid does not allow more than 10' of gas main to be exposed and only

allows (1) bell & spigot joint to be exposed. If a bell & spigot joint is exposed said joint must be leak clamped before backfill unless a clamp is already in place. Provide backfill materials and compact the backfill materials in accordance with National Grid's "Guidelines for Backfill and Compaction Around Gas Pipes", attached to this Appendix. Minimum 95% compaction of the soil below a cast iron is always required. Always call National Grid Damage Prevention Department for an inspector to be dispatched to site. Call Corey Allison 617-212-6317 or Mark Huck 508-562-1240.

ABANDONED GAS MAIN

National Grid will purge our old gas main of gas, wipe test sample the inside of the pipe, cap the ends and abandon in place. Pipe four inches and less in diameter can't be sampled; this pipe will be assumed to be contaminated. If the wipe test results show PCB contamination and a section or sections need to be removed by the contractor then there are two possibilities: if the quantity to be removed is small the Contractor could transport the removed sections with sealed ends to either our Allens Avenue facility at 642 Allens Avenue, Providence, or our Dexter Street facility at 477 Dexter Street in Providence and place them in our red open top "Pipe to be Cleaned" container on site. National Grid would then handle the cleaning and proper disposal; or the Contractor could hire Clean Harbors to deliver an open top container to the site, place the removed section into the dumpster and then arrange to have Clean Harbors pick up the container. The charges associated with delivery, onsite rental and pick up of the dumpster would be the Contractor's responsibility and National Grid's responsibility will be for the cleaning and proper disposal. National Grid also requires that the open pipe ends of the abandoned pipe remaining in the ground be capped or sealed with expanding foam.

GUIDELINES FOR BACKFILL AND COMPACTION AROUND GAS PIPES

PERMANENT BACKFILL AND COMPACTION

DESCRIPTION

This work shall consist of backfilling and compacting all disturbed material at and around existing gas pipes and facilities. Size of pipe, material, length of exposed pipe, location of pipe, etc. will all follow the same set of Standards and Specifications stipulated by Nationalgrid Company. If design plans call for gas pipes to be exposed and supported (sheeting methods not used), then at the time of backfill, all disturbed material below the invert of the gas pipe shall be removed and replaced with suitable roadway or trench excavation material or bedding material. The contractor will not be allowed to replace this disturbed material with the same existing material if it has now been mixed with adjacent silty subsoil (clays) and fines. Well-graded gravel and sands will be used to replace the unsuitable material when no excess suitable material is available on site. Soils with high humus or mineral content should not be used to for backfill because they can promote electrolytic or bacterial attack.

Backfilling the gas pipe should begin immediately after the work in that location is complete. The region within 6" alongside and on top of the gas pipe shall be backfilled with padding sand (free of cinders, ash, and rock). In no case shall the material used for backfilling in this region contain any stones. Backfill shall consist of suitable materials (medium to coarse sands with little or no silts) placed in layers of not more than 8" to 12" after compaction.

Trench spoil material shall be suitable for backfilling above the padding material as long as rocks with a diameter larger than 3" are removed. The layers shall be mechanically compacted to the industry standard of 95% or until a density comparable to the unexcavated material is achieved. In some instances, flooding with water is an acceptable method of compaction but only if the back-fill material is clean, coarse, and adequate drainage is existent. The above specified backfill material is essential in order to attain the degree of compaction necessary to avoid future settlement.

Tracing Wire, if necessary, shall be installed 2" to 6" below Plastic gas pipes.

Warning Tape shall be installed approximately 12" above the gas pipe.

A minimum of 2" temporary pavement shall be applied over the trench as soon as possible.

GUIDELINES FOR WORKING AROUND CORROSION CONTROL SYSTEM COMPONENTS

DESCRIPTION

This guideline shall control work around existing Corrosion Control components. Replacement of test stations, anodes and test wire leads shall comply with Standards and Specifications stipulated by Nationalgrid. If design plans call for work in the area of Corrosion Control components, care must be taken to prevent damage to such components.

GENERAL NATIONALGRID CONSIDERATIONS

The contractor shall perform replacement of damaged corrosion control test boxes, resetting of disturbed test boxes, and ensure a minimum of 12" of excess wire above the rim of the test box after set to finished grade. Wires shall not be pulled taught to achieve the 12" above the box, as this will cause stress on the wire connection at the main. Wires needing to be lengthened, damaged corrosion control components i.e. wires, or wire coating, shall require notification to the Corrosion Control Department (525-5610 or 474-5171) to initiate inspection/repair or replacement of the damaged components.

Backfilling exposed Corrosion Control wire components should begin immediately after the work in that location is complete. The region within 6" alongside and on top of the connector wires shall be backfilled with padding sand (free of cinders, ash, and rock). Test wire leads must be kept with enough slack to prevent stress on the points where the wires connect to the gas main. Trench spoil material shall be suitable for backfilling above the padding material as long as rocks with a diameter larger than 3" are removed. The 8" to 12" backfill layers shall be mechanically compacted to the industry standard of 95%.



10/01/12

Guidelines for Working Around Gas Utilities

Notification of Construction

National Grid requests at least six week advanced notification prior to the start of construction to perform scheduled work in the proposed project area. Be aware that some gas work cannot be performed during the normal heating season.

Support and Protect

Contractor must call Dig Safe to have the gas mains and services marked out before construction. Care must be exercised when saw cutting over any gas infrastructure, especially services, which are more shallow than the main. Depth of gas mains vary. Contractor shall dig test pits in order to ascertain exact locations, cover and invert elevations, clearances, alignment and operating status of existing gas facilities. Contractor shall exercise extreme caution when excavating in the vicinity of any gas facility. Hand excavation shall be performed to locate all gas facilities and whenever digging within 24" of gas facilities. If cover over gas piping is removed the required cover must be replaced, or if not feasible, National Grid must be notified for review of the issue. Undermined gas pipe must be adequately supported and protected from damage. Contact National Grid engineer for guidelines regarding proper pipe support. Significant vibration from pile driving and such may negatively impact gas facilities, particularly cast iron mains and regulator station vaults. Contact National Grid engineer prior to performing such activities as well as operations which may undermine gas facilities such as micro-tunneling, jacking, directional drilling, etc.

Gas Leaks

For any gas leak please call the appropriate number immediately.

Greater Boston - 800-233-5325

Other Massachusetts – 800-548-8000

Rhode Island – 800-640-1595

Types of Gas Facilities

Gas mains and services are made of several different materials and contain a wide range of pressures. Typical materials used for buried gas pipe includes bare steel, coated steel, plastic, cast iron, wrought iron, ductile iron, and copper. Never assume that a pipe is not gas. At times gas lines are inserted into older lines to save excavation cost.

Exposure of Gas Facilities

If any gas mains or services become exposed, National Grid must be notified to inspect the line before backfilling. Also any damage that may have been made to the pipe or pipe coating will need to be repaired by National Grid before backfilling. Contact our Dispatch office at (877) 304-1203 for inspection. It is important that even minor damage or scrapes be reported to National Grid. Backfill shall be 6" of sand around the gas line and clean compacted fill above.



Regulator Stations

Gas regulator stations are particularly critical facilities and National Grid must be notified whenever work is to take place within 200 feet of a station. Regulator stations are typically in buried vaults accessed through either manhole covers or aluminum doors. **ONLY AUTHORIZED NATIONAL GRID EMPLOYEES SHALL OPEN A REGULATOR STATION VAULT.** Be aware that a complex nest of piping and valves often exists in the vicinity outside the vaults.

Blasting

National Grid must be notified of any blasting that will take place within 200 feet of a gas utility. National Grid must be supplied with a detailed blast plan for blasting in the vicinity of gas facilities. The evaluation of the blast plan by a National Grid engineer may take some time, therefore, blast plan data should be submitted at least two weeks prior to the planned blasting. As a general rule blasting will not be permitted within 10 feet of a gas line and PPV at the nearest gas pipe shall not exceed 5 in/sec. PPV at the nearest gas main shall be monitored.

Valves

Access to gas valves must be maintained throughout construction and left at grade at the end of construction. Should valve boxes be damaged and need to be replaced National Grid will supply replacements upon request. **NEVER OPERATE A GAS VALVE. ONLY NATIONAL GRID SHALL OPERATE GAS VALVES.**

Clearance

Adequate clearance must be provided when installing other utilities, foundations, structures, etc. Contact National Grid engineer for guidance.

Questions and Answers For:

Statewide Bridge Preservation Activities 2019-CB-048

Please Note: *If this is the first time accessing our system on our new web site, you will be required to reset your password.*

**The ask question function is now disabled;
please call 401-563-4100 with any new questions.**

Date Asked: 07/11/2019

Date Answered: 07/12/2019

Poster: Anthony Mesiti

Company: Cardi Corporation

Question:

ITEM 201.0407 - R & D PAVEMENT AND RIGID BASE. - THIS ITEM IS LOACTED ON RT 6 BUT THERE IS AN ITEM 201.0420 - R & D CONCRETE BASE. PLEASE CLARIFY THE DIFFERENCE FROM THE TWO ITEMS.

Answer:

Item Code 201.0407 ♦REMOVE AND DISPOSE PAVEMENT AND RIGID BASE♦ applies to the existing pavement and rigid base around the median barrier at the pier. Item Code 201.0420 ♦REMOVE AND DISPOSE CONCRETE SLAB♦ applies to the existing concrete slab on top of the median barrier at the pier.

Date Asked: 07/01/2019

Date Answered: 07/02/2019

Poster: Anthony Mesiti

Company: Cardi Corporation

Question:

Are stay-in-place forms allowed?

Answer:

Per Deck Slab Note 7 on Sheet 49, stay-in-place forms are permitted.

Date Asked: 06/28/2019

Date Answered: 06/28/2019

Poster: Gary Garzone

Company: Contracts

Question:

This project is Advertised as "Statewide Bridge Preservation Activities" on both the DOT and State Purchases web portals while the Contract Documents refer to it as "Bridge Group 16A - FOS, GLO,PVD,SCI,SMI". Are they the same Project ?

Answer:

Yes they are the same project. The Contract Number is 2019-CB-048.



Table of Contents - Distribution of Quantities

Project Name - Bridge Group 16A - FOS, GLO, PVD, SCI, SMI

Estimate Name - Addendum 1

R.I. Contract No. - 2019-CB-048

FAP Nos: BRO-0606(001), BRO-PRES(006)

ItemCode	Description	Page
201.0302	CUTTING AND DISPOSING ISOLATED TREES AND STUMPS (24'' OR PLUS)	1
201.0401	REMOVE AND DISPOSE GRANITE CURB	1
201.0403	REMOVE AND DISPOSE SIDEWALKS	1
201.0407	REMOVE AND DISPOSE PAVEMENT AND RIGID BASE	1
201.0409	REMOVE AND DISPOSE FLEXIBLE PAVEMENT	2
201.0414	REMOVE AND DISPOSE PIPE - ALL SIZES	2
201.0415	REMOVE AND DISPOSE GUARDRAIL AND POST ALL TYPES	2
201.0420	REMOVE AND DISPOSE CONCRETE SLAB	3
201.0430	REMOVE AND DISPOSE CONCRETE MEDIAN BARRIER	3
201.0610	REMOVE AND DISPOSE DIRECTIONAL, WARNING, REGULATORY, SERVICE, AND STREET SIGNS	3
201.9901	CLEARING	3
201.9902	VINE REMOVAL	4
201.9952	SAMPLE AND TEST CONTAMINATED SOIL	4
202.0100	EARTH EXCAVATION	4
202.0201	ROCK EXCAVATION MECHANICAL	4
202.0500	CHANNEL EXCAVATION EARTH	5
202.9951	** ITEM DELETED **	5
203.0100	STRUCTURAL EXCAVATION EARTH	5
203.0650	CRUSHED STONE FILL UNDER STRUCTURES	5
203.0700	PERVIOUS FILL	5
203.9902	MSE BACKFILL	6
204.0100	TRIMMING AND FINE GRADING	6
206.0301	COMPOST FILTER SOCK	6
206.9901	INLET SEDIMENT CONTROL DEVICE	7
212.2100	MAINTENANCE AND CLEANING OF EROSION AND POLLUTION CONTROLS	8
213.0100	PLACEMENT OF MILLINGS BENEATH GUARDRAIL	8
302.0100	GRAVEL BORROW SUBBASE COURSE	9
401.1000	CLASS 19.0 HMA	9
401.2100	MODIFIED CLASS 12.5 HMA	9
401.3005	CLASS 9.5 HMA FOR MISCELLANEOUS WORK	10
401.3100	MODIFIED CLASS 9.5 HMA	10
401.9901	MODIFIED CLASS 9.5 HMA FOR BRIDGE DECKS	10
402.9901	FRICTION COURSE	10
403.0300	ASPHALT EMULSION TACK COAT	11
409.0000	SAW & SEAL TRANSVERSE JOINTS IN BITUMINOUS CONCRETE PAVEMENT OVER RIGID BASE	11
501.0103	PORTLAND CEMENT CONCRETE BASE	11
601.0300	CLASS A PORTLAND CEMENT CONCRETE	12
702.0517	FRAME AND GRATE, STANDARD 6.3.2	12
702.0542	GRANITE APRON STONE 5FT. STANDARD 7.3.7	12
702.9901	NATIONAL GRID TWO WAY MANHOLE	12
703.9901	6 INCH PERFORATED PVC SUBDRAIN PIPE	12
704.0200	RECONSTRUCT MANHOLE/CORBEL CONES	12
705.1300	RECONSTRUCT CB TYPE 'D' TO CATCH BASIN WITH GUTTER INLET	13
706.9000	PLUG AND CAP PIPE ALL SIZES	13
707.0900	ADJUST MANHOLES TO GRADE	13
707.1000	ADJUST SANITARY MANHOLE	13
707.1100	ADJUST CATCH BASINS	13
707.1900	ADJUST FRAME & COVER TO GRADE	14
707.2000	ADJUST FRAME AND GRATE TO GRADE	14
708.9040	CLEANING AND FLUSHING PIPE ALL SIZES	15
708.9041	CLEANING CATCH BASINS ALL TYPES AND SIZES	17

Table of Contents - Distribution of Quantities

Project Name - Bridge Group 16A - FOS, GLO, PVD, SCI, SMI

Estimate Name - Addendum 1

R.I. Contract No. - 2019-CB-048

FAP Nos: BRO-0606(001), BRO-PRES(006)

ItemCode	Description	Page
708.9042	CLEANING MANHOLES ALL TYPES AND SIZES	18
708.9901	PIPELINE VIDEO INSPECTION AND REPORTING	19
711.0110	3'' PAVED WATERWAY CLASS I-1 STANDARD 8.4.0	19
713.8269	ADJUST WATER GATE BOXES TO GRADE	19
713.8300	ADJUST GAS GATE BOXES TO GRADE	19
800.9901	GLENBRIDGE AVE BRIDGE NO. 606	19
802.9901	TEMPORARY PIER SHORING	19
803.0100	REMOVE AND DISPOSE EXISTING SUPERSTRUCTURE	20
803.0200	REMOVE AND DISPOSE EXISTING SUBSTRUCTURE	20
803.0300	PARTIAL REMOVAL AND DISPOSAL OF EXISTING CONCRETE MASONRY	20
803.0500	TEMPORARY DECK UNDERSIDE AND SIDE PROTECTIVE SHIELDING	20
803.9901	CONCRETE HAUNCH REMOVAL	20
805.9901	TEMPORARY SUPPORT OF EXCAVATION	21
807.9901	RESET STONE MASONRY WALL	21
807.9902	POINTING AND GROUTING MASONRY ON HISTORIC BRIDGES	21
808.0321	CONCRETE SUBSTRUCTURE CLASS HP 3/4'' WALL CAP	21
808.0508	CONCRETE SUBSTRUCTURE CLASS XX 3/4'' APPROACH SLABS	21
808.0602	CONCRETE SUBSTRUCTURE CLASS HP 3/4'' BACKWALLS	21
808.1501	CONCRETE SUPERSTRUCTURE CLASS HP 3/4'' BRIDGE DECKS	22
808.1502	CONCRETE SUPERSTRUCTURE CLASS HP 3/4'' BRIDGE SIDEWALKS	22
808.1503	CONCRETE SUPERSTRUCTURE CLASS HP 3/4'' PARAPETS	22
808.9901	GROUT FOR SCOUR REPAIRS	22
810.0210	GALVANIZED BAR REINFORCEMENT GRADE 60	23
810.0702	WELDED WIRE FABRIC (GALVANIZED)	23
813.0210	HEAT-APPLIED PREFABRICATED MEMBRANE	23
817.2112	REPAIRS TO STRUCTURE CONCRETE MASONRY - PATCHING MORTAR	23
818.2020	PORTLAND CEMENT CONCRETE DECK REPAIRS (PARTIAL DEPTH REMOVAL)	23
819.0800	DRILL AND GROUT REINFORCING DOWELS	24
820.0100	CONCRETE SURFACE TREATMENT PROTECTIVE SEALER	24
820.0300	HIGH PRESSURE WATER CLEANING OF BRIDGE STRUCTURES	24
820.9902	HIGH-PRESSURE WATER CLEANING OF HISTORIC BRIDGE STRUCTURE	24
820.9903	HIGH PRESSURE WATER CLEANING OF CONCRETE AND MASONRY SURFACES	25
820.9904	HIGH PRESSURE WATER CLEANING - BRIDGE NO. 605	25
821.1690	SAW & SEALING JOINTS IN BITUMINOUS CONCRETE PAVEMENT	25
822.1695	SILICONE HIGHWAY JOINT SEALER	25
823.1750	ASPHALTIC EXPANSION JOINT SYSTEM	25
824.9901	RESET INTERMEDIATE DIAPHRAGM	26
825.8040	PAINTING EXISTING STRUCTURAL STEEL	26
832.8050	BRIDGE MINIMUM CLEARANCE SIGNS	26
834.0111	VERTICAL FACE GRANITE CURB STRAIGHT 10'' REVEAL	26
836.0100	STRUCTURAL CONCRETE CRACK REPAIR BY EPOXY-RESIN BASE ADHESIVE INJECTION	26
837.0100	REPAIRS TO STRUCTURAL CONCRETE MASONRY WITH INTEGRALLY COLORED CONCRETE OR PATCHING MORTAR	27
839.0100	PARTIAL-DEPTH REMOVAL AND DISPOSAL OF BITUMINOUS PAVEMENT FROM CONCRETE BRIDGE DECKS	27
839.0200	FULL DEPTH REMOVAL AND DISPOSAL OF BITUMINOUS PAVEMENT FROM CONCRETE BRIDGE DECKS	27
901.0191	GUARDRAIL STEEL BEAM ANCHORAGE TRAILING END SECTION STANDARD 34.3.4	27
901.0193	GUARDRAIL STEEL BEAM SINGLE FACE STANDARD 34.2.0	28

Table of Contents - Distribution of Quantities

Project Name - Bridge Group 16A - FOS, GLO, PVD, SCI, SMI

Estimate Name - Addendum 1

R.I. Contract No. - 2019-CB-048

FAP Nos: BRO-0606(001), BRO-PRES(006)

ItemCode	Description	Page
901.0194	GUARDRAIL CONNECTION TO BARRIER - APPROACH END SECTION - STD. 34.3.7	28
901.0197	GUARDRAIL CONNECTION TO EXISTING ENDPOST APPROACH END SECTION, STANDARD 34.3.5	28
901.0199	GUARDRAIL END TREATMENT, ENERGY ABSORBING TERMINAL	28
903.0410	TEMPORARY CHAIN LINK FENCE	29
903.0411	TEMPORARY CHAIN LINK GATE	29
905.0110	PORTLAND CEMENT SIDEWALK MONOLITHIC STANDARD 43.1.0	29
906.0110	GRANITE CURB, QUARRY SPLIT STRAIGHT, STANDARD 7.3.0	30
906.0111	GRANITE CURB, QUARRY SPLIT CIRCULAR, STANDARD 7.3.0	30
906.0118	6' GRANITE TRANSITION CURB, QUARRY SPLIT SPECIAL TRANSITION STANDARD 7.3.2	30
906.0120	GRANITE WHEELCHAIR RAMP CURB STANDARDS 7.3.3, 43.3.0 AND 43.3.1	30
906.0131	GRANITE RAMP STONE CIRCULAR STANDARD 7.3.9	31
906.0602	BITUMINOUS BERM STANDARD 7.5.1	31
906.0700	REMOVE, HANDLE, HAUL TRIM RESET CURB EDGING, STRAIGHT, CIRCULAR ALL TYPES	31
907.0100	WATER FOR DUST CONTROL	31
909.3021	PRECAST MEDIAN BARRIER SINGLE-FACED STANDARD 40.2.1	32
909.9901	PRECAST MEDIAN BARRIER-TRANSITION UNIT	32
909.9902	PRECAST MEDIAN VERTICAL BARRIER-54 INCH HEIGHT	32
910.9901	RUMBLE STRIPS	32
914.5010	FLAGPERSONS	33
914.5020	FLAGPERSONS - OVERTIME	33
916.0600	SHOCK ABSORBING BARRIER MODULES	33
916.0650	REMOVE, RELOCATE AND RESET SHOCK ABSORBING BARRIER MODULES	33
919.0101	TEST PITS	34
920.0200	FILTER FABRIC FOR RIP-RAP	34
920.9901	STONE RIPRAP ALL TYPES	34
920.9902	BEDDING FOR RIPRAP FS-3	34
921.9901	REMOVE AND RESET SLOPE PAVING 4X12X2	34
922.0100	TEMPORARY CONSTRUCTION SIGNS STANDARD 29.1.0 AND 27.1.1	35
923.0105	DRUM BARRICADE STANDARD 26.2.0	37
923.0120	PLASTIC PIPE BARRICADE STANDARD 26.3.0	37
923.0200	FLUORESCENT TRAFFIC CONES STANDARD 26.1.0	38
923.9901	LONGITUDINAL PEDESTRIAN CHANNELIZING DEVICES	38
924.0113	ADVANCE WARNING ARROW PANEL	38
925.0112	PORTABLE CHANGEABLE MESSAGE SIGN	38
926.9901	UNANCHORED BARRIER FOR TEMPORARY TRAFFIC CONTROL (MASH TL- 3)	38
926.9902	ANCHORED BARRIER FOR TEMPORARY TRAFFIC CONTROL (MASH TL-3)	39
926.9903	UNANCHORED BARRIER FOR TEMPORARY TRAFFIC CONTROL (MASH TL- 4)	39
928.0500	SHADOW OR ADVANCE WARNING VEHICLE WITH IMPACT ATTENUATOR AND FLASHING ARROW BOARD	39
929.0110	FIELD OFFICE	39
931.0110	CLEANING AND SWEEPING PAVEMENT	39
932.0100	CUTTING AND MATCHING ASPHALT	40
932.0110	TRANSVERSE PAVEMENT CUT AND MATCH STANDARD 47.1.1	40
932.0200	FULL-DEPTH SAWCUT OF BITUMINOUS PAVEMENT	40
932.0210	FULL DEPTH SAWCUT OF BITUMINOUS PAVEMENT AND RIGID BASE	41
932.0220	FULL DEPTH SAWCUT OF BITUMINOUS SIDEWALK/DRIVEWAY	41

Table of Contents - Distribution of Quantities

Project Name - Bridge Group 16A - FOS, GLO, PVD, SCI, SMI

Estimate Name - Addendum 1

R.I. Contract No. - 2019-CB-048

FAP Nos: BRO-0606(001), BRO-PRES(006)

ItemCode	Description	Page
932.0230	FULL DEPTH SAWCUT OF PORTLAND CEMENT CONCRETE SIDEWALK/DRIVEWAY	41
935.0400	REMOVING BITUMINOUS PAVEMENT BY MICRO MILLING	42
936.0100	MOBILIZATION AND DEMOBILIZATION	42
937.0200	MAINTENANCE AND MOVEMENT TRAFFIC PROTECTION	42
942.0200	DETECTABLE WARNING PANEL STANDARD 48.1.0	42
943.0200	TRAINEE MAN-HOURS	43
L01.0102	LOAM BORROW 4 INCHES DEEP	43
L01.0104	PLANTABLE SOIL 4 INCHES DEEP	43
L02.0101	GENERAL HIGHWAY SEEDING (TYPE 1)	43
L02.0102	RESIDENTIAL SEEDING (TYPE 2)	44
L10.0101	MECHANICAL TREE AND SHRUB ROOT PRUNING	44
T05.1030	ADJUST HANDHOLE TO GRADE	44
T06.9901	2 - 5" PVC ELECTRIC CONDUITS (ENCASED IN CONCRETE)	44
T06.9902	6 - 5" PVC ELECTRIC CONDUITS (ENCASED IN CONCRETE)	44
T06.9903	6-5" PVC ELECTRIC CONDUIT (SUPPORTED ON STRUCTURE)	45
T07.9901	REMOVE, STOCKPILE, AND RESET STREET LIGHTS ON UTILITY POLE	45
T12.9901	PORTABLE TRAFFIC CONTROL SIGNAL SYSTEM	45
T15.0100	DIRECTIONAL REGULATORY AND WARNING SIGNS	45
T15.0110	GUIDE SIGNS STANDARD 29.2.0	46
T15.1000	STREET SIGN ASSEMBLY STD. 24.6.1	46
T18.9901	GUARDRAIL END DELINEATORS - RED	46
T18.9902	GUARDRAIL END DELINEATOR - GREEN	46
T20.0706	6 INCH WHITE WATERBORNE PAINT PAVEMENT MARKINGS	46
T20.0712	12 INCH WHITE WATERBORNE PAINT PAVEMENT MARKINGS	47
T20.0724	24 INCH WHITE WATERBORNE PAINT PAVEMENT MARKINGS	47
T20.0904	4 INCH YELLOW WATERBORNE PAINT PAVEMENT MARKINGS	47
T20.0906	6 INCH YELLOW WATERBORNE PAINT PAVEMENT MARKINGS	47
T20.2406	6 INCH WHITE FINAL EPOXY RESIN PAVEMENT MARKINGS	48
T20.2412	12 INCH WHITE FINAL EPOXY RESIN PAVEMENT MARKINGS	48
T20.2424	24 INCH WHITE FINAL EPOXY RESIN PAVEMENT MARKINGS	48
T20.2506	6 INCH WHITE INTERIM EPOXY RESIN PAVEMENT MARKINGS	49
T20.2524	24 INCH WHITE INTERIM EPOXY RESIN PAVEMENT MARKINGS	49
T20.2804	4 INCH YELLOW FINAL EPOXY RESIN PAVEMENT MARKINGS	49
T20.2806	6 INCH YELLOW FINAL EPOXY RESIN PAVEMENT MARKINGS	49
T20.2906	6 INCH YELLOW INTERIM EPOXY RESIN PAVEMENT MARKINGS	50
T20.4506	REMOVE PAVEMENT MARKING LINE - LESS THAN OR EQUAL TO 6 INCHES WIDE	50
T20.4508	REMOVE PAVEMENT MARKING LINE - GREATER THAN 6 INCHES WIDE	50

Table of Contents - Distribution of Quantities

Project Name - Bridge Group 16A - FOS, GLO, PVD, SCI, SMI

Estimate Name - Addendum 1

R.I. Contract No. - 2019-CB-048

FAP Nos: BRO-0606(001), BRO-PRES(006)

ItemCode	Description	Page
T20.9901	REFLECTORIZED RECESSED PAVEMENT MARKER (SLOTTED IN PAVEMENT) WHITE	51
202.9952	REMOVE, STOCKPILE, HANDLE, HAUL, AND DISPOSE CONTAMINATED SOIL	51
999.9901	PAY ADJUSTMENTS	51

Distribution of Quantities

Project Name - Bridge Group 16A - FOS, GLO, PVD, SCI, SMI

Estimate Name - Addendum 1

R.I. Contract No. - 2019-CB-048

FAP Nos: BRO-0606(001), BRO-PRES(006)

Item No.	Item Code	Description	UM	Qty.	Pay Code	Seq. No.
015	202.0201	Cont.		90.00		
		Item 202.0201 Total:		90.00		
016	202.0500	CHANNEL EXCAVATION EARTH	CY			
		REPAIR BRIDGES				
		BRIDGE 039001		15.00	0014	02
		Item 202.0500 Total:		15.00		
017	202.9951	REMOVE, STOCKPILE, HANDLE, HAUL, AND DISPOSE CONTAMINATED SOIL GLENBRIDGE AVENUE BRIDGE	TON			
					0011	01
		Item 202.9951 Total:			**DELETED**	
018	203.0100	STRUCTURAL EXCAVATION EARTH	CY			
		GLENBRIDGE AVENUE				
		BRIDGE 060601		790.00	0011	01
		REPAIR BRIDGES				
		BRIDGE 078201		10.00	0014	02
		Item 203.0100 Total:		800.00		
019	203.0650	CRUSHED STONE FILL UNDER STRUCTURES	CY			
		GLENBRIDGE AVENUE				
		BRIDGE 060601		27.00	0011	01
		REPAIR BRIDGES				
		BRIDGE 078201		2.00	0014	02
		ROUTE 6				
		CENTER MEDIAN		190.00	0011	01
		Item 203.0650 Total:		219.00		
020	203.0700	PERVIOUS FILL	CY			
		GLENBRIDGE AVENUE				
		BRIDGE 060601		130.00	0011	01
		REPAIR BRIDGES				

Distribution of Quantities

Project Name - Bridge Group 16A - FOS, GLO, PVD, SCI, SMI

Estimate Name - Addendum 1

R.I. Contract No. - 2019-CB-048

FAP Nos: BRO-0606(001), BRO-PRES(006)

Item No.	Item Code	Description	UM	Qty.	Pay Code	Seq. No.
180	T20.9901	REFLECTORIZED RECESSED PAVEMENT MARKER (SLOTTED IN PAVEMENT) WHITE ROUTE 6	EACH			
		438+78 R- 458+00 R		50.00	0011	01
		443+40 L- 458+00 L		38.00	0011	01
Item T20.9901 Total:				88.00		
181	202.9952	REMOVE, STOCKPILE, HANDLE, HAUL, AND DISPOSE CONTAMINATED SOIL GLENBRIDGE AVe BRIDGE	EACH			
Item 202.9952 Total:				100,000.00		
182	999.9901	PAY ADJUSTMENTS GLENBRIDGE GLENBRIDGE REPAIR BRIDGES REPAIR BRIDGES	EACH			
Item 999.9901 Total:				50,000.00		

"General Decision Number: RI20190001 07/12/2019

Superseded General Decision Number: RI20180001

State: Rhode Island

Construction Types: Building, Heavy (Heavy and Marine) and Highway

Counties: Rhode Island Statewide.

BUILDING CONSTRUCTION PROJECTS (does not include residential construction consisting of single family homes and apartments up to and including 4 stories) HEAVY, HIGHWAY AND MARINE CONSTRUCTION PROJECTS

Note: Under Executive Order (EO) 13658, an hourly minimum wage of \$10.60 for calendar year 2019 applies to all contracts subject to the Davis-Bacon Act for which the contract is awarded (and any solicitation was issued) on or after January 1, 2015. If this contract is covered by the EO, the contractor must pay all workers in any classification listed on this wage determination at least \$10.60 per hour (or the applicable wage rate listed on this wage determination, if it is higher) for all hours spent performing on the contract in calendar year 2019. If this contract is covered by the EO and a classification considered necessary for performance of work on the contract does not appear on this wage determination, the contractor must pay workers in that classification at least the wage rate determined through the conformance process set forth in 29 CFR 5.5(a)(1)(ii) (or the EO minimum wage rate, if it is higher than the conformed wage rate). The EO minimum wage rate will be adjusted annually. Please note that this EO applies to the above-mentioned types of contracts entered into by the

federal government that are subject to the Davis-Bacon Act itself, but it does not apply to contracts subject only to the Davis-Bacon Related Acts, including those set forth at 29 CFR 5.1(a)(2)-(60). Additional information on contractor requirements and worker protections under the EO is available at www.dol.gov/whd/govcontracts.

Modification Number	Publication Date
0	01/04/2019
1	01/11/2019
2	04/05/2019
3	05/03/2019
4	05/24/2019
5	06/07/2019
6	06/14/2019
7	06/21/2019
8	06/28/2019
9	07/12/2019

ASBE0006-006 06/01/2015

	Rates	Fringes
HAZARDOUS MATERIAL HANDLER (Includes preparation, wetting, stripping, removal scrapping, vacuuming, bagging & disposing of all insulation materials, whether they contain asbestos or not, from mechanical systems).....	\$ 31.63	18.30

ASBE0006-008 09/01/2018

	Rates	Fringes
Asbestos Worker/Insulator Includes application of		

Addendum No. 1

all insulating materials,
 protective coverings,
 coatings & finishes to all
 types of mechanical systems.\$ 42.38 28.75

 BOIL0029-001 01/01/2017

	Rates	Fringes
BOILERMAKER.....	\$ 42.42	24.92

 BRRIO003-001 06/01/2019

	Rates	Fringes
Bricklayer, Stonemason, Pointer, Caulker & Cleaner.....	\$ 40.48	27.52

 BRRIO003-002 03/01/2019

	Rates	Fringes
Marble Setter, Terrazzo Worker & Tile Setter.....	\$ 39.26	27.92

 BRRIO003-003 03/01/2019

	Rates	Fringes
Marble, Tile & Terrazzo Finisher.....	\$ 33.00	26.73

 CARP0094-001 01/01/2019

	Rates	Fringes
CARPENTER (Includes Soft Floor Layer).....	\$ 37.13	28.45
Diver Tender.....	\$ 36.28	27.15

Addendum No. 1

DIVER.....	\$ 47.08	27.15
Piledriver.....	\$ 37.13	28.45
WELDER.....	\$ 38.13	28.45

FOOTNOTES:

When not diving or tending the diver, the diver and diver tender shall receive the piledriver rate. Diver tenders shall receive \$1.00 per hour above the pile driver rate when tending the diver.

Work on free-standing stacks, concrete silos & public utility electrical power houses, which are over 35 ft. in height when constructed: \$.50 per hour additional.

Work on exterior concrete shear wall gang forms, 45 ft. or more above ground elevation or on setback: \$.50 per hour additional.

The designated piledriver, known as the "monkey": \$1.00 per hour additional.

 CARP1121-002 10/01/2017

	Rates	Fringes
MILLWRIGHT.....	\$ 36.85	27.50

 ELEC0099-002 06/01/2019

	Rates	Fringes
ELECTRICIAN.....	\$ 40.40	57.24%
Teledata System Installer.....	\$ 30.30	13.10%+14.53

FOOTNOTES:

Work of a hazardous nature, or where the work height is 30

Addendum No. 1

ft. or more from the floor, except when working
OSHA-approved lifts: 20% per hour additional.

Work in tunnels below ground level in combined sewer outfall:
20% per hour additional.

ELEV0039-001 01/01/2019

	Rates	Fringes
ELEVATOR MECHANIC.....	\$ 51.56	33.705+A+B

FOOTNOTES:

A. PAID HOLIDAYS: New Years Day; Memorial Day; Independence Day; Labor Day; Veterans' Day; Thanksgiving Day; the Friday after Thanksgiving Day; and Christmas Day.

B. Employer contributes 8% basic hourly rate for 5 years or more of service of 6% basic hourly rate for 6 months to 5 years of service as vacation pay credit.

ENGI0057-001 06/01/2019

	Rates	Fringes
Operating Engineer: (power plants, sewer treatment plants, pumping stations, tunnels, caissons, piers, docks, bridges, wind turbines, subterranean & other marine and heavy construction work)		
GROUP 1.....	\$ 41.30	25.95+a
GROUP 2.....	\$ 39.80	25.95+a
GROUP 3.....	\$ 35.42	25.95+a

Addendum No. 1

GROUP 4.....	\$ 32.57	25.95+a
GROUP 5.....	\$ 38.85	25.95+a
GROUP 6.....	\$ 29.65	25.95+a
GROUP 7.....	\$ 23.65	25.95+a
GROUP 8.....	\$ 35.50	25.95+a
GROUP 9.....	\$ 39.42	25.95+a

a. BOOM LENGTHS, INCLUDING JIBS:

- 150 feet and over + \$ 2.00
- 180 feet and over + \$ 3.00
- 210 feet and over + \$ 4.00
- 240 feet and over + \$ 5.00
- 270 feet and over + \$ 7.00
- 300 feet and over + \$ 8.00
- 350 feet and over + \$ 9.00
- 400 feet and over + \$10.00

a. PAID HOLIDAYS:

New Year's Day, President's Day, Memorial Day, July Fourth, Victory Day, Labor Day, Columbus Day, Veterans Day, Thanksgiving Day, Christmas Day. a: Any employee who works 3 days in the week in which a holiday falls shall be paid for the holiday.

a. FOOTNOTES:

- Hazmat work: \$2.00 per hour additional.
- Tunnel/Shaft work: \$5.00 per hour additional.

POWER EQUIPMENT OPERATORS CLASSIFICATIONS

GROUP 1: Cranes, lighters, boom trucks and derricks

GROUP 2: Digging machine, Ross Carrier, locomotive, hoist, elevator, bidwell-type machine, shot & water blasting machine, paver, spreader, graders, front end loader (3 yds. and over), vibratory hammer & vacuum truck, roadheaders, forklifts, economobile type equipment, tunnel boring

Addendum No. 1

machines, concrete pump and on site concrete plants.

GROUP 3: Oilers on cranes.

GROUP 4: Oiler on crawler backhoe.

GROUP 5: Bulldozer, bobcats, skid steer loader, tractor, scraper, combination loader backhoe, roller, front end loader (less than 3 yds.), street and mobile-powered sweeper (3-yd. capacity), 8-ft. sweeper minimum 65 HP).

GROUP 6: Well-point installation crew.

GROUP 7: Utility Engineers and Signal Persons

GROUP 8: Heater, concrete mixer, stone crusher, welding machine, generator and light plant, gas and electric driven pump and air compressor.

GROUP 9: Boat & tug operator.

ENGI0057-002 05/01/2019

Rates Fringes

Power Equipment Operator
(highway construction projects; water and sewerline projects which are incidental to highway construction projects; and bridge projects that do not span water)

GROUP 1.....	\$ 34.95	25.95+a
GROUP 2.....	\$ 29.65	25.95+a
GROUP 3.....	\$ 23.65	25.95+a
GROUP 4.....	\$ 30.23	25.95+a
GROUP 5.....	\$ 33.93	25.95+a
GROUP 6.....	\$ 33.55	25.95+a

Addendum No. 1

GROUP 7.....	\$ 29.20	25.95+a
GROUP 8.....	\$ 30.58	25.95+a
GROUP 9.....	\$ 32.53	25.95+a

a. FOOTNOTE: a. Any employee who works three days in the week in which a holiday falls shall be paid for the holiday.

a. PAID HOLIDAYS: New Year's Day, President's Day, Memorial Day, July Fourth, Victory Day, Labor Day, Columbus Day, Veterans Day, Thanksgiving Day & Christmas Day.

POWER EQUIPMENT OPERATOR CLASSIFICATIONS

GROUP 1: Digging machine, crane, piledriver, lighter, locomotive, derrick, hoist, boom truck, John Henry's, directional drilling machine, cold planer, reclaimer, paver, spreader, grader, front end loader (3 yds. and over), vacuum truck, test boring machine operator, veemere saw, water blaster, hydro-demolition robot, forklift, economobile, Ross Carrier, concrete pump operator and boats

GROUP 2: Well point installation crew

GROUP 3: Utility engineers and signal persons

GROUP 4: Oiler on cranes

GROUP 5: Combination loader backhoe, front end loader (less than 3 yds.), forklift, bulldozers & scrapers and boats

GROUP 6: Roller, skid steer loaders, street sweeper

GROUP 7: Gas and electric drive heater, concrete mixer, light plant, welding machine, pump & compressor

GROUP 8: Stone crusher

GROUP 9: Mechanic & welder

BUILDING CONSTRUCTION

	Rates	Fringes
Power Equipment Operator		
GROUP 1.....	\$ 40.57	25.95+a
GROUP 2.....	\$ 39.07	25.95+a
GROUP 3.....	\$ 38.85	25.95+a
GROUP 4.....	\$ 34.85	25.95+a
GROUP 5.....	\$ 32.00	25.95+a
GROUP 6.....	\$ 38.15	25.95+a
GROUP 7.....	\$ 37.72	25.95+a
GROUP 8.....	\$ 35.04	25.95+a

a. BOOM LENGTHS, INCLUDING JIBS:

- 150 ft. and over: + \$ 2.00
- 180 ft. and over: + \$ 3.00
- 210 ft. and over: + \$ 4.00
- 240 ft. and over: + \$ 5.00
- 270 ft. and over: + \$ 7.00
- 300 ft. and over: + \$ 8.00
- 350 ft. and over: + \$ 9.00
- 400 ft. and over: + \$10.00

a. PAID HOLIDAYS: New Year's Day, President's Day, Memorial Day, July Fourth, Victory Day, Labor Day, Columbus Day, Veterans Day, Thanksgiving Day & Christmas Day. a: Any employee who works 3 days in the week in which a holiday falls shall be paid for the holiday.

- a. FOOTNOTE: Hazmat work: \$2.00 per hour additional.
Tunnel/Shaft work: \$5.00 per hour additional.

POWER EQUIPMENT OPERATORS CLASSIFICATIONS

Addendum No. 1

GROUP 1: Cranes, lighters, boom trucks and derricks.

GROUP 2: Digging machine, Ross carrier, locomotive, hoist, elevator, bidwell-type machine, shot & water blasting machine, paver, spreader, front end loader (3 yds. and over), vibratory hammer and vacuum truck

GROUP 3: Telehandler equipment, forklift, concrete pump & on-site concrete plant

GROUP 4: Fireman & oiler

GROUP 5: Oiler on crawler backhoe

GROUP 6: Bulldozer, skid steer loaders, bobcats, tractor, grader, scraper, combination loader backhoe, roller, front end loader (less than 3 yds.), street and mobile powered sweeper (3 yds. capacity), 8-ft. sweeper (minimum 65 hp)

GROUP 7: Well point installation crew

GROUP 8: Heater, concrete mixer, stone crusher, welding machine, generator for light plant, gas and electric driven pump & air compressor

IRON0037-001 09/16/2017

	Rates	Fringes
IRONWORKER.....	\$ 34.89	26.87

LABO0271-001 06/05/2016

BUILDING CONSTRUCTION

	Rates	Fringes
--	-------	---------

LABORER

GROUP 1.....	\$ 29.20	23.80
GROUP 2.....	\$ 29.45	23.80
GROUP 3.....	\$ 29.95	23.80
GROUP 4.....	\$ 30.20	23.80
GROUP 5.....	\$ 31.20	23.80

LABORERS CLASSIFICATIONS

GROUP 1: Laborer, Carpenter Tender, Mason Tender, Cement Finisher Tender, Scaffold Erector, Wrecking Laborer, Asbestos Removal [Non-Mechanical Systems]

GROUP 2: Asphalt Raker, Adzemen, Pipe Trench Bracer, Demolition Burner, Chain Saw Operator, Fence & Guard Rail Erector, Setter of Metal Forms for Roadways, Mortar Mixer, Pipelayer, Riprap & Dry Stonewall Builder, Highway Stone Spreader, Pneumatic Tool Operator, Wagon Drill Operator, Tree Trimmer, Barco-Type Jumping Tamper, Mechanical Grinder Operator

GROUP 3: Pre-Cast Floor & Roof Plank Erectors

GROUP 4: Air Track Operator, Hydraulic & Similar Self-Powered Drill, Block Paver, Rammer, Curb Setter, Powderman & Blaster

GROUP 5: Toxic Waste Remover

LABO0271-002 06/05/2016

HEAVY AND HIGHWAY CONSTRUCTION

Rates Fringes

LABORER

COMPRESSED AIR

Group 1.....	\$ 46.63	21.80
Group 2.....	\$ 36.15	21.80

Addendum No. 1

Group 3.....	\$ 48.63	21.80
FREE AIR		
Group 1.....	\$ 38.70	21.80
Group 2.....	\$ 36.15	21.80
Group 3.....	\$ 40.70	21.80
LABORER		
Group 1.....	\$ 29.20	21.80
Group 2.....	\$ 29.45	21.80
Group 3.....	\$ 30.20	21.80
Group 4.....	\$ 22.70	21.80
Group 5.....	\$ 31.20	21.80
OPEN AIR CAISSON, UNDERPINNING WORK AND BORING CREW		
Bottom Man.....	\$ 35.20	21.80
Top Man & Laborer.....	\$ 34.25	21.80
TEST BORING		
Driller.....	\$ 35.65	21.80
Laborer.....	\$ 34.25	21.80

LABORER CLASSIFICATIONS

GROUP 1: Laborer; Carpenter tender; Cement finisher tender; Wrecking laborer; Asbestos removers [non-mechanical systems]; Plant laborer; Driller in quarries

GROUP 2: Adzeperson; Asphalt raker; Barcotype jumping tamper; Chain saw operators; Concrete and power buggy operator; Concrete saw operator; Demolition burner; Fence and guard rail erector; Highway stone spreader; Laser beam operator; Mechanical grinder operator; Mason tender; Mortar mixer; Pneumatic tool operator; Riprap and dry stonewall builder; Scaffold erector; Setter of metal forms for roadways; Wagon drill operator; Wood chipper operator; Pipelayer; Pipe trench bracer

GROUP 3: Air track drill operator; Hydraulic and similar powered drills; Brick paver; Block paver; Rammer and curb setter; Powderperson and blaster

Addendum No. 1

GROUP 4: Flagger & signaler

GROUP 5: Toxic waste remover

LABORER - COMPRESSED AIR CLASSIFICATIONS

GROUP 1: Mucking machine operator, tunnel laborer, brake person, track person, miner, grout person, lock tender, gauge tender, miner: motor person & all others in compressed air

GROUP 2: Change house attendant, powder watchperson, top person on iron

GROUP 3: Hazardous waste work within the "HOT" zone

LABORER - FREE AIR CLASSIFICATIONS

GROUP 1: Grout person - pumps, brake person, track person, form mover & stripper (wood & steel), shaft laborer, laborer topside, outside motorperson, miner, conveyor operator, miner welder, heading motorperson, erecting operator, mucking machine operator, nozzle person, rodperson, safety miner, shaft & tunnel, steel & rodperson, mole nipper, concrete worker, form erector (wood, steel and all accessories), cement finisher (this type of work only), top signal person, bottom person (when heading is 50' from shaft), burner, shield operator and TBM operator

GROUP 2: Change house attendant, powder watchperson

GROUP 3: Hazardous waste work within the "HOT" zone

PAIN0011-005 06/01/2019

Rates

Fringes

PAINTER

Brush and Roller.....	\$ 34.62	21.80
Epoxy, Tanks, Towers, Swing Stage & Structural Steel.....	\$ 36.62	21.80
Spray, Sand & Water Blasting.....	\$ 37.62	21.80
Taper.....	\$ 35.37	21.80
Wall Coverer.....	\$ 35.12	21.80

PAIN0011-006 06/01/2019

	Rates	Fringes
GLAZIER.....	\$ 38.18	21.80

FOOTNOTES:

SWING STAGE: \$1.00 per hour additional.

PAID HOLIDAYS: Labor Day & Christmas Day.

PAIN0011-011 06/01/2019

	Rates	Fringes
Painter (Bridge Work).....	\$ 51.00	21.80

PAIN0035-008 06/01/2011

	Rates	Fringes
Sign Painter.....	\$ 24.79	13.72

* PLAS0040-001 06/03/2019

BUILDING CONSTRUCTION

Addendum No. 1

	Rates	Fringes
CEMENT MASON/CONCRETE FINISHER...	\$ 36.00	27.15

FOOTNOTE: Cement Mason: Work on free swinging scaffolds under 3 planks width and which is 20 or more feet above ground and any offset structure: \$.30 per hour additional.

 * PLAS0040-002 07/01/2019

HEAVY AND HIGHWAY CONSTRUCTION

	Rates	Fringes
CEMENT MASON/CONCRETE FINISHER...	\$ 32.85	22.20

 * PLAS0040-003 07/01/2019

	Rates	Fringes
PLASTERER.....	\$ 37.55	27.50

 PLUM0051-002 09/01/2018

	Rates	Fringes
Plumbers and Pipefitters.....	\$ 42.04	29.45

 ROOF0033-004 06/01/2019

	Rates	Fringes
ROOFER.....	\$ 37.90	26.31

 SFRI0669-001 04/01/2017

	Rates	Fringes
--	-------	---------

SPRINKLER FITTER.....\$ 43.92 21.49

SHEE0017-002 12/01/2018

	Rates	Fringes
Sheet Metal Worker.....	\$ 36.13	35.13

TEAM0251-001 05/01/2019

HEAVY AND HIGHWAY CONSTRUCTION

	Rates	Fringes
TRUCK DRIVER		
GROUP 1.....	\$ 27.96	26.8525+A+B+C
GROUP 2.....	\$ 27.61	26.8525+A+B+C
GROUP 3.....	\$ 27.66	26.8525+A+B+C
GROUP 4.....	\$ 27.71	26.8525+A+B+C
GROUP 5.....	\$ 27.81	26.8525+A+B+C
GROUP 6.....	\$ 28.21	26.8525+A+B+C
GROUP 7.....	\$ 28.41	26.8525+A+B+C
GROUP 8.....	\$ 27.91	26.8525+A+B+C
GROUP 9.....	\$ 28.16	26.8525+A+B+C
GROUP 10.....	\$ 27.96	26.8525+A+B+C

FOOTNOTES:

A. Paid Holidays: New Year's Day, Memorial Day, Independence Day, Labor Day, Thanksgiving Day and Christmas Day, plus Presidents' Day, Columbus Day, Veteran's Day & V-J Day, providing the employee has worked at least one day in the calendar week in which the holiday falls.

B. Employee who has been on the payroll for 1 year or more but less than 5 years and has worked 150 Days during the last year of employment shall receive 1 week's paid vacation; 5 to 10 years - 2 weeks' paid vacation; 10 or

Addendum No. 1

more years - 3 week's paid vacation.

C. Employees on the seniority list shall be paid a one hundred dollar (\$100.00) bonus for every four hundred (400) hours worked, up to a maximum of five hundred dollars (\$500.00)

All drivers working on a defined hazard material job site shall be paid a premium of \$2.00 per hour over applicable rate.

TRUCK DRIVER CLASSIFICATIONS

GROUP 1: Pick-up trucks, station wagons, & panel trucks

GROUP 2: Two-axle on low beds

GROUP 3: Two-axle dump truck

GROUP 4: Three-axle dump truck

GROUP 5: Four- and five-axle equipment

GROUP 6: Low-bed or boom trailer.

GROUP 7: Trailers when used on a double hook up (pulling 2 trailers)

GROUP 8: Special earth-moving equipment, under 35 tons

GROUP 9: Special earth-moving equipment, 35 tons or over

GROUP 10: Tractor trailer

WELDERS - Receive rate prescribed for craft performing operation to which welding is incidental.

=====

Note: Executive Order (EO) 13706, Establishing Paid Sick Leave for Federal Contractors applies to all contracts subject to the Davis-Bacon Act for which the contract is awarded (and any solicitation was issued) on or after January 1, 2017. If this contract is covered by the EO, the contractor must provide employees with 1 hour of paid sick leave for every 30 hours they work, up to 56 hours of paid sick leave each year. Employees must be permitted to use paid sick leave for their own illness, injury or other health-related needs, including preventive care; to assist a family member (or person who is like family to the employee) who is ill, injured, or has other health-related needs, including preventive care; or for reasons resulting from, or to assist a family member (or person who is like family to the employee) who is a victim of, domestic violence, sexual assault, or stalking. Additional information on contractor requirements and worker protections under the EO is available at www.dol.gov/whd/govcontracts.

Unlisted classifications needed for work not included within the scope of the classifications listed may be added after award only as provided in the labor standards contract clauses (29CFR 5.5 (a) (1) (ii)).

The body of each wage determination lists the classification and wage rates that have been found to be prevailing for the cited type(s) of construction in the area covered by the wage determination. The classifications are listed in alphabetical order of "identifiers" that indicate whether the particular rate is a union rate (current union negotiated rate for local), a survey rate (weighted average rate) or a union average rate (weighted union average rate).

Union Rate Identifiers

Addendum No. 1

A four letter classification abbreviation identifier enclosed in dotted lines beginning with characters other than "SU" or "UAVG" denotes that the union classification and rate were prevailing for that classification in the survey. Example: PLUM0198-005 07/01/2014. PLUM is an abbreviation identifier of the union which prevailed in the survey for this classification, which in this example would be Plumbers. 0198 indicates the local union number or district council number where applicable, i.e., Plumbers Local 0198. The next number, 005 in the example, is an internal number used in processing the wage determination. 07/01/2014 is the effective date of the most current negotiated rate, which in this example is July 1, 2014.

Union prevailing wage rates are updated to reflect all rate changes in the collective bargaining agreement (CBA) governing this classification and rate.

Survey Rate Identifiers

Classifications listed under the "SU" identifier indicate that no one rate prevailed for this classification in the survey and the published rate is derived by computing a weighted average rate based on all the rates reported in the survey for that classification. As this weighted average rate includes all rates reported in the survey, it may include both union and non-union rates. Example: SULA2012-007 5/13/2014. SU indicates the rates are survey rates based on a weighted average calculation of rates and are not majority rates. LA indicates the State of Louisiana. 2012 is the year of survey on which these classifications and rates are based. The next number, 007 in the example, is an internal number used in producing the wage determination. 5/13/2014 indicates the survey completion date for the classifications and rates under that identifier.

Survey wage rates are not updated and remain in effect until a new survey is conducted.

Union Average Rate Identifiers

Classification(s) listed under the UAVG identifier indicate that no single majority rate prevailed for those classifications; however, 100% of the data reported for the classifications was union data. EXAMPLE: UAVG-OH-0010 08/29/2014. UAVG indicates that the rate is a weighted union average rate. OH indicates the state. The next number, 0010 in the example, is an internal number used in producing the wage determination. 08/29/2014 indicates the survey completion date for the classifications and rates under that identifier.

A UAVG rate will be updated once a year, usually in January of each year, to reflect a weighted average of the current negotiated/CBA rate of the union locals from which the rate is based.

WAGE DETERMINATION APPEALS PROCESS

1.) Has there been an initial decision in the matter? This can be:

- * an existing published wage determination
- * a survey underlying a wage determination
- * a Wage and Hour Division letter setting forth a position on a wage determination matter
- * a conformance (additional classification and rate) ruling

On survey related matters, initial contact, including requests for summaries of surveys, should be with the Wage and Hour Regional Office for the area in which the survey was conducted because those Regional Offices have responsibility for the Davis-Bacon survey program. If the response from this initial contact is not satisfactory, then the process described in 2.) and 3.) should be followed.

Addendum No. 1

With regard to any other matter not yet ripe for the formal process described here, initial contact should be with the Branch of Construction Wage Determinations. Write to:

Branch of Construction Wage Determinations
Wage and Hour Division
U.S. Department of Labor
200 Constitution Avenue, N.W.
Washington, DC 20210

2.) If the answer to the question in 1.) is yes, then an interested party (those affected by the action) can request review and reconsideration from the Wage and Hour Administrator (See 29 CFR Part 1.8 and 29 CFR Part 7). Write to:

Wage and Hour Administrator
U.S. Department of Labor
200 Constitution Avenue, N.W.
Washington, DC 20210

The request should be accompanied by a full statement of the interested party's position and by any information (wage payment data, project description, area practice material, etc.) that the requestor considers relevant to the issue.

3.) If the decision of the Administrator is not favorable, an interested party may appeal directly to the Administrative Review Board (formerly the Wage Appeals Board). Write to:

Administrative Review Board
U.S. Department of Labor
200 Constitution Avenue, N.W.
Washington, DC 20210

4.) All decisions by the Administrative Review Board are final.

=====

END OF GENERAL DECISION"