

June 11, 2019

STATE OF RHODE ISLAND AND PROVIDENCE PLANTATION
DEPARTMENT OF ADMINISTRATION

DIVISION OF PURCHASES BID No. 7598809

RHODE ISLAND DEPARTMENT OF TRANSPORTATION

RHODE ISLAND CONTRACT No. 2019-CB-061

FEDERAL-AID PROJECT NO. FAP No: BHO-018B(001)

Bridge Group 18B

EAST GREENWICH AND NORTH KINGSTOWN

KENT AND WASHINGTON COUNTIES

NOTICE TO PROSPECTIVE BIDDERS

ADDENDUM NO. 1 Prospective bidders and all concerned are hereby notified of the following changes in the Plans, Specifications, Proposal and Distribution of Quantities for this contract. These changes shall be incorporated in the Plans, Specifications, Proposal and Distribution of Quantities, and shall become an integral part of the Contract Documents.

A. Contract Dates

1. The Phase I Completion Date has been changed to August 12, 2020.
2. The Substantial Completion Date has been changed to December 3, 2020.

B. Clarifications

1. Plan Sheet 9 in the PDF on the Advertising CD is located out of order following Plan Sheet 3. The sheet order shall be considered in numerical sequence by the numbers listed in the top-right corner of each sheet.

C. General Provisions – Contract Specific

1. Replace page CS-5 with page CS-5(R-1) attached to this Addendum No. 1. The bridge-group date restrictions have been revised.
2. Replace Appendix C, Small Site Stormwater Pollution Prevention Plan, page 5 with page 5(R-1) attached to this Addendum No. 1. The estimated dates and durations have been revised.

D. Specifications – Job Specific

1. Replace pages JS-14 through JS-16 with pages JS-14(R-1) through JS-16(R-1) attached to this Addendum No. 1. Item 807.9903 “Supplemental Stones” has been added.
2. Replace page JS-33 with page JS-33(R-1) attached to this Addendum No. 1. The liquid asphalt and diesel fuel price adjustments have been updated.

E. Distribution of Quantities

1. Replace the Table of Contents with the Table of Contents (R-1) attached to this Addendum No. 1. The table has been updated.

2. Replace page 8 with page 8(R-1) attached to this Addendum No. 1. The Quantity for Item Code 808.1501 “Concrete Superstructure Class HP 3/4” Bridge Decks” has been deleted.
3. Replace page 15 with page 15(R-1) attached to this Addendum No. 1. The Quantities for Item Code 914.5010 “Flagpersons” and Item Code 914.5020 “Flagpersons – Overtime” have been changed to 1,912 and 192 MHRS, respectively.
4. Replace page 19 with page 19(R-1) attached to this Addendum No. 1. The Quantity for 929.0110 “Field Office” has been changed to 18 PMO.
5. Replace page 23 with page 23(R-1) attached to this Addendum No. 1. Item Code 807.9903 “Supplemental Stones” has been added.

F. Plans

1. Sheet 31 – Stony Lane Bridge No. 076801 Repair Plan No. 5

Delete Sheet 31 in its entirety and insert the revised Sheet 31 (R-1) attached to this Addendum No. 1. A note has been added to clarify the measurement and payment for the deck concrete removal and replacement.

G. Federal Wage Rates

1. Replace the Federal Wage Rates dated 05/24/2019 with the Federal Wage Rates dated 06/07/2019 attached to this Addendum No. 1.



RI Department of Transportation
Administrator, Division of Project Management

- **Group 1: April 16, 2020 – December 3, 2020**
- **Group 2: April 16, 2020 – August 12, 2020**
- **Group 3: August 13, 2020 – December 3, 2020**
- **Work on Group 3 shall not begin until work on Group 2 is complete.**

- F. The Contractor shall coordinate the proposed work schedule as stipulated in the permits for this project (see Section 20 and Appendix B, “Environmental Permits” of these General Provisions – Contract Specific).
- G. During the pavement removal operations, no over breakage into the operational travel lanes will be allowed.
- H. The Contractor shall maintain appropriate construction-related signing at all times. Any signs not appropriate for construction activity taking place at any given time shall be removed or covered to the satisfaction of the Engineer.
- I. Any deviations from the requirements stated here or detailed in the reference drawings, as well as any deviations from the approved construction work sequence and time schedule must be submitted to the Engineer in writing for approval.
- J. The Contractor shall plan the work such that at the end of each working day all the pavement removal and/or paving operation shall be squared off from one edge of pavement to the other edge of pavement.
- K. The Contractor shall exercise care when excavating on and near existing bridges to avoid damaging the structure to remain. The Contractor shall provide the Engineer with captioned photographs of any damage/defects to the structure prior to work beginning on bridge. All damage caused by the Contractor shall be repaired to the satisfaction of the Engineer at the Contractor’s expense.
- L. All erosion controls shall be in-place and accepted by the Engineer prior to beginning work.
- M. The Contractor shall provide temporary onsite concrete washout structures of adequate capacity in accordance with the Stormwater Pollution Prevention Plan included in the Contract Book. Actual location of concrete washout area shall be determined in the field and should be approved by the Engineer. This work shall be incidental to the concrete work and no additional payment will be made.

7. SPECIAL REQUIREMENTS FOR PAVEMENT MARKINGS

Waterborne longitudinal markings (including edge, center, lane, and gore-area lines and extensions), stop line markings, and lane use arrow markings shall be installed before the end of the work shift on all micro milled and newly installed pavement surface areas that will be opened to traffic at the end of the shift.

Temporary markings not listed above (including, but not limited to, words, yield lines and other symbols, crosswalk lines, and parking space lines) should only be installed on the final (top-surface) course of newly paved roadways.

1.2 Nature and Sequence of Construction Activity

- The construction will be sequenced according to the durations shown below. One crew will remain at Stony Lane for the entirety of the project. One crew will begin at Bleachery Bridge at the start date for group one shown below. One crew will begin work on Bridge Group 2. Once a crew completes the bridge work in full they will be permitted to move onto a new bridge and begin construction. Once Bridge Group 2 is completed the two crews can begin construction on the bridges in Bridge Group 3.

	Group 1	Group 2	Group 3
Estimated Project Start Date:	04/16/20	04/16/20	08/13/20
Estimated Project Completion Date:	12/03/20	08/12/20	12/03/20
Estimated Number of Months:	8	4	4

1.3 Construction Site Estimates

The following are estimates of the construction site:

Total Project Area	1.04 acres
Construction Site Area to be disturbed	0.005 acres
Percentage impervious area <u>before</u> construction	60 %
Percentage impervious area <u>after</u> construction	60 %

JOB SPECIFIC

**CODE 807.9901
RESET STONE MASONRY WALL**

**CODE 807.9902
POINTING AND GROUTING MASONRY ON HISTORIC BRIDGES**

**807.9903
SUPPLEMENTAL STONES**

DESCRIPTION:

The work under this item shall consist of resetting displaced wall stones, resetting chinking stones, supplying supplemental stones as needed, and pointing and grouting masonry, as needed, at Bleachery Bridge No. 4, Sandhill Bridge No. 8, Kenyon Avenue Bridge No. 1157, and Charles Eldredge Bridge No. 1158, to the limits shown on the plans and as directed by the Engineer.

All work shall be in accordance with Section 807 of Standard Specifications except as modified herein.

HISTORIC SIGNIFICANCE:

The Contractor shall be aware Bleachery Bridge No. 4 is a historically significant bridge that is eligible to be listed on the National Register of Historic Places. It is a 1940 single-span, concrete arch-deck bridge with randomly-coursed granite facing on the concrete spandrel walls and granite ashlar wing walls.

The Contractor shall also be aware that Sandhill Bridge No. 8 is a historically significant bridge that is eligible to be listed on the National Register of Historic Places. It is a small 1929 masonry and concrete arch-deck bridge with a low parapet of mortared rubble masonry and similar rubble approach walls.

The Contractor shall also be aware that Kenyon Avenue Bridge No. 1157 is a historically significant bridge that is eligible to be listed on the National Register of Historic Places. It is a 1930 simple concrete slab bridge with rubble masonry abutments.

The Contractor shall also be aware that Charles Eldredge Bridge No. 1158 is a historically significant bridge that is eligible to be listed on the National Register of Historic Places. Similar to Bridge No. 1157, it is a 1930 simple concrete slab bridge with rubble masonry abutments

Grit-blasting, including sand-blasting, harsh chemical cleaners or any cleaning process that might negatively affect the appearance of the stone shall at no time be used on the bridge's stonework or mortar.

MATERIALS:

The materials for this work shall be approved by the Engineer in consultation with the RIDOT Historic Preservation Specialist. Mortar/Grout for repointing joints shall be a cement-based grout from the RIDOT Approved Materials List that is suitable for use in pointing and grouting stone masonry. The mortar to be

used shall blend with the finish, color and composition of the existing mortar between the stones and approved by RIDOT.

CONSTRUCTION METHODS:

Pointing and grouting the stone masonry wall shall conform to the applicable provisions of Section 807 of the RIDOT Standard Specifications, except as modified by this specification and the material manufacturer's recommendations.

This work shall include pointing and grouting all required joints, resetting displaced wall stones, and resetting chinking stones on the existing stone masonry spandrel walls and wingwalls and as directed by the Engineer.

Supplemental wall stones, as required, and chinking stones shall match in color and texture to the existing wall materials. Any open joints that measure greater than 2" in width with a surface area greater than 8 square inches shall be filled with a chinking stone packed with mortar. Chinking stones shall be of the same color, texture and type as the adjacent stones and of appropriate shape and size to allow for a tight fit within the joint. Existing wall stones on site that are suitable for reuse may be used prior to using matching materials.

Joints to be pointed shall be cleaned of all loose or unsound mortar, dirt, vegetation or other foreign materials. All loose mortar shall be raked out to a minimum depth of two inches. The Contractor shall take care to minimize the loss of existing (sound) mortar and to avoid damaging the surrounding stone blocks. Loose mortar shall be removed using hand tools only. A natural bristle or nylon brush or low pressure compressed air (40-60 psi) may be used. Low pressure water (maximum pressure 100 psi) may also be used, although care should be taken not to scour additional bedding mortar out of the joints. No power saws, power drills/hammers, or other power tools shall be used to remove existing mortar. Use of grit blasting or high-pressure water stream (above 100 psi) is also prohibited for use in removing existing mortar.

After cleaning the joints to the satisfaction of the Engineer, fast setting grout material shall be thoroughly packed to completely fill the entire depths of the voids and extend to the outer adjacent stone face to form a surface similar to that of the original joints.

Excess grout shall be cleaned from adjacent stone work. Use only natural bristle or nylon brushes and wood or plastic tools to remove excess mortar.

Protect the finished work from direct sun and rain until the face has cured and hardened. After mortar has been allowed to cure, clean exposed masonry surfaces using stiff nylon or natural bristle brushes and clean water sprayed at low pressure (maximum pressure 400 psi).

Grout shall be tinted to match the color and texture of the existing original mortar, subject to approval by the Engineer in consultation with the RIDOT Historic Preservation Specialist.

All masonry work shall be in strict conformance with the material Manufacturer's recommendations.

The Contractor shall prevent excess grout from falling into the water.

The requirements regarding weather limitations shall be adhered to as stipulated in Subsection 807.03.1 of the RIDOT Standard Specifications, except that no work shall be constructed when temperatures are expected to fall below 40 °F within 36 hours of placement or repair, unless written permission is granted from the Engineer. The Contractor shall submit for approval cold weather construction materials and methods and shall adhere to conditions set forth by the Engineer. The materials and work associated with weather limitations is considered incidental and shall be performed at no additional cost to the State.

Any special equipment required to perform the work under these specifications shall be considered incidental to this item. There will be no additional payment made or time extension allowed for these difficult work conditions.

QUALIFICATIONS:

The work shall be accomplished by stone masons with demonstrated proficiency in historic stone masonry construction/restoration practices. Documentation in the form of professional certifications and the locations (with photographs) of at least three (3) successfully completed stone masonry projects of similar type and scale must be presented to the Engineer no less than 30 days prior to the start of work. This documentation must be approved by the Engineer in consultation with the RIDOT Historic Preservation Specialist in order for the masonry contractor to be permitted to perform the work. The approved mason(s) are to complete the entire work item for which the approval was given.

METHOD OF MEASUREMENT:

“Reset Stone Masonry Wall” will be measured for payment as a “Lump Sum”.

“Pointing and Grouting Masonry on Historic Bridges” will be measured for payment by the number of Linear Feet actually installed in accordance with the Plans and/or as directed by the Engineer.

“Supplemental Stones” will be measured for payment per “Pound” of stone actually furnished in accordance with the Plans and/or as directed by the Engineer.

BASIS OF PAYMENT:

“Reset Stone Masonry Wall” will be paid for at the contract “Lump Sum” price as listed in the proposal. The price so stated shall constitute full and complete compensation for all labor, materials, tools, equipment, and all other incidentals necessary to finish the work, complete and accepted by the Engineer.

“Pointing and Grouting Masonry on Historic Bridges” will be paid for at the contract unit price per linear foot as listed in the proposal. The price so-stated constitutes full and complete compensation for all labor, materials, and equipment, and all incidentals required to finish the work, complete and accepted by the Engineer.

“Supplemental Stones” will be paid for at the contract unit price per “Pound” as listed in the Proposal. The price so stated shall constitute full and complete compensation for all labor, materials, tools, equipment, and all other incidentals required to complete the work as described in this Special Provisions and elsewhere in the Contract Documents, complete in place and accepted by the Engineer.

Remove **SECTION 938, PRICE ADJUSTMENTS**, pages 9-73 to 9-74 of the RI Standard Specifications for Rhode and Bridge Construction and page AC-247 of the Compilation of Approved Specifications, May 2016 in their entirety and replace them with the following.

JOB SPECIFIC

**CODE 938.1000
PRICE ADJUSTMENTS**

DESCRIPTION:

- a. **Liquid Asphalt Cement.** The Base Price of Liquid Asphalt Cement as required to implement **Subsection 938.03.1** of the Standard Specifications is \$547.50 per ton as of 06/03/2019.

“In the case of modified asphalt binder, this price adjustment provision shall only apply to the neat liquid asphalt component. This provision shall not apply to the modifier component, manufacture, storage, transportation of other associated costs.

- b. **Diesel Fuel.** The Base Price of Diesel Fuel as required to implement **Subsection 938.03.2** of the Standard Specifications is \$2.0081 per gallon as of 06/03/2019.
- c. **Steel.** The Base Price of Steel as required to implement **Subsection 938.03.3** of the Standard Specifications is as shown on the following sheet.

Table of Contents - Distribution of Quantities

Project Name - Bridge Group 18B - EGR, NKS

Estimate Name - Addendum #1

R.I. Contract No. - 2019-CB-061

FAP Nos: BHO-018B(001)

ItemCode	Description	Page
201.0301	CUTTING AND DISPOSING ISOLATED TREES AND STUMPS (4"- 24")	1
201.0302	CUTTING AND DISPOSING ISOLATED TREES AND STUMPS (24'' OR PLUS)	1
201.0409	REMOVE AND DISPOSE FLEXIBLE PAVEMENT	1
201.0415	REMOVE AND DISPOSE GUARDRAIL AND POST ALL TYPES	1
201.0419	REMOVE AND DISPOSE FENCE	1
201.9901	CLEARING	2
201.9905	VINE REMOVAL	2
201.9910	REMOVE AND DISPOSE CHANNEL DEBRIS BRIDGE NO. 000801	2
201.9911	REMOVE AND DISPOSE CHANNEL DEBRIS BRIDGE NO. 024701	2
201.9912	REMOVE AND DISPOSE CHANNEL DEBRIS BRIDGE NO. 115801	2
202.0100	EARTH EXCAVATION	3
202.0800	GRAVEL BORROW	3
203.0100	STRUCTURAL EXCAVATION EARTH	3
203.0650	CRUSHED STONE FILL UNDER STRUCTURES	3
203.0700	PERVIOUS FILL	3
203.9901	CONTROL OF WATER BRIDGE NO. 000401	3
203.9902	CONTROL OF WATER BRIDGE NO. 115701	4
204.0100	TRIMMING AND FINE GRADING	4
206.0301	COMPOST FILTER SOCK	4
209.9901	INLET SEDIMENT CONTROL DEVICE	4
212.2000	CLEANING AND MAINTENANCE OF EROSION CONTROLS	5
213.0100	PLACEMENT OF MILLINGS BENEATH GUARDRAIL	5
302.0100	GRAVEL BORROW SUBBASE COURSE	5
401.3004	CLASS 9.5 HMA FOR PAVED WATERWAYS	5
401.3100	MODIFIED CLASS 9.5 HMA	6
403.0300	ASPHALT EMULSION TACK COAT	6
704.0200	RECONSTRUCT MANHOLE/CORBEL CONES	6
708.9040	CLEANING AND FLUSHING PIPE ALL SIZES	6
708.9041	CLEANING CATCH BASINS ALL TYPES AND SIZES	6
711.0110	3'' PAVED WATERWAY CLASS I-1 STANDARD 8.4.0	7
803.0300	PARTIAL REMOVAL AND DISPOSAL OF EXISTING CONCRETE MASONRY	7
803.0500	TEMPORARY DECK UNDERSIDE AND SIDE PROTECTIVE SHIELDING	7
807.0350	POINTING & GROUTING MASONRY	7
807.9901	RESET STONE MASONRY WALL	7
807.9902	POINTING AND GROUTING MASONRY ON HISTORIC BRIDGES	8
808.0120	CONCRETE SUBSTRUCTURE CLASS A 3/4'' TREMIE	8
808.0508	CONCRETE SUBSTRUCTURE CLASS XX 3/4'' APPROACH SLABS	8
808.0602	CONCRETE SUBSTRUCTURE CLASS HP 3/4'' BACKWALLS	8
808.1501	** ITEM DELETED **	8
808.1642	PREFORMED POLYETHYLENE FOAM JOINT FILLER 1''	9
810.0210	GALVANIZED BAR REINFORCEMENT GRADE 60	9
810.0702	WELDED WIRE FABRIC (GALVANIZED)	9
813.0200	PREFORMED WATERPROOFING MEMBRANE	9
817.2110	REPAIRS TO STRUCTURAL CONCRETE MASONRY (PATCHING MORTAR)	9
817.9901	HIGH STRENGTH GROUT	10
818.2010	PORTLAND CEMENT CONCRETE DECK REPAIRS (FULL DEPTH REMOVAL)	10
818.2020	PORTLAND CEMENT CONCRETE DECK REPAIRS (PARTIAL DEPTH REMOVAL)	10
819.0800	DRILL AND GROUT REINFORCING DOWELS	10
820.0110	CONCRETE SURFACE TREATMENT (PROTECTIVE COATING)	10
820.0200	HIGH PRESSURE WATER CLEANING OF CONCRETE SURFACES	11
820.0300	HIGH PRESSURE WATER CLEANING OF BRIDGE STRUCTURES	11
820.9902	GRAFFITI REMOVAL	11

Table of Contents - Distribution of Quantities

Project Name - Bridge Group 18B - EGR, NKS

Estimate Name - Addendum #1

R.I. Contract No. - 2019-CB-061

FAP Nos: BHO-018B(001)

ItemCode	Description	Page
821.1690	SAW & SEALING JOINTS IN BITUMINOUS CONCRETE PAVEMENT	11
822.1695	SILICONE HIGHWAY JOINT SEALER	11
823.1750	ASPHALTIC EXPANSION JOINT SYSTEM	11
824.9903	BEARING STIFFENER REPAIRS	12
824.9904	WEB PLATE REPAIRS	12
824.9905	INTERMEDIATE DIAPHRAGM REPAIR	12
825.8040	PAINTING EXISTING STRUCTURAL STEEL	12
832.8050	BRIDGE MINIMUM CLEARANCE SIGNS	12
836.0100	STRUCTURAL CONCRETE CRACK REPAIR BY EPOXY-RESIN BASE ADHESIVE INJECTION	12
837.0100	REPAIRS TO STRUCTURAL CONCRETE MASONRY WITH INTEGRALLY COLORED CONCRETE OR PATCHING MORTAR	13
839.0200	FULL DEPTH REMOVAL AND DISPOSAL OF BITUMINOUS PAVEMENT FROM CONCRETE BRIDGE DECKS	13
901.0163	GUARDRAIL STEEL BEAM POST IN LEDGE STANDARD 34.1.2	13
901.0191	GUARDRAIL STEEL BEAM ANCHORAGE TRAILING END SECTION STANDARD 34.3.4	13
901.0193	GUARDRAIL STEEL BEAM SINGLE FACE STANDARD 34.2.0	13
901.0199	GUARDRAIL END TREATMENT, ENERGY ABSORBING TERMINAL	14
903.0410	TEMPORARY CHAIN LINK FENCE	14
903.0411	TEMPORARY CHAIN LINK GATE	14
903.9901	BLACK VINYL CHAIN LINK FENCE 6' STD 31.2.0 MODIFIED	14
903.9902	BLACK VINYL DOUBLE GATE CHAIN LINK 6 FT STANDARD 31.2.0	14
910.9901	RUMBLE STRIPS	15
914.5010	FLAGPERSONS	15
914.5020	FLAGPERSONS - OVERTIME	15
916.0600	SHOCK ABSORBING BARRIER MODULES	15
916.0650	REMOVE, RELOCATE AND RESET SHOCK ABSORBING BARRIER MODULES	15
920.0200	FILTER FABRIC FOR RIP-RAP	15
920.9901	STONE RIPRAP ALL TYPES	16
920.9902	BEDDING FOR RIPRAP FS-3	16
922.0100	TEMPORARY CONSTRUCTION SIGNS STANDARD 29.1.0 AND 27.1.1	16
923.0105	DRUM BARRICADE STANDARD 26.2.0	18
923.0120	PLASTIC PIPE BARRICADE STANDARD 26.3.0	18
923.0200	FLUORESCENT TRAFFIC CONES STANDARD 26.1.0	18
924.0113	ADVANCE WARNING ARROW PANEL	18
925.0112	PORTABLE CHANGEABLE MESSAGE SIGN	18
926.0121	UNANCHORED PRECAST CONCRETE BARRIER FOR TEMPORARY TRAFFIC CONTROL STANDARD 40.5.0	18
926.0140	REFLECTIVE DELINEATORS FOR TEMPORARY CONCRETE BARRIERS	19
928.9901	TRUCK MTD ATT. WITH TRUCK MTD FLASHING ARROW BOARD	19
929.0110	FIELD OFFICE	19
931.0110	CLEANING AND SWEEPING PAVEMENT	19
932.0100	CUTTING AND MATCHING ASPHALT	19
932.0200	FULL-DEPTH SAWCUT OF BITUMINOUS PAVEMENT	20
936.0100	MOBILIZATION AND DEMOBILIZATION	20
937.0200	MAINTENANCE AND MOVEMENT TRAFFIC PROTECTION	20
999.9901	PAY ADJUSTMENTS TO THE GROUP 18B	20
999.9902	GENERAL REPAIRS	20
L01.0104	PLANTABLE SOIL 4 INCHES DEEP	20
L02.0101	GENERAL HIGHWAY SEEDING (TYPE 1)	21
L10.0101	MECHANICAL TREE AND SHRUB ROOT PRUNING	21
T18.9901	GUARDRAIL END DELINEATOR-RED	21
T18.9902	GUARDRAIL END DELINEATOR- GREEN	21

Table of Contents - Distribution of Quantities

Project Name - Bridge Group 18B - EGR, NKS

Estimate Name - Addendum #1

R.I. Contract No. - 2019-CB-061

FAP Nos: BHO-018B(001)

ItemCode	Description	Page
T20.0006	6 INCH WHITE FAST - DRYING WATERBORNE PAVEMENT MARKING PAINT	21
T20.0104	4 INCH YELLOW FAST - DRYING WATERBORNE PAVEMENT MARKING PAINT	22
T20.0106	6 INCH YELLOW FAST - DRYING WATERBORNE PAVEMENT MARKING PAINT	22
T20.1106	6 INCH TEMPORARY WATERBORNE PAINT PAVEMENT MARKINGS WHITE	22
T20.1206	6 INCH TEMPORARY WATERBORNE PAINT PAVEMENT MARKINGS YELLOW	22
T20.2006	6 INCH EPOXY RESIN PAVEMENT MARKINGS WHITE	22
T20.2014	4 INCH EPOXY RESIN PAVEMENT MARKINGS YELLOW	22
T20.2016	6 INCH EPOXY RESIN PAVEMENT MARKINGS YELLOW	23
T20.9901	BLACK EPOXY RESIN PAVEMENT MARKINGS	23
807.9903	SUPPLEMENTAL STONES	23

Distribution of Quantities

Project Name - Bridge Group 18B - EGR, NKS

Estimate Name - Addendum #1

R.I. Contract No. - 2019-CB-061

FAP Nos: BHO-018B(001)

Item No.	Item Code	Description	UM	Qty.	Pay Code	Seq. No.
035	807.9902	POINTING AND GROUTING MASONRY ON	LF			
		HISTORIC BRIDGES				
		BRIDGE NO.				
		000401		2,130.00	0014	02
		000801		360.00	0014	02
		115701		240.00	0014	02
		115801		330.00	0014	02
		Item 807.9902 Total:		3,060.00		
036	808.0120	CONCRETE SUBSTRUCTURE CLASS A	CY			
		3/4'' TREMIE				
		BRIDGE NO.				
		000901		2.00	0014	02
		Item 808.0120 Total:		2.00		
037	808.0508	CONCRETE SUBSTRUCTURE CLASS XX	CY			
		3/4'' APPROACH SLABS				
		BRIDGE NO.				
		076801		42.00	0014	02
		Item 808.0508 Total:		42.00		
038	808.0602	CONCRETE SUBSTRUCTURE CLASS HP	CY			
		3/4'' BACKWALLS				
		BRIDGE NO.				
		076801		23.00	0014	02
		Item 808.0602 Total:		23.00		
039	808.1501	CONCRETE SUPERSTRUCTURE CLASS HP	CY			
		3/4'' BRIDGE DECKS				
		BRIDGE NO.				
		076801			0014	02
		099201			0014	02
		Item 808.1501 Total:		**DELETED**		

Distribution of Quantities

Project Name - Bridge Group 18B - EGR, NKS
 Estimate Name - Addendum #1
 R.I. Contract No. - 2019-CB-061
 FAP Nos: BHO-018B(001)

Item No.	Item Code	Description	UM	Qty.	Pay Code	Seq. No.
071	903.9902	Cont. 6 FT STANDARD 31.2.0				
		BRIDGE NO.				
		001201		1.00	0014	02
Item 903.9902 Total:				1.00		
072	910.9901	RUMBLE STRIPS	LF			
		BRIDGE NO.				
		076801		720.00	0014	02
Item 910.9901 Total:				720.00		
073	914.5010	FLAGPERSONS	MHRS			
		PROJECT WIDE				
		PROJECT WIDE		1,912.00	0014	02
Item 914.5010 Total:				1,912.00		
074	914.5020	FLAGPERSONS - OVERTIME	MHRS			
		PROJECT WIDE				
		PROJECT WIDE		192.00	0014	02
Item 914.5020 Total:				192.00		
075	916.0600	SHOCK ABSORBING BARRIER MODULES	GRP			
		BRIDGE NO.				
		076801		1.00	0014	02
Item 916.0600 Total:				1.00		
076	916.0650	REMOVE, RELOCATE AND RESET SHOCK ABSORBING BARRIER MODULES	GRP			
		BRIDGE NO.				
		076801		5.00	0014	02
Item 916.0650 Total:				5.00		
077	920.0200	FILTER FABRIC FOR RIP-RAP	SY			
		BRIDGE NO.				

Distribution of Quantities

Project Name - Bridge Group 18B - EGR, NKS

Estimate Name - Addendum #1

R.I. Contract No. - 2019-CB-061

FAP Nos: BHO-018B(001)

Item No.	Item Code	Description	UM	Qty.	Pay Code	Seq. No.
086	926.0121 Cont.	BRIDGE NO. 076801		3,580.00	0014	02
Item 926.0121 Total:				3,580.00		
087	926.0140	REFLECTIVE DELINEATORS FOR TEMPORARY CONCRETE BARRIERS BRIDGE NO. 076801	EACH	37.00	0014	02
		SUPPL QTY		13.00	0014	02
Item 926.0140 Total:				50.00		
088	928.9901	TRUCK MTD ATT. WITH TRUCK MTD FLASHING ARROW BOARD PROJECT WIDE PROJECT WIDE	HRS	500.00	0014	02
Item 928.9901 Total:				500.00		
089	929.0110	FIELD OFFICE PROJECT WIDE PROJECT WIDE	PMO	18.00	0014	02
Item 929.0110 Total:				18.00		
090	931.0110	CLEANING AND SWEEPING PAVEMENT PROJECT WIDE PROJECT WIDE	HSY	150.00	0014	02
Item 931.0110 Total:				150.00		
091	932.0100	CUTTING AND MATCHING ASPHALT BRIDGE NO. 076801 106201	LF	160.00 60.00	0014 0014	02 02
Item 932.0100 Total:				220.00		

Distribution of Quantities

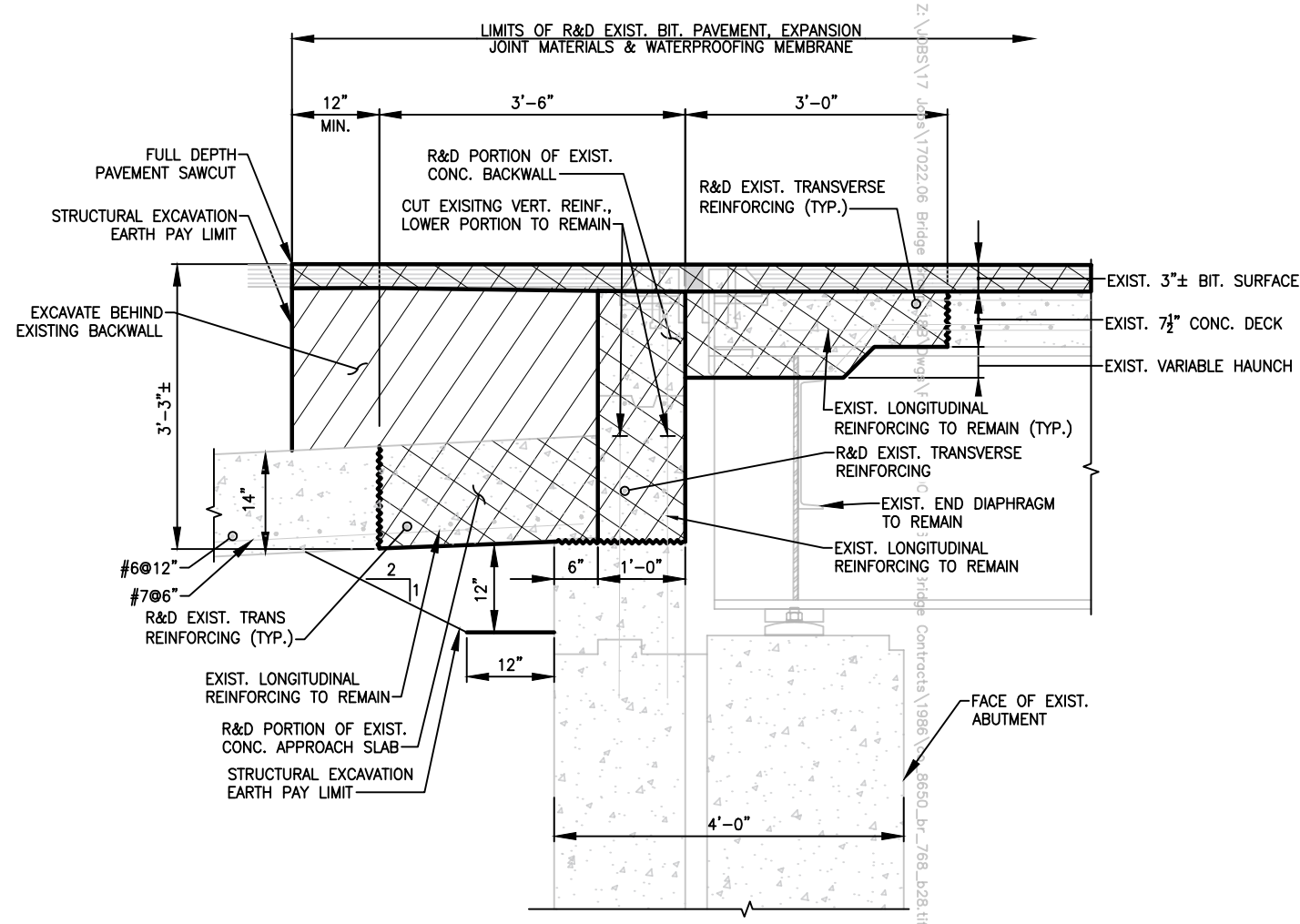
Project Name - Bridge Group 18B - EGR, NKS

Estimate Name - Addendum #1

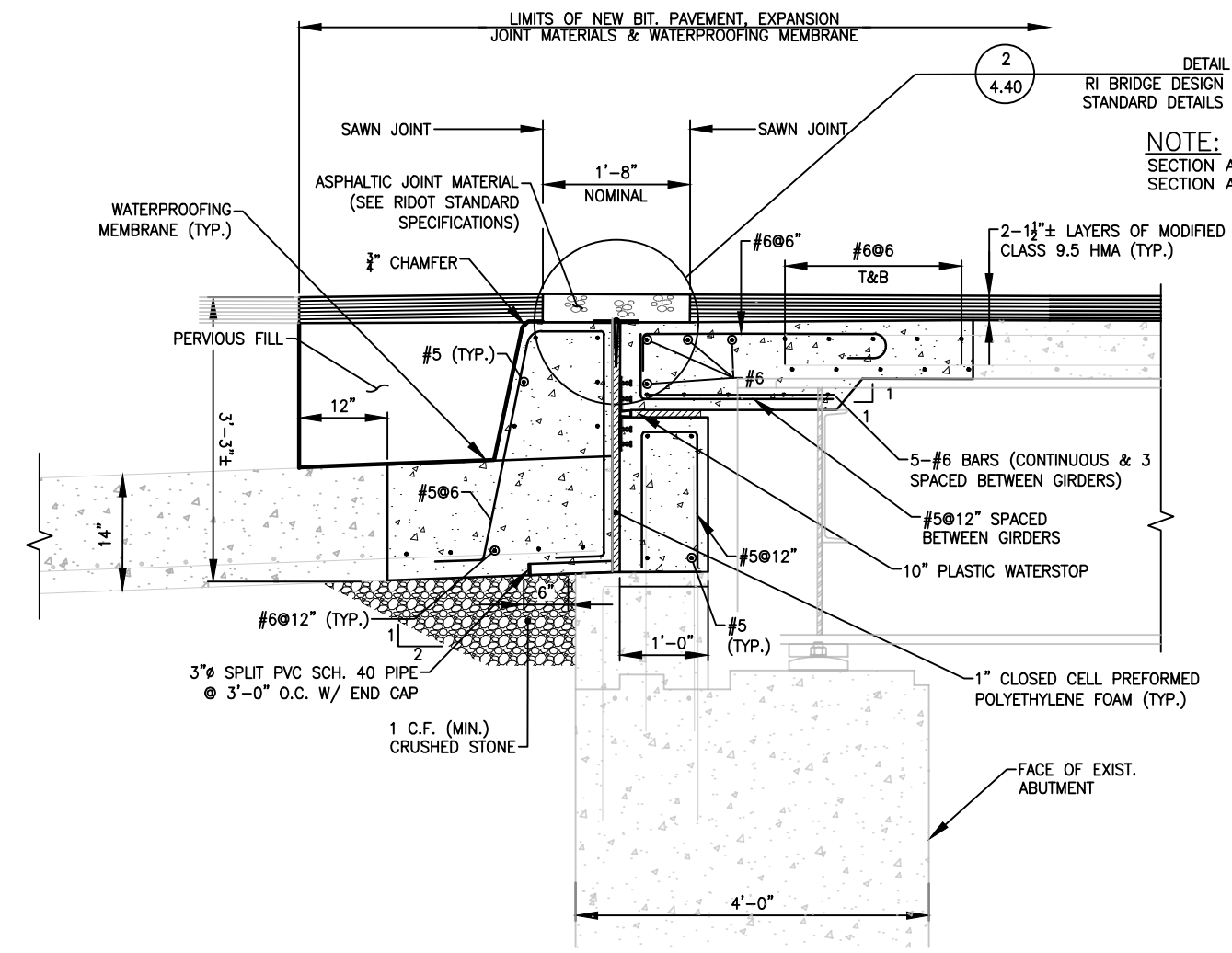
R.I. Contract No. - 2019-CB-061

FAP Nos: BHO-018B(001)

Item No.	Item Code	Description	UM	Qty.	Pay Code	Seq. No.
108	T20.2014 Cont.	MARKINGS YELLOW				
		BRIDGE NO.				
		099201		100.00	0014	02
				Item T20.2014 Total:		100.00
109	T20.2016	6 INCH EPOXY RESIN PAVEMENT	LF			
		MARKINGS YELLOW				
		BRIDGE NO.				
		076801		600.00	0014	02
				Item T20.2016 Total:		600.00
110	T20.9901	BLACK EPOXY RESIN PAVEMENT MARKINGS LF				
		BRIDGE NO.				
		076801		25,460.00	0014	02
				Item T20.9901 Total:		25,460.00
111	807.9903	SUPPLEMENTAL STONES	LBS			
		PROJECT WIDE				
		PROJECT WIDE		7,100.00	0014	02
				Item 807.9903 Total:		7,100.00



BACKWALL DEMOLITION SECTION A
SCALE: 1/2"=1'-0"



DECK OVER BACKWALL SECTION B
SCALE: 1/2"=1'-0"

NOTE:
SECTION AT EXPANSION JOINT SHOWN,
SECTION AT FIXED JOINT SIMILAR.

NOTES:

- REMOVAL AND PLACEMENT OF THE DECK CONCRETE WILL BE PAID FOR UNDER ITEM CODE 818.2010, "PORTLAND CEMENT CONCRETE DECK REPAIRS (FULL DEPTH REMOVAL)" AND SHALL BE IN ACCORDANCE WITH SECTION 818 OF THE STANDARD SPECIFICATIONS. MEASUREMENT OF THE DECK CONCRETE WILL BE MADE BASED ON THE PROPOSED DECK AREA AS SHOWN ON THESE PLANS.
- INSTALL ASPHALTIC BRIDGE JOINT ALONG SOUTH ABUTMENT AS SHOWN ON THESE PLANS AND/OR DIRECTED BY THE ENGINEER.
- INSTALL SAW AND SEAL JOINT ALONG NORTH ABUTMENT AS SHOWN ON THESE PLANS AND/OR DIRECTED BY THE ENGINEER.
- THE ITEM FOR 3"Ø SPLIT PVC SCH. 40 PIPE SHALL BE CONSIDERED INCIDENTAL TO THE BACKWALL REPAIR AND WILL NOT BE MEASURED SEPARATELY FOR PAYMENT.
- CLEAN EXISTING REINFORCEMENT TO REMAIN PER SSPC-SP-11 ("POWER TOOL CLEANED TO BARE METAL").
- THE CLOSED CELL PREFORMED POLYETHYLENE FOAM AND PLASTIC WATERSTOP ARE CONSIDERED INCIDENTAL TO, AND INCLUDED WITH PAYMENT FOR, THE BACKWALL CONCRETE ITEM AND WILL NOT BE MEASURED SEPARATELY FOR PAYMENT.

WEB PLATE SCHEDULE				
GIRDER	SOUTH ABUTMENT EAST FACE	SOUTH ABUTMENT WEST FACE	NORTH ABUTMENT EAST FACE	NORTH ABUTMENT WEST FACE
A	1/2"x12"x6"	N/A	N/A	N/A
F	N/A	N/A	N/A	1/2"x3'-0"x6"
BEARING STIFFENER SCHEDULE				
A	1/2"x6"	1/2"x6"	1/2"x6"	1/2"x6"
C	1/2"x6"	N/A	1/2"x6"	N/A
D	N/A	N/A	1/2"x6"	N/A
F	1/2"x6"	1/2"x6"	1/2"x6"	1/2"x6"
G	N/A	1/2"x6"	1/2"x6"	N/A
I	N/A	N/A	1/2"x6"	N/A
J	N/A	N/A	1/2"x6"	1/2"x6"
K	N/A	N/A	1/2"x6"	N/A
L	N/A	N/A	1/2"x6"	1/2"x6"



PARE CORPORATION
ENGINEERS - SCIENTISTS - PLANNERS
8 BLACKSTONE VALLEY PLACE
LINCOLN, RI 02865
401-334-4100

SCALE:		AS SHOWN
REVISIONS		
NO.	DATE	BY
1	06/11/2019	RCG

BRIDGE GROUP 18B

STONY LANE BRIDGE No. 076801
REPAIR PLAN No. 5

NORTH KINGSTOWN, RI

General Decision Number: RI190001 06/07/2019 RI1

Superseded General Decision Number: RI20180001

State: Rhode Island

Construction Types: Building, Heavy (Heavy and Marine) and Highway

Counties: Rhode Island Statewide.

BUILDING CONSTRUCTION PROJECTS (does not include residential construction consisting of single family homes and apartments up to and including 4 stories) HEAVY, HIGHWAY AND MARINE CONSTRUCTION PROJECTS

Note: Under Executive Order (EO) 13658, an hourly minimum wage of \$10.60 for calendar year 2019 applies to all contracts subject to the Davis-Bacon Act for which the contract is awarded (and any solicitation was issued) on or after January 1, 2015. If this contract is covered by the EO, the contractor must pay all workers in any classification listed on this wage determination at least \$10.60 per hour (or the applicable wage rate listed on this wage determination, if it is higher) for all hours spent performing on the contract in calendar year 2019. If this contract is covered by the EO and a classification considered necessary for performance of work on the contract does not appear on this wage determination, the contractor must pay workers in that classification at least the wage rate determined through the conformance process set forth in 29 CFR 5.5(a)(1)(ii) (or the EO minimum wage rate, if it is higher than the conformed wage rate). The EO minimum wage rate will be adjusted annually. Please note that this EO applies to the above-mentioned types of contracts entered into by the federal government that are subject to the Davis-Bacon Act itself, but it does not apply to contracts subject only to the Davis-Bacon Related Acts, including those set forth at 29 CFR 5.1(a)(2)-(60). Additional information on contractor requirements and worker protections under the EO is available at www.dol.gov/whd/govcontracts.

Modification Number	Publication Date
0	01/04/2019
1	01/11/2019
2	04/05/2019
3	05/03/2019
4	05/24/2019
5	06/07/2019

ASBE0006-006 06/01/2015

Rates Fringes

HAZARDOUS MATERIAL HANDLER
(Includes preparation, wetting, stripping, removal scrapping, vacuuming, bagging & disposing of all insulation materials, whether they contain asbestos or not, from mechanical systems).....\$ 31.63 18.30

ASBE0006-008 09/01/2018

	Rates	Fringes
Asbestos Worker/Insulator Includes application of all insulating materials, protective coverings, coatings & finishes to all types of mechanical systems.	\$ 42.38	28.75

BOIL0029-001 01/01/2017

	Rates	Fringes
BOILERMAKER.....	\$ 42.42	24.92

* BRRI0003-001 06/01/2019

	Rates	Fringes
Bricklayer, Stonemason, Pointer, Caulker & Cleaner.....	\$ 40.48	27.52

BRRI0003-002 03/01/2019

	Rates	Fringes
Marble Setter, Terrazzo Worker & Tile Setter.....	\$ 39.26	27.92

BRRI0003-003 03/01/2019

	Rates	Fringes
Marble, Tile & Terrazzo Finisher.....	\$ 33.00	26.73

CARP0094-001 01/01/2019

	Rates	Fringes
CARPENTER (Includes Soft Floor Layer).....	\$ 37.13	28.45
Diver Tender.....	\$ 36.28	27.15
DIVER.....	\$ 47.08	27.15
Piledriver.....	\$ 37.13	28.45
WELDER.....	\$ 38.13	28.45

FOOTNOTES:

When not diving or tending the diver, the diver and diver tender shall receive the piledriver rate. Diver tenders shall receive \$1.00 per hour above the pile driver rate when tending the diver.

Work on free-standing stacks, concrete silos & public utility electrical power houses, which are over 35 ft. in height when constructed: \$.50 per hour additional.

Work on exterior concrete shear wall gang forms, 45 ft. or more above ground elevation or on setback: \$.50 per hour additional.

The designated piledriver, known as the "monkey": \$1.00 per

hour additional.

CARP1121-002 10/01/2017

	Rates	Fringes
MILLWRIGHT.....	\$ 36.85	27.50

ELEC0099-002 06/01/2018

	Rates	Fringes
ELECTRICIAN.....	\$ 39.21	57.24%
Teledata System Installer.....	\$ 29.41	13.10%+14.15

FOOTNOTES:

Work of a hazardous nature, or where the work height is 30 ft. or more from the floor, except when working OSHA-approved lifts: 20% per hour additional.

Work in tunnels below ground level in combined sewer outfall: 20% per hour additional.

ELEV0039-001 01/01/2019

	Rates	Fringes
ELEVATOR MECHANIC.....	\$ 51.56	33.705+A+B

FOOTNOTES:

A. PAID HOLIDAYS: New Years Day; Memorial Day; Independence Day; Labor Day; Veterans' Day; Thanksgiving Day; the Friday after Thanksgiving Day; and Christmas Day.

B. Employer contributes 8% basic hourly rate for 5 years or more of service of 6% basic hourly rate for 6 months to 5 years of service as vacation pay credit.

* ENGI0057-001 06/01/2019

	Rates	Fringes
Operating Engineer: (power plants, sewer treatment plants, pumping stations, tunnels, caissons, piers, docks, bridges, wind turbines, subterranean & other marine and heavy construction work)		
GROUP 1.....	\$ 41.30	25.95+a
GROUP 2.....	\$ 39.80	25.95+a
GROUP 3.....	\$ 35.42	25.95+a
GROUP 4.....	\$ 32.57	25.95+a
GROUP 5.....	\$ 38.85	25.95+a
GROUP 6.....	\$ 29.65	25.95+a
GROUP 7.....	\$ 23.65	25.95+a
GROUP 8.....	\$ 35.50	25.95+a
GROUP 9.....	\$ 39.42	25.95+a

a. BOOM LENGTHS, INCLUDING JIBS:

- 150 feet and over + \$ 2.00
- 180 feet and over + \$ 3.00
- 210 feet and over + \$ 4.00
- 240 feet and over + \$ 5.00
- 270 feet and over + \$ 7.00
- 300 feet and over + \$ 8.00
- 350 feet and over + \$ 9.00
- 400 feet and over + \$10.00

a. PAID HOLIDAYS:

New Year's Day, President's Day, Memorial Day, July Fourth, Victory Day, Labor Day, Columbus Day, Veterans Day, Thanksgiving Day, Christmas Day. a: Any employee who works 3 days in the week in which a holiday falls shall be paid for the holiday.

a. FOOTNOTES:

Hazmat work: \$2.00 per hour additional.
Tunnel/Shaft work: \$5.00 per hour additional.

POWER EQUIPMENT OPERATORS CLASSIFICATIONS

GROUP 1: Cranes, lighters, boom trucks and derricks

GROUP 2: Digging machine, Ross Carrier, locomotive, hoist, elevator, bidwell-type machine, shot & water blasting machine, paver, spreader, graders, front end loader (3 yds. and over), vibratory hammer & vacuum truck, roadheaders, forklifts, economobile type equipment, tunnel boring machines, concrete pump and on site concrete plants.

GROUP 3: Oilers on cranes.

GROUP 4: Oiler on crawler backhoe.

GROUP 5: Bulldozer, bobcats, skid steer loader, tractor, scraper, combination loader backhoe, roller, front end loader (less than 3 yds.), street and mobile-powered sweeper (3-yd. capacity), 8-ft. sweeper minimum 65 HP).

GROUP 6: Well-point installation crew.

GROUP 7: Utility Engineers and Signal Persons

GROUP 8: Heater, concrete mixer, stone crusher, welding machine, generator and light plant, gas and electric driven pump and air compressor.

GROUP 9: Boat & tug operator.

ENGI0057-002 05/01/2019

Rates Fringes

Power Equipment Operator
(highway construction projects; water and sewerline projects which are incidental to highway construction projects; and bridge projects that do not span water)

GROUP 1.....	\$ 34.95	25.95+a
GROUP 2.....	\$ 29.65	25.95+a
GROUP 3.....	\$ 23.65	25.95+a
GROUP 4.....	\$ 30.23	25.95+a
GROUP 5.....	\$ 33.93	25.95+a
GROUP 6.....	\$ 33.55	25.95+a
GROUP 7.....	\$ 29.20	25.95+a
GROUP 8.....	\$ 30.58	25.95+a
GROUP 9.....	\$ 32.53	25.95+a

a. FOOTNOTE: a. Any employee who works three days in the week in which a holiday falls shall be paid for the holiday.

a. PAID HOLIDAYS: New Year's Day, President's Day, Memorial Day, July Fourth, Victory Day, Labor Day, Columbus Day, Veterans Day, Thanksgiving Day & Christmas Day.

POWER EQUIPMENT OPERATOR CLASSIFICATIONS

GROUP 1: Digging machine, crane, piledriver, lighter, locomotive, derrick, hoist, boom truck, John Henry's, directional drilling machine, cold planer, reclaimer, paver, spreader, grader, front end loader (3 yds. and over), vacuum truck, test boring machine operator, veemere saw, water blaster, hydro-demolition robot, forklift, economobile, Ross Carrier, concrete pump operator and boats

GROUP 2: Well point installation crew

GROUP 3: Utlity engineers and signal persons

GROUP 4: Oiler on cranes

GROUP 5: Combination loader backhoe, front end loader (less than 3 yds.), forklift, bulldozers & scrapers and boats

GROUP 6: Roller,skid steer loaders, street sweeper

GROUP 7: Gas and electric drive heater, concrete mixer, light plant, welding machine, pump & compressor

GROUP 8: Stone crusher

GROUP 9: Mechanic & welder

* ENGI0057-003 06/01/2019

BUILDING CONSTRUCTION

	Rates	Fringes
Power Equipment Operator		
GROUP 1.....	\$ 40.57	25.95+a
GROUP 2.....	\$ 39.07	25.95+a
GROUP 3.....	\$ 38.85	25.95+a
GROUP 4.....	\$ 34.85	25.95+a
GROUP 5.....	\$ 32.00	25.95+a
GROUP 6.....	\$ 38.15	25.95+a
GROUP 7.....	\$ 37.72	25.95+a
GROUP 8.....	\$ 35.04	25.95+a

a. BOOM LENTHS, INCLUDING JIBS:

150 ft. and over: + \$ 2.00

- 180 ft. and over: + \$ 3.00
- 210 ft. and over: + \$ 4.00
- 240 ft. and over: + \$ 5.00
- 270 ft. and over: + \$ 7.00
- 300 ft. and over: + \$ 8.00
- 350 ft. and over: + \$ 9.00
- 400 ft. and over: + \$10.00

a. PAID HOLIDAYS: New Year's Day, President's Day, Memorial Day, July Fourth, Victory Day, Labor Day, Columbus Day, Veterans Day, Thanksgiving Day & Christmas Day. a: Any employee who works 3 days in the week in which a holiday falls shall be paid for the holiday.

- a. FOOTNOTE: Hazmat work: \$2.00 per hour additional.
Tunnel/Shaft work: \$5.00 per hour additional.

POWER EQUIPMENT OPERATORS CLASSIFICATIONS

GROUP 1: Cranes, lighters, boom trucks and derricks.

GROUP 2: Digging machine, Ross carrier, locomotive, hoist, elevator, bidwell-type machine, shot & water blasting machine, paver, spreader, front end loader (3 yds. and over), vibratory hammer and vacuum truck

GROUP 3: Telehandler equipment, forklift, concrete pump & on-site concrete plant

GROUP 4: Fireman & oiler

GROUP 5: Oiler on crawler backhoe

GROUP 6: Bulldozer, skid steer loaders, bobcats, tractor, grader, scraper, combination loader backhoe, roller, front end loader (less than 3 yds.), street and mobile powered sweeper (3 yds. capacity), 8-ft. sweeper (minimum 65 hp)

GROUP 7: Well point installation crew

GROUP 8: Heater, concrete mixer, stone crusher, welding machine, generator for light plant, gas and electric driven pump & air compressor

IRON0037-001 09/16/2017

	Rates	Fringes
IRONWORKER.....	\$ 34.89	26.87

LABO0271-001 06/05/2016

BUILDING CONSTRUCTION

	Rates	Fringes
LABORER		
GROUP 1.....	\$ 29.20	23.80
GROUP 2.....	\$ 29.45	23.80
GROUP 3.....	\$ 29.95	23.80
GROUP 4.....	\$ 30.20	23.80
GROUP 5.....	\$ 31.20	23.80

LABORERS CLASSIFICATIONS

GROUP 1: Laborer, Carpenter Tender, Mason Tender, Cement Finisher Tender, Scaffold Erector, Wrecking Laborer, Asbestos Removal [Non-Mechanical Systems]

GROUP 2: Asphalt Raker, Adzemen, Pipe Trench Bracer, Demolition Burner, Chain Saw Operator, Fence & Guard Rail Erector, Setter of Metal Forms for Roadways, Mortar Mixer, Pipelayer, Riprap & Dry Stonewall Builder, Highway Stone Spreader, Pneumatic Tool Operator, Wagon Drill Operator, Tree Trimmer, Barco-Type Jumping Tamper, Mechanical Grinder Operator

GROUP 3: Pre-Cast Floor & Roof Plank Erectors

GROUP 4: Air Track Operator, Hydraulic & Similar Self-Powered Drill, Block Paver, Rammer, Curb Setter, Powderman & Blaster

GROUP 5: Toxic Waste Remover

LAB00271-002 06/05/2016

HEAVY AND HIGHWAY CONSTRUCTION

	Rates	Fringes
LABORER		
COMPRESSED AIR		
Group 1.....	\$ 46.63	21.80
Group 2.....	\$ 36.15	21.80
Group 3.....	\$ 48.63	21.80
FREE AIR		
Group 1.....	\$ 38.70	21.80
Group 2.....	\$ 36.15	21.80
Group 3.....	\$ 40.70	21.80
LABORER		
Group 1.....	\$ 29.20	21.80
Group 2.....	\$ 29.45	21.80
Group 3.....	\$ 30.20	21.80
Group 4.....	\$ 22.70	21.80
Group 5.....	\$ 31.20	21.80
OPEN AIR CAISSON, UNDERPINNING WORK AND BORING CREW		
Bottom Man.....	\$ 35.20	21.80
Top Man & Laborer.....	\$ 34.25	21.80
TEST BORING		
Driller.....	\$ 35.65	21.80
Laborer.....	\$ 34.25	21.80

LABORER CLASSIFICATIONS

GROUP 1: Laborer; Carpenter tender; Cement finisher tender; Wrecking laborer; Asbestos removers [non-mechanical systems]; Plant laborer; Driller in quarries

GROUP 2: Adzeperson; Asphalt raker; Barcotype jumping tamper; Chain saw operators; Concrete and power buggy operator; Concrete saw operator; Demolition burner; Fence and guard rail erector; Highway stone spreader; Laser beam operator; Mechanical grinder operator; Mason tender; Mortar mixer; Pneumatic tool operator; Riprap and dry stonewall builder; Scaffold erector; Setter of metal forms for

roadways; Wagon drill operator; Wood chipper operator; Pipelayer; Pipe trench bracer

GROUP 3: Air track drill operator; Hydraulic and similar powered drills; Brick paver; Block paver; Rammer and curb setter; Powderperson and blaster

GROUP 4: Flagger & signaler

GROUP 5: Toxic waste remover

LABORER - COMPRESSED AIR CLASSIFICATIONS

GROUP 1: Mucking machine operator, tunnel laborer, brake person, track person, miner, grout person, lock tender, gauge tender, miner: motor person & all others in compressed air

GROUP 2: Change house attendant, powder watchperson, top person on iron

GROUP 3: Hazardous waste work within the "HOT" zone

LABORER - FREE AIR CLASSIFICATIONS

GROUP 1: Grout person - pumps, brake person, track person, form mover & stripper (wood & steel), shaft laborer, laborer topside, outside motorperson, miner, conveyor operator, miner welder, heading motorperson, erecting operator, mucking machine operator, nozzle person, rodperson, safety miner, shaft & tunnel, steel & rodperson, mole nipper, concrete worker, form erector (wood, steel and all accessories), cement finisher (this type of work only), top signal person, bottom person (when heading is 50' from shaft), burner, shield operator and TBM operator

GROUP 2: Change house attendant, powder watchperson

GROUP 3: Hazardous waste work within the "HOT" zone

PAIN0011-005 06/01/2018

	Rates	Fringes
PAINTER		
Brush and Roller.....	\$ 33.62	21.05
Epoxy, Tanks, Towers, Swing Stage & Structural Steel.....	\$ 35.62	21.05
Spray, Sand & Water Blasting.....	\$ 36.62	21.05
Taper.....	\$ 34.37	21.05
Wall Coverer.....	\$ 34.12	21.05

PAIN0011-006 06/01/2018

	Rates	Fringes
GLAZIER.....	\$ 37.18	21.05

FOOTNOTES:

SWING STAGE: \$1.00 per hour additional.

PAID HOLIDAYS: Labor Day & Christmas Day.

PAIN0011-011 06/01/2018

	Rates	Fringes
Painter (Bridge Work).....	\$ 49.75	21.05

PAIN0035-008 06/01/2011

	Rates	Fringes
Sign Painter.....	\$ 24.79	13.72

PLAS0040-001 06/04/2018

BUILDING CONSTRUCTION

	Rates	Fringes
CEMENT MASON/CONCRETE FINISHER...	\$ 34.30	27.05

FOOTNOTE: Cement Mason: Work on free swinging scaffolds under 3 planks width and which is 20 or more feet above ground and any offset structure: \$.30 per hour additional.

PLAS0040-002 07/23/2018

HEAVY AND HIGHWAY CONSTRUCTION

	Rates	Fringes
CEMENT MASON/CONCRETE FINISHER...	\$ 31.20	22.10

PLAS0040-003 07/02/2018

	Rates	Fringes
PLASTERER.....	\$ 35.65	27.40

PLUM0051-002 09/01/2018

	Rates	Fringes
Plumbers and Pipefitters.....	\$ 42.04	29.45

ROOF0033-004 12/01/2018

	Rates	Fringes
ROOFER.....	\$ 36.75	26.12

SFRI0669-001 04/01/2017

	Rates	Fringes
SPRINKLER FITTER.....	\$ 43.92	21.49

SHEE0017-002 12/01/2018

	Rates	Fringes
--	-------	---------

Sheet Metal Worker.....\$ 36.13 35.13

TEAM0251-001 05/01/2019

HEAVY AND HIGHWAY CONSTRUCTION

Rates Fringes

TRUCK DRIVER

GROUP 1.....	\$ 27.96	26.8525+A+B+C
GROUP 2.....	\$ 27.61	26.8525+A+B+C
GROUP 3.....	\$ 27.66	26.8525+A+B+C
GROUP 4.....	\$ 27.71	26.8525+A+B+C
GROUP 5.....	\$ 27.81	26.8525+A+B+C
GROUP 6.....	\$ 28.21	26.8525+A+B+C
GROUP 7.....	\$ 28.41	26.8525+A+B+C
GROUP 8.....	\$ 27.91	26.8525+A+B+C
GROUP 9.....	\$ 28.16	26.8525+A+B+C
GROUP 10.....	\$ 27.96	26.8525+A+B+C

FOOTNOTES:

A. Paid Holidays: New Year's Day, Memorial Day, Independence Day, Labor Day, Thanksgiving Day and Christmas Day, plus Presidents' Day, Columbus Day, Veteran's Day & V-J Day, providing the employee has worked at least one day in the calendar week in which the holiday falls.

B. Employee who has been on the payroll for 1 year or more but less than 5 years and has worked 150 Days during the last year of employment shall receive 1 week's paid vacation; 5 to 10 years - 2 weeks' paid vacation; 10 or more years - 3 week's paid vacation.

C. Employees on the seniority list shall be paid a one hundred dollar (\$100.00) bonus for every four hundred (400) hours worked, up to a maximum of five hundred dollars (\$500.00)

All drivers working on a defined hazard material job site shall be paid a premium of \$2.00 per hour over applicable rate.

TRUCK DRIVER CLASSIFICATIONS

GROUP 1: Pick-up trucks, station wagons, & panel trucks

GROUP 2: Two-axle on low beds

GROUP 3: Two-axle dump truck

GROUP 4: Three-axle dump truck

GROUP 5: Four- and five-axle equipment

GROUP 6: Low-bed or boom trailer.

GROUP 7: Trailers when used on a double hook up (pulling 2 trailers)

GROUP 8: Special earth-moving equipment, under 35 tons

GROUP 9: Special earth-moving equipment, 35 tons or over

GROUP 10: Tractor trailer

 WELDERS - Receive rate prescribed for craft performing operation to which welding is incidental.

=====
 Note: Executive Order (EO) 13706, Establishing Paid Sick Leave for Federal Contractors applies to all contracts subject to the Davis-Bacon Act for which the contract is awarded (and any solicitation was issued) on or after January 1, 2017. If this contract is covered by the EO, the contractor must provide employees with 1 hour of paid sick leave for every 30 hours they work, up to 56 hours of paid sick leave each year. Employees must be permitted to use paid sick leave for their own illness, injury or other health-related needs, including preventive care; to assist a family member (or person who is like family to the employee) who is ill, injured, or has other health-related needs, including preventive care; or for reasons resulting from, or to assist a family member (or person who is like family to the employee) who is a victim of, domestic violence, sexual assault, or stalking. Additional information on contractor requirements and worker protections under the EO is available at www.dol.gov/whd/govcontracts.

Unlisted classifications needed for work not included within the scope of the classifications listed may be added after award only as provided in the labor standards contract clauses (29CFR 5.5 (a) (1) (ii)).

 The body of each wage determination lists the classification and wage rates that have been found to be prevailing for the cited type(s) of construction in the area covered by the wage determination. The classifications are listed in alphabetical order of "identifiers" that indicate whether the particular rate is a union rate (current union negotiated rate for local), a survey rate (weighted average rate) or a union average rate (weighted union average rate).

Union Rate Identifiers

A four letter classification abbreviation identifier enclosed in dotted lines beginning with characters other than "SU" or "UAVG" denotes that the union classification and rate were prevailing for that classification in the survey. Example: PLUM0198-005 07/01/2014. PLUM is an abbreviation identifier of the union which prevailed in the survey for this classification, which in this example would be Plumbers. 0198 indicates the local union number or district council number where applicable, i.e., Plumbers Local 0198. The next number, 005 in the example, is an internal number used in processing the wage determination. 07/01/2014 is the effective date of the most current negotiated rate, which in this example is July 1, 2014.

Union prevailing wage rates are updated to reflect all rate changes in the collective bargaining agreement (CBA) governing this classification and rate.

Survey Rate Identifiers

Classifications listed under the "SU" identifier indicate that no one rate prevailed for this classification in the survey and the published rate is derived by computing a weighted average rate based on all the rates reported in the survey for that classification. As this weighted average rate includes all rates reported in the survey, it may include both union and non-union rates. Example: SULA2012-007 5/13/2014. SU indicates the rates are survey rates based on a weighted average calculation of rates and are not majority rates. LA indicates the State of Louisiana. 2012 is the year of survey on which these classifications and rates are based. The next number, 007 in the example, is an internal number used in producing the wage determination. 5/13/2014 indicates the survey completion date for the classifications and rates under that identifier.

Survey wage rates are not updated and remain in effect until a new survey is conducted.

Union Average Rate Identifiers

Classification(s) listed under the UAVG identifier indicate that no single majority rate prevailed for those classifications; however, 100% of the data reported for the classifications was union data. EXAMPLE: UAVG-OH-0010 08/29/2014. UAVG indicates that the rate is a weighted union average rate. OH indicates the state. The next number, 0010 in the example, is an internal number used in producing the wage determination. 08/29/2014 indicates the survey completion date for the classifications and rates under that identifier.

A UAVG rate will be updated once a year, usually in January of each year, to reflect a weighted average of the current negotiated/CBA rate of the union locals from which the rate is based.

WAGE DETERMINATION APPEALS PROCESS

1.) Has there been an initial decision in the matter? This can be:

- * an existing published wage determination
- * a survey underlying a wage determination
- * a Wage and Hour Division letter setting forth a position on a wage determination matter
- * a conformance (additional classification and rate) ruling

On survey related matters, initial contact, including requests for summaries of surveys, should be with the Wage and Hour Regional Office for the area in which the survey was conducted because those Regional Offices have responsibility for the Davis-Bacon survey program. If the response from this initial contact is not satisfactory, then the process described in 2.) and 3.) should be followed.

With regard to any other matter not yet ripe for the formal process described here, initial contact should be with the Branch of Construction Wage Determinations. Write to:

Branch of Construction Wage Determinations
Wage and Hour Division

U.S. Department of Labor
200 Constitution Avenue, N.W.
Washington, DC 20210

2.) If the answer to the question in 1.) is yes, then an interested party (those affected by the action) can request review and reconsideration from the Wage and Hour Administrator (See 29 CFR Part 1.8 and 29 CFR Part 7). Write to:

Wage and Hour Administrator
U.S. Department of Labor
200 Constitution Avenue, N.W.
Washington, DC 20210

The request should be accompanied by a full statement of the interested party's position and by any information (wage payment data, project description, area practice material, etc.) that the requestor considers relevant to the issue.

3.) If the decision of the Administrator is not favorable, an interested party may appeal directly to the Administrative Review Board (formerly the Wage Appeals Board). Write to:

Administrative Review Board
U.S. Department of Labor
200 Constitution Avenue, N.W.
Washington, DC 20210

4.) All decisions by the Administrative Review Board are final.

=====

END OF GENERAL DECISION