

March 14, 2019

STATE OF RHODE ISLAND AND PROVIDENCE PLANTATION  
DEPARTMENT OF ADMINISTRATION

DIVISION OF PURCHASES BID NO. 7598647

RHODE ISLAND DEPARTMENT OF TRANSPORTATION

RHODE ISLAND CONTRACT NO.2019-CB-016

FEDERAL-AID PROJECT NO. FAP Nos: BRO-0778(002)

**Bridge Group 40B - Bath St East**

Providence Place to Promenade Street

CITY/TOWN OF Providence

COUNTY OF PROVIDENCE

NOTICE TO PROSPECTIVE BIDDERS

ADDENDUM NO. 1 Prospective bidders and all concerned are hereby notified of the following changes in the Plans, Specifications, Proposal and Distribution of Quantities for this contract. These changes shall be incorporated in the Plans, Specifications, Proposal and Distribution of Quantities, and shall become an integral part of the Contract Documents.

**A. Clarification**

1. Questions and Answers for: Bridge Group 40B - Bath Street 2019-CB-016

A copy of the questions and answers for the Bridge Group 40B - Bath Street 2019-CB-016 is attached to this Addendum No. 1.

**B. Drawings/Plans - Change/Addition**

1. Plan Sheet No. 5 - Job Specific Plan Symbols, Legend and Notes

Remove Sheet No. 5 in its entirety and replace it with revised Sheet No. 5 (R-1) attached to this Addendum No. 1. The description for Pavement Type P-1 has been revised.

2. Sheet No. 24 - Transverse and Longitudinal Sections

Remove Sheet No. 24 in its entirety and replace it with revised Sheet No. 24 (R-1) attached to this Addendum No. 1.

3. Sheet No. - 30 Typical Abutment Sections and Details Sheet 1

Remove Sheet No. 30 in its entirety and replace it with revised Sheet No. 30 (R-1) attached to this Addendum No. 1.

4. Sheet No. 40 - Deck Details

Remove Sheet No. 40 in its entirety and replace it with revised Sheet No. 40 (R-1) attached to this Addendum No. 1.

**C. Distribution of Quantities**

1. Index Pages 1 through 3

Remove Index Pages 1 through 3 their entirety and replace them with revised Index Pages 1 (R-1) through 3 (R-1) attached to this Addendum No. 1. The table of Contents has been revised.

2. Page 1

Remove Page 1 in its entirety and replace it with revised Page 1 (R-1) attached to this Addendum No. 1. The quantity for Item Code 201.0407 Remove and Dispose Pavement and Rigid Base has been revised.

3. Page 1a

Insert new Page 1a attached to this Addendum No. 1. The quantity for Item Code 201.0407 Remove and Dispose Pavement and Rigid Base has been revised.

4. Pages 2 and 3

Remove Pages 2 and 3 in their entirety and replace them with revised Pages 2 (R-1) and 3 (R-1) attached to this Addendum No. 1. The quantity for Item Code 201.0613 Remove and Stockpile Light Standards has been deleted.

5. Page 4

Remove Page 4 in its entirety and replace it with revised Page 4 (R-1) attached to this Addendum No. 1. The quantities for Item Code 202.0100 Earth Excavation and Item Code 203.0700 Pervious Fill have been revised.

6. Page 5

Remove Page 5 in its entirety and replace it with revised Page 5 (R-1) attached to this Addendum No. 1. The quantities for Item Code 203.0700 Pervious Fill and Item Code 204.0100 Trimming and Fine Grading have been revised.

7. Page 6

Remove Page 6 in its entirety and replace it with revised Page 6 (R-1) attached to this Addendum No. 1. The quantity for Gravel Borrow Subbase Course has been revised.

8. Page 7

Remove Page 7 in its entirety and replace it with revised Page 7 (R-1) attached to this Addendum No. 1. The quantities for Item Code 302.0100 Gravel Borrow Subbase Course and Item Code 403.0300 Asphalt Emulsion Tack Coat have been revised.

9. Page 7a

Insert new Page 7a attached to this Addendum No. 1. The quantity for Item Code 403.0300 Asphalt Emulsion Tack Coat has been revised.

10. Page 8

Remove Page 8 in its entirety and replace it with revised Page 8 (R-1) attached to this Addendum No. 1. The quantity for Item Code 601.0200 Class XX Portland Cement Concrete has been revised.

11. Page 22

Remove Page 22 in its entirety and replace it with revised Page 22 (R-1) attached to this Addendum No. 1. The quantity for Item Code T05.9901 Quazite Handhole has been deleted.

12. Page 28

Remove Page 28 in its entirety and replace it with revised Page 28 (R-1) attached to this Addendum No. 1. Item Code 201.9904 Remove and Stockpile Light Standards has been added.

13. Page 29

Insert new Page 29 attached to this Addendum No. 1. Item Code 203.0650 Crushed Stone Fill Under Structures, Item Code 401.1000 Class 19.0 HMA, Item Code T05.0320 Pull Box on Structure Type V Standard 18.6.3 and Item Code T06.5220 2 Inch Schedule 80 Polyvinyl Chloride Plastic Conduit - Underground have been added.

14. Page 2 of 2 (Assembly Summary)

Remove Page 2 of 2 (Assembly Summary) in its entirety and replace it with revised Page 2 of 2 (Assembly Summary) (R-1) attached to this Addendum No. 1. Assembly Pavement Type P-1 (PV-P1) has been deleted and Assembly Pavement Type P-1 Over Bridge Approach Slabs (PV-1A) and Assembly Pavement Type P-1 Outside Bridge Approach Slabs (PV-1B) have been added.



---

RI Department of Transportation

Administrator, Division of Project Management

## Questions and Answers For:

Bridge Group 40B - Bath Street 2019-CB-016

**Please Note:** *If this is the first time accessing our system on our new web site, you will be required to reset your password.*

**The ask question function is now disabled;  
please call 401-222-2495x 4100 with any new questions.**

**Date Asked:** 03/11/2019

**Date Answered:** 03/13/2019

**Poster:** Anthony Mesiti

**Company:** Cardi Corporation

**Question:**

Please clarify how is responsible for moving the MCI conduits and wire. Is there enough slack in the conduits to move the line to the temporary structure?

**Answer:**

As indicated on the Plans, the Contractor is responsible for the relocation of the existing MCI conduits (Refer to Special Provision Code 211.9901 ♦ Temporary Access/Work Platform ♦ for additional information). Based on coordination with the utility company, enough slack is available to accommodate the relocation scheme depicted on the Plans.

**Date Asked:** 03/07/2019

**Date Answered:** 03/08/2019

**Poster:** Anthony Mesiti

**Company:** Cardi Corporation

**Question:**

Please clarify if the Link Slab Pour for the bridge deck can be poured by hand since it is only 8' wide.

**Answer:**

The Department will consider alternate methods of screeding/finishing the 8' ♦ wide link slab provided all other requirements of the Standard Specifications are satisfied.

**Date Asked:** 03/05/2019

**Date Answered:** 03/06/2019

**Poster:** Anthony Mesiti

**Company:** Cardi Corporation

**Question:**

SHEET 31 DETAIL 2 PLEASE CLARIFY HOW THE CRUSHED STONE UNDER APPROACH SLAB IS PAID FOR.



**Answer:**

A separate pay item will be added by Addendum.

**Date Asked:** 03/05/2019**Date Answered:** 03/06/2019**Poster:** Anthony Mesiti**Company:** Cardi Corporation**Question:**

ITEM 601.0200 - CLASS XX PORTLAND CEMENT CONCRETE INCLUDES 51.38 CY AT THE APPROACHES OF THE BRIDGE. THIS QUANTITY INCLUDES QUANTITY FOR THE APPROACH SLAB. PLEASE CLARIFY IF THE APPROACH SLAB IS INCLUDED UNDER 601.0200 OR 800.9901.

**Answer:**

Item 601.0200 is part of the roadway make-up beyond the limits of the approach slab; the limits will be clarified by Addendum. The approach slab is paid for under Item 800.9901.

**Date Asked:** 03/04/2019**Date Answered:** 03/05/2019**Poster:** Anthony Mesiti**Company:** Cardi Corporation**Question:**

Sheet 44 shows granite ID tablets. Please clarify where the new tablets are located.

**Answer:**

Refer to Sheet 22 of 45 for the location of the new granite ID tablets.

**Date Asked:** 03/04/2019**Date Answered:** 03/05/2019**Poster:** Anthony Mesiti**Company:** Cardi Corporation**Question:**

Please clarify the type of pavement over the approach slab and which item the pavement is paid for.

**Answer:**

The pavement make-up over the approach slab are highway items. The type of pavement and pay items will be clarified by Addendum.

**Date Asked:** 03/04/2019**Date Answered:** 03/05/2019**Poster:** Anthony Mesiti**Company:** Cardi Corporation**Question:**

Please clarify how the CLSM under the approach sidewalks is paid for.

**Answer:**

Reference to CLSM is incorrect. The details will be revised by Addendum to show excavation/fill pay limits consistent with other details associated with the abutments and walls.



**JOB SPECIFIC LEGEND**

- (4W) 4" EPOXY RESIN PAVEMENT MARKINGS - WHITE
- (7.3.2M) TRANSITION GRANITE CURB STRAIGHT OR CIRCULAR - 7" WIDTH, PROVIDENCE STD. FROM 6" REVEAL TO 7" REVEAL AT BRIDGE
- (7.3.3M) GRANITE WHEELCHAIR RAMP TRANSITION CURB STRAIGHT OR CIRCULAR - 7" WIDTH, PROVIDENCE STD.
- (7.3.9M) GRANITE RAMP STONE STRAIGHT OR CIRCULAR - 7" WIDTH, PROVIDENCE STD.
- (19.6.0) INDUCTION LOOP VEHICLE DETECTOR
- (43.3.0M) WHEELCHAIR RAMP STRAIGHT OR CIRCULAR - 7" WIDTH CURB, PROVIDENCE STD.
- (CW) CROSS WALK 24" WHITE EPOXY RESIN PAVEMENT MARKING LINES WITH 24" GAP AND 8"-0" WIDTH
- (P) 2" REMOVING BITUMINOUS PAVEMENT BY MICRO MILLING  
2" MODIFIED CLASS 12.5 HMA SURFACE COURSE
- (P-1) **PAVEMENT OVER BRIDGE APPROACH SLAB**  
2" MODIFIED CLASS 12.5 HMA  
2" MODIFIED CLASS 12.5 HMA  
CLASS 19.0 HMA (DEPTH VARIES 0" TO 6")  
**PAVEMENT OUTSIDE BRIDGE APPROACH SLAB**  
2" MODIFIED CLASS 12.5 HMA  
2" MODIFIED CLASS 12.5 HMA  
6" CLASS 19.0 HMA (2-3" LIFTS)  
12" GRAVEL BORROW SUBBASE COURSE
- (S-1) CUTTING AND MATCHING ASPHALT RI STD 47.1.0
- (S-4) FULL DEPTH SAWCUT OF RIGID BASE BITUMINOUS PAVEMENT
- (S-6) FULL DEPTH SAWCUT OF PORTLAND CEMENT CONCRETE SIDEWALK/DRIVEWAY
- (SCCB) SEDIMENTATION CONTROL FOR CATCH BASINS
- (T6W) 6" WHITE FAST DRYING WATERBORNE PAVEMENT MARKING PAINT
- (T6Y) 6" YELLOW FAST DRYING WATERBORNE PAVEMENT MARKING PAINT
- (WCRA) WHEELCHAIR RAMP STD. 43.3.0M WITH TRANSITION CURB STD. 7.3.2M, TRANSITION CURB STD. 7.3.3M, RAMP STONE STD. 7.3.9M AND DETECTABLE WARNING SYSTEM STD. 48.1.0.

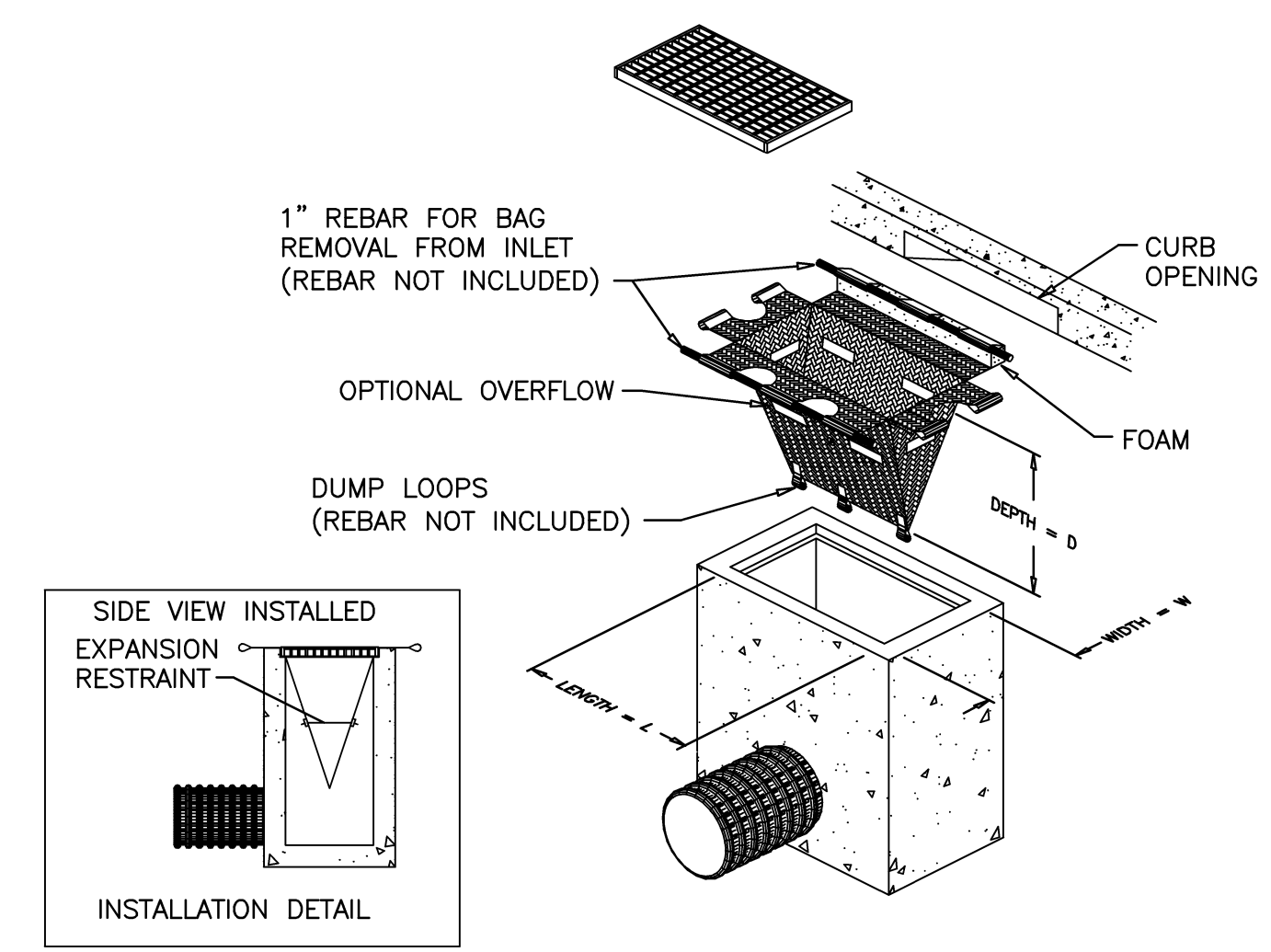
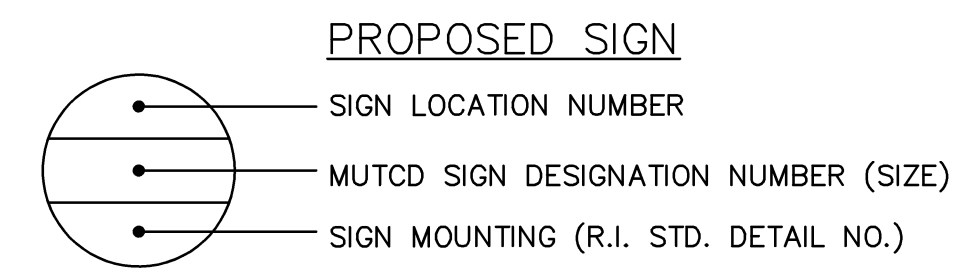
**JOB SPECIFIC GENERAL NOTES:**

- A PORTION OF THIS SITE IS LOCATED WITHIN MAPPED 100-YEAR FLOODPLAIN AND FLOODWAY, AS SHOWN IN THE FEDERAL EMERGENCY MANAGEMENT AGENCY (FEMA) FLOOD INSURANCE RATE MAP (FIRM) MAP NUMBER 44007C0312H, REVISION DATE OCTOBER 2, 2015.
- ALL SURVEY FIELDBOOKS AND ELECTRONIC DATA SHALL BE SUBMITTED TO THE RIDOT SURVEY SECTION UPON COMPLETION OF PROJECT ALSO TO INCLUDE A LISTING OF ALL RI HIGHWAY BOUND DATA WITH STATIONS, OFFSETS AND COORDINATES.
- ALL EXISTING DRAINAGE STRUCTURES TO REMAIN SHALL BE CLEANED AND INSPECTED AT THE BEGINNING OF THE WORK. ANY NECESSARY REPAIRS SHALL BE BROUGHT TO THE ATTENTION OF THE ENGINEER.
- THE DRAINAGE SYSTEM SHALL BE INSPECTED AND CLEANED, AS REQUIRED, PRIOR TO ACCEPTANCE OF THE OVERALL PROJECT. THERE SHALL BE NO SEPARATE PAYMENT FOR THIS PROVISION; IT SHALL BE CONSIDERED INCIDENTAL TO OTHER ITEMS OF WORK IN ACCORDANCE WITH SUBSECTION 104.11 OF THE STANDARD SPECIFICATIONS.
- NO EQUIPMENT (SCAFFOLDING, ETC.) SHALL BE PLACED IN ANY WETLAND OR WATERWAY DURING CONSTRUCTION.
- THE CONTRACTOR SHALL STOCKPILE THE GRANITE CURB AT THE CITY OF PROVIDENCE HIGHWAY DEPARTMENT YARD ON ERNEST STREET. THE CONTRACTOR SHALL CLEAN CONCRETE AND DEBRIS FROM THE GRANITE CURB BEFORE DELIVERING THE GRANITE CURB TO THE CITY OF PROVIDENCE. THE CONTRACTOR SHALL CONTACT THE CITY OF PROVIDENCE HIGHWAY SUPERINTENDENT TO ARRANGE A TIME AT THE SALVAGE AREA BEFORE DELIVERING THE GRANITE CURB. THE CONTRACTOR SHALL PLACE THE GRANITE CURB IN THE HIGHWAY DEPARTMENT YARD'S STOCKPILE AREA SO AS NOT TO BREAK THE GRANITE CURB. THE COST TO HAUL, HANDLE, CLEAN, COORDINATE, DELIVER, AND PLACE THE GRANITE CURB INCLUDING ALL INCIDENTALS SHALL BE INCLUDED IN THE UNIT BID PRICE FOR ITEM CODE 201.0450 "REMOVE AND STOCKPILE ON SITE GRANITE CURB".

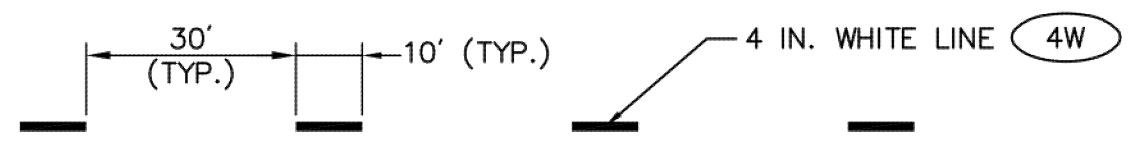
**JOB SPECIFIC PAVEMENT MARKINGS NOTES:**

- ALL PAVEMENT MARKINGS ARE TO BE IN ACCORDANCE WITH THE REQUIREMENTS OF THE MANUAL ON UNIFORM TRAFFIC CONTROL DEVICES, LATEST EDITION.
- FINAL PAVEMENT MARKINGS SHALL BE WHITE AND YELLOW EPOXY RESIN.
- SEE THE GENERAL PROVISIONS - CONTRACT SPECIFIC DOCUMENTS FOR SPECIAL REQUIREMENTS FOR PAVEMENT MARKINGS.
- BIKE LANE INTERSECTION PAVEMENT MARKING (GREEN) SHALL BE THERMAL APPLIED TAPE FROM ENNIS FLINT OR APPROVED EQUAL.

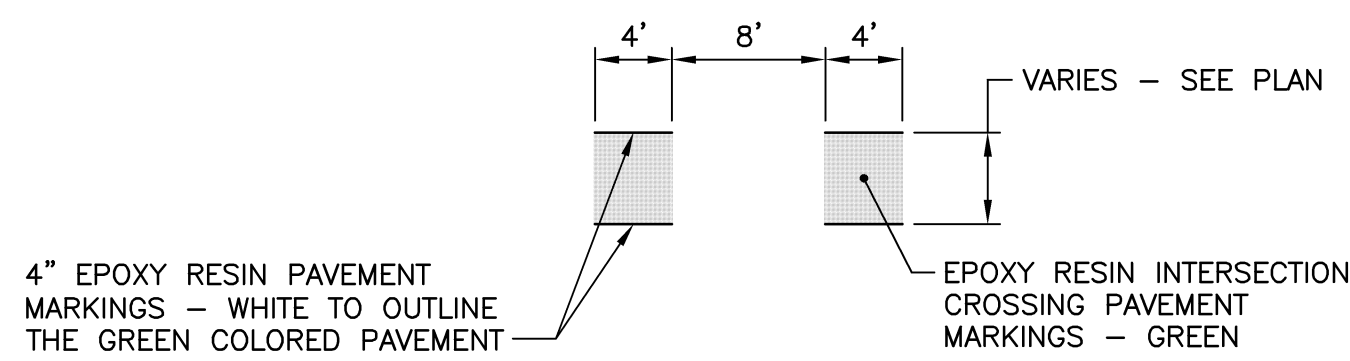
**TYPICAL SIGN DESIGNATION SYMBOL**



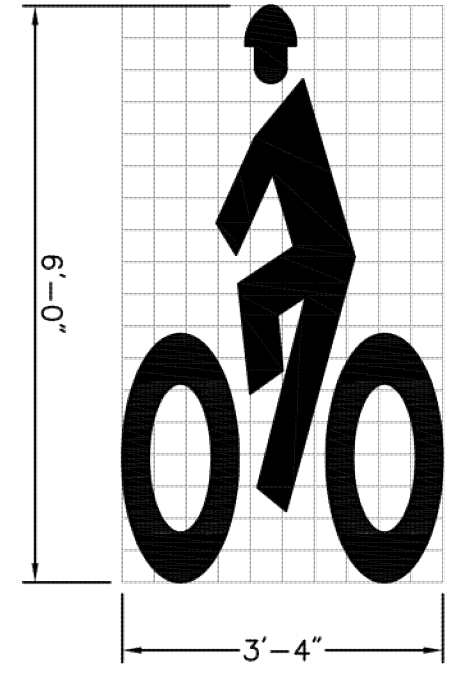
(SCCB) **SEDIMENTATION CONTROL - CATCH BASIN**  
NOT TO SCALE



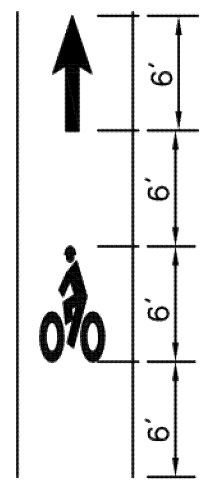
**BROKEN WHITE LANE LINE (4BW)**  
NOT TO SCALE



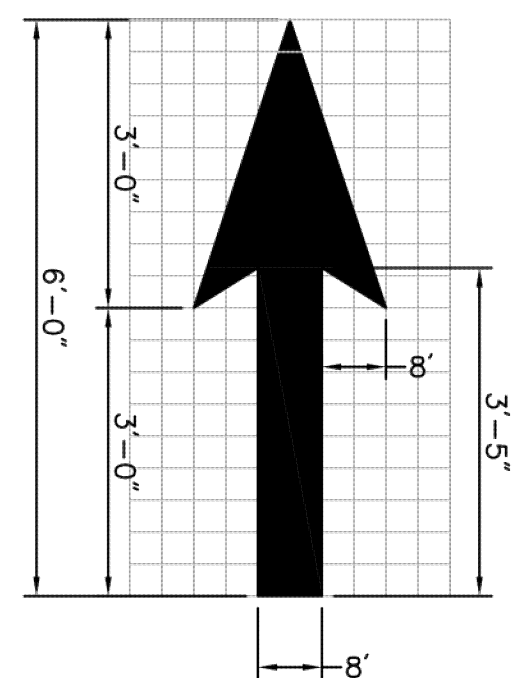
**TYPICAL BIKE LANE INTERSECTION PAVEMENT MARKING DETAILS**  
SCALE: 1"=10'



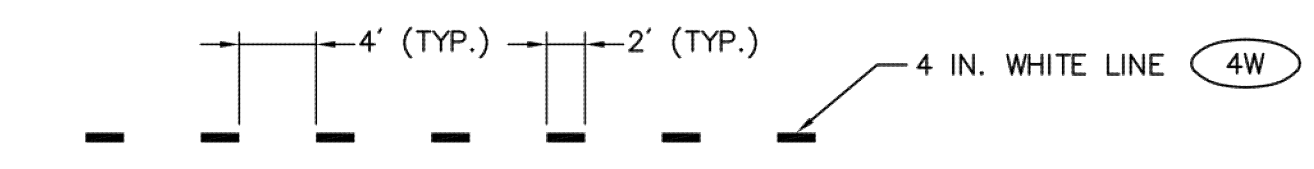
**BIKE RIDER PAVEMENT MARKING DETAIL**  
NOT TO SCALE



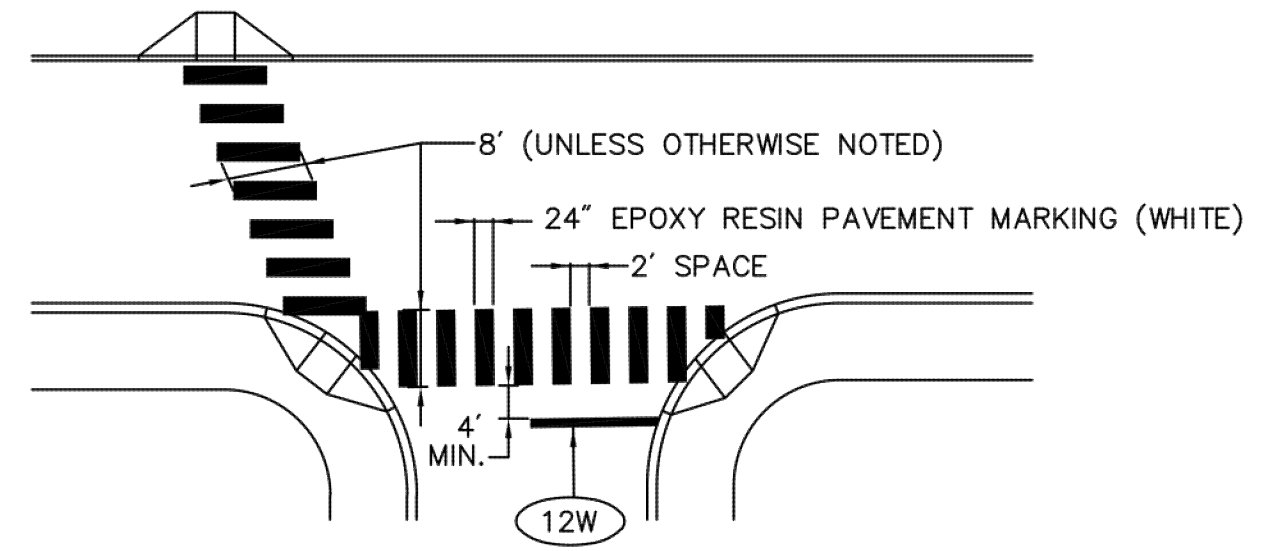
**TYPICAL BIKE LANE MARKING DETAIL (BLM)**  
NOT TO SCALE



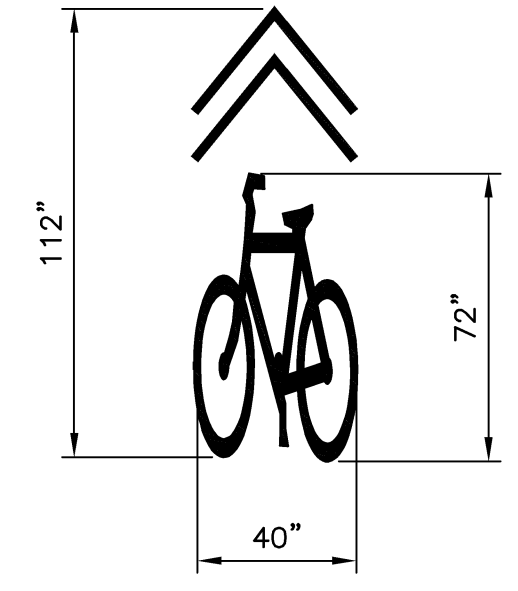
**STRAIGHT ARROW PAVEMENT MARKING DETAIL**  
NOT TO SCALE



**INTERSECTION WHITE GUIDE LINE MARKING DETAIL (4DSW)**  
NOT TO SCALE



**CROSS WALK DETAIL (CW)**  
NOT TO SCALE



**SHARED LANE MARKING DETAIL**  
SCALE: 1"=4'



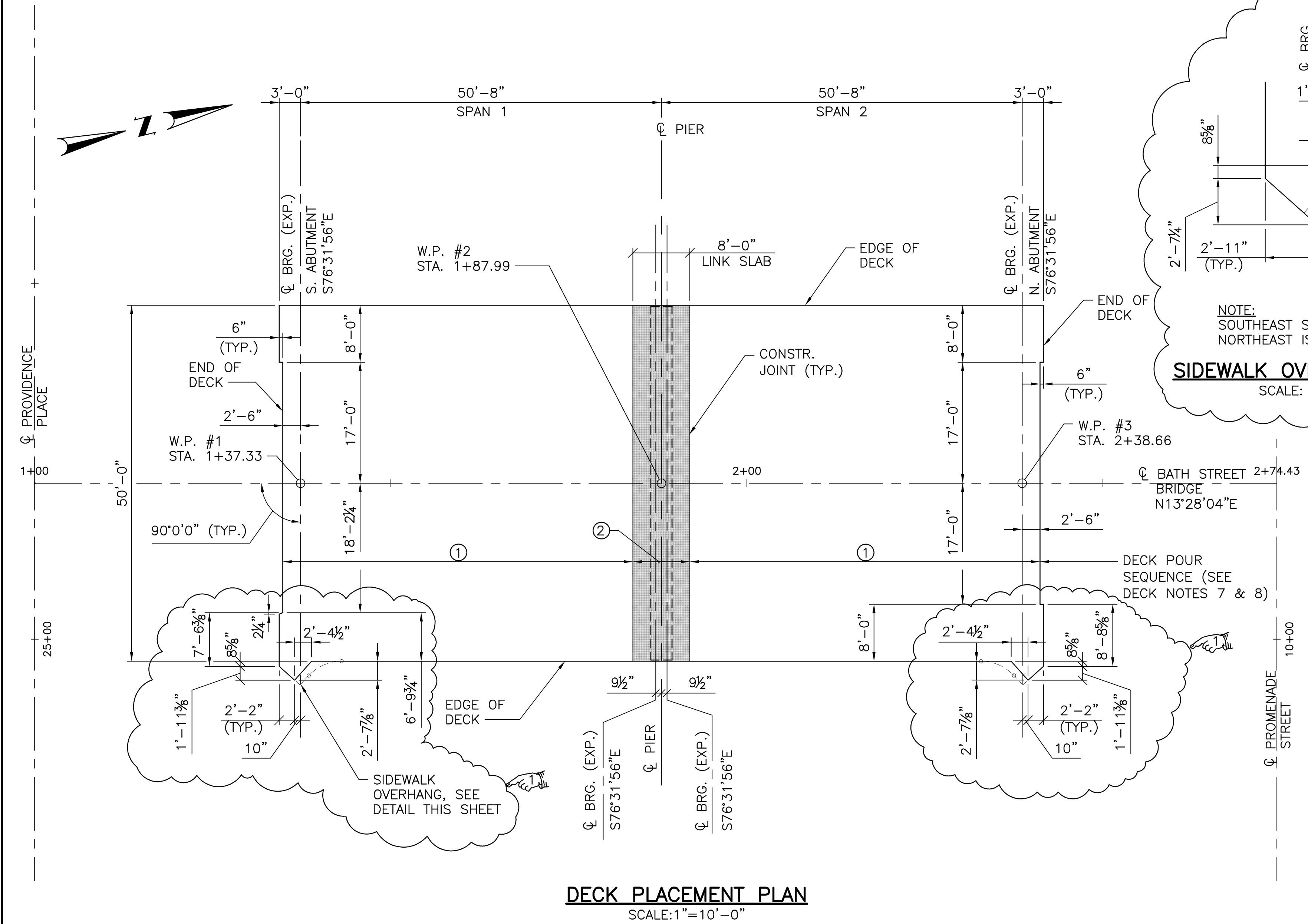
ADDENDUM No. 1

REVISIONS			RHODE ISLAND DEPARTMENT OF TRANSPORTATION	
NO.	DATE	BY		
1	3/14/19	NS	BRIDGE SUPERSTRUCTURE REPLACEMENT BRIDGE GROUP 40B - BATH STREET EAST PROVIDENCE, RHODE ISLAND	
			<b>JOB SPECIFIC</b> PLAN SYMBOLS, LEGEND AND NOTES	
			CHECKED BY _____	DATE _____ SCALE NO SCALE

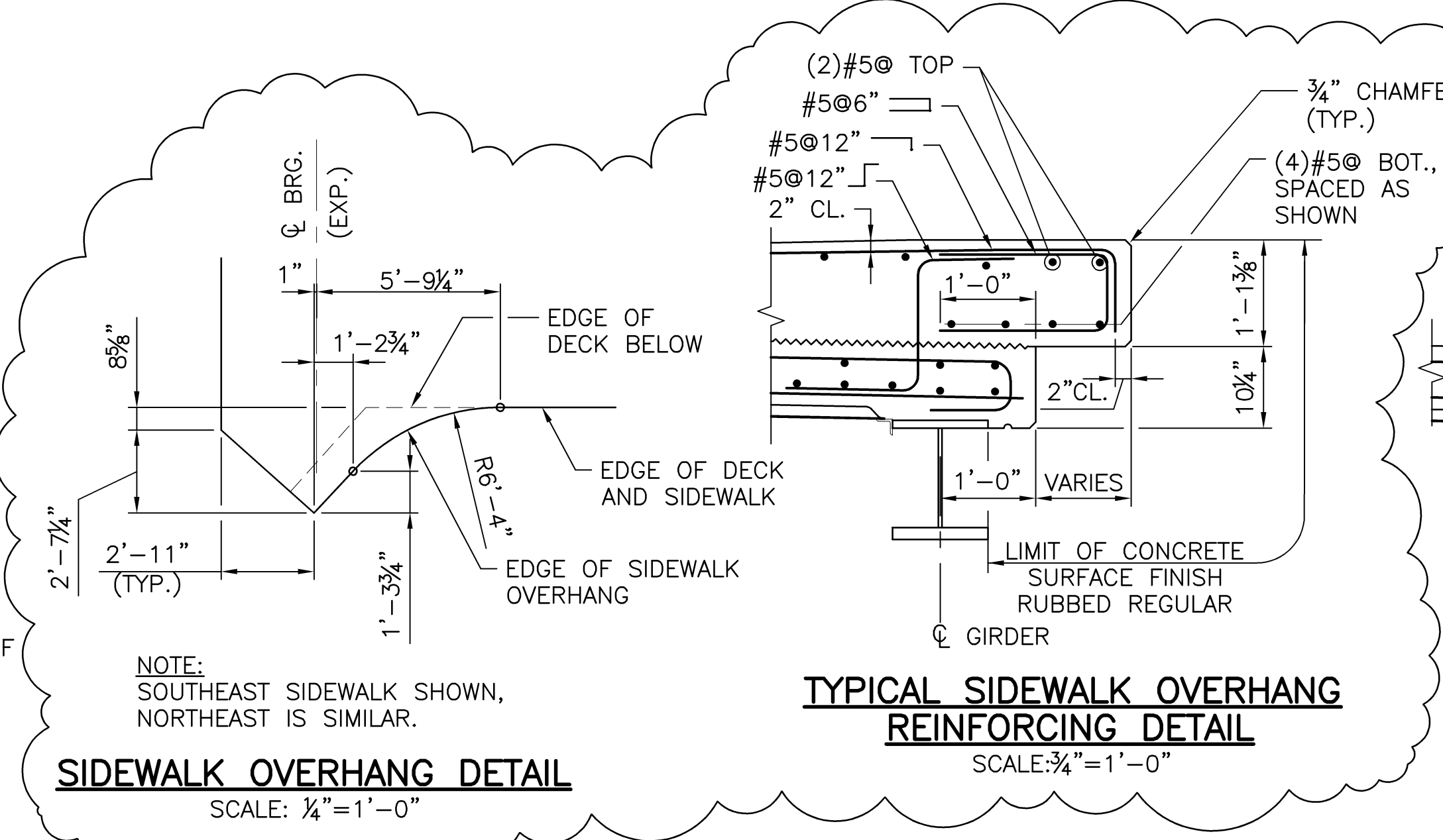




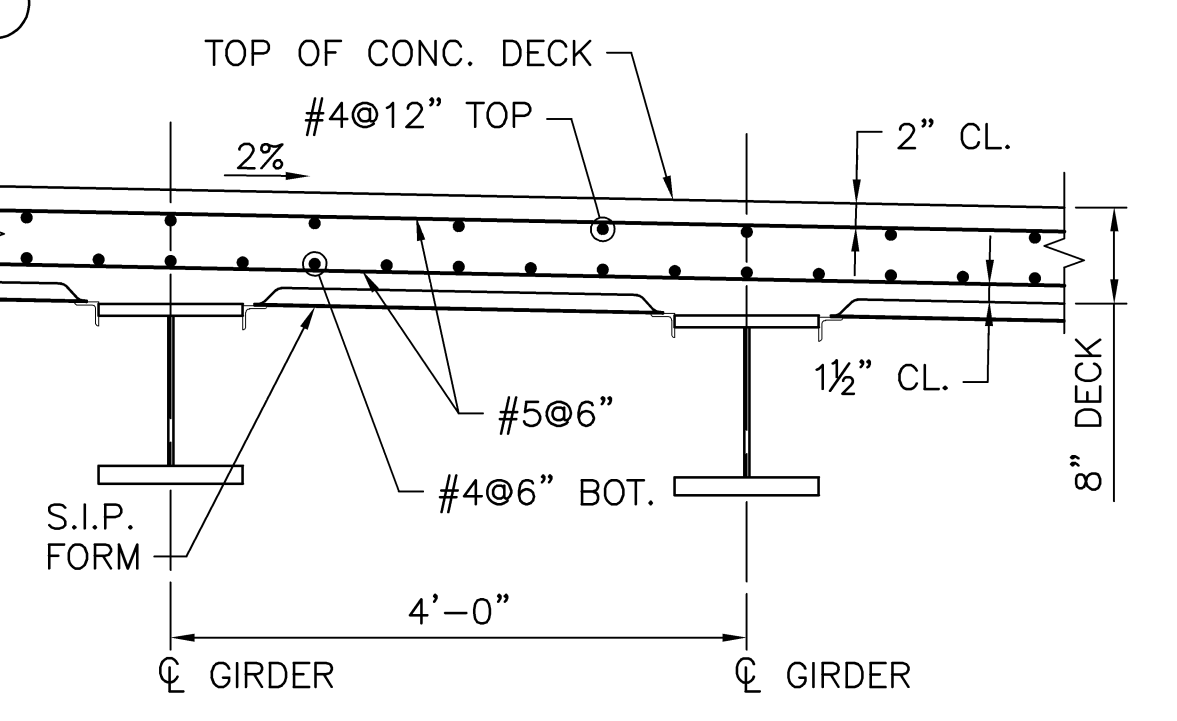




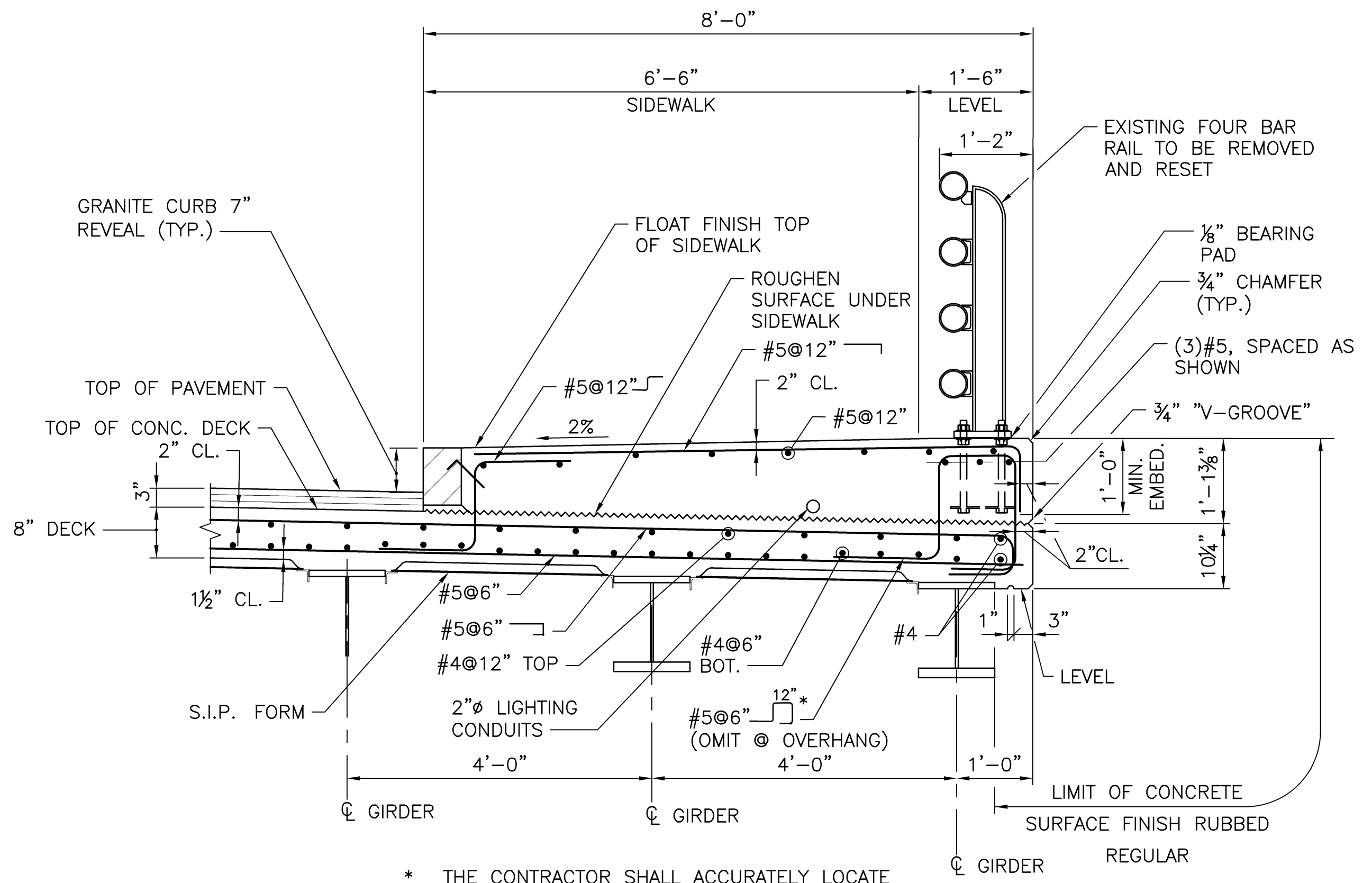
**DECK PLACEMENT PLAN**  
SCALE: 1" = 10'-0"



**TYPICAL SIDEWALK OVERHANG REINFORCING DETAIL**  
SCALE: 3/4" = 1'-0"



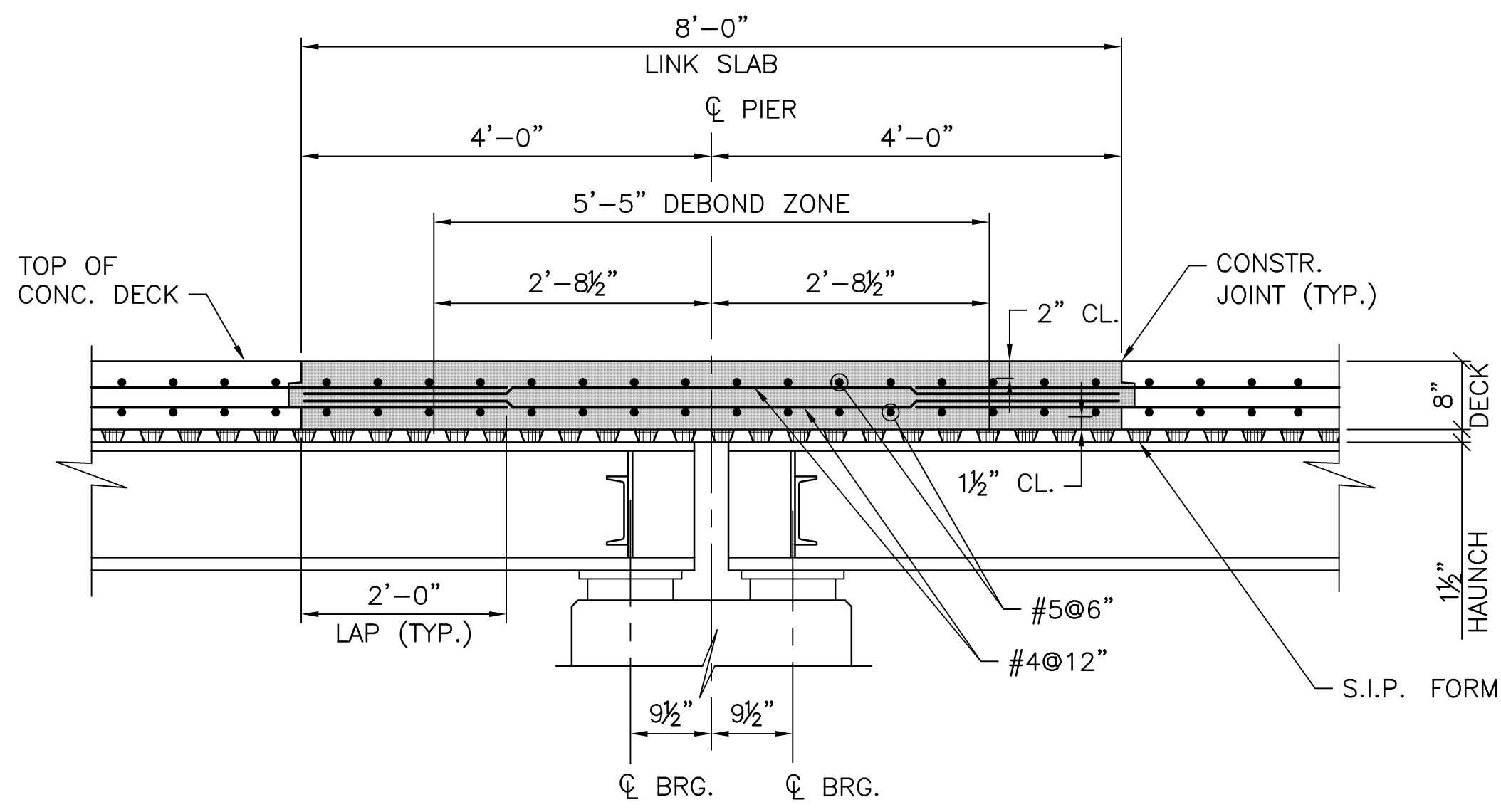
**TYPICAL DECK REINFORCING DETAIL**  
SCALE: 3/4" = 1'-0"



**TYPICAL SIDEWALK AND DECK REINFORCING**  
SCALE: 3/4" = 1'-0"

**DECK NOTES:**

1. TRANSVERSE REINFORCEMENT LISTED AS STRAIGHT SHALL BE SHOP OR FIELD BENT AS REQUIRED TO PROVIDE MINIMUM COVER.
2. DECK SLAB REINFORCING COVER SHALL HAVE TOLERANCE OF (+) 1/4", (-) 0" FOR TOP BARS AND (+) 1/8", (-) 0" FOR BOTTOM BARS.
3. CHAIRS SHALL BE SPACED TO PROVIDE THE REQUIRED CONCRETE COVER WITH THE SPECIFIED TOLERANCES. MAXIMUM SPACING OF CHAIRS SHALL BE 5'-0" ON CENTER, PREFERABLY LOCATED AT THE INTERSECTION OF REINFORCEMENT. CHAIRS SHALL HAVE APPROVED CORROSION PROTECTION.
4. ALL TRANSVERSE DECK REINFORCEMENT TO BE PLACED PARALLEL TO CENTERLINE OF BEARING. LONGITUDINAL REINFORCEMENT SHALL BE PLACED PARALLEL TO CONSTRUCTION BASELINE.
5. TOP BARS SHALL BE LAPPED MIDWAY BETWEEN GIRDERS. BOTTOM BARS SHALL BE LAPPED OVER GIRDERS.
6. FOR SUBPAVEMENT DRAIN DETAILS, SEE "MISCELLANEOUS DETAILS" SHEET.
7. DECK SECTION ① SHALL BE CAST FIRST IN ACCORDANCE WITH THE RI STANDARD SPECIFICATIONS FOR SIMPLE SPANS.
8. DECK SECTION ②, THE LINK SLAB, SHALL BE CAST AFTER A MINIMUM OF 72 HOURS HAVE ELAPSED AFTER DECK SECTIONS ① HAVE BEEN CAST.



**TYPICAL LINK SLAB SECTION**  
SCALE: 3/4" = 1'-0"

ADDENDUM No. 1



REVISIONS		
NO.	DATE	BY
1	3/12/19	WK

**RHODE ISLAND**  
**DEPARTMENT OF TRANSPORTATION**

**BRIDGE SUPERSTRUCTURE REPLACEMENT**  
**BRIDGE GROUP 40B - BATH STREET EAST**

PROVIDENCE, RHODE ISLAND

**DECK DETAILS**

CHECKED BY \_\_\_\_\_ DATE \_\_\_\_\_ SCALE AS SHOWN

## Table of Contents - Distribution of Quantities

Project Name - Bridge Group 40B - Bath St East  
 Estimate Name - Addendum to Bridge Group 40B - Bath St East  
 R.I. Contract No. - 2019-CB-016  
 FAP Nos: BRO-0778(002)

ItemCode	Description	Page
201.0403	REMOVE AND DISPOSE SIDEWALKS	1
<b>201.0407</b>	<b>REMOVE AND DISPOSE PAVEMENT AND RIGID BASE</b>	<b>1</b>
201.0423	REMOVE AND DISPOSE HANDHOLE	1
201.0450	REMOVE AND STOCKPILE ON SITE GRANITE CURB	2
201.0604	REMOVE AND DISPOSE GROUND MOUNTED SIGN POSTS	2
201.0610	REMOVE AND DISPOSE DIRECTIONAL, WARNING, REGULATORY, SERVICE, AND STREET SIGNS	2
<b>201.0613</b>	<b>** ITEM DELETED **</b>	<b>2</b>
201.0616	REMOVE AND DISPOSE LIGHT STANDARD FOUNDATIONS	3
201.0617	REMOVE AND DISPOSE CONDUIT - ALL SIZES	3
201.9901	REMOVE AND STOCKPILE SHOCK ABSORBING BARRIER MODULES	3
201.9902	REMOVE AND STOCKPILE DRUM BARRICADES	3
201.9903	REMOVE AND STOCKPILE TEMPORARY CONCRETE BARRIER	3
<b>202.0100</b>	<b>EARTH EXCAVATION</b>	<b>4</b>
203.0100	STRUCTURAL EXCAVATION EARTH	4
<b>203.0700</b>	<b>PERVIOUS FILL</b>	<b>4</b>
<b>204.0100</b>	<b>TRIMMING AND FINE GRADING</b>	<b>5</b>
209.9901	SEDIMENTATION CONTROL FOR CATCH BASINS	5
211.9901	TEMPORARY ACCESS/WORK PLATFORM	6
212.2000	CLEANING AND MAINTENANCE OF EROSION CONTROLS	6
<b>302.0100</b>	<b>GRAVEL BORROW SUBBASE COURSE</b>	<b>6</b>
<b>401.2100</b>	<b>MODIFIED CLASS 12.5 HMA</b>	<b>7</b>
<b>403.0300</b>	<b>ASPHALT EMULSION TACK COAT</b>	<b>7</b>
<b>601.0200</b>	<b>CLASS XX PORTLAND CEMENT CONCRETE</b>	<b>8</b>
707.0950	ADJUST TELEPHONE MANHOLE TO GRADE	8
707.0955	ADJUST ELECTRICAL MANHOLE TO GRADE	8
707.1000	ADJUST SANITARY MANHOLE	8
707.1100	ADJUST CATCH BASINS	9
707.1900	ADJUST FRAME & COVER TO GRADE	9
708.9040	CLEANING AND FLUSHING PIPE ALL SIZES	9
708.9041	CLEANING CATCH BASINS ALL TYPES AND SIZES	10
712.0100	WATER GATE BOX	10
713.8269	ADJUST WATER GATE BOXES TO GRADE	10
713.8300	ADJUST GAS GATE BOXES TO GRADE	10
800.9901	BATH STREET BRIDGE NO. 778	11
803.9901	REMOVE AND DISPOSE EXISTING BATH STREET BRIDGE NO. 778	11
817.9901	FURNISH, FABRICATE, AND INSTALL - FRP COMPOSITE SYSTEM	11
821.1690	SAW & SEALING JOINTS IN BITUMINOUS CONCRETE PAVEMENT	11
830.9901	REMOVE, REFURBISH, AND RESET 4-BAR RAIL	11
903.0410	TEMPORARY CHAIN LINK FENCE	12
905.0110	PORTLAND CEMENT SIDEWALK MONOLITHIC STANDARD 43.1.0	12
906.0700	REMOVE, HANDLE, HAUL TRIM RESET CURB EDGING, STRAIGHT, CIRCULAR ALL TYPES	12
906.9905	FURNISH AND INSTALL GRANITE TRANSITION CURB CIRCULAR - 7" WIDTH, PROVIDENCE STD.	13
906.9906	FURNISH AND INSTALL GRANITE WHEELCHAIR RAMP CURB STRAIGHT OR CIRCULAR - 7" WIDTH, PROVIDENCE STD.	13
906.9908	FURNISH AND INSTALL GRANITE RAMP STONE STRAIGHT OR CIRCULAR - 7" WIDTH, PROVIDENCE STD.	13
907.0100	WATER FOR DUST CONTROL	14
914.5010	FLAGPERSONS	14
914.5020	FLAGPERSONS - OVERTIME	14
916.0600	SHOCK ABSORBING BARRIER MODULES	14
922.0100	TEMPORARY CONSTRUCTION SIGNS STANDARD 29.1.0 AND 27.1.1	14

## Table of Contents - Distribution of Quantities

Project Name - Bridge Group 40B - Bath St East  
 Estimate Name - Addendum to Bridge Group 40B - Bath St East  
 R.I. Contract No. - 2019-CB-016  
 FAP Nos: BRO-0778(002)

ItemCode	Description	Page
923.0105	DRUM BARRICADE STANDARD 26.2.0	16
923.0120	PLASTIC PIPE BARRICADE STANDARD 26.3.0	16
923.0200	FLUORESCENT TRAFFIC CONES STANDARD 26.1.0	16
924.0113	ADVANCE WARNING ARROW PANEL	16
926.0121	UNANCHORED PRECAST CONCRETE BARRIER FOR TEMPORARY TRAFFIC CONTROL STANDARD 40.5.0	17
926.0140	REFLECTIVE DELINEATORS FOR TEMPORARY CONCRETE BARRIERS	17
929.0110	FIELD OFFICE	17
931.0110	CLEANING AND SWEEPING PAVEMENT	17
932.0100	CUTTING AND MATCHING ASPHALT	18
932.0210	FULL DEPTH SAWCUT OF BITUMINOUS PAVEMENT AND RIGID BASE	18
932.0230	FULL DEPTH SAWCUT OF PORTLAND CEMENT CONCRETE SIDEWALK/DRIVEWAY	18
935.0400	REMOVING BITUMINOUS PAVEMENT BY MICRO MILLING	19
936.0110	MOBILIZATION	19
937.0200	MAINTENANCE AND MOVEMENT TRAFFIC PROTECTION	19
942.0200	DETECTABLE WARNING PANEL STANDARD 48.1.0	19
L01.0102	LOAM BORROW 4 INCHES DEEP	20
L02.0102	RESIDENTIAL SEEDING (TYPE 2)	20
L08.0109	TREE TRIMMING	20
T04.6906	'6' STRANDED COPPER CONDUCTOR 600V INSULATION	20
T04.6908	'8' STRANDED COPPER CONDUCTOR 600V INSULATION	20
T04.6910	'10' STRANDED COPPER CONDUCTOR 600V INSULATION	21
T04.7300	IN-LINE FUSED DISCONNECT DEVICE WITH FUSE WEATHERPROOF	21
T04.7400	IN-LINE UNFUSED DISCONNECT DEVICE	21
T04.7500	SPLICE KIT	21
T05.0100	PRECAST TYPE A HANDHOLE STANDARD 18.2.0	21
T05.0400	BREAK INTO EXISTING HANDHOLE	22
<b>T05.9901</b>	<b>** ITEM DELETED **</b>	<b>22</b>
T06.1020	2 IN. RIGID STEEL CONDUIT - UNDERGROUND	22
T06.5430	3 INCH SCHEDULE 80 POLYVINYL CHLORIDE PLASTIC CONDUIT - UNDER EXISTING PAVEMENT	22
T06.7044	EXPANSION COUPLING WITH TRANSVERSE MOTION 4" PVC	22
T08.0100	LIGHT STANDARD FOUNDATION WITH ANCHOR BOLTS STANDARD 18.1.0	23
T08.9901	FURNISH AND INSTALL TYPE "A" ORNAMENTAL LUMINAIRE ON 12 FOOT POLE	23
T13.1000	TRAFFIC DETECTORS-LOOP, STANDARD 19.6.0	23
T15.0100	DIRECTIONAL REGULATORY AND WARNING SIGNS	23
T20.0006	6 INCH WHITE FAST - DRYING WATERBORNE PAVEMENT MARKING PAINT	24
T20.0012	12 INCH WHITE FAST - DRYING WATERBORNE PAVEMENT MARKING PAINT	24
T20.0106	6 INCH YELLOW FAST - DRYING WATERBORNE PAVEMENT MARKING PAINT	24
T20.1000	REMOVE EXISTING PAVEMENT MARKINGS	24
T20.1010	REMOVE EXISTING PAVEMENT MARKINGS	25
T20.1104	4 INCH TEMPORARY WATERBORNE PAINT PAVEMENT MARKINGS WHITE	25
T20.1112	12 INCH TEMPORARY WATERBORNE PAINT PAVEMENT MARKINGS WHITE	25
T20.1204	4 INCH TEMPORARY WATERBORNE PAINT PAVEMENT MARKINGS YELLOW	26
T20.2004	4 INCH EPOXY RESIN PAVEMENT MARKINGS WHITE	26
T20.2012	12 INCH EPOXY RESIN PAVEMENT MARKINGS WHITE	27
T20.2013	24 INCH EPOXY RESIN PAVEMENT MARKINGS WHITE	27
T20.2014	4 INCH EPOXY RESIN PAVEMENT MARKINGS YELLOW	27

**Table of Contents - Distribution of Quantities**

Project Name - Bridge Group 40B - Bath St East  
 Estimate Name - Addendum to Bridge Group 40B - Bath St East  
 R.I. Contract No. - 2019-CB-016  
 FAP Nos: BRO-0778(002)

<b>ItemCode</b>	<b>Description</b>	<b>Page</b>
T20.2020	EPOXY RESIN PAVEMENT ARROW - STRAIGHT, LEFT, RIGHT, OR COMBINED STANDARD 20.1.0	27
T20.2044	EPOXY RESIN PAVEMENT MARKING - HELMETED BICYCLIST SYMBOL WITH ARROW	28
T20.9901	FAST DRYING WATERBORNE PAVEMENT MARKING - SHARED LANE	28
T20.9902	BIKE LANE EPOXY RESIN INTERSECTION CROSSING PAVEMENT MARKINGS - GREEN	28
<b>201.9904</b>	<b>REMOVE AND STOCKPILE LIGHT STANDARDS</b>	<b>28</b>
<b>203.0650</b>	<b>CRUSHED STONE FILL UNDER STRUCTURES</b>	<b>29</b>
<b>401.1000</b>	<b>CLASS 19.0 HMA</b>	<b>29</b>
<b>T05.0320</b>	<b>PULL BOX ON STRUCTURE TYPE V STANDARD 18.6.3</b>	<b>29</b>
<b>T06.5220</b>	<b>2 INCH SCHEDULE 80 POLYVINYL CHLORIDE PLASTIC CONDUIT - UNDERGROUND</b>	<b>29</b>

### Distribution of Quantities

Project Name - Bridge Group 40B - Bath St East  
 Estimate Name - Addendum to Bridge Group 40B - Bath St East  
 R.I. Contract No. - 2019-CB-016  
 FAP Nos: BRO-0778(002)

Item No.	Item Code	Description	UM	Qty.	Pay Code	Seq. No.
001	201.0403	<b>REMOVE AND DISPOSE SIDEWALKS</b>	<b>SY</b>			
		PROMENADE STREET				
		10+05, 15' RT		49.67	0011	01
		9+55, 15' RT		36.44	0011	01
		PROVIDENCE PLACE				
		24+50, 21' LT		11.11	0011	01
		25+05, 25' LT		20.00	0011	01
		OFF-RAMP WHEELCHAIR RAMPS		14.00	0011	01
		QUANTITY				
		ROUNDING		0.78	0011	01
<b>Item 201.0403 Total:</b>				<b>132.00</b>		
002	201.0407	<b>REMOVE AND DISPOSE PAVEMENT AND RIGID BASE</b>	<b>SY</b>			
		BATH STREET (PV-1A)				
		1+21 TO 1+37 (PV-1A)		53.00	0011	01
		2+38 TO 2+60 (PV-1A)		53.00	0011	01
		BATH STREET (PV-1B)				
		STA. 1+21 TO 1+37 (PV-1B)		28.00	0011	01
		STA. 2+38 TO 2+60 (PV-1B)		39.00	0011	01
		PROMENADE STREET (RHHRC)				
		10+09 RT TO 10+36 RT (RHHRC)		4.88	0011	01
		9+05 RT TO 9+49 RT (RHHRC)		2.99	0011	01
		PROVIDENCE PLACE (RHHRC)				
		24+49 LT TO 24+53 LT (RHHRC)		0.44	0011	01
		25+10 LT TO 25+31 LT (RHHRC)		2.77	0011	01
		QUANTITY				
		ROUNDING		0.92	0011	01
<b>Item 201.0407 Total:</b>				<b>185.00</b>		
S003	201.0423	<b>REMOVE AND DISPOSE HANDHOLE</b>	<b>EACH</b>			
		BATH ST BRIDGE NO. 778				
		BATH ST		6.00	0011	01

**Distribution of Quantities**

Project Name - Bridge Group 40B - Bath St East  
Estimate Name - Addendum to Bridge Group 40B - Bath St East  
R.I. Contract No. - 2019-CB-016  
FAP Nos: BRO-0778(002)

<b>Item No.</b>	<b>Item Code</b>	<b>Description</b>	<b>UM</b>	<b>Qty.</b>	<b>Pay Code</b>	<b>Seq. No.</b>
S003	201.0423	Cont. PROVIDENCE PLACE		1.00	0011	01
<b>Item 201.0423 Total:</b>				<b>7.00</b>		

### Distribution of Quantities

Project Name - Bridge Group 40B - Bath St East  
 Estimate Name - Addendum to Bridge Group 40B - Bath St East  
 R.I. Contract No. - 2019-CB-016  
 FAP Nos: BRO-0778(002)

Item No.	Item Code	Description	UM	Qty.	Pay Code	Seq. No.
004	201.0450	REMOVE AND STOCKPILE ON SITE	LF			
		GRANITE CURB				
		BATH ST				
		1+25 LT		20.00	0011	01
		1+25 RT		20.00	0011	01
		2+50 LT		20.00	0011	01
		2+50 RT		20.00	0011	01
<b>Item 201.0450 Total:</b>				<b>80.00</b>		
005	201.0604	REMOVE AND DISPOSE GROUND MOUNTED	EACH			
		SIGN POSTS				
		BATH ST				
		1+21, 20' LT		1.00	0011	01
<b>Item 201.0604 Total:</b>				<b>1.00</b>		
006	201.0610	REMOVE AND DISPOSE DIRECTIONAL,	EACH			
		WARNING, REGULATORY, SERVICE, AND				
		STREET SIGNS				
		BATH ST TEMPORARY SIGNS				
		BRIDGE CLOSED SIGNS AND		2.00	0011	01
		TEMPORARY SUPPORTS				
		DETOUR SIGNS		6.00	0011	01
		NO LEFT TURN SIGNS		2.00	0011	01
		OBJECT MARKER SIGNS		4.00	0011	01
		BATH STREET				
		1+30, 18' LT STOP SIGN		1.00	0011	01
		1+45, 18' LT BIKE LANE AHEAD		1.00	0011	01
		2+25, 18' RT BIKE LANE AHEAD		1.00	0011	01
		2+40, 18' RT STOP SIGN		1.00	0011	01
		2+50, 20' RT ONE WAY		2.00	0011	01
<b>Item 201.0610 Total:</b>				<b>20.00</b>		
S007	201.0613	REMOVE AND STOCKPILE LIGHT	EACH			

### Distribution of Quantities

Project Name - Bridge Group 40B - Bath St East  
 Estimate Name - Addendum to Bridge Group 40B - Bath St East  
 R.I. Contract No. - 2019-CB-016  
 FAP Nos: BRO-0778(002)

Item No.	Item Code	Description	UM	Qty.	Pay Code	Seq. No.
S007	201.0613	Cont. STANDARDS				
		BATH ST BRIDGE NO. 778				
		BATH ST			0011	01
Item 201.0613 Total:					**DELETED**	
S008	201.0616	REMOVE AND DISPOSE LIGHT STANDARD FOUNDATIONS	EACH			
		BATH ST BRIDGE NO. 778				
		BATH ST		4.00	0011	01
Item 201.0616 Total:				4.00		
S009	201.0617	REMOVE AND DISPOSE CONDUIT - ALL SIZES	LF			
		BATH ST BRIDGE NO. 778				
		BATH ST		240.00	0011	01
		PROVIDENCE PLACE		100.00	0011	01
Item 201.0617 Total:				340.00		
010	201.9901	REMOVE AND STOCKPILE SHOCK ABSORBING BARRIER MODULES	GRP			
		BATH ST				
		AT PROMENADE ST		1.00	0011	01
Item 201.9901 Total:				1.00		
011	201.9902	REMOVE AND STOCKPILE DRUM BARRICADES	EACH			
		BRIDGE 778				
		BRIDGE 778		5.00	0011	01
Item 201.9902 Total:				5.00		
012	201.9903	REMOVE AND STOCKPILE TEMPORARY CONCRETE BARRIER	LF			
		BATH ST BRIDGE NO. 778				



**Distribution of Quantities**

Project Name - Bridge Group 40B - Bath St East  
 Estimate Name - Addendum to Bridge Group 40B - Bath St East  
 R.I. Contract No. - 2019-CB-016  
 FAP Nos: BRO-0778(002)

Item No.	Item Code	Description	UM	Qty.	Pay Code	Seq. No.
012	201.9903 Cont.	BATH ST BRIDGE NO. 778		120.00	0011	01
				<b>Item 201.9903 Total:</b>	<b>120.00</b>	
013	202.0100	<b>EARTH EXCAVATION</b>	<b>CY</b>			
BATH STREET (PV-1B)						
STA. 1+21 TO 1+37 (PV-1B)				9.33	0011	01
STA. 2+38 TO 2+60 (PV-1B)				12.99	0011	01
PROMENADE STREET (CC-SW)						
10+05, 15' RT (CC-SW)				16.67	0011	01
9+55, 15' RT (CC-SW)				12.00	0011	01
PROMENADE STREET (RHHRC)						
10+09 RT TO 10+36 RT (RHHRC)				1.62	0011	01
9+05 RT TO 9+49 RT (RHHRC)				1.00	0011	01
PROVIDENCE PLACE (CC-SW)						
24+50, 21' LT (CC-SW)				3.67	0011	01
25+05, 25' LT (CC-SW)				6.67	0011	01
25+18 TO 25+31 LT (CC-SW)				4.00	0011	01
OFF-RAMP WHEELCHAIR RAMPS (CC-SW)				4.67	0011	01
PROVIDENCE PLACE (RHHRC)						
24+49 LT TO 24+53 LT (RHHRC)				0.15	0011	01
25+10 LT TO 25+31 LT (RHHRC)				0.92	0011	01
QUANTITY						
ROUNDING				0.31	0011	01
				<b>Item 202.0100 Total:</b>	<b>74.00</b>	
014	203.0100	<b>STRUCTURAL EXCAVATION EARTH</b>	<b>CY</b>			
BATH STREET BRIDGE NO. 778						
BATH STREET BRIDGE NO. 778				70.00	0011	01
				<b>Item 203.0100 Total:</b>	<b>70.00</b>	
015	203.0700	<b>PERVIOUS FILL</b>	<b>CY</b>			
BRIDGE 778						

**Distribution of Quantities**

Project Name - Bridge Group 40B - Bath St East  
 Estimate Name - Addendum to Bridge Group 40B - Bath St East  
 R.I. Contract No. - 2019-CB-016  
 FAP Nos: BRO-0778(002)

Item No.	Item Code	Description	UM	Qty.	Pay Code	Seq. No.
015	203.0700	Cont. BRIDGE 778		56.00	0011	01
<b>Item 203.0700 Total:</b>				<b>56.00</b>		
016	204.0100	<b>TRIMMING AND FINE GRADING</b>	<b>SY</b>			
		BATH STREET (PV-1B)				
		STA. 1+21 TO 1+37 (PV-1B)		28.00	0011	01
		STA. 2+38 TO 2+60 (PV-1B)		39.00	0011	01
		PROMENADE STREET (CC-SW)				
		10+05, 15' RT (CC-SW)		50.00	0011	01
		9+55, 15' RT (CC-SW)		36.00	0011	01
		PROMENADE STREET (L & S)				
		10+14 TO 10+37 (L & S)		11.00	0011	01
		9+12 TO 9+39 (L & S)		12.00	0011	01
		PROMENADE STREET (RHHRC)				
		10+09 RT TO 10+36 RT (RHHRC)		4.88	0011	01
		9+05 RT TO 9+49 RT (RHHRC)		2.99	0011	01
		PROVIDENCE PLACE (CC-SW)				
		24+50, 21' LT (CC-SW)		11.00	0011	01
		25+05, 25' LT (CC-SW)		20.00	0011	01
		25+18 TO 25+31 LT (CC-SW)		12.00	0011	01
		OFF-RAMP WHEELCHAIR RAMPS (CC-SW)		14.00	0011	01
		PROVIDENCE PLACE (RHHRC)				
		24+49 LT TO 24+53 LT (RHHRC)		0.44	0011	01
		25+10 LT TO 25+31 LT (RHHRC)		2.77	0011	01
		QUANTITY				
		ROUNDING		0.92	0011	01
<b>Item 204.0100 Total:</b>				<b>245.00</b>		
017	209.9901	<b>SEDIMENTATION CONTROL FOR CATCH BASINS</b>	<b>EACH</b>			
		BATH ST BRIDGE NO. 778				
		PROMENADE STREET		2.00	0011	01

**Distribution of Quantities**

Project Name - Bridge Group 40B - Bath St East  
 Estimate Name - Addendum to Bridge Group 40B - Bath St East  
 R.I. Contract No. - 2019-CB-016  
 FAP Nos: BRO-0778(002)

Item No.	Item Code	Description	UM	Qty.	Pay Code	Seq. No.
017	209.9901 Cont.	PROVIDENCE PLACE		4.00	0011	01
				<b>Item 209.9901 Total:</b>		<b>6.00</b>
018	211.9901	<b>TEMPORARY ACCESS/WORK PLATFORM</b>	<b>LS</b>			
		BATH STREET BRIDGE NO. 778				
		BATH STREET BRIDGE NO. 778		1.00	0011	01
				<b>Item 211.9901 Total:</b>		<b>1.00</b>
019	212.2000	<b>CLEANING AND MAINTENANCE OF</b>	<b>LS</b>			
		<b>EROSION CONTROLS</b>				
		BATH ST BRIDGE NO. 778				
		AS DIRECTED BY THE ENGINEER		1.00	0011	01
				<b>Item 212.2000 Total:</b>		<b>1.00</b>
020	302.0100	<b>GRAVEL BORROW SUBBASE COURSE</b>	<b>CY</b>			
		BATH STREET (PV-1B)				
		STA. 1+21 TO 1+37 (PV-1B)		9.33	0011	01
		STA. 2+38 TO 2+60 (PV-1B)		12.99	0011	01
		PROMENADE STREET (CC-SW)				
		10+05, 15' RT (CC-SW)		11.11	0011	01
		9+55, 15' RT (CC-SW)		8.00	0011	01
		PROMENADE STREET (RHHRC)				
		10+09 RT TO 10+36 RT (RHHRC)		1.62	0011	01
		9+05 RT TO 9+49 RT (RHHRC)		1.00	0011	01
		PROVIDENCE PLACE (CC-SW)				
		24+50, 21' LT (CC-SW)		2.44	0011	01
		25+05, 25' LT (CC-SW)		4.44	0011	01
		25+18 TO 25+31 LT (CC-SW)		2.67	0011	01
		OFF-RAMP WHEELCHAIR RAMPS		3.11	0011	01
		(CC-SW)				
		PROVIDENCE PLACE (RHHRC)				
		24+49 LT TO 24+53 LT (RHHRC)		0.15	0011	01
		25+10 LT TO 25+31 LT (RHHRC)		0.92	0011	01

**Distribution of Quantities**

Project Name - Bridge Group 40B - Bath St East  
 Estimate Name - Addendum to Bridge Group 40B - Bath St East  
 R.I. Contract No. - 2019-CB-016  
 FAP Nos: BRO-0778(002)

Item No.	Item Code	Description	UM	Qty.	Pay Code	Seq. No.
020	302.0100	Cont. QUANTITY				
		ROUNDING		0.22	0011	01
				<b>Item 302.0100 Total:</b>		<b>58.00</b>
021	401.2100	<b>MODIFIED CLASS 12.5 HMA</b>	<b>TON</b>			
		BATH STREET (PV-1A)				
		1+21 TO 1+37 (PV-1A)		13.05	0011	01
		2+38 TO 2+60 (PV-1A)		13.05	0011	01
		BATH STREET (PV-1B)				
		STA. 1+21 TO 1+37 (PV-1B)		6.89	0011	01
		STA. 2+38 TO 2+60 (PV-1B)		9.60	0011	01
		PROMENADE STREET (PV -P)				
		STA. 8+85 TO 11+05 (PV -P)		90.51	0011	01
		PROVIDENCE PLACE (PV -P)				
		STA. 22+65 TO 27+40 (PV -P)		268.96	0011	01
		QUANTITY				
		ROUNDING		0.94	0011	01
				<b>Item 401.2100 Total:</b>		<b>403.00</b>
022	403.0300	<b>ASPHALT EMULSION TACK COAT</b>	<b>SY</b>			
		BATH STREET (PV-1A)				
		1+21 TO 1+37 (PV-1A)		106.00	0011	01
		2+38 TO 2+60 (PV-1A)		106.00	0011	01
		BATH STREET (PV-1B)				
		STA. 1+21 TO 1+37 (PV-1B)		56.00	0011	01
		STA. 2+38 TO 2+60 (PV-1B)		78.00	0011	01
		PROMENADE STREET (PV -P)				
		STA. 8+85 TO 11+05 (PV -P)		700.00	0011	01
		PROMENADE STREET (RHHRC)				
		10+09 RT TO 10+36 RT (RHHRC)		4.88	0011	01
		9+05 RT TO 9+49 RT (RHHRC)		2.99	0011	01
		PROVIDENCE PLACE (PV -P)				
		STA. 22+65 TO 27+40 (PV -P)		2,080.00	0011	01

**Distribution of Quantities**

Project Name - Bridge Group 40B - Bath St East  
 Estimate Name - Addendum to Bridge Group 40B - Bath St East  
 R.I. Contract No. - 2019-CB-016  
 FAP Nos: BRO-0778(002)

Item No.	Item Code	Description	UM	Qty.	Pay Code	Seq. No.
022	403.0300	Cont.				
		PROVIDENCE PLACE (RHHRC)				
		24+49 LT TO 24+53 LT (RHHRC)		0.44	0011	01
		25+10 LT TO 25+31 LT (RHHRC)		2.77	0011	01
		QUANTITY				
		ROUNDING		0.92	0011	01
<b>Item 403.0300 Total:</b>				<b>3,138.00</b>		

### Distribution of Quantities

Project Name - Bridge Group 40B - Bath St East  
 Estimate Name - Addendum to Bridge Group 40B - Bath St East  
 R.I. Contract No. - 2019-CB-016  
 FAP Nos: BRO-0778(002)

Item No.	Item Code	Description	UM	Qty.	Pay Code	Seq. No.
023	601.0200	<b>CLASS XX PORTLAND CEMENT CONCRETE</b>	<b>CY</b>			
		BATH STREET (PV-1B)				
		STA. 1+21 TO 1+37 (PV-1B)			0011	01
		STA. 2+38 TO 2+60 (PV-1B)			0011	01
		PROMENADE STREET (RHHRC)				
		10+09 RT TO 10+36 RT (RHHRC)		1.35	0011	01
		9+05 RT TO 9+49 RT (RHHRC)		0.83	0011	01
		PROVIDENCE PLACE (RHHRC)				
		24+49 LT TO 24+53 LT (RHHRC)		0.12	0011	01
		25+10 LT TO 25+31 LT (RHHRC)		0.77	0011	01
		QUANTITY				
		ROUNDING		0.93	0011	01
<b>Item 601.0200 Total:</b>				<b>4.00</b>		
024	707.0950	<b>ADJUST TELEPHONE MANHOLE TO GRADE</b>	<b>EACH</b>			
		PROVIDENCE PLACE				
		24+50 LT		1.00	0011	01
<b>Item 707.0950 Total:</b>				<b>1.00</b>		
025	707.0955	<b>ADJUST ELECTRICAL MANHOLE TO GRADE</b>	<b>EACH</b>			
		PROVIDENCE PLACE				
		23+25 LT		1.00	0011	01
		25+90 LT		1.00	0011	01
<b>Item 707.0955 Total:</b>				<b>2.00</b>		
026	707.1000	<b>ADJUST SANITARY MANHOLE</b>	<b>EACH</b>			
		PROMENADE ST				
		10+05 LT		1.00	0011	01
		10+05 RT		1.00	0011	01
		10+25 RT		1.00	0011	01
		9+95 LT		1.00	0011	01
		PROVIDENCE PLACE				
		23+50 RT		1.00	0011	01

### Distribution of Quantities

Project Name - Bridge Group 40B - Bath St East  
 Estimate Name - Addendum to Bridge Group 40B - Bath St East  
 R.I. Contract No. - 2019-CB-016  
 FAP Nos: BRO-0778(002)

Item No.	Item Code	Description	UM	Qty.	Pay Code	Seq. No.
S074	T05.0100	Cont. 18.2.0				
		BATH ST BRIDGE NO. 778				
		BATH ST		4.00	0011	01
		PROVIDENCE PLACE		1.00	0011	01
<b>Item T05.0100 Total:</b>				<b>5.00</b>		
S075	T05.0400	<b>BREAK INTO EXISTING HANDHOLE</b>	<b>EACH</b>			
		BATH ST BRIDGE NO. 778				
		PROVIDENCE PLACE		1.00	0011	01
<b>Item T05.0400 Total:</b>				<b>1.00</b>		
S076	T05.9901	QUAZITE HANDHOLE	EACH			
		BATH ST BRIDGE NO. 778				
		BATH ST			0011	01
<b>Item T05.9901 Total:</b>				<b>**DELETED**</b>		
077	T06.1020	<b>2 IN. RIGID STEEL CONDUIT - UNDERGROUND</b>	<b>LF</b>			
		BATH ST BRIDGE NO. 778				
		PROMENADE ST		60.00	0011	01
		PROVIDENCE PLACE		70.00	0011	01
<b>Item T06.1020 Total:</b>				<b>130.00</b>		
S078	T06.5430	<b>3 INCH SCHEDULE 80 POLYVINYL CHLORIDE PLASTIC CONDUIT - UNDER EXISTING PAVEMENT</b>	<b>LF</b>			
		BATH ST BRIDGE NO. 778				
		BATH ST		100.00	0011	01
<b>Item T06.5430 Total:</b>				<b>100.00</b>		
S079	T06.7044	<b>EXPANSION COUPLING WITH TRANSVERSE MOTION 4" PVC</b>	<b>EACH</b>			
		BATH ST BRIDGE NO. 778				

### Distribution of Quantities

Project Name - Bridge Group 40B - Bath St East  
 Estimate Name - Addendum to Bridge Group 40B - Bath St East  
 R.I. Contract No. - 2019-CB-016  
 FAP Nos: BRO-0778(002)

Item No.	Item Code	Description	UM	Qty.	Pay Code	Seq. No.
S096	T20.2020	Cont. STANDARD 20.1.0				
		PROVIDENCE PLACE				
		24+40		1.00	0011	01
<b>Item T20.2020 Total:</b>				<b>1.00</b>		
S097	T20.2044	EPOXY RESIN PAVEMENT MARKING - HELMETED BICYCLIST SYMBOL WITH ARROW	EACH			
		PROMENADE ST				
		09+50 LT		1.00	0011	01
		PROVIDENCE PLACE				
		23+50 RT		1.00	0011	01
		25+50 RT		1.00	0011	01
<b>Item T20.2044 Total:</b>				<b>3.00</b>		
S098	T20.9901	FAST DRYING WATERBORNE PAVEMENT MARKING - SHARED LANE	EACH			
		TEMPORARY TRAFFIC CONTROL				
		PROMENADE ST		2.00	0011	01
		PROVIDENCE PLACE		3.00	0011	01
<b>Item T20.9901 Total:</b>				<b>5.00</b>		
S099	T20.9902	BIKE LANE EPOXY RESIN INTERSECTION CROSSING PAVEMENT MARKINGS - GREEN	LF			
		BATH ST BRIDGE NO. 778				
		PROMENADE ST		6.00	0011	01
		PROVIDENCE PLACE		20.00	0011	01
<b>Item T20.9902 Total:</b>				<b>26.00</b>		
100	201.9904	REMOVE AND STOCKPILE LIGHT STANDARDS	EACH			
		BATH STREET				
		BATH STREET BRIDGE		5.00	0011	01



### Distribution of Quantities

Project Name - Bridge Group 40B - Bath St East  
 Estimate Name - Addendum to Bridge Group 40B - Bath St East  
 R.I. Contract No. - 2019-CB-016  
 FAP Nos: BRO-0778(002)

Item No.	Item Code	Description	UM	Qty.	Pay Code	Seq. No.
100	201.9904	Cont.				
		Item 201.9904 Total:		5.00		
101	203.0650	<b>CRUSHED STONE FILL UNDER STRUCTURES CY</b>				
		BRIDGE 778				
		BRIDGE 778		4.00	0011	01
		Item 203.0650 Total:		4.00		
102	401.1000	<b>CLASS 19.0 HMA</b>	<b>TON</b>			
		BATH STREET (PV-1A)				
		1+21 TO 1+37 (PV-1A)		9.90	0011	01
		2+38 TO 2+60 (PV-1A)		9.90	0011	01
		BATH(PV-1B) (PV-1B)				
		STA. 1+21 (PV-1B) (PV-1B)		10.45		
		STA. 2+38 (PV-1B) (PV-1B)		14.56		
		QUANTITY				
		ROUNDING		0.19	0011	01
		Item 401.1000 Total:		45.00		
103	T05.0320	<b>PULL BOX ON STRUCTURE TYPE V</b>	<b>EACH</b>			
		<b>STANDARD 18.6.3</b>				
		BATH STREET				
		BATH STREET BRIDGE		2.00	0011	01
		Item T05.0320 Total:		2.00		
104	T06.5220	<b>2 INCH SCHEDULE 80 POLYVINYL</b>	<b>LF</b>			
		<b>CHLORIDE PLASTIC CONDUIT -</b>				
		<b>UNDERGROUND</b>				
		BATH STREET				
		BATH STREET BRIDGE		240.00	0011	01
		Item T06.5220 Total:		240.00		

## Assembly Summary

Project Name:

Estimate Name:

R.I. Contract No.:

FAP Nos.:

Item Code	Description	Depth	Factor	Qty
<b><u>Assembly: PAVEMENT TYPE P-1 OVER BRIDGE APPROACH SLABS (PV-1A) (Unit: SY Default Quantity: 106.00)</u></b>				
201.0407	REMOVE AND DISPOSE PAVEMENT AND RIGID BASE		1.00000	
401.1000	CLASS 19.0 HMA	3" average	0.18678	
401.2100	MODIFIED CLASS 12.5 HMA	4"	0.24620	
403.0300	ASPHALT EMULSION TACK COAT		2.00000	
	BATH STREET (PV-1A)			
	1+21 TO 1+37 (PV-1A)			53.00
	2+38 TO 2+60 (PV-1A)			53.00
<b><u>Assembly: PAVEMENT TYPE P-1 OUTSIDE BRIDGE APPROACH SLABS (PV-1B) (Unit: SY Default Quantity: 67.00)</u></b>				
201.0407	REMOVE AND DISPOSE PAVEMENT AND RIGID BASE	-	1.00000	
202.0100	EARTH EXCAVATION	12"	0.33330	
204.0100	TRIMMING AND FINE GRADING	-	1.00000	
302.0100	GRAVEL BORROW SUBBASE COURSE	12"	0.33330	
401.1000	CLASS 19.0 HMA	6"	0.37350	
401.2100	MODIFIED CLASS 12.5 HMA	4"	0.24620	
403.0300	ASPHALT EMULSION TACK COAT	-	2.00000	
	BATH(PV-1B) (PV-1B)			
	STA. 1+21 (PV-1B) (PV-1B)			28.00
	STA. 2+38 (PV-1B) (PV-1B)			39.00
<b><u>Assembly: REMOVE AND RESET CURB (RHHRC) (Unit: LF Default Quantity: 100.00)</u></b>				
201.0407	REMOVE AND DISPOSE PAVEMENT AND RIGID BASE	-	0.11111	
202.0100	EARTH EXCAVATION	-	0.03704	
204.0100	TRIMMING AND FINE GRADING	-	0.11111	
302.0100	GRAVEL BORROW SUBBASE COURSE	-	0.03704	
403.0300	ASPHALT EMULSION TACK COAT	-	0.11111	
601.0200	CLASS XX PORTLAND CEMENT CONCRETE	10"	0.03086	
906.0700	REMOVE, HANDLE, HAUL TRIM RESET CURB EDGING, STRAIGHT, CIRCULAR ALL TYPES	-	1.00000	
	PROMENADE STREET (RHHRC)			
	9+05 RT TO 9+49 RT (RHHRC)			27.00
	10+09 RT TO 10+36 RT (RHHRC)			44.00
	PROVIDENCE PLACE (RHHRC)			
	24+49 LT TO 24+53 LT (RHHRC)			4.00
	25+10 LT TO 25+31 LT (RHHRC)			25.00