

January 24, 2019

STATE OF RHODE ISLAND AND PROVIDENCE PLANTATION
DEPARTMENT OF ADMINISTRATION

DIVISION OF PURCHASES BID NO. 7598556

RHODE ISLAND DEPARTMENT OF TRANSPORTATION

RHODE ISLAND CONTRACT NO.2019-CB-011

FEDERAL-AID PROJECT NO. FAP Nos: BHO-0243(002)

Statewide Bridge Repairs Contract 4 - Amtrak Bridges

Statewide

CITY/TOWN OF Warwick

COUNTY OF KENT

NOTICE TO PROSPECTIVE BIDDERS

ADDENDUM NO. 1 Prospective bidders and all concerned are hereby notified of the following changes in the Plans, Specifications, Proposal and Distribution of Quantities for this contract. These changes shall be incorporated in the Plans, Specifications, Proposal and Distribution of Quantities, and shall become an integral part of the Contract Documents.

A. Specification Change/Addition

1. Page JS-i

Remove Page JS-i in its entirety and replace with revised Page JS-i (R-1) attached to this Addendum No. 1.

The title of Code 410.9901 has changed to "MICRO MILLING AND FILL RUMBLE STRIP WITH CLASS 9.5 HOT MIX ASPHALT".

2. Page JS-ii

Remove Page JS-ii in its entirety and replace with revised Page JS-ii (R-1) attached to this Addendum No. 1

Code 910.9901 "CUT BITUMINOUS RUMBLE STRIPS" has been added.

3. Page JS-19

Remove Page JS-19 in its entirety and replace it with revised Page JS-19 (R-1) attached to this Addendum No. 1.

Code 410.9901 has been revised.

4. Page JS-44a and JS-44b

Add new pages JS-44a and JS-44b attached to this Addendum No. 1.

Code 910.9901 "CUT BITUMINOUS RUMBLE STRIPS" has been added.

B. Distribution of Quantities

1. Distribution of Quantities

Remove the Distribution of Quantities in its entirety and replace with the revised Distribution of Quantities attached to this Addendum No. 1.

Quantities for the following items have been revised:

- 922.0100 TEMPORARY CONSTRUCTION SIGNS STANDARD 29.1.0 AND 27.1.1
- 923.0105 DRUM BARRICADE STANDARD 26.2.0
- 923.0200 FLUORESCENT TRAFFIC CONES STANDARD 26.1.0
- 926.0121 UNANCHORED PRECAST CONCRETE BARRIER FOR TEMPORARY TRAFFIC CONTROL STANDARD 40.5.0
- 928.9901 TRUCK MOUNTED ATTENUATOR (TMA) WITH TRUCK MOUNTED FLASHING ARROW BOARD (TMFAB)
- 931.0110 CLEANING AND SWEEPING PAVEMENT
- 935.0400 REMOVING BITUMINOUS PAVEMENT BY MICRO MILLING
- T20.0006 6 INCH WHITE FAST-DRYING WATERBORNE PAVEMENT MARKING PAINT
- T20.0012 12 INCH WHITE FAST-DRYING WATERBORNE PAVEMENT MARKING PAINT
- T20.0106 6 INCH YELLOW FAST-DRYING WATERBORNE PAVEMENT MARKING PAINT
- T20.1000 REMOVE EXISTING PAVEMENT MARKINGS
- T20.2006 6 INCH EPOXY RESIN PAVEMENT MARKINGS WHITE
- T20.2012 12 INCH EPOXY RESIN PAVEMENT MARKINGS WHITE
- T20.2016 6 INCH EPOXY RESIN PAVEMENT MARKINGS YELLOW

The Item number for FRICTION COURSE has been revised from 401.9901 to 402.9901

Item 401.9901 PAY ADJUSTMENTS has been added

The Unit of Measure for Item 410.9901 has been revised from LF to SY and the title has changed to "MICRO MILLING AND FILL RUMBLE STRIP WITH CLASS 9.5 HOT MIX ASPHALT".

Item 910.9901 CUT BITUMINOUS RUMBLE STRIPS has been added

C. Drawings/Plans - Change/Addition

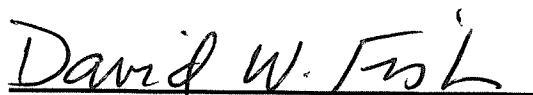
1. Sheet 73 – Maintenance & Protection of Traffic Plan No. 1

Remove Sheet 73 in its entirety and replace with revised Sheet 73 (R-1) attached to this Addendum No. 1.

2. Sheet 75 – Maintenance & Protection of Traffic Plan No. 3

Remove Sheet 75 in its entirety and replace with revised Sheet 75 (R-1) attached to this Addendum No. 1.

3. Sheet 76 – Maintenance & Protection of Traffic Plan No. 4
Remove Sheet 76 in its entirety and replace with revised Sheet 76 (R-1) attached to this Addendum No. 1.
4. Sheet 77 – Maintenance & Protection of Traffic Plan No. 5
Remove Sheet 77 in its entirety and replace with revised Sheet 77 (R-1) attached to this Addendum No. 1.
5. Sheet 78 – Maintenance & Protection of Traffic Plan No. 6
Remove Sheet 78 in its entirety and replace with revised Sheet 78 (R-1) attached to this Addendum No. 1.
6. Sheet 79 – Maintenance & Protection of Traffic Plan No. 7
Remove Sheet 79 in its entirety and replace with revised Sheet 79 (R-1) attached to this Addendum No. 1.
7. Sheet 80 – Maintenance & Protection of Traffic Plan No. 8
Remove Sheet 80 in its entirety and replace with revised Sheet 80 (R-1) attached to this Addendum No. 1.
8. Sheet 81 – Maintenance & Protection of Traffic Plan No. 9
Remove Sheet 81 in its entirety and replace with revised Sheet 81 (R-1) attached to this Addendum No. 1.



RI Department of Transportation

Administrator, Division of Project Management

SPECIFICATIONS – JOB SPECIFIC

INDEX

<u>CODE</u>	<u>Title</u>	<u>Page</u>
105.02	Plans and Shop Drawings	JS-1
108.01	Prosecution and Progress - Subletting of Contract	JS-4
108.1000	Prosecution and Progress	JS-5
109.07	Partial Payment of Lump Sum Items	JS-6
109.09	Measurement and Payment – Acceptance and Final Payment	JS-7
201.99	Site Preparation – Project Wide	JS-8
209.9901	Sedimentation Control for Catch Basins	JS-10
212.2000	Maintenance and Cleaning of Erosion and Pollution Controls	JS-13
401.9901	Pay Adjustments	JS-14
402.9901	Friction Course	JS-15
410.9901	Micro Milling and Fill Rumble Strip with Class 9.5 Hot Mix Asphalt Material	JS-19
803.9910	Remove & Dispose Portion of Existing Concrete Substructure	JS-20
803.9920	Remove & Dispose Portion of Existing Concrete Superstructure	JS-20
803.9925	Remove and Dispose Existing Steel Bearing – Bridge No.834	JS-24
803.9930	Temporary Support of Existing Parapet, Safety Walk, and Deck – Bridge No. 772	JS-26
805.9910	Temporary Shoring and Bracing – Backwall Repair	JS-28
824.9920	Steel Beam / Girder Repairs – Bridge No. 243	JS-30

824.9921	Steel Beam / Girder Repairs – Bridge No. 772	JS-30
824.9922	Cover Plate End Repair – Bridge No. 243	JS-33
824.9925	End Diaphragm Connection Repair – Bridge No. 243	JS-35
824.9930	Temporary Traffic Plate – Bridge No. 834	JS-37
824.9940	Temporary Jacking and Shoring of Beams – Bridge No. 834	JS-39
825.9920	Repainting Existing Structural Steel - Bridge No. 243	JS-43
825.9921	Repainting Existing Structural Steel - Bridge No. 772	JS-43
830.99	Removal and Resetting of Bridge Railing / Protective Barrier/Bridge-Mounted Guardrail	JS-44
910.9901	Cut Bituminous Rumble Strips	JS-44a
937.1000	Maintenance and Movement of Traffic Protection	JS-45
938.1000	Price Adjustments	JS-46
L02.1000	Seeding Failure to Comply	JS-47

**CODE 410.9901
MICRO MILLING AND FILL RUMBLE STRIP
WITH CLASS 9.5 HOT MIX ASPHALT**

DESCRIPTION:

This work consists of micro milling and filling the existing rumble strips on Route 4 for crossover traffic to the limits shown on the Maintenance and Protection of Traffic Plans and as directed by the Engineer. All work and materials shall be in accordance with the Rhode Island Standard Specification for Road and Bridge Construction, (Amended 2018) and all revisions, these Special Provisions, and as described elsewhere in the Contract Documents and as directed by the Engineer.

MATERIALS:

The fill material shall conform to the requirements for Class 9.5 Hot Mix Asphalt (HMA) as set forth in Section 401 of the Standard Specification.

CONSTRUCTION METHODS:

The Contractor will micro mill 1" deep and 24" wide area along the existing rumble strip, fill and compact the milled area with 1" of Class 9.5 HMA so that the area is flush with the existing roadway pavement when complete. The rumble strip area shall be free of loose asphalt, debris and excess moisture. The compaction shall be done using a vibratory plate compactor or other appropriate equipment.

METHOD OF MEASUREMENT:

"ITEM CODE 410.9901 MICRO MILLING AND FILL RUMBLE STRIP WITH CLASS 9.5 HOT MIX ASPHALT" will be measured for payment by the "Square Yard" of rumble strip actually milled and filled in accordance with this Special Provision and elsewhere in the Contract Documents and/or as directed by the Engineer.

BASIS OF PAYMENT:

The accepted quantity of "ITEM CODE 410.9901 MICRO MILLING AND FILL RUMBLE STRIP WITH CLASS 9.5 HOT MIX ASPHALT" will be paid for at the contract unit price per "Square Yard" as listed in the Proposal. The price so-stated will constitute full and complete compensation for all labor, materials, tools, equipment, and all incidentals required to finish the work as described in this Special Provisions and elsewhere in the Contract Documents, complete in place and accepted by the Engineer.

**CODE 910.9901
CUT BITUMINOUS RUMBLE STRIPS**

DESCRIPTION:

This work consists of constructing rumble strips on paved highway shoulders by cutting ½ - inch deep depressions into finished bituminous concrete surfaces. All work shall be performed in accordance with the Rhode Island Department of Transportation Standard Specifications for Road and Bridge Construction, (Amended March 2018) and all revisions, these Special Provisions, and as described elsewhere in the Contract Document and as directed by the Engineer

EQUIPMENT:

The equipment shall consist of a rotary cutting head with a maximum outside diameter of 24 inches and will be a minimum of 16 inches long. The cutting head shall have the cutting tips arranged in such a pattern as to provide a relatively smooth cut (approximately 1/16 of an inch between peaks and valleys). The cutting head(s) shall be on its own independent suspension from that of the power unit to allow the tool to self-align with the slope of the shoulder and/or any irregularities in the shoulder surface.

The rumble strips shall have finished dimensions of 7 inches (+/- ½ - inch) wide in the direction of travel and shall be a minimum of 16 inches long measured perpendicular to the direction of travel. The depression shall have a concave circular shape with a minimum ½ - inch depth at center (maximum allowable depth is 5/8 - inch). The rumble strip shall be placed in relation to the roadway according to the patterns shown in the plans. At the end of each working day, all equipment shall be moved to a location where it does not present a hazard to traffic.

CONSTRUCTION METHODS:

The cutting tool shall be equipped with guides to provide consistent alignment of each cut in relation to the roadway and to provide uniformity and consistency throughout the project. Excess pavement material from the operation shall be removed immediately and disposed at an approved off-site location. The pavement shall be cleaned by method of sweeping in accordance with Section 931 of this specification within the same lane closure setup as for grinding the rumble strip. The Contractor shall set up its traffic control according to the Manual on Uniform Traffic Control Devices (MUTCD) for mobile operation on multi-lane roads.

The Contractor shall demonstrate to the Engineer the ability to achieve the desired surface inside each depression without tearing and snagging the asphalt prior to beginning the work.

METHOD OF MEASUREMENT:

"ITEM CODE 910.9901 Cut Bituminous Rumble Strips" will be measured for payment by the "Linear Foot" of rumble strip actually installed in accordance with this Special Provision and elsewhere in the Contract Documents and/or as directed by the Engineer. The 5'-0" space between cuts shown on the detail will be included in the linear feet of measurement for this item.

BASIS OF PAYMENT:

The accepted quantity of "ITEM CODE 910.9901 Cut Bituminous Rumble Strips" will be paid for at the contract unit price per "Linear Foot" as listed in the Proposal. The price so-stated will constitute full and complete compensation for all labor, materials, tools, equipment, and all incidentals required to finish the work as described in this Special Provision and elsewhere in the Contract Documents, complete in place and accepted by the Engineer.

Table of Contents - Distribution of Quantities

Project Name - Statewide Bridge Repairs Contract 4 - Amtrak Bridges
 Estimate Name - Statewide Bridge Repair Contract 4 (including AMTRAK Crossings) -
 Addendum 1
 R.I. Contract No. - 2019-CB-011
 FAP Nos: BHO-0243(002)

ItemCode	Description	Page
201.0403	REMOVE AND DISPOSE SIDEWALKS	1
201.0409	REMOVE AND DISPOSE FLEXIBLE PAVEMENT	1
201.0430	REMOVE AND DISPOSE CONCRETE MEDIAN BARRIER	1
203.0100	STRUCTURAL EXCAVATION EARTH	1
203.0650	CRUSHED STONE FILL UNDER STRUCTURES	2
204.0100	TRIMMING AND FINE GRADING	2
209.9901	SEDIMENTATION CONTROL FOR CATCH BASINS	2
212.2000	CLEANING AND MAINTENANCE OF EROSION CONTROLS	2
302.0100	GRAVEL BORROW SUBBASE COURSE	3
401.1000	CLASS 19.0 HMA	3
401.3000	CLASS 9.5 HMA	3
401.3100	MODIFIED CLASS 9.5 HMA	3
401.9901	PAY ADJUSTMENTS	4
402.9901	FRICTION COURSE	4
403.0300	ASPHALT EMULSION TACK COAT	4
410.9901	MICRO MILLING AND FILL RUMBLE STRIP WITH CLASS 12.5 HOT MIX ASPHALT	4
603.1000	CONTROLLED LOW STRENGTH MATERIAL	5
708.9040	CLEANING AND FLUSHING PIPE ALL SIZES	5
708.9041	CLEANING CATCH BASINS ALL TYPES AND SIZES	5
803.0400	CLEANING BRIDGE BEAM SEATS	6
803.0500	TEMPORARY DECK UNDERSIDE AND SIDE PROTECTIVE SHIELDING	6
803.9910	REMOVE AND DISPOSE PORTION OF EXISTING CONCRETE SUBSTRUCTURE	6
803.9920	REMOVE AND DISPOSE PORTION OF EXISTING CONCRETE SUPERSTRUCTURE	6
803.9925	REMOVE AND DISPOSE EXISTING STEEL BEARING BRIDGE NO. 834	7
803.9930	TEMPORARY SUPPORT OF EXISTING PARAPET, SAFETYWALK, AND DECK - BRIDGE NO. 772	7
805.9910	TEMPORARY SHORING AND BRACING BEHIND BACKWALLS	7
808.0323	CONCRETE SUBSTRUCTURE CLASS HP 3/4" PARAPETS	8
808.0505	CONCRETE SUBSTRUCTURE CLASS HP 3/4" WALL STEMS	8
808.0508	CONCRETE SUBSTRUCTURE CLASS XX 3/4" APPROACH SLABS	8
808.0601	CONCRETE SUBSTRUCTURE CLASS HP 3/4" PIERS, COL, CAP	8
808.0602	CONCRETE SUBSTRUCTURE CLASS HP 3/4" BACKWALLS	9
808.1501	CONCRETE SUPERSTRUCTURE CLASS HP 3/4" BRIDGE DECKS	9
808.1502	CONCRETE SUPERSTRUCTURE CLASS HP 3/4" BRIDGE SIDEWALKS	9
808.1503	CONCRETE SUPERSTRUCTURE CLASS HP 3/4" PARAPETS	9
808.1640	PREFORMED POLYETHYLENE FOAM JOINT FILLER 1/2"	10
808.1642	PREFORMED POLYETHYLENE FOAM JOINT FILLER 1"	10
808.1646	PREFORMED POLYETHYLENE FOAM JOINT FILLER 2"	10
808.1675	POLYURETHANE ELASTOMERIC JOINT SEALANT	11
808.1810	CONCRETE SURFACE FINISHING RUBBED REGULAR	11
810.0210	GALVANIZED BAR REINFORCEMENT GRADE 60	11
810.0702	WELDED WIRE FABRIC (GALVANIZED)	12
811.0200	SUB PAVEMENT DRAINS	12
813.9910	PREFABRICATED WATERPROOFING SHEET MEMBRANE	12
817.9901	REPAIRS TO STRUCTURAL CONCRETE MASONRY (PATCHING MORTAR)	13
817.9902	REPAIRS TO STRUCTURAL CONCRETE MASONRY (FORM AND CAST IN PLACE)	13
818.9901	PORTLAND CEMENT CONCRETE DECK REPAIRS	13
819.0800	DRILL AND GROUT REINFORCING DOWELS	13
820.0110	CONCRETE SURFACE TREATMENT (PROTECTIVE COATING)	14
821.1690	SAW & SEALING JOINTS IN BITUMINOUS CONCRETE PAVEMENT	14
823.1750	ASPHALTIC EXPANSION JOINT SYSTEM	14
823.1760	STRIP SEAL EXPANSION JOINT ASSEMBLIES	14
824.9920	STEEL BEAM / GIRDER REPAIRS - BRIDGE NO. 243	15

Table of Contents - Distribution of Quantities

Project Name - Statewide Bridge Repairs Contract 4 - Amtrak Bridges
 Estimate Name - Statewide Bridge Repair Contract 4 (including AMTRAK Crossings) -
 Addendum 1
 R.I. Contract No. - 2019-CB-011
 FAP Nos: BHO-0243(002)

ItemCode	Description	Page
824.9921	STEEL BEAM / GIRDER REPAIRS - BRIDGE NO. 772	15
824.9922	COVER PLATE END REPAIR - BRIDGE NO. 243	15
824.9925	END DIAPHRAGM CONNECTION REPAIR - BRIDGE NO. 243	15
824.9930	TEMPORARY TRAFFIC PLATE - BRIDGE NO. 834	15
824.9940	TEMPORARY JACKING AND SHORING OF BEAM - BRIDGE NO 834	16
825.9920	REPAINTING EXISTING STRUCTURAL STEEL - BRIDGE NO. 243	16
825.9921	REPAINTING EXISTING STRUCTURAL STEEL - BRIDGE NO. 772	16
828.0210	SLIDING BEARINGS STANDARD EXPANSION	16
834.0112	VERTICAL FACE GRANITE CURB CURVED 10'' REVEAL	16
834.0131	VERTICAL FACE GRANITE CURB STRAIGHT 7'' REVEAL	16
834.0212	SLOPE FACE GRANITE CURB STRAIGHT 10'' X 15''	17
839.0100	PARTIAL-DEPTH REMOVAL AND DISPOSAL OF BITUMINOUS PAVEMENT FROM CONCRETE BRIDGE DECKS	17
839.0200	FULL DEPTH REMOVAL AND DISPOSAL OF BITUMINOUS PAVEMENT FROM CONCRETE BRIDGE DECKS	17
905.0110	PORTLAND CEMENT SIDEWALK MONOLITHIC STANDARD 43.1.0	18
906.0700	REMOVE, HANDLE, HAUL TRIM RESET CURB EDGING, STRAIGHT, CIRCULAR ALL TYPES	18
910.9901	CUT BITUMINOUS RUBBLE STRIPS	18
914.5010	FLAGPERSONS	18
914.5020	FLAGPERSONS - OVERTIME	18
916.0600	SHOCK ABSORBING BARRIER MODULES	19
916.0650	REMOVE, RELOCATE AND RESET SHOCK ABSORBING BARRIER MODULES	19
922.0100	TEMPORARY CONSTRUCTION SIGNS STANDARD 29.1.0 AND 27.1.1	19
923.0105	DRUM BARRICADE STANDARD 26.2.0	22
923.0120	PLASTIC PIPE BARRICADE STANDARD 26.3.0	22
923.0200	FLUORESCENT TRAFFIC CONES STANDARD 26.1.0	23
924.0113	ADVANCE WARNING ARROW PANEL	23
925.0112	PORTABLE CHANGEABLE MESSAGE SIGN	23
926.0121	UNANCHORED PRECAST CONCRETE BARRIER FOR TEMPORARY TRAFFIC CONTROL STANDARD 40.5.0	23
926.0140	REFLECTIVE DELINEATORS FOR TEMPORARY CONCRETE BARRIERS	24
926.9901	ANCHORED BARRIER FOR TEMPORARY TRAFFIC CONTROL	24
928.9901	TRUCK MOUNTED ATTENUATOR (TMA) WITH TRUCK MOUNTED FLASHING ARROW BOARD (TMFAB)	25
929.0110	FIELD OFFICE	25
931.0110	CLEANING AND SWEEPING PAVEMENT	25
932.0100	CUTTING AND MATCHING ASPHALT	25
932.0200	FULL-DEPTH SAWCUT OF BITUMINOUS PAVEMENT	26
935.0400	REMOVING BITUMINOUS PAVEMENT BY MICRO MILLING	26
936.0110	MOBILIZATION	26
937.0200	MAINTENANCE AND MOVEMENT TRAFFIC PROTECTION	26
T20.0006	6 INCH WHITE FAST - DRYING WATERBORNE PAVEMENT MARKING PAINT	27
T20.0012	12 INCH WHITE FAST - DRYING WATERBORNE PAVEMENT MARKING PAINT	27
T20.0106	6 INCH YELLOW FAST - DRYING WATERBORNE PAVEMENT MARKING PAINT	27
T20.1000	REMOVE EXISTING PAVEMENT MARKINGS	28
T20.2006	6 INCH EPOXY RESIN PAVEMENT MARKINGS WHITE	28
T20.2012	12 INCH EPOXY RESIN PAVEMENT MARKINGS WHITE	29
T20.2014	4 INCH EPOXY RESIN PAVEMENT MARKINGS YELLOW	29
T20.2016	6 INCH EPOXY RESIN PAVEMENT MARKINGS YELLOW	29

Distribution of Quantities

Project Name - Statewide Bridge Repairs Contract 4 - Amtrak Bridges
 Estimate Name - Statewide Bridge Repair Contract 4 (including AMTRAK Crossings) -
 Addendum 1

R.I. Contract No. - 2019-CB-011

FAP Nos: BHO-0243(002)

Item No.	Item Code	Description	UM	Qty.	Pay Code	Seq. No.
001	201.0403	REMOVE AND DISPOSE SIDEWALKS	SY			
		BRIDGE NO. 772				
		BRIDGE NO. 772		6.00	0014	01
Item 201.0403 Total:				6.00		
002	201.0409	REMOVE AND DISPOSE FLEXIBLE PAVEMENT	SY			
		BRIDGE NO. 243				
		BRIDGE NO. 243		160.00	0014	01
		BRIDGE NO. 772				
		BRIDGE NO. 772		145.00	0014	01
		BRIDGE NO. 834				
		BRIDGE NO. 834		37.00	0014	01
		BRIDGE NO. 841				
		BRIDGE NO. 841		79.00	0014	01
Item 201.0409 Total:				421.00		
003	201.0430	REMOVE AND DISPOSE CONCRETE MEDIAN BARRIER	LF			
		BRIDGE NO. 772				
		BRIDGE NO. 772		20.00	0014	01
Item 201.0430 Total:				20.00		
004	203.0100	STRUCTURAL EXCAVATION EARTH	CY			
		BRIDGE NO. 243				
		BRIDGE NO. 243		100.00	0014	01
		BRIDGE NO. 772				
		BRIDGE NO. 772		58.00	0014	01
		BRIDGE NO. 834				
		BRIDGE NO. 834		11.00	0014	01
		BRIDGE NO. 841				
		BRIDGE NO. 841		49.00	0014	01
Item 203.0100 Total:				218.00		

Distribution of Quantities

Project Name - Statewide Bridge Repairs Contract 4 - Amtrak Bridges
 Estimate Name - Statewide Bridge Repair Contract 4 (including AMTRAK Crossings) -
 Addendum 1
 R.I. Contract No. - 2019-CB-011
 FAP Nos: BHO-0243(002)

Item No.	Item Code	Description	UM	Qty.	Pay Code	Seq. No.
005	203.0650	CRUSHED STONE FILL UNDER STRUCTURES CY				
		BRIDGE NO. 243				
		BRIDGE NO. 243		50.00	0014	01
		BRIDGE NO. 772				
		BRIDGE NO. 772		27.00	0014	01
		BRIDGE NO. 841				
		BRIDGE NO. 841		13.00	0014	01
Item 203.0650 Total:				90.00		
006	204.0100	TRIMMING AND FINE GRADING	SY			
		BRIDGE NO. 772				
		BRIDGE NO. 772		5.00	0014	01
Item 204.0100 Total:				5.00		
007	209.9901	SEDIMENTATION CONTROL FOR CATCH BASINS	EACH			
		BRIDGE 243				
		ROUTE 4 NB		10.00	0014	01
		ROUTE 4 SB		8.00	0014	01
		BRIDGE 772				
		AIRPORT CONNECTOR		2.00	0014	01
		BRIDGE 834				
		CORONADO ROAD (ADJACENT TO BRIDGE)		2.00	0014	01
		BRIDGE 841				
		POST ROAD EXTENSION SB		2.00	0014	01
Item 209.9901 Total:				24.00		
008	212.2000	CLEANING AND MAINTENANCE OF EROSION CONTROLS	LS			
		ALL WORK ZONES				
		ALL WORK ZONES		1.00	0014	01
Item 212.2000 Total:				1.00		

Distribution of Quantities

Project Name - Statewide Bridge Repairs Contract 4 - Amtrak Bridges
 Estimate Name - Statewide Bridge Repair Contract 4 (including AMTRAK Crossings) -
 Addendum 1
 R.I. Contract No. - 2019-CB-011
 FAP Nos: BHO-0243(002)

<u>Item No.</u>	<u>Item Code</u>	<u>Description</u>	<u>UM</u>	<u>Qty.</u>	<u>Pay Code</u>	<u>Seq. No.</u>
009	302.0100	GRAVEL BORROW SUBBASE COURSE	CY			
		BRIDGE NO. 772				
		BRIDGE NO. 772		32.00	0014	01
		BRIDGE NO. 834				
		BRIDGE NO. 834		11.00	0014	01
		BRIDGE NO. 841				
		BRIDGE NO. 841		35.00	0014	01
Item 302.0100 Total:				78.00		
010	401.1000	CLASS 19.0 HMA	TON			
		BRIDGE NO. 243				
		BRIDGE NO. 243		92.00	0014	01
		BRIDGE NO. 772				
		BRIDGE NO. 772		50.00	0014	01
Item 401.1000 Total:				142.00		
011	401.3000	CLASS 9.5 HMA	TON			
		BRIDGE NO. 243				
		BRIDGE NO. 243		30.00	0014	01
		BRIDGE NO. 772				
		BRIDGE NO. 772		65.00	0014	01
		BRIDGE NO. 834				
		BRIDGE NO. 834		15.00	0014	01
		BRIDGE NO. 841				
		BRIDGE NO. 841		44.00	0014	01
Item 401.3000 Total:				154.00		
012	401.3100	MODIFIED CLASS 9.5 HMA	TON			
		BRIDGE NO. 243				
		BRIDGE NO. 243		64.00	0014	01
		BRIDGE NO. 772				
		BRIDGE NO. 772		170.00	0014	01
		BRIDGE NO. 834				

Distribution of Quantities

Project Name - Statewide Bridge Repairs Contract 4 - Amtrak Bridges
 Estimate Name - Statewide Bridge Repair Contract 4 (including AMTRAK Crossings) -
 Addendum 1
 R.I. Contract No. - 2019-CB-011
 FAP Nos: BHO-0243(002)

Item No.	Item Code	Description	UM	Qty.	Pay Code	Seq. No.
012	401.3100	Cont.				
		BRIDGE NO. 834		60.00	0014	01
		BRIDGE NO. 841				
		BRIDGE NO. 841		38.00	0014	01
				Item 401.3100 Total:		332.00
013	401.9901	PAY ADJUSTMENTS	EACH			
		PROJECTWIDE				
		PER SPECIFICATION		15,000.00	0014	01
				Item 401.9901 Total:		15,000.00
014	402.9901	FRICITION COURSE	TON			
		BRIDGE 243				
		ROUTE 4 NB		616.00	0014	01
		ROUTE 4 SB		616.00	0014	01
				Item 402.9901 Total:		1,232.00
015	403.0300	ASPHALT EMULSION TACK COAT	SY			
		BRIDGE NO. 243				
		BRIDGE NO. 243		800.00	0014	01
		ROUTE 4 NB		6,470.00	0014	01
		ROUTE 4 SB		6,470.00	0014	01
		BRIDGE NO. 772				
		BRIDGE NO. 772		1,300.00	0014	01
		BRIDGE NO. 834				
		BRIDGE NO. 834		750.00	0014	01
		BRIDGE NO. 841				
		BRIDGE NO. 841		785.00	0014	01
				Item 403.0300 Total:		16,575.00
016	410.9901	MICRO MILLING AND FILL RUMBLE	SY			
		STRIP WITH CLASS 12.5 HOT MIX				
		ASPHALT				
		BRIDGE 243				

Distribution of Quantities

Project Name - Statewide Bridge Repairs Contract 4 - Amtrak Bridges
 Estimate Name - Statewide Bridge Repair Contract 4 (including AMTRAK Crossings) -
 Addendum 1

R.I. Contract No. - 2019-CB-011

FAP Nos: BHO-0243(002)

Item No.	Item Code	Description	UM	Qty.	Pay Code	Seq. No.
016	410.9901 Cont.	ROUTE 4 NB		278.00	0014	01
		ROUTE 4 SB		278.00	0014	01
Item 410.9901 Total:				556.00		
017	603.1000	CONTROLLED LOW STRENGTH MATERIAL	CY			
		BRIDGE NO. 772				
		BRIDGE NO. 772		4.00	0014	01
Item 603.1000 Total:				4.00		
018	708.9040	CLEANING AND FLUSHING PIPE ALL SIZES	LF			
		BRIDGE 243				
		ROUTE 4		900.00	0014	01
		BRIDGE 772				
		AIRPORT CONNECTOR		100.00	0014	01
		BRIDGE 834				
		CORONADO ROAD		100.00	0014	01
		BRIDGE 841				
		POST ROAD EXTENSION SB		100.00	0014	01
Item 708.9040 Total:				1,200.00		
019	708.9041	CLEANING CATCH BASINS ALL TYPES AND SIZES	EACH			
		BRIDGE 243				
		ROUTE 4		18.00	0014	01
		BRIDGE 772				
		AIRPORT CONNECTOR		2.00	0014	01
		BRIDGE 834				
		CORONADO ROAD		2.00	0014	01
		BRIDGE 841				
		POST ROAD EXTENSION SB		2.00	0014	01
Item 708.9041 Total:				24.00		

Distribution of Quantities

Project Name - Statewide Bridge Repairs Contract 4 - Amtrak Bridges
 Estimate Name - Statewide Bridge Repair Contract 4 (including AMTRAK Crossings) -
 Addendum 1
 R.I. Contract No. - 2019-CB-011
 FAP Nos: BHO-0243(002)

Item No.	Item Code	Description	UM	Qty.	Pay Code	Seq. No.
020	803.0400	CLEANING BRIDGE BEAM SEATS	EACH			
		BRIDGE NO. 243				
		BRIDGE NO. 243		2.00	0014	01
Item 803.0400 Total:				2.00		
021	803.0500	TEMPORARY DECK UNDERSIDE AND SIDE PROTECTIVE SHIELDING	SF			
		BRIDGE NO. 243				
		BRIDGE NO. 243		5,200.00	0014	01
		BRIDGE NO. 772				
		BRIDGE NO. 772		1,600.00	0014	01
		BRIDGE NO. 834				
		BRIDGE NO. 834		2,050.00	0014	01
		BRIDGE NO. 841				
		BRIDGE NO. 841		1,150.00	0014	01
Item 803.0500 Total:				10,000.00		
022	803.9910	REMOVE AND DISPOSE PORTION OF EXISTING CONCRETE SUBSTRUCTURE	CY			
		BRIDGE NO. 243				
		BRIDGE NO. 243		100.00	0014	01
		BRIDGE NO. 772				
		BRIDGE NO. 772		88.00	0014	01
		BRIDGE NO. 834				
		BRIDGE NO. 834		7.00	0014	01
		BRIDGE NO. 841				
		BRIDGE NO. 841		41.00	0014	01
Item 803.9910 Total:				236.00		
023	803.9920	REMOVE AND DISPOSE PORTION OF EXISTING CONCRETE SUPERSTRUCTURE	CY			
		BRIDGE NO. 243				
		BRIDGE NO. 243		50.00	0014	01

Distribution of Quantities

Project Name - Statewide Bridge Repairs Contract 4 - Amtrak Bridges
 Estimate Name - Statewide Bridge Repair Contract 4 (including AMTRAK Crossings) -
 Addendum 1
 R.I. Contract No. - 2019-CB-011
 FAP Nos: BHO-0243(002)

Item No.	Item Code	Description	UM	Qty.	Pay Code	Seq. No.
023	803.9920 Cont.	BRIDGE NO. 772				
		BRIDGE NO. 772		20.00	0014	01
		BRIDGE NO. 834				
		BRIDGE NO. 834		25.00	0014	01
		BRIDGE NO. 841				
		BRIDGE NO. 841		15.00	0014	01
				Item 803.9920 Total:		110.00
024	803.9925	REMOVE AND DISPOSE EXISTING STEEL BEARING BRIDGE NO. 834	EACH			
		BRIDGE NO. 834				
		BRIDGE NO. 834		1.00	0014	01
				Item 803.9925 Total:		1.00
025	803.9930	TEMPORARY SUPPORT OF EXISTING PARAPET, SAFETYWALK, AND DECK - BRIDGE NO. 772	LS			
		BRIDGE NO. 772				
		BRIDGE NO. 772		1.00	0014	01
				Item 803.9930 Total:		1.00
026	805.9910	TEMPORARY SHORING AND BRACING BEHIND BACKWALLS	SF			
		BRIDGE NO. 243				
		BRIDGE NO. 243		1,500.00	0014	01
		BRIDGE NO. 772				
		BRIDGE NO. 772		610.00	0014	01
		BRIDGE NO. 834				
		BRIDGE NO. 834		150.00	0014	01
		BRIDGE NO. 841				
		BRIDGE NO. 841		660.00	0014	01
				Item 805.9910 Total:		2,920.00

Distribution of Quantities

Project Name - Statewide Bridge Repairs Contract 4 - Amtrak Bridges
 Estimate Name - Statewide Bridge Repair Contract 4 (including AMTRAK Crossings) -
 Addendum 1
 R.I. Contract No. - 2019-CB-011
 FAP Nos: BHO-0243(002)

Item No.	Item Code	Description	UM	Qty.	Pay Code	Seq. No.
027	808.0323	CONCRETE SUBSTRUCTURE CLASS HP	CY			
		3/4'' PARAPETS				
		BRIDGE NO. 243				
		BRIDGE NO. 243		12.00	0014	01
		BRIDGE NO. 772				
		BRIDGE NO. 772		12.00	0014	01
		BRIDGE NO. 841				
		BRIDGE NO. 841		2.00	0014	01
		Item 808.0323 Total:		26.00		
028	808.0505	CONCRETE SUBSTRUCTURE CLASS HP	CY			
		3/4'' WALL STEMS				
		BRIDGE NO. 243				
		BRIDGE NO. 243		7.00	0014	01
		BRIDGE NO. 841				
		BRIDGE NO. 841		3.00	0014	01
		Item 808.0505 Total:		10.00		
029	808.0508	CONCRETE SUBSTRUCTURE CLASS XX	CY			
		3/4'' APPROACH SLABS				
		BRIDGE NO. 243				
		BRIDGE NO. 243		50.00	0014	01
		BRIDGE NO. 772				
		BRIDGE NO. 772		52.00	0014	01
		BRIDGE NO. 841				
		BRIDGE NO. 841		28.00	0014	01
		Item 808.0508 Total:		130.00		
030	808.0601	CONCRETE SUBSTRUCTURE CLASS HP	CY			
		3/4'' PIERS, COL, CAP				
		BRIDGE NO. 834				
		BRIDGE NO. 834		1.00	0014	01
		Item 808.0601 Total:		1.00		

Distribution of Quantities

Project Name - Statewide Bridge Repairs Contract 4 - Amtrak Bridges
 Estimate Name - Statewide Bridge Repair Contract 4 (including AMTRAK Crossings) -
 Addendum 1
 R.I. Contract No. - 2019-CB-011
 FAP Nos: BHO-0243(002)

Item No.	Item Code	Description	UM	Qty.	Pay Code	Seq. No.
031	808.0602	CONCRETE SUBSTRUCTURE CLASS HP	CY			
		3/4'' BACKWALLS				
		BRIDGE NO. 243				
		BRIDGE NO. 243		37.00	0014	01
		BRIDGE NO. 772				
		BRIDGE NO. 772		24.00	0014	01
		BRIDGE NO. 834				
		BRIDGE NO. 834		2.00	0014	01
		BRIDGE NO. 841				
		BRIDGE NO. 841		13.00	0014	01
		Item 808.0602 Total:		76.00		
032	808.1501	CONCRETE SUPERSTRUCTURE CLASS HP	CY			
		3/4'' BRIDGE DECKS				
		BRIDGE NO. 243				
		BRIDGE NO. 243		35.00	0014	01
		BRIDGE NO. 772				
		BRIDGE NO. 772		18.00	0014	01
		BRIDGE NO. 834				
		BRIDGE NO. 834		21.00	0014	01
		BRIDGE NO. 841				
		BRIDGE NO. 841		18.00	0014	01
		Item 808.1501 Total:		92.00		
033	808.1502	CONCRETE SUPERSTRUCTURE CLASS HP	CY			
		3/4'' BRIDGE SIDEWALKS				
		BRIDGE NO. 772				
		BRIDGE NO. 772		2.00	0014	01
		BRIDGE NO. 834				
		BRIDGE NO. 834		5.00	0014	01
		Item 808.1502 Total:		7.00		
034	808.1503	CONCRETE SUPERSTRUCTURE CLASS HP	CY			

Distribution of Quantities

Project Name - Statewide Bridge Repairs Contract 4 - Amtrak Bridges
 Estimate Name - Statewide Bridge Repair Contract 4 (including AMTRAK Crossings) -
 Addendum 1

R.I. Contract No. - 2019-CB-011

FAP Nos: BHO-0243(002)

Item No.	Item Code	Description	UM	Qty.	Pay Code	Seq. No.
034	808.1503	Cont. 3/4'' PARAPETS				
		BRIDGE NO. 243				
		BRIDGE NO. 243		9.00	0014	01
		BRIDGE NO. 772				
		BRIDGE NO. 772		3.00	0014	01
		BRIDGE NO. 841				
		BRIDGE NO. 841		3.00	0014	01
Item 808.1503 Total:				15.00		
035	808.1640	PREFORMED POLYETHYLENE FOAM JOINT FILLER 1/2''	SF			
		BRIDGE NO. 243				
		BRIDGE NO. 243		270.00	0014	01
		BRIDGE NO. 772				
		BRIDGE NO. 772		390.00	0014	01
		BRIDGE NO. 841				
		BRIDGE NO. 841		145.00	0014	01
Item 808.1640 Total:				805.00		
036	808.1642	PREFORMED POLYETHYLENE FOAM JOINT FILLER 1''	SF			
		BRIDGE NO. 243				
		BRIDGE NO. 243		480.00	0014	01
		BRIDGE NO. 772				
		BRIDGE NO. 772		450.00	0014	01
		BRIDGE NO. 834				
		BRIDGE NO. 834		85.00	0014	01
		BRIDGE NO. 841				
		BRIDGE NO. 841		150.00	0014	01
Item 808.1642 Total:				1,165.00		
037	808.1646	PREFORMED POLYETHYLENE FOAM JOINT FILLER 2''	SF			

Distribution of Quantities

Project Name - Statewide Bridge Repairs Contract 4 - Amtrak Bridges
 Estimate Name - Statewide Bridge Repair Contract 4 (including AMTRAK Crossings) -
 Addendum 1

R.I. Contract No. - 2019-CB-011

FAP Nos: BHO-0243(002)

Item No.	Item Code	Description	UM	Qty.	Pay Code	Seq. No.
037	808.1646 Cont.	BRIDGE NO. 841				
		BRIDGE NO. 841		190.00	0014	01
				Item 808.1646 Total:		190.00
038	808.1675	POLYURETHANE ELASTOMERIC JOINT	CI			
		SEALANT				
		BRIDGE NO. 243				
		BRIDGE NO. 243		300.00	0014	01
		BRIDGE NO. 772				
		BRIDGE NO. 772		425.00	0014	01
		BRIDGE NO. 834				
		BRIDGE NO. 834		850.00	0014	01
		BRIDGE NO. 841				
		BRIDGE NO. 841		905.00	0014	01
				Item 808.1675 Total:		2,480.00
039	808.1810	CONCRETE SURFACE FINISHING RUBBED	SF			
		REGULAR				
		BRIDGE NO. 243				
		BRIDGE NO. 243		540.00	0014	01
		BRIDGE NO. 772				
		BRIDGE NO. 772		200.00	0014	01
		BRIDGE NO. 834				
		BRIDGE NO. 834		20.00	0014	01
		BRIDGE NO. 841				
		BRIDGE NO. 841		250.00	0014	01
				Item 808.1810 Total:		1,010.00
040	810.0210	GALVANIZED BAR REINFORCEMENT GRADE	LBS			
		60				
		BRIDGE NO. 243				
		BRIDGE NO. 243		15,400.00	0014	01
		BRIDGE NO. 772				

Distribution of Quantities

Project Name - Statewide Bridge Repairs Contract 4 - Amtrak Bridges
 Estimate Name - Statewide Bridge Repair Contract 4 (including AMTRAK Crossings) -
 Addendum 1
 R.I. Contract No. - 2019-CB-011
 FAP Nos: BHO-0243(002)

Item No.	Item Code	Description	UM	Qty.	Pay Code	Seq. No.
040	810.0210	Cont.				
		BRIDGE NO. 772		13,500.00	0014	01
		BRIDGE NO. 834				
		BRIDGE NO. 834		2,750.00	0014	01
		BRIDGE NO. 841				
		BRIDGE NO. 841		7,200.00	0014	01
Item 810.0210 Total:				38,850.00		
041	810.0702	WELDED WIRE FABRIC (GALVANIZED)	SF			
		BRIDGE NO. 772				
		BRIDGE NO. 772		54.00	0014	01
Item 810.0702 Total:				54.00		
042	811.0200	SUB PAVEMENT DRAINS	EACH			
		BRIDGE NO. 243				
		BRIDGE NO. 243		2.00	0014	01
		BRIDGE NO. 772				
		BRIDGE NO. 772		2.00	0014	01
		BRIDGE NO. 834				
		BRIDGE NO. 834		1.00	0014	01
		BRIDGE NO. 841				
		BRIDGE NO. 841		1.00	0014	01
Item 811.0200 Total:				6.00		
S043	813.9910	PREFABRICATED WATERPROOFING SHEET	SY			
		MEMBRANE				
		BRIDGE NO. 243				
		BRIDGE NO. 243		140.00	0014	01
		BRIDGE NO. 772				
		BRIDGE NO. 772		1,050.00	0014	01
		BRIDGE NO. 834				
		BRIDGE NO. 834		111.00	0014	01
		BRIDGE NO. 841				
		BRIDGE NO. 841		84.00	0014	01

Distribution of Quantities

Project Name - Statewide Bridge Repairs Contract 4 - Amtrak Bridges
 Estimate Name - Statewide Bridge Repair Contract 4 (including AMTRAK Crossings) -
 Addendum 1
 R.I. Contract No. - 2019-CB-011
 FAP Nos: BHO-0243(002)

Item No.	Item Code	Description	UM	Qty.	Pay Code	Seq. No.
S043	813.9910	Cont.				
Item 813.9910 Total:				1,385.00		
044	817.9901	REPAIRS TO STRUCTURAL CONCRETE	SF			
		MASONRY (PATCHING MORTAR)				
		BRIDGE NO. 243				
		BRIDGE NO. 243		100.00	0014	01
		BRIDGE NO. 772				
		BRIDGE NO. 772		255.00	0014	01
		BRIDGE NO. 834				
		BRIDGE NO. 834		140.00	0014	01
		BRIDGE NO. 841				
		BRIDGE NO. 841		100.00	0014	01
Item 817.9901 Total:				595.00		
045	817.9902	REPAIRS TO STRUCTURAL CONCRETE	SF			
		MASONRY (FORM AND CAST IN PLACE)				
		BRIDGE NO. 243				
		BRIDGE NO. 243		200.00	0014	01
		BRIDGE NO. 772				
		BRIDGE NO. 772		255.00	0014	01
		BRIDGE NO. 834				
		BRIDGE NO. 834		560.00	0014	01
		BRIDGE NO. 841				
		BRIDGE NO. 841		100.00	0014	01
Item 817.9902 Total:				1,115.00		
046	818.9901	PORTLAND CEMENT CONCRETE DECK	EACH			
		REPAIRS				
		ALL WORK ZONES				
		ALL WORK ZONES		50,000.00	0014	01
Item 818.9901 Total:				50,000.00		
047	819.0800	DRILL AND GROUT REINFORCING DOWELS	EACH			

Distribution of Quantities

Project Name - Statewide Bridge Repairs Contract 4 - Amtrak Bridges
 Estimate Name - Statewide Bridge Repair Contract 4 (including AMTRAK Crossings) -
 Addendum 1
 R.I. Contract No. - 2019-CB-011
 FAP Nos: BHO-0243 (002)

Item No.	Item Code	Description	UM	Qty.	Pay Code	Seq. No.
047	819.0800 Cont.	BRIDGE NO. 243				
		BRIDGE NO. 243		16.00	0014	01
		BRIDGE NO. 772				
		BRIDGE NO. 772		32.00	0014	01
Item 819.0800 Total:				48.00		
048	820.0110	CONCRETE SURFACE TREATMENT (PROTECTIVE COATING)	SF			
		BRIDGE NO. 772				
		BRIDGE NO. 772		6,450.00	0014	01
Item 820.0110 Total:				6,450.00		
049	821.1690	SAW & SEALING JOINTS IN BITUMINOUS CONCRETE PAVEMENT	LF			
		BRIDGE NO. 243				
		BRIDGE NO. 243		105.00	0014	01
		BRIDGE NO. 772				
		BRIDGE NO. 772		110.00	0014	01
		BRIDGE NO. 834				
		BRIDGE NO. 834		84.00	0014	01
		BRIDGE NO. 841				
		BRIDGE NO. 841		49.00	0014	01
Item 821.1690 Total:				348.00		
S050	823.1750	ASPHALTIC EXPANSION JOINT SYSTEM	LF			
		BRIDGE NO. 772				
		BRIDGE NO. 772		100.00	0014	01
Item 823.1750 Total:				100.00		
S051	823.1760	STRIP SEAL EXPANSION JOINT ASSEMBLIES	LF			
		BRIDGE NO. 243				
		BRIDGE NO. 243		105.00	0014	01

Distribution of Quantities

Project Name - Statewide Bridge Repairs Contract 4 - Amtrak Bridges
 Estimate Name - Statewide Bridge Repair Contract 4 (including AMTRAK Crossings) -
 Addendum 1
 R.I. Contract No. - 2019-CB-011
 FAP Nos: BHO-0243(002)

Item No.	Item Code	Description	UM	Qty.	Pay Code	Seq. No.
S051	823.1760	Cont. BRIDGE NO. 834				
		BRIDGE NO. 834		53.00	0014	01
		BRIDGE NO. 841				
		BRIDGE NO. 841		71.00	0014	01
Item 823.1760 Total:				229.00		
052	824.9920	STEEL BEAM / GIRDER REPAIRS - BRIDGE NO. 243	LBS			
		BRIDGE NO. 243				
		BRIDGE NO. 243		3,720.00	0014	01
Item 824.9920 Total:				3,720.00		
053	824.9921	STEEL BEAM / GIRDER REPAIRS - BRIDGE NO. 772	LBS			
		BRIDGE NO. 772				
		BRIDGE NO. 772		2,400.00	0014	01
Item 824.9921 Total:				2,400.00		
054	824.9922	COVER PLATE END REPAIR - BRIDGE NO. 243	EACH			
		BRIDGE NO. 243				
		BRIDGE NO. 243		2.00	0014	01
Item 824.9922 Total:				2.00		
055	824.9925	END DIAPHRAGM CONNECTION REPAIR - BRIDGE NO. 243	EACH			
		BRIDGE NO. 243				
		BRIDGE NO. 243		8.00	0014	01
Item 824.9925 Total:				8.00		
056	824.9930	TEMPORARY TRAFFIC PLATE - BRIDGE NO. 834	LS			
		BRIDGE NO. 834				

Distribution of Quantities

Project Name - Statewide Bridge Repairs Contract 4 - Amtrak Bridges
 Estimate Name - Statewide Bridge Repair Contract 4 (including AMTRAK Crossings) -
 Addendum 1

R.I. Contract No. - 2019-CB-011

FAP Nos: BHO-0243(002)

Item No.	Item Code	Description	UM	Qty.	Pay Code	Seq. No.
056	824.9930 Cont.	BRIDGE NO. 834		1.00	0014	01
Item 824.9930 Total:				1.00		
057	824.9940	TEMPORARY JACKING AND SHORING OF BEAM - BRIDGE NO 834 BRIDGE NO. 834 BRIDGE NO. 834	EACH	1.00	0014	01
Item 824.9940 Total:				1.00		
058	825.9920	REPAINTING EXISTING STRUCTURAL STEEL - BRIDGE NO. 243 BRIDGE NO. 243 BRIDGE NO. 243	LS	1.00	0014	01
Item 825.9920 Total:				1.00		
059	825.9921	REPAINTING EXISTING STRUCTURAL STEEL - BRIDGE NO. 772 BRIDGE NO. 772 BRIDGE NO. 772	LS	1.00	0014	01
Item 825.9921 Total:				1.00		
060	828.0210	SLIDING BEARINGS STANDARD EXPANSION BRIDGE NO. 834 BRIDGE NO. 834	EACH	1.00	0014	01
Item 828.0210 Total:				1.00		
061	834.0112	VERTICAL FACE GRANITE CURB CURVED 10'' REVEAL BRIDGE NO. 772 BRIDGE NO. 772	LF	72.00	0014	01
Item 834.0112 Total:				72.00		
062	834.0131	VERTICAL FACE GRANITE CURB	LF			

Distribution of Quantities

Project Name - Statewide Bridge Repairs Contract 4 - Amtrak Bridges
 Estimate Name - Statewide Bridge Repair Contract 4 (including AMTRAK Crossings) -
 Addendum 1
 R.I. Contract No. - 2019-CB-011
 FAP Nos: BHO-0243 (002)

Item No.	Item Code	Description	UM	Qty.	Pay Code	Seq. No.
062	834.0131	Cont. STRAIGHT 7'' REVEAL				
		BRIDGE NO. 834				
		BRIDGE NO. 834		30.00	0014	01
Item 834.0131 Total:				30.00		
063	834.0212	SLOPE FACE GRANITE CURB STRAIGHT 10'' X 15''	LF			
		BRIDGE NO. 243				
		BRIDGE NO. 243		66.00	0014	01
		BRIDGE NO. 841				
		BRIDGE NO. 841		36.00	0014	01
Item 834.0212 Total:				102.00		
064	839.0100	PARTIAL-DEPTH REMOVAL AND DISPOSAL OF BITUMINOUS PAVEMENT FROM CONCRETE BRIDGE DECKS	SY			
		BRIDGE NO. 243				
		BRIDGE NO. 243		620.00	0014	01
		BRIDGE NO. 834				
		BRIDGE NO. 834		460.00	0014	01
		BRIDGE NO. 841				
		BRIDGE NO. 841		340.00	0014	01
Item 839.0100 Total:				1,420.00		
065	839.0200	FULL DEPTH REMOVAL AND DISPOSAL OF BITUMINOUS PAVEMENT FROM CONCRETE BRIDGE DECKS	SY			
		BRIDGE NO. 243				
		BRIDGE NO. 243		95.00	0014	01
		BRIDGE NO. 772				
		BRIDGE NO. 772		1,010.00	0014	01
		BRIDGE NO. 834				
		BRIDGE NO. 834		80.00	0014	01

Distribution of Quantities

Project Name - Statewide Bridge Repairs Contract 4 - Amtrak Bridges
 Estimate Name - Statewide Bridge Repair Contract 4 (including AMTRAK Crossings) -
 Addendum 1
 R.I. Contract No. - 2019-CB-011
 FAP Nos: BHO-0243(002)

Item No.	Item Code	Description	UM	Qty.	Pay Code	Seq. No.
065	839.0200 Cont.	BRIDGE NO. 841				
		BRIDGE NO. 841		54.00	0014	01
				Item 839.0200 Total:		1,239.00
066	905.0110	PORTLAND CEMENT SIDEWALK	CY			
		MONOLITHIC STANDARD 43.1.0				
		BRIDGE NO. 772				
		BRIDGE NO. 772		1.00	0014	01
				Item 905.0110 Total:		1.00
067	906.0700	REMOVE, HANDLE, HAUL TRIM RESET	LF			
		CURB EDGING, STRAIGHT, CIRCULAR				
		ALL TYPES				
		BRIDGE NO. 772				
		BRIDGE NO. 772		36.00	0014	01
				Item 906.0700 Total:		36.00
068	910.9901	CUT BITUMINOUS RUBBLE STRIPS	LF			
		BRIDGE 243				
		ROUTE 4 NB		2,500.00	0014	01
		ROUTE 4 SB		2,500.00	0014	01
				Item 910.9901 Total:		5,000.00
069	914.5010	FLAGPERSONS	MHRS			
		BRIDGE 834				
		AS DIRECTED		1,440.00	0014	01
				Item 914.5010 Total:		1,440.00
070	914.5020	FLAGPERSONS - OVERTIME	MHRS			
		BRIDGE 834				
		AS DIRECTED		144.00	0014	01
				Item 914.5020 Total:		144.00

Distribution of Quantities

Project Name - Statewide Bridge Repairs Contract 4 - Amtrak Bridges
 Estimate Name - Statewide Bridge Repair Contract 4 (including AMTRAK Crossings) -
 Addendum 1
 R.I. Contract No. - 2019-CB-011
 FAP Nos: BHO-0243(002)

Item No.	Item Code	Description	UM	Qty.	Pay Code	Seq. No.
071	916.0600	SHOCK ABSORBING BARRIER MODULES	GRP			
		BRIDGE NO. 772				
		EB LANE PHASE 1		1.00	0014	01
		WB LANE PHASE 1		1.00	0014	01
		GORTON RR BR. 841				
		ROUTE 1 SOUTHBOUND		1.00	0014	01
		LAFAYETTE RR BRIDGE NO. 243				
		PHASE 1		2.00	0014	01
				Item 916.0600 Total:		5.00
072	916.0650	REMOVE, RELOCATE AND RESET SHOCK ABSORBING BARRIER MODULES	GRP			
		BRIDGE NO. 772				
		EB LANE PHASE 1 TO PHASE 2		1.00	0014	01
		EB LANE PHASE 2 TO PHASE 3		1.00	0014	01
		WB LANE PHASE 1 TO PHASE 2		1.00	0014	01
		WB LANE PHASE 2 TO PHASE 3		1.00	0014	01
		GORTON RR BR. 841				
		ROUTE 1 SOUTHBOUND		1.00	0014	01
		LAFAYETTE RR BRIDGE NO. 243				
		PHASE 2		2.00	0014	01
		PHASE 3		2.00	0014	01
				Item 916.0650 Total:		9.00
073	922.0100	TEMPORARY CONSTRUCTION SIGNS	SF			
		STANDARD 29.1.0 AND 27.1.1				
		ADDITIONAL SIGNS				
		W20-4 ONE LANE ROAD AHEAD		18.00	0014	01
		36X36 (2)				
		W20-5 LEFT LANE CLOSED 1/2		64.00	0014	01
		MILE 48X48 (4)				
		W20-5 RIGHT LANE CLOSED 1/2		64.00	0014	01
		MILE 48X48 (4)				

Distribution of Quantities

Project Name - Statewide Bridge Repairs Contract 4 - Amtrak Bridges
 Estimate Name - Statewide Bridge Repair Contract 4 (including AMTRAK Crossings) -
 Addendum 1
 R.I. Contract No. - 2019-CB-011
 FAP Nos: BHO-0243(002)

Item No.	Item Code	Description	UM	Qty.	Pay Code	Seq. No.
073	922.0100	Cont.				
		W20-7A FLAGGER SYMBOL 36X36		18.00	0014	01
		(2)				
		W21-5 SHOULDER WORK 36X36 (2)		18.00	0014	01
		W21-5A LEFT SHOULDER CLOSED		32.00	0014	01
		48X48 (2)				
		W21-5A RIGHT SHOULDER CLOSED		32.00	0014	01
		48X48 (2)				
		W24-1L LANE SHIFT 36X36 (1)		9.00	0014	01
		W24-1R LANE SHIFT 36X36 (1)		9.00	0014	01
		W4-2L LEFT LANE CLOSED		64.00	0014	01
		SYMBOL 48X48 (4)				
		W4-2R RIGHT LANE CLOSED		64.00	0014	01
		SYMBOL 48X48 (4)				
		BRIDGE NO. 772				
		E5-1 (48"X36") EXIT ARROW (1)		12.00	0014	01
		E5-2 (48"36") EXIT OPEN (1)		12.00	0014	01
		G20-2 (48"X24") END ROAD		16.00	0014	01
		WORK (2)				
		R.I. STD. 27.1.1 (48"X72")		96.00	0014	01
		WORK ZONE TRAFFIC FINES				
		DOUBLED (4)				
		W13-1P (30"X30") 35 M.P.H.		25.00	0014	01
		(4)				
		W20-1 (48"X48") ROAD WORK		80.00	0014	01
		AHEAD (5)				
		W20-5L (48"X48") LEFT LANE		64.00	0014	01
		CLOSED AHEAD (4)				
		W20-5R (48"X48") RIGHT LANE		64.00	0014	01
		CLOSED AHEAD (4)				
		W4-2L (48"X48") LEFT LANE		64.00	0014	01
		CLOSED (4)				
		W4-2R (48"X48") RIGHT LANE		64.00	0014	01
		CLOSED (4)				

Distribution of Quantities

Project Name - Statewide Bridge Repairs Contract 4 - Amtrak Bridges
 Estimate Name - Statewide Bridge Repair Contract 4 (including AMTRAK Crossings) -
 Addendum 1

R.I. Contract No. - 2019-CB-011

FAP Nos: BHO-0243(002)

Item No.	Item Code	Description	UM	Qty.	Pay Code	Seq. No.
073	922.0100 Cont.	CORONADO RD BRIDGE NO. 834				
		M4-10L (36"X12") DETOUR LEFT ARROW		3.00	0014	01
		M6-1L (21"X15") LEFT ARROW (3)		7.00	0014	01
		M6-1R (21"X15") RIGHT ARROW (13)		29.00	0014	01
		M6-3 (21"X15") STRAIGHT ARROW (6)		14.00	0014	01
		R.I. STD. 27.1.1 (24"X36") WORK ZONE TRAFFIC FINES DOUBLED (2)		12.00	0014	01
		R11-2 (48"X30") ROAD CLOSED (2)		20.00	0014	01
		R9-11L (24"X12") SIDEWALK CLOSED AHEAD CROSS HERE (2)		4.00	0014	01
		R9-9 (24"X12") SIDEWALK CLOSED (2)		4.00	0014	01
		W20-1 (36"X36") ROAD WORK AHEAD (2)		18.00	0014	01
		W20-2 (36"X36") DETOUR AHEAD (2)		18.00	0014	01
		W20-3 (36"X36") ROAD CLOSED AHEAD (7)		63.00	0014	01
		GORTON RR BR. 841				
		G20-2 (48"X24") END ROAD WORK R.I. STD. 27.1.1 (36"X54") WORK ZONE TRAFFIC FINES		8.00	0014	01
		W1-4R (36"X36")		9.00	0014	01
		W20-1 (36"X36") ROAD WORK AHEAD		9.00	0014	01
		W20-5L (36"X36") LEFT LANE CLOSED AHEAD		9.00	0014	01

Distribution of Quantities

Project Name - Statewide Bridge Repairs Contract 4 - Amtrak Bridges
 Estimate Name - Statewide Bridge Repair Contract 4 (including AMTRAK Crossings) -
 Addendum 1
 R.I. Contract No. - 2019-CB-011
 FAP Nos: BHO-0243(002)

Item No.	Item Code	Description	UM	Qty.	Pay Code	Seq. No.
073	922.0100	Cont.				
		W20-5R (36"X36") RIGHT LANE		9.00	0014	01
		CLOSED AHEAD				
		W4-2L (36"X36") LEFT LANE		9.00	0014	01
		CLOSED AHEAD				
		W4-2R (36"X36") RIGHT LANE		9.00	0014	01
		CLOSED AHEAD				
		LAFAYETTE RR BRIDGE NO. 243				
		G20-2 (48"X24") END ROAD WORK		32.00	0014	01
		R.I. STD 27.1.1 (48"X72")		96.00	0014	01
		TRAFFIC FINES DOUBLED				
		R4-9 (36"X48") STAY IN LANE		48.00	0014	01
		SPECIAL (48"X48") LANE SPLIT		64.00	0014	01
		W12-1 (48"X48") LANE SPLIT		64.00	0014	01
		W13-1 (30"X30") 40 M.P.H		25.00	0014	01
		W1-4L (48"X48") LANE SHIFT		64.00	0014	01
		LEFT				
		W1-4R (48"X48") LANE SHIFT		64.00	0014	01
		RIGHT				
		W20-1 (48"X48") ROAD WORK 1		64.00	0014	01
		MILE				
Item 922.0100 Total:				1,678.00		
074	923.0105	DRUM BARRICADE STANDARD 26.2.0	B DAY			
		BRIDGE NO. 772				
		PHASE 1,2,3		18,250.00	0014	01
		GORTON RR BR. 841				
		ROUTE 1 SOUTHBOUND		4,800.00	0014	01
		LAFAYETTE RR BRIDGE NO. 243				
		PROJECT WIDE PHASE 1, 2, AND		29,930.00	0014	01
		3				
Item 923.0105 Total:				52,980.00		
075	923.0120	PLASTIC PIPE BARRICADE STANDARD	EACH			

Distribution of Quantities

Project Name - Statewide Bridge Repairs Contract 4 - Amtrak Bridges
 Estimate Name - Statewide Bridge Repair Contract 4 (including AMTRAK Crossings) -
 Addendum 1

R.I. Contract No. - 2019-CB-011

FAP Nos: BHO-0243(002)

Item No.	Item Code	Description	UM	Qty.	Pay Code	Seq. No.
075	923.0120	Cont. 26.3.0				
		CORONADO RD. BRIDGE NO. 834				
		CORONADO RD.		4.00	0014	01
Item 923.0120 Total:				4.00		
076	923.0200	FLUORESCENT TRAFFIC CONES STANDARD EACH				
		26.1.0				
		BRIDGE 243				
		TRAFFIC CONTROL SET-UP		100.00	0014	01
		BRIDGE 834				
		ROAD CLOSURE		25.00	0014	01
		BRIDGE 841				
		TRAFFIC CONTROL SET-UP		100.00	0014	01
		BRIDGE NO. 772				
		TEMPORARY TRAFFIC CONTROL		100.00	0014	01
Item 923.0200 Total:				325.00		
077	924.0113	ADVANCE WARNING ARROW PANEL	PDAY			
		BRIDGE NO. 243				
		PHASE 2		240.00	0014	01
		BRIDGE NO. 772				
		AIRPORT CONNECTOR ROAD		730.00	0014	01
		GORTON RR BR. 841				
		ROUTE 1 SOUTHBOUND		240.00	0014	01
Item 924.0113 Total:				1,210.00		
078	925.0112	PORTABLE CHANGEABLE MESSAGE SIGN	PDAY			
		LAFAYETTE RR BRIDGE NO. 243				
		ROUTE 4 NORTHBOUND		365.00	0014	01
		ROUTE 4 SOUTHBOUND		365.00	0014	01
Item 925.0112 Total:				730.00		
079	926.0121	UNANCHORED PRECAST CONCRETE	LF			

Distribution of Quantities

Project Name - Statewide Bridge Repairs Contract 4 - Amtrak Bridges
 Estimate Name - Statewide Bridge Repair Contract 4 (including AMTRAK Crossings) -
 Addendum 1
 R.I. Contract No. - 2019-CB-011
 FAP Nos: BHO-0243(002)

Item No.	Item Code	Description	UM	Qty.	Pay Code	Seq. No.
079	926.0121	Cont. BARRIER FOR TEMPORARY TRAFFIC				
		CONTROL STANDARD 40.5.0				
		BRIDGE NO. 772				
		PHASE 1		520.00	0014	01
		PHASE 2		880.00	0014	01
		PHASE 3		520.00	0014	01
		GORTON RR BR. 841				
		PHASE 1		240.00	0014	01
		PHASE 2		240.00	0014	01
		LAFAYETTE RR BRIDGE NO. 243				
		PHASE 1		580.00	0014	01
		PHASE 2		1,000.00	0014	01
		PHASE 3		580.00	0014	01
Item 926.0121 Total:				4,560.00		
080	926.0140	REFLECTIVE DELINEATORS FOR	EACH			
		TEMPORARY CONCRETE BARRIERS				
		BRIDGE NO. 772				
		PHASE 1		14.00	0014	01
		PHASE 2		28.00	0014	01
		PHASE 3		14.00	0014	01
		GORDON RR BRIDGE 841				
		PHASE 1		7.00	0014	01
		PHASE 2		7.00	0014	01
		LAFAYETTE RR BRIDGE NO. 243				
		PHASE 1		16.00	0014	01
		PHASE 2		28.00	0014	01
		PHASE 3		16.00	0014	01
Item 926.0140 Total:				130.00		
081	926.9901	ANCHORED BARRIER FOR TEMPORARY	LF			
		TRAFFIC CONTROL				
		BRIDGE NO. 243				

Distribution of Quantities

Project Name - Statewide Bridge Repairs Contract 4 - Amtrak Bridges
 Estimate Name - Statewide Bridge Repair Contract 4 (including AMTRAK Crossings) -
 Addendum 1
 R.I. Contract No. - 2019-CB-011
 FAP Nos: BHO-0243(002)

Item No.	Item Code	Description	UM	Qty.	Pay Code	Seq. No.
081	926.9901	Cont.				
		BRIDGE NO. 243		320.00	0014	01
		BRIDGE NO. 772				
		BRIDGE NO. 772		320.00	0014	01
		BRIDGE NO. 841				
		BRIDGE NO. 841		80.00	0014	01
Item 926.9901 Total:				720.00		
082	928.9901	TRUCK MOUNTED ATTENUATOR (TMA)	HRS			
		WITH TRUCK MOUNTED FLASHING ARROW BOARD (TMFAB)				
		BRIDGE NO. 772				
		TEMPORARY TRAFFIC CONTROL		128.00	0014	01
		GORDON RR BRIDGE 841				
		TEMPORARY TRAFFIC CONTROL		80.00	0014	01
		LAFAYETTE RR BRIDGE NO. 243				
		TEMPORARY TRAFFIC CONTROL		128.00	0014	01
Item 928.9901 Total:				336.00		
083	929.0110	FIELD OFFICE	PMO			
		ALL WORK ZONES				
		ALL WORK ZONES		24.00	0014	01
Item 929.0110 Total:				24.00		
084	931.0110	CLEANING AND SWEEPING PAVEMENT	HSY			
		ALL WORK ZONES				
		ALL WORK ZONES		330.00	0014	01
Item 931.0110 Total:				330.00		
085	932.0100	CUTTING AND MATCHING ASPHALT	LF			
		BRIDGE NO. 243				
		BRIDGE NO. 243		185.00	0014	01
		BRIDGE NO. 772				
		BRIDGE NO. 772		210.00	0014	01

Distribution of Quantities

Project Name - Statewide Bridge Repairs Contract 4 - Amtrak Bridges
 Estimate Name - Statewide Bridge Repair Contract 4 (including AMTRAK Crossings) -
 Addendum 1

R.I. Contract No. - 2019-CB-011

FAP Nos: BHO-0243(002)

Item No.	Item Code	Description	UM	Qty.	Pay Code	Seq. No.
085	932.0100	Cont.				
		BRIDGE NO. 834				
		BRIDGE NO. 834		60.00	0014	01
		BRIDGE NO. 841				
		BRIDGE NO. 841		80.00	0014	01
Item 932.0100 Total:				535.00		
086	932.0200	FULL-DEPTH SAWCUT OF BITUMINOUS PAVEMENT	LF			
		BRIDGE NO. 243				
		BRIDGE NO. 243		230.00	0014	01
Item 932.0200 Total:				230.00		
087	935.0400	REMOVING BITUMINOUS PAVEMENT BY MICRO MILLING	SY			
		BRIDGE NO. 243				
		ROUTE 4 NB		6,470.00	0014	01
		ROUTE 4 SB		6,470.00	0014	01
		BRIDGE NO. 772				
		BRIDGE NO. 772		430.00	0014	01
		BRIDGE NO. 834				
		BRIDGE NO. 834		160.00	0014	01
		BRIDGE NO. 841				
		BRIDGE NO. 841		300.00	0014	01
Item 935.0400 Total:				13,830.00		
088	936.0110	MOBILIZATION	LS			
		ALL WORK ZONES				
		ALL WORK ZONES		1.00	0014	01
Item 936.0110 Total:				1.00		
089	937.0200	MAINTENANCE AND MOVEMENT TRAFFIC PROTECTION	LS			
		PROJECTWIDE				

Distribution of Quantities

Project Name - Statewide Bridge Repairs Contract 4 - Amtrak Bridges
 Estimate Name - Statewide Bridge Repair Contract 4 (including AMTRAK Crossings) -
 Addendum 1
 R.I. Contract No. - 2019-CB-011
 FAP Nos: BHO-0243(002)

Item No.	Item Code	Description	UM	Qty.	Pay Code	Seq. No.
089	937.0200	Cont. PER SPECIFICATION		1.00	0014	01
				Item 937.0200 Total:		1.00
S090	T20.0006	6 INCH WHITE FAST - DRYING	LF			
WATERBORNE PAVEMENT MARKING PAINT						
BRIDGE NO. 772						
		PHASE 1		180.00	0014	01
		PHASE 2		2,870.00	0014	01
		PHASE 3		2,440.00	0014	01
BRIDGE NO. 841						
		PHASE 1		640.00	0014	01
		PHASE 2		370.00	0014	01
LAFAYETTE RR BRIDGE NO. 243						
		PHASE 1 NORTHBOUND		2,650.00	0014	01
		PHASE 1 SOUTHBOUND		2,650.00	0014	01
		PHASE 2 NORTHBOUND		3,975.00	0014	01
		PHASE 2 SOUTHBOUND		3,975.00	0014	01
		PHASE 3 NORTHBOUND		2,650.00	0014	01
		PHASE 3 SOUTHBOUND		2,650.00	0014	01
				Item T20.0006 Total:		25,050.00
S091	T20.0012	12 INCH WHITE FAST - DRYING	LF			
WATERBORNE PAVEMENT MARKING PAINT						
BRIDGE NO. 772						
		PHASE 1		445.00	0014	01
		PHASE 2		300.00	0014	01
		PHASE 3		925.00	0014	01
				Item T20.0012 Total:		1,670.00
S092	T20.0106	6 INCH YELLOW FAST - DRYING	LF			
WATERBORNE PAVEMENT MARKING PAINT						
BRIDGE NO. 772						
		EB LANE PHASE 1		1,050.00	0014	01

Distribution of Quantities

Project Name - Statewide Bridge Repairs Contract 4 - Amtrak Bridges
 Estimate Name - Statewide Bridge Repair Contract 4 (including AMTRAK Crossings) -
 Addendum 1
 R.I. Contract No. - 2019-CB-011
 FAP Nos: BHO-0243(002)

Item No.	Item Code	Description	UM	Qty.	Pay Code	Seq. No.
S092	T20.0106	Cont.				
		WB LANE PHASE 1		1,050.00	0014	01
		BRIDGE NO. 841				
		PHASE 2		640.00	0014	01
		LAFAYETTE RR BRIDGE NO. 243				
		PHASE 1 NORTHBOUND		1,325.00	0014	01
		PHASE 1 SOUTHBOUND		1,325.00	0014	01
		PHASE 2 NORTHBOUND		1,325.00	0014	01
		PHASE 2 SOUTHBOUND		1,325.00	0014	01
		PHASE 3 NORTHBOUND		1,325.00	0014	01
		PHASE 3 SOUTHBOUND		1,325.00	0014	01
Item T20.0106 Total:				10,690.00		
S093	T20.1000	REMOVE EXISTING PAVEMENT MARKINGS	LF			
		BRIDGE NO. 772				
		EXISTING MARKINGS		2,960.00	0014	01
		FROM ITEM T20.0006		5,490.00	0014	01
		FROM ITEM T20.0012		1,670.00	0014	01
		FROM ITEM T20.0106		2,100.00	0014	01
		BRIDGE NO. 841				
		PHASE 1		780.00	0014	01
		PHASE 2		1,650.00	0014	01
		LAFAYETTE RR BRIDGE NO. 243				
		EXISTING MARKING NB		3,975.00	0014	01
		EXISTING MARKING SB		3,975.00	0014	01
		PHASE 1 NORTHBOUND		2,990.00	0014	01
		PHASE 1 SOUTHBOUND		2,990.00	0014	01
		PHASE 2 NORTHBOUND		3,975.00	0014	01
		PHASE 2 SOUTHBOUND		3,975.00	0014	01
		PHASE 3 NORTHBOUND		5,300.00	0014	01
		PHASE 3 SOUTHBOUND		5,300.00	0014	01
Item T20.1000 Total:				47,130.00		
S094	T20.2006	6 INCH EPOXY RESIN PAVEMENT	LF			

Distribution of Quantities

Project Name - Statewide Bridge Repairs Contract 4 - Amtrak Bridges
 Estimate Name - Statewide Bridge Repair Contract 4 (including AMTRAK Crossings) -
 Addendum 1

R.I. Contract No. - 2019-CB-011

FAP Nos: BHO-0243(002)

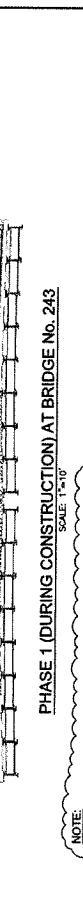
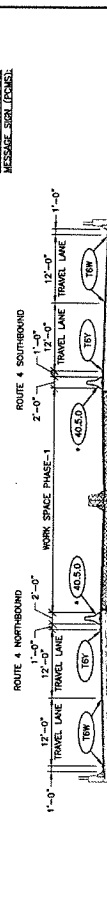
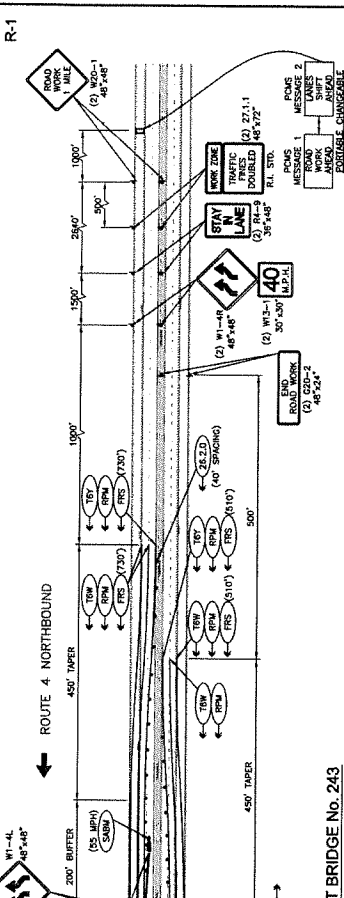
Item No.	Item Code	Description	UM	Qty.	Pay Code	Seq. No.
S094	T20.2006	Cont. MARKINGS WHITE				
		BRIDGE 834				
		FINAL STRIPE		150.00	0014	01
		BRIDGE NO. 772				
		EB LANE LINES		280.00	0014	01
		EB SHOULDER LINE		1,100.00	0014	01
		WB LANE LINES		350.00	0014	01
		WB SHOULDER LINE		1,100.00	0014	01
		GORDON RR BRIDGE 841				
		SB LANE LINE		100.00	0014	01
		SB SHOULDER LINE		370.00	0014	01
		LAFAYETTE RR BRIDGE NO. 243				
		NB LANE LINE		340.00	0014	01
		NB SHOULDER LINE		1,325.00	0014	01
		SB LANE LINE		340.00	0014	01
		SB SHOULDER LINE		1,325.00	0014	01
Item T20.2006 Total:				6,780.00		
S095	T20.2012	12 INCH EPOXY RESIN PAVEMENT	LF			
		MARKINGS WHITE				
		BRIDGE NO. 772				
		EB GORE		600.00	0014	01
		WB GORE		400.00	0014	01
Item T20.2012 Total:				1,000.00		
S096	T20.2014	4 INCH EPOXY RESIN PAVEMENT	LF			
		MARKINGS YELLOW				
		BRIDGE 834				
		FINAL STRIPE		150.00	0014	01
Item T20.2014 Total:				150.00		
S097	T20.2016	6 INCH EPOXY RESIN PAVEMENT	LF			
		MARKINGS YELLOW				

Distribution of Quantities

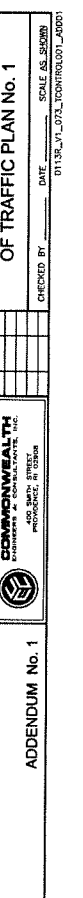
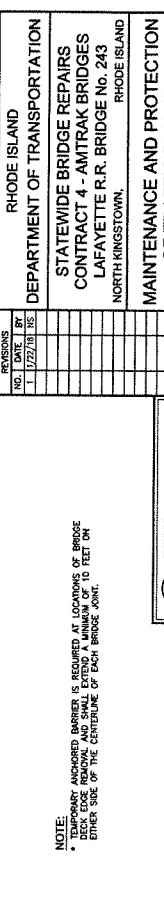
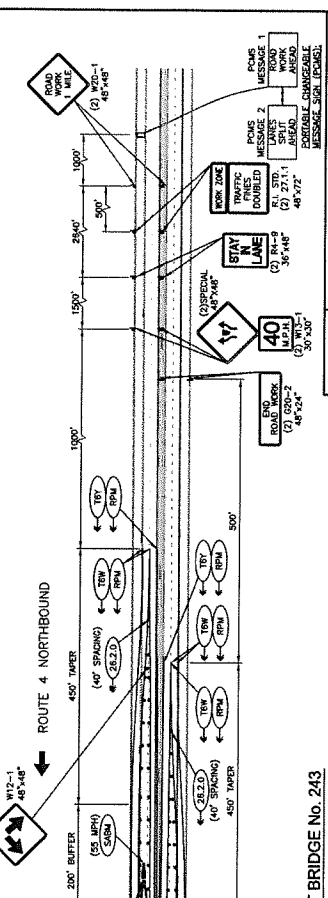
Project Name - Statewide Bridge Repairs Contract 4 - Amtrak Bridges
 Estimate Name - Statewide Bridge Repair Contract 4 (including AMTRAK Crossings) -
 Addendum 1
 R.I. Contract No. - 2019-CB-011
 FAP Nos: BHO-0243(002)

Item No.	Item Code	Description	UM	Qty.	Pay Code	Seq. No.
S097	T20.2016 Cont.	BRIDGE NO. 772				
		EB SHOULDER		1,100.00	0014	01
		WB SHOULDER		1,100.00	0014	01
		GORDON RR BRIDGE 841				
		SB SHOULDER		640.00	0014	01
		LAFAYETTE RR BRIDGE NO. 243				
		NB SHOULDER		1,325.00	0014	01
		SB SHOULDER		1,325.00	0014	01
Item T20.2016 Total:				5,490.00		

REV.	DATE	BY	REASON
1	2018	RI	ISSUE FOR PERMITS
2	2018	RI	ISSUE FOR PERMITS
3	2018	RI	ISSUE FOR PERMITS
4	2018	RI	ISSUE FOR PERMITS
5	2018	RI	ISSUE FOR PERMITS
6	2018	RI	ISSUE FOR PERMITS
7	2018	RI	ISSUE FOR PERMITS
8	2018	RI	ISSUE FOR PERMITS



NOTE:
THE CONTRACTOR SHALL PROVIDE SEDIMENTATION CONTROL FOR CATCH BASINS ALONG THE EAST FOLLOWING NORTHBOUND - 6 FEET EAST OF BRIDGE AND 2 FEET WEST OF BRIDGE. THE CATCH BASINS SHALL BE CLEANED AND THE CONNECTING PIPES SHALL BE CLEANED AND FLUSHED.



LEGEND:

- DRUM BARRICADES STANDARD 28.2.0
- UNANCHORED PRECAST CONCRETE BARRIER FOR TEMPORARY TRAFFIC CONTROL STANDARD 40.5.0
- APPROVED TEMPORARY TRAFFIC SIGN SUPPORT
- DIRECTION OF TRAFFIC FLOW
- ADVANCE WARNING ARROW PANEL
- POLICE CRUISER WITH FLASHING LIGHT BAR
- WORK SPACE IN THIS PHASE
- PORTABLE CHANGEABLE MESSAGE SIGN (PCMS)
- 6" YELLOW FAST DRYING WATERBORNE PAVEMENT MARKING PAINT
- 6" WHITE FAST DRYING WATERBORNE PAVEMENT MARKING PAINT
- 17" WHITE FAST DRYING WATERBORNE PAVEMENT MARKING PAINT
- SHOCK ABSORBING BARRIER MODULES
- REMOVE PAVEMENT MARKINGS
- MICRO MILLING AND FILL RUBBLE STRIP WITH CLASS 12.5 HOT MIX ASPHALT
- PARTIAL DEPTH SAWCUT (SD) AND REMOVAL OF PAVEMENT BY MICRO MILLING. APPLY ASPHALT EMULSION TACK COAT AND 1/2" FRACTION COURSE.
- CUT RUBBLE STRIP LEFT AND RIGHT SHOULDERS (NOT ON BRIDGE).

INSTALL PORTABLE CHANGEABLE MESSAGE SIGNS (PCMS) TO INDICATE CONSTRUCTION AND MESSAGE PATTERNS FOR THIS PROJECT. MESSAGE PATTERNS SHALL BE CHANGED WHEN NECESSARY.

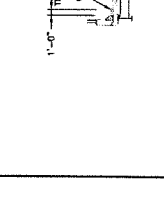
NOTE:
PCMS MESSAGES ASSIGNED BARRIERS IS REQUIRED AT LOCATIONS OF BRIDGE DECK EDGE REMOVAL AND SHALL EXTEND A MINIMUM OF 10 FEET ON EITHER SIDE OF THE CENTRELINE OF EACH BRIDGE JOINT.

NO.	DATE	BY	REASONS
1	1/27/18	US	

DEPARTMENT OF TRANSPORTATION
STATEWIDE BRIDGE REPAIRS
CONTRACT 4 - AMTRAK BRIDGES
LAFAYETTE R.R. BRIDGE No. 243
NORTH KINGSTOWN, RHODE ISLAND

MAINTENANCE AND PROTECTION OF TRAFFIC PLAN No. 1

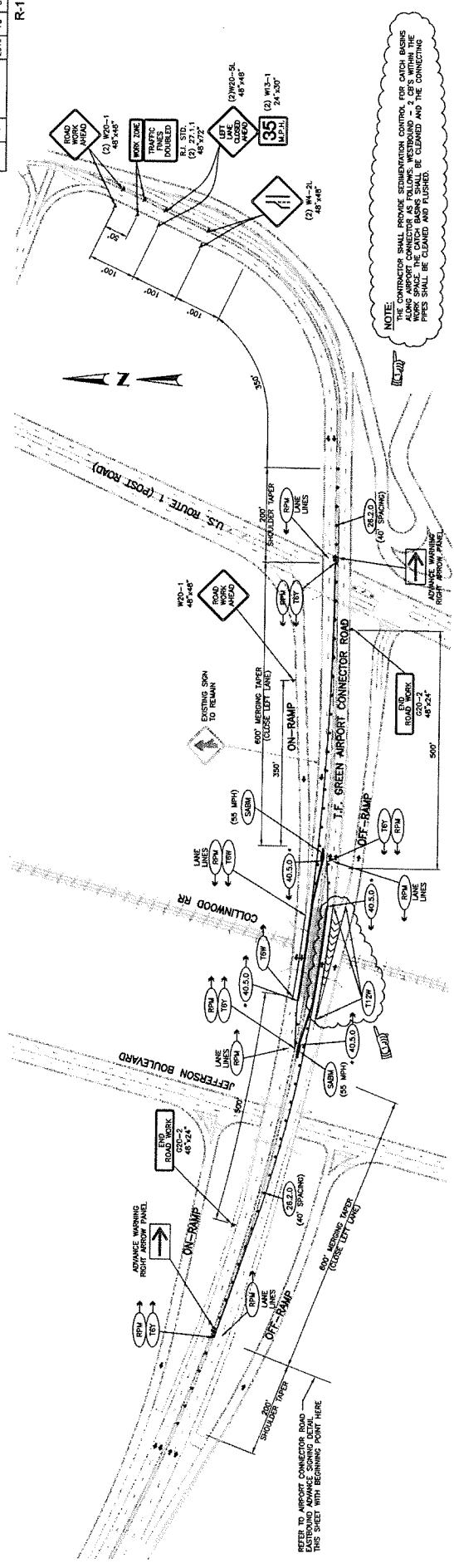
CHECKED BY: _____ DATE: _____ SCALE AS SHOWN



ADDENDUM No. 1

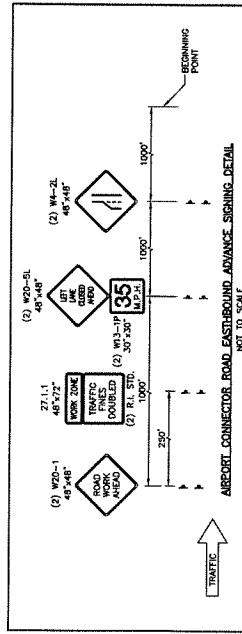
REV.	DATE	BY	DESCRIPTION	DATE	BY
1	01/27/18	RI	ISSUE FOR PERMIT	01/27/18	RI
2	02/19/18	RI	REVISED	02/19/18	RI
3	02/27/18	RI	REVISED	02/27/18	RI
4	03/01/18	RI	REVISED	03/01/18	RI

R-1



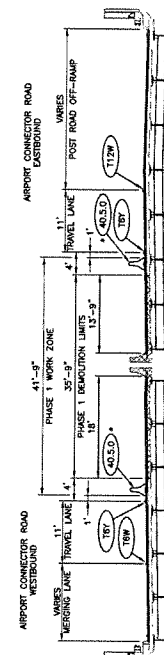
LEFT LANE CLOSURE ON AIRPORT CONNECTOR ROAD FOR PHASE 1 CONSTRUCTION ON BRIDGE NO. 772

SCALE: 1"=100'



LEGEND:

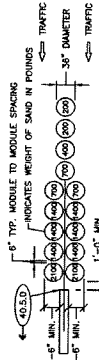
- DRUM BARRICADES STANDARD 24.2.0
- ▬ UNCONCRETE PRECAST CONCRETE BARRIER FOR UNCONCRETE PRECAST CONCRETE BARRIER
- ▬ APPROVED TEMPORARY TRAFFIC SIGN SUPPORT
- DIRECTION OF TRAFFIC FLOW
- ⚡ ADVANCE WARNING LIGHT BAR
- ⚡ POLICE CRUISER WITH FLASHING LIGHT BAR
- ⚡ WORK SPACE IN THIS PHASE
- ⚡ PORTABLE CHANGEABLE MESSAGE SIGN (PCMS)
- ⚡ 6" YELLOW FAST DRYING WATERBORNE PAVEMENT MARKING PAINT
- ⚡ 6" WHITE FAST DRYING WATERBORNE PAVEMENT MARKING PAINT
- ⚡ 12" WHITE FAST DRYING WATERBORNE PAVEMENT MARKING PAINT
- ⚡ SHOCK ABSORBING BARRIER MODULES
- ⚡ REMOVE PAVEMENT MARKINGS



PHASE 1 TRANSVERSE SECTION - LOOKING EAST

SCALE: 1"=10'

NOTE: ALL DIMENSIONS UNLESS OTHERWISE SPECIFIED ARE IN FEET AND INCHES. ALL DIMENSIONS SHALL BE EXTENDED TO THE CENTERLINE OF EACH BRIDGE JOINT.



TYPICAL DETAIL
SHOCK ABSORBING BARRIER MODULES
55 MPH DESIGN VELOCITY
NOT TO SCALE

REV.	DATE	BY	DESCRIPTION
1	01/27/18	RI	ISSUE FOR PERMIT

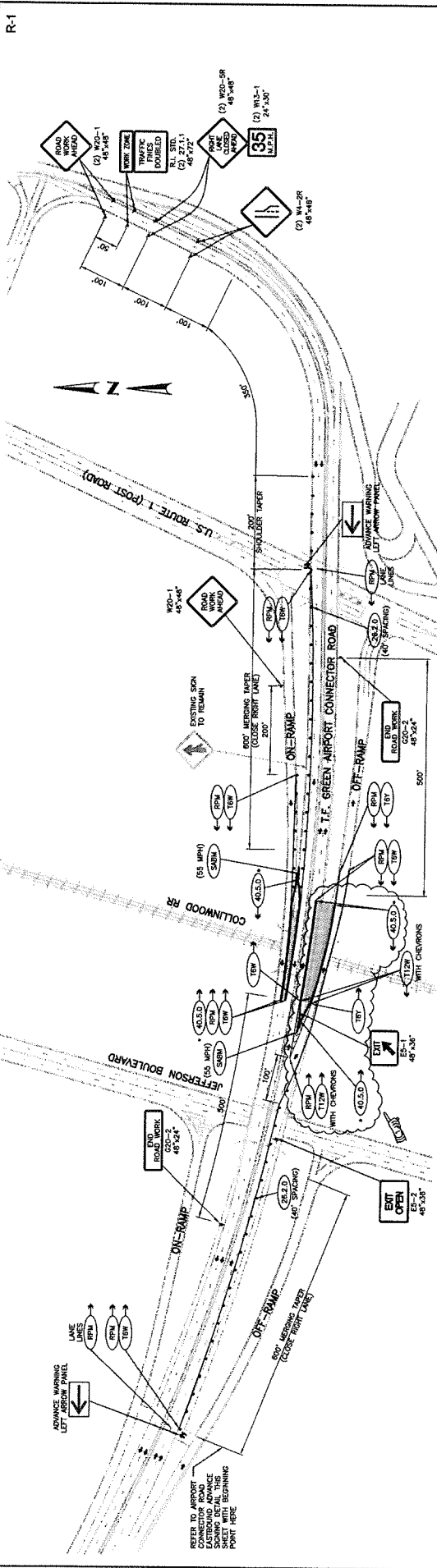
RHODE ISLAND
DEPARTMENT OF TRANSPORTATION
STATEWIDE BRIDGE REPAIRS
CONTRACT 4 - AMTRAK BRIDGES
COLLINGWOOD R.R. BRIDGE No. 772
WARWICK, RHODE ISLAND
MAINTENANCE AND PROTECTION
OF TRAFFIC PLAN No. 3
AIRPORT CONNECTOR ROAD



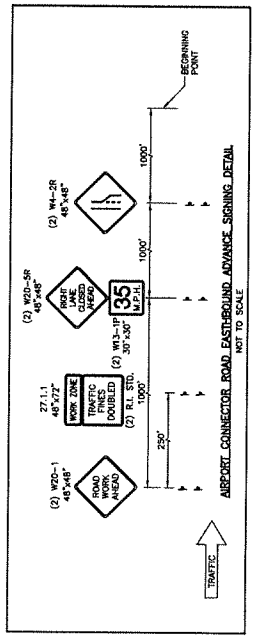
ADDENDUM No. 1

CHECKED BY: _____ DATE: _____ SCALE AS SHOWN
01136_V1_076_CONTROL003_0001

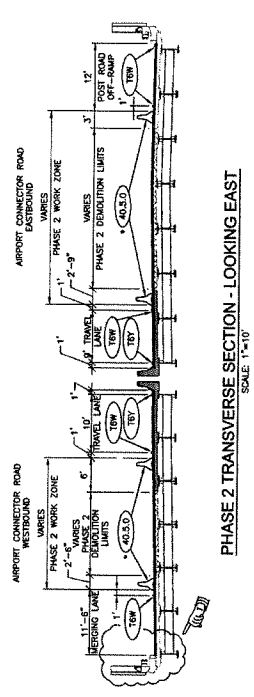
TO: STATE	DATE: 03/19/18	BY: R1	SCALE: AS SHOWN
FROM: R-1	NO. 1	REV. 1	DATE: 03/19/18



RIGHT LANE CLOSURE ON AIRPORT CONNECTOR ROAD FOR PHASE 2 CONSTRUCTION ON BRIDGE NO. 772
SCALE: 1"=100'

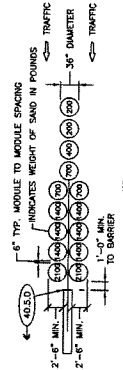


- LEGEND:**
- ORIM BARCODES STANDARD 26.2.0
 - UNANCHORED PRECAST CONCRETE BARRIER FOR TEMPORARY TRAFFIC CONTROL STANDARD 40.5.0
 - APPROVED TEMPORARY TRAFFIC SIGN SUPPORT
 - DIRECTION OF TRAFFIC FLOW
 - ADVANCE WARNING LEFT ARROW PANEL
 - POLICE CRUISER WITH FLASHING LIGHT BAR
 - WORK SPACE IN THIS PHASE
 - PORTABLE CHANGEBLANK MESSAGE SIGN (POMS)
 - 6" YELLOW FAST DRYING WATERBORNE PAVEMENT MARKING PAINT
 - 6" WHITE FAST DRYING WATERBORNE PAVEMENT MARKING PAINT
 - 12" WHITE FAST DRYING WATERBORNE PAVEMENT MARKING PAINT
 - SHOCK ABSORBING BARRIER MODULES
 - REMOVE PAVEMENT MARKINGS



PHASE 2 TRANSVERSE SECTION - LOOKING EAST
SCALE: 1"=10'

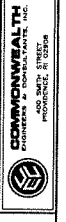
NOTE:
* SHOCK ABSORBING BARRIER IS REQUIRED AT ENDPOINTS OF BRIDGE AND AT 10 FEET ON EITHER SIDE OF THE CENTERLINE OF EACH BRIDGE JOINT.



TYPICAL DETAIL
SHOCK ABSORBING BARRIER MODULES
55 MPH DESIGN VELOCITY
NOT TO SCALE

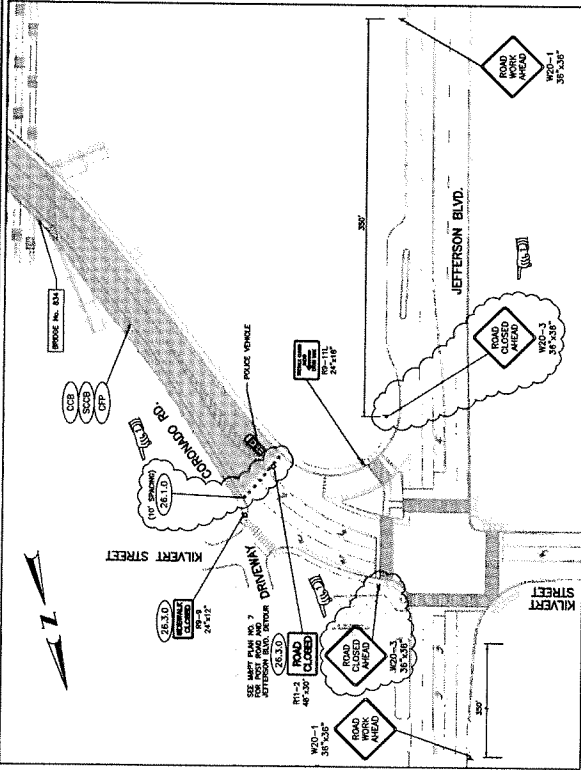
NO.	DATE	BY	REVISIONS
1	1/22/18	NS	

RHODE ISLAND
DEPARTMENT OF TRANSPORTATION
STATEWIDE BRIDGE REPAIRS
CONTRACT 4 - AMTRAK BRIDGES
COLLINGWOOD R.R. BRIDGE NO. 772
WARWICK, RHODE ISLAND
MAINTENANCE AND PROTECTION
OF TRAFFIC PLAN No. 4
AIRPORT CONNECTOR ROAD

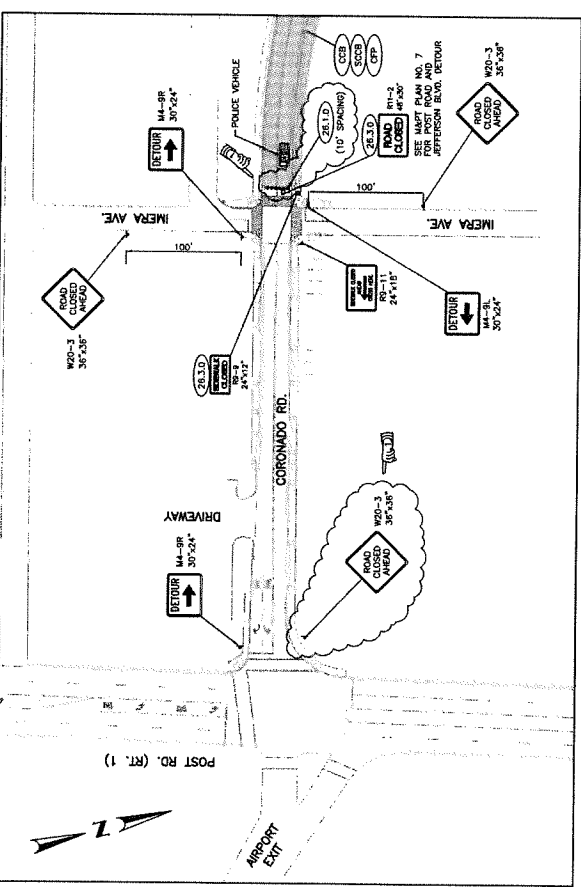


ADDENDUM No. 1
CHECKED BY: DATE: SCALE AS SHOWN

DATE	2019	78	6
ISSUE NO.	1		
ISSUE DATE			
ISSUE BY			
ISSUE FOR			



DETAIL "A"
SCALE: 1"=50'



DETAIL "B"
SCALE: 1"=50'

NOTES:

1. ALL TRAFFIC CONTROL DEVICES AND TEMPORARY TRAFFIC CONTROL ZONE ACTIVITIES SHALL MEET THE REQUIREMENTS OF THE MANUAL ON UNIFORM TRAFFIC CONTROL DEVICES (MUTCD) 2009 EDITION.
2. TEMPORARY CONSTRUCTION SIGNS AND BARRICADES SHALL BE IN PLACE PRIOR TO THE START OF WORK IN ANY SECTION OPEN TO TRAFFIC.
3. ALL SIGNS AND BARRICADES ARE TO BE PLACED AND RELOCATED AS SHOWN ON THE PLANS OR AS DIRECTED BY THE ENGINEER.
4. CONES SHOULD BE USED WHEN A TRAFFIC CONTROL SET UP IS UTILIZED ONLY DURING WORKING HOURS AND IT IS SUBSEQUENTLY BROKEN DOWN AT THE END OF THE WORKDAY.
5. THE CONTRACTOR MUST REQUEST THE CITY POLICE OFFICERS FOR TRAFFIC CONTROL UNLESS APPROVED OTHERWISE BY RIOT.
6. SIGN MOUNTINGS SHALL BE IN ACCORDANCE WITH THE R.I. SPECIFICATIONS FOR TEMPORARY CONSTRUCTION SIGNS.
7. THE CONTRACTOR SHALL NOTIFY THE RI DEPARTMENT OF TRANSPORTATION AT LEAST SEVEN (7) CALENDAR DAYS PRIOR TO THE COMMENCEMENT OF THE ACTUAL FIELD WORK.
8. CONTRACTOR SHALL MAINTAIN ALL DRIVEWAY ACCESS WITHIN THE PROJECT LIMITS.
9. THE CONTRACTOR SHALL PROVIDE SEDIMENTATION CONTROL FOR CATCH BASINS ON CORONADO ROAD AS FOLLOWS: 2 CFS ADJACENT TO THE BRIDGE. THE CATCH BASINS SHALL BE CLEANED AND THE CONNECTING PIPES SHALL BE CLEANED AND FLUSHED.

LEGEND

- ▲ RIOT APPROVED TEMPORARY SIGN SUPPORT
- FLUORESCENT TRAFFIC CONES R.I. STD. 26.1.0
- PLASTIC PIPE BARRICADE R.I. STD. 26.3.0
- DIRECTION OF TRAFFIC FLOW
- ☒ POLICE VEHICLE
- ▭ WORK SPACE
- SEDIMENTATION CONTROL - CATCH BASIN

REVISIONS	NO.	DATE	BY
	1	1/22/19	NS

RHODE ISLAND
DEPARTMENT OF TRANSPORTATION
STATEWIDE BRIDGE REPAIRS
CONTRACT 4 - AMTRAK BRIDGES
CORONADO ROAD BRIDGE NO. 834
WARWICK, RHODE ISLAND



ADDENDUM No. 1

MAINTENANCE & PROTECTION
OF TRAFFIC PLAN NO. 6

CHECKED BY: _____ DATE: _____ SCALE AS SHOWN
0113R_VI_07E_CONTR006_A001

NO.	DATE	BY	REVISIONS
1	7/27/18	IS	

NO.	DATE	BY	REVISIONS
1	7/27/18	IS	

NO.	DATE	BY	REVISIONS
1	7/27/18	IS	

NO.	DATE	BY	REVISIONS
1	7/27/18	IS	

NO.	DATE	BY	REVISIONS
1	7/27/18	IS	

NO.	DATE	BY	REVISIONS
1	7/27/18	IS	

NO.	DATE	BY	REVISIONS
1	7/27/18	IS	

NO.	DATE	BY	REVISIONS
1	7/27/18	IS	

NO.	DATE	BY	REVISIONS
1	7/27/18	IS	

NO.	DATE	BY	REVISIONS
1	7/27/18	IS	

STATEWIDE BRIDGE REPAIRS
CONTRACT 4 - AMTRAK BRIDGES
CORONADO ROAD BRIDGE No. 834
WARRICK, RHODE ISLAND

MAINTENANCE & PROTECTION
OF TRAFFIC PLAN NO. 7

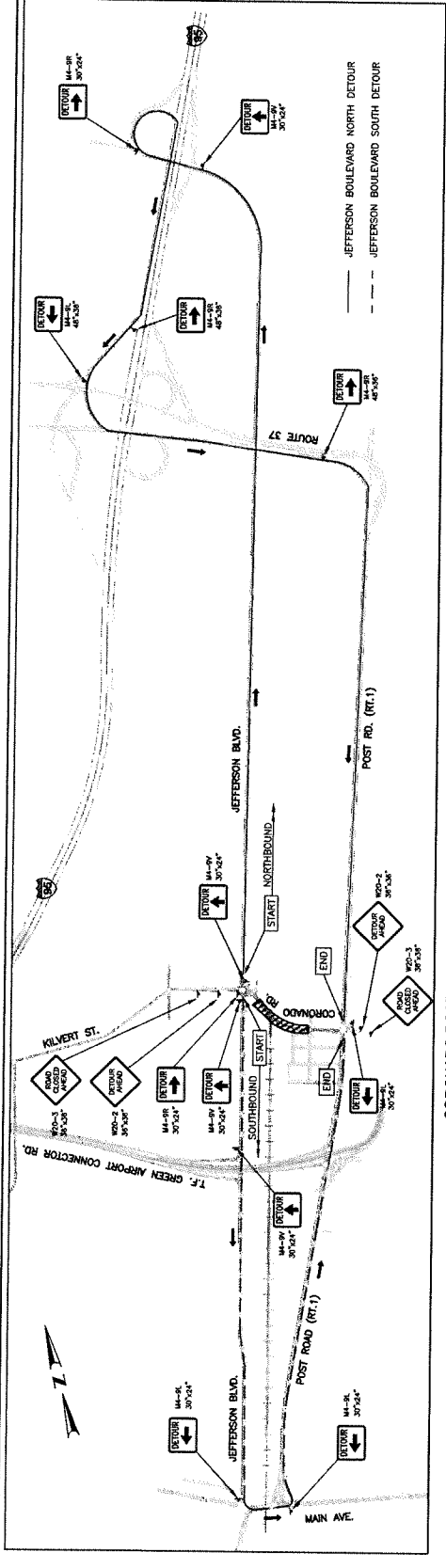
RHODE ISLAND
DEPARTMENT OF TRANSPORTATION

DATE: 11-20-2017
CHECKED BY: [Signature]

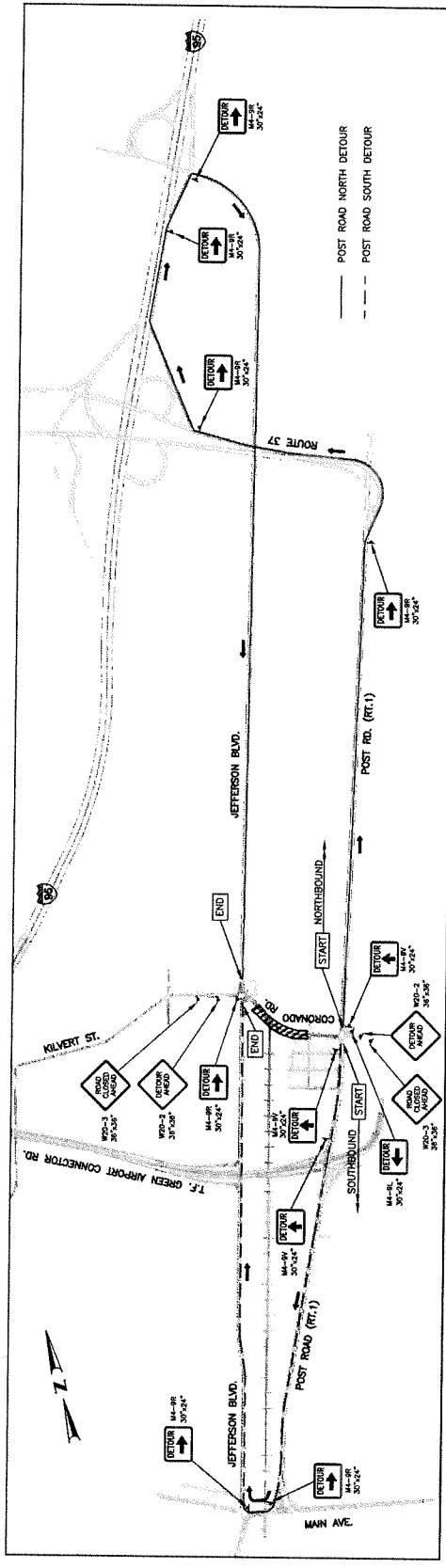
ADDENDUM No. 1

COMPUTATIONAL LTD.
100 SOUTH STREET
PROVIDENCE, RI 02903

01136_V1_079_CONTR007_000



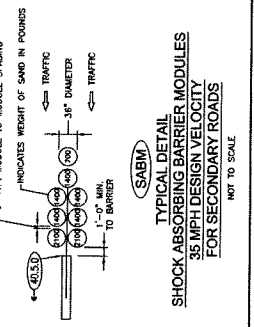
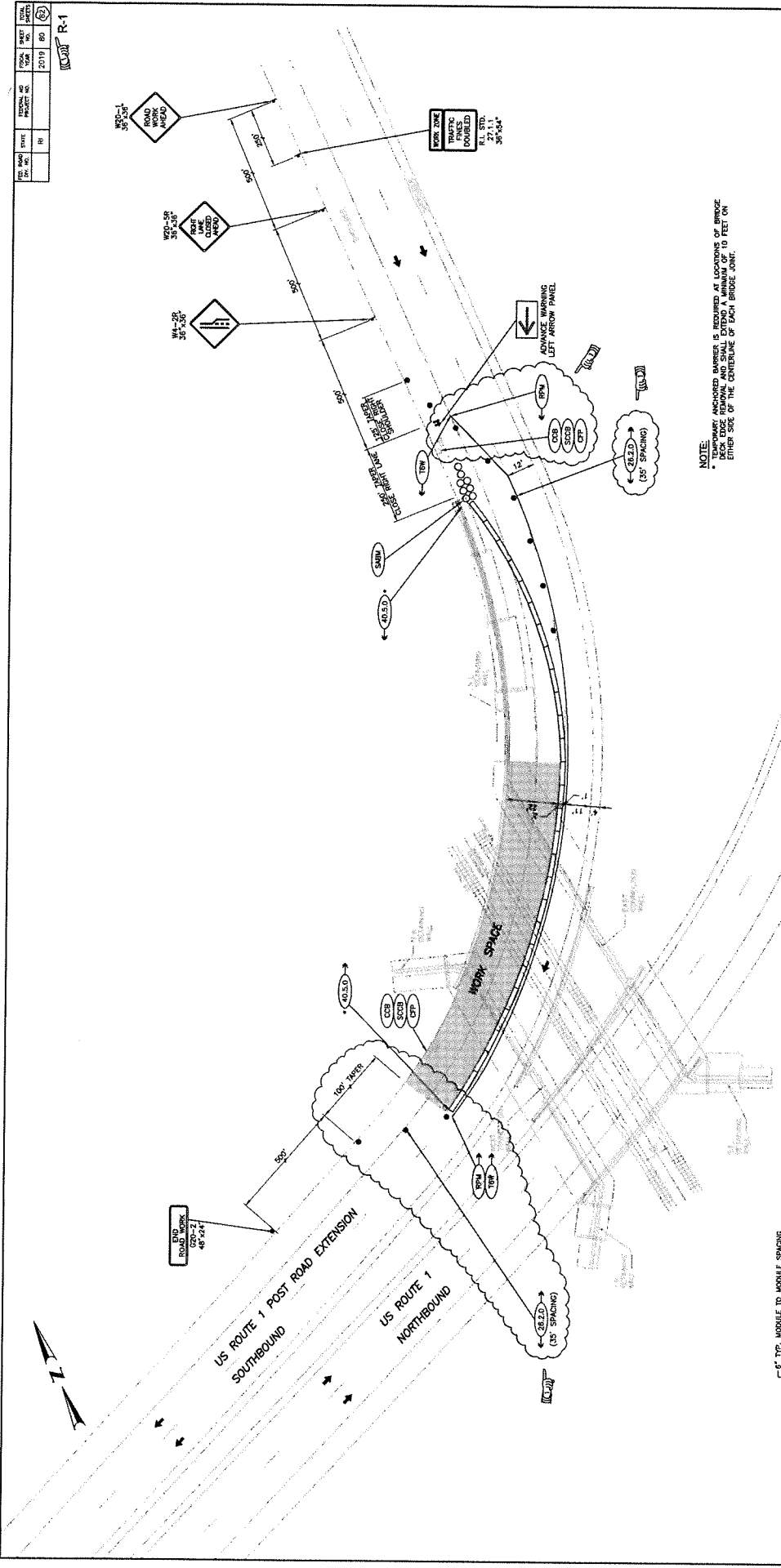
CORONADO ROAD DETOUR - JEFFERSON BOULEVARD NORTH & SOUTH DETOUR
NOT TO SCALE



CORONADO ROAD DETOUR - POST ROAD NORTH & SOUTH DETOUR
NOT TO SCALE

DATE	2019	80
PROJECT	RI	
SCALE	AS SHOWN	
DESIGNER	RI	
CHECKED BY		
DATE		
PROJECT NO.	2019	80
SHEET NO.	1	1

R-1



CONSTRUCTION PHASE 1
TEMPORARY TRAFFIC CONTROL PLAN ROUTE 1
SOUTHBOUND CLOSE RIGHT LANE AT BRIDGE NO. 841
SCALE: 1"=25'

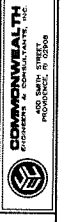
LEGEND

- APPROVED TEMPORARY TRAFFIC SIGN SUPPORT
- DRUM BARRIAGE STANDARD 26.2.0
- DIRECTION OF TRAFFIC FLOW
- ADVANCE WARNING ARROW PANEL
- WORK SPACE IN THIS PHASE
- SEGMENTATION CONTROL - CATCH BASIN

NOTE:
TEMPORARY ANCHORED BARRIER IS REQUIRED AT LOCATIONS OF BRIDGE JOINTS AND AT THE ENDS OF THE WORK SPACE TO FEET ON EITHER SIDE OF THE CENTERLINE OF EACH BRIDGE JOINT.

REVISIONS	NO.	DATE	BY
	1	1/27/18	US

RHODE ISLAND
DEPARTMENT OF TRANSPORTATION
STATEWIDE BRIDGE REPAIRS
CONTRACT 4 - AMTRAK BRIDGES
GORTON RAILROAD BRIDGE NO. 841
WARWICK, RHODE ISLAND



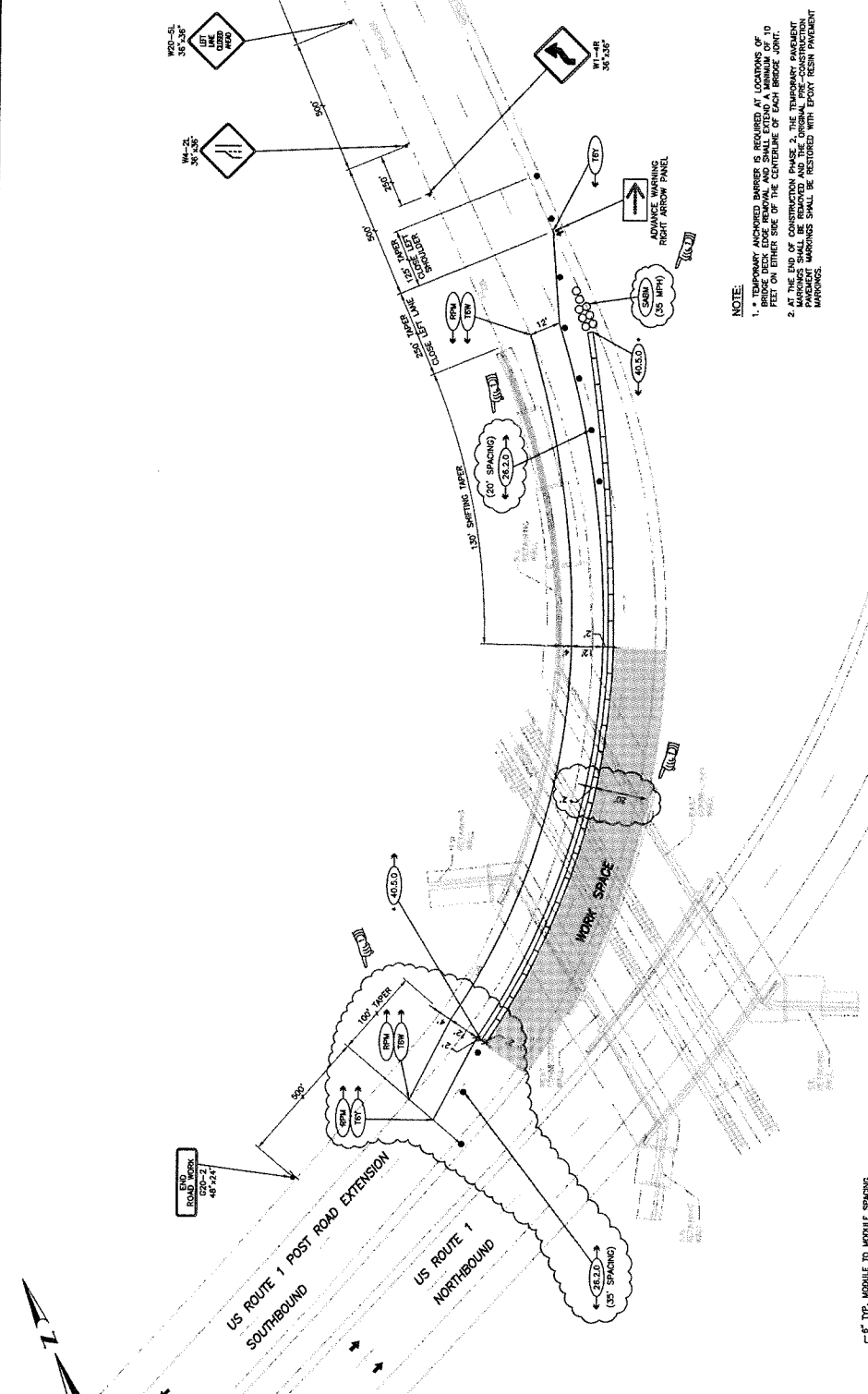
ADDENDUM No. 1

MAINTENANCE AND PROTECTION
OF TRAFFIC PLAN No. 8

CHECKED BY: _____ DATE: _____ SCALE: AS SHOWN
01138_V1_LRG_CONTROL_Plan_0001

NO.	DATE	BY	REVISIONS
1	1/22/20	IS	

DATE	SCALE	PROJECT NO.	PROJECT NAME
2/19/19	R-1	2019	STATEWIDE BRIDGE REPAIRS



NOTE:
 1. * TEMPORARY ANCHORED BARRIER IS REQUIRED AT LOCATIONS OF BRIDGE DECK EDGE REMOVAL AND SHALL EXTEND A MINIMUM OF 10 FEET ON EITHER SIDE OF THE CENTERLINE OF EACH BRIDGE JOINT.
 2. AT THE END OF CONSTRUCTION PHASE 2, THE TEMPORARY PAVEMENT MARKINGS SHALL BE RESTORED WITH EXISTING PAVEMENT MARKINGS.

- LEGEND**
- APPROVED TEMPORARY TRAFFIC SIGN SUPPORT
 - DRUM BARRICADE STANDARD 26.2.0
 - DIRECTION OF TRAFFIC FLOW
 - ADVANCE WARNING ARROW PANEL
 - WORK SPACE IN THIS PHASE

CONSTRUCTION PHASE 2
TEMPORARY TRAFFIC CONTROL PLAN ROUTE 1
SOUTHBOUND CLOSE LEFT LANE AT BRIDGE NO. 841
 SCALE: 1"=25'

TYPICAL DETAIL
SHOCK ABSORBING BARRIER MODULES
35 MPH DESIGN VELOCITY
FOR SECONDARY ROADS
 NOT TO SCALE



ADDITIONAL INFORMATION:
 APPROVED TEMPORARY TRAFFIC SIGN SUPPORT
 DRUM BARRICADE STANDARD 26.2.0
 DIRECTION OF TRAFFIC FLOW
 ADVANCE WARNING ARROW PANEL
 WORK SPACE IN THIS PHASE

CONSTRUCTION PHASE 2
TEMPORARY TRAFFIC CONTROL PLAN ROUTE 1
SOUTHBOUND CLOSE LEFT LANE AT BRIDGE NO. 841
 SCALE: 1"=25'

TYPICAL DETAIL
SHOCK ABSORBING BARRIER MODULES
35 MPH DESIGN VELOCITY
FOR SECONDARY ROADS
 NOT TO SCALE

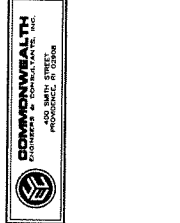
ADDITIONAL INFORMATION:
 APPROVED TEMPORARY TRAFFIC SIGN SUPPORT
 DRUM BARRICADE STANDARD 26.2.0
 DIRECTION OF TRAFFIC FLOW
 ADVANCE WARNING ARROW PANEL
 WORK SPACE IN THIS PHASE

CONSTRUCTION PHASE 2
TEMPORARY TRAFFIC CONTROL PLAN ROUTE 1
SOUTHBOUND CLOSE LEFT LANE AT BRIDGE NO. 841
 SCALE: 1"=25'

TYPICAL DETAIL
SHOCK ABSORBING BARRIER MODULES
35 MPH DESIGN VELOCITY
FOR SECONDARY ROADS
 NOT TO SCALE

NO.	DATE	BY	REVISIONS
1	1/22/20	IS	

RHODE ISLAND
DEPARTMENT OF TRANSPORTATION
STATEWIDE BRIDGE REPAIRS
CONTRACT 4 - AMTRAK BRIDGES
GORTON RAILROAD BRIDGE NO. 841
WARWICK, RHODE ISLAND
MAINTENANCE AND PROTECTION
OF TRAFFIC PLAN No. 9



ADDITIONAL INFORMATION:
 APPROVED TEMPORARY TRAFFIC SIGN SUPPORT
 DRUM BARRICADE STANDARD 26.2.0
 DIRECTION OF TRAFFIC FLOW
 ADVANCE WARNING ARROW PANEL
 WORK SPACE IN THIS PHASE

CONSTRUCTION PHASE 2
TEMPORARY TRAFFIC CONTROL PLAN ROUTE 1
SOUTHBOUND CLOSE LEFT LANE AT BRIDGE NO. 841
 SCALE: 1"=25'

TYPICAL DETAIL
SHOCK ABSORBING BARRIER MODULES
35 MPH DESIGN VELOCITY
FOR SECONDARY ROADS
 NOT TO SCALE

ADDITIONAL INFORMATION:
 APPROVED TEMPORARY TRAFFIC SIGN SUPPORT
 DRUM BARRICADE STANDARD 26.2.0
 DIRECTION OF TRAFFIC FLOW
 ADVANCE WARNING ARROW PANEL
 WORK SPACE IN THIS PHASE

CONSTRUCTION PHASE 2
TEMPORARY TRAFFIC CONTROL PLAN ROUTE 1
SOUTHBOUND CLOSE LEFT LANE AT BRIDGE NO. 841
 SCALE: 1"=25'

TYPICAL DETAIL
SHOCK ABSORBING BARRIER MODULES
35 MPH DESIGN VELOCITY
FOR SECONDARY ROADS
 NOT TO SCALE

ADDITIONAL INFORMATION:
 APPROVED TEMPORARY TRAFFIC SIGN SUPPORT
 DRUM BARRICADE STANDARD 26.2.0
 DIRECTION OF TRAFFIC FLOW
 ADVANCE WARNING ARROW PANEL
 WORK SPACE IN THIS PHASE