

October 1, 2018

STATE OF RHODE ISLAND AND PROVIDENCE PLANTATIONS
DEPARTMENT OF TRANSPORTATION
DIVISION OF PURCHASES BID NO. 7596688
RHODE ISLAND CONTRACT NO. 2018-CT-087
FEDERAL AID PROJECT NO.: STPG-HSIP(057)

AQUIDNECK AVENUE HSIP

TOWN OF MIDDLETOWN

COUNTY OF NEWPORT

NOTICE TO PROSPECTIVE BIDDERS

ADDENDUM NO.1:

Prospective Bidders and all concerned are hereby notified of the following changes in the Plans, Specifications, Proposal and Distribution of Quantities for this contract. These changes shall be incorporated in the Plans, Specifications, Proposal and Distribution of Quantities, and shall become an integral part of the Contract Documents.

A. Distribution of Quantities

- a. Delete page no.02 in its entirety and replace with revised page no.02 attached to this Addendum No. 1.
- b. Delete page nos.12-13 in its entirety and replace with revised page nos. 12-13 attached to this Addendum No. 1.
- c. Delete page nos. 19-21 in its entirety and replace with revised page nos.19, 19a, 20, 20a, 21 attached to this Addendum No. 1.
- d. Delete page nos. 22-27 in its entirety and replace with revised page nos. 22-27 attached to this Addendum No. 1.
- e. Add in its entirety no.28 attached to this Addendum No. 1.

B. Plans

- a. Delete sheet nos. 16-19 in their entirety and replace with revised sheet nos. 16-19 attached to this Addendum No. 1

C. Specifications -Contract Specific

- a. Delete page nos. Appendix B pages 1-5 in its entirety and replace with revised page nos. Appendix B pages 1-5 attached to this Addendum No. 1.



RI Department of Transportation
Administrator, Project Management

Table of Contents - Distribution of Quantities

Project Name - Aquidneck Avenue HSIP
 Estimate Name - Addendum to Advertising Estimate
 R.I. Contract No. - 2018-CT-087
 FAP Nos: STPG-HSIP(057)

ItemCode	Description	Page
201.0402	REMOVE AND DISPOSE CONCRETE CURB	1
201.0408	REMOVE AND DISPOSE RIGID PAVEMENT	1
201.0409	REMOVE AND DISPOSE FLEXIBLE PAVEMENT	1
201.0410	REMOVE AND DISPOSE CATCH BASINS	2
201.0423	REMOVE AND DISPOSE HANDHOLE	2
201.0610	REMOVE AND DISPOSE DIRECTIONAL, WARNING, REGULATORY, SERVICE, AND STREET SIGNS	2
201.0626	REMOVE AND SALVAGE TRAFFIC SIGNAL EQUIPMENT	2
202.0100	EARTH EXCAVATION	3
202.0700	COMMON BORROW	3
204.0100	TRIMMING AND FINE GRADING	3
206.9901	CATCH BASIN INLET PROTECTION	4
212.2000	CLEANING AND MAINTENANCE OF EROSION CONTROLS	4
302.0100	GRAVEL BORROW SUBBASE COURSE	4
401.1000	CLASS 19.0 HMA	4
401.2000	CLASS 12.5 HMA	5
401.2100	MODIFIED CLASS 12.5 HMA	5
403.0300	ASPHALT EMULSION TACK COAT	6
701.0412	REINFORCED CONCRETE PIPE M 170 CLASS III 12 INCH	6
702.0522	FRAME AND COVER STANDARD 6.2.1	6
702.0718	HIGH CAPACITY INLET STANDARD 3.3.6	6
702.9901	24" X 24" PRECAST CATCH BASIN WITH CAST IN PLACE FRAME AND GRATE - SQCB	6
707.0900	ADJUST MANHOLES TO GRADE	7
707.0950	ADJUST TELEPHONE MANHOLE TO GRADE	7
707.1900	ADJUST FRAME & COVER TO GRADE	7
708.9040	CLEANING AND FLUSHING PIPE ALL SIZES	7
708.9041	CLEANING CATCH BASINS ALL TYPES AND SIZES	8
713.8269	ADJUST WATER GATE BOXES TO GRADE	8
713.8300	ADJUST GAS GATE BOXES TO GRADE	8
903.0410	TEMPORARY CHAIN LINK FENCE	8
905.0110	PORTLAND CEMENT SIDEWALK MONOLITHIC STANDARD 43.1.0	9
905.0115	PORTLAND CEMENT CONCRETE DRIVEWAY STANDARD 43.5.0	9
906.0110	GRANITE CURB, QUARRY SPLIT STRAIGHT, STANDARD 7.3.0	9
906.0111	GRANITE CURB, QUARRY SPLIT CIRCULAR, STANDARD 7.3.0	10
906.0116	GRANITE CURB, QUARRY SPLIT 2 FOOT CORNERS, STANDARD 7.3.4	10
906.0118	6' GRANITE TRANSITION CURB, QUARRY SPLIT SPECIAL TRANSITION STANDARD 7.3.2	10
906.0119	3' GRANITE TRANSITION CURB STANDARD 7.3.1	10
906.0131	GRANITE RAMP STONE CIRCULAR STANDARD 7.3.9	11
906.0210	CEMENT CONCRETE CURB PRECAST STRAIGHT STANDARD 7.1.0	11
906.0221	6' PRECAST CONCRETE TRANSITION CURB STANDARD 7.1.2	11
906.0250	PRECAST CONCRETE WHEELCHAIR RAMP CURB STANDARDS 7.1.3, 43.3.0 AND 43.3.1	11
906.0260	PRECAST CONCRETE RAMP STONE 12-INCH STRAIGHT STANDARD 7.1.9	12
907.0100	WATER FOR DUST CONTROL	12
914.5010	FLAGPERSONS	12
919.0101	TEST PITS	13
922.0100	TEMPORARY CONSTRUCTION SIGNS STANDARD 29.1.0 AND 27.1.1	13
923.0105	DRUM BARRICADE STANDARD 26.2.0	14
923.0125	PLASTIC PIPE TYPE III BARRICADE STANDARD 26.3.1	14
923.0200	FLUORESCENT TRAFFIC CONES STANDARD 26.1.0	15
925.0112	PORTABLE CHANGEABLE MESSAGE SIGN	15

Table of Contents - Distribution of Quantities

Project Name - Aquidneck Avenue HSIP
 Estimate Name - Addendum to Advertising Estimate
 R.I. Contract No. - 2018-CT-087
 FAP Nos: STPG-HSIP(057)

ItemCode	Description	Page
929.0110	FIELD OFFICE	15
931.0110	CLEANING AND SWEEPING PAVEMENT	16
932.0200	FULL-DEPTH SAWCUT OF BITUMINOUS PAVEMENT	16
935.0400	REMOVING BITUMINOUS PAVEMENT BY MICRO MILLING	16
936.0110	MOBILIZATION	17
937.0200	MAINTENANCE AND MOVEMENT TRAFFIC PROTECTION	17
942.0200	DETECTABLE WARNING PANEL STANDARD 48.1.0	17
L01.0102	LOAM BORROW 4 INCHES DEEP	17
L01.0104	PLANTABLE SOIL 4 INCHES DEEP	18
T04.5302	14 AWG 2 CONDUCTOR TWISTED SHIELDED CABLE	18
T04.5303	14 AWG 3 CONDUCTOR CABLE	19
T04.5305	14 AWG 5 CONDUCTOR CABLE	19
T04.5307	14 AWG 7 CONDUCTOR CABLE	20
T05.0100	PRECAST TYPE A HANDHOLE STANDARD 18.2.0	21
T05.0400	BREAK INTO EXISTING HANDHOLE	21
T06.5130	3 INCH SCHEDULE 40 POLYVINYL CHLORIDE PLASTIC CONDUIT - UNDERGROUND	21
T06.5430	3 INCH SCHEDULE 80 POLYVINYL CHLORIDE PLASTIC CONDUIT - UNDER EXISTING PAVEMENT	21
T11.2008	TRAFFIC SIGNAL STANDARD,8 FOOT,STD 19.4.0 ALUMINUM PEDESTAL POLE AND FOUNDATION	22
T11.2010	TRAFFIC SIGNAL STANDARD,10 FT, STD 19.4.0 ALUMINUM PEDESTAL POLE AND FOUNDATION	22
T13.1000	TRAFFIC DETECTORS-LOOP, STANDARD 19.6.0	22
T13.8210	ACCESSIBLE PEDESTRIAN DETECTOR - PUSHBUTTON WITH SIGN	22
T14.3513	1 WAY 3 SECTION MAST ARM MOUNTED SIGNAL HEAD 12 INCH	23
T14.3516	1 WAY 4 SECTION MAST ARM MOUNTED SIGNAL HEAD 12 INCH (W/ DUAL IND DUAL ROW L.E.D. ARROW)	23
T14.9902	1 WAY 2 SECTION PEDESTAL MOUNTED LED PEDESTRIAN SIGNAL HEAD 12 INCH W/ COUNTDOWN TIMER	23
T14.9903	1 WAY 2 SECTION BRACKETT MOUNTED LED PEDESTRIAN SIGNAL HEAD 12 INCH W/ COUNTDOWN TIMER	23
T15.0100	DIRECTIONAL REGULATORY AND WARNING SIGNS	23
T15.0200	REMOVE AND RELOCATE DIRECTIONAL REGULATORY AND WARNING SIGN	24
T15.1100	STREET SIGN - OVERHEAD MOUNTED	24
T20.0006	6 INCH WHITE FAST - DRYING WATERBORNE PAVEMENT MARKING PAINT	25
T20.0008	** ITEM DELETED **	25
T20.0012	12 INCH WHITE FAST - DRYING WATERBORNE PAVEMENT MARKING PAINT	25
T20.0104	4 INCH YELLOW FAST - DRYING WATERBORNE PAVEMENT MARKING PAINT	26
T20.0106	6 INCH YELLOW FAST - DRYING WATERBORNE PAVEMENT MARKING PAINT	26
T20.0820	FAST DRYING WATERBORNE PAVEMENT ARROW - STRAIGHT, LEFT, RIGHT, OR COMBINED STANDARD 20.1.0	26
T20.0822	FAST DRYING WATERBORNE PAVEMENT MARKING WORD "ONLY" STANDARD 20.1.0	27
T20.0830	FAST-DRYING WATERBORNE PAINT PAVEMENT MARKING - HELMETED BICYCLIST SYMBOL WITH ARROW	27
914.5020	FLAGPERSONS - OVERTIME	27
T14.3713	1 WAY 3 SECTION PEDESTAL MOUNTED SIGNAL HEAD 12 INCH	27

Distribution of Quantities

Project Name - Aquidneck Avenue HSIP
 Estimate Name - Addendum to Advertising Estimate
 R.I. Contract No. - 2018-CT-087
 FAP Nos: STPG-HSIP(057)

Item No.	Item Code	Description	UM	Qty.	Pay Code	Seq. No.
001	201.0402	REMOVE AND DISPOSE CONCRETE CURB	LF			
		CRESCENT				
		10+39 TO 30+68 RT		59.00	0021	01
		10+92 TO 11+13 RT		54.00	0021	01
		ROUNDING		7.00	0021	01
		PURGATORY				
		11+75 RT		134.00	0021	01
		12+31 TO 31+00 LT		64.00	0021	01
		ROUNDING		5.00	0021	01
		SIDEWALK		127.00	0021	01
Item 201.0402 Total:				450.00		
002	201.0408	REMOVE AND DISPOSE RIGID PAVEMENT	SY			
		CRESCENT				
		10+92 to 11+13 RT		13.00	0021	01
		ROUNDING		2.00	0021	01
		PURGATORY				
		11+67 TO 12+09 RT		67.00	0021	01
		12+31 TO 13+00 LT		41.00	0021	01
		ROUNDING		6.00	0021	01
		SIDEWALK		61.00	0021	01
Item 201.0408 Total:				190.00		
003	201.0409	REMOVE AND DISPOSE FLEXIBLE PAVEMENT	SY			
		CRESCENT				
		10+39 TO 30+68 RT		29.20	0021	01
		10+75 TO 11+17 RT		130.60	0021	01
		ROUNDING		5.20	0021	01
		PURGATORY				
		10+97 TO 12+32 RT		686.00	0021	01
		12+31 TO 13+00 LT		17.00	0021	01
		ROUNDING		7.00	0021	01

Distribution of Quantities

Project Name - Aquidneck Avenue HSIP
 Estimate Name - Addendum to Advertising Estimate
 R.I. Contract No. - 2018-CT-087
 FAP Nos: STPG-HSIP(057)

Item No.	Item Code	Description	UM	Qty.	Pay Code	Seq. No.
003	201.0409	Cont.				
				Item 201.0409 Total:		875.00
004	201.0410	REMOVE AND DISPOSE CATCH BASINS	EACH			
		PURGATORY				
		40+50 RT		1.00	0021	01
				Item 201.0410 Total:		1.00
005	201.0423	REMOVE AND DISPOSE HANDHOLE	EACH			
		PURGATORY				
		11+91		1.00	0021	01
				Item 201.0423 Total:		1.00
006	201.0610	REMOVE AND DISPOSE DIRECTIONAL, WARNING, REGULATORY, SERVICE, AND STREET SIGNS	EACH			
		CRESCENT				
		11+11 RT		2.00	0021	01
		STOP SIGN		1.00	0021	01
		PURGATORY				
		10+40 RT		1.00	0021	01
		11+69 RT		1.00	0021	01
		11+94 RT		1.00	0021	01
		11+98		1.00	0021	01
		11+98 RT		1.00	0021	01
		12+06 RT		1.00	0021	01
		40+32		1.00	0021	01
				Item 201.0610 Total:		10.00
007	201.0626	REMOVE AND SALVAGE TRAFFIC SIGNAL EQUIPMENT	EACH			
		PURGATORY				
		PURGATORY		7.00	0021	01
				Item 201.0626 Total:		7.00

Distribution of Quantities

Project Name - Aquidneck Avenue HSIP
 Estimate Name - Addendum to Advertising Estimate
 R.I. Contract No. - 2018-CT-087
 FAP Nos: STPG-HSIP(057)

Item No.	Item Code	Description	UM	Qty.	Pay Code	Seq. No.
008	202.0100	EARTH EXCAVATION	CY			
		CRESCENT				
		CURb		1.20	0021	01
		PLANTING AREAs		57.50	0021	01
		ROUNDING		0.70	0021	01
		SIDEWALK		10.60	0021	01
		PURGATORY				
		BOX WIDENING		106.10	0021	01
		CURb		1.10	0021	01
		PLANTING AREAs		79.90	0021	01
		ROUNDING		1.60	0021	01
		SIDEWALK		61.30	0021	01
Item 202.0100 Total:				320.00		
009	202.0700	COMMON BORROW	CY			
		CRESCENT				
		PLANTING AREAs		23.70	0021	01
		ROUNDING		11.30	0021	01
		PURGATORY				
		PLANTING AREAs		32.00	0021	01
		ROUNDING		18.00	0021	01
Item 202.0700 Total:				85.00		
010	204.0100	TRIMMING AND FINE GRADING	SY			
		CRESCENT				
		LANDSCAPE AREAs		101.00	0021	01
		ROUNDING		7.00	0021	01
		SIDEWALK		32.00	0021	01
		PURGATORY				
		BOX WIDENING		412.00	0021	01
		DRIVEWAYS		30.00	0021	01
		LANDSCAPE AREAs		48.00	0021	01
		ROUNDING		6.00	0021	01

Distribution of Quantities

Project Name - Aquidneck Avenue HSIP
 Estimate Name - Addendum to Advertising Estimate
 R.I. Contract No. - 2018-CT-087
 FAP Nos: STPG-HSIP(057)

Item No.	Item Code	Description	UM	Qty.	Pay Code	Seq. No.
010	204.0100	Cont. SIDEWALK		184.00	0021	01
Item 204.0100 Total:				820.00		
011	206.9901	CATCH BASIN INLET PROTECTION	EACH			
		CRESCENT				
		INTERSECTION		4.00	0021	01
		PURGATORY				
		INTERSECTION		6.00	0021	01
Item 206.9901 Total:				10.00		
012	212.2000	CLEANING AND MAINTENANCE OF	LS			
		EROSION CONTROLS				
		Aquidneck Ave				
		C & P		1.00	0021	01
Item 212.2000 Total:				1.00		
013	302.0100	GRAVEL BORROW SUBBASE COURSE	CY			
		CRESCENT				
		CURb		0.80	0021	01
		ROUNDING		2.10	0021	01
		SIDEWALK		7.10	0021	01
		PURGATORY				
		BOX WIDENING		63.70	0021	01
		CURb		0.70	0021	01
		DRIVEWAY		6.60	0021	01
		REGRADe		11.40	0021	01
		ROUNDING		1.70	0021	01
		SIDEWALK		40.90	0021	01
Item 302.0100 Total:				135.00		
014	401.1000	CLASS 19.0 HMA	TON			
		CRESCENT				
		10+39 TO 30+68 Rt		2.00	0021	01

Distribution of Quantities

Project Name - Aquidneck Avenue HSIP
 Estimate Name - Addendum to Advertising Estimate
 R.I. Contract No. - 2018-CT-087
 FAP Nos: STPG-HSIP(057)

Item No.	Item Code	Description	UM	Qty.	Pay Code	Seq. No.
014	401.1000	Cont.				
		10+73 TO 11+18 Rt		3.40	0021	01
		ROUNDING		0.60	0021	01
		PURGATORY				
		12+32 TO 13+01 Lt		3.90	0021	01
		40+32 TO 40+75 Rt		2.90	0021	01
		BOX WIDENING		43.30	0021	01
		REGRADE AREa		46.40	0021	01
		ROUNDING		3.50	0021	01
Item 401.1000 Total:				106.00		
015	401.2000	CLASS 12.5 HMA	TON			
		CRESCENT				
		CALC b		86.60	0021	01
		ROUNDING		3.40	0021	01
		PURGATORY				
		CALC b		164.20	0021	01
		CALC d		21.70	0021	01
		REGRADE AREa		23.20	0021	01
		ROUNDING		0.90	0021	01
Item 401.2000 Total:				300.00		
016	401.2100	MODIFIED CLASS 12.5 HMA	TON			
		CRESCENT				
		10+39 TO 30+68 Rt		1.00	0021	01
		10+73 TO 11+18 Rt		1.70	0021	01
		ROUNDING		0.30	0021	01
		PURGATORY				
		10+32 TO 40+75 Rt		1.50	0021	01
		12+32 TO 13+01 Lt		1.90	0021	01
		CALC d		21.70	0021	01
		REGRADE AREa		23.20	0021	01
		ROUNDING		1.70	0021	01
Item 401.2100 Total:				53.00		

Distribution of Quantities

Project Name - Aquidneck Avenue HSIP
 Estimate Name - Addendum to Advertising Estimate
 R.I. Contract No. - 2018-CT-087
 FAP Nos: STPG-HSIP(057)

Item No.	Item Code	Description	UM	Qty.	Pay Code	Seq. No.
017	403.0300	ASPHALT EMULSION TACK COAT	SY			
		CRESCENT				
		AREA OF 19.0 HMa		23.70	0021	01
		CALC b		763.90	0021	01
		ROUNDING		2.40	0021	01
		PURGATORY				
		AREA FROM 401.0100		426.00	0021	01
		CALC b		1,448.00	0021	01
		ROUNDING		26.00	0021	01
Item 403.0300 Total:				2,690.00		
018	701.0412	REINFORCED CONCRETE PIPE M 170	LF			
		CLASS III 12 INCH				
		PURGATORY				
		40+24 TO 40+46 Rt		28.00	0021	01
		40+46 TO 40+58 Rt		20.00	0021	01
		ROUNDING		2.00	0021	01
Item 701.0412 Total:				50.00		
019	702.0522	FRAME AND COVER STANDARD 6.2.1	EACH			
		PURGATORY				
		12+17 Rt		1.00	0021	01
Item 702.0522 Total:				1.00		
020	702.0718	HIGH CAPACITY INLET STANDARD 3.3.6	EACH			
		PURGATORY				
		12+17 Rt		1.00	0021	01
Item 702.0718 Total:				1.00		
021	702.9901	24" X 24" PRECAST CATCH BASIN WITH	EACH			
		CAST IN PLACE FRAME AND GRATE -				
		SQCB				
		PURGATORY				

Distribution of Quantities

Project Name - Aquidneck Avenue HSIP
 Estimate Name - Addendum to Advertising Estimate
 R.I. Contract No. - 2018-CT-087
 FAP Nos: STPG-HSIP(057)

Item No.	Item Code	Description	UM	Qty.	Pay Code	Seq. No.
021	702.9901 Cont.	12+02 RT		1.00	0021	01
Item 702.9901 Total:				1.00		
022	707.0900	ADJUST MANHOLES TO GRADE PURGATORY	EACH			
		12+36 Lt		1.00	0021	01
Item 707.0900 Total:				1.00		
023	707.0950	ADJUST TELEPHONE MANHOLE TO GRADE PURGATORY	EACH			
		40+87 Rt		1.00	0021	01
Item 707.0950 Total:				1.00		
024	707.1900	ADJUST FRAME & COVER TO GRADE CRESCENT	EACH			
		11+30 Rt		1.00	0021	01
		11+41 Rt		1.00	0021	01
		PURGATORY				
		12+15		1.00	0021	01
		40+56 Rt		1.00	0021	01
Item 707.1900 Total:				4.00		
025	708.9040	CLEANING AND FLUSHING PIPE ALL SIZES PURGATORY	LF			
		10+89 TO 12+02 Lt		108.00	0021	01
		12+02 TO 12+03 Lt		51.00	0021	01
		12+02 TO 13+58 Lt		142.00	0021	01
		12+03 TO 12+61 Lt		142.00	0021	01
		12+54 TO 12+59 Rt		27.00	0021	01
		12+54 TO 12+62 Rt		29.00	0021	01
		12+62 TO 13+58 Rt		111.00	0021	01
Item 708.9040 Total:				610.00		

Distribution of Quantities

Project Name - Aquidneck Avenue HSIP
 Estimate Name - Addendum to Advertising Estimate
 R.I. Contract No. - 2018-CT-087
 FAP Nos: STPG-HSIP(057)

Item No.	Item Code	Description	UM	Qty.	Pay Code	Seq. No.
026	708.9041	CLEANING CATCH BASINS ALL TYPES	EACH			
		AND SIZES				
		CRESCENT				
		11+47 Rt		1.00	0021	01
		PURGATORY				
		10+95 Lt		1.00	0021	01
		12+16 LT		1.00	0021	01
		12+16 RT		1.00	0021	01
		12+76 RT		1.00	0021	01
		40+89 LT		1.00	0021	01
		Item 708.9041 Total:		6.00		
027	713.8269	ADJUST WATER GATE BOXES TO GRADE	EACH			
		CRESCENT				
		11+36 RT		1.00	0021	01
		11+41 RT		1.00	0021	01
		PURGATORY				
		11+69 LT		1.00	0021	01
		12+03 RT		1.00	0021	01
		12+13 RT		1.00	0021	01
		Item 713.8269 Total:		5.00		
028	713.8300	ADJUST GAS GATE BOXES TO GRADE	EACH			
		CRESCENT				
		10+34 LT		1.00	0021	01
		PURGATORY				
		11+34 RT		1.00	0021	01
		40+57 RT		1.00	0021	01
		Item 713.8300 Total:		3.00		
029	903.0410	TEMPORARY CHAIN LINK FENCE	LF			
		PURGATORY				
		ROUNDING		8.00	0021	01

Distribution of Quantities

Project Name - Aquidneck Avenue HSIP
 Estimate Name - Addendum to Advertising Estimate
 R.I. Contract No. - 2018-CT-087
 FAP Nos: STPG-HSIP(057)

Item No.	Item Code	Description	UM	Qty.	Pay Code	Seq. No.
029	903.0410	Cont.				
		STAGE 2		158.00	0021	01
		STAGE 4		364.00	0021	01
Item 903.0410 Total:				530.00		
030	905.0110	PORTLAND CEMENT SIDEWALK	CY			
		MONOLITHIC STANDARD 43.1.0				
		CRESCENT				
		CALC h		7.20	0021	01
		ROUNDING		0.80	0021	01
		PURGATORY				
		CALV e		20.40	0021	01
		ROUNDING		4.60	0021	01
Item 905.0110 Total:				33.00		
031	905.0115	PORTLAND CEMENT CONCRETE DRIVEWAY	CY			
		STANDARD 43.5.0				
		PURGATORY				
		10+95 TO 11+38		15.80	0021	01
		ROUNDING		4.20	0021	01
Item 905.0115 Total:				20.00		
032	906.0110	GRANITE CURB, QUARRY SPLIT	LF			
		STRAIGHT, STANDARD 7.3.0				
		CRESCENT				
		10+41 TO 10+49 Rt		8.80	0021	01
		10+93 TO 11+02 Rt		9.20	0021	01
		10+94 TO 11+08 Rt		15.60	0021	01
		30+27 TO 30+33 Rt		6.50	0021	01
		ROUNDING		4.90	0021	01
		PURGATORY				
		11+37 TO 11+58 Rt		25.00	0021	01
		11+52 TO 11+89 Rt		40.00	0021	01
		ROUNDING		5.00	0021	01

Distribution of Quantities

Project Name - Aquidneck Avenue HSIP
 Estimate Name - Addendum to Advertising Estimate
 R.I. Contract No. - 2018-CT-087
 FAP Nos: STPG-HSIP(057)

Item No.	Item Code	Description	UM	Qty.	Pay Code	Seq. No.
032	906.0110	Cont.		115.00		
Item 906.0110 Total:						
033	906.0111	GRANITE CURB, QUARRY SPLIT CIRCULAR, STANDARD 7.3.0 CRESCENT	LF			
		10+77 TO 10+94 Rt		35.30	0021	01
		11+08 TO 11+06 Rt		19.70	0021	01
		ROUNDING		5.00	0021	01
		PURGATORY				
		11+89 TO 11+95 Rt		7.00	0021	01
		40+30 TO 40+75 Rt		59.00	0021	01
		ROUNDING		4.00	0021	01
Item 906.0111 Total:				130.00		
034	906.0116	GRANITE CURB, QUARRY SPLIT 2 FOOT CORNERS, STANDARD 7.3.4 CRESCENT	EACH			
		10+40 Rt		1.00	0021	01
Item 906.0116 Total:				1.00		
035	906.0118	6' GRANITE TRANSITION CURB, QUARRY SPLIT SPECIAL TRANSITION STANDARD 7.3.2 CRESCENT	EACH			
		10+52 Rt		1.00	0021	01
		10+89 Rt		1.00	0021	01
		11+05 Rt		1.00	0021	01
		PURGATORY				
		11+48 Rt		1.00	0021	01
		12+00 Rt		2.00	0021	01
Item 906.0118 Total:				6.00		
036	906.0119	3' GRANITE TRANSITION CURB	EACH			

Distribution of Quantities

Project Name - Aquidneck Avenue HSIP
 Estimate Name - Addendum to Advertising Estimate
 R.I. Contract No. - 2018-CT-087
 FAP Nos: STPG-HSIP(057)

Item No.	Item Code	Description	UM	Qty.	Pay Code	Seq. No.
036	906.0119	Cont. STANDARD 7.3.1				
		CRESCENT				
		20+22 Rt		1.00	0021	01
		30+25 Lt		1.00	0021	01
		30+25 Rt		1.00	0021	01
Item 906.0119 Total:				3.00		
037	906.0131	GRANITE RAMP STONE CIRCULAR	EACH			
		STANDARD 7.3.9				
		CRESCENT				
		10+55 Rt		1.00	0021	01
		10+80 Rt		1.00	0021	01
		11+06 Rt		1.00	0021	01
		PURGATORY				
		12+02 Rt		1.00	0021	01
Item 906.0131 Total:				4.00		
038	906.0210	CEMENT CONCRETE CURB PRECAST	LF			
		STRAIGHT STANDARD 7.1.0				
		PURGATORY				
		12+32 TO 12+70 Lt		35.10	0021	01
		12+87 TO 13+01 Lt		12.80	0021	01
		ROUNDING		2.10	0021	01
Item 906.0210 Total:				50.00		
039	906.0221	6' PRECAST CONCRETE TRANSITION	EACH			
		CURB STANDARD 7.1.2				
		PURGATORY				
		12+73 Lt		1.00	0021	01
		12+84 Lt		1.00	0021	01
Item 906.0221 Total:				2.00		
040	906.0250	PRECAST CONCRETE WHEELCHAIR RAMP	EACH			

Distribution of Quantities

Project Name - Aquidneck Avenue HSIP
 Estimate Name - Addendum to Advertising Estimate
 R.I. Contract No. - 2018-CT-087
 FAP Nos: STPG-HSIP(057)

Item No.	Item Code	Description	UM	Qty.	Pay Code	Seq. No.
040	906.0250	Cont. CURB STANDARDS 7.1.3, 43.3.0 AND 43.3.1				
		CRESCENT				
		10+55 Rt		1.00	0021	01
		10+87 Rt		1.00	0021	01
		11+07 Rt		1.00	0021	01
		20+40 Lt		1.00	0021	01
		PURGATORY				
		11+50 Rt		1.00	0021	01
		12+78 Lt		1.00	0021	01
Item 906.0250 Total:				6.00		
041	906.0260	PRECAST CONCRETE RAMP STONE 12-INCH STRAIGHT STANDARD 7.1.9	EACH			
		CRESCENT				
		20+10 Lt		1.00	0021	01
		PURGATORY				
		12+78 Lt		1.00	0021	01
Item 906.0260 Total:				2.00		
042	907.0100	WATER FOR DUST CONTROL	MGAL			
		PURGATORY				
		ITEM 204.011		0.68	0021	01
		ROUNDING		0.32	0021	01
Item 907.0100 Total:				1.00		
043	914.5010	FLAGPERSONS	MHRS			
		CRESCENT				
		PHASE 1		135.00	0021	01
		PHASE 2		27.00	0021	01
		PHASE 3		36.00	0021	01
		PHASE 4		36.00	0021	01
		PURGATORY				

Distribution of Quantities

Project Name - Aquidneck Avenue HSIP
 Estimate Name - Addendum to Advertising Estimate
 R.I. Contract No. - 2018-CT-087
 FAP Nos: STPG-HSIP(057)

Item No.	Item Code	Description	UM	Qty.	Pay Code	Seq. No.
043	914.5010 Cont.	PHASE 1		27.00	0021	01
		PHASE 2		135.00	0021	01
		PHASE 3		27.00	0021	01
		PHASE 4		18.00	0021	01
		REDUCTION FOR Ot		-89.00	0021	01
		TEST PITS		8.00	0021	01
Item 914.5010 Total:				360.00		
044	919.0101	TEST PITS	EACH			
		PURGATORY				
		intersection		2.00	0021	01
Item 919.0101 Total:				2.00		
045	922.0100	TEMPORARY CONSTRUCTION SIGNS	SF			
		STANDARD 29.1.0 AND 27.1.1				
		CRESCENT				
		M4-8A		3.00	0021	01
		M4-9		30.00	0021	01
		M4-9R		6.00	0021	01
		R11-2		18.00	0021	01
		R11-4		12.50	0021	01
		ROUNDING		0.50	0021	01
		W20-1		36.00	0021	01
		W20-2		27.00	0021	01
		W20-4		36.00	0021	01
		W20-7		36.00	0021	01
		W3-4		9.00	0021	01
		PURGATORY				
		M4-8A		6.00	0021	01
		M4-9		5.00	0021	01
		M4-9 L		10.00	0021	01
		M4-9 R		5.00	0021	01
		R11-2		10.00	0021	01

Distribution of Quantities

Project Name - Aquidneck Avenue HSIP
Estimate Name - Addendum to Advertising Estimate
R.I. Contract No. - 2018-CT-087
FAP Nos: STPG-HSIP(057)

Item No.	Item Code	Description	UM	Qty.	Pay Code	Seq. No.
045	922.0100	Cont.	R11-4	12.50	0021	01

Distribution of Quantities

Project Name - Aquidneck Avenue HSIP
 Estimate Name - Addendum to Advertising Estimate
 R.I. Contract No. - 2018-CT-087
 FAP Nos: STPG-HSIP(057)

Item No.	Item Code	Description	UM	Qty.	Pay Code	Seq. No.
045	922.0100	Cont.				
		R9-11 L		3.00	0021	01
		R9-11 R		6.00	0021	01
		R9-9		4.00	0021	01
		ROUNDING		0.22	0021	01
		SP-2		14.28	0021	01
		W20-1		27.00	0021	01
		W20-2		27.00	0021	01
		W20-3		9.00	0021	01
		W20-4		27.00	0021	01
		W20-7		27.00	0021	01
Item 922.0100 Total:				407.00		
046	923.0105	DRUM BARRICADE STANDARD 26.2.0	B DAY			
		CRESCENT				
		PHASE 1		100.00	0021	01
		PHASE 2		20.00	0021	01
		PHASE 3		22.00	0021	01
		PHASE 4		21.00	0021	01
		ROUNDING		7.00	0021	01
		PURGATORY				
		ROUNDING		9.00	0021	01
		STAGE 1		18.00	0021	01
		STAGE 2		250.00	0021	01
		STAGE 3		18.00	0021	01
		STAGE 4		25.00	0021	01
Item 923.0105 Total:				490.00		
047	923.0125	PLASTIC PIPE TYPE III BARRICADE	EACH			
		STANDARD 26.3.1				
		CRESCENT				
		STAGE 1		9.00	0021	01
		PURGATORY				
		ROUNDING		1.00	0021	01

Distribution of Quantities

Project Name - Aquidneck Avenue HSIP
 Estimate Name - Addendum to Advertising Estimate
 R.I. Contract No. - 2018-CT-087
 FAP Nos: STPG-HSIP(057)

Item No.	Item Code	Description	UM	Qty.	Pay Code	Seq. No.
047	923.0125	Cont.		10.00	0021	01
				Item 923.0125 Total:		20.00
048	923.0200	FLUORESCENT TRAFFIC CONES STANDARD	EACH			
26.1.0						
CRESCENT						
		STAGE 1		15.00	0021	01
PURGATORY						
		STAGE 2		30.00	0021	01
				Item 923.0200 Total:		45.00
049	925.0112	PORTABLE CHANGEABLE MESSAGE SIGN	PDAY			
CRESCENT						
		7 DAY ADVANCED WARNING		14.00	0021	01
		FINAL CLEAN UP		2.00	0021	01
		STAGE 1		10.00	0021	01
		STAGE 2		2.00	0021	01
		STAGE 3		2.00	0021	01
		STAGE 4		2.00	0021	01
		STAGE 5		2.00	0021	01
PURGATORY						
		FINAL CLEAN UP		4.00	0021	01
		STAGE 1		2.00	0021	01
		STAGE 2		10.00	0021	01
		STAGE 3		2.00	0021	01
		STAGE 4		2.00	0021	01
				Item 925.0112 Total:		54.00
050	929.0110	FIELD OFFICE	PMO			
PURGATORY						
		convenient location agreed upon between contractor and RIDOT		6.00	0021	01

Distribution of Quantities

Project Name - Aquidneck Avenue HSIP
 Estimate Name - Addendum to Advertising Estimate
 R.I. Contract No. - 2018-CT-087
 FAP Nos: STPG-HSIP(057)

Item No.	Item Code	Description	UM	Qty.	Pay Code	Seq. No.
050	929.0110	Cont.				
Item 929.0110 Total:				6.00		

Distribution of Quantities

Project Name - Aquidneck Avenue HSIP
 Estimate Name - Addendum to Advertising Estimate
 R.I. Contract No. - 2018-CT-087
 FAP Nos: STPG-HSIP(057)

Item No.	Item Code	Description	UM	Qty.	Pay Code	Seq. No.
051	931.0110	CLEANING AND SWEEPING PAVEMENT	HSY			
		CRESCENT				
		CALC B		7.64	0021	01
		ROUNDING		0.36	0021	01
		PURGATORY				
		CALC B		14.48	0021	01
		ITEM 401.1000		4.26	0021	01
		ROUNDING		0.26	0021	01
Item 931.0110 Total:				27.00		
052	932.0200	FULL-DEPTH SAWCUT OF BITUMINOUS PAVEMENT	LF			
		CRESCENT				
		10+00		36.00	0021	01
		10+38		141.00	0021	01
		10+75		131.00	0021	01
		11+50		36.00	0021	01
		20+60		34.00	0021	01
		30+95		19.00	0021	01
		ROUNDING		3.00	0021	01
		PURGATORY				
		10+50		39.00	0021	01
		10+96		47.00	0021	01
		12+31		65.00	0021	01
		13+25		36.00	0021	01
		40+29		61.00	0021	01
		41+33		38.00	0021	01
		ROUNDING		14.00	0021	01
Item 932.0200 Total:				700.00		
053	935.0400	REMOVING BITUMINOUS PAVEMENT BY MICRO MILLING	SY			
		CRESCENT				

Distribution of Quantities

Project Name - Aquidneck Avenue HSIP
 Estimate Name - Addendum to Advertising Estimate
 R.I. Contract No. - 2018-CT-087
 FAP Nos: STPG-HSIP(057)

Item No.	Item Code	Description	UM	Qty.	Pay Code	Seq. No.
053	935.0400 Cont.	CALC B		784.00	0021	01
		ROUNDING		16.00	0021	01
		PURGATORY				
		CALC B		1,448.00	0021	01
		ROUNDING		52.00	0021	01
Item 935.0400 Total:				2,300.00		
054	936.0110	MOBILIZATION	LS			
		AQUIDNECK AVE				
		Purgatory & Crescent		1.00	0021	01
Item 936.0110 Total:				1.00		
055	937.0200	MAINTENANCE AND MOVEMENT TRAFFIC PROTECTION	LS			
		AQUIDNECK AVE				
		P&C		1.00	0021	01
Item 937.0200 Total:				1.00		
056	942.0200	DETECTABLE WARNING PANEL STANDARD	SF			
		48.1.0				
		CRESCENT				
		10+55		10.00	0021	01
		10+87		10.00	0021	01
		11+07		10.00	0021	01
		20+40		8.00	0021	01
		PURGATORY				
		12+02		12.00	0021	01
		12+80		8.00	0021	01
		12+81		8.00	0021	01
Item 942.0200 Total:				66.00		
057	L01.0102	LOAM BORROW 4 INCHES DEEP	SY			
		CRESCENT				

Distribution of Quantities

Project Name - Aquidneck Avenue HSIP
 Estimate Name - Addendum to Advertising Estimate
 R.I. Contract No. - 2018-CT-087
 FAP Nos: STPG-HSIP(057)

Item No.	Item Code	Description	UM	Qty.	Pay Code	Seq. No.
057	L01.0102 Cont.	LANDSCAPED AREAS		101.00	0021	01
		ROUNDING		9.00	0021	01
		PURGATORY				
		LANDSCAPED AREAS		144.00	0021	01
		ROUNDING		6.00	0021	01
Item L01.0102 Total:				260.00		
058	L01.0104	PLANTABLE SOIL 4 INCHES DEEP	SY			
		CRESCENT				
		LANDSCAPED AREAS		304.00	0021	01
		ROUNDING		6.00	0021	01
		PURGATORY				
		CONTINGENCY AND ROUNDING		28.00	0021	01
		LANDSCAPED AREAS		432.00	0021	01
Item L01.0104 Total:				770.00		
059	T04.5302	14 AWG 2 CONDUCTOR TWISTED	LF			
		SHIELDED CABLE				
		PURGATORY				
		CABINET		50.00	0021	01
		CABINET TO H1		15.00	0021	01
		H1		50.00	0021	01
		H1 TO H2		52.00	0021	01
		H1 TO H4		260.00	0021	01
		H2		10.00	0021	01
		H2 TO LOOP 2		17.00	0021	01
		H4		40.00	0021	01
		H4 TO H5		92.00	0021	01
		H4 TO LOOP 3		16.00	0021	01
		H4 TO LOOP 4		33.00	0021	01
		H5		20.00	0021	01
		H5 TO LOOP 1		25.00	0021	01
		H5 TO LOOP 5		12.00	0021	01

Distribution of Quantities

Project Name - Aquidneck Avenue HSIP
 Estimate Name - Addendum to Advertising Estimate
 R.I. Contract No. - 2018-CT-087
 FAP Nos: STPG-HSIP(057)

Item No.	Item Code	Description	UM	Qty.	Pay Code	Seq. No.
059	T04.5302 Cont.	ROUNDING		8.00	0021	01
Item T04.5302 Total:				700.00		
060	T04.5303	14 AWG 3 CONDUCTOR CABLE	LF			
		PURGATORY				
		CABINET		40.00	0021	01
		CABINET TO H1		12.00	0021	01
		H1		40.00	0021	01
		H1 TO H2		156.00	0021	01
		H1 TO H4		65.00	0021	01
		H2		30.00	0021	01
		H2 TO P1		23.00	0021	01
		H2 TO P3		90.00	0021	01
		H3		20.00	0021	01
		H3 TO P2		14.00	0021	01
		H4		10.00	0021	01
		H4 TO H5		47.00	0021	01
		H5		10.00	0021	01
		H5 TO P4		4.00	0021	01
		P1		10.00	0021	01
		P2		20.00	0021	01
		P4		10.00	0021	01
		ROUNDING		9.00	0021	01
Item T04.5303 Total:				610.00		
061	T04.5305	14 AWG 5 CONDUCTOR CABLE	LF			
		PURGATORY				
		CABINET		40.00	0021	01
		CABINET TO H1		12.00	0021	01
		H1		40.00	0021	01
		H1 TO H2		52.00	0021	01
		H1 TO MAST ARM		33.00	0021	01
		H2		10.00	0021	01

Distribution of Quantities

Project Name - Aquidneck Avenue HSIP
 Estimate Name - Addendum to Advertising Estimate
 R.I. Contract No. - 2018-CT-087
 FAP Nos: STPG-HSIP(057)

Item No.	Item Code	Description	UM	Qty.	Pay Code	Seq. No.
061	T04.5305 Cont.	H2 TO H3		45.00	0021	01
		H3		10.00	0021	01
		H3 TO SIGNAL c		7.00	0021	01
		MAST ARM		90.00	0021	01
		MAST ARM TO SIGNAL a		31.00	0021	01

Distribution of Quantities

Project Name - Aquidneck Avenue HSIP
 Estimate Name - Addendum to Advertising Estimate
 R.I. Contract No. - 2018-CT-087
 FAP Nos: STPG-HSIP(057)

Item No.	Item Code	Description	UM	Qty.	Pay Code	Seq. No.
061	T04.5305 Cont.	MAST ARM TO SIGNAL E		20.00	0021	01
		MAST ARM TO SIGNAL F		8.00	0021	01
		PEDESTAL		10.00	0021	01
		ROUNDING		2.00	0021	01
		SIGNAL HEAD		20.00	0021	01
Item T04.5305 Total:				430.00		
062	T04.5307	14 AWG 7 CONDUCTOR CABLE	LF			
		PURGATORY				
		CABINET		70.00	0021	01
		CABINET TO H1		21.00	0021	01
		H1		70.00	0021	01
		H1 TO H2		156.00	0021	01
		H1 TO H4		65.00	0021	01
		H1 TO MAST ARM		33.00	0021	01
		H2		30.00	0021	01
		H2 TO H3		90.00	0021	01
		H2 TO P1		23.00	0021	01
		H2 TO P2			0021	01
		H3		20.00	0021	01
		H3 TO P2/3		14.00	0021	01
		H4		10.00	0021	01
		H4 TO H5		47.00	0021	01
		H5		10.00	0021	01
		H5 TO P4		4.00	0021	01
		MAST ARM		90.00	0021	01
		MAST ARM T SIGNAL B		45.00	0021	01
		MAST ARM TO SIGNAL d		31.00	0021	01
		MAST ARM TO SIGNAL G		23.00	0021	01
		P1 HEAD		5.00	0021	01
		P1 POLE		15.00	0021	01
		P2/3 HEAD		10.00	0021	01
		P2/3 POLE		30.00	0021	01

Distribution of Quantities

Project Name - Aquidneck Avenue HSIP
Estimate Name - Addendum to Advertising Estimate
R.I. Contract No. - 2018-CT-087
FAP Nos: STPG-HSIP(057)

Item No.	Item Code	Description	UM	Qty.	Pay Code	Seq. No.
062	T04.5307	Cont.				
		P4 HEAD		5.00	0021	01
		P4 POLE		15.00	0021	01
		ROUNDING		3.00	0021	01

Distribution of Quantities

Project Name - Aquidneck Avenue HSIP
 Estimate Name - Addendum to Advertising Estimate
 R.I. Contract No. - 2018-CT-087
 FAP Nos: STPG-HSIP(057)

Item No.	Item Code	Description	UM	Qty.	Pay Code	Seq. No.
062	T04.5307	Cont. SIGNALs b/d/g		15.00	0021	01
Item T04.5307 Total:				950.00		
063	T05.0100	PRECAST TYPE A HANDHOLE STANDARD	EACH			
		18.2.0				
		PURGATORY				
		11+95		1.00	0021	01
		12+93		1.00	0021	01
Item T05.0100 Total:				2.00		
064	T05.0400	BREAK INTO EXISTING HANDHOLE	EACH			
		PURGATORY				
		12+36		1.00	0021	01
		12+93		1.00	0021	01
		40+44		1.00	0021	01
Item T05.0400 Total:				3.00		
065	T06.5130	3 INCH SCHEDULE 40 POLYVINYL	LF			
		CHLORIDE PLASTIC CONDUIT -				
		UNDERGROUND				
		PURGATORY				
		H2 TO P1		23.00	0021	01
		H3 TO P3		7.00	0021	01
		H5 TO P5		4.00	0021	01
		ROUNDING		6.00	0021	01
Item T06.5130 Total:				40.00		
066	T06.5430	3 INCH SCHEDULE 80 POLYVINYL	LF			
		CHLORIDE PLASTIC CONDUIT - UNDER				
		EXISTING PAVEMENT				
		PURGATORY				
		H2 TO H3		45.00	0021	01
		H4 TO H5		47.00	0021	01

Distribution of Quantities

Project Name - Aquidneck Avenue HSIP
 Estimate Name - Addendum to Advertising Estimate
 R.I. Contract No. - 2018-CT-087
 FAP Nos: STPG-HSIP(057)

Item No.	Item Code	Description	UM	Qty.	Pay Code	Seq. No.
066	T06.5430	Cont. ROUNDING		8.00	0021	01
Item T06.5430 Total:				100.00		
067	T11.2008	TRAFFIC SIGNAL STANDARD,8 FOOT,STD 19.4.0 ALUMINUM PEDESTAL POLE AND FOUNDATION PURGATORY	EACH			
		11+98		1.00	0021	01
		12+68		1.00	0021	01
Item T11.2008 Total:				2.00		
068	T11.2010	TRAFFIC SIGNAL STANDARD,10 FT, STD 19.4.0 ALUMINUM PEDESTAL POLE AND FOUNDATION PURGATORY	EACH			
		12+88		1.00	0021	01
Item T11.2010 Total:				1.00		
069	T13.1000	TRAFFIC DETECTORS-LOOP, STANDARD 19.6.0 PURGATORY	LF			
		LOOP 1		91.00	0021	01
		LOOP 2		91.00	0021	01
		LOOP 3		91.00	0021	01
		LOOP 4		52.00	0021	01
		LOOP 5		91.00	0021	01
		ROUNDING		4.00	0021	01
Item T13.1000 Total:				420.00		
070	T13.8210	ACCESSIBLE PEDESTRIAN DETECTOR - PUSHBUTTON WITH SIGN PURGATORY	EACH			
		11+98		1.00	0021	01

Distribution of Quantities

Project Name - Aquidneck Avenue HSIP
 Estimate Name - Addendum to Advertising Estimate
 R.I. Contract No. - 2018-CT-087
 FAP Nos: STPG-HSIP(057)

Item No.	Item Code	Description	UM	Qty.	Pay Code	Seq. No.
070	T13.8210	Cont.				
		12+68		1.00	0021	01
		12+88		2.00	0021	01
Item T13.8210 Total:				4.00		
071	T14.3513	1 WAY 3 SECTION MAST ARM MOUNTED SIGNAL HEAD 12 INCH PURGATORY INTERSECTION	EACH			
				3.00	0021	01
Item T14.3513 Total:				3.00		
072	T14.3516	1 WAY 4 SECTION MAST ARM MOUNTED SIGNAL HEAD 12 INCH (W/ DUAL IND DUAL ROW L.E.D. ARROW) PURGATORY INTERSECTION	EACH			
				3.00	0021	01
Item T14.3516 Total:				3.00		
073	T14.9902	1 WAY 2 SECTION PEDESTAL MOUNTED LED PEDESTRIAN SIGNAL HEAD 12 INCH W/ COUNTDOWN TIMER PURGATORY INTERSECTION	EACH			
				2.00	0021	01
Item T14.9902 Total:				2.00		
074	T14.9903	1 WAY 2 SECTION BRACKETT MOUNTED LED PEDESTRIAN SIGNAL HEAD 12 INCH W/ COUNTDOWN TIMER PURGATORY INTERSECTION	EACH			
				2.00	0021	01
Item T14.9903 Total:				2.00		
075	T15.0100	DIRECTIONAL REGULATORY AND WARNING SIGNS	SF			

Distribution of Quantities

Project Name - Aquidneck Avenue HSIP
 Estimate Name - Addendum to Advertising Estimate
 R.I. Contract No. - 2018-CT-087
 FAP Nos: STPG-HSIP(057)

Item No.	Item Code	Description	UM	Qty.	Pay Code	Seq. No.
075	T15.0100 Cont.	CRESCENT				
		-		3.00	0021	01
		--		4.00	0021	01
		---		3.00	0021	01
		----		3.00	0021	01
		-----		3.00	0021	01
		30+26		3.00	0021	01
		30+27		6.00	0021	01
		30+30		6.00	0021	01
		30+31		6.00	0021	01
		30+79		3.00	0021	01
		32+05		3.00	0021	01
		32+06		4.00	0021	01
		PURGATORY				
		----		6.67	0021	01
		10+40 RT		4.33	0021	01
		10+92		6.67	0021	01
		11+53		2.00	0021	01
		11+54		3.00	0021	01
		11+55		2.19	0021	01
		11+94		6.00	0021	01
		40+32		2.04	0021	01
		40+33		5.00	0021	01
		ROUNDING		1.10	0021	01
Item T15.0100 Total:				86.00		
076	T15.0200	REMOVE AND RELOCATE DIRECTIONAL	EACH			
		REGULATORY AND WARNING SIGN				
		CRESCENT				
		20+64		2.00	0021	01
		30+75		1.00	0021	01
Item T15.0200 Total:				3.00		

Distribution of Quantities

Project Name - Aquidneck Avenue HSIP
Estimate Name - Addendum to Advertising Estimate
R.I. Contract No. - 2018-CT-087
FAP Nos: STPG-HSIP(057)

Item No.	Item Code	Description	UM	Qty.	Pay Code	Seq. No.
077	T15.1100	STREET SIGN - OVERHEAD MOUNTED	EACH			

Distribution of Quantities

Project Name - Aquidneck Avenue HSIP
 Estimate Name - Addendum to Advertising Estimate
 R.I. Contract No. - 2018-CT-087
 FAP Nos: STPG-HSIP(057)

Item No.	Item Code	Description	UM	Qty.	Pay Code	Seq. No.
077	T15.1100 Cont.	PURGATORY				
		12+40		1.00	0021	01
Item T15.1100 Total:				1.00		
078	T20.0006	6 INCH WHITE FAST - DRYING	LF			
		WATERBORNE PAVEMENT MARKING PAINT				
		CRESCENT				
		10+00 TO 10+54		55.00	0021	01
		10+00 TO 13+00		295.00	0021	01
		10+86 TO 11+06		21.00	0021	01
		11+58 TO 13+00		145.00	0021	01
		30+29 TO 30+91		65.00	0021	01
		ROUNDING		9.00	0021	01
		PURGATORY				
		10+50 TO 11+95		46.00	0021	01
		10+50 TO 13+25		262.00	0021	01
		11+08 TO 12+00		100.00	0021	01
		11+24 TO 11+05		75.00	0021	01
		12+84 TO 13+21		42.00	0021	01
		40+25 TO 41+35		90.00	0021	01
		40+28 TO 41+58		230.00	0021	01
		40+35 TO 40+60		26.00	0021	01
		RIGHT LANE EB DEVELOPMENT		29.00	0021	01
Item T20.0006 Total:				1,490.00		
079	T20.0008	8 INCH WHITE FAST - DRYING	LF			
		WATERBORNE PAVEMENT MARKING PAINT				
		PURGATORY				
		10+69 TO 10+92			0021	01
Item T20.0008 Total:				**DELETED**		
080	T20.0012	12 INCH WHITE FAST - DRYING	LF			
		WATERBORNE PAVEMENT MARKING PAINT				

Distribution of Quantities

Project Name - Aquidneck Avenue HSIP
Estimate Name - Addendum to Advertising Estimate
R.I. Contract No. - 2018-CT-087
FAP Nos: STPG-HSIP(057)

Item No.	Item Code	Description	UM	Qty.	Pay Code	Seq. No.
080	T20.0012	Cont. CRESCENT				

Distribution of Quantities

Project Name - Aquidneck Avenue HSIP
 Estimate Name - Addendum to Advertising Estimate
 R.I. Contract No. - 2018-CT-087
 FAP Nos: STPG-HSIP(057)

Item No.	Item Code	Description	UM	Qty.	Pay Code	Seq. No.
080	T20.0012	Cont.				
		10+60 TO 10+81		59.00	0021	01
		10+61 TO 10+74		13.00	0021	01
		11+14 TO 11+49		88.00	0021	01
		11+32 TO 11+45		14.00	0021	01
		ROUNDING		6.00	0021	01
		PURGATORY				
		11+94 TO 11+95		22.00	0021	01
		12+86 TO 12+87		14.00	0021	01
		40+34 TO 40+35		33.00	0021	01
Item T20.0012 Total:				249.00		
081	T20.0104	4 INCH YELLOW FAST - DRYING	LF			
		WATERBORNE PAVEMENT MARKING PAINT				
		CRESCENT				
		10+00 TO 13+00		275.00	0021	01
		CENTERLINE		25.00	0021	01
		PURGATORY				
		10+50 TO 12+00		150.00	0021	01
		13+00 TO 13+25		38.00	0021	01
Item T20.0104 Total:				488.00		
082	T20.0106	6 INCH YELLOW FAST - DRYING	LF			
		WATERBORNE PAVEMENT MARKING PAINT				
		CRESCENT				
		30+29 TO 30+91		55.00	0021	01
		ROUNDING		5.00	0021	01
		PURGATORY				
		40+27 TO 41+37		50.00	0021	01
		40+28 TO 41+37		102.00	0021	01
		40+63 TO 41+37		109.00	0021	01
Item T20.0106 Total:				321.00		
083	T20.0820	FAST DRYING WATERBORNE PAVEMENT	EACH			

Distribution of Quantities

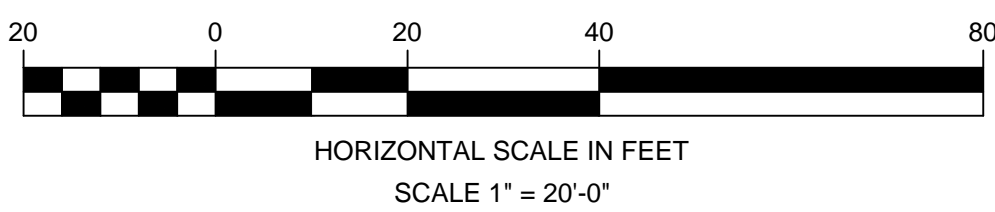
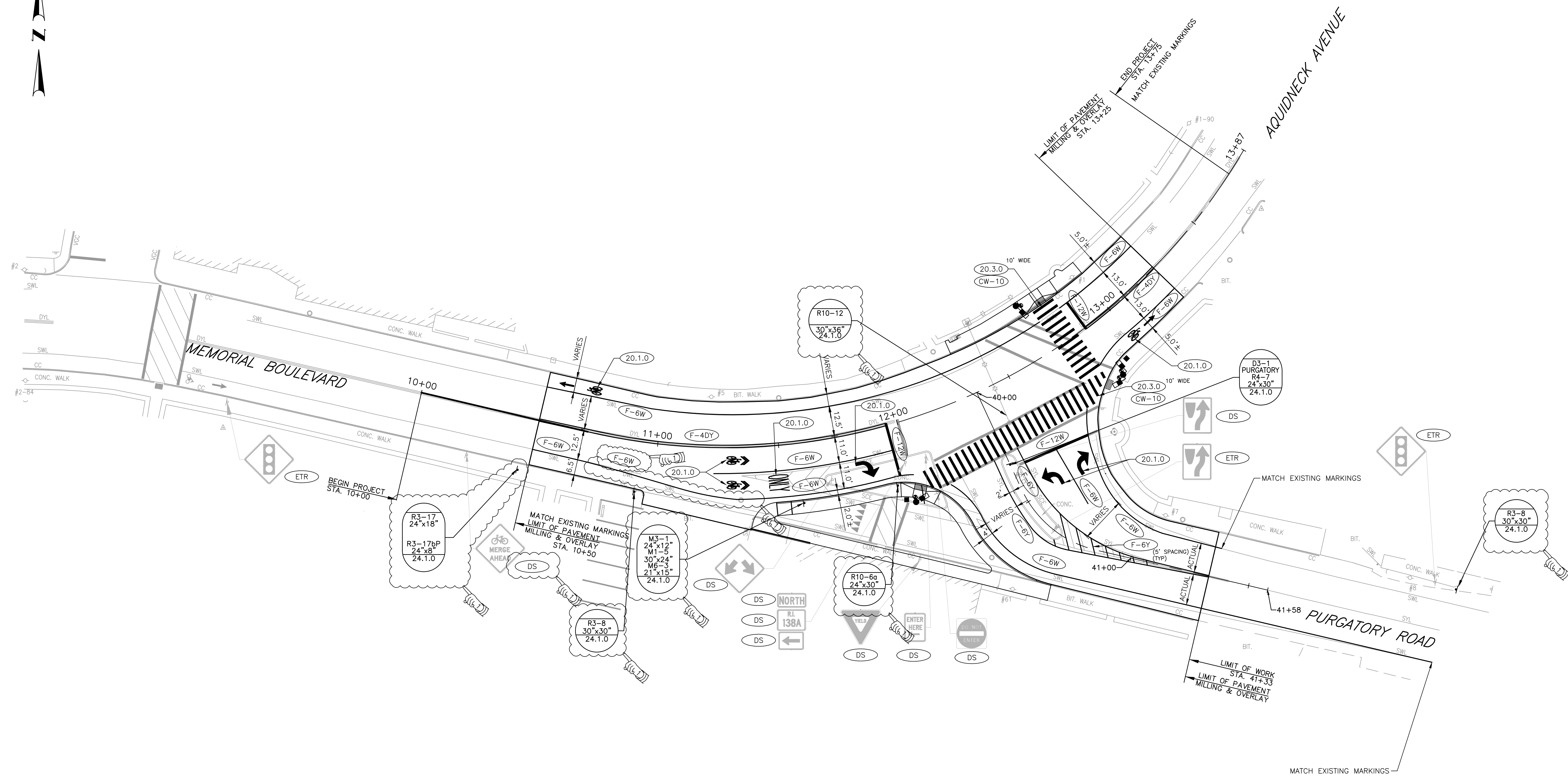
Project Name - Aquidneck Avenue HSIP
 Estimate Name - Addendum to Advertising Estimate
 R.I. Contract No. - 2018-CT-087
 FAP Nos: STPG-HSIP(057)

Item No.	Item Code	Description	UM	Qty.	Pay Code	Seq. No.
083	T20.0820	Cont. ARROW - STRAIGHT, LEFT, RIGHT, OR COMBINED STANDARD 20.1.0 PURGATORY				
		11+85		1.00	0021	01
		40+43		1.00	0021	01
		40+44		1.00	0021	01
Item T20.0820 Total:				3.00		
084	T20.0822	FAST DRYING WATERBONE PAVEMENT MARKING WORD "ONLY" STANDARD 20.1.0 PURGATORY	EACH			
		11+49		1.00	0021	01
Item T20.0822 Total:				1.00		
085	T20.0830	FAST-DRYING WATERBORNE PAINT PAVEMENT MARKING - HELMETED BICYCLIST SYMBOL WITH ARROW PURGATORY	EACH			
		10+69		1.00	0021	01
		11+31		1.00	0021	01
		11+32		1.00	0021	01
		13+00		1.00	0021	01
Item T20.0830 Total:				4.00		
086	914.5020	FLAGPERSONS - OVERTIME BOTH INTERSECTIONS 20% OF 914.5020	MHRS			
				90.00	0021	01
Item 914.5020 Total:				90.00		
087	T14.3713	1 WAY 3 SECTION PEDESTAL MOUNTED SIGNAL HEAD 12 INCH PURGATORY	EACH			
		INTERSECTION		1.00	0021	01

Distribution of Quantities

Project Name - Aquidneck Avenue HSIP
Estimate Name - Addendum to Advertising Estimate
R.I. Contract No. - 2018-CT-087
FAP Nos: STPG-HSIP(057)

Item No.	Item Code	Description	UM	Qty.	Pay Code	Seq. No.
087	T14.3713	Cont.	Item T14.3713 Total:	1.00		



Louis Berger
 166 VALLEY STREET, BUILDING 5
 PROVIDENCE, RI 02909
 TEL. +1.401.521.5980
 www.louisberger.com

REVISIONS		
NO.	DATE	BY
1	9.20.18	LBF

RHODE ISLAND
 DEPARTMENT OF TRANSPORTATION

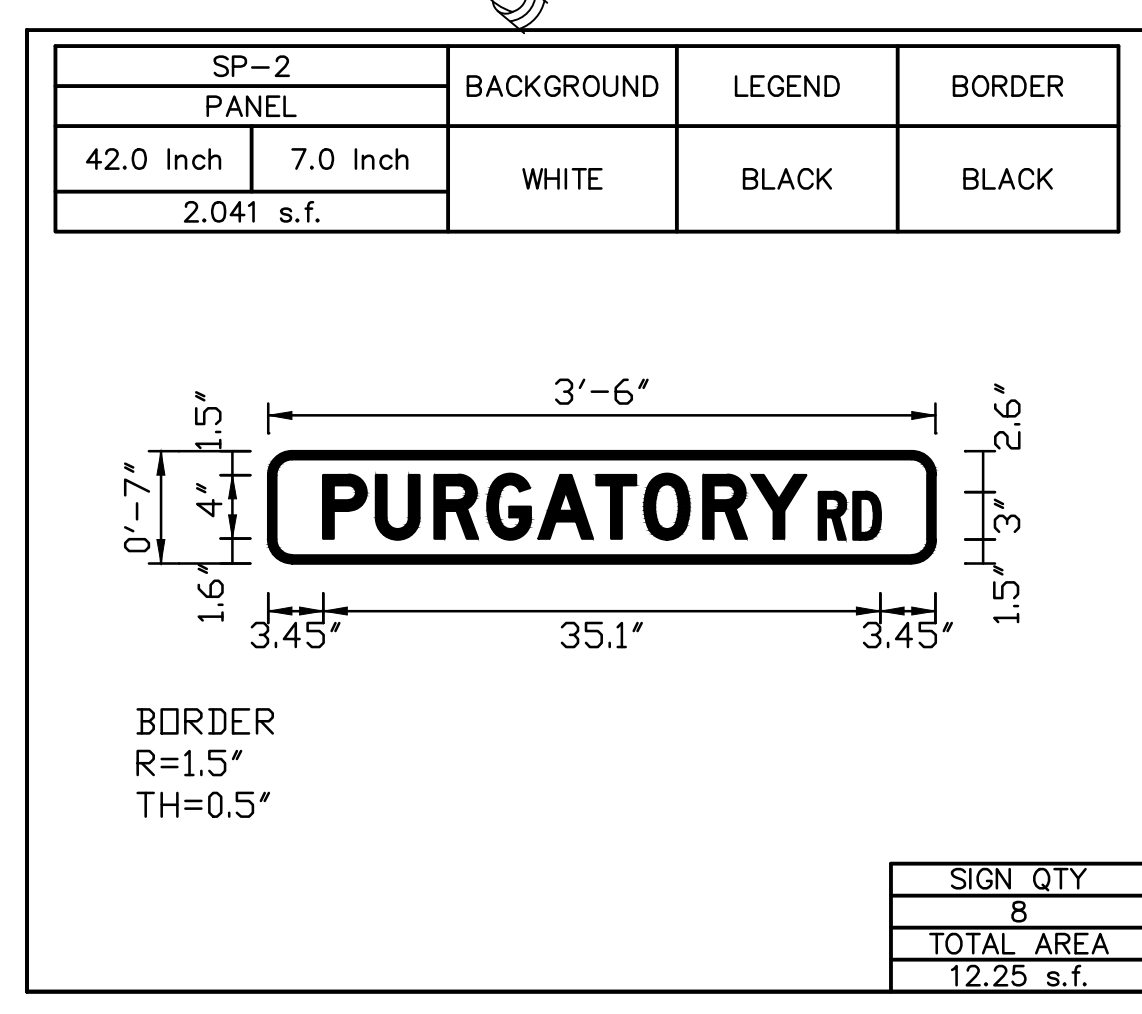
**MIDDLETOWN HIGHWAY
 SAFETY IMPROVEMENT
 PROGRAM (HSIP)**
 MIDDLETOWN, RHODE ISLAND

**PURGATORY RD./MEMORIAL BLVD.
 SIGNING AND PAVEMENT MARKING PLAN**
 SHEET 1 OF 1

CHECKED BY LBF DATE 8/1/18 SCALE 1"=20'

PURGATORY PROPOSED TRAFFIC SIGN SUMMARY

IDENTIFICATION NUMBER	SIZE OF SIGN		TEXT	TEXT DIMENSIONS			NUMBER OF SIGN REQUIRED	COLOR			AREA IN SQUARE FEET
	WIDTH INCHES	HEIGHT INCHES		LETTER HEIGHT	VERTICAL SPACING	ARROW RTE MKR		BACK-GROUND	LEGEND	BORDER	
D3-1 (PURGATORY)	42	12	Purgatory Rd	SEE M.U.T.C.D. 2009 STANDARDS			1	SEE M.U.T.C.D. 2009 STANDARDS			2.04 ea =2.04
M1-5	30	24	R.I. 138A				1				5.00 ea =5.00
M3-1	24	12	NORTH				1				2.00 ea =2.00
M6-3	21	15	↑				1				2.19 ea =2.19
R3-8	30	30	↑ ONLY				1				6.25 ea =6.25
R3-8	30	30	ONLY ONLY				1				6.25 ea =6.25
R3-17	24	18	BIKE LANE				1				3.00 ea =3.00
R3-17bP	24	8	ENDS				1				1.33 ea =1.33
R4-7	24	30	↗				1				5.00 ea =5.00
R10-4b (R)	9	12	PUSH BUTTON FOR ↑				1				0.75 ea =0.75
R10-4b (L)	9	12	PUSH BUTTON FOR ←				3				0.75 ea =2.25
R10-6A	24	30	STOP HERE ON RED				1				5.00 ea =5.00
R10-12	30	36	LEFT TURN YIELD ON FLUORESCENT				1				7.50 ea =7.50



PURGATORY TEMPORARY TRAFFIC SIGN SUMMARY

IDENTIFICATION NUMBER	SIZE OF SIGN		TEXT	TEXT DIMENSIONS			NUMBER OF SIGN REQUIRED	COLOR			AREA IN SQUARE FEET
	WIDTH INCHES	HEIGHT INCHES		LETTER HEIGHT	VERTICAL SPACING	ARROW RTE MKR		BACK-GROUND	LEGEND	BORDER	
G20-2	36	18	END ROAD WORK	SEE M.U.T.C.D. 2009 STANDARDS			3	SEE M.U.T.C.D. 2009 STANDARDS			4.50 ea =13.50
M4-8A	24	18	END DETOUR				2				3.00 ea =6.00
M4-9	30	24	DETOUR ↑				1				5.00 ea =5.00
M4-9 (L)	30	24	DETOUR ←				2				5.00 ea =5.00
M4-9 (R)	30	24	DETOUR →				1				5.00 ea =5.00
M4-10R	48	18	DETOUR →				1				6.00 ea =6.00
R9-9	24	12	SIDEWALK CLOSED				2				2.00 ea =4.00
R9-11(L)	24	18	SIDEWALK CLOSED AHEAD ← CROSS HERE				1				3.00 ea =3.00
R9-11(R)	24	18	SIDEWALK CLOSED AHEAD → CROSS HERE				2				3.00 ea =6.00
R11-2	48	30	ROAD CLOSED				1				10.00 =10.00
R11-4	60	30	ROAD CLOSED TO THRU TRAFFIC				1				12.50 ea =12.50
SP-2 (PURGATORY)	42	7	Purgatory				7				2.04 ea =14.29
W20-1	36	36	ROAD WORK AHEAD				3				9.00 ea =27.00
W20-2	36	36	DETOUR AHEAD				3				9.00 ea =27.00
W20-3 (500 FT)	36	36	ROAD CLOSED 500 FT				1				9.00 ea =9.00
W20-4	36	36	ONE LANE ROAD AHEAD				3				9.00 ea =27.00
W20-7	36	36	ROAD WORK AHEAD				3				9.00 ea =27.00

REVISIONS		
NO.	DATE	BY
1	9.20.18	LBF

RHODE ISLAND
DEPARTMENT OF TRANSPORTATION

MIDDLETOWN HIGHWAY SAFETY IMPROVEMENT PROGRAM (HSIP)
MIDDLETOWN, RHODE ISLAND

PURGATORY/MEMORIAL BLVD.
TRAFFIC SIGN SUMMARY

SHEET 1 OF 1

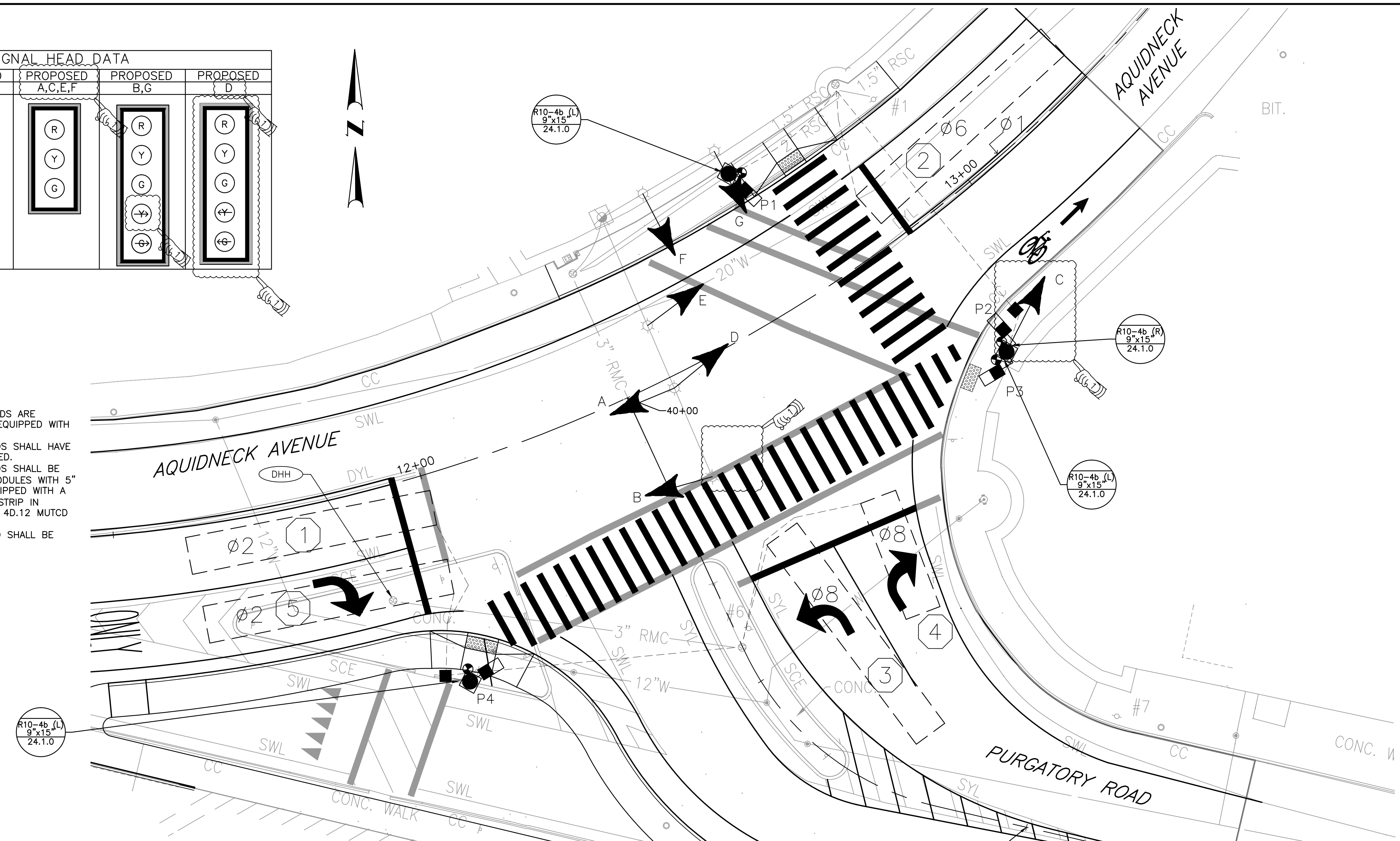
CHECKED BY LBF DATE 8/1/18 SCALE --

Louis Berger
166 VALLEY STREET, BUILDING 5
PROVIDENCE, RI 02909
TEL. +1.401.521.5980
www.louisberger.com

SIGNAL HEAD DATA

EXISTING A-G	PROPOSED P1-P4	PROPOSED A,C,E,F	PROPOSED B,G	PROPOSED D
(R) (Y) (G)	(P) (15)	(R) (Y) (G)	(R) (Y) (G) (P)	(R) (Y) (G) (P)

- SIGNAL HEAD NOTES:**
- 1) ALL PEDESTRIAN SIGNAL HEADS ARE PROPOSED AND SHALL BE EQUIPPED WITH BACKPLATES.
 - 2) ALL VEHICULAR SIGNAL HEADS SHALL HAVE ASSOCIATED WIRING REPLACED.
 - 3) ALL VEHICULAR SIGNAL HEADS SHALL BE EQUIPPED WITH 12" LED MODULES WITH 5" LOUVERED BACKPLATES EQUIPPED WITH A 3" YELLOW RETROREFLECTIVE STRIP IN ACCORDANCE WITH SECTION 4D.12 MUTCD LATEST EDITION.
 - 4) ALL VEHICULAR SIGNAL HEAD SHALL BE POLYCARBONATE.



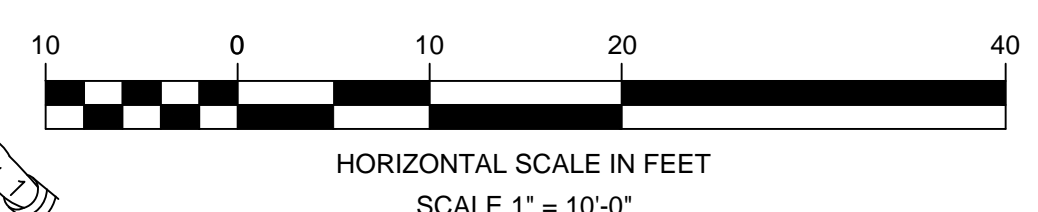
- GENERAL NOTES:**
1. THE CONTRACTOR SHALL SUPPLY AND INSTALL ON THE UPPER LEFT HAND CORNER OF THE BACK OR THE CONTROLLER CABINET DOOR A LAMINATED INTERSECTION GRAPHIC AND TABLE DEPICTING THE TRAFFIC DETECTOR RELAY CHANNEL ASSIGNMENTS. THE DIAGRAM SHALL BE A GRAPHIC OF THE INDIVIDUAL INTERSECTION ORIENTED SIMILAR TO THE PLANS SHOWING THE LOCATIONS OF EACH OF THE LOOP DETECTORS. THE DIAGRAM SHALL, AT A MINIMUM, INCLUDE DETECTOR NUMBERS, STREET NAME LABELS, NORTH ARROW, AND CONTROLLER, THE APPROACH NAME, DETECTOR NUMBER, TERMINAL NUMBER, DETECTOR RACK SLOT NUMBER, RELAY NUMBER, RELAY CHANNEL NUMBER, AND PHASE ASSOCIATED WITH EACH DETECTOR.
 2. A BARE GROUND WIRE SHALL BE PLACED IN ALL PVC CONDUITS AND SHALL BE BONDED TO GROUND RODS IN ACCORDANCE WITH SECTION T.03 OF THE RHODE ISLAND DEPARTMENT OF TRANSPORTATION STANDARD SPECIFICATIONS FOR ROAD AND BRIDGE CONSTRUCTION. "BARE GROUND WIRE" WILL NOT BE PAID FOR SEPARATELY BUT SHALL BE INCLUDED IN THE PRICE OF PVC CONDUIT ITEMS.
 3. FINAL PLACEMENT OF SIGNAL HEADS, DETECTORS, STOP BARS AND CROSSWALKS TO BE DETERMINED IN THE FIELD DURING CONSTRUCTION ACCORDING TO OBSERVED INTERSECTION CHARACTERISTICS BY THE ENGINEER.
 4. A 2-FOOT MINIMUM BUFFER SHALL BE PROVIDED BETWEEN THE CURB AND ALL LATERAL OBSTRUCTIONS (INCLUDING ALL SIGNAL POLES AND TRAFFIC/PEDESTRIAN SIGNAL HEADS) TO PROVIDE ADEQUATE CLEARANCE FOR TURNING VEHICLES.
 5. ALL FOUNDATIONS MUST HAVE CONES OR BARRELS BOLTED TO FOUNDATION BASES UNTIL ACTUAL POLE IS INSTALLED.
 6. WHEN PLACING TRAFFIC SIGNAL HANDHOLES OR CONDUIT IN EXISTING PORTLAND CEMENT CONCRETE SIDEWALKS, THE ENTIRE SIDEWALK SQUARE OF CONCRETE SHALL BE REPLACED IN ACCORDANCE WITH R.I. STANDARD 43.1.0. NO PATCHES WILL BE ALLOWED.
 7. ALL LOOP DETECTORS SHALL BE CENTERED WITHIN EACH LANE AS DELINEATED, UNLESS OTHERWISE DIMENSIONED ON PLANS.
 8. ALL LOOP DETECTORS SHALL BE CUT INTO THE FINAL PAVEMENT SURFACE COURSE.
 9. THE CONTRACTOR SHALL FURNISH, INSTALL, CONFIGURE, AND TEST THE ACCESSIBLE PEDESTRIAN PUSH BUTTONS FOR COMPLIANCE WITH THE SPECIFICATIONS T.13 DETECTORS AND RELAYS AND M.15 TRAFFIC CONTROL SYSTEMS.
 10. THE SIGNAL SHALL OPERATE IN "FREE" MODE DURING TIMES WHEN A PLAN IS NOT CALLED FOR.

TRAFFIC SIGNAL EQUIPMENT LEGEND

SYMBOL	DESCRIPTION	
EXISTING: (S)	PROPOSED: (S)	ELECTRICAL HANDHOLE, TYPE A PRECAST (RI STD 18.2.0)
EXISTING: (V)	PROPOSED: (V)	VEHICULAR SIGNAL HEAD
EXISTING: (P)	PROPOSED: (P)	PEDESTRIAN SIGNAL HEAD
EXISTING: (F)	PROPOSED: (F)	SIGNAL POLE & FOUNDATION
EXISTING: (PB)	PROPOSED: (PB)	PEDESTRIAN PUSH BUTTON
EXISTING: (D)	PROPOSED: (D)	TRAFFIC WIRE LOOP DETECTOR (RI STD 19.6.0A & 19.6.0B)

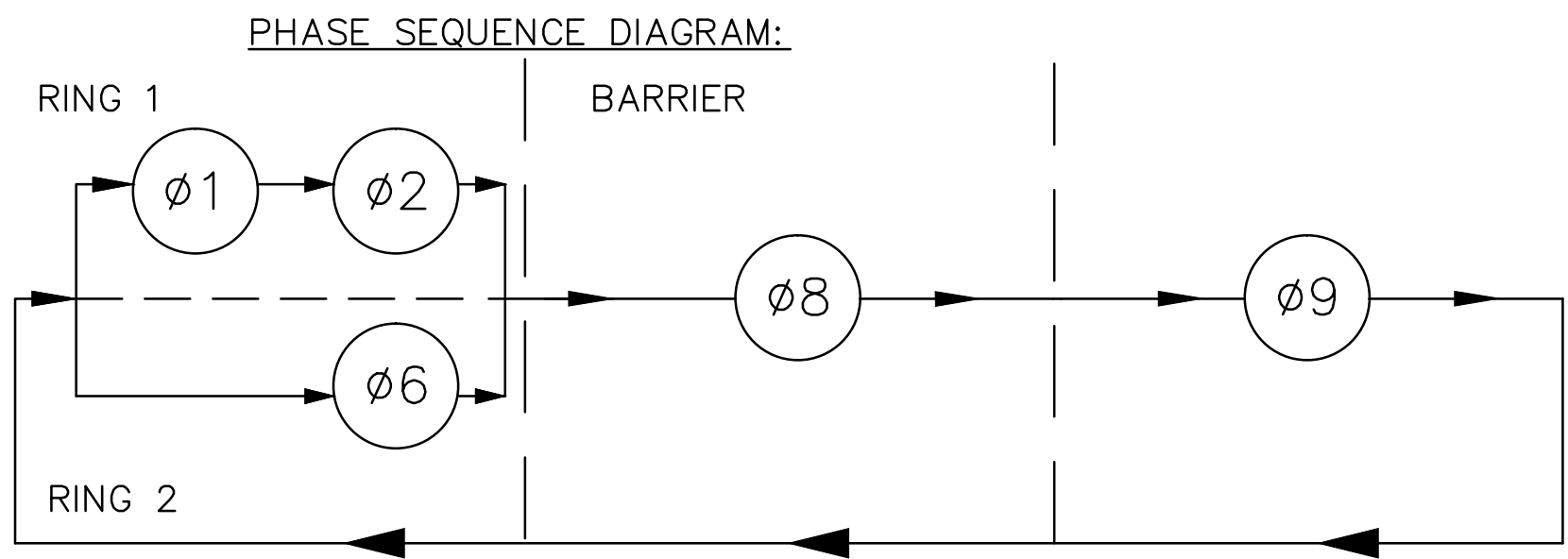
SEQUENCE AND TIMING DIAGRAM (PURGATORY ROAD @ AQUIDNECK AVENUE)

APPROACH	DIRECTION	HOUSING	Ø1	Ø2	Ø6	Ø8	Ø9	FLASHING OPERATION
MINIMUM INTERVAL			5	11	11	8		
VEHICLE EXTENSION			2.6	2.6	2.6	2.6		
MAXIMUM 1			15	10	10	40		
MAXIMUM 2			10	44	44	16		
YELLOW CLEARANCE			3.5	3.5	3.5	3.5		
RED CLEARANCE			1.5	1.5	1.5	1.5		
PED WALK CLEARANCE							7/25	
AQUIDNECK AVENUE	EB T	A	R	R	R	G	Y	R
AQUIDNECK AVENUE	EB R	B	R	R	G	Y	R	R
AQUIDNECK AVENUE	WB T	C,E	G	Y	R	G	Y	R
AQUIDNECK AVENUE	WB L	D	G/←	G/←	G/←	G	Y	R
PURGATORY ROAD	NB L	F	R	R	R	R	R	R
PURGATORY ROAD	NB R	G	Y	R	R	R	R	R
AQUIDNECK AVENUE	PEDESTRIAN X-ING	N-S	P1-P2	DW	DW	DW	DW	DW
PURGATORY ROAD	PEDESTRIAN X-ING	E-W	P3-P4	DW	DW	DW	DW	DW



DETECTOR NO. TABLE

DETECTOR NO.	NO. SECTION / SIZE	RELAY NUMBER	SLOT	DELAY (SEC)	CALL PHASE	REMARKS
1	1-6'x40'	1	2	3	Ø2	PROPOSED
2	1-6'x40'	2	3	3	Ø6	PROPOSED
3	1-6'x40'	2	2	3	Ø1	PROPOSED
4	1-6'x20'	1	4	3	Ø3	PROPOSED
5	1-6'x40'	1	4	5	Ø8	PROPOSED
6	1-6'x40'	1	4	5	Ø2	PROPOSED



- SEQUENCE AND TIMING NOTES:**
1. FLASHING OPERATION PER M.U.T.C.D SECTION 4B-18
 2. PERM = PERMISSIVE
 3. OL = OVERLAP
 4. MAXIMUM 1 = WEEKEND SUMMER
MAXIMUM 2 = 6-9 AM MON-FRI
MAXIMUM 3 = 3-6 PM MON-FRI
 5. PED. W/FDW UPON PUSHBUTTON ACTUATION ONLY
 6. GREEN CLEARANCE TO BE SUFFICIENT FOR PEDESTRIAN W/FDW UPON PUSH BUTTON ACTUATION
 7. FYA= FLASHING YELLOW ARROW

ADDENDUM 1

TRAFFIC EQUIPMENT REMOVE AND SALVAGE TABLE

QTY	DESCRIPTION
7	1 WAY 3 SECTION MAST ARM MOUNT LED SIGNAL HEADS AND ASSOCIATED MOUNTING BRACKETS

- TRAFFIC SIGNAL REMOVAL NOTES:**
- 1) ALL EXISTING SIGNAL EQUIPMENT WHICH IS REMOVED SHALL BE RETURNED TO RIDOT MAINTENANCE.

R.I. STATE TRAFFIC SIGNAL NO 651

RHODE ISLAND DEPARTMENT OF TRANSPORTATION

MIDDLETOWN HIGHWAY SAFETY IMPROVEMENT PROGRAM (HSIP)
MIDDLETOWN, RHODE ISLAND

PURGATORY RD./MEMORIAL BLVD. TRAFFIC SIGNAL PLAN

SHEET 1 OF 1

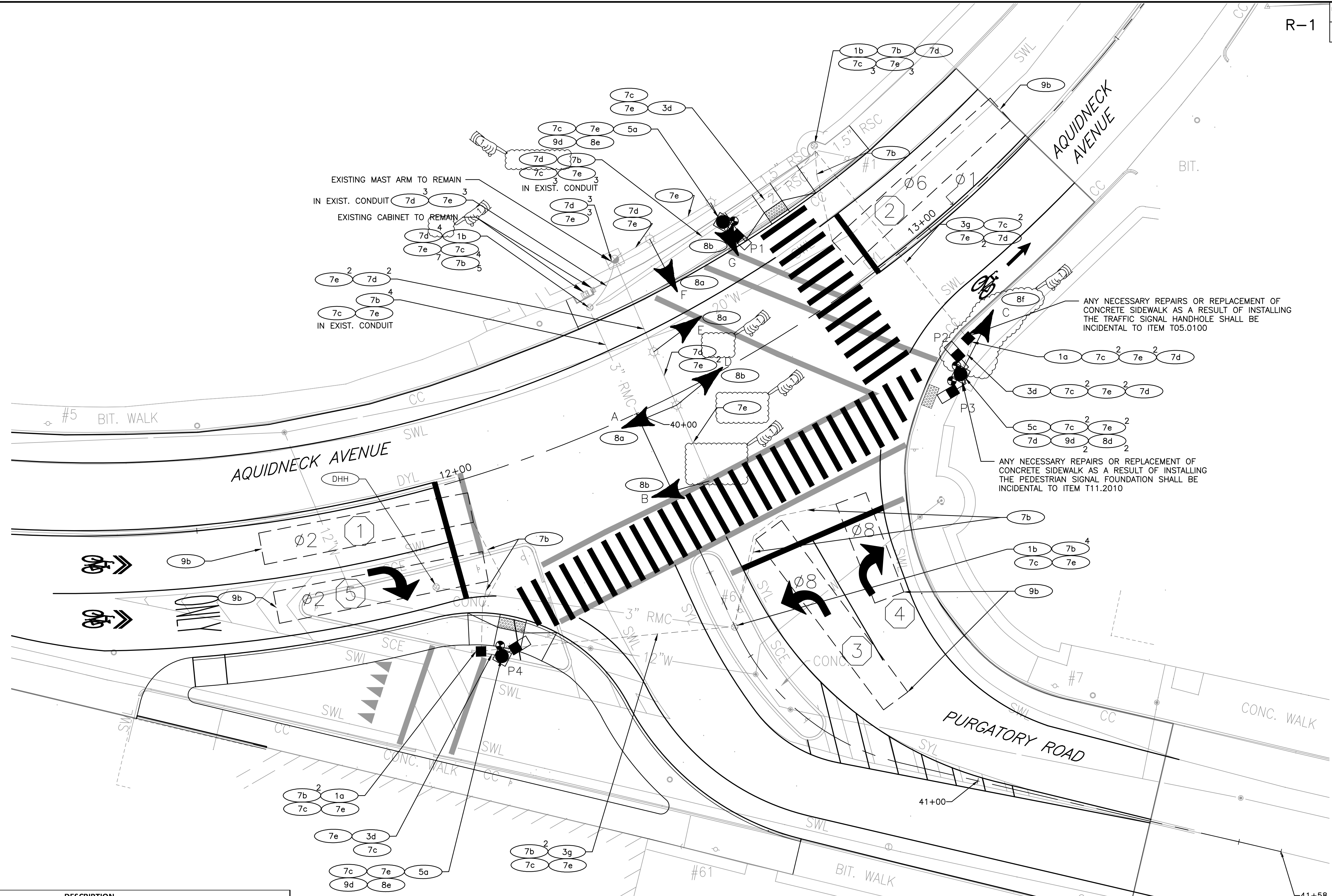
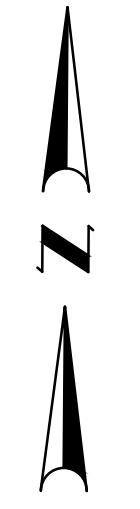
REVISIONS:

NO.	DATE	BY
1	9.20.18	LBF

CHECKED BY: LBF DATE: 8/1/18 SCALE: 1"=10'

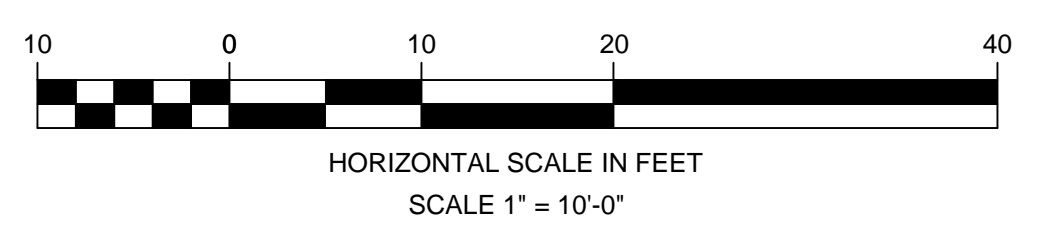
Louis Berger
 166 VALLEY STREET, BUILDING 5
 PROVIDENCE, RI 02909
 TEL. +1.401.521.5980
 www.louisberger.com

FED. ROAD DIV. NO.	STATE	FEDERAL AID PROJECT NO.	FISCAL YEAR	SHEET NO.	TOTAL SHEETS
	RI	STPG-HSIP(057)	2018	19	



No.	SYMBOL	ITEM CODE	DESCRIPTION
1a	■	T05.0100	HANDHOLE TYPE A - PRECAST STD. 18.2.0
1b	⊗	T05.0400	BREAK INTO EXISTING HANDHOLE
3d	—	T06.5130	3 INCH POLYVINYL CHLORIDE PLASTIC CONDUIT (SCHEDULE 40) UNDERGROUND
3g	—	T06.5430	3 INCH POLYVINYL CHLORIDE PLASTIC CONDUIT (SCHEDULE 80) UNDER EXISTING PAVEMENT
5a	●	T11.2008	TRAFFIC SIGNAL STANDARD, 8 FOOT, ALUMIMUM PEDESTAL POLE AND FOUNDATION STD 19.4.0
5c	●	T11.2010	TRAFFIC SIGNAL STANDARD, 10 FOOT, ALUMIMUM PEDESTAL POLE AND FOUNDATION STD 19.4.0
7b	—	T04.5302	14 AWG 2 CONDUCTOR TWISTED SHIELDED CABLE
7c	—	T04.5303	14 AWG 3 CONDUCTOR CABLE
7d	—	T04.5305	14 AWG 5 CONDUCTOR CABLE
7e	—	T04.5407	14 AWG 7 CONDUCTOR CABLE
8a	▶	T14.3513	1 WAY 3 SECTION MAST ARM MOUNTED SIGNAL HEAD 12 INCH
8b	▶	T14.3516	1 WAY, 4-SECTION, MAST ARM MOUNTED SIGNAL HEAD, 12-INCH, (w/DUAL IND, DUAL ROW L.E.D ARROW)
8e	▶	T14.9902	1 WAY 2 SECTION PEDESTAL MOUNTED LED PEDESTRIAN SIGNAL HEAD 12 INCH W/ COUNTDOWN TIMER
8d	▶	T14.9903	1 WAY 2 SECTION BRACKET MOUNTED LED PEDESTRIAN SIGNAL HEAD 12 INCH W/ COUNTDOWN TIMER
8f	▶	T14.3713	1 WAY, 3 SECTION PESTAL MOUNTED SIGNAL HEAD 12 INCH
8g	—	201.0626	SALVAGE EXISTING SIGNAL HEAD
9b	—	T13.1000	TRAFFIC DETECTOR - LOOP STANDARD 19.6.0
9d	—	T13.8210	ACCESSIBLE PEDESTRIAN PUSH BUTTON DETECTOR WITH SIGN AND ASSOCIATED EQUIPMENT

Addendum 1



Louis Berger
 166 VALLEY STREET, BUILDING 5
 PROVIDENCE, RI 02909
 TEL. +1.401.521.5980
 www.louisberger.com

R.I. STATE TRAFFIC SIGNAL NO. 651

RHODE ISLAND
 DEPARTMENT OF TRANSPORTATION

**MIDDLETOWN HIGHWAY
 SAFETY IMPROVEMENT
 PROGRAM (HSIP)**
 MIDDLETOWN, RHODE ISLAND

**PURGATORY RD./MEMORIAL BLVD.
 WIRING & CONDUIT PLAN**

SHEET 1 OF 1

REVISIONS		
NO.	DATE	BY
1	9.24.18	LBF

CHECKED BY LBF DATE 8/1/18 SCALE 1"=10'



Project Name: **Middletown Highway Safety Improvement Project**

RI Design Contract No(s): **2015-ET-028**

RI Construction Contract No(s): **2018-CT-087**

Submission: **PS&E**

Date: **8/24/2018**

PROJECT INFORMATION

Brief Project Description: This project is for the safety improvement of two intersections located along Aquidneck Avenue in Middletown, RI. Work at the intersection of Aquidneck Avenue and Purgatory Road consists of implementing traffic calming improvements including the removal of slip lane, addition of pedestrian signal heads, and the installation of a bump out. Work at the intersection of Aquidneck Avenue and Crescent Road consists of the realignment Crescent Road and the installation of an island. Equipment to be used will be typical of roadway work including milling and paving machines.

General Work Limits: The work will take place along Aquidneck Avenue, at the intersections of Crescent and Purgatory Road. Portions of work will require temporary restrictions to traffic, including road closures of Crescent and Purgatory, lane closures, lane shifts, shoulder closure, and detours. The duration of each restriction will vary depending on each work operation.

WORK ZONE LOCATIONS

ROADWAY NAME or INTERSECTION	FROM	TO	APPROX. LENGTH
Crescent Road & Aquidneck Avenue	Center of Intersection	approximately 500' back on	1,500 ft
Purgatory Road & Aquidneck Avenue		each approach	1,500 ft

General Project Schedule*: This project is expected to begin in March of 2019 with substantial completion in November of 2019.

*The information in this section is not intended to and shall not supersede the approved schedule and milestone/completion dates for the project.

TRAFFIC-RELATED WORK RESTRICTIONS

General Restrictions: Traffic cannot be impacted Memorial Day through Labor Day weekend.

Holiday Restrictions: NO LANE AND/OR SHOULDER CLOSURES ALLOWED AFTER 1:00 PM ON THE FRIDAY PRECEDING A HOLIDAY WEEKEND.

EASTER SUNDAY:

-No lane and/or shoulder closures allowed on Saturday and/or Sunday.

NEW YEAR'S DAY, INDEPENDENCE DAY, *VETERANS DAY & CHRISTMAS DAY:

-No lane and/or shoulder closures allowed after 1:00 PM on the day before the holiday.

-No lane and/or shoulder closures allowed on the holiday.

***MARTIN LUTHER KING DAY, MEMORIAL DAY, *VICTORY DAY, LABOR DAY & * COLUMBUS DAY:**

-No lane and/or shoulder closures allowed on Saturday, Sunday and Monday.

****THANKSGIVING DAY:**

-No lane and/or shoulder closures allowed after 1:00 PM on the Wednesday preceding Thanksgiving Day.

-No lane and/or shoulder closures allowed on Thanksgiving Day, Friday, Saturday and Sunday.

*****ELECTION DAY:**

-No lane and/or shoulder closures allowed on Election Day.

*Note: Lane and/or shoulder closures may be implemented after 7:00 PM on Monday.

** Note: Lane and/or shoulder closures may be implemented after 10:00 PM on Sunday.

***Note: Lane and/or shoulder closures may be implemented after 9:00 PM on Election Day.

TEMPORARY TRAFFIC CONTROL PLANS

These RIDOT- and/or Designer-Developed TTC Plans will be used during the work on this project

RIDOT TYPICAL TTC PLANS	Included in:	
	TMP	Plan Set
<input type="checkbox"/> Mobile Operation	<input type="checkbox"/>	<input type="checkbox"/>
<input type="checkbox"/> Work Beyond the Shoulder	<input type="checkbox"/>	<input type="checkbox"/>
<input type="checkbox"/> Shoulder Closure - Two Lane Road	<input type="checkbox"/>	<input type="checkbox"/>
<input type="checkbox"/> Shoulder Closure - Limited Access	<input type="checkbox"/>	<input type="checkbox"/>
<input checked="" type="checkbox"/> 1-Side Lane Shift - Two Lane Road	<input type="checkbox"/>	<input checked="" type="checkbox"/>
<input type="checkbox"/> 2-Side Lane Shift - Two Lane Road	<input type="checkbox"/>	<input type="checkbox"/>
<input type="checkbox"/> Lane Shift - Limited Access	<input type="checkbox"/>	<input type="checkbox"/>
<input checked="" type="checkbox"/> Lane Closure - Two Lane Road	<input type="checkbox"/>	<input checked="" type="checkbox"/>
<input type="checkbox"/> Lane Closure - Four Lane Road	<input type="checkbox"/>	<input type="checkbox"/>
<input type="checkbox"/> Lane Closure - Limited Access	<input type="checkbox"/>	<input type="checkbox"/>
<input type="checkbox"/> Double Lane Closure - Limited Access	<input type="checkbox"/>	<input type="checkbox"/>

DESIGNER-DEVELOPED TTC PLANS	Included in:	
	TMP	Plan Set
Purgatory TTC- Phase 1&3	<input type="checkbox"/>	<input checked="" type="checkbox"/>
Purgatory TTC - Phase 2	<input type="checkbox"/>	<input checked="" type="checkbox"/>
Purgatory TTC- Phase 4	<input type="checkbox"/>	<input checked="" type="checkbox"/>
Purgatory TTC- Detour 1	<input type="checkbox"/>	<input checked="" type="checkbox"/>
	<input type="checkbox"/>	<input type="checkbox"/>
Crescent TTC- Phase 1	<input type="checkbox"/>	<input checked="" type="checkbox"/>
Crescent TTC- Detour 1	<input type="checkbox"/>	<input checked="" type="checkbox"/>
Crescent TTC- Phase 2	<input type="checkbox"/>	<input checked="" type="checkbox"/>
Crescent TTC- Phase 3	<input type="checkbox"/>	<input checked="" type="checkbox"/>
Crescent TTC- Phase 4	<input type="checkbox"/>	<input checked="" type="checkbox"/>
	<input type="checkbox"/>	<input type="checkbox"/>

PUBLIC INFORMATION PLAN

These strategies will be used to provide information concerning the project to road users and the community

SELECTED STRATEGIES

- RIDOT travel advisories news releases
- RIDOT travel advisories web site
- RIDOT 511 traveler information system

RESPONSIBILITIES / REQUIREMENTS / SPECIAL CONSIDERATIONS

- RIDOT TMP Imp. Mngr. to send RIDOT notification form to Communications min. 48 hrs. in advance of restrictions.
- RIDOT TMP Imp. Mngr. to send RIDOT notification form to Communications min. 48 hrs. in advance of restrictions.
- RIDOT TMP Imp. Mngr. to send RIDOT notification form to RIDOT TMC min. 48 hrs. in advance of restrictions.

TRANSPORTATION OPERATIONS PLAN

These strategies will be used to provide improved transportation operations/safety within project work zones

SELECTED STRATEGIES

- Turn restrictions
- Speed limit reduction/variable speed limits
- Project on-site safety training
- Dedicated project work zone ITS
- RIDOT Transportation Management Center
- Cooperative police enforcement

RESPONSIBILITIES / REQUIREMENTS / SPECIAL CONSIDERATIONS

PERFORMANCE MONITORING, CHANGES TO TMP, & CONTINGENCIES

The Contractor's TMP Implementation Manager (if identified below) is responsible for keeping the portion of the project being used by public traffic in a condition that (1) safely and adequately accommodates such traffic and (2) is in accordance with the Traffic-Related Work Restrictions, the Temporary Traffic Control Plans, and where appropriate, the other transportation management strategies identified above. The RIDOT TMP Implementation Manager or his/her responsible designee should (1) inspect the project work zones at initial setup, at the start of each subsequent work day, and just prior to extended breaks in the work (e.g., weekends) for conformance with the Temporary Traffic Control Plans, the ATSSA Quality Guidelines for Temporary Traffic Control Devices and Features, and where applicable, the other transportation management strategies identified above and (2) document all work zone-related feedback and complaints that are received from the public.

If at any time (1) a significant deviation from any of the strategies included in the TMP (e.g., the use of an alternate construction sequence) is desired by one or more members of the project implementation team, (2) field observations and/or data suggest that impacts to road users are or will be unacceptable, or (3) one or more performance requirements established in the TMP are not being met in the field, the RIDOT TMP Implementation Manager shall report the situation to his/her supervisor or Division/Section/Unit manager. The supervisor / manager will coordinate with the State Traffic Engineer, the Traffic Management Chief, the TMP Implementation Manager(s), the Chief Engineer, and/or other interested parties as appropriate and/or necessary to consider and determine whether revised and/or alternate strategies should be implemented in an effort to lessen the adverse safety and/or mobility impacts of the project. If the supervisor / manager deems that strategy changes should be implemented, the changes shall be documented in a revised version of the TMP and the Traffic Management Chief, the State Traffic Engineer, and the Chief Engineer must approve of the revised TMP prior to their implementation.

If a significant deviation from any of the strategies included in the TMP is requested by the Contractor, unless directed otherwise by the RIDOT the Contractor is responsible for preparing and submitting to the RIDOT TMP Implementation Manager appropriate documentation (e.g., design calculations, analysis reports, Temporary Traffic Control Plans, etc.) showing that the requested change(s) are (1) feasible and (2) expected to result in safety and mobility impacts that are no more adverse than the impacts resulting from the strategies already included in the latest approved TMP. The RIDOT will review and consider the submittal(s) as described in the preceding paragraph and will determine whether the changes should be implemented. If the requested changes are approved by the RIDOT, unless otherwise directed by the RIDOT the Contractor shall prepare and submit to the RIDOT TMP Implementation Manager a revised version of the latest approved TMP in both printed and electronic (Microsoft® Excel) format that documents all of the approved changes. Work to implement the changes shall not begin until the Traffic Management Chief, the State Traffic Engineer, and the Chief Engineer have approved of the revised TMP.

When unexpected events (e.g., crashes, inclement weather, unforeseen traffic demands, etc.) occur in a project work zone where one or more lanes are closed, the RIDOT TMP Implementation Manager or his/her responsible designee should (1) determine whether or not the lane closure(s) can/should be removed in order to improve traffic operations and/or minimize delays and (2) if deemed appropriate, take action to remove the lane closure(s).

Other

Requirements:

TMP APPROVALS

All approvals must be obtained prior to start of work

Administrator, Project Management		
Signature:		
	David Fish, PE	
Date:	9-20-18	
Revision #	Initials	Date

STATE TRAFFIC ENGINEER		
Signature:		
	Steve Pristawa, PE	
Date:	9-17-18	
Revision #	Initials	Date

CHIEF ENGINEER		
Signature:		
	Robert Rocchio, PE	
Date:	9/29/18	
Revision #	Initials	Date

TMP IMPLEMENTATION MANAGERS

Project managers with the primary responsibility & authority for implementation of this TMP

RIDOT	
Name:	Songhap Taing, PMP
Title:	Project Manager 1
Unit:	Division of Project Management
Office Phone:	401-222-2023 x4383
Mobile Phone:	401-641-6730
E-Mail:	Songhap.Taing@dot.ri.gov

CONTRACTOR (if contract work)	
Name:	
Title:	
Company/Unit:	
Office Phone:	
Mobile Phone:	
E-Mail:	

ATTACHMENT A: LANE CLOSURE LIMITATIONS
MIDDLETOWN HIGHWAY SAFETY IMPROVEMENT PROJECTS
CRESCENT ROAD & PURGATORY ROAD

MIMIMUM NUMBER OF LANES & SHOULDERS TO REMAIN OPEN TO TRAFFIC		DAY OF WEEK							
Location	TIME OF DAY		Sunday	Monday	Tuesday	Wednesday	Thursday	Friday	Saturday
	From	To							
AQUID NECK AVE	0:00:00	6:00:00	ALL	1 L (alt)	1 L (alt)	1 L (alt)	1 L (alt)	1 L (alt)	ALL
	6:00:00	9:00:00	ALL	ALL	ALL	ALL	ALL	ALL	ALL
	9:00:00	15:00:00	ALL	1 L (alt)	1 L (alt)	1 L (alt)	1 L (alt)	1 L (alt)	ALL
	15:00:00	19:00:00	ALL	ALL	ALL	ALL	ALL	ALL	ALL
	19:00:00	24:00:00	1 L (alt)	1 L (alt)	1 L (alt)	1 L (alt)	1 L (alt)	1 L (alt)	ALL
PURGATORY ROAD	0:00:00	6:00:00	ALL	DET	DET	DET	DET	DET	ALL
	6:00:00	9:00:00	ALL	ALL	ALL	ALL	ALL	ALL	ALL
	9:00:00	15:00:00	ALL	1 L (alt)	1 L (alt)	1 L (alt)	1 L (alt)	1 L (alt)	ALL
	15:00:00	21:00:00	ALL	ALL	ALL	ALL	ALL	ALL	ALL
	21:00:00	24:00:00	DET	DET	DET	DET	DET	DET	ALL
CRESCENT ROAD	0:00:00	6:00:00	ALL	DET	DET	DET	DET	DET	ALL
	6:00:00	9:00:00	ALL	ALL	ALL	ALL	ALL	ALL	ALL
	9:00:00	15:00:00	ALL	1 L (alt)	1 L (alt)	1 L (alt)	1 L (alt)	1 L (alt)	ALL
	15:00:00	19:00:00	ALL	ALL	ALL	ALL	ALL	ALL	ALL
	19:00:00	24:00:00	DET	DET	DET	DET	DET	DET	ALL

LEGEND:

ALL All travel lanes and shoulders shall remain open to traffic

1 L (alt) A minimum of one travel lane in each direction shall remain open to traffic

DET A full closure with signed detour is allowed - emergency response vehicles must be allowed access as needed

Notes

- The set-up and break-down of temporary traffic control devices within a traveled way shall be construed as a closure of that traveled way.
- The provisions noted herein shall not free the Contractor from his responsibility to conduct all work in such a manner that assures the least possible obstruction to traffic.
- Access to and egress from all side streets, driveways, buildings and other pedestrian pathways intersection the Project work zones shall be maintained at all times unless otherwise shown on the plans.
- Traffic cannot be impacted Memorial Day to Labor Day weekend