

October 13, 2017

STATE OF RHODE ISLAND AND PROVIDENCE PLANTATION
DEPARTMENT OF ADMINISTRATION

DIVISION OF PURCHASES BID NO. 7565510

RHODE ISLAND DEPARTMENT OF TRANSPORTATION

RHODE ISLAND CONTRACT NO.2017-CH-057

FEDERAL-AID PROJECT NO. FAP Nos: STPG-HSIP(040)

Safety Improvements – Newport, Warwick, Johnston

300' North of Wellington Ave. to Chastellux Ave.
Main St. (Rte. 113) at Jefferson Blvd. Intersection
Warwick Ave. at Sandy Ln. Intersection
I-295 SB at Rte. 6 to 1 Mile South of Interchange

CITY/TOWN OF Johnston, Newport, Warwick
COUNTY OF PROVIDENCE, NEWPORT, KENT

NOTICE TO PROSPECTIVE BIDDERS

ADDENDUM NO. 1 Prospective bidders and all concerned are hereby notified of the following changes in the Plans, Specifications, Proposal and Distribution of Quantities for this contract. These changes shall be incorporated in the Plans, Specifications, Proposal and Distribution of Quantities, and shall become an integral part of the Contract Documents.

A. Other Item Changes

1. 201.0423 - REMOVE AND DISPOSE HANDHOLE
Quest Item added.Quantity Updated To "1.00".
2. 702.0540 - GRANITE INLET STONE 5 FOOT STANDARD 7.3.5
Quest Item added.Quantity Updated To "1.00".
3. T05.0100 - PRECAST TYPE A HANDHOLE STANDARD 18.2.0
Quest Item added.Quantity Updated To "1.00".
4. T05.1030 - ADJUST HANDHOLE TO GRADE
Quantity Updated To "7.00".
5. T06.1020 - 2 IN. RIGID STEEL CONDUIT - UNDERGROUND
Quest Item added.Quantity Updated To "80.00".
6. T04.5303 - 14 AWG 3 CONDUCTOR CABLE
Quantity Updated To "2250.00".

7. T04.5305 - 14 AWG 5 CONDUCTOR CABLE
Quantity Updated To "2290.00".
8. T06.5120 - 2 INCH SCHEDULE 40 POLYVINYL CHLORIDE PLASTIC CONDUIT -
UNDERGROUND
Quantity Updated To "235.00".
9. 402.9901 - FRICTION COURSE
Quantity Updated To "350.00".

B. Contract Documents

1. Specifications - Job Specific
 - a. Page JS-i
Delete Page JS-i in its entirety and insert the revised Page JS-i (R-1) attached to this Addendum No. 1.
 - b. Page JS-30
Delete Page JS-30 in its entirety and insert the revised Page JS-30 (R-1) attached to this Addendum No.1.

C. Distribution of Quantities

1. Page Index 1 thru 3
Delete Page Index 1 thru 3 in their entirety and insert the revised Page Index 1 thru 3 (R-1) attached to this Addendum No.1.
2. Page 6
Delete Page 6 in its entirety and insert the revised Page 6 (R-1) attached to this Addendum No.1. The Only items revised on this page are as follows:
 - Item No. 023, Item Code 402.9901 Friction Course
3. Page 20
Delete Page 20 in its entirety and insert the revised Page 20 (R-1) attached to this Addendum No.1. The Only items revised on this page are as follows:
 - Item No. 076, Item Code T04.5303 14 AWG 3 Conductor Cable
 - Item No. 077, Item Code T04.5305 14 AWG 5 Conductor Cable
 - Item No. 080, Item Code T05.1030 Adjust Handhole to Grade

4. Page 21

Delete Page 21 in its entirety and insert the revised Page 21 (R-1) attached to this Addendum No.1. The Only items revised on this page are as follows:

- Item No. 081, Item Code T06.5120 2 Inch Schedule 40 Polyvinyl Chloride Plastic Conduit - Underground

5. Page 26

Delete Page 26 in its entirety and insert the revised Page 26 (R-1) attached to this Addendum No.1. The Only items revised/added on this page are as follows:

- Item No. 102, Item Code 201.0423 Remove and Dispose Handhole

- Item No. 103, Item Code 702.0540 Granite Inlet Stone 5 Foot Standard 7.3.5

- Item No. 104, Item Code T05.0100 Precast Type A Handhole Standard 18.2.0

6. Page 27

Insert Page 27 (R-1) in its entirety attached to this Addendum No.1. The Only item revised/added on this page are as follows:

- Item No. 105, Item Code T06.1020 2 Inch Rigid Steel Conduit - Underground

D. Drawings/Plans - Change/Addition

1. Sheet 5 - Job Specific Plan, Symbols, Legend & Notes

Delete Sheet 5 in its entirety and insert the revised Sheet 5 (R-1) attached to this Addendum No.1.

2. Sheet 7 - General Plan 1 (Location 1)

Delete Sheet 7 in its entirety and insert the revised Sheet 7 (R-1) attached to this Addendum No.1.

3. Sheet 8 - General Plan 2 (Location 2)

Delete Sheet 8 in its entirety and insert the revised Sheet 8 (R-1) attached to this Addendum No.1.

4. Sheet 9 - General Plan 3 (Location 3)

Delete Sheet 9 in its entirety and insert the revised Sheet 9 (R-1) attached to this Addendum No.1.

5. Sheet 11 - General Plan 5 (Location 3)

Delete Sheet 11 in its entirety and insert the revised Sheet 11 (R-1) attached to this Addendum No.1.

6. Sheet 12 - General Plan 6 (Location 4)

Delete Sheet 12 in its entirety and insert the revised Sheet 12 (R-1) attached to this Addendum No.1.

INDEX**SPECIFICATIONS – JOB SPECIFIC**

<u>CODE</u>	<u>TITLE</u>	<u>PAGE</u>
108	Prosecution and Progress 108.01 Subletting of Contract 108.03 Prosecution and Progress 108.08 Failure to Complete On Time	JS-1
109	Measurement and Payment 109.04 Differing Site Conditions, Changes, Extra Work and Force Account Work 109.06 Partial Payments 109.07 Partial Payment of Lump Sum Items 109.09 Payment for Work	JS-3
201.0626	Remove and Salvage Traffic Signal Equipment	JS-10
209.9901	Inlet Sediment Control Device	JS-12
212.2000	Cleaning and Maintenance of Erosion Controls	JS-13
402.9901	Friction Course	JS-14
920.9901	Dumped Stone Riprap	JS-18
928.0800	Truck Mounted Attenuator with Truck Mounted Flashing Arrow Board	JS-19
937.0200	Maintenance and Movement Traffic Protection	JS-22
938.1000	Price Adjustments	JS-23
943.0200	On-The-Job Training	JS-24
L02.1000	Seeding	JS-25
L06.9901	Shredded Pine Bark Mulch	JS-26
T14.9901	1-Way Pedestal Mounted L.E.D. Pedestrian Signal Head with Countdown Timer, 12-Inch	JS-27
T15.9901	Red Signal Ahead LED Warning Sign	JS-30

CODE T15.9901**RED SIGNAL AHEAD LED WARNING SIGN**

DESCRIPTION: This work shall consist of furnishing and installing the components of a fully integrated LED Warning Sign including a 48 inch sign panel and housing with LED lettering, sign post and foundation, associated wiring (communications and power) and integration with the traffic signal controller for activation in accordance with the plans and details. The sign and its components shall also be compliant with the requirements of the Manual on Uniform Traffic Control Devices (MUTCD) 2009 Edition including all revisions. The sign shall have continuously illuminated "SIGNAL AHEAD" LED lettering (black), with "RED" LED lettering (red) externally activated by the signal controller.

MATERIALS: Sign face plate and reflective sheeting shall conform to the applicable requirements of SECTION M.16; SIGNS AND SIGN SUPPORTS. The sign mounting shall conform to the Plans and Standard Details. The sign face plate shall be a 48-inch square flat aluminum panel. The LED illumination and sign background (Engineer Grade) reflective (yellow) sheeting shall be in compliance with MUTCD Sections 2A.07 and 2A.08. The front face shall have a transparent matte/clear polycarbonate for protection. The text shall be 8-inch series D lettering. The waterproof aluminum enclosure shall be black and meet NEMA requirements for type 4 enclosures. A low voltage relay and cable shall be provided for communications to controller. Separate power to the sign shall be provided as indicated on the plans.

CONSTRUCTION METHODS: "RED SIGNAL AHEAD LED WARNING SIGN" shall be installed in accordance with the manufacturer's recommendations and as defined in the plans and details. The sign shall be mounted securely to the sign post in accordance with manufacturer's installation procedures. The sign shall be adjusted as necessary so that the face of the sign is perpendicular to the direction of traffic. The mounting shall hold the sign rigidly in place and resist movement in all directions. The low voltage communications cable shall run in existing conduit containing 40-2 IMSA Communications cable. Any cleaning and snaking of existing handholes and conduit are included in the cable installation.

METHOD OF MEASUREMENT: "RED SIGNAL AHEAD LED WARNING SIGN" will be measured for payment by the number of units, per each, actually installed in accordance with the Plans and/or as directed by the Engineer.

BASIS OF PAYMENT: "RED SIGNAL AHEAD LED WARNING SIGN" will be paid for at the contract bid price "EACH" as listed in the proposal. The price so-stated shall constitute full compensation for furnishing all labor, materials, mounting brackets, attachment hardware, signs, sign post and foundation, wiring, field adjustments and settings, customizations, testing, required controller modifications, and all other incidentals complete, in place, and accepted by the Engineer.

Table of Contents - Distribution of Quantities

Project Name - Safety Improvements - Newport, Warwick, Johnston
 Estimate Name - Addendum No. 1
 R.I. Contract No. - 2017-CH-057
 FAP Nos: STPG-HSIP(040)

ItemCode	Description	Page
201.0401	REMOVE AND DISPOSE GRANITE CURB	1
201.0402	REMOVE AND DISPOSE CONCRETE CURB	1
201.0403	REMOVE AND DISPOSE SIDEWALKS	1
201.0406	REMOVE AND DISPOSE HIGHWAY BOUNDS	1
201.0409	REMOVE AND DISPOSE FLEXIBLE PAVEMENT	1
201.0415	REMOVE AND DISPOSE GUARDRAIL AND POST ALL TYPES	1
201.0601	REMOVE AND DISPOSE GROUND MOUNTED SIGNS	2
201.0604	REMOVE AND DISPOSE GROUND MOUNTED SIGN POSTS	2
201.0605	REMOVE AND DISPOSE GROUND MOUNTED SIGN BASES	2
201.0610	REMOVE AND DISPOSE DIRECTIONAL, WARNING, REGULATORY, SERVICE, AND STREET SIGNS	2
201.0611	REMOVE AND STOCKPILE OVERHEAD SIGN STRUCTURE	3
201.0612	REMOVE AND STOCKPILE OVERHEAD SIGN PANEL	3
201.0626	REMOVE AND SALVAGE TRAFFIC SIGNAL EQUIPMENT	3
202.0100	EARTH EXCAVATION	3
204.0100	TRIMMING AND FINE GRADING	4
209.9901	INLET SEDIMENTATION CONTROL DEVICE	4
212.2000	CLEANING AND MAINTENANCE OF EROSION CONTROLS	4
213.0100	PLACEMENT OF MILLINGS BENEATH GUARDRAIL	4
301.0200	GRAVEL BORROW BASE COURSE	5
301.0300	CRUSHED STONE OR CRUSHED GRAVEL BASE MODIFIED	5
401.2200	CLASS 12.5 HMA WITH WMA	5
401.3100	MODIFIED CLASS 9.5 HMA	5
402.9901	FRICITION COURSE	6
403.0300	ASPHALT EMULSION TACK COAT	6
707.0900	ADJUST MANHOLES TO GRADE	6
707.0950	ADJUST TELEPHONE MANHOLE TO GRADE	6
707.1000	ADJUST SANITARY MANHOLE	6
707.1100	ADJUST CATCH BASINS	7
713.8269	ADJUST WATER GATE BOXES TO GRADE	7
713.8300	ADJUST GAS GATE BOXES TO GRADE	7
901.0101	GUARDRAIL STEEL BEAM SINGLE FACE EARTH AND ASPHALT	7
901.0151	TERMINAL END SECTION SINGLE FACE STANDARD 34.3.2	8
901.0191	GUARDRAIL STEEL BEAM ANCHORAGE TRAILING END SECTION STANDARD 34.3.4	8
901.0199	GUARDRAIL END TREATMENT, ENERGY ABSORBING TERMINAL	8
902.0100	STEEL BACKED TIMBER GUARDRAIL STANDARD 34.4.0	8
902.0210	STEEL BACKED TIMBER GUARDRAIL TERMINAL SECTION TYPE 2 STANDARD 34.4.2	8
905.0110	PORTLAND CEMENT SIDEWALK MONOLITHIC STANDARD 43.1.0	9
906.0110	GRANITE CURB, QUARRY SPLIT STRAIGHT, STANDARD 7.3.0	9
906.0111	GRANITE CURB, QUARRY SPLIT CIRCULAR, STANDARD 7.3.0	9
906.0119	3' GRANITE TRANSITION CURB STANDARD 7.3.1	9
906.0120	GRANITE WHEELCHAIR RAMP CURB STANDARDS 7.3.3, 43.3.0 AND 43.3.1	10
906.0130	GRANITE RAMP STONE STRAIGHT STANDARD 7.3.9	10
906.0131	GRANITE RAMP STONE CIRCULAR STANDARD 7.3.9	10
906.0210	CEMENT CONCRETE CURB PRECAST STRAIGHT STANDARD 7.1.0	11
906.0211	CEMENT CONCRETE CURB PRECAST CIRCULAR STANDARD 7.1.0	11
906.0250	PRECAST CONCRETE WHEELCHAIR RAMP CURB STANDARDS 7.1.3, 43.3.0 AND 43.3.1	11
906.0262	PRECAST CONCRETE RAMP STONE 18-INCH STRAIGHT STANDARD 7.1.9	11

Table of Contents - Distribution of Quantities

Project Name - Safety Improvements - Newport, Warwick, Johnston
 Estimate Name - Addendum No. 1
 R.I. Contract No. - 2017-CH-057
 FAP Nos: STPG-HSIP(040)

ItemCode	Description	Page
906.0263	PRECAST CONCRETE RAMP STONE 18-INCH CIRCULAR STANDARD 7.1.9	11
906.0270	PRECAST CONCRETE TRANSITION CURB STANDARD 7.2.2	12
906.0700	REMOVE, HANDLE, HAUL TRIM RESET CURB EDGING, STRAIGHT, CIRCULAR ALL TYPES	12
907.0100	WATER FOR DUST CONTROL	12
914.5010	FLAGPERSONS	12
914.5020	FLAGPERSONS - OVERTIME	13
920.0070	DUMPED STONE RIPRAP R-3, R-4, 4-5 STANDARD 8.3.0	13
922.0100	TEMPORARY CONSTRUCTION SIGNS STANDARD 29.1.0 AND 27.1.1	13
923.0105	DRUM BARRICADE STANDARD 26.2.0	14
923.0200	FLUORESCENT TRAFFIC CONES STANDARD 26.1.0	14
924.0113	ADVANCE WARNING ARROW PANEL	15
925.0112	PORTABLE CHANGEABLE MESSAGE SIGN	15
928.0800	TRUCK MOUNTED ATTENUATOR WITH TRUCK MOUNTED FLASHING ARROW BOARD	15
931.0110	CLEANING AND SWEEPING PAVEMENT	16
932.0100	CUTTING AND MATCHING ASPHALT	16
932.0200	FULL-DEPTH SAWCUT OF BITUMINOUS PAVEMENT	16
932.0230	FULL DEPTH SAWCUT OF PORTLAND CEMENT CONCRETE SIDEWALK/DRIVEWAY	17
935.0400	REMOVING BITUMINOUS PAVEMENT BY MICRO MILLING	17
936.0110	MOBILIZATION	17
937.0200	MAINTENANCE AND MOVEMENT TRAFFIC PROTECTION	17
942.0200	DETECTABLE WARNING PANEL STANDARD 48.1.0	18
943.0200	TRAINEE MAN-HOURS	18
L01.0102	LOAM BORROW 4 INCHES DEEP	18
L02.0101	GENERAL HIGHWAY SEEDING (TYPE 1)	18
L02.0102	RESIDENTIAL SEEDING (TYPE 2)	19
L05.0506	JUTE MESH	19
L06.9901	SHREDDED PINE BARK MULCH	19
L11.0102	TREE PLANT PROTECTION DEVICE STANDARD 51.1.0	19
T04.5303	14 AWG 3 CONDUCTOR CABLE	19
T04.5305	14 AWG 5 CONDUCTOR CABLE	20
T04.7500	SPLICE KIT	20
T05.0400	BREAK INTO EXISTING HANDHOLE	20
T05.1030	ADJUST HANDHOLE TO GRADE	20
T06.5120	2 INCH SCHEDULE 40 POLYVINYL CHLORIDE PLASTIC CONDUIT - UNDERGROUND	21
T11.2008	TRAFFIC SIGNAL STANDARD, 8 FOOT, STD 19.4.0 ALUMINUM PEDESTAL POLE AND FOUNDATION	21
T13.1000	TRAFFIC DETECTORS-LOOP, STANDARD 19.6.0	21
T13.8210	ACCESSIBLE PEDESTRIAN DETECTOR - PUSHBUTTON WITH SIGN	21
T14.9901	1-WAY PEDESTAL MOUNTED L.E.D. PEDESTRIAN SIGNAL HEAD WITH COUNTDOWN TIMER, 12-INCH	22
T15.0100	DIRECTIONAL REGULATORY AND WARNING SIGNS	22
T15.9901	RED SIGNAL AHEAD SIGN - L.E.D.	22
T16.9901	REMOVE AND RELOCATE GROUND MOUNTED SIGN	22
T17.0100	OVERHEAD SIGN PANELS	22
T17.9901	OVERHEAD SIGN STRUCTURE 76-80 FOOT SPAN - STEEL	23
T20.1000	REMOVE EXISTING PAVEMENT MARKINGS	23
T20.1106	6 INCH TEMPORARY WATERBORNE PAINT PAVEMENT MARKINGS WHITE	23
T20.1112	12 INCH TEMPORARY WATERBORNE PAINT PAVEMENT MARKINGS WHITE	24
T20.1204	4 INCH TEMPORARY WATERBORNE PAINT PAVEMENT MARKINGS YELLOW	24

Table of Contents - Distribution of Quantities

Project Name - Safety Improvements - Newport, Warwick, Johnston
 Estimate Name - Addendum No. 1
 R.I. Contract No. - 2017-CH-057
 FAP Nos: STPG-HSIP(040)

ItemCode	Description	Page
T20.2006	6 INCH EPOXY RESIN PAVEMENT MARKINGS WHITE	24
T20.2012	12 INCH EPOXY RESIN PAVEMENT MARKINGS WHITE	24
T20.2014	4 INCH EPOXY RESIN PAVEMENT MARKINGS YELLOW	25
T20.2020	EPOXY RESIN PAVEMENT ARROW - STRAIGHT, LEFT, RIGHT, OR COMBINED STANDARD 20.1.0	25
T20.2022	EPOXY RESIN PAVEMENT MARKING WORD "ONLY" STANDARD 20.1.0	25
T20.2042	EPOXY RESIN PAVEMENT MARKING - YIELD LINE SYMBOL	26
T20.2044	EPOXY RESIN PAVEMENT MARKING - HELMETED BICYCLIST SYMBOL WITH ARROW	26
201.0423	REMOVE AND DISPOSE HANDHOLE	26
702.0540	GRANITE INLET STONE 5 FOOT STANDARD 7.3.5	26
T05.0100	PRECAST TYPE A HANDHOLE STANDARD 18.2.0	26
T06.1020	2 IN. RIGID STEEL CONDUIT - UNDERGROUND	27

Distribution of Quantities

Project Name - Safety Improvements - Newport, Warwick, Johnston
 Estimate Name - Addendum No. 1
 R.I. Contract No. - 2017-CH-057
 FAP Nos: STPG-HSIP(040)

Item No.	Item Code	Description	UM	Qty.	Pay Code	Seq. No.
023	402.9901	FRICITION COURSE	TON			
		I-295 SB SERVICE ROAD AT ROUTE 6 INTERCHANGE				
		GEN. PLAN		350.00	0021	01
				Item 402.9901 Total:		350.00
024	403.0300	ASPHALT EMULSION TACK COAT	SY			
		HALIDON AVE. AT WELLINGTON AVE.				
		GEN. PLAN		10.00	0021	01
		I-295 SB SERVICE ROAD AT ROUTE 6 INTERCHANGE				
		GEN. PLAN		3,570.00	0021	01
		MAIN ST. AT JEFFERSON BLVD.				
		GEN. PLAN		1,620.00	0021	01
		WARWICK AVE. AT SANDY LN.				
		GEN. PLAN		930.00	0021	01
				Item 403.0300 Total:		6,130.00
025	707.0900	ADJUST MANHOLES TO GRADE	EACH			
		MAIN ST. AT JEFFERSON BLVD.				
		GEN. PLAN		1.00	0021	01
				Item 707.0900 Total:		1.00
026	707.0950	ADJUST TELEPHONE MANHOLE TO GRADE	EACH			
		MAIN ST. AT JEFFERSON BLVD.				
		GEN. PLAN		1.00	0021	01
		WARWICK AVE. AT SANDY LN.				
		GEN. PLAN		1.00	0021	01
				Item 707.0950 Total:		2.00
027	707.1000	ADJUST SANITARY MANHOLE	EACH			
		MAIN ST. AT JEFFERSON BLVD.				
		GEN. PLAN		1.00	0021	01

Distribution of Quantities

Project Name - Safety Improvements - Newport, Warwick, Johnston
 Estimate Name - Addendum No. 1
 R.I. Contract No. - 2017-CH-057
 FAP Nos: STPG-HSIP(040)

Item No.	Item Code	Description	UM	Qty.	Pay Code	Seq. No.
076	T04.5303 Cont.	MAIN ST. AT JEFFERSON BLVD.				
		GEN. PLAN		1,210.00	0021	01
		WARWICK AVE. AT SANDY LN.				
		GEN. PLAN		1,040.00	0021	01
Item T04.5303 Total:				2,250.00		
077	T04.5305	14 AWG 5 CONDUCTOR CABLE	LF			
		MAIN ST. AT JEFFERSON BLVD.				
		GEN. PLAN		1,230.00	0021	01
		WARWICK AVE. AT SANDY LN.				
		GEN. PLAN		1,060.00	0021	01
Item T04.5305 Total:				2,290.00		
078	T04.7500	SPLICE KIT	EACH			
		MAIN ST. AT JEFFERSON BLVD.				
		GEN. PLAN		7.00	0021	01
		WARWICK AVE. AT SANDY LN.				
		GEN. PLAN		8.00	0021	01
Item T04.7500 Total:				15.00		
079	T05.0400	BREAK INTO EXISTING HANDHOLE	EACH			
		MAIN ST. AT JEFFERSON BLVD.				
		GEN. PLAN		6.00	0021	01
		WARWICK AVE. AT SANDY LN.				
		GEN. PLAN		5.00	0021	01
Item T05.0400 Total:				11.00		
080	T05.1030	ADJUST HANDHOLE TO GRADE	EACH			
		MAIN ST. AT JEFFERSON BLVD.				
		GEN. PLAN		5.00	0021	01
		WARWICK AVE. AT SANDY LN.				
		GEN. PLAN		2.00	0021	01
Item T05.1030 Total:				7.00		

Distribution of Quantities

Project Name - Safety Improvements - Newport, Warwick, Johnston
 Estimate Name - Addendum No. 1
 R.I. Contract No. - 2017-CH-057
 FAP Nos: STPG-HSIP(040)

Item No.	Item Code	Description	UM	Qty.	Pay Code	Seq. No.
081	T06.5120	2 INCH SCHEDULE 40 POLYVINYL CHLORIDE PLASTIC CONDUIT - UNDERGROUND	LF			
		MAIN ST. AT JEFFERSON BLVD.				
		GEN. PLAN		100.00	0021	01
		WARWICK AVE. AT SANDY LN.				
		GEN. PLAN		135.00	0021	01
				Item T06.5120 Total:		235.00
082	T11.2008	TRAFFIC SIGNAL STANDARD,8 FOOT,STD 19.4.0 ALUMINUM PEDESTAL POLE AND FOUNDATION	EACH			
		MAIN ST. AT JEFFERSON BLVD.				
		GEN. PLAN		6.00	0021	01
		WARWICK AVE. AT SANDY LN.				
		GEN. PLAN		8.00	0021	01
				Item T11.2008 Total:		14.00
083	T13.1000	TRAFFIC DETECTORS-LOOP, STANDARD 19.6.0	LF			
		MAIN ST. AT JEFFERSON BLVD.				
		GEN. PLAN		800.00	0021	01
		WARWICK AVE. AT SANDY LN.				
		GEN. PLAN		1,100.00	0021	01
				Item T13.1000 Total:		1,900.00
084	T13.8210	ACCESSIBLE PEDESTRIAN DETECTOR - PUSHBUTTON WITH SIGN	EACH			
		MAIN ST. AT JEFFERSON BLVD.				
		GEN. PLAN		6.00	0021	01
		WARWICK AVE. AT SANDY LN.				
		GEN. PLAN		8.00	0021	01
				Item T13.8210 Total:		14.00

Distribution of Quantities

Project Name - Safety Improvements - Newport, Warwick, Johnston
 Estimate Name - Addendum No. 1
 R.I. Contract No. - 2017-CH-057
 FAP Nos: STPG-HSIP(040)

Item No.	Item Code	Description	UM	Qty.	Pay Code	Seq. No.
100	T20.2042	EPOXY RESIN PAVEMENT MARKING - YIELD LINE SYMBOL MAIN ST. AT JEFFERSON BLVD. GEN. PLAN	EACH	3.00	0021	01
		WARWICK AVE. AT SANDY LN. GEN. PLAN		4.00	0021	01
Item T20.2042 Total:				7.00		
101	T20.2044	EPOXY RESIN PAVEMENT MARKING - HELMETED BICYCLIST SYMBOL WITH ARROW HALIDON AVE. AT WELLINGTON AVE. BICYCLE LANE MARKING	EACH	7.00	0021	01
		SHARED LANE MARKING		5.00	0021	01
Item T20.2044 Total:				12.00		
102	201.0423	REMOVE AND DISPOSE HANDHOLE WARWICK AVE. AT SANDY LN. GEN. PLAN	EACH	1.00	0021	01
Item 201.0423 Total:				1.00		
103	702.0540	GRANITE INLET STONE 5 FOOT STANDARD 7.3.5 WARWICK AVE. AT SANDY LN. GEN. PLAN	EACH	1.00	0021	01
Item 702.0540 Total:				1.00		
104	T05.0100	PRECAST TYPE A HANDHOLE STANDARD 18.2.0 WARWICK AVE. AT SANDY LN. GEN. PLAN	EACH	1.00	0021	01
Item T05.0100 Total:				1.00		

Distribution of Quantities

Project Name - Safety Improvements - Newport, Warwick, Johnston

Estimate Name - Addendum No. 1

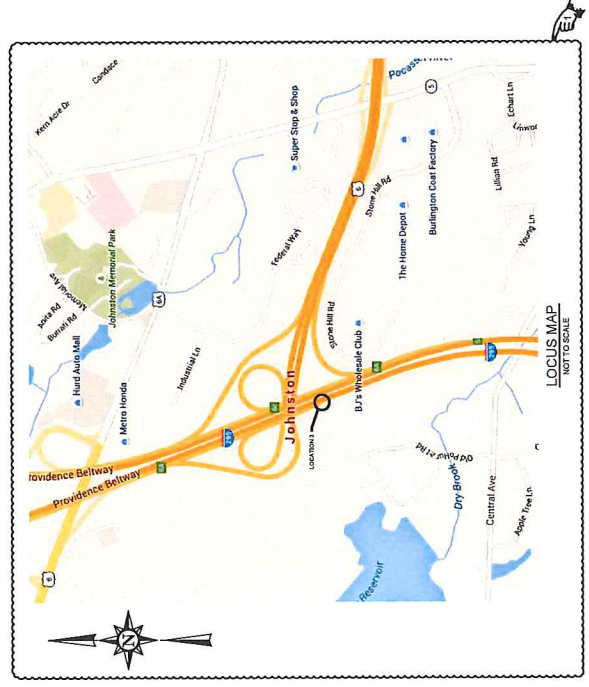
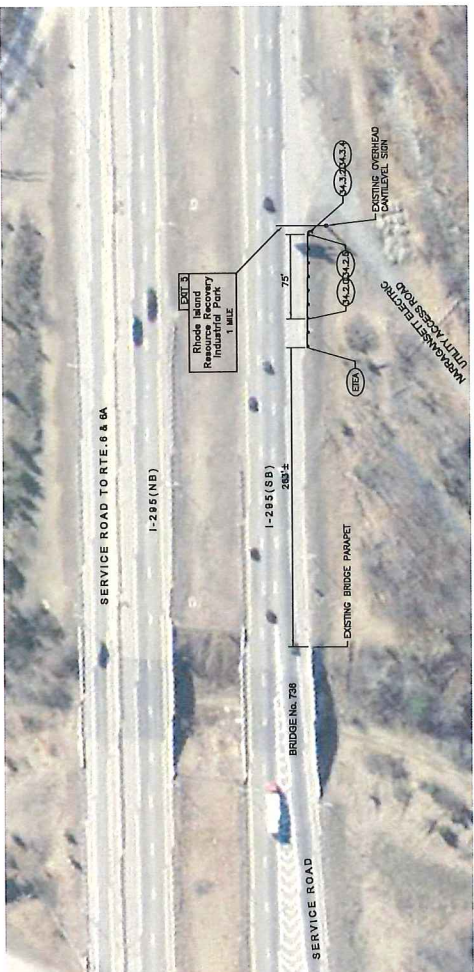
R.I. Contract No. - 2017-CH-057

FAP Nos: STPG-HSIP(040)

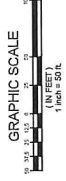
Item No.	Item Code	Description	UM	Qty.	Pay Code	Seq. No.
105	T06.1020	2 IN. RIGID STEEL CONDUIT -	LF			
		UNDERGROUND				
		MAIN ST. AT JEFFERSON BLVD.				
		GEN. PLAN		60.00	0021	01
		WARWICK AVE. AT SANDY LN.				
		GEN. PLAN		20.00	0021	01
Item T06.1020 Total:				80.00		

NO. 1	DATE	BY	REVISIONS
1	11/11/20	SRP/MS/AM	2017

R-1



RHODE ISLAND	
DEPARTMENT OF TRANSPORTATION	
SAFETY IMPROVEMENTS	
NEWPORT, WARWICK & JOHNSTON RHODE ISLAND	
GENERAL PLAN - 5	
LOCATION 3	
INTERSTATE 295 SOUTH SIGN GUARDRAIL JOHNSTON, RHODE ISLAND	
CHECKED BY	DATE 10/22/17
SCALE AS SHOWN	

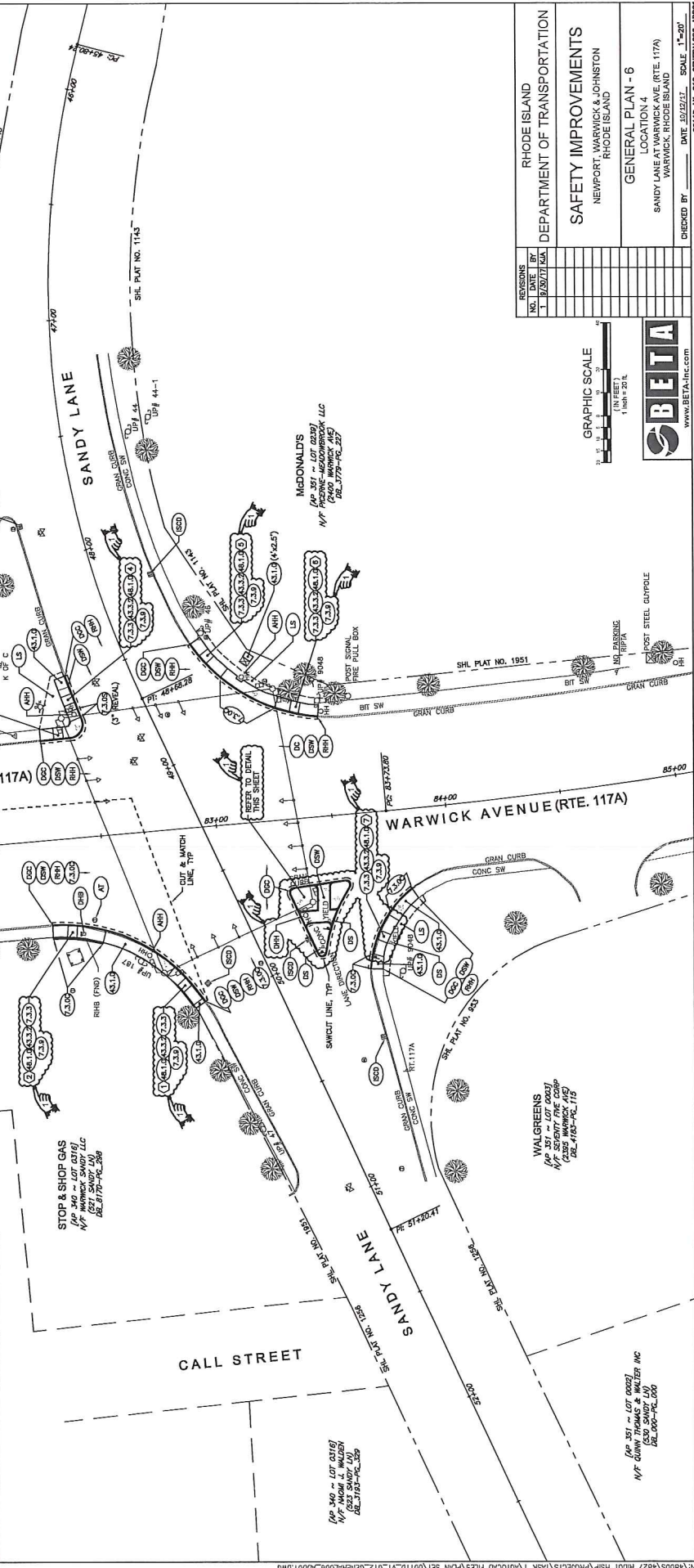
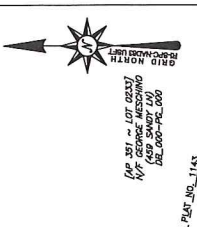


DOT10_01_GENERALLOC_0001

REV	DATE	BY	DESCRIPTION
1	09/10/17	GA	ISSUED FOR PERMITS
2	09/12/17	GA	ISSUED FOR PERMITS

DATE: 09/12/17
SCALE: 1"=50'

WARWICK AVENUE (RTE. 117A)
SANDY LANE
CALL STREET



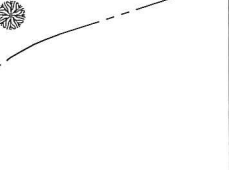
REVISIONS	NO.	DATE	BY
	1	09/10/17	GA
	2	09/12/17	GA

RHODE ISLAND
DEPARTMENT OF TRANSPORTATION
SAFETY IMPROVEMENTS
NEWPORT, WARWICK & JOHNSTON
RHODE ISLAND

GENERAL PLAN - 6
LOCATION 4
SANDY LANE AT WARWICK AVE. (RTE. 117A)
WARWICK, RHODE ISLAND

CHECKED BY: _____
DATE: 09/12/17
SCALE: 1"=50'

GRAPHIC SCALE
1 INCH = 50 FEET



NO.	DATE	BY	DESCRIPTION
1	01/13/2017	STP	ISSUED FOR PERMITS

DATE	BY	DESCRIPTION
01/13/2017	STP	ISSUED FOR PERMITS

DATE	BY	DESCRIPTION
01/13/2017	STP	ISSUED FOR PERMITS

DATE	BY	DESCRIPTION
01/13/2017	STP	ISSUED FOR PERMITS

DATE	BY	DESCRIPTION
01/13/2017	STP	ISSUED FOR PERMITS

DATE	BY	DESCRIPTION
01/13/2017	STP	ISSUED FOR PERMITS

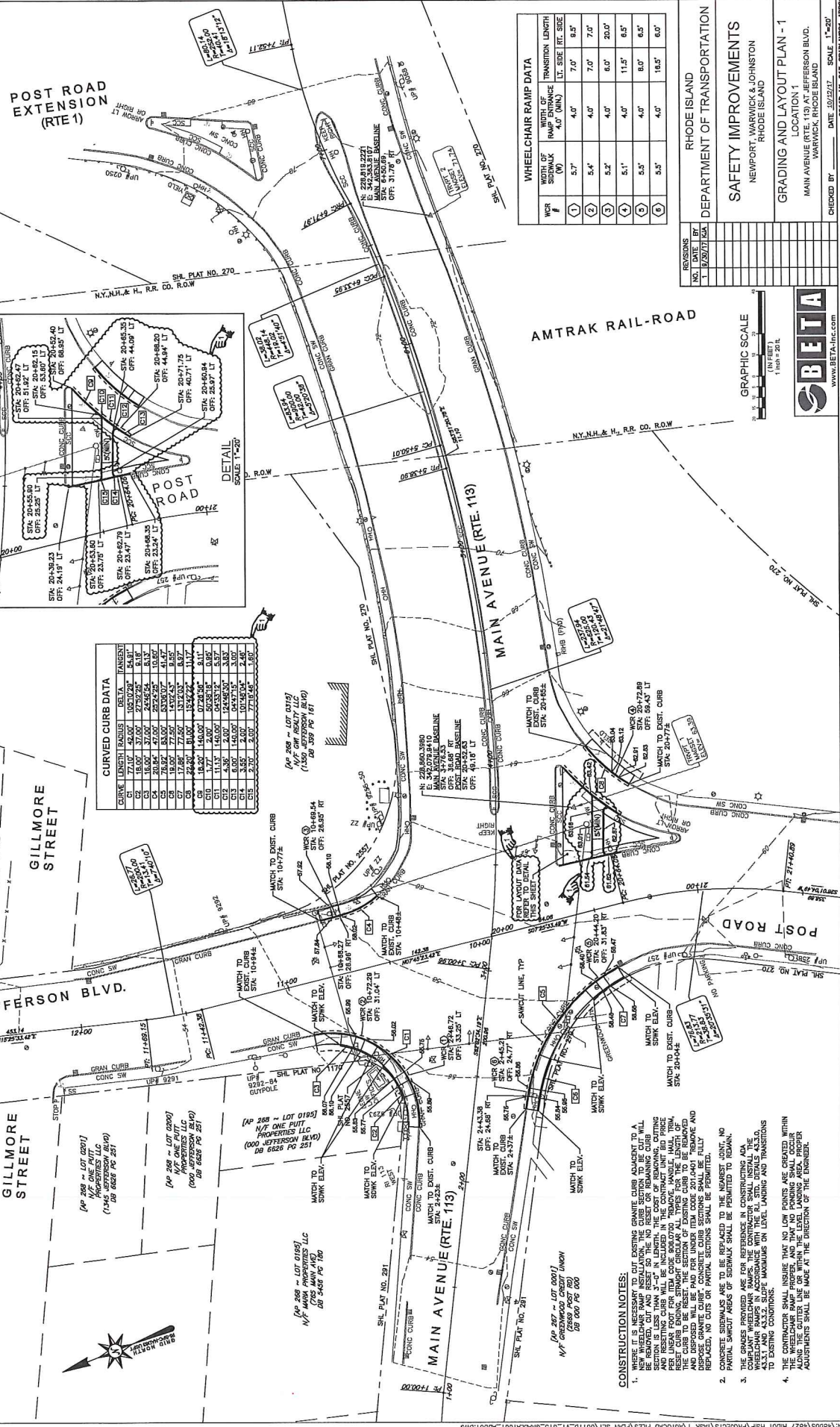
DATE	BY	DESCRIPTION
01/13/2017	STP	ISSUED FOR PERMITS

DATE	BY	DESCRIPTION
01/13/2017	STP	ISSUED FOR PERMITS

DATE	BY	DESCRIPTION
01/13/2017	STP	ISSUED FOR PERMITS

DATE	BY	DESCRIPTION
01/13/2017	STP	ISSUED FOR PERMITS

DATE	BY	DESCRIPTION
01/13/2017	STP	ISSUED FOR PERMITS



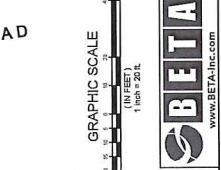
STATION	LENGTH	RADIUS	DELTA	TANGENT
C1	27.00	42.00	105.0000	24.81
C2	18.00	37.00	279.2925	8.18
C3	20.00	47.00	202.2525	10.67
C4	20.00	47.00	202.2525	10.67
C5	20.00	47.00	202.2525	10.67
C6	18.00	37.00	279.2925	8.18
C7	27.00	42.00	105.0000	24.81
C8	18.00	37.00	279.2925	8.18
C9	18.00	37.00	279.2925	8.18
C10	18.00	37.00	279.2925	8.18
C11	18.00	37.00	279.2925	8.18
C12	18.00	37.00	279.2925	8.18
C13	18.00	37.00	279.2925	8.18
C14	18.00	37.00	279.2925	8.18
C15	18.00	37.00	279.2925	8.18

WCR #	WIDTH OF SHOULDER (MIN)	WIDTH OF TRANSITION	LENGTH LT. SIDE	HT. SIDE
1	5.7'	4.0'	7.0'	8.5'
2	5.4'	4.0'	7.0'	7.0'
3	5.2'	4.0'	6.0'	20.0'
4	5.1'	4.0'	11.5'	8.5'
5	5.5'	4.0'	8.0'	6.5'
6	5.5'	4.0'	18.5'	6.0'

REVISIONS

NO.	DATE	BY	DESCRIPTION
1	01/13/2017	STP	ISSUED FOR PERMITS

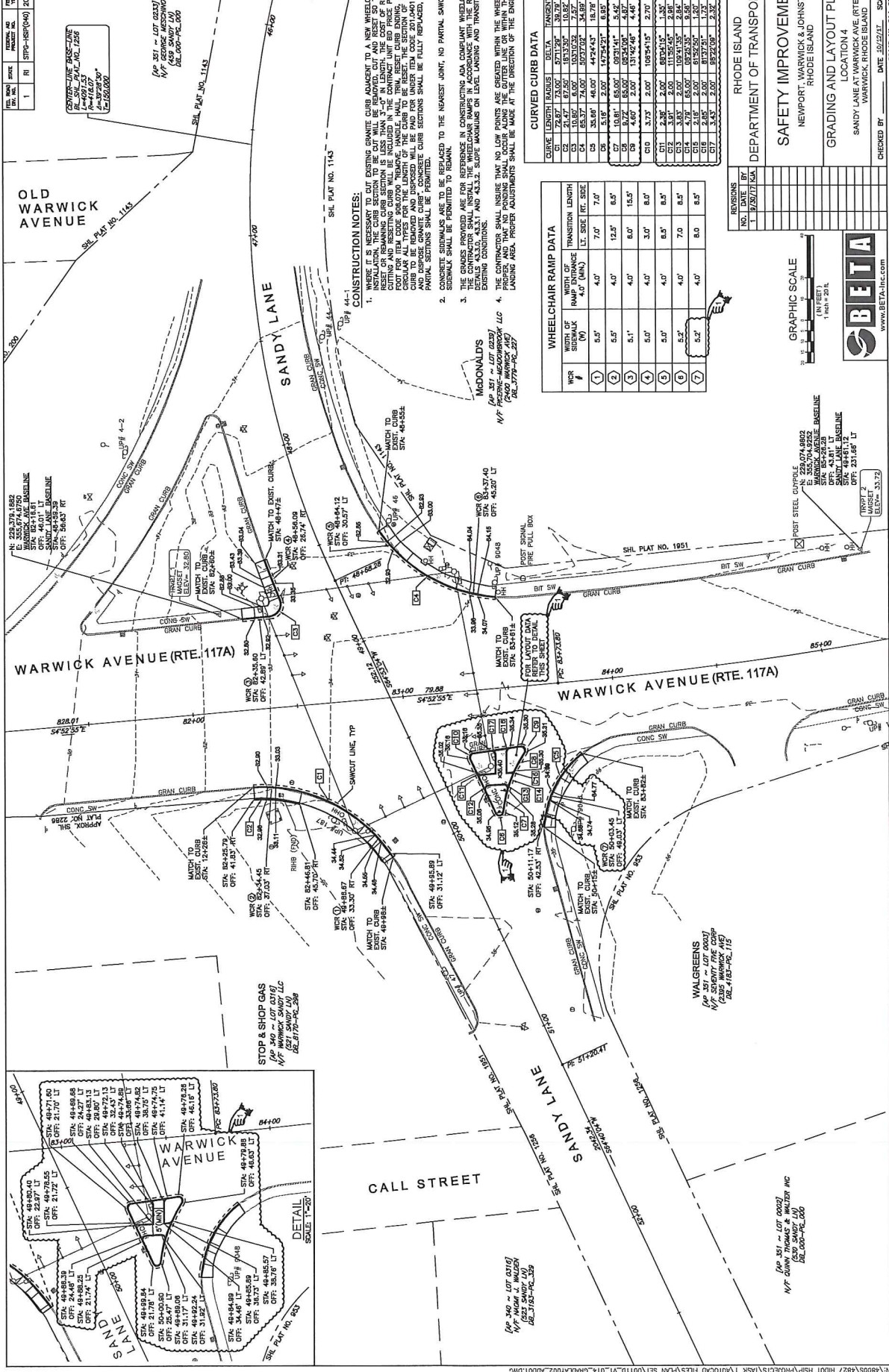
RHOODE ISLAND
 DEPARTMENT OF TRANSPORTATION
SAFETY IMPROVEMENTS
 NEWPORT, WARWICK & JOHNSTON
 RHOODE ISLAND
GRADING AND LAYOUT PLAN - 1
 LOCATION 1
 MAIN AVENUE (RTE. 113) AT JEFFERSON BLVD.
 WARWICK, RHOODE ISLAND
 CHECKED BY: _____ DATE: 01/13/2017 SCALE: 1"=50'
 DTD: 01_13_2017_0001A.DWG



CONSTRUCTION NOTES:

- WHERE IT IS NECESSARY TO CUT EXISTING GRANITE CURB ADJACENT TO A NEW WHEELCHAIR RAMP INSTALLATION, THE CURB SECTION TO BE CUT WILL BE LESS THAN 2'-0" IN LENGTH. THE COST OF REMOVING, CUTTING AND RESETTING CURB WILL BE INCLUDED IN THE CONTRACT UNIT BID PRICE AND SHALL BE PAID BY THE CONTRACTOR. ALL TYPES FOR THE LENGTH OF THE CURB TO BE RESET AND FOR THE WIDTH OF THE CURB TO BE REMOVED AND DISPOSED GRANITE CURB CONCRETE CURB SECTIONS SHALL BE FULLY REPLACED. NO CUTS OR PARTIAL SECTIONS SHALL BE PERMITTED.
- CONCRETE SIDEWALKS ARE TO BE REPLACED BY THE NEAREST OWNER. NO NEW SIDEWALKS ARE TO BE INSTALLED BY THE CONTRACTOR.
- THE CONTRACTOR SHALL BE RESPONSIBLE FOR OBTAINING ALL NECESSARY PERMITS AND COMPLIANT WHEELCHAIR MARKS. THE CONTRACTOR SHALL INSTALL THE WHEELCHAIR MARKS IN ACCORDANCE WITH THE RAMP AND TRANSITION TO EXISTING CONDITIONS.
- THE CONTRACTOR SHALL INSURE THAT NO LOW POINTS ARE CREATED WITHIN THE CURB OR WITHIN THE LEGS. THE CONTRACTOR SHALL BE RESPONSIBLE FOR ADJUSTING THE CURB OR WITHIN THE LEGS. THE CONTRACTOR SHALL BE RESPONSIBLE FOR ADJUSTMENTS SHALL BE MADE AT THE DIRECTION OF THE ENGINEER.

REV.	DATE	BY	DESCRIPTION
1	01/16/07
2	02/14/07
3	03/14/07
4	04/14/07
5	05/14/07



CONSTRUCTION NOTES:

- WHERE IT IS NECESSARY TO CUT EXISTING GRANITE CURB ADVANCE TO A NEW WHEELCHAIR RAMP INSTALL GRANITE CURB SECTION IS LESS THAN 3'-0" IN LENGTH, THE COST OF REMOVING, CUTTING AND RESETTING CURB WILL BE INCLUDED IN THE CONTRACT UNIT BID PRICE PER LINEAR FOOT. GRANITE CURB SHALL BE SET TO THE CENTERLINE OF THE ROADWAY. THE SECTION OF EXISTING CURB TO BE REMOVED AND REPOSED WILL BE PAID FOR UNDER ITEM CODE 300.000. REMOVAL OF GRANITE CURB SHALL BE PERMITTED.
- CONCRETE SIDEWALKS ARE TO BE REPLACED TO THE NEAREST JOINT, NO PARTIAL SWEAT AREAS OF SIDEWALK SHALL BE PERMITTED TO REMAIN.
- THE GRANITE PROVIDED ARE FOR REFERENCE IN CONSTRUCTING A COMPLIANT WHEELCHAIR RAMP. THE CONTRACTOR SHALL INSURE THAT NO LOW POINTS ARE CREATED WITHIN THE WHEELCHAIR RAMP. DETAILS 433.0, 433.1, AND 433.2. SLOPE MAINTAINS OR LEVEL LANDING AND TRANSITIONS TO EXISTING CONDITIONS.
- THE CONTRACTOR SHALL INSURE THAT NO LOW POINTS ARE CREATED WITHIN THE WHEELCHAIR RAMP. DETAILS 433.0, 433.1, AND 433.2. SLOPE MAINTAINS OR LEVEL LANDING AND TRANSITIONS TO EXISTING CONDITIONS.

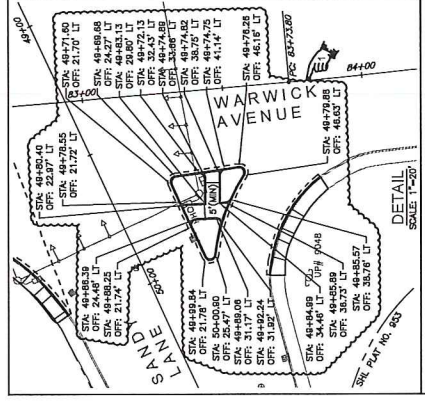
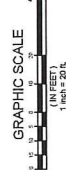
CURVED CURB DATA

CURVE	LENGTH	RADIUS	DELTA	TANGENT
C1	78.87	13.00	57.129	38.79
C2	10.86	6.00	103.032	7.87
C3	10.86	6.00	103.032	7.87
C4	68.37	74.00	59.709	34.89
C5	35.69	46.00	44.243	18.79
C6	51.8	2.00	175.291	6.99
C7	10.81	65.00	69.314	5.82
C8	4.65	2.00	63.466	4.48
C9	4.65	2.00	63.466	4.48
C10	37.9	2.00	108.843	2.70
C11	3.36	2.00	103.242	2.38
C12	3.36	2.00	103.242	2.38
C13	3.85	2.00	104.159	2.84
C14	4.78	65.00	69.232	3.98
C15	4.78	65.00	69.232	3.98
C16	2.85	2.00	61.929	1.73
C17	3.45	2.00	62.209	2.32

WHEELCHAIR RAMP DATA

WCR #	WCR SUBALPHA	RAMP DISTANCE	TRANSITION LENGTH	LT. SIDE	RT. SIDE
1	5.5'	4.0'	7.0'	7.0'	7.0'
2	5.5'	4.0'	12.5'	6.5'	6.5'
3	5.1'	4.0'	8.0'	15.5'	8.0'
4	5.0'	4.0'	3.0'	8.0'	8.0'
5	5.0'	4.0'	6.5'	8.5'	8.5'
6	5.2'	4.0'	7.0'	8.5'	8.5'
7	5.2'	4.0'	8.0'	8.0'	8.0'

RHODE ISLAND
DEPARTMENT OF TRANSPORTATION
SAFETY IMPROVEMENTS
NEWPORT, WARWICK & JOHNSTON
RHODE ISLAND
GRADING AND LAYOUT PLAN - 2
LOCATION 4
SANDY LANE AT WARWICK AVE. (RTE. 117A)
WARWICK, RHODE ISLAND
CHECKED BY: DATE: 02/12/07 SCALE: 1"=20'



STOP & SHOP GAS
(AP 340 - LOT 0318)
N/F WARWICK SHOP, LLC
DEL. 8170-PL-289

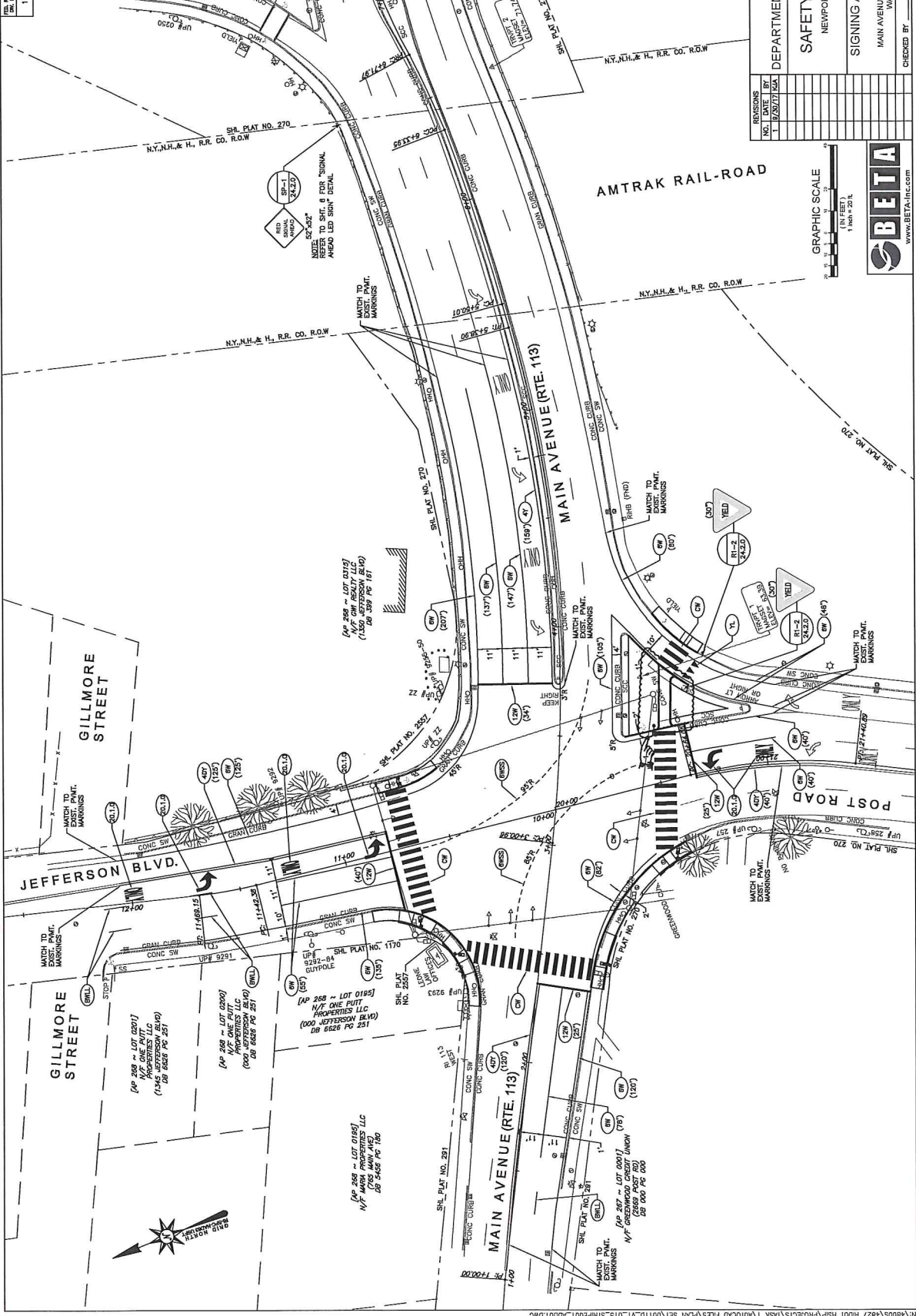
WILGREENS
(AP 351 - LOT 0007)
N/F SEVENTH FINE CORP
DEL. 418-PL-115

(AP 351 - LOT 0007)
N/F DANN THOMAS & WALTER INC
DEL. 408-PL-289

(AP 340 - LOT 0318)
N/F WARWICK SHOP, LLC
DEL. 8170-PL-289

REV. NO.	DATE	BY	DESCRIPTION
1	01/15/17	STP	ISSUE FOR PERMITS
2	02/01/17	STP	ISSUE FOR PERMITS
3	02/01/17	STP	ISSUE FOR PERMITS
4	02/01/17	STP	ISSUE FOR PERMITS
5	02/01/17	STP	ISSUE FOR PERMITS
6	02/01/17	STP	ISSUE FOR PERMITS
7	02/01/17	STP	ISSUE FOR PERMITS
8	02/01/17	STP	ISSUE FOR PERMITS
9	02/01/17	STP	ISSUE FOR PERMITS
10	02/01/17	STP	ISSUE FOR PERMITS
11	02/01/17	STP	ISSUE FOR PERMITS
12	02/01/17	STP	ISSUE FOR PERMITS
13	02/01/17	STP	ISSUE FOR PERMITS
14	02/01/17	STP	ISSUE FOR PERMITS
15	02/01/17	STP	ISSUE FOR PERMITS
16	02/01/17	STP	ISSUE FOR PERMITS
17	02/01/17	STP	ISSUE FOR PERMITS
18	02/01/17	STP	ISSUE FOR PERMITS
19	02/01/17	STP	ISSUE FOR PERMITS
20	02/01/17	STP	ISSUE FOR PERMITS

POST ROAD
EXTENSION
(RTE 1)



REVISIONS	BY	DATE	DESCRIPTION
1	STP	01/15/17	ISSUE FOR PERMITS
2	STP	02/01/17	ISSUE FOR PERMITS
3	STP	02/01/17	ISSUE FOR PERMITS
4	STP	02/01/17	ISSUE FOR PERMITS
5	STP	02/01/17	ISSUE FOR PERMITS
6	STP	02/01/17	ISSUE FOR PERMITS
7	STP	02/01/17	ISSUE FOR PERMITS
8	STP	02/01/17	ISSUE FOR PERMITS
9	STP	02/01/17	ISSUE FOR PERMITS
10	STP	02/01/17	ISSUE FOR PERMITS
11	STP	02/01/17	ISSUE FOR PERMITS
12	STP	02/01/17	ISSUE FOR PERMITS
13	STP	02/01/17	ISSUE FOR PERMITS
14	STP	02/01/17	ISSUE FOR PERMITS
15	STP	02/01/17	ISSUE FOR PERMITS
16	STP	02/01/17	ISSUE FOR PERMITS
17	STP	02/01/17	ISSUE FOR PERMITS
18	STP	02/01/17	ISSUE FOR PERMITS
19	STP	02/01/17	ISSUE FOR PERMITS
20	STP	02/01/17	ISSUE FOR PERMITS

DEPARTMENT OF TRANSPORTATION
SAFETY IMPROVEMENTS
 NEWPORT, WARWICK & JOHNSTON
 RHODE ISLAND

SIGNING AND STRIPING PLAN - 1
 LOCATION 1
 MAIN AVENUE (RTE. 113) AT JEFFERSON BLVD.
 WARWICK, RHODE ISLAND

CHECKED BY: DATE: 02/01/17 SCALE: 1"=50'



REV.	DATE	BY	DESCRIPTION
1	01/11/17	SP	ISSUE FOR PERMITS

NO.	DATE	BY	DESCRIPTION
1	01/11/17	SP	ISSUE FOR PERMITS

DATE: 01/11/17
SCALE: 1"=20'

PROJECT: SAFETY IMPROVEMENTS
LOCATION: SANDY LANE AT WARWICK AVENUE (RTE. 117A)
WARWICK, RHODE ISLAND

CHECKED BY: _____
DATE: 01/11/17

DESIGNED BY: _____
DATE: 01/11/17

DRAWN BY: _____
DATE: 01/11/17

SCALE: 1"=20'

PROJECT: SAFETY IMPROVEMENTS
LOCATION: SANDY LANE AT WARWICK AVENUE (RTE. 117A)
WARWICK, RHODE ISLAND

CHECKED BY: _____
DATE: 01/11/17

DESIGNED BY: _____
DATE: 01/11/17

DRAWN BY: _____
DATE: 01/11/17

SCALE: 1"=20'

PROJECT: SAFETY IMPROVEMENTS
LOCATION: SANDY LANE AT WARWICK AVENUE (RTE. 117A)
WARWICK, RHODE ISLAND

CHECKED BY: _____
DATE: 01/11/17

DESIGNED BY: _____
DATE: 01/11/17

DRAWN BY: _____
DATE: 01/11/17

SCALE: 1"=20'

PROJECT: SAFETY IMPROVEMENTS
LOCATION: SANDY LANE AT WARWICK AVENUE (RTE. 117A)
WARWICK, RHODE ISLAND

CHECKED BY: _____
DATE: 01/11/17

DESIGNED BY: _____
DATE: 01/11/17

DRAWN BY: _____
DATE: 01/11/17

SCALE: 1"=20'

PROJECT: SAFETY IMPROVEMENTS
LOCATION: SANDY LANE AT WARWICK AVENUE (RTE. 117A)
WARWICK, RHODE ISLAND

CHECKED BY: _____
DATE: 01/11/17

DESIGNED BY: _____
DATE: 01/11/17

DRAWN BY: _____
DATE: 01/11/17

SCALE: 1"=20'

PROJECT: SAFETY IMPROVEMENTS
LOCATION: SANDY LANE AT WARWICK AVENUE (RTE. 117A)
WARWICK, RHODE ISLAND

CHECKED BY: _____
DATE: 01/11/17

DESIGNED BY: _____
DATE: 01/11/17

DRAWN BY: _____
DATE: 01/11/17

SCALE: 1"=20'

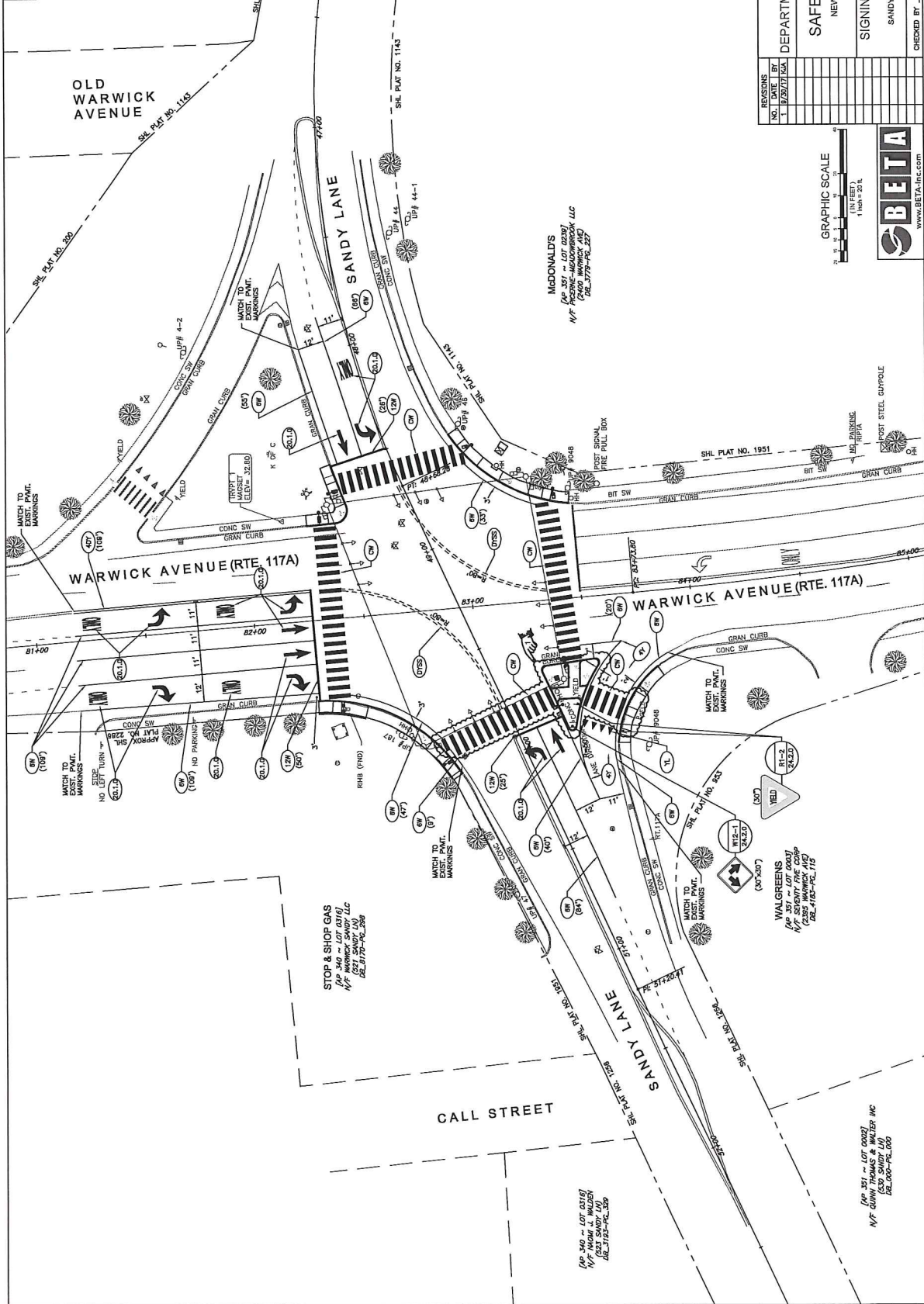
PROJECT: SAFETY IMPROVEMENTS
LOCATION: SANDY LANE AT WARWICK AVENUE (RTE. 117A)
WARWICK, RHODE ISLAND

CHECKED BY: _____
DATE: 01/11/17

DESIGNED BY: _____
DATE: 01/11/17

DRAWN BY: _____
DATE: 01/11/17

SCALE: 1"=20'



NO.	DATE	BY	DESCRIPTION
1	01/11/17	SP	ISSUE FOR PERMITS

REVISIONS BY: _____
DATE: 01/11/17

PROJECT: SAFETY IMPROVEMENTS
LOCATION: SANDY LANE AT WARWICK AVENUE (RTE. 117A)
WARWICK, RHODE ISLAND

CHECKED BY: _____
DATE: 01/11/17

DESIGNED BY: _____
DATE: 01/11/17

DRAWN BY: _____
DATE: 01/11/17

SCALE: 1"=20'

PROJECT: SAFETY IMPROVEMENTS
LOCATION: SANDY LANE AT WARWICK AVENUE (RTE. 117A)
WARWICK, RHODE ISLAND

CHECKED BY: _____
DATE: 01/11/17

DESIGNED BY: _____
DATE: 01/11/17

PROJECT: SAFETY IMPROVEMENTS
LOCATION: SANDY LANE AT WARWICK AVENUE (RTE. 117A)
WARWICK, RHODE ISLAND

CHECKED BY: _____
DATE: 01/11/17

DESIGNED BY: _____
DATE: 01/11/17

DRAWN BY: _____
DATE: 01/11/17

SCALE: 1"=20'

PROJECT: SAFETY IMPROVEMENTS
LOCATION: SANDY LANE AT WARWICK AVENUE (RTE. 117A)
WARWICK, RHODE ISLAND

CHECKED BY: _____
DATE: 01/11/17

DESIGNED BY: _____
DATE: 01/11/17

DRAWN BY: _____
DATE: 01/11/17

SCALE: 1"=20'

PROJECT: SAFETY IMPROVEMENTS
LOCATION: SANDY LANE AT WARWICK AVENUE (RTE. 117A)
WARWICK, RHODE ISLAND

CHECKED BY: _____
DATE: 01/11/17

DESIGNED BY: _____
DATE: 01/11/17

DRAWN BY: _____
DATE: 01/11/17

SCALE: 1"=20'

PROJECT: SAFETY IMPROVEMENTS
LOCATION: SANDY LANE AT WARWICK AVENUE (RTE. 117A)
WARWICK, RHODE ISLAND

CHECKED BY: _____
DATE: 01/11/17

DESIGNED BY: _____
DATE: 01/11/17

DRAWN BY: _____
DATE: 01/11/17

SCALE: 1"=20'

PROJECT: SAFETY IMPROVEMENTS
LOCATION: SANDY LANE AT WARWICK AVENUE (RTE. 117A)
WARWICK, RHODE ISLAND

CHECKED BY: _____
DATE: 01/11/17

REV.	DATE	BY	DESCRIPTION
1	01/17/20	RI	ISSUE FOR PERMITS
2	01/17/20	RI	ISSUE FOR PERMITS
3	01/17/20	RI	ISSUE FOR PERMITS

PROJECT NO. 1578-1580(40) 2017 17 20
 SHEET NO. 17 OF 20

POST ROAD EXTENSION (RTE 1)

APFD LOCATION	APFD TONE DURATION (sec.)	APFD MESSAGE	APFD TYPE	APFD DETAILS	APFD DURATION
A	0.15	"WAIT"	PERMISSIVE	REFER TO TEN TONS PER SECOND	REFER TO NOTE 5
B	0.15	"WAIT"	PERMISSIVE	REFER TO TEN TONS PER SECOND	REFER TO NOTE 5
C	0.15	"WAIT"	PERMISSIVE	REFER TO TEN TONS PER SECOND	REFER TO NOTE 5
D	0.15	"WAIT"	PERMISSIVE	REFER TO TEN TONS PER SECOND	REFER TO NOTE 5
E	0.15	"WAIT"	PERMISSIVE	REFER TO TEN TONS PER SECOND	REFER TO NOTE 5
F	0.15	"WAIT"	PERMISSIVE	REFER TO TEN TONS PER SECOND	REFER TO NOTE 5

NOTES:
 1. ALL AUDIBLE SOUNDS SHALL BE AUTOMATICALLY ADJUSTED IN RESPONSE TO AMBIENT SOUND LEVELS. THE DETECTOR SHALL NOT BE ACTIVATED AT A MINIMUM OF AMBIENT SOUND AND A MAXIMUM OF 5 DBA LOUDER THAN AMBIENT SOUND.
 2. AUDIBLE VERBAL SPEECH MESSAGES SHALL BE RECORDED IN A CLEAR, MODERATELY PITCHED VOICE, WITH EXCELLENT DUTION AND MODERATE PACING.
 3. THE DETECTOR SHALL BE COMPATIBLE WITH ALL CURRENTLY PROGRAMMED SIGNALS.
 4. OR LESS THAN INDICATED.
 5. ENGINEER.



TRAFFIC SIGNAL MATERIAL LIST	ITEM NO.	LEGEND	ITEM DESCRIPTION
1	16	CHI-OH	BREAK INTO EXISTING HANDHOLE
2	14	CHI-OH	ADJUST EXISTING HANDHOLE TO GRADE
3	20	CHI-OH	2 INCH POLYVINYL CHLORIDE PLASTIC CONDUIT (SCHEDULE 40) - UNDERGROUND
4	21	CHI-OH	2 INCH RIGID STEEL CONDUIT - UNDERGROUND
5	22	CHI-OH	8" ALUMINUM PEDESTAL POLE AND FOUNDATION, SI. STD. 19.4.0 WITH 15' CONDUIT TUBING
6	60d	CHI-OH	14 AWG 2 CONDUCTOR TWISTED SHIELDED CABLE
7	76	CHI-OH	14 AWG 3 CONDUCTOR CABLE
8	74	CHI-OH	14 AWG 3 CONDUCTOR CABLE
9	78	CHI-OH	14 AWG 3 CONDUCTOR CABLE
10	81	CHI-OH	ACCESSIBLE PEDESTRIAN DETECTOR - FURBISHMENT WITH SIGN
11	10c	CHI-OH	REVERSE EXISTING CONTROLLER CABINET
12	10c	CHI-OH	REMOVE AND SALVAGE TRAFFIC SIGNAL SYSTEM

TRAFFIC SIGNAL MATERIAL LIST

DEPARTMENT OF TRANSPORTATION
 SAFETY IMPROVEMENTS
 NEWPORT, WARWICK & JOHNSTON
 RHODE ISLAND

TRAFFIC SIGNAL PLAN - 1
 LOCATION 1
 MAIN AVENUE (RTE. 113) AT JEFFERSON BLVD.,
 WARWICK, RHODE ISLAND

CHECKED BY: DATE: 02/22/21 SCALE: 1"=50'

REVISIONS

DATE: 02/22/21

SCALE: 1"=50'

DATE: 02/22/21

SCALE: 1"=50'

DATE: 02/22/21

SCALE: 1"=50'

DATE: 02/22/21

SCALE: 1"=50'

GRAPHIC SCALE
 1"=50'

GRAPHIC SCALE
 1"=50'

GRAPHIC SCALE
 1"=50'

GRAPHIC SCALE
 1"=50'

GRAPHIC SCALE
 1"=50'

GRAPHIC SCALE
 1"=50'

GRAPHIC SCALE
 1"=50'

GRAPHIC SCALE
 1"=50'

GRAPHIC SCALE
 1"=50'

GRAPHIC SCALE
 1"=50'

GRAPHIC SCALE
 1"=50'

GRAPHIC SCALE
 1"=50'

GRAPHIC SCALE
 1"=50'

CONSTRUCTION NOTE

CONSTRUCTION NOTE

CONSTRUCTION NOTE

CONSTRUCTION NOTE

CONSTRUCTION NOTE

CONSTRUCTION NOTE

CONSTRUCTION NOTE

CONSTRUCTION NOTE

CONSTRUCTION NOTE

CONSTRUCTION NOTE

CONSTRUCTION NOTE

CONSTRUCTION NOTE

CONSTRUCTION NOTE

TRAFFIC SIGNAL NOTES

TRAFFIC SIGNAL NOTES

TRAFFIC SIGNAL NOTES

TRAFFIC SIGNAL NOTES

TRAFFIC SIGNAL NOTES

TRAFFIC SIGNAL NOTES

TRAFFIC SIGNAL NOTES

TRAFFIC SIGNAL NOTES

TRAFFIC SIGNAL NOTES

TRAFFIC SIGNAL NOTES

TRAFFIC SIGNAL NOTES

TRAFFIC SIGNAL NOTES

TRAFFIC SIGNAL NOTES

PEDESTRIAN HEADS

PEDESTRIAN HEADS

PEDESTRIAN HEADS

PEDESTRIAN HEADS

PEDESTRIAN HEADS

PEDESTRIAN HEADS

PEDESTRIAN HEADS

PEDESTRIAN HEADS

PEDESTRIAN HEADS

PEDESTRIAN HEADS

PEDESTRIAN HEADS

PEDESTRIAN HEADS

PEDESTRIAN HEADS

CONSTRUCTION NOTE

CONSTRUCTION NOTE

CONSTRUCTION NOTE

CONSTRUCTION NOTE

CONSTRUCTION NOTE

CONSTRUCTION NOTE

CONSTRUCTION NOTE

CONSTRUCTION NOTE

CONSTRUCTION NOTE

CONSTRUCTION NOTE

CONSTRUCTION NOTE

CONSTRUCTION NOTE

CONSTRUCTION NOTE

CONSTRUCTION NOTE

CONSTRUCTION NOTE

CONSTRUCTION NOTE

CONSTRUCTION NOTE

CONSTRUCTION NOTE

CONSTRUCTION NOTE

CONSTRUCTION NOTE

CONSTRUCTION NOTE

CONSTRUCTION NOTE

CONSTRUCTION NOTE

CONSTRUCTION NOTE

CONSTRUCTION NOTE

CONSTRUCTION NOTE

CONSTRUCTION NOTE

CONSTRUCTION NOTE

CONSTRUCTION NOTE

CONSTRUCTION NOTE

CONSTRUCTION NOTE

CONSTRUCTION NOTE

CONSTRUCTION NOTE

CONSTRUCTION NOTE

CONSTRUCTION NOTE

CONSTRUCTION NOTE

CONSTRUCTION NOTE

CONSTRUCTION NOTE

CONSTRUCTION NOTE

CONSTRUCTION NOTE

CONSTRUCTION NOTE

CONSTRUCTION NOTE

CONSTRUCTION NOTE

CONSTRUCTION NOTE

CONSTRUCTION NOTE

CONSTRUCTION NOTE

CONSTRUCTION NOTE

CONSTRUCTION NOTE

CONSTRUCTION NOTE

CONSTRUCTION NOTE

CONSTRUCTION NOTE

CONSTRUCTION NOTE

CONSTRUCTION NOTE

CONSTRUCTION NOTE

CONSTRUCTION NOTE

CONSTRUCTION NOTE

CONSTRUCTION NOTE

CONSTRUCTION NOTE

CONSTRUCTION NOTE

CONSTRUCTION NOTE

CONSTRUCTION NOTE

CONSTRUCTION NOTE

CONSTRUCTION NOTE

CONSTRUCTION NOTE

CONSTRUCTION NOTE

CONSTRUCTION NOTE

CONSTRUCTION NOTE

CONSTRUCTION NOTE

CONSTRUCTION NOTE

CONSTRUCTION NOTE

CONSTRUCTION NOTE

CONSTRUCTION NOTE

CONSTRUCTION NOTE

CONSTRUCTION NOTE

CONSTRUCTION NOTE

CONSTRUCTION NOTE

CONSTRUCTION NOTE

CONSTRUCTION NOTE

CONSTRUCTION NOTE

CONSTRUCTION NOTE

CONSTRUCTION NOTE

CONSTRUCTION NOTE

CONSTRUCTION NOTE

CONSTRUCTION NOTE

CONSTRUCTION NOTE

CONSTRUCTION NOTE

CONSTRUCTION NOTE

CONSTRUCTION NOTE

CONSTRUCTION NOTE

CONSTRUCTION NOTE

CONSTRUCTION NOTE

CONSTRUCTION NOTE

CONSTRUCTION NOTE

CONSTRUCTION NOTE

CONSTRUCTION NOTE

CONSTRUCTION NOTE

CONSTRUCTION NOTE

CONSTRUCTION NOTE

CONSTRUCTION NOTE

CONSTRUCTION NOTE

CONSTRUCTION NOTE

CONSTRUCTION NOTE

CONSTRUCTION NOTE

CONSTRUCTION NOTE

CONSTRUCTION NOTE

CONSTRUCTION NOTE

CONSTRUCTION NOTE

CONSTRUCTION NOTE

CONSTRUCTION NOTE

CONSTRUCTION NOTE

CONSTRUCTION NOTE

CONSTRUCTION NOTE

CONSTRUCTION NOTE

CONSTRUCTION NOTE

CONSTRUCTION NOTE

CONSTRUCTION NOTE

CONSTRUCTION NOTE

CONSTRUCTION NOTE

CONSTRUCTION NOTE

CONSTRUCTION NOTE

CONSTRUCTION NOTE

CONSTRUCTION NOTE

CONSTRUCTION NOTE

CONSTRUCTION NOTE

CONSTRUCTION NOTE

CONSTRUCTION NOTE

CONSTRUCTION NOTE

CONSTRUCTION NOTE

CONSTRUCTION NOTE

CONSTRUCTION NOTE

CONSTRUCTION NOTE

CONSTRUCTION NOTE

CONSTRUCTION NOTE

CONSTRUCTION NOTE

CONSTRUCTION NOTE

CONSTRUCTION NOTE

CONSTRUCTION NOTE

CONSTRUCTION NOTE

CONSTRUCTION NOTE

CONSTRUCTION NOTE

CONSTRUCTION NOTE

CONSTRUCTION NOTE

CONSTRUCTION NOTE

CONSTRUCTION NOTE

CONSTRUCTION NOTE

CONSTRUCTION NOTE

CONSTRUCTION NOTE

CONSTRUCTION NOTE

CONSTRUCTION NOTE

CONSTRUCTION NOTE

CONSTRUCTION NOTE

CONSTRUCTION NOTE

CONSTRUCTION NOTE

CONSTRUCTION NOTE

CONSTRUCTION NOTE

CONSTRUCTION NOTE

CONSTRUCTION NOTE

CONSTRUCTION NOTE

CONSTRUCTION NOTE

CONSTRUCTION NOTE

CONSTRUCTION NOTE

CONSTRUCTION NOTE

CONSTRUCTION NOTE

CONSTRUCTION NOTE

CONSTRUCTION NOTE

CONSTRUCTION NOTE

CONSTRUCTION NOTE

CONSTRUCTION NOTE

CONSTRUCTION NOTE

CONSTRUCTION NOTE

CONSTRUCTION NOTE

CONSTRUCTION NOTE

CONSTRUCTION NOTE

CONSTRUCTION NOTE

CONSTRUCTION NOTE

CONSTRUCTION NOTE

CONSTRUCTION NOTE

CONSTRUCTION NOTE

CONSTRUCTION NOTE

CONSTRUCTION NOTE

CONSTRUCTION NOTE

CONSTRUCTION NOTE

CONSTRUCTION NOTE

CONSTRUCTION NOTE

CONSTRUCTION NOTE

CONSTRUCTION NOTE

CONSTRUCTION NOTE

CONSTRUCTION NOTE

DATE	BY	REVISIONS
11/18/2017	SP/SP/SP/SP/SP	1

DATE	BY	REVISIONS
11/18/2017	SP/SP/SP/SP/SP	1

DATE	BY	REVISIONS
11/18/2017	SP/SP/SP/SP/SP	1

DATE	BY	REVISIONS
11/18/2017	SP/SP/SP/SP/SP	1

DATE	BY	REVISIONS
11/18/2017	SP/SP/SP/SP/SP	1

DATE	BY	REVISIONS
11/18/2017	SP/SP/SP/SP/SP	1

DATE	BY	REVISIONS
11/18/2017	SP/SP/SP/SP/SP	1

DATE	BY	REVISIONS
11/18/2017	SP/SP/SP/SP/SP	1

DATE	BY	REVISIONS
11/18/2017	SP/SP/SP/SP/SP	1

DATE	BY	REVISIONS
11/18/2017	SP/SP/SP/SP/SP	1

DATE	BY	REVISIONS
11/18/2017	SP/SP/SP/SP/SP	1

OLD WARWICK AVENUE

SANDY LANE

WARWICK AVENUE (RTE. 117A)

WARWICK AVENUE (RTE. 117A)

SANDY LANE

CALL STREET

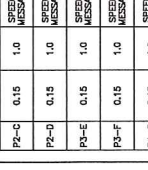
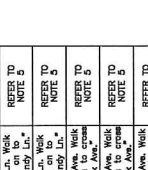
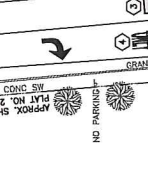
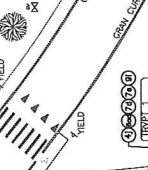
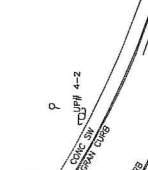
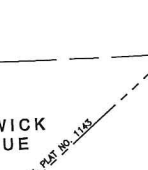
WARWICK AVENUE (RTE. 117A)

SANDY LANE

WARWICK AVENUE (RTE. 117A)

SANDY LANE

WARWICK AVENUE (RTE. 117A)



CONSTRUCTION NOTE
THE ITEM REMOVE AND SALVAGE TRAFFIC SIGNAL SYSTEM SHALL INCLUDE THE FOLLOWING:
• 8 DETECTOR, PEDESTRIAN PUSHPUTTON WITH SON
• MISCELLANEOUS CONDUIT/WIRING

TRAFFIC SIGNAL NOTES
1. THE CONTRACTOR SHALL REPLACE THE EXISTING EQUIPMENT AS NOTED ON THE PLANS AND REMOVE TO PROVIDE A FULLY FUNCTIONAL SIGNAL CONSISTENT WITH EXISTING FUNCTIONALITY AND OPERATIONS.
2. NEW LOOP DETECTORS SHALL BE SPICED IN ADJACENT HANDCARRIES.

TRAFFIC SIGNAL MATERIAL LIST
ITEM NO. LEGEND ITEM CODE ITEM DESCRIPTION

10	105.0700	PROJECT TYPE "X" HANDHOLE, IN STD. 18.00
20	106.0200	2 INCH FIBER OPTIC CONDUIT (SCHEDULE 40) - UNDERGROUND
40	111.2000	2 INCH RIGID STEEL CONDUIT - UNDERGROUND
60	114.2000	8' ALUMINUM PEDESTAL POLE AND FOUNDATION, R. STD. 18.40 WITH CANTONMENT WALK
70	T04.5302	14 AWG 2 CONDUCTOR TWISTED SHIELDED CABLE
74	T04.5303	14 AWG 3 CONDUCTOR CABLE
76	T04.5305	14 AWG 5 CONDUCTOR CABLE
80	112.8801	TRAFFIC SIGNAL CONTROLLER - PUSHBUTTON WITH SON REAR EXISTING CONTROLLER CABINET

GRAPHIC SCALE
(IN FEET)
1" = 40'

SIGNAL PEDESTRIAN HEADS
(ALL LED MODULES)
A, B, C, D, E, F, G, H
ONE SECTION WITH COUNTDOWN TIMER

DEPARTMENT OF TRANSPORTATION
SAFETY IMPROVEMENTS
NEWPORT, WARWICK & JOHNSTON
RHODE ISLAND

TRAFFIC SIGNAL PLAN - 2
LOCATION 4
SANDY LANE AT WARWICK AVE. (RTE. 117A)
WARWICK, RHODE ISLAND

CHECKED BY: _____ DATE: 05/22/17 SCALE: 1"=40'

001161_018_135944002_0001

11/18/2017 SP/SP/SP/SP/SP 1

APPID	DESCRIPTION	TYPE	MESSAGE	DETAILS	DURATION
P1-A	1.0	SPEECH MESSAGE	"WMT"	"Sandy Ln, Walk sign is on to"	REFER TO NOTE D
P1-B	1.0	SPEECH MESSAGE	"WMT"	"Sandy Ln, Walk sign is on to"	REFER TO NOTE D
P2-C	1.0	SPEECH MESSAGE	"WMT"	"Sandy Ln, Walk sign is on to"	REFER TO NOTE D
P2-D	1.0	SPEECH MESSAGE	"WMT"	"Sandy Ln, Walk sign is on to"	REFER TO NOTE D
P3-E	1.0	SPEECH MESSAGE	"WMT"	"Sandy Ln, Walk sign is on to"	REFER TO NOTE D
P3-F	1.0	SPEECH MESSAGE	"WMT"	"Sandy Ln, Walk sign is on to"	REFER TO NOTE D
P4-G	1.0	SPEECH MESSAGE	"WMT"	"Sandy Ln, Walk sign is on to"	REFER TO NOTE D
P4-H	1.0	SPEECH MESSAGE	"WMT"	"Sandy Ln, Walk sign is on to"	REFER TO NOTE D

1. AUDIBLE VERBAL SPEECH MESSAGES SHALL BE PROGRAMMED TO A MAXIMUM VOLUME OF 100 DBA AND SHALL INITIALLY BE PROGRAMMED TO LEVEL UP TO A MINIMUM OF AMBIENT SOUND AND A MAXIMUM OF 5 DBA LOUDER THAN AMBIENT SOUND.
2. AUDIBLE VERBAL SPEECH MESSAGES SHALL BE PROGRAMMED TO A MAXIMUM VOLUME OF 100 DBA AND SHALL INITIALLY BE PROGRAMMED TO LEVEL UP TO A MINIMUM OF AMBIENT SOUND AND A MAXIMUM OF 5 DBA LOUDER THAN AMBIENT SOUND.
3. RING-TONE PERCUSSIVE TONES SHALL CONSIST OF MULTIPLE FREQUENCIES WITH DOMINANT COMPONENT @ 800 Hz.
4. OR LESS THAN INDICATED.
5. WALK DURATION CURRENTLY PROGRAMMED SHALL NOT BE ALTERED, UNLESS DIRECTED BY THE ENGINEER.

NO LEFT TURN APPROX. STA. 2285
NO PARKING APPROX. STA. 2285

NO PARKING APPROX. STA. 2285

NO PARKING APPROX. STA. 2285

NO PARKING APPROX. STA. 2285

NO PARKING APPROX. STA. 2285

NO PARKING APPROX. STA. 2285

NO PARKING APPROX. STA. 2285

11/18/2017 SP/SP/SP/SP/SP 1