

September 28, 2017

STATE OF RHODE ISLAND AND PROVIDENCE PLANTATION  
DEPARTMENT OF ADMINISTRATION

DIVISION OF PURCHASES BID NO. 7558488

RHODE ISLAND DEPARTMENT OF TRANSPORTATION

RHODE ISLAND CONTRACT NO.2017-CB-046

FEDERAL-AID PROJECT NO. FAP Nos: BRO-0548(001)

**Pine Street Bridge No. 548 (31)**

Marrin Street to Cedar Street

CITY/TOWN OF Pawtucket, Providence

COUNTY OF PROVIDENCE

NOTICE TO PROSPECTIVE BIDDERS

ADDENDUM NO. 1 Prospective bidders and all concerned are hereby notified of the following changes in the Plans, Specifications, Proposal and Distribution of Quantities for this contract. These changes shall be incorporated in the Plans, Specifications, Proposal and Distribution of Quantities, and shall become an integral part of the Contract Documents.

**A. Distribution of Quantities**

1. Index Pages

Delete Pages Index 1 through Index 4 in their entirety and replace them with revised Pages Index 1 (R-1) through Index 4(R-1) attached to this Addendum No. 1. Items with changes are indicated in bold type.

2. Pages 15 & 16

Delete Pages 15 and 16 in their entirety and replace them with revised Page 15(R-1), new Page 15a, revised Page 16(R-1), and new Page 16a attached to this Addendum No. 1. Items 922.0100 and 923.0105 have been revised

3. Page 17

Delete Page 17 in its entirety and replace it with revised Page 17(R-1) and new Page 17a attached to this Addendum No. 1. Item 923.0120 has been revised.

**B. Drawings/Plans - Change/Addition**

1. Sheet No. 9 - South Abutment Plan

Revise Sheet No. 9 as shown on Sketch No. 1(R-1) attached to this Addendum No. 1. A note regarding payment for Paved Slope has been added.

2. Sheet No. 16 - Substructure Details

Revise Sheet No. 16 as shown on Sketch No. 2(R-1) attached to this Addendum No. 1. A note regarding the limits of the Fractured Rib form liner has been added.

3. Sheet No. 39 - Contaminated Soil Management Plan

Delete Sheet No. 39 in its entirety and replace with revised Sheet No. 39(R-1) attached to this Addendum No. 1. The Contaminated Soil Stockpile Area Plan, Detail, and Notes have been revised.



RI Department of Transportation

Administrator, Division of Project Management

**Table of Contents - Distribution of Quantities**

Project Name - Pine Street Bridge No. 548 (31)

Estimate Name - Addendum No. 1

R.I. Contract No. - 2017-CB-046

FAP Nos: BRO-0548(001)

ItemCode	Description	Page
201.0301	CUTTING AND DISPOSING ISOLATED TREES AND STUMPS (4"- 24")	1
201.0401	REMOVE AND DISPOSE GRANITE CURB	1
201.0403	REMOVE AND DISPOSE SIDEWALKS	1
201.0407	REMOVE AND DISPOSE PAVEMENT AND RIGID BASE	1
201.0409	REMOVE AND DISPOSE FLEXIBLE PAVEMENT	1
201.0419	REMOVE AND DISPOSE FENCE	2
201.0423	REMOVE AND DISPOSE HANDHOLE	2
201.0428	REMOVE AND DISPOSE FRAME AND GRATE OR FRAME AND COVER	2
201.0610	REMOVE AND DISPOSE DIRECTIONAL, WARNING, REGULATORY, SERVICE, AND STREET SIGNS	2
201.0613	REMOVE AND STOCKPILE LIGHT STANDARDS	3
201.0617	REMOVE AND DISPOSE CONDUIT - ALL SIZES	3
202.0100	EARTH EXCAVATION	3
202.9901	HANDLING, HAULING, AND STOCKPILING OF WET CONTAMINATED SOIL	3
202.9905	LOAD, HAUL, AND DISPOSE SOIL AND SEDIMENT, TYPE 2	3
203.0100	STRUCTURAL EXCAVATION EARTH	3
203.0220	STRUCTURAL EXCAVATION ROCK MECHANICAL	4
203.0600	FILL GRAVEL BORROW UNDER STRUCTURES	4
203.0650	CRUSHED STONE FILL UNDER STRUCTURES	4
203.0700	PERVIOUS FILL	4
204.0100	TRIMMING AND FINE GRADING	4
206.0301	COMPOST FILTER SOCK	4
206.9901	INLET SEDIMENT CONTROL DEVICE	5
208.9901	STOCKPILE CONTAMINATED SOIL AND SEDIMENT	5
212.2000	CLEANING AND MAINTENANCE OF EROSION CONTROLS	5
302.0100	GRAVEL BORROW SUBBASE COURSE	5
401.1000	CLASS 19.0 HMA	6
401.2003	CLASS 12.5 HMA FOR PATCHING	6
401.3100	MODIFIED CLASS 9.5 HMA	6
402.9901	FRICITION COURSE	6
402.9902	FRICITION COURSE FOR SHOULDERS	6
403.0300	ASPHALT EMULSION TACK COAT	7
415.9901	INTELLIGENT COMPACTION FOR HMA	7
601.0300	CLASS A PORTLAND CEMENT CONCRETE	7
701.9901	VERIZON TELEPHONE FACILITIES	7
702.0516	FRAME AND GRATE, HIGH CAPACITY, STANDARD 6.3.4	7
702.0543	GRANITE APRON STONE 38'' STANDARD 7.3.8	7
702.9901	NATIONAL GRID DUCTS FOR PINE STREET BRIDGE NO. 548 APPROACHES	8
702.9902	NATIONAL GRID ELECTRIC BRIDGE CROSSING FOR PINE STREET BRIDGE NO. 548	8
703.0708	8" PERFORATED POLYVINYL CHLORIDE PIPE M278 UNDERDRAIN WITH FILTER MATERIAL STANDARD 1.1.0	8
704.0100	RECONSTRUCT CATCH BASIN/CORBEL CONES	8
704.0300	RECONSTRUCT CATCH BASIN/VERTICAL WALLS	8
707.1900	ADJUST FRAME & COVER TO GRADE	9
707.2000	ADJUST FRAME AND GRATE TO GRADE	9
708.9040	CLEANING AND FLUSHING PIPE ALL SIZES	9
708.9041	CLEANING CATCH BASINS ALL TYPES AND SIZES	9
708.9042	CLEANING MANHOLES ALL TYPES AND SIZES	10
713.9901	ADJUST CATHODIC PROTECTION BOX AND RISER TO GRADE	10
800.9901	PINE STREET BRIDGE NO. 548	10
803.9901	REMOVE AND DISPOSE EXISTING BRIDGE SUPERSTRUCTURE	10

**Table of Contents - Distribution of Quantities**

Project Name - Pine Street Bridge No. 548 (31)

Estimate Name - Addendum No. 1

R.I. Contract No. - 2017-CB-046

FAP Nos: BRO-0548(001)

ItemCode	Description	Page
803.9902	REMOVE AND DISPOSE PORTIONS OF EXISTING BRIDGE SUBSTRUCTURE	10
832.8050	BRIDGE MINIMUM CLEARANCE SIGNS	11
832.8051	BRIDGE IDENTIFICATION SIGNS	11
901.0151	TERMINAL END SECTION SINGLE FACE STANDARD 34.3.2	11
901.9901	STEEL BEAM BRIDGE CONNECTION TRAILING END (W/NESTED RAIL)	11
903.0110	WOVEN WIRE RIGHT-OF-WAY FENCE STANDARD 31.3.0	11
903.0410	TEMPORARY CHAIN LINK FENCE	11
903.0411	TEMPORARY CHAIN LINK GATE	12
905.0110	PORTLAND CEMENT SIDEWALK MONOLITHIC STANDARD 43.1.0	12
905.0115	PORTLAND CEMENT CONCRETE DRIVEWAY STANDARD 43.5.0	12
906.0110	GRANITE CURB, QUARRY SPLIT STRAIGHT, STANDARD 7.3.0	12
906.0111	GRANITE CURB, QUARRY SPLIT CIRCULAR, STANDARD 7.3.0	13
906.0130	GRANITE RAMP STONE STRAIGHT STANDARD 7.3.9	13
906.0131	GRANITE RAMP STONE CIRCULAR STANDARD 7.3.9	13
906.0700	REMOVE, HANDLE, HAUL TRIM RESET CURB EDGING, STRAIGHT, CIRCULAR ALL TYPES	13
906.9903	GRANITE WHEELCHAIR RAMP TRANSITION CURB - STRAIGHT	13
906.9904	GRANITE WHEELCHAIR RAMP TRANSITION CURB - CIRCULAR	14
907.0100	WATER FOR DUST CONTROL	14
909.3021	PRECAST MEDIAN BARRIER SINGLE-FACED STANDARD 40.2.1	14
914.5010	FLAGPERSONS	14
914.5020	FLAGPERSONS - OVERTIME	14
916.9901	NARROW CONDITION IMPACT ATTENUATOR	14
920.9901	FILTER FABRIC FOR CATCH BASIN INLET PROTECTION	15
<b>922.0100</b>	<b>TEMPORARY CONSTRUCTION SIGNS STANDARD 29.1.0 AND 27.1.1</b>	<b>15</b>
<b>923.0105</b>	<b>DRUM BARRICADE STANDARD 26.2.0</b>	<b>16</b>
<b>923.0120</b>	<b>PLASTIC PIPE BARRICADE STANDARD 26.3.0</b>	<b>16</b>
923.0200	FLUORESCENT TRAFFIC CONES STANDARD 26.1.0	17
924.0113	ADVANCE WARNING ARROW PANEL	17
925.0112	PORTABLE CHANGEABLE MESSAGE SIGN	17
926.0121	UNANCHORED PRECAST CONCRETE BARRIER FOR TEMPORARY TRAFFIC CONTROL STANDARD 40.5.0	17
926.0140	REFLECTIVE DELINEATORS FOR TEMPORARY CONCRETE BARRIERS	17
928.9901	TRUCK MOUNTED ATTENUATOR WITH TRUCK MOUNTED FLASHING ARROW BOARD	18
929.0110	FIELD OFFICE	18
931.0110	CLEANING AND SWEEPING PAVEMENT	18
932.0100	CUTTING AND MATCHING ASPHALT	18
932.0210	FULL DEPTH SAWCUT OF BITUMINOUS PAVEMENT AND RIGID BASE	19
932.0230	FULL DEPTH SAWCUT OF PORTLAND CEMENT CONCRETE SIDEWALK/DRIVEWAY	19
935.0400	REMOVING BITUMINOUS PAVEMENT BY MICRO MILLING	19
936.0100	MOBILIZATION AND DEMOBILIZATION	19
937.0200	MAINTENANCE AND MOVEMENT TRAFFIC PROTECTION	19
942.0200	DETECTABLE WARNING PANEL STANDARD 48.1.0	20
943.0200	TRAINEE MAN-HOURS	20
L01.0104	PLANTABLE SOIL 4 INCHES DEEP	20
L02.0101	GENERAL HIGHWAY SEEDING (TYPE 1)	20
L05.0506	JUTE MESH	20
L11.0102	TREE PLANT PROTECTION DEVICE STANDARD 51.1.0	20
T04.6902	'2' STRANDED COPPER CONDUCTOR 600V INSULATION	21
T04.6906	'6' STRANDED COPPER CONDUCTOR 600V INSULATION	21
T04.6910	'10' STRANDED COPPER CONDUCTOR 600V INSULATION	21

**Table of Contents - Distribution of Quantities**

Project Name - Pine Street Bridge No. 548 (31)

Estimate Name - Addendum No. 1

R.I. Contract No. - 2017-CB-046

FAP Nos: BRO-0548(001)

ItemCode	Description	Page
T04.7300	IN-LINE FUSED DISCONNECT DEVICE WITH FUSE WEATHERPROOF	21
T04.7400	IN-LINE UNFUSED DISCONNECT DEVICE	21
T04.7500	SPLICE KIT	22
T04.9901	23 AWG CATEGORY 6 STP - NETWORK VIDEO CABLE	22
T05.0100	PRECAST TYPE A HANDHOLE STANDARD 18.2.0	22
T05.0310	PULL BOX ON STRUCTURE TYPE W STANDARD 18.6.3	22
T05.0400	BREAK INTO EXISTING HANDHOLE	22
T06.4030	3 IN. RIGID STEEL CONDUIT IN STRUCTURE	22
T06.5130	3 INCH SCHEDULE 40 POLYVINYL CHLORIDE PLASTIC CONDUIT - UNDERGROUND	23
T06.7044	EXPANSION COUPLING WITH TRANSVERSE MOTION 4" PVC	23
T07.9901	FURNISH AND INSTALL 195 WATT LED LUMINAIRE	23
T08.2031	ALUMINUM LIGHTING STD. 30 FT. W/ SINGLE DAVIT ARM EXTN. 10 FT. STANDARD 18.3.0	23
T12.9901	MODIFY TRAFFIC SIGNAL SYSTEMS	23
T12.9902	MAINTENANCE OF TRAFFIC SIGNAL SYSTEMS	24
T12.9910	REMOVE AND REPLACE CAMERA LOWERING DEVICE	24
T12.9911	FURNISH AND INSTALL HARDENED ETHERNET SWITCH WITH SFP FIBER OPTIC TRANSCEIVERS	24
T15.0100	DIRECTIONAL REGULATORY AND WARNING SIGNS	24
T15.2000	PARKING SIGNS	25
T15.9901	REMOVE, STOCKPILE, AND RESET SIGN ON EXISTING FOUNDATIONS	25
T20.0006	6 INCH WHITE FAST - DRYING WATERBORNE PAVEMENT MARKING PAINT	25
T20.0012	12 INCH WHITE FAST - DRYING WATERBORNE PAVEMENT MARKING PAINT	26
T20.0106	6 INCH YELLOW FAST - DRYING WATERBORNE PAVEMENT MARKING PAINT	26
T20.0606	TEMPORARY PAVEMENT MARKING (TAPE) YELLOW AND/OR WHITE - 6 INCH	26
T20.0820	FAST DRYING WATERBORNE PAVEMENT ARROW - STRAIGHT, LEFT, RIGHT, OR COMBINED STANDARD 20.1.0	26
T20.0822	FAST DRYING WATERBORNE PAVEMENT MARKING WORD "ONLY" STANDARD 20.1.0	26
T20.0828	FAST-DRYING WATERBORNE PAINT PAVEMENT MARKING - YIELD LINE SYMBOL	27
T20.1000	REMOVE EXISTING PAVEMENT MARKINGS	27
T20.1010	REMOVE EXISTING PAVEMENT MARKINGS	27
T20.1106	6 INCH TEMPORARY WATERBORNE PAINT PAVEMENT MARKINGS WHITE	27
T20.1112	12 INCH TEMPORARY WATERBORNE PAINT PAVEMENT MARKINGS WHITE	28
T20.1206	6 INCH TEMPORARY WATERBORNE PAINT PAVEMENT MARKINGS YELLOW	28
T20.1310	TEMPORARY WATERBORNE PAINT PAVEMENT ARROW - STRAIGHT, LEFT, RIGHT OR COMBINED STANDARD 20.1.0	28
T20.1314	TEMPORARY WATERBORNE PAINT PAVEMENT MARKING - YIELD LINE SYMBOL	28
T20.2006	6 INCH EPOXY RESIN PAVEMENT MARKINGS WHITE	28
T20.2012	12 INCH EPOXY RESIN PAVEMENT MARKINGS WHITE	29
T20.2016	6 INCH EPOXY RESIN PAVEMENT MARKINGS YELLOW	30
T20.2020	EPOXY RESIN PAVEMENT ARROW - STRAIGHT, LEFT, RIGHT, OR COMBINED STANDARD 20.1.0	30
T20.2022	EPOXY RESIN PAVEMENT MARKING WORD "ONLY" STANDARD 20.1.0	30
T20.2042	EPOXY RESIN PAVEMENT MARKING - YIELD LINE SYMBOL	30
T20.9958	THERMOPLASTIC PAVEMENT MARKINGS - ROUTE SHIELD SYMBOL	31

**Table of Contents - Distribution of Quantities**

Project Name - Pine Street Bridge No. 548 (31)

Estimate Name - Addendum No. 1

R.I. Contract No. - 2017-CB-046

FAP Nos: BRO-0548(001)

<b>ItemCode</b>	<b>Description</b>	<b>Page</b>
T20.9960	EPOXY RESIN PAVEMENT MARKING WORD "TO"	31

**Distribution of Quantities**

Project Name - Pine Street Bridge No. 548 (31)

Estimate Name - Addendum No. 1

R.I. Contract No. - 2017-CB-046

FAP Nos: BRO-0548(001)

Item No.	Item Code	Description	UM	Qty.	Pay Code	Seq. No.
071	916.9901 Cont.	I-95 NB		1.00	0011	01
		I-95 SB		1.00	0011	01
<b>Item 916.9901 Total:</b>				<b>2.00</b>		
072	920.9901	<b>FILTER FABRIC FOR CATCH BASIN</b>	<b>SY</b>			
		<b>INLET PROTECTION</b>				
		PROJECT WIDE				
		AS DIRECTED BY THE ENGINEER		15.00	0011	01
		FROM ITEM 708.9041		85.00	0011	01
<b>Item 920.9901 Total:</b>				<b>100.00</b>		
073	922.0100	<b>TEMPORARY CONSTRUCTION SIGNS</b>	<b>SF</b>			
		<b>STANDARD 29.1.0 AND 27.1.1</b>				
		I-95 NB/SB DETOURS				
		M1-1 (24X24)		8.00	0011	01
		M3-1 (24X12)		2.00	0011	01
		M3-3 (24X12)		2.00	0011	01
		M6-2L (21X15)		4.50	0011	01
		R11-2 (48X30)		20.00	0011	01
		PARK N RIDE				
		R11-2MOD 48"X30"		30.00	0011	01
		PINE STREET DETOUR				
		M1-1 (24X24)		20.00	0011	01
		M3-3 (24X12)		8.00	0011	01
		M4-5 (21X15)		4.50	0011	01
		M4-8 (24X12)		8.00	0011	01
		M4-8A (24X12)		2.00	0011	01
		M6-1L (21X15)		4.50	0011	01
		M6-1R (21X15)		4.50	0011	01
		M6-3 (21X15)		2.25	0011	01
		OM4-1 (18X18)		18.00	0011	01
		R11-2 (48X30)		20.00	0011	01
		R11-3A (60X30)		12.50	0011	01

**Distribution of Quantities**

Project Name - Pine Street Bridge No. 548 (31)

Estimate Name - Addendum No. 1

R.I. Contract No. - 2017-CB-046

FAP Nos: BRO-0548(001)

<b>Item No.</b>	<b>Item Code</b>	<b>Description</b>	<b>UM</b>	<b>Qty.</b>	<b>Pay Code</b>	<b>Seq. No.</b>
073	922.0100	Cont.	R9-11A (24X12)	6.00	0011	01
			R9-9 (24X12)	6.00	0011	01



**Distribution of Quantities**

Project Name - Pine Street Bridge No. 548 (31)  
 Estimate Name - Addendum No. 1  
 R.I. Contract No. - 2017-CB-046  
 FAP Nos: BRO-0548(001)

Item No.	Item Code	Description	UM	Qty.	Pay Code	Seq. No.
073	922.0100 Cont.	W20-1 (36X36)		36.00	0011	01
		W20-2C (36X36)		9.00	0011	01
		PROJECT LIMIT SIGNING				
		RISTD 27.1.1 (48X72)		96.00	0011	01
		W20-1 (48X48)		64.00	0011	01
		TYPICAL PROJECT SIGNS				
		AS DIRECTED BY THE ENGINEER		187.75	0011	01
		E5-1 (72X60)		90.00	0011	01
		E5-2 (48X36)		36.00	0011	01
		G20-2 (48X24)		16.00	0011	01
		M4-10L (48X18)		12.00	0011	01
		R11-2 MOD (48X30)		20.00	0011	01
		R1-2 (48X48X48)		14.00	0011	01
		R3-8B MOD (60X36)		60.00	0011	01
		W13-1P (30X30)		12.50	0011	01
		W1-4CL (48X48)		32.00	0011	01
		W1-4CR (48X48)		32.00	0011	01
		W20-1 (48X48)		64.00	0011	01
		W20-5AL		64.00	0011	01
		W20-5AR (48X48)		64.00	0011	01
		W20-5L (48X48)		32.00	0011	01
		W20-5R (48X48)		32.00	0011	01
		W23-2 (36X36)		18.00	0011	01
		W4-2L (48X48)		128.00	0011	01
		W4-2R (48X48)		128.00	0011	01
<b>Item 922.0100 Total:</b>				<b>1,430.00</b>		
074	923.0105	DRUM BARRICADE STANDARD 26.2.0	BDAY			
		PROJECT WIDE				
		AS DIRECTED BY THE ENGINEER		15,000.00	0011	01
		PARK N RIDE CLOSURE		2,520.00	0011	01
<b>Item 923.0105 Total:</b>				<b>17,520.00</b>		

**Distribution of Quantities**

Project Name - Pine Street Bridge No. 548 (31)

Estimate Name - Addendum No. 1

R.I. Contract No. - 2017-CB-046

FAP Nos: BRO-0548(001)

<b>Item No.</b>	<b>Item Code</b>	<b>Description</b>	<b>UM</b>	<b>Qty.</b>	<b>Pay Code</b>	<b>Seq. No.</b>
075	923.0120	PLASTIC PIPE BARRICADE STANDARD	EACH			

**Distribution of Quantities**

Project Name - Pine Street Bridge No. 548 (31)  
 Estimate Name - Addendum No. 1  
 R.I. Contract No. - 2017-CB-046  
 FAP Nos: BRO-0548(001)

Item No.	Item Code	Description	UM	Qty.	Pay Code	Seq. No.
075	923.0120	Cont. 26.3.0				
		PROJECT WIDE				
		AS DIRECTED BY THE ENGINEER		30.00	0011	01
		PARK N RIDE CLOSURE		3.00	0011	01
				<b>Item 923.0120 Total:</b>	<b>33.00</b>	
076	923.0200	FLUORESCENT TRAFFIC CONES STANDARD	EACH			
		26.1.0				
		PROJECT WIDE				
		AS DIRECTED BY THE ENGINEER		350.00	0011	01
				<b>Item 923.0200 Total:</b>	<b>350.00</b>	
077	924.0113	ADVANCE WARNING ARROW PANEL	PDAY			
		PROJECT WIDE				
		AS DIRECTED BY THE ENGINEER		350.00	0011	01
				<b>Item 924.0113 Total:</b>	<b>350.00</b>	
078	925.0112	PORTABLE CHANGEABLE MESSAGE SIGN	PDAY			
		PROJECT WIDE				
		AS DIRECTED BY THE ENGINEER		300.00	0011	01
				<b>Item 925.0112 Total:</b>	<b>300.00</b>	
079	926.0121	UNANCHORED PRECAST CONCRETE	LF			
		BARRIER FOR TEMPORARY TRAFFIC				
		CONTROL STANDARD 40.5.0				
		CENTER PIER LANE CLOSURES				
		I-95 NB		660.00	0011	01
		I-95 SB		800.00	0011	01
		PINE STREET				
		NORTH END		30.00	0011	01
		SOUTH END		40.00	0011	01
				<b>Item 926.0121 Total:</b>	<b>1,530.00</b>	

**Distribution of Quantities**

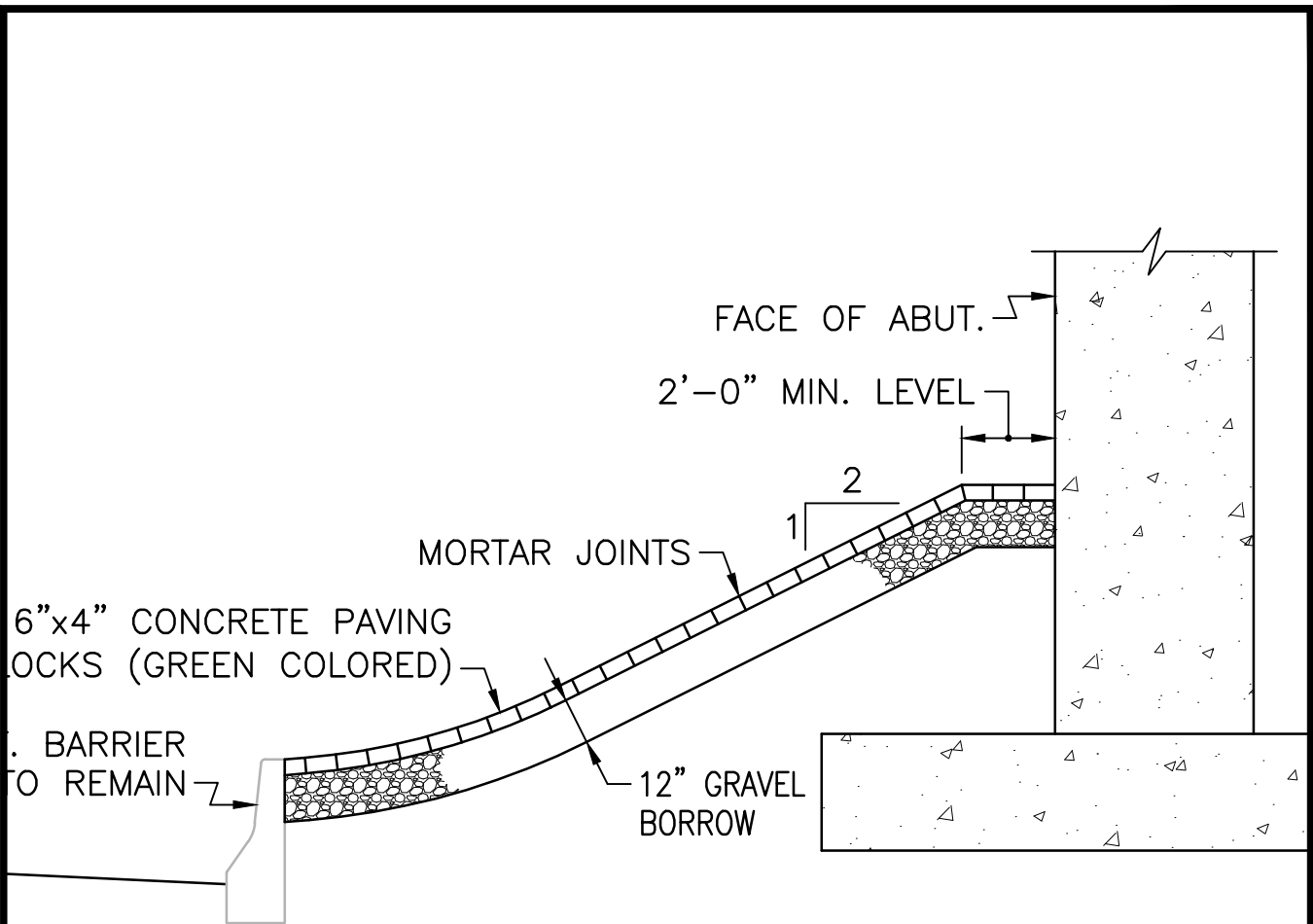
Project Name - Pine Street Bridge No. 548 (31)

Estimate Name - Addendum No. 1

R.I. Contract No. - 2017-CB-046

FAP Nos: BRO-0548(001)

<b>Item No.</b>	<b>Item Code</b>	<b>Description</b>	<b>UM</b>	<b>Qty.</b>	<b>Pay Code</b>	<b>Seq. No.</b>
080	926.0140	REFLECTIVE DELINEATORS FOR	EACH			




**PAVED SLOPE DETAIL**

SCALE: 1/4" = 1'-0"

**NOTE:**

ALL LABOR, EQUIPMENT, AND MATERIALS, INCLUDING GRAVEL BORROW, AND ALL OTHER INCIDENTALS REQUIRED TO INSTALL THE PAVED SLOPE SHALL BE INCLUDED FOR PAYMENT IN THE BRIDGE LUMP SUM ITEM.



 <b>Gordon R. Archibald, Inc.</b> Civil and Environmental Engineers	TITLE OF SKETCH PLANS FOR BRIDGE REPLACEMENT <b>PINE STREET BRIDGE NO. 548</b> <b>SOUTH ABUTMENT PLAN</b>	R.I. CONTRACT NO. 2017-CB-046
	DATE: 9/28/2017	ADDENDUM NUMBER 1

OF 2'-0" MIN. ON ALL SIDES TO F  
 POST. WHERE NO GRAVEL BORROW  
 UNDISTURBED SOIL.

2. THE CONTRACTOR SHALL SET THE F  
 ELEVATION AND ALIGNMENT, AND BA  
 MATERIAL (CLSM) TO THE ELEVATION
3. SEE SHEET NO. 26 FOR PRECAST E

**END POST ELE**

SCALE: 1/2" =

**NOTE:**

FRACTURED RIB FORM LINER FINISH SHALL BE APPLIED TO THE  
 ENTIRE LENGTH OF THE FRONT FACE AND ENDS OF ABUTMENT  
 STEMS, FROM THE TOP OF FOOTING TO THE BOTTOM OF THE  
 PRECAST ABUTMENT BEAM SEAT; AND THE ENTIRE LENGTH OF  
 THE FRONT FACE OF WALL STEMS, FROM THE TOP OF FOOTING  
 TO THE BOTTOM OF THE CAST-IN-PLACE WALL PARAPET.



14'-0"

PRECAST APPROACH SLAB PANEL  
 LIMITS OF BITUMINOUS DAMP-PROOFING

FILL 2"Ø BLOCKOUT AT DOWEL  
 CONNECTION WITH NON-SHRINK GROUT  
 3" HMA PAVEMENT  
 #6@12"  
 2"Ø PVC SLEEVE,  
 SEE NOTE (TYP.)

6"



**Gordon R. Archibald, Inc.**  
 Civil and Environmental Engineers

DATE: 9/28/2017

TITLE OF SKETCH

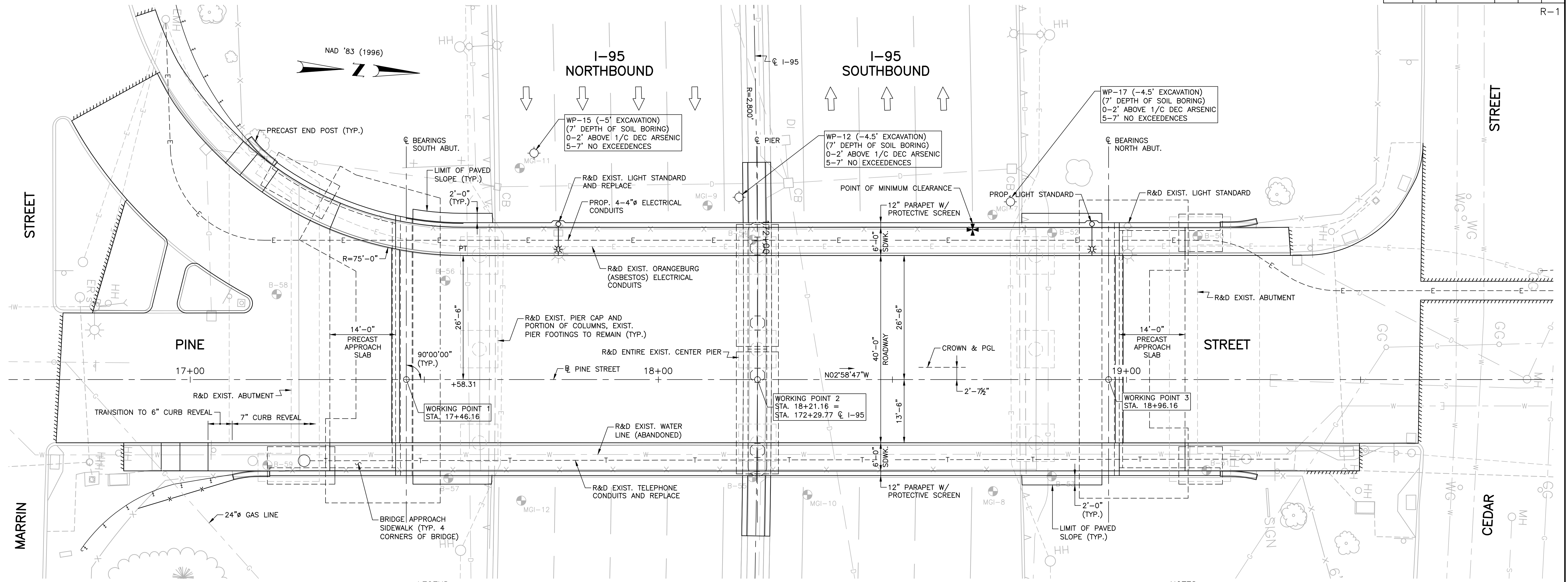
PLANS FOR BRIDGE REPLACEMENT  
**PINE STREET BRIDGE NO. 548**  
**SUBSTRUCTURE DETAILS**

ADDENDUM NUMBER 1

R.I. CONTRACT NO.  
 2017-CB-046

**SKETCH NO.**  
**2**

REVISION TO  
 SHEET NO. 16

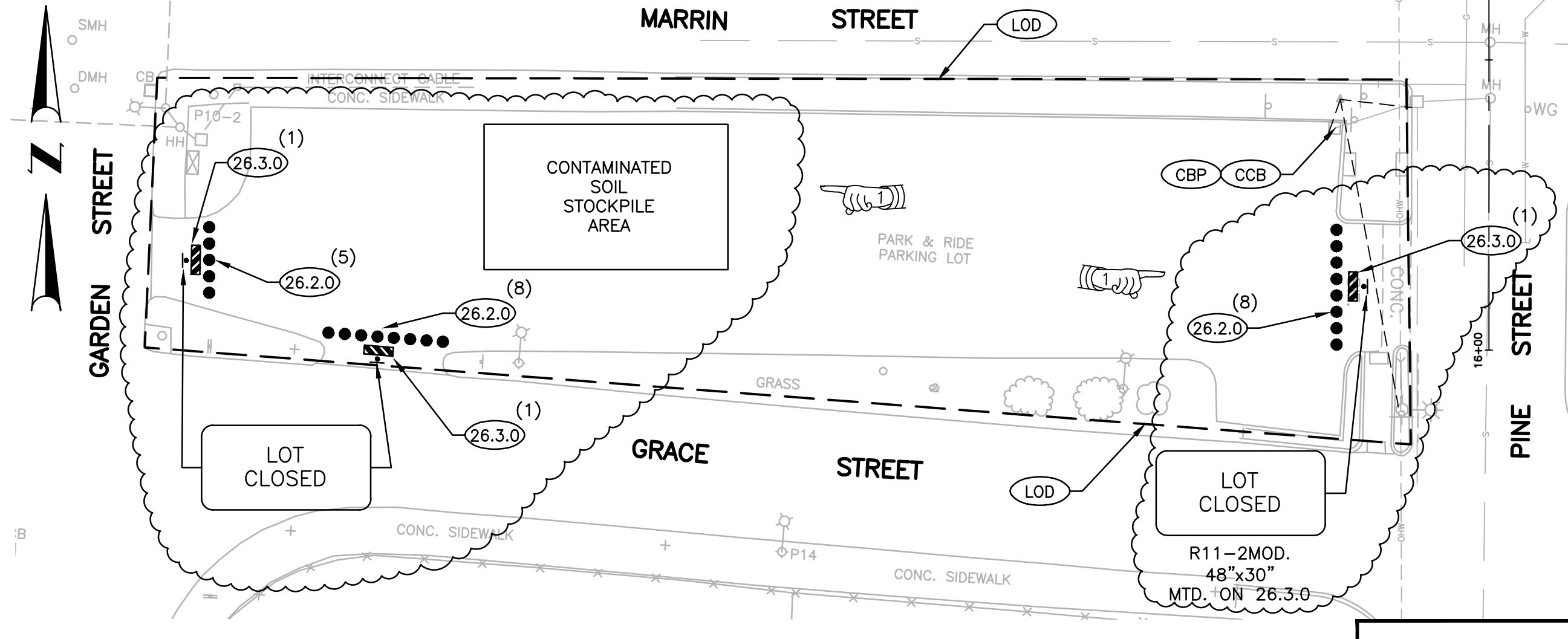
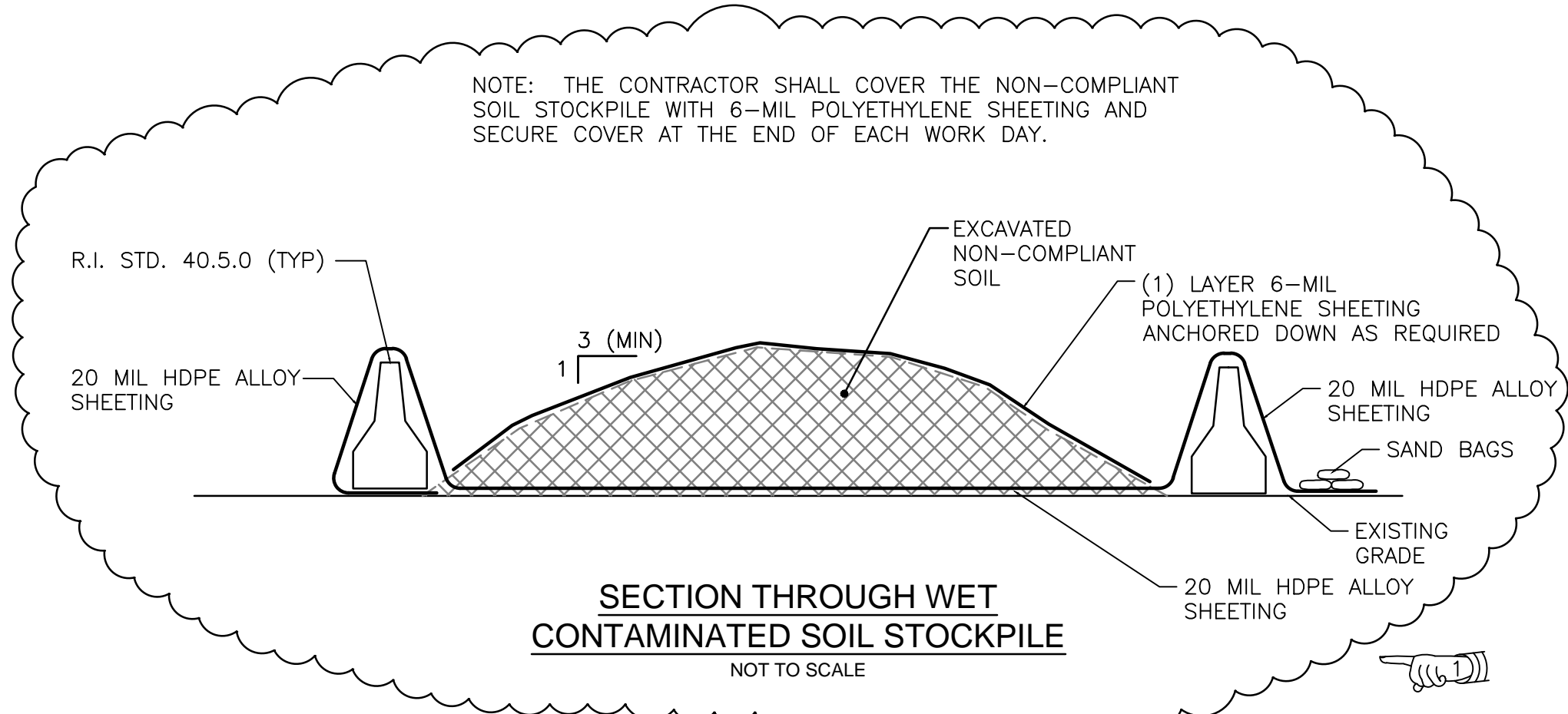


**BORING NOTE:**  
 WP-BORINGS WERE TAKEN FROM WRIGHT-PIERCE "BRIDGE NO. 550 REPLACEMENT REMEDIAL ACTION WORK PLAN GEORGE, PINE, AND GARDEN STREET BRIDGE SOIL BORING LOCATION PLAN", DATED OCTOBER 2009.

**LEGEND**  
 ⊕ WP-10 THROUGH 18  
 (-14) EXCAVATION  
 (-12) SOIL BORING DEPTH

WRIGHT-PIERCE PROJECT SOIL BORING, BORING CONTRACTOR GEOSARCH, INC. PERFORMED JULY 15 AND 16, 2009. ANTICIPATED DEPTH OF EXCAVATION DEPTH OF BORING

- NOTES:**
1. ALL SOIL EXCAVATION WITHIN THE PROJECT LIMIT OF DISTURBANCE SHALL BE CONSIDERED CONTAMINATED SOIL EXCAVATION.
  2. ALL WORK SHALL BE COMPLETED IN ACCORDANCE WITH THE RIDEM REMEDIAL APPROVAL LETTER DATED JANUARY 21, 2010. A COPY OF THE LETTER IS PROVIDED IN THE CONTRACT SPECIFICATION DOCUMENT APPENDIX C.
  3. THE PARK & RIDE FACILITY WHERE THE CONTAMINATED SOIL IS TO BE TEMPORARILY STOCKPILED SHALL BE CLOSED TO PUBLIC USE UTILIZING BARRICADES AND SIGNAGE AS INDICATED ON THE PLAN. THE FACILITY MAY ONLY BE CLOSED TO THE PUBLIC DURING THE BRIDGE CLOSURE PERIOD DEFINED IN CONTRACT SPECIFIC SPECIFICATION CODE 108.11.
  4. ALL AREAS OF THE PARK & RIDE FACILITY DISTURBED BY CONTRACTOR'S OPERATIONS, INCLUDING ANY DAMAGED PAVEMENT MARKINGS, SHALL BE RESTORED TO ORIGINAL CONDITIONS PRIOR TO RE-OPENING THE FACILITY TO PUBLIC USE. NO SEPARATE PAYMENT WILL BE MADE FOR RESTORING THE AREAS; IT SHALL BE CONSIDERED INCIDENTAL TO THE CONTRACT.



CONTAMINATED SOIL STOCKPILE AREA  
 LOCATION DETAIL  
 SCALE: 1"=20'

REVISIONS		
NO.	DATE	BY
1	9/27/17	WCS

**RHODE ISLAND  
 DEPARTMENT OF TRANSPORTATION**

**PLANS FOR BRIDGE REPLACEMENT  
 PINE STREET BRIDGE NO. 548**

PAWTUCKET, RHODE ISLAND

**CONTAMINATED SOIL  
 MANAGEMENT PLAN**

CHECKED BY \_\_\_\_\_ DATE \_\_\_\_\_ SCALE 1" = 10'

**Gordon R. Archibald, Inc.**  
 Civil and Environmental Engineers  
 Pawtucket, Rhode Island