



**State of Rhode Island
Department of Administration / Division of Purchases
One Capitol Hill, Providence, Rhode Island 02908-5855
Tel: (401) 574-8100 Fax: (401) 574-8387**

ADDENDUM #3

RFP # 7551623

**TITLE: DESIGN/BUILD SERVICES FOR ACCELERATED
BRIDGE CONSTRUCTION-OXFORD ST. BRIDGE 653**

OPENING DATE AND TIME: JUNE 30, 2017 – 11:30 A.M.

Please see attached informed and revised price proposal form.

**Lisa Hill
Chief Buyer**

June 5, 2017

STATE OF RHODE ISLAND AND PROVIDENCE PLANTATION
DEPARTMENT OF TRANSPORTATION
DIVISION OF PURCHASES BID NO. 7551623
RHODE ISLAND CONTRACT NO. 2017-DB-022
FEDERAL AID PROJECT NO. FAP NO: BRO-0653(001)

Improvements to I-95
Accelerated Bridge Construction (ABC) of
Bridge No. 653 Superstructure Replacement
I-95 NB/SB over Oxford Street

CITY OF PROVIDENCE

COUNTY OF PROVIDENCE

NOTICE TO PROSPECTIVE BIDDERS

ADDENDUM NO. 3:

Prospective Bidders and all concerned are hereby notified of the following changes in the Plans, Specifications, Proposal, and Distribution of Quantities for this contract. These changes shall be incorporated in the Plans, Specifications, Proposal and Distribution of Quantities, and shall become an integral part of the Contract Documents.

A. Part 1, Instructions for Respondents

1. Delete page 8 (R-1) in its entirety and replace it with page 8 (R2) attached to this Addendum No. 3. The page has been revised.

B. Part 2, Project Technical Requirements

1. Delete page 19 (R-1) in its entirety and replace it with page 19 (R2) attached to this Addendum No. 3. The page has been revised.
2. Delete page 33 in its entirety and replace it with page 33 (R1) attached to this Addendum No. 3. The page has been revised.

C. Part 3, Price Proposal Form

1. Delete the Price Proposal Form in its entirety and replace it with Price Proposal

ADDENDUM NO. 3

Form (R1) attached to this Addendum No. 3. The page has been revised.

D. Plans

VOLUME 1

1. VOLUME 1 SHEET 1 OF 26 – COVER SHEET

Delete Sheet 1 (R-1) in its entirety and replace with Sheet 1 (R-2) attached to this Addendum No. 3. This sheet has been revised.

2. VOLUME 1 SHEET 5 OF 26 – JOB SPECIFIC PLAN SYMBOLS, LEGEND
AND NOTES

Delete Sheet 5 (R-1) in its entirety and replace with Sheet 5 (R-2) attached to this Addendum No. 3. This sheet has been revised.

VOLUME 2

1. VOLUME 2 SHEET 1 OF 25 – COVER SHEET

Delete Sheet 1 (R-1) in its entirety and replace with Sheet 1 (R-2) attached to this Addendum No. 3. This sheet has been revised.

2. VOLUME 2 SHEET 4 OF 25 – GENERAL BRIDGE NOTES

Delete Sheet 4 in its entirety and replace with Sheet 4 (R-1) attached to this Addendum No. 3. This sheet has been revised.

3. VOLUME 2 SHEET 7 OF 25 – GENERAL PLAN AND ELEVATION

Delete Sheet 7 (R-1) in its entirety and replace with Sheet 7 (R-2) attached to this Addendum No. 3. This sheet has been revised.

4. VOLUME 2 SHEET 16 OF 25 – NORTH ABUTMENT PLAN AND
ELEVATION

Delete Sheet 16 (R-1) in its entirety and replace with Sheet 16 (R-2) attached to this Addendum No. 3. This sheet has been revised.

5. VOLUME 2 SHEET 18 OF 25 – WALLS SHEET 1 OF 2

Delete Sheet 18 (R-1) in its entirety and replace with Sheet 18 (R-2) attached to this Addendum No. 3. This sheet has been revised.

6. VOLUME 2 SHEET 19 OF 25 – WALLS SHEET 2 OF 2

Delete Sheet 19 (R-1) in its entirety and replace with Sheet 19 (R-2) attached to this Addendum No. 3. This sheet has been revised.

7. VOLUME 2 SHEET 19A OF 25 – EAST WALLS AND BARRIER –
DEMOLITION

Delete Sheet 19A in its entirety and replace with Sheet 19A (R-1) attached to this Addendum No. 3. This sheet has been revised.

8. VOLUME 2 SHEET 19B OF 25 – EAST WALLS AND BARRIER –PROPOSED

Delete Sheet 19B in its entirety and replace with Sheet 19B (R-1) attached to this Addendum No. 3. This sheet has been revised.

9. VOLUME 2 SHEET 22 OF 25 – DIAPHRAGM DETAILS

Delete Sheet 22 (R-1) in its entirety and replace with Sheet 22 (R-2) attached to this Addendum No. 3. This sheet has been revised.



RI Department of Transportation
Administrator, Division of Project Management

Part 1, Instructions for Respondents

Access to adjacent properties shall be maintained at all times during construction. Provision for emergency response vehicles to access properties on Oxford Street shall be maintained during construction.

All design and construction shall be in and compliance with all State and Federal environmental laws, regulations, requirements, permit conditions, and commitments.

QA/QC SERVICES: The D/B Team will be responsible for providing quality assurance and quality control (QA/QC) plans for design, inspection, sampling and testing for all materials.

The Respondent will be responsible for providing Construction Quality Control at the Construction Contractor level and for providing a complete Quality Control and Quality Assurance program for all engineering and design. The Construction Quality Control function is to assess and adjust design, production and construction so as to control the level of quality being produced in the Project. The purpose of QC is to measure those quality characteristics and to inspect those activities that affect the production at a time when corrective action can be taken to substantially decrease the likelihood that appreciable non-conforming material will be incorporated in the Project.

Acceptance Sampling and Testing will be performed by RIDOT or their consultant. Independent Assurance Sampling and Testing will be performed by RIDOT staff.

Submittals received must be in accordance with guidelines as outlined in this RFP and the State's General Conditions of Purchase which can be accessed online through the *Rhode Island Vendor Information Program*, or "RIVIP" as it is known at:

<http://www.purchasing.ri.gov>

All Respondents are advised to review all sections of this RFP thoroughly and to follow the instructions carefully. Failure to make a complete submission as described elsewhere herein may result in rejection of the submission.

2.2 Right-of-Way and Site Acquisition

The D/B Team shall acquire temporary easements, permanent easements, and or permanent takings necessary for the replacement of the RIDOT Bridge No. 653 superstructure, bearings, wingwalls and approaches over Oxford Street as described in this RFP. The Respondent shall be responsible for assuming all risks associated with the acquisition of R.O.W (to accommodate its unique solution), including any public hearings that may be required,

Part 2, Project Technical Requirements

Construction:

- C-1 Mobilization
- C-2 Structure monitoring
- C-3 Site preparation
- C-4 Traffic Management Implementation
- C-5 Easements
- C-6 Demolition
- C-7 Substructure Rehabilitation
- C-8 Superstructure Replacement
- C-9 Roadway Work
- C-10 Concrete Barrier on Existing East Wall
- C-11 Utilities

2.6 Environmental

Introduction

Coordination with RIDOT's Natural Resources Unit (NRU) and Cultural Resource Unit (CRU) is an important aspect of the project and respondents are expected to address both natural and cultural resource issues in their proposals. The Environmental Manager role is necessary for this project as described in RFP Part 1, Section 4.6.1. The project will be subject to requirements for management of stormwater, erosion control, and other pollution prevention measures. The Design-Builder responsibilities will include environmental compliance monitoring and reporting to RIDOT, as well as compliance with RI Department of Environmental Management (RIDEM) Environmental Justice (EJ) policy and notification requirements (as the project is located within an EJ area).

The Oxford Street Bridge No. 653 project is part of a larger project that RIDOT is undertaking, which includes the installation of 14 toll gantries and work at other bridge locations. RIDOT is coordinating with the Federal Highway Administration (FHWA) to complete an Environmental Assessment (EA) for the toll gantry projects, as required under the National Environmental Policy Act (NEPA). Discussions are underway to clarify the EA process and how the bridge work (including Bridge No. 653) will be incorporated in the NEPA review. RIDOT will be obtaining the necessary environmental approvals as per FHWA Order 6640.1A FHWA Policy on Permissible Project-Related Design Activities During the NEPA Process.

(<http://www.fhwa.dot.gov/legsregs/directives/orders/66401a.cfm>).

RIDOT expects that the Bridge 653 work will qualify for a Categorical Exclusion (CE) under NEPA. RIDOT is undertaking a Section 106 review for historical and cultural resource impacts as part of the NEPA process, and an analysis of environmental impacts. The Design-Builder will be expected to

that the Design-Builder has concerning right-of-way during the design and construction of the Project shall be directed to the RIDOT Project Manager and Resident Engineer.

DPM 320.11; Access to Private Property applies to this Project. The Design-Builder shall be responsible for assuming all risks associated with the acquisition of right-of-way (to accommodate its unique solution), including any public hearings that may be required, and no modifications to the Contract Price or Contract Time will be granted or considered.

2.13 Planting

All areas adjacent to the bridge disturbed by any activities necessitated by the Project shall be completely restored to pre-construction conditions, and shall be re-seeded for grass, as directed by RIDOT. All grass seeding shall be done in accordance with Part L of the RIDOT Standards Specifications.

2.14 Utilities

DPM 450.13; Utility Submissions and Coordination shall apply to the Project.

The Design-Builder shall be responsible for coordination of the Project design and construction with all utilities that may be affected. The Design-Builder shall be responsible for coordinating the work of the Design-Builder, its subcontractors and the various utilities. The resolution of any conflicts between utilities and the construction of the Project shall be the responsibility of the Design-Builder. No additional compensation or time will be granted for any delays, inconveniences, or damage sustained by the Design-Builder or its subcontractors due to interference from utilities or the operation of relocating utilities.

The Design-Builder shall be responsible for utility designations, utility location (test holes), conflict evaluations, cost responsibility determinations, utility relocation designs, utility relocations and adjustments, utility reimbursement to RIDOT, replacement land rights acquisition and utility coordination required for the Project. The Design-Builder shall be responsible for all necessary utility relocations and adjustments to occur in accordance with the accepted Baseline Schedule. All efforts and cost necessary for utility designations, utility locations (test holes), conflict evaluations, cost responsibility determination, utility relocation designs, utility relocations and adjustments, utility reimbursements to RIDOT, replacement land rights acquisition and utility coordination shall be included in the Design-Builders Price Proposal.

Upon receipt of acceptance of the work by each respective Utility, and/or in accordance with the agreements between the Design-Builder and each respective Utility, the RIDOT will pay the utility directly, and will withhold an equivalent amount from the Design-Builder or from retainage to reimburse the RIDOT. The RIDOT will not pay for utility work that is a betterment above and

Part 3, Price Proposal Form

RFP Part 3 - Price Proposal Form			
<u>Item No.</u>	<u>Description</u>	<u>Unit</u>	<u>Total</u>
D-1	Preliminary Engineering	lump sum	\$
D-2	Historical/Environmental Coordination	lump sum	\$
D-3	30% Design and Plans	lump sum	\$
D-4	PS&E Design and Plans	lump sum	\$
D-5	Traffic Management Layout and Plans	lump sum	\$
C-1	Mobilization	lump sum	\$
C-2	Structure Monitoring	lump sum	\$
C-3	Site Preparation	lump sum	\$
C-4	Traffic Management Implementation	lump sum	\$
C-5	Easements	lump sum	\$
C-6	Demolition	lump sum	\$
C-7	Substructure Rehabilitation	lump sum	\$
C-8	Superstructure Replacement	lump sum	\$
C-9	Roadway Work	lump sum	\$
C-10	Concrete Barrier on Existing East Wall	lump sum	\$
C-11	Utilities	lump sum	\$
Total Cost of Project: (Bidder shall specify price information in both words and numbers)			
Lump Sum:			\$

D: Denotes Design Items; C: Denotes Construction Items

Owner/President Signature: _____ Date: _____

Address: _____

Plans: VOLUME 1

INDEX

SHEET NO.	DESCRIPTION
VOLUME 1	
1	COVER
2	STANDARD PLAN SYMBOLS & STANDARD LEGEND
3	STANDARD NOTES - 1
4	STANDARD NOTES - 2
5	JOB-SPECIFIC PLAN SYMBOLS, LEGEND & NOTES
6	TYPICAL SECTION
7	GENERAL PLAN
8	GENERAL DETAILS
9	LOCATION PLAN
10	DRAINAGE & UTILITY PLAN
11	PROFILE - I-95
12	PROFILE - OXFORD STREET
13	PAVEMENT MARKING PLAN
14 - 26	TRAFFIC CONTROL PLANS

VOLUME 2 BRIDGE NO. 653 - BRIDGE PLANS
FOR INDEX SEE "BRIDGE PLANS VOLUME 2"

R.I. STANDARD SPECIFICATIONS AND STANDARD DETAILS

SPECIFICATIONS TO GOVERN THIS PROJECT ARE THE R.I. STANDARD SPECIFICATIONS FOR ROAD AND BRIDGE CONSTRUCTION, AMENDED AUGUST 2013, WITH ALL REVISIONS AND THE STATE AND FEDERAL SPECIAL PROVISIONS INCLUDED IN THE CONTRACT DOCUMENTS, STANDARD DETAILS FOR THIS PROJECT ARE R.I. STANDARD DETAILS, 1998 EDITION, WITH ALL REVISIONS.

STATE OF RHODE ISLAND



DEPARTMENT OF TRANSPORTATION

PLAN, PROFILE AND SECTIONS OF PROPOSED
STATE HIGHWAY
IMPROVEMENTS TO I-95
ACCELERATED BRIDGE CONSTRUCTION (ABC) OF
BRIDGE NO. 653 SUPERSTRUCTURE REPLACEMENT
I-95 NB/SB OVER OXFORD STREET
VOLUME 1 OF 2 - HIGHWAY PLANS

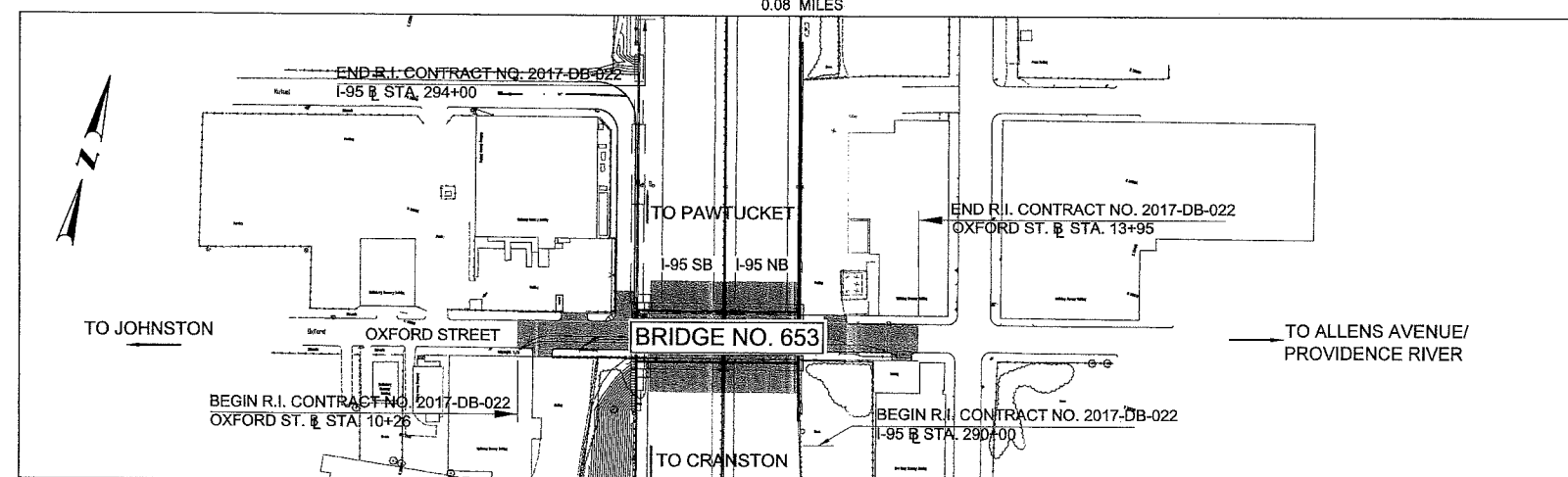
CITY OF PROVIDENCE
COUNTY OF PROVIDENCE

R.I. CONTRACT NO. 2017-DB-022 F.A. PROJECT NO. BRO-0653 (001)

PAVEMENT STRUCTURE (FDC)
2" MODIFIED CLASS 9.5 HMA FOR BRIDGE DECKS
10" CLASS 19 HMA
12" (MINIMUM) GRAVEL BORROW SUBBASE COURSE

PAVEMENT STRUCTURE (MMO)
2" MICRO-MILLING
2" MODIFIED CLASS 12.5 HMA

0.08 MILES



LAYOUT PLAN
SCALE: 1" = 80'

SCALES OF DRAWINGS

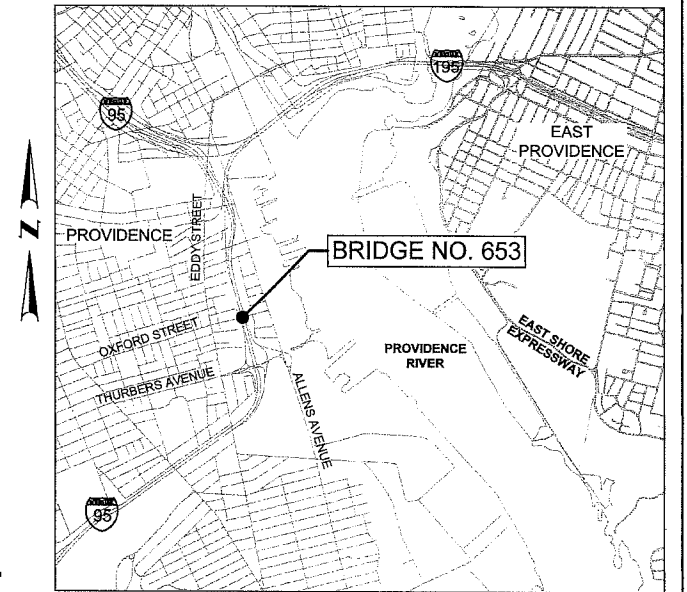
Plans	1 inch = 20 & 40 feet
Profiles	1 inch = 20 feet Horizontal
Profiles	1 inch = 4 feet Vertical
Cross Sections	1 inch = 4 feet Horizontal
Cross Sections	1 inch = 4 feet Vertical

BASE OF LEVELS
NGVD 29

Louis Berger
166 VALLEY STREET, BUILDING 5
PROVIDENCE, RI 02909
TEL 401 521 5980
WWW.LOUIBERGER.COM

Contract Number 2017-DB-022
Number of Sheet 1
Total Sheets 26

R-2	FED. ROAD DIV. NO.	STATE	FEDERAL AID PROJECT NO.	FISCAL YEAR	SHEET NO.	TOTAL SHEETS
		RI		2017	1	26



LOCATION MAP
SCALE: 1"=2,000'

DESIGN DESIGNATION

	I-95	OXFORD STREET
AADT (2017)	151,000 V.P.D.	AADT (2017) XX,XXXV.P.D.
AADT (2037)	184,200 V.P.D.	AADT (2037) XX,XXX V.P.D.
D	50%	D XXX%
K	9%	K XX%
T	6%	T X%
DDHV	8,290 V.P.H.	DDHV X,XXX V.P.H.
DHV	16,580 V.P.H.	DHV X,XXX V.P.H.
DESIGN SPEED	55 M.P.H.	DESIGN SPEED 30 M.P.H.

HURRICANE EVACUATION ROUTE

This project includes work on a designated Hurricane Evacuation and Diversionary Route as follows:
- Intersection of
Refer to General Note 18 on Sheet

30% SUBMISSION HIGHWAY PLANS

PHINEAS N. FOWLER
No. 9788
REGISTERED PROFESSIONAL ENGINEER CIVIL
5/25/17

LYNN BETH FARRINGTON
No. 11036
REGISTERED PROFESSIONAL ENGINEER CIVIL
5/26/17

R.I. DEPARTMENT OF TRANSPORTATION

APPROVED
David W. Felt 5/25/17
ADMINISTRATOR, PROJECT MANAGEMENT DATE

APPROVED
Robert Roach 5/26/17
CHIEF ENGINEER OF INFRASTRUCTURE DATE

APPROVED
[Signature] 5/20/15
DIRECTOR DATE

DEPARTMENT OF TRANSPORTATION
FEDERAL HIGHWAY ADMINISTRATION

APPROVED
DIVISION ADMINISTRATOR DATE

ADDENDUM NO. 3

Plans: VOLUME 2

ADDENDUM NO. 3

INDEX

BRIDGE PLAN SET I-95 NB/SB OVER OXFORD STREET BRIDGE NO. 653 SUPERSTRUCTURE REPLACEMENT

SHEET NO.	DESCRIPTION
VOLUME 1	
HIGHWAY PLANS	
FOR INDEX SEE "HIGHWAY PLANS VOLUME 1"	
VOLUME 2	
BRIDGE NO. 653 - BRIDGE PLANS	
1	BRIDGE COVER
2	BRIDGE ABBREVIATIONS
3	PROFILES
4	GENERAL NOTES SHEET 1 OF 3
5	GENERAL NOTES SHEET 2 OF 3
6	GENERAL NOTES SHEET 3 OF 3
6A	BRIDGE KEY PLAN
7	GENERAL PLAN AND ELEVATION
8	TYPICAL BRIDGE SECTION AND APPROACH SECTION
9	CONSTRUCTION STAGING AND DEMOLITION DETAILS SHEET 1 OF 6
10	CONSTRUCTION STAGING AND DEMOLITION DETAILS SHEET 2 OF 6
11	CONSTRUCTION STAGING AND DEMOLITION DETAILS SHEET 3 OF 6
12	CONSTRUCTION STAGING AND DEMOLITION DETAILS SHEET 4 OF 6
13	CONSTRUCTION STAGING AND DEMOLITION DETAILS SHEET 5 OF 6
14	CONSTRUCTION STAGING AND DEMOLITION DETAILS SHEET 6 OF 6
15	REHABILITATION DETAILS
16	NORTH ABUTMENT PLAN AND ELEVATION
17	ABUTMENT DETAILS
18	WALLS SHEET 1 OF 2
19	WALLS SHEET 2 OF 2
19A	EAST WALLS AND BARRIER - DEMOLITION
19B	EAST WALLS AND BARRIER - PROPOSED
20	FRAMING PLAN
21	TYPICAL DECK SECTION AND STEEL DETAILS
22	DIAPHRAGM DETAILS
23	DECK PLAN
24	DECK DETAILS
25	SUPERSTRUCTURE DETAILS
25A	END POST DETAILS FOR TL-5 RAIL

STATE OF RHODE ISLAND



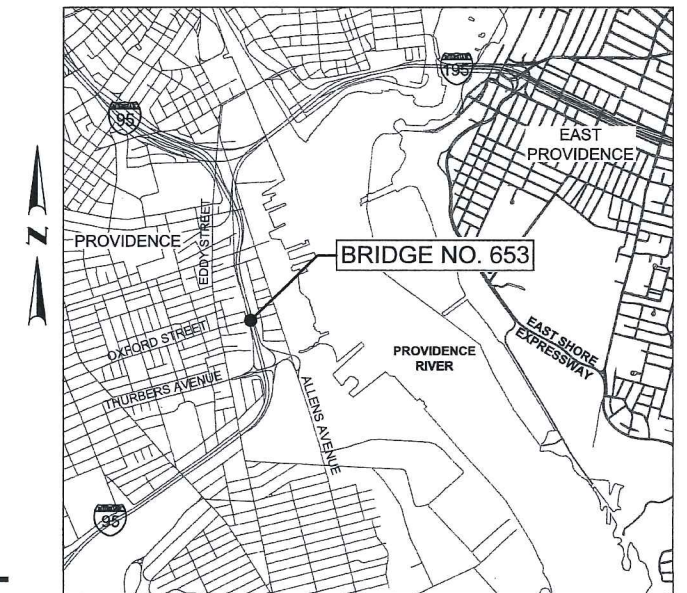
DEPARTMENT OF TRANSPORTATION

PLAN, PROFILE AND SECTIONS OF PROPOSED STATE HIGHWAY IMPROVEMENTS TO I-95 ACCELERATED BRIDGE CONSTRUCTION (ABC) OF BRIDGE NO. 653 SUPERSTRUCTURE REPLACEMENT I-95 NB/SB OVER OXFORD STREET VOLUME 2 OF 2 - BRIDGE PLANS

CITY OF PROVIDENCE
COUNTY OF PROVIDENCE

R.I. CONTRACT NO. 2017-DB-022 F.A. PROJECT NO. BRO-0653 (001)

R-2	FED. ROAD DIV. NO.	STATE	FEDERAL AID PROJECT NO.	FISCAL YEAR	SHEET NO.	TOTAL SHEETS
		RI		2017	1	25



LOCATION MAP
SCALE: 1"=2,000'

DESIGN DESIGNATION

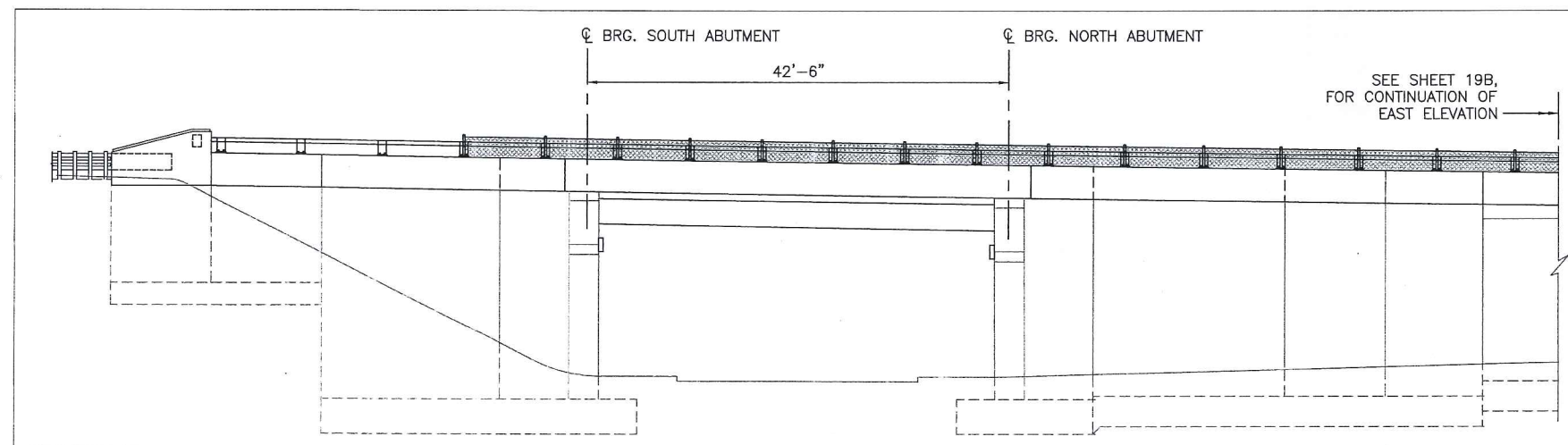
I-95		OXFORD STREET	
AADT (2016)	143,545 V.P.D.	AADT (2016)	XX,XXX V.P.D.
AADT (2036)	174,194 V.P.D.	AADT (2036)	XX,XXX V.P.D.
D	50%	D	XXX%
K	9%	K	XX%
T	6%	T	X%
DDHV	7,839 V.P.H.	DDHV	X,XXX V.P.H.
DHV	15,677 V.P.H.	DHV	X,XXX V.P.H.
DESIGN SPEED	55 M.P.H.	DESIGN SPEED	30 M.P.H.

HURRICANE EVACUATION ROUTE

This project includes work on a designated Hurricane Evacuation and Diversionary Route as follows:
- Intersection of
Refer to General Note 18 on Sheet

R.I. STANDARD SPECIFICATIONS AND STANDARD DETAILS

SPECIFICATIONS TO GOVERN THIS PROJECT ARE THE R.I. STANDARD SPECIFICATIONS FOR ROAD AND BRIDGE CONSTRUCTION, AMENDED AUGUST 2013, WITH ALL REVISIONS AND THE STATE AND FEDERAL SPECIAL PROVISIONS INCLUDED IN THE CONTRACT DOCUMENTS. STANDARD DETAILS FOR THIS PROJECT ARE R.I. STANDARD DETAILS, 1998 EDITION, WITH ALL REVISIONS.

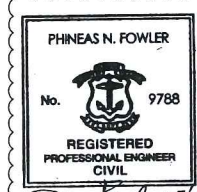


ELEVATION
SCALE: 1/8" = 1'-0"
SCALES OF DRAWINGS
AS SHOWN

BASE OF LEVELS
NGVD 29

Louis Berger
166 VALLEY STREET, BUILDING 5
PROVIDENCE, RI 02909
TEL 401 521 5980
WWW.LOUISBERGER.COM

30% SUBMISSION BRIDGE PLANS



R.I. DEPARTMENT OF TRANSPORTATION

APPROVED
David W. FSL 5/25/17
ADMINISTRATOR, PROJECT MANAGEMENT DATE

APPROVED
Robert 5/26/17
CHIEF ENGINEER OF INFRASTRUCTURE DATE

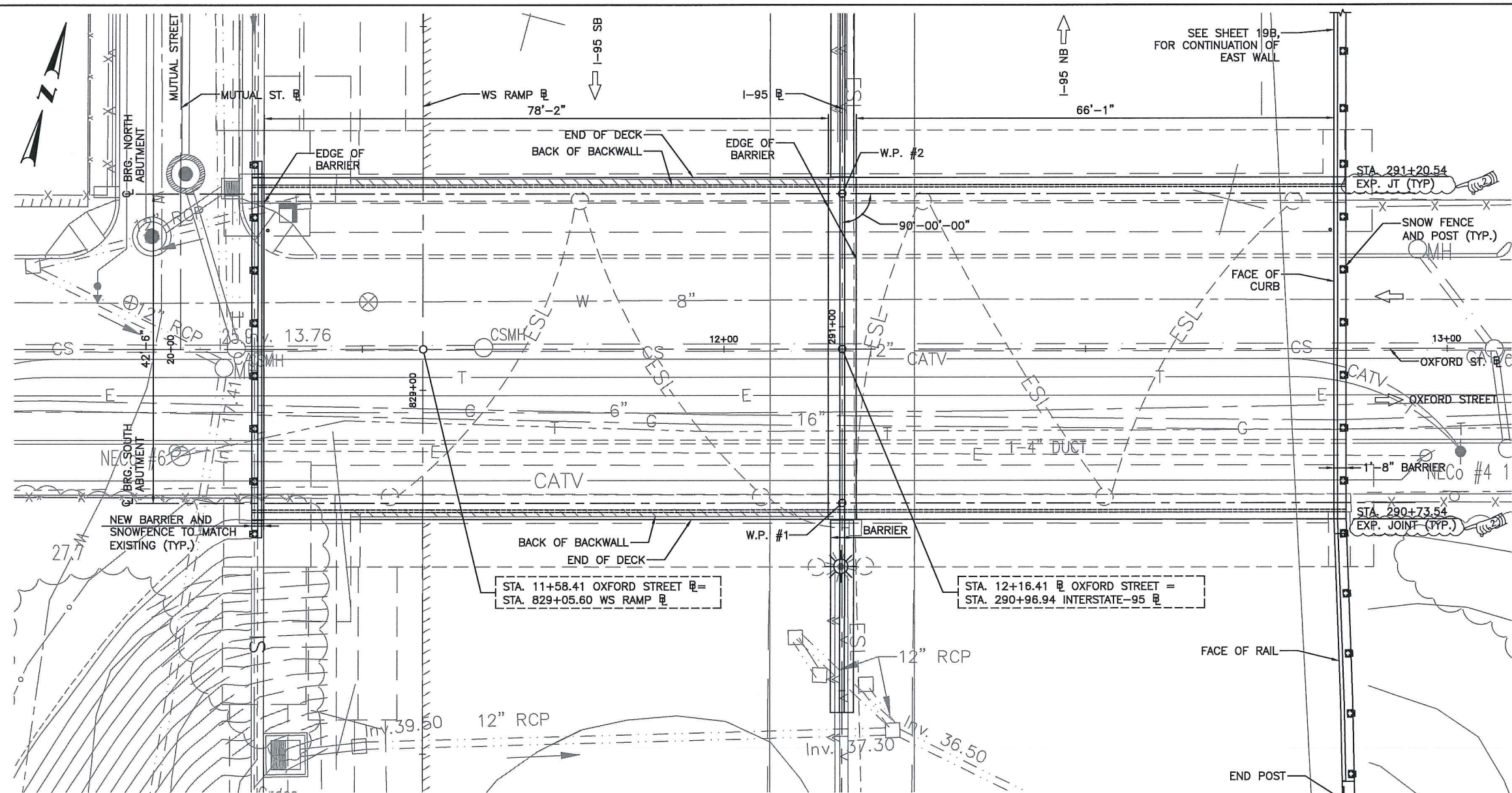
APPROVED
[Signature] 5/26/17
DIRECTOR DATE

DEPARTMENT OF TRANSPORTATION
FEDERAL HIGHWAY ADMINISTRATION

APPROVED
DIVISION ADMINISTRATOR DATE

Contract Number 2017-DB-022
Number of Sheet 1
Total Sheets 25

ADDENDUM NO. 3



STA. 11+58.41 OXFORD STREET =
STA. 829+05.60 WS RAMP

STA. 12+16.41 OXFORD STREET =
STA. 290+96.94 INTERSTATE-95

GENERAL PLAN
SCALE: 1/8"=1'-0"

LEGEND:

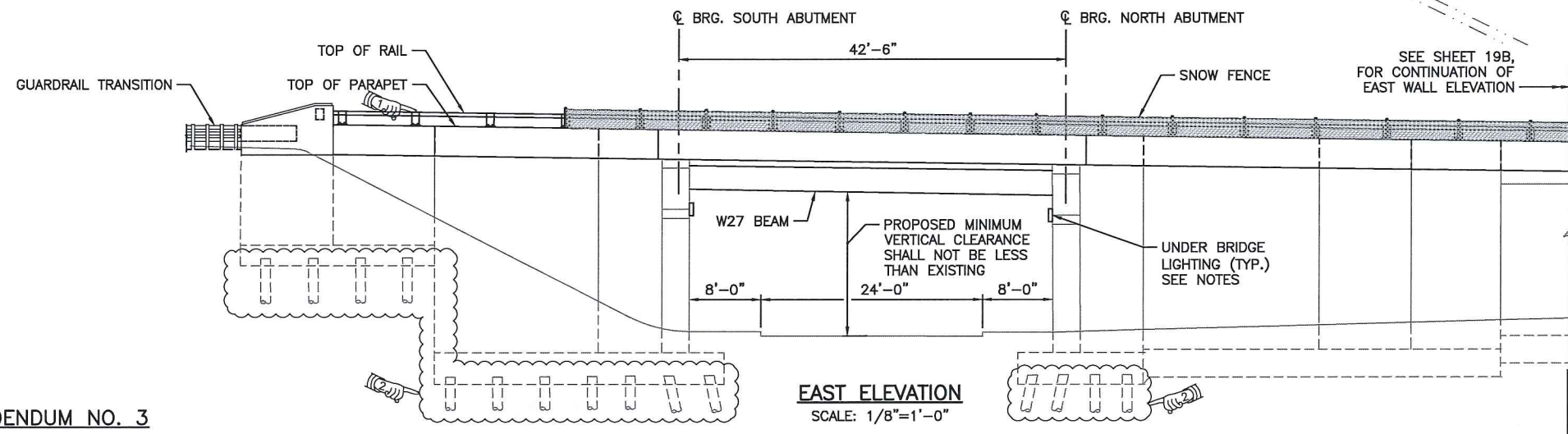
ELECTRIC DUCT	---	E
SANITARY SEWER	---	S
DRAINAGE	---	D
WATER MAIN	---	W
GAS MAIN	---	G
OVERHEAD WIRE	---	OHW
CATCH BASIN	□	CB
DRAINAGE MANHOLE	○	DMH
SEWER MANHOLE	○	SMH
UTILITY POLE	⊕	UP
WATER GATE	⊕	WG
DIRECTION OF TRAVEL	→	

WORKING POINTS

W.P. #	STATION	NORTHING	EASTING
W.P. 1	STA. 290+75.79	262445.2319	354259.0778
W.P. 2	STA. 291+18.29	262487.2334	354248.0821

- NOTES:**
- THE EXISTING LIGHTING UNDER/ON THE BRIDGE SHALL BE REMOVED AND REPLACED PER RIDOT STANDARDS.
 - FOR END POST AND APPROACH GUARDRAIL DETAILS, SEE RIDOT STANDARD DRAWING 9.4.1.

ENTIRE SHEET REPLACED BY
ADDENDUM NO. 2



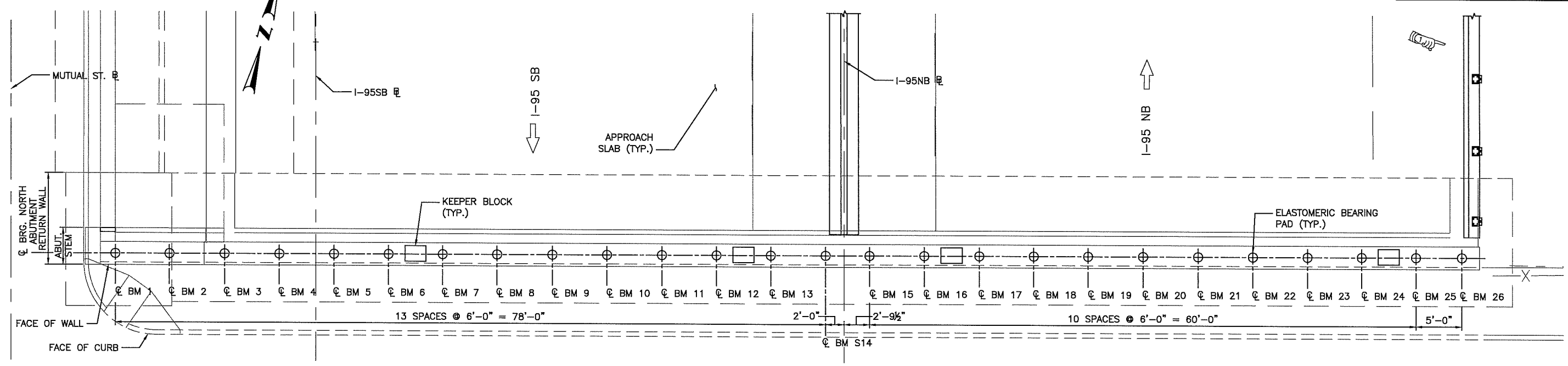
EAST ELEVATION
SCALE: 1/8"=1'-0"

ADDENDUM NO. 3

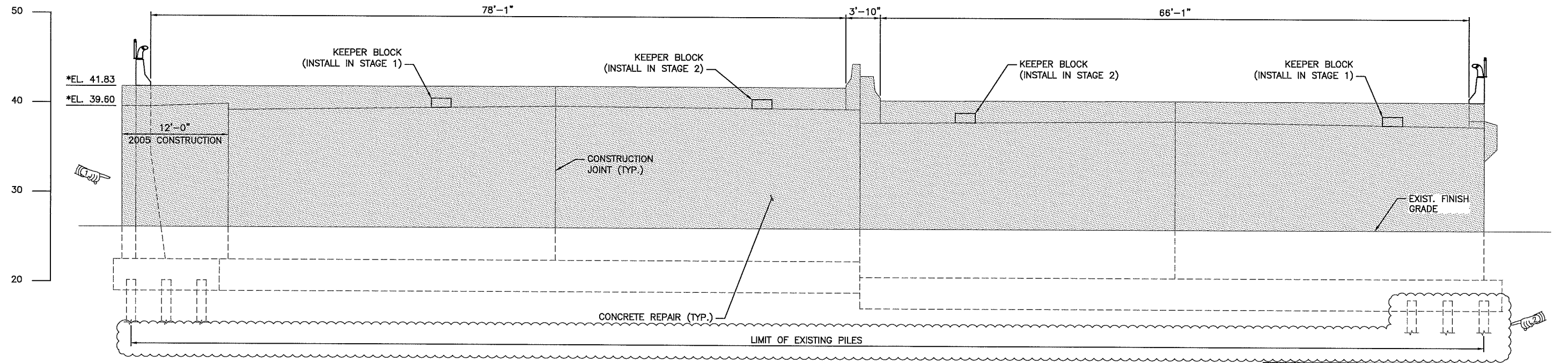
Louis Berger
166 VALLEY STREET, BUILDING 5
PROVIDENCE, RI 02909
TEL 401 521 5980
WWW.LOUISSBERGER.COM

REVISIONS			RHODE ISLAND DEPARTMENT OF TRANSPORTATION	
NO.	DATE	BY		
1	5/17/17	PNF		
2	8/2/17	PNF		
			IMPROVEMENTS TO I-95 REPLACEMENT OF BRIDGE 653 OVER OXFORD STREET PROVIDENCE, RHODE ISLAND	
			GENERAL PLAN AND ELEVATION	
			CHECKED BY	DATE 4/28/17 SCALE 1"=10'

FED. ROAD DIST. NO.	STATE	FEDERAL AID PROJECT NO.	FISCAL YEAR	SHEET NO.	TOTAL SHEETS
	RI		2017	16	25



NORTH ABUTMENT PLAN
SCALE: 3/16"=1'-0"



NORTH ABUTMENT ELEVATION
(SOUTH ABUTMENT SIMILAR)
SCALE: 3/16"=1'-0"

LEGEND:

- NEW CONCRETE AREA
- LIMITS OF STRUCTURE TO BE INSPECTED AND EVALUATED FOR REPAIRS. THE DESIGN BUILD TEAM SHALL INSPECT, IDENTIFY ON PLANS THE CONCRETE AREAS REQUIRING REPAIR AND PROVIDE REPAIR DETAILS FOR RIDOT APPROVAL
- * ELEVATIONS AND DIMENSIONS TAKEN FROM EXISTING DRAWINGS AND SHALL BE VERIFIED IN THE FIELD

NOTES:

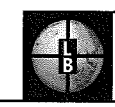
1. FOR ABUTMENT SECTIONS AND KEEPER BLOCK DETAILS, SEE SHEET 17.
2. FOR RETURN WALL ELEVATIONS, SEE SHEET 18.
3. FOR BEARING LAYOUT AND DETAILS, SEE SHEET 25.

REVISIONS		
NO.	DATE	BY
1	5/17/17	PNF
2	6/2/17	PNF

RHODE ISLAND
DEPARTMENT OF TRANSPORTATION

IMPROVEMENTS TO I-95
REPLACEMENT OF BRIDGE 653
OVER OXFORD STREET
PROVIDENCE, RHODE ISLAND

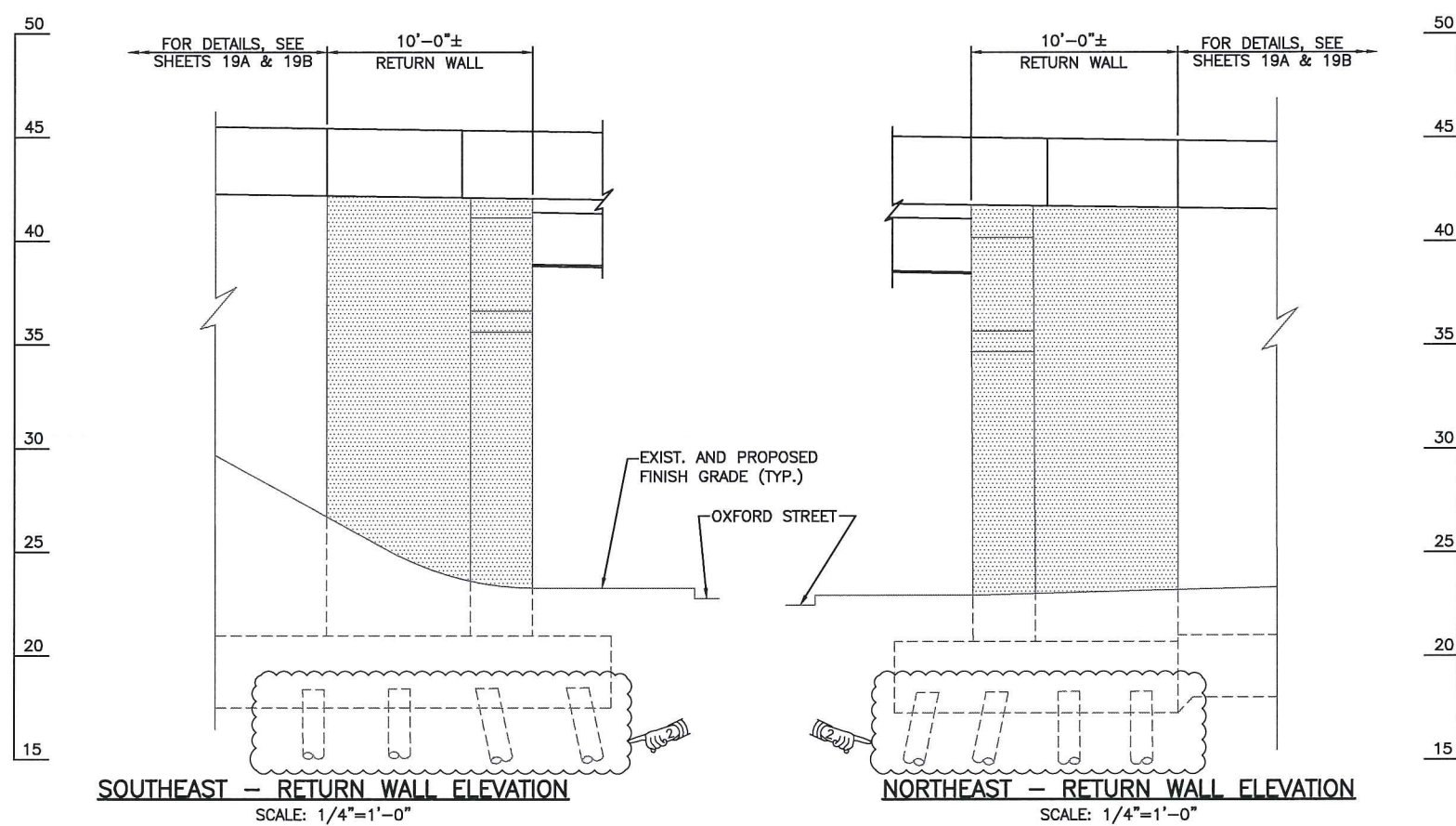
**NORTH ABUTMENT
PLAN AND ELEVATION**




Louis Berger
166 VALLEY STREET, BUILDING 5
PROVIDENCE, RI 02909
TEL 401 521 5980
WWW.LOUIISBERGER.COM

CHECKED BY PNF DATE 4/28/17 SCALE 1"=10'

ADDENDUM NO. 3




LEGEND:

 LIMITS OF STRUCTURE TO BE INSPECTED AND EVALUATED FOR REPAIRS. THE DESIGN BUILD TEAM SHALL INSPECT, IDENTIFY ON PLANS THE CONCRETE AREAS REQUIRING REPAIR AND PROVIDE REPAIR DETAILS FOR RIDOT APPROVAL.

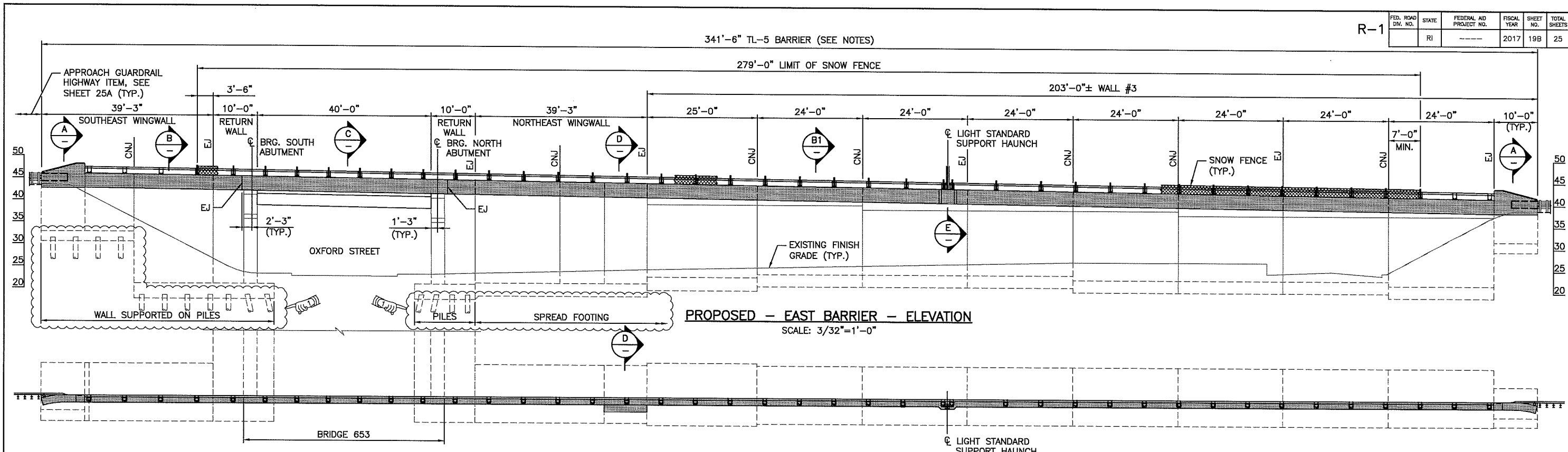
 ENTIRE SHEET REPLACED BY ADDENDUM NO. 2

REVISIONS			RHODE ISLAND DEPARTMENT OF TRANSPORTATION
NO.	DATE	BY	
1	5/17/17	PNF	IMPROVEMENTS TO I-95 REPLACEMENT OF BRIDGE 653 OVER OXFORD STREET PROVIDENCE, RHODE ISLAND
2	8/2/17	PNF	
			WALLS SHEET 1 OF 2
CHECKED BY PNF DATE 4/28/17 SCALE			

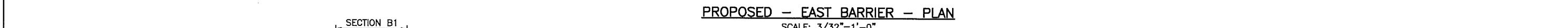
 Louis Berger
166 VALLEY STREET, BUILDING 5
PROVIDENCE, RI 02909
TEL 401 521 5960
WWW.LOUISSBERGER.COM

ADDENDUM NO. 3

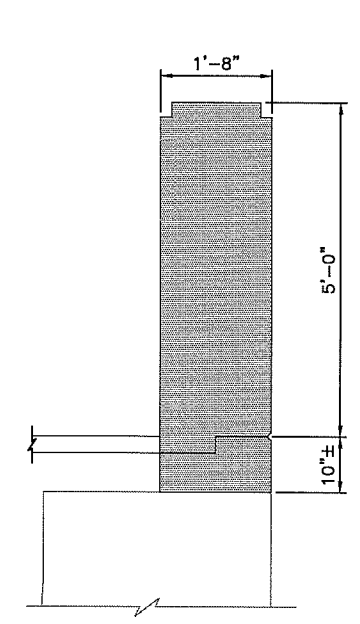
FED. ROAD DIV. NO.	STATE	FEDERAL AID PROJECT NO.	FISCAL YEAR	SHEET NO.	TOTAL SHEETS
	RI		2017	19B	25



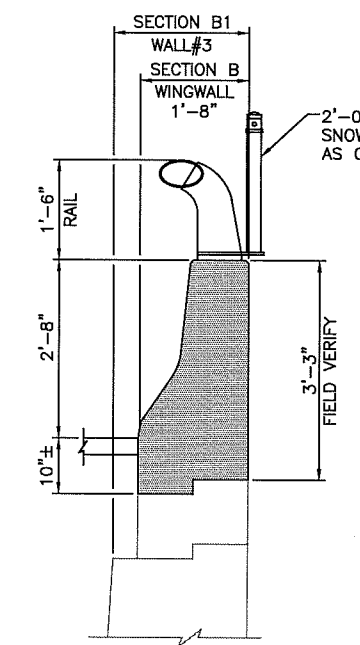
PROPOSED - EAST BARRIER - ELEVATION
SCALE: 3/32"=1'-0"



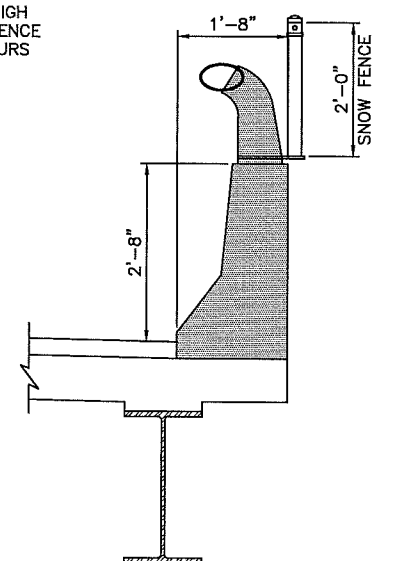
PROPOSED - EAST BARRIER - PLAN
SCALE: 3/32"=1'-0"



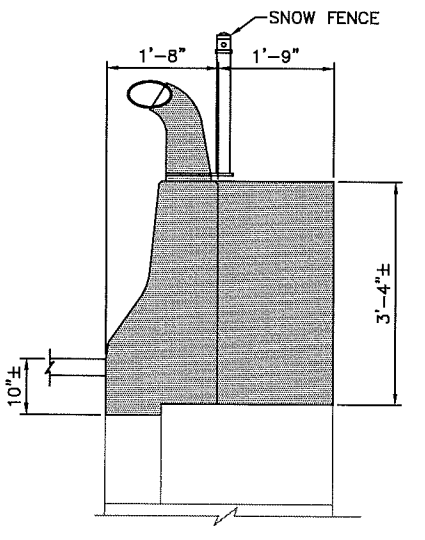
SECTION A
SCALE: 3/4"=1'-0"



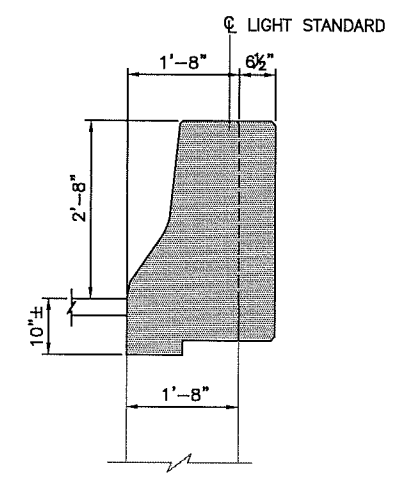
SECTION B
(SECTION B1 AS NOTED)
SCALE: 3/4"=1'-0"



SECTION C
SCALE: 3/4"=1'-0"



SECTION D
SCALE: 3/4"=1'-0"



SECTION E
SCALE: 3/4"=1'-0"

LEGEND:
EJ = EXPANSION JOINT
CNJ = CONTRACTION JOINT

- NOTES:**
- FOR BARRIER, RAILING AND SNOW FENCE DETAILS, SEE SHEET 25.
 - FOR LIGHTING DETAILS, SEE HIGHWAY PLANS.
 - PROVIDE EXPANSION JOINTS AND CONTRACTION JOINTS TO MATCH EXISTING BRIDGE AND WALLS.
 - THE EXISTING EAST BARRIER FROM THE SOUTHEAST END POST TO THE NORTHEAST END POST AS SHOWN ON THE PLANS TO BE REPLACED WITH TL-5 BARRIER. THE DESIGN BUILD TEAM IS RESPONSIBLE FOR EVALUATING THE TL-5 BARRIER LOADING ON THE EXISTING WALLS AND MAKING ANY REQUIRED MODIFICATIONS TO THE STRUCTURE.

REVISIONS		
NO.	DATE	BY
1	8/2/17	PNF

RHODE ISLAND
DEPARTMENT OF TRANSPORTATION

IMPROVEMENTS TO I-95
REPLACEMENT OF BRIDGE 653
OVER OXFORD STREET
PROVIDENCE, RHODE ISLAND

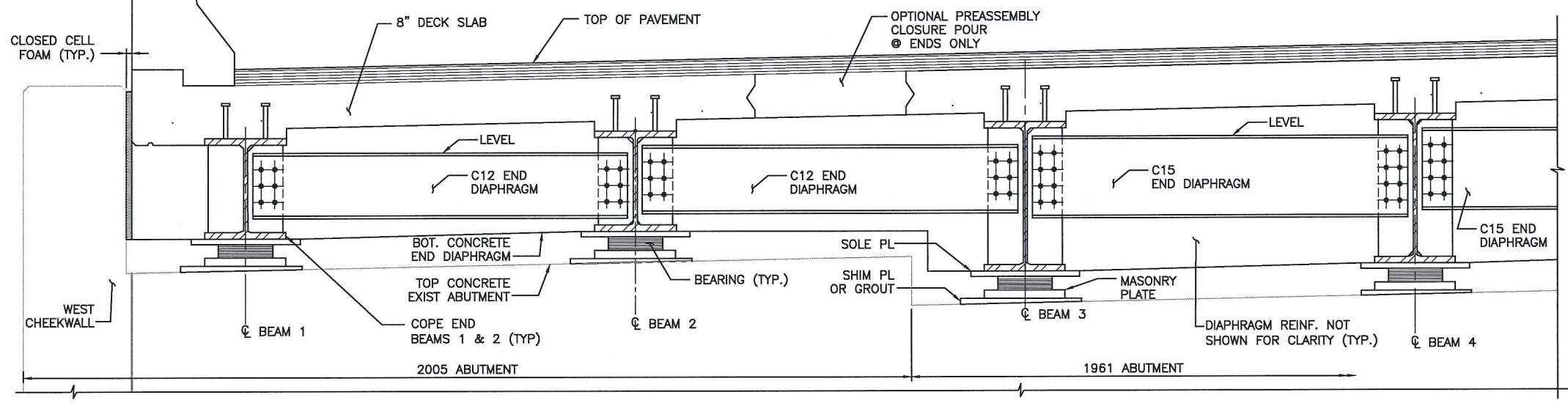
**EAST WALLS AND
BARRIER-PROPOSED**

CHECKED BY PNF DATE 5/17/17 SCALE

SHEET ADDED BY
ADDENDUM NO. 2

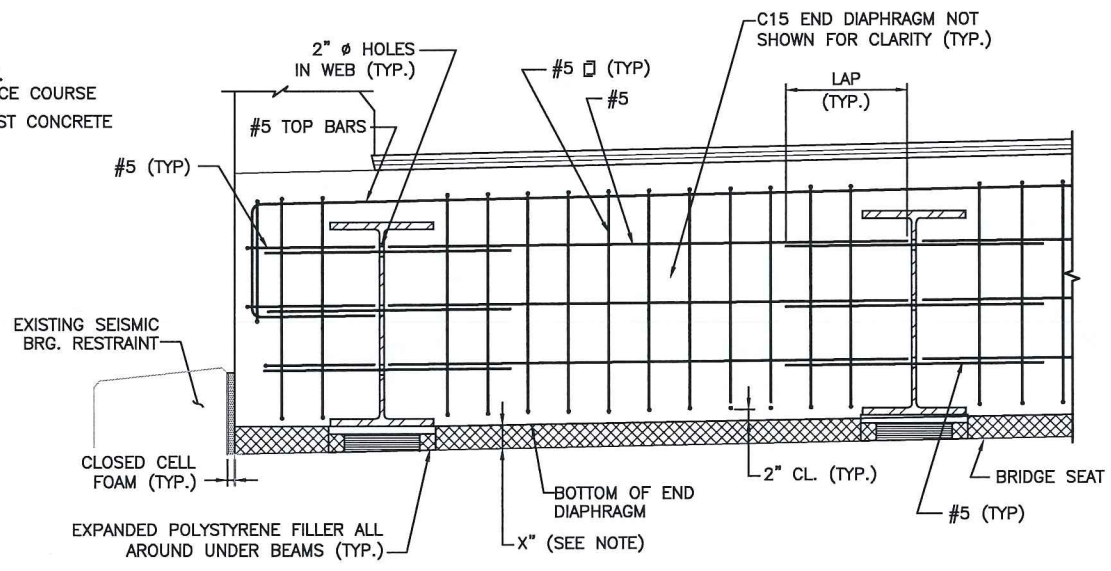
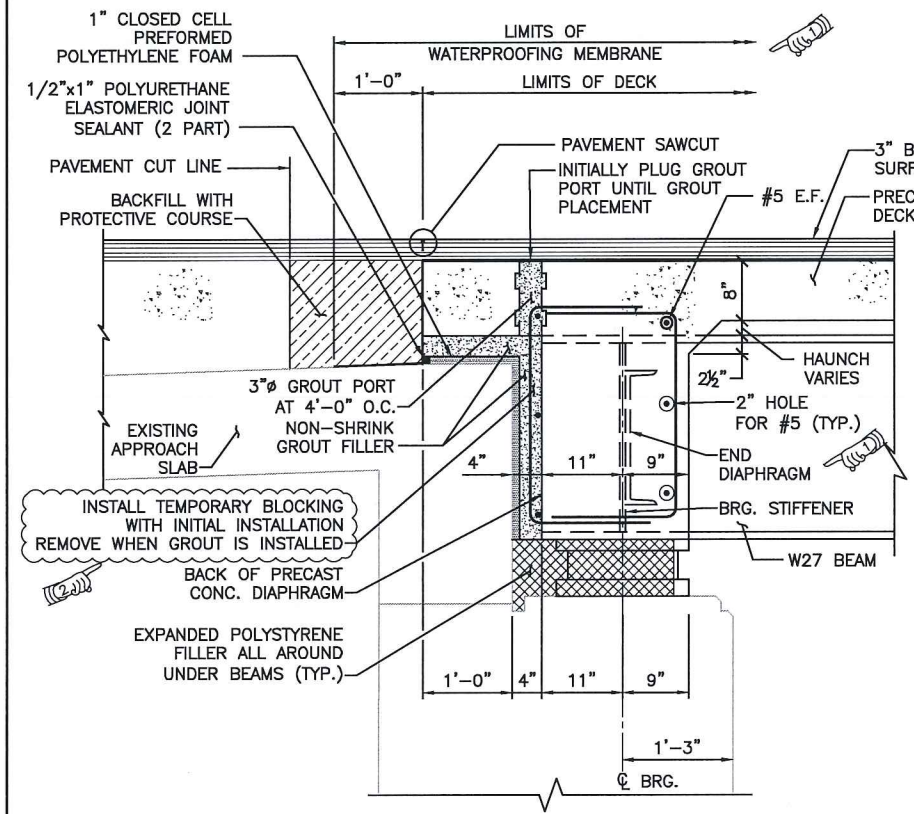
Louis Berger
166 VALLEY STREET, BUILDING 5
PROVIDENCE, RI 02909
TEL. 401.521.5880
WWW.LOUISBERGER.COM

ADDENDUM NO. 3



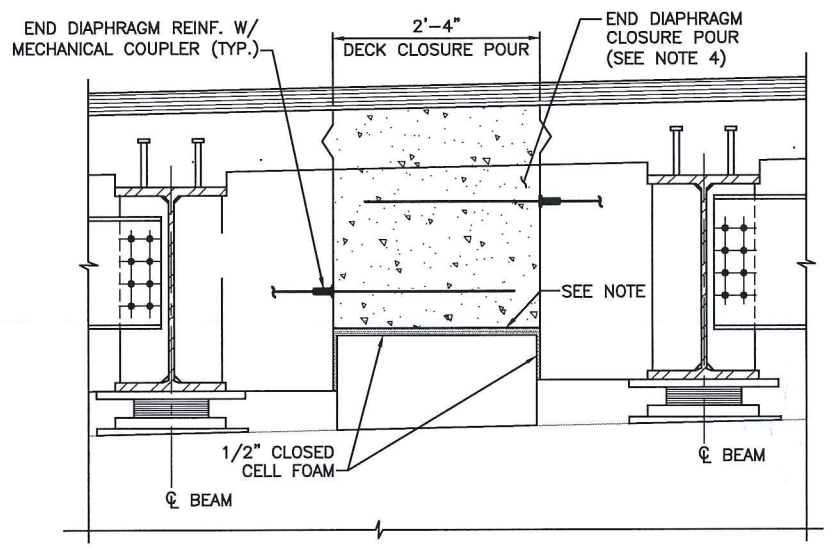
- NOTES:**
1. THE END DIAPHRAGMS SHALL FOLLOW THE CROSS SLOPE OF THE ROADWAY.
 2. LOCATIONS OF HOLES IN CONNECTION PLATES SHALL BE DETERMINED BY THE FABRICATOR.
 3. TOP OF INTERMEDIATE KEEPER BLOCK SHALL BE TROWELED SMOOTH PARALLEL TO PROFILE GRADE.
 4. SEE FRAMING PLAN FOR LOCATION OF END DIAPHRAGMS. OMIT THE C15 END DIAPHRAGMS WHERE STAGE CONSTRUCTION IS PRESENT AND PROVIDE ADDITIONAL REINFORCEMENT THAT SHALL BE SPLICED WITH DOWEL BAR SPLICERS WITHIN THE END DIAPHRAGM CLOSURE POUR.

(SW ABUTMENT CORNER SIMILAR)
END DIAPHRAGM DETAILS AT NW ABUTMENT CORNER
 SCALE: 1"=1'-0"



NOTE:
 CONTRACTOR MAY USE EXPANDED POLYSTYRENE FILLER OR A REMOVABLE FORM TO FORM THE BOTTOM OF THE NON-SHRINK GROUT FILLER BEHIND THE END DIAPHRAGM.

END DIAPHRAGM ELEVATION AT SE CORNER
 (NORTHEAST ABUTMENT CORNER SIMILAR)
 SCALE: 1"=1'-0"



TYPICAL END DIAPHRAGM/CLOSURE POUR DETAIL
 SCALE: 1"=1'-0"

NOTE:
 TOP OF INTERMEDIATE KEEPER BLOCK SHALL BE TROWELED SMOOTH PARALLEL TO PROFILE GRADE.

END DIAPHRAGM SECTION
 SCALE: 1"=1'-0"

REVISIONS			RHODE ISLAND DEPARTMENT OF TRANSPORTATION
NO.	DATE	BY	
1	5/17/17	PNF	IMPROVEMENTS TO I-95 REPLACEMENT OF BRIDGE 653 OVER OXFORD STREET PROVIDENCE, RHODE ISLAND
2	8/2/17	PNF	
			DIAPHRAGM DETAILS
			CHECKED BY PNF DATE 4/28/17 SCALE

Louis Berger
 166 VALLEY STREET, BUILDING 5
 PROVIDENCE, RI 02909
 TEL 401 521 5980
 WWW.LOUISBERGER.COM