

November 6, 2020

STATE OF RHODE ISLAND AND PROVIDENCE PLANTATION
DEPARTMENT OF ADMINISTRATION

DIVISION OF PURCHASES BID NO. 7609825

RHODE ISLAND DEPARTMENT OF TRANSPORTATION

RHODE ISLAND CONTRACT NO.2021-CH-007

FEDERAL-AID PROJECT NO. FAP Nos: STP-HSIP(090)

HSIP - Intersection Safety - Rt 37 & Natick Ave

Natick Avenue to I-295 NB Off Ramp

CITY/TOWN OF Cranston

COUNTY OF PROVIDENCE

NOTICE TO PROSPECTIVE BIDDERS

ADDENDUM NO. 1 Prospective bidders and all concerned are hereby notified of the following changes in the Plans, Specifications, Proposal and Distribution of Quantities for this contract. These changes shall be incorporated in the Plans, Specifications, Proposal and Distribution of Quantities, and shall become an integral part of the Contract Documents.

A. Contract Documents

1. Federal Wage Rates

Delete the Federal Wage Rate pages provided on the Advertising CD in their entirety and replace them with the Federal Wage Rate (dated 11-6-2020) pages attached to this Addendum No. 1. The Federal Wage Rates have been updated

B. General Provisions - Contract Specific

1. Stormwater Pollution Prevention Plan

Delete page CS-18 in its entirety and replace it with revised page CS-18 (R-1) attached to this Addendum No. 1. The owner signature has been updated.

C. Specification Change/Addition

1. Special Provision Index

Insert page JS-ii attached to this Addendum No. 1. Specification 926.9903 and Item 926.9904 has been added.

2. Handling, Hauling, Stockpiling, Management, and Disposal of Contaminated Soils

Delete page JS-13 in its entirety and replace it with revised page JS-13 (R-1) attached to this Addendum No. 1. The reference to the Compost Filter Sock has been updated.

3. Four Inch Frame and Grate

Delete page JS-41 in its entirety and replace it with revised page JS-41 (R-1) attached to this Addendum No. 1. The method of measurement and basis of payment have been updated.

4. Flashing Sign Assembly

Delete page JS-75 in its entirety and replace it with revised page JS-75 (R-1) attached to this Addendum No. 1. The Materials section has been updated.

5. Barrier - Left in Place

Insert pages JS-78 and JS-79 attached to this Addendum No. 1. The specification has been added.

D. Distribution of Quantities

1. Table of Contents - Distribution of Quantities

Delete pages Index 1 through Index 4 in their entirety and replace them with revised pages Index 1 (R-1) through Index 4 (R-1) attached to this Addendum No. 1. The index has been updated.

2. 926.9901 - Anchored Precast Barrier for Temporary Traffic Control (MASH TL-3)

Delete page 26 in its entirety and replace it with revised page 26 (R-1) attached to this Addendum No. 1. Item Code 926.9901 has been updated.

3. Item Codes 926.9903 and 932.0100

Delete page 45 in its entirety and replace it with revised page 45 (R-1) attached to this Addendum No. 1. Item Code 926.9903 and 932.0100 have been added.

4. Item Code 932.0210

Insert page 46 attached to this Addendum No. 1. Item Code 932.0210 has been added.

E. Drawings/Plans - Change/Addition

1. Typical Section No. 1

Delete sheet 7 in its entirety and replace it with revised sheet 7 (R-1) attached to this Addendum No. 1. The Title has been updated.

2. Typical Section No. 2

Delete sheet 8 in its entirety and replace it with revised sheet 8 (R-1) attached to this Addendum No. 1. The Title has been updated.

3. General Plan No. 1

Delete sheet 9 in its entirety and replace it with revised sheet 9 (R-1) attached to this Addendum No. 1. The plan has been updated.

4. General Plan No. 2

Delete sheet 10 in its entirety and replace it with revised sheet 10 (R-1) attached to this Addendum No. 1. The plan has been updated.

5. General Plan No. 3
Delete sheet 11 in its entirety and replace it with revised sheet 11 (R-1) attached to this Addendum No. 1. The plan has been updated.
6. General Plan No. 4
Delete sheet 12 in its entirety and replace it with revised sheet 12 (R-1) attached to this Addendum No. 1. The plan has been updated.
7. General Plan No. 5
Delete sheet 13 in its entirety and replace it with revised sheet 13 (R-1) attached to this Addendum No. 1. The plan has been updated.
8. Drainage & Utility Plan No. 1
Delete sheet 19 in its entirety and replace it with revised sheet 19 (R-1) attached to this Addendum No. 1. The plan has been updated.
9. Drainage & Utility Plan No. 2
Delete sheet 20 in its entirety and replace it with revised sheet 20 (R-1) attached to this Addendum No. 1. The plan has been updated.
10. Drainage & Utility Plan No. 4
Delete sheet 22 in its entirety and replace it with revised sheet 22 (R-1) attached to this Addendum No. 1. The plan has been updated.
11. Profile No. 4
Delete sheet 31 in its entirety and replace it with revised sheet 31 (R-1) attached to this Addendum No. 1. The plan has been updated.
12. Traffic Signal Plan
Delete sheet 48 in its entirety and replace it with revised sheet 48 (R-1) attached to this Addendum No. 1. The plan has been updated.
13. Traffic Control Plan No. 5
Delete sheet 53 in its entirety and replace it with revised sheet 53 (R-1) attached to this Addendum No. 1. The plan has been updated.
14. Traffic Control Plan No. 6
Delete sheet 54 in its entirety and replace it with revised sheet 54 (R-1) attached to this Addendum No. 1. The plan has been updated.

Lori A. Fisette

RI Department of Transportation
Administrator, Division of Project Management

"General Decision Number: RI20200001 11/06/2020

Superseded General Decision Number: RI20190001

State: Rhode Island

Construction Types: Building, Heavy (Heavy and Marine) and Highway

Counties: Rhode Island Statewide.

BUILDING CONSTRUCTION PROJECTS (does not include residential construction consisting of single family homes and apartments up to and including 4 stories) HEAVY, HIGHWAY AND MARINE CONSTRUCTION PROJECTS

Note: Under Executive Order (EO) 13658, an hourly minimum wage of \$10.80 for calendar year 2020 applies to all contracts subject to the Davis-Bacon Act for which the contract is awarded (and any solicitation was issued) on or after January 1, 2015. If this contract is covered by the EO, the contractor must pay all workers in any classification listed on this wage determination at least \$10.80 per hour (or the applicable wage rate listed on this wage determination, if it is higher) for all hours spent performing on the contract in calendar year 2020. If this contract is covered by the EO and a classification considered necessary for performance of work on the contract does not appear on this wage determination, the contractor must pay workers in that classification at least the wage rate determined through the conformance process set forth in 29 CFR 5.5(a)(1)(ii) (or the EO minimum wage rate, if it is higher than the conformed wage rate). The EO minimum wage rate will be adjusted annually. Please note that this EO applies to the above-mentioned types of contracts entered into by the federal government that are subject to the Davis-Bacon Act itself, but it does not apply to contracts subject only to the Davis-Bacon Related Acts, including those set forth at 29 CFR 5.1(a)(2)-(60). Additional information on contractor requirements and worker protections under the EO is available at www.dol.gov/whd/govcontracts.

Modification Number	Publication Date
0	01/03/2020
1	01/24/2020
2	02/21/2020
3	03/06/2020
4	03/13/2020
5	05/01/2020
6	05/22/2020
7	06/05/2020
8	06/19/2020
9	07/24/2020
10	08/14/2020
11	10/02/2020
12	11/06/2020

ASBE0006-006 12/01/2019

Rates Fringes

HAZARDOUS MATERIAL HANDLER
(Includes preparation,

wetting, stripping, removal
scrapping, vacuuming, bagging
& disposing of all insulation
materials, whether they
contain asbestos or not, from
mechanical systems).....\$ 36.60 22.40

ASBE0006-008 09/01/2019

Rates Fringes

Asbestos Worker/Insulator
Includes application of
all insulating materials,
protective coverings,
coatings & finishes to all
types of mechanical systems.\$ 43.60 29.90

BOIL0029-001 01/01/2017

Rates Fringes

BOILERMAKER.....\$ 42.42 24.92

BRRIO003-001 06/01/2020

Rates Fringes

Bricklayer, Stonemason,
Pointer, Caulker & Cleaner.....\$ 42.55 28.02

BRRIO003-002 03/01/2020

Rates Fringes

Marble Setter, Terrazzo
Worker & Tile Setter.....\$ 40.78 28.92

BRRIO003-003 03/01/2020

Rates Fringes

Marble, Tile & Terrazzo
Finisher.....\$ 34.10 27.88

CARP0330-001 06/05/2020

Rates Fringes

CARPENTER (Includes Soft
Floor Layer).....\$ 39.13 28.60
Diver Tender.....\$ 40.13 28.60
DIVER.....\$ 50.73 28.60
Piledriver.....\$ 39.13 28.60
WELDER.....\$ 40.13 28.60

FOOTNOTES:

When not diving or tending the diver, the diver and diver
tender shall receive the piledriver rate. Diver tenders
shall receive \$1.00 per hour above the pile driver rate
when tending the diver.

Work on free-standing stacks, concrete silos & public utility
electrical power houses, which are over 35 ft. in height

when constructed: \$.50 per hour additional.

Work on exterior concrete shear wall gang forms, 45 ft. or more above ground elevation or on setback: \$.50 per hour additional.

The designated piledriver, known as the ""monkey"": \$1.00 per hour additional.

CARP1121-002 01/06/2020

	Rates	Fringes
MILLWRIGHT.....	\$ 39.07	29.15

ELEC0099-002 06/01/2020

	Rates	Fringes
ELECTRICIAN.....	\$ 41.61	57.24%
Teledata System Installer.....	\$ 31.21	13.10%+14.93

FOOTNOTES:

Work of a hazardous nature, or where the work height is 30 ft. or more from the floor, except when working OSHA-approved lifts: 20% per hour additional.

Work in tunnels below ground level in combined sewer outfall: 20% per hour additional.

ELEV0039-001 01/01/2020

	Rates	Fringes
ELEVATOR MECHANIC.....	\$ 53.25	34.765+a+b

FOOTNOTES:

A. PAID HOLIDAYS: New Years Day; Memorial Day; Independence Day; Labor Day; Veterans' Day; Thanksgiving Day; the Friday after Thanksgiving Day; and Christmas Day.

B. Employer contributes 8% basic hourly rate for 5 years or more of service of 6% basic hourly rate for 6 months to 5 years of service as vacation pay credit.

ENGI0057-001 06/01/2020

	Rates	Fringes
Operating Engineer: (power plants, sewer treatment plants, pumping stations, tunnels, caissons, piers, docks, bridges, wind turbines, subterranean & other marine and heavy construction work)		
GROUP 1.....	\$ 42.55	26.95+a
GROUP 2.....	\$ 40.55	26.95+a
GROUP 3.....	\$ 36.17	26.95+a

GROUP 4.....	\$ 33.32	26.95+a
GROUP 5.....	\$ 39.60	26.95+a
GROUP 6.....	\$ 30.40	26.95+a
GROUP 7.....	\$ 24.40	26.95+a
GROUP 8.....	\$ 36.25	26.95+a
GROUP 9.....	\$ 40.17	26.95+a

a. BOOM LENGTHS, INCLUDING JIBS:

- 150 feet and over + \$ 2.00
- 180 feet and over + \$ 3.00
- 210 feet and over + \$ 4.00
- 240 feet and over + \$ 5.00
- 270 feet and over + \$ 7.00
- 300 feet and over + \$ 8.00
- 350 feet and over + \$ 9.00
- 400 feet and over + \$10.00

a. PAID HOLIDAYS:

New Year's Day, President's Day, Memorial Day, July Fourth, Victory Day, Labor Day, Columbus Day, Veterans Day, Thanksgiving Day, Christmas Day. a: Any employee who works 3 days in the week in which a holiday falls shall be paid for the holiday.

a. FOOTNOTES:

Hazmat work: \$2.00 per hour additional.
Tunnel/Shaft work: \$5.00 per hour additional.

POWER EQUIPMENT OPERATORS CLASSIFICATIONS

GROUP 1: Cranes, lighters, boom trucks and derricks

GROUP 2: Digging machine, Ross Carrier, locomotive, hoist, elevator, bidwell-type machine, shot & water blasting machine, paver, spreader, graders, front end loader (3 yds. and over), vibratory hammer & vacuum truck, roadheaders, forklifts, economobile type equipment, tunnel boring machines, concrete pump and on site concrete plants.

GROUP 3: Oilers on cranes.

GROUP 4: Oiler on crawler backhoe.

GROUP 5: Bulldozer, bobcats, skid steer loader, tractor, scraper, combination loader backhoe, roller, front end loader (less than 3 yds.), street and mobile-powered sweeper (3-yd. capacity), 8-ft. sweeper minimum 65 HP).

GROUP 6: Well-point installation crew.

GROUP 7: Utility Engineers and Signal Persons

GROUP 8: Heater, concrete mixer, stone crusher, welding machine, generator and light plant, gas and electric driven pump and air compressor.

GROUP 9: Boat & tug operator.

* ENGI0057-002 11/01/2020

Power Equipment Operator
 (highway construction
 projects; water and sewerline
 projects which are incidental
 to highway construction
 projects; and bridge projects
 that do not span water)

GROUP 1.....	\$ 35.70	27.70+a
GROUP 2.....	\$ 30.40	27.70+a
GROUP 3.....	\$ 24.40	27.70+a
GROUP 4.....	\$ 30.98	27.70+a
GROUP 5.....	\$ 34.68	27.70+a
GROUP 6.....	\$ 34.30	27.70+a
GROUP 7.....	\$ 29.95	27.70+a
GROUP 8.....	\$ 31.33	27.70+a
GROUP 9.....	\$ 33.28	27.70+a

a. FOOTNOTE: a. Any employee who works three days in the week in which a holiday falls shall be paid for the holiday.

a. PAID HOLIDAYS: New Year's Day, President's Day, Memorial Day, July Fourth, Victory Day, Labor Day, Columbus Day, Veterans Day, Thanksgiving Day & Christmas Day.

POWER EQUIPMENT OPERATOR CLASSIFICATIONS

GROUP 1: Digging machine, crane, piledriver, lighter, locomotive, derrick, hoist, boom truck, John Henry's, directional drilling machine, cold planer, reclaimer, paver, spreader, grader, front end loader (3 yds. and over), vacuum truck, test boring machine operator, veemere saw, water blaster, hydro-demolition robot, forklift, economobile, Ross Carrier, concrete pump operator and boats

GROUP 2: Well point installation crew

GROUP 3: Utility engineers and signal persons

GROUP 4: Oiler on cranes

GROUP 5: Combination loader backhoe, front end loader (less than 3 yds.), forklift, bulldozers & scrapers and boats

GROUP 6: Roller, skid steer loaders, street sweeper

GROUP 7: Gas and electric drive heater, concrete mixer, light plant, welding machine, pump & compressor

GROUP 8: Stone crusher

GROUP 9: Mechanic & welder

 ENGI0057-003 06/01/2020

BUILDING CONSTRUCTION

	Rates	Fringes
Power Equipment Operator		
GROUP 1.....	\$ 41.82	26.95+a
GROUP 2.....	\$ 39.82	26.95+a
GROUP 3.....	\$ 39.60	26.95+a
GROUP 4.....	\$ 35.60	26.95+a
GROUP 5.....	\$ 32.75	26.95+a

GROUP 6.....	\$ 38.90	26.95+a
GROUP 7.....	\$ 38.47	26.95+a
GROUP 8.....	\$ 35.79	26.95+a

a. BOOM LENGTHS, INCLUDING JIBS:

- 150 ft. and over: + \$ 2.00
- 180 ft. and over: + \$ 3.00
- 210 ft. and over: + \$ 4.00
- 240 ft. and over: + \$ 5.00
- 270 ft. and over: + \$ 7.00
- 300 ft. and over: + \$ 8.00
- 350 ft. and over: + \$ 9.00
- 400 ft. and over: + \$10.00

a. PAID HOLIDAYS: New Year's Day, President's Day, Memorial Day, July Fourth, Victory Day, Labor Day, Columbus Day, Veterans Day, Thanksgiving Day & Christmas Day. a: Any employee who works 3 days in the week in which a holiday falls shall be paid for the holiday.

- a. FOOTNOTE: Hazmat work: \$2.00 per hour additional.
Tunnel/Shaft work: \$5.00 per hour additional.

POWER EQUIPMENT OPERATORS CLASSIFICATIONS

GROUP 1: Cranes, lighters, boom trucks and derricks.

GROUP 2: Digging machine, Ross carrier, locomotive, hoist, elevator, bidwell-type machine, shot & water blasting machine, paver, spreader, front end loader (3 yds. and over), vibratory hammer and vacuum truck

GROUP 3: Telehandler equipment, forklift, concrete pump & on-site concrete plant

GROUP 4: Fireman & oiler on cranes

GROUP 5: Oiler on crawler backhoe

GROUP 6: Bulldozer, skid steer loaders, bobcats, tractor, grader, scraper, combination loader backhoe, roller, front end loader (less than 3 yds.), street and mobile powered sweeper (3 yds. capacity), 8-ft. sweeper (minimum 65 hp)

GROUP 7: Well point installation crew

GROUP 8: Heater, concrete mixer, stone crusher, welding machine, generator for light plant, gas and electric driven pump & air compressor

IRON0037-001 09/16/2019

	Rates	Fringes
IRONWORKER.....	\$ 36.27	28.98

LABO0271-001 06/02/2019

BUILDING CONSTRUCTION

	Rates	Fringes
--	-------	---------

LABORER

GROUP 1.....	\$ 31.80	25.05
GROUP 2.....	\$ 32.05	25.05
GROUP 3.....	\$ 32.55	25.05
GROUP 4.....	\$ 32.80	25.05
GROUP 5.....	\$ 33.80	25.05

LABORERS CLASSIFICATIONS

GROUP 1: Laborer, Carpenter Tender, Mason Tender, Cement Finisher Tender, Scaffold Erector, Wrecking Laborer, Asbestos Removal [Non-Mechanical Systems]

GROUP 2: Asphalt Raker, Adzemen, Pipe Trench Bracer, Demolition Burner, Chain Saw Operator, Fence & Guard Rail Erector, Setter of Metal Forms for Roadways, Mortar Mixer, Pipelayer, Riprap & Dry Stonewall Builder, Highway Stone Spreader, Pneumatic Tool Operator, Wagon Drill Operator, Tree Trimmer, Barco-Type Jumping Tamper, Mechanical Grinder Operator

GROUP 3: Pre-Cast Floor & Roof Plank Erectors

GROUP 4: Air Track Operator, Hydraulic & Similar Self-Powered Drill, Block Paver, Rammer, Curb Setter, Powderman & Blaster

GROUP 5: Toxic Waste Remover

LAB00271-002 06/02/2019

HEAVY AND HIGHWAY CONSTRUCTION

Rates Fringes

LABORER

COMPRESSED AIR		
Group 1.....	\$ 49.23	23.50
Group 2.....	\$ 38.75	23.50
Group 3.....	\$ 51.23	23.50
FREE AIR		
Group 1.....	\$ 41.30	23.50
Group 2.....	\$ 38.75	23.50
Group 3.....	\$ 43.30	23.50
LABORER		
Group 1.....	\$ 31.80	23.05
Group 2.....	\$ 32.05	23.05
Group 3.....	\$ 32.80	23.05
Group 4.....	\$ 25.30	23.05
Group 5.....	\$ 33.80	23.05
OPEN AIR CAISSON, UNDERPINNING WORK AND BORING CREW		
Bottom Man.....	\$ 37.80	23.05
Top Man & Laborer.....	\$ 36.85	23.05
TEST BORING		
Driller.....	\$ 38.25	23.05
Laborer.....	\$ 36.85	23.05

LABORER CLASSIFICATIONS

GROUP 1: Laborer; Carpenter tender; Cement finisher tender; Wrecking laborer; Asbestos removers [non-mechanical systems]; Plant laborer; Driller in quarries

GROUP 2: Adzeperson; Asphalt raker; Barcotype jumping tamper; Chain saw operators; Concrete and power buggy operator; Concrete saw operator; Demolition burner; Fence and guard rail erector; Highway stone spreader; Laser beam operator; Mechanical grinder operator; Mason tender; Mortar mixer; Pneumatic tool operator; Riprap and dry stonewall builder; Scaffold erector; Setter of metal forms for roadways; Wagon drill operator; Wood chipper operator; Pipelayer; Pipe trench bracer

GROUP 3: Air track drill operator; Hydraulic and similar powered drills; Brick paver; Block paver; Rammer and curb setter; Powderperson and blaster

GROUP 4: Flagger & signaler

GROUP 5: Toxic waste remover

LABORER - COMPRESSED AIR CLASSIFICATIONS

GROUP 1: Mucking machine operator, tunnel laborer, brake person, track person, miner, grout person, lock tender, gauge tender, miner: motor person & all others in compressed air

GROUP 2: Change house attendant, powder watchperson, top person on iron

GROUP 3: Hazardous waste work within the ""HOT"" zone

LABORER - FREE AIR CLASSIFICATIONS

GROUP 1: Grout person - pumps, brake person, track person, form mover & stripper (wood & steel), shaft laborer, laborer topside, outside motorperson, miner, conveyor operator, miner welder, heading motorperson, erecting operator, mucking machine operator, nozzle person, rodperson, safety miner, shaft & tunnel, steel & rodperson, mole nipper, concrete worker, form erector (wood, steel and all accessories), cement finisher (this type of work only), top signal person, bottom person (when heading is 50' from shaft), burner, shield operator and TBM operator

GROUP 2: Change house attendant, powder watchperson

GROUP 3: Hazardous waste work within the ""HOT"" zone

 PAIN0011-005 06/01/2020

	Rates	Fringes
PAINTER		
Brush and Roller.....	\$ 35.62	22.55
Epoxy, Tanks, Towers, Swing Stage & Structural Steel.....	\$ 37.62	22.55
Spray, Sand & Water Blasting.....	\$ 38.62	22.55
Taper.....	\$ 36.37	22.55
Wall Coverer.....	\$ 36.12	22.55

 PAIN0011-006 06/01/2020

	Rates	Fringes
GLAZIER.....	\$ 39.18	22.55

FOOTNOTES:

SWING STAGE: \$1.00 per hour additional.

PAID HOLIDAYS: Labor Day & Christmas Day.

PAIN0011-011 06/01/2020

	Rates	Fringes
Painter (Bridge Work).....	\$ 52.25	22.55

PAIN0035-008 06/01/2011

	Rates	Fringes
Sign Painter.....	\$ 24.79	13.72

PLAS0040-001 06/03/2019

BUILDING CONSTRUCTION

	Rates	Fringes
CEMENT MASON/CONCRETE FINISHER...	\$ 36.00	27.15

FOOTNOTE: Cement Mason: Work on free swinging scaffolds under 3 planks width and which is 20 or more feet above ground and any offset structure: \$.30 per hour additional.

PLAS0040-002 07/01/2019

HEAVY AND HIGHWAY CONSTRUCTION

	Rates	Fringes
CEMENT MASON/CONCRETE FINISHER...	\$ 32.85	22.20

PLAS0040-003 07/01/2019

	Rates	Fringes
PLASTERER.....	\$ 37.55	27.50

PLUM0051-002 08/31/2020

	Rates	Fringes
Plumbers and Pipefitters.....	\$ 44.69	31.20

ROOF0033-004 06/01/2020

	Rates	Fringes
ROOFER.....	\$ 39.15	27.31

SFRI0669-001 01/02/2020

	Rates	Fringes
--	-------	---------

SPRINKLER FITTER.....\$ 45.67 24.74

SHEE0017-002 07/01/2020

	Rates	Fringes
Sheet Metal Worker.....	\$ 38.29	36.72

TEAM0251-001 05/01/2019

HEAVY AND HIGHWAY CONSTRUCTION

	Rates	Fringes
TRUCK DRIVER		
GROUP 1.....	\$ 27.96	26.8525+A+B+C
GROUP 2.....	\$ 27.61	26.8525+A+B+C
GROUP 3.....	\$ 27.66	26.8525+A+B+C
GROUP 4.....	\$ 27.71	26.8525+A+B+C
GROUP 5.....	\$ 27.81	26.8525+A+B+C
GROUP 6.....	\$ 28.21	26.8525+A+B+C
GROUP 7.....	\$ 28.41	26.8525+A+B+C
GROUP 8.....	\$ 27.91	26.8525+A+B+C
GROUP 9.....	\$ 28.16	26.8525+A+B+C
GROUP 10.....	\$ 27.96	26.8525+A+B+C

FOOTNOTES:

A. Paid Holidays: New Year's Day, Memorial Day, Independence Day, Labor Day, Thanksgiving Day and Christmas Day, plus Presidents' Day, Columbus Day, Veteran's Day & V-J Day, providing the employee has worked at least one day in the calendar week in which the holiday falls.

B. Employee who has been on the payroll for 1 year or more but less than 5 years and has worked 150 Days during the last year of employment shall receive 1 week's paid vacation; 5 to 10 years - 2 weeks' paid vacation; 10 or more years - 3 week's paid vacation.

C. Employees on the seniority list shall be paid a one hundred dollar (\$100.00) bonus for every four hundred (400) hours worked, up to a maximum of five hundred dollars (\$500.00)

All drivers working on a defined hazard material job site shall be paid a premium of \$2.00 per hour over applicable rate.

TRUCK DRIVER CLASSIFICATIONS

GROUP 1: Pick-up trucks, station wagons, & panel trucks

GROUP 2: Two-axle on low beds

GROUP 3: Two-axle dump truck

GROUP 4: Three-axle dump truck

GROUP 5: Four- and five-axle equipment

GROUP 6: Low-bed or boom trailer.

GROUP 7: Trailers when used on a double hook up (pulling 2

trailers)

GROUP 8: Special earth-moving equipment, under 35 tons

GROUP 9: Special earth-moving equipment, 35 tons or over

GROUP 10: Tractor trailer

WELDERS - Receive rate prescribed for craft performing operation to which welding is incidental.

=====
Note: Executive Order (EO) 13706, Establishing Paid Sick Leave for Federal Contractors applies to all contracts subject to the Davis-Bacon Act for which the contract is awarded (and any solicitation was issued) on or after January 1, 2017. If this contract is covered by the EO, the contractor must provide employees with 1 hour of paid sick leave for every 30 hours they work, up to 56 hours of paid sick leave each year. Employees must be permitted to use paid sick leave for their own illness, injury or other health-related needs, including preventive care; to assist a family member (or person who is like family to the employee) who is ill, injured, or has other health-related needs, including preventive care; or for reasons resulting from, or to assist a family member (or person who is like family to the employee) who is a victim of, domestic violence, sexual assault, or stalking. Additional information on contractor requirements and worker protections under the EO is available at www.dol.gov/whd/govcontracts.

Unlisted classifications needed for work not included within the scope of the classifications listed may be added after award only as provided in the labor standards contract clauses (29CFR 5.5 (a) (1) (ii)).

The body of each wage determination lists the classification and wage rates that have been found to be prevailing for the cited type(s) of construction in the area covered by the wage determination. The classifications are listed in alphabetical order of ""identifiers"" that indicate whether the particular rate is a union rate (current union negotiated rate for local), a survey rate (weighted average rate) or a union average rate (weighted union average rate).

Union Rate Identifiers

A four letter classification abbreviation identifier enclosed in dotted lines beginning with characters other than ""SU"" or ""UAVG"" denotes that the union classification and rate were prevailing for that classification in the survey. Example: PLUM0198-005 07/01/2014. PLUM is an abbreviation identifier of the union which prevailed in the survey for this classification, which in this example would be Plumbers. 0198 indicates the local union number or district council number where applicable, i.e., Plumbers Local 0198. The next number, 005 in the example, is an internal number used in processing the wage determination. 07/01/2014 is the effective date of the most current negotiated rate, which in this example is July 1,

2014.

Union prevailing wage rates are updated to reflect all rate changes in the collective bargaining agreement (CBA) governing this classification and rate.

Survey Rate Identifiers

Classifications listed under the ""SU"" identifier indicate that no one rate prevailed for this classification in the survey and the published rate is derived by computing a weighted average rate based on all the rates reported in the survey for that classification. As this weighted average rate includes all rates reported in the survey, it may include both union and non-union rates. Example: SULA2012-007 5/13/2014. SU indicates the rates are survey rates based on a weighted average calculation of rates and are not majority rates. LA indicates the State of Louisiana. 2012 is the year of survey on which these classifications and rates are based. The next number, 007 in the example, is an internal number used in producing the wage determination. 5/13/2014 indicates the survey completion date for the classifications and rates under that identifier.

Survey wage rates are not updated and remain in effect until a new survey is conducted.

Union Average Rate Identifiers

Classification(s) listed under the UAVG identifier indicate that no single majority rate prevailed for those classifications; however, 100% of the data reported for the classifications was union data. EXAMPLE: UAVG-OH-0010 08/29/2014. UAVG indicates that the rate is a weighted union average rate. OH indicates the state. The next number, 0010 in the example, is an internal number used in producing the wage determination. 08/29/2014 indicates the survey completion date for the classifications and rates under that identifier.

A UAVG rate will be updated once a year, usually in January of each year, to reflect a weighted average of the current negotiated/CBA rate of the union locals from which the rate is based.

WAGE DETERMINATION APPEALS PROCESS

1.) Has there been an initial decision in the matter? This can be:

- * an existing published wage determination
- * a survey underlying a wage determination
- * a Wage and Hour Division letter setting forth a position on a wage determination matter
- * a conformance (additional classification and rate) ruling

On survey related matters, initial contact, including requests for summaries of surveys, should be with the Wage and Hour Regional Office for the area in which the survey was conducted because those Regional Offices have responsibility for the Davis-Bacon survey program. If the response from this initial contact is not satisfactory, then the process described in 2.) and 3.) should be followed.

With regard to any other matter not yet ripe for the formal process described here, initial contact should be with the Branch of Construction Wage Determinations. Write to:

Branch of Construction Wage Determinations
Wage and Hour Division
U.S. Department of Labor
200 Constitution Avenue, N.W.
Washington, DC 20210

2.) If the answer to the question in 1.) is yes, then an interested party (those affected by the action) can request review and reconsideration from the Wage and Hour Administrator (See 29 CFR Part 1.8 and 29 CFR Part 7). Write to:

Wage and Hour Administrator
U.S. Department of Labor
200 Constitution Avenue, N.W.
Washington, DC 20210

The request should be accompanied by a full statement of the interested party's position and by any information (wage payment data, project description, area practice material, etc.) that the requestor considers relevant to the issue.

3.) If the decision of the Administrator is not favorable, an interested party may appeal directly to the Administrative Review Board (formerly the Wage Appeals Board). Write to:

Administrative Review Board
U.S. Department of Labor
200 Constitution Avenue, N.W.
Washington, DC 20210

4.) All decisions by the Administrative Review Board are final.

=====

END OF GENERAL DECISION"

OWNER CERTIFICATION

RIPDES Construction General Permit – Section V.G

I certify under penalty of law that this document and all attachments were prepared under the direction or supervision in accordance with a system designed to assure that qualified personnel properly gather and evaluate the information submitted. Based on my inquiry of the person or persons who manage the system, or those persons directly responsible for gathering the information, the information submitted is, to the best of my knowledge and belief, true, accurate, and complete.

I am aware that there are significant penalties for submitting false information, including the possibility of fine and imprisonment for knowing violations. I am aware that it is the responsibility of the owner/operator to implement and amend the SWPPP as appropriate in accordance with the requirements of the RIPDES Construction General Permit.


Owner Signature.

10-16-20
Date

Owner Name: Brian Moore, P.E.

Owner Title: RIDOT Office of Stormwater

Company Name: **Rhode Island Department of Transportation**

Item**SPECIAL PROVISION INDEX
Description****Page**

926.9903	Anchored Precast Barrier for Temporary Traffic Control (MASH TL-3) Left in Place	JS-78
926.9904	Unanchored Precast Barrier for Temporary Traffic Control (MASH TL-3) Left in Place	

federal regulations including but not limited to Department of Transportation, Environmental Protection Agency and applicable state and local regulations.

METHOD OF MEASUREMENT: This item will not be measured for payment.

BASIS OF PAYMENT: The accepted quantity of Item Code 202.9901 HANDLING, HAULING, STOCKPILING, MANAGEMENT, AND DISPOSAL OF CONTAMINATED SOILS will be paid for at the actual amount expended to handle, load, haul, stockpile, manage, load, transport, and dispose of the soil. The price so stated shall constitute full and complete compensation for all labor, materials, tools and equipment, loading, handling, hauling, stockpiling, management of contaminated soils, polyethylene, dust/odor control, soil classification, segregation, soil characterization, health and safety plan, security, runoff protection, decontamination, operation logs, submittals, installation and removal of construction entrances/stone stabilized pads, vehicle washing, street sweeping, disposal, and all other incidentals required to complete the work as described in this specification, and as required by State, Federal and Local requirements after notification/reporting of the presence of contaminated soil at the Site, and elsewhere as referenced in the Contract Documents, complete in place and accepted by the Engineer. The estimated dollar figure for this item of work is established by the Department at \$20,000 and is inserted in the proposal as an authorized Lump Sum amount from which payments will be drawn.

Excavation will be paid for separately under the appropriate items.
Compost filter sock shall be paid for under Item Code 206.0301 "Compost Filter Sock"

Lori A. Fisette

CODE 702.9901
FOUR INCH FRAME AND GRATE

DESCRIPTION: This work consists of furnishing and installing four-inch frame and grate on inlets and catch basins in reasonably close conformity with the details indicated on the Plans or as directed by the Engineer, all in accordance with these Specifications.

MATERIALS:

General. Clay Brick, Concrete Masonry Units, Lime, Mortar, Frames, Grates, Covers, and Ladder Rungs shall conform to the applicable requirements of Subsection M.04.03 of these Specifications.

CONSTRUCTION METHODS: Construction Methods shall conform to the applicable requirements of Section 702.03; Construction Methods of the Standard Specifications.

METHOD OF MEASUREMENT: "FOUR INCH FRAME AND GRATE" will be measured for payment by the unit "EACH" of such assemblies actually installed in accordance with the Plans and/or as directed by the Engineer.

BASIS OF PAYMENT: The accepted quantities of "FOUR INCH FRAME AND GRATE" will be paid for at the contract bid price per "EACH" such assembly as listed in the proposal. The prices so-stated constitute full and complete compensation for all labor, tools, materials and equipment, for providing said assemblies and for all other incidentals required to finish the work, complete in place and accepted by the Engineer.

CODE T15.9902
FLASHING SIGN ASSEMBLY

DESCRIPTION: This item of work shall consist of furnishing and installing the components of a flashing LED sign assembly consisting of solar-powered flashing beacons, sign panel, mounting hardware, pedestal pole and foundation at the locations shown on the Plans or as directed by the Engineer.

MATERIALS: Materials shall conform to the applicable sections of the Standard Specifications with the following additions:

The Contractor shall be responsible for producing a foundation design. Shop drawings and design computations shall bear the stamp of a Registered Professional Engineer in the State of Rhode Island. Shop drawings shall be approved prior to fabrication, and it shall be expressly understood and agreed upon that said approval does not relieve the Contractor of its responsibility for the design, fabrication and erection of the structure in accordance with the details shown on the Plans.

The LED flashing sign assembly materials shall be of the following or approved equivalent:

- W3-4 (48"x48") Sign Panel
- TAPCO Blinker Beacon Solar LED Dual Beacon with Solar Panel and Solar Time Clock
- Traffic Signal Standard, 14 Foot, Std. 19.4.0 Aluminum Pedestal Pole and Foundation

CONSTRUCTION METHODS: Construction methods shall conform to the applicable sections of the Standard Specifications with the following additions:

All components of the flashing sign assembly shall be installed in accordance with the manufacturer's recommendations.

METHOD OF MEASUREMENT: "FLASHING SIGN ASSEMBLY" will be measured for payment by the unit "EACH" of such units actually installed in accordance with the Plans and/or as directed by the Engineer.

BASIS OF PAYMENT: "FLASHING SIGN ASSEMBLY" will be paid for at the contract unit price bid per "EACH" as listed in the Proposal. The price so-stated constitutes full and complete compensation for all materials, equipment, tools, labor, sign panel, flashing beacons, solar panel, solar time clock, pedestal pole and foundation including anchor bolts and reinforcement, and all other incidentals required to finish the work, complete in place and accepted by the Engineer.

CODE 926.9903
ANCHORED PRECAST BARRIER FOR TEMPORARY TRAFFIC CONTROL (MASH TL-3)
LEFT IN PLACE

CODE 926.9904
UNANCHORED PRECAST BARRIER FOR TEMPORARY TRAFFIC CONTROL (MASH TL-3)
LEFT IN PLACE

DESCRIPTION: This work consists of furnishing, installing, maintaining, relocating, and removing anchored precast barrier and unanchored precast barrier for temporary traffic control at the locations shown on the Plans or as directed by the Engineer in conformance with the applicable sections of the Standard Specifications. Anchored or unanchored barriers on bridge decks and/or roadway approaches shall meet or exceed the test level as indicated on the Plans. This barrier will be left in place, on site, and become the property of RIDOT.

MATERIALS: Barrier, delineators, barrier anchors, nuts, washers, drainage slots, and high strength non-shrink grout shall conform to the applicable Materials subsection of Code 926.9901; Anchored Precast Barrier For Temporary Traffic Control (MASH TL-3) and Code 926.9902; Unanchored Precast Barrier For Temporary Traffic Control (MASH TL-3).

Submittals: The Contractor shall submit detailed shop drawings to the Engineer. The shop drawings shall include dimensions, and anchor type and spacing for the barrier, and the test results that show the temporary barrier meets or exceeds MASH TL-3.

CONSTRUCTION METHODS: Construction Methods shall conform to the Construction Methods subsection of Code 926.9901; Anchored Precast Barrier For Temporary Traffic Control (MASH TL-3) and Code 926.9902; Unanchored Precast Barrier For Temporary Traffic Control (MASH TL-3).

METHOD OF MEASUREMENT: “ANCHORED PRECAST BARRIER FOR TEMPORARY TRAFFIC CONTROL (MASH TL-3) LEFT IN PLACE” and “UNANCHORED PRECAST BARRIER FOR TEMPORARY TRAFFIC CONTROL (MASH TL-3) LEFT IN PLACE” will be measured in “LINEAR FOOT” of continuous runs of those units actually placed in accordance with the Plans and/or as directed by the Engineer. The measured length includes all joints between the units.

BASIS OF PAYMENT: The accepted quantities of “ANCHORED PRECAST BARRIER FOR TEMPORARY TRAFFIC CONTROL (MASH TL-3) LEFT IN PLACE” and “UNANCHORED PRECAST BARRIER FOR TEMPORARY TRAFFIC CONTROL (MASH TL-3) LEFT IN PLACE” will be paid for at their respective contract unit prices per “LINEAR FOOT” as listed in the Proposal. The price so-stated constitutes full and complete compensation for all labor, tools, materials, equipment, placement of the units in accordance with the Plans, furnishing, hauling, handling, any new parts required to secure the units to the pavement or to adjacent units, maintaining, relocating, reflective delineators, bolts, anchors, nuts, washers, hardware, high strength non-shrink grout, pavement repair, and for all incidentals required to finish the work, complete and accepted by the Engineer.

The Contractor will be compensated for barrier brought onto the jobsite. The Contractor is expected to relocate barrier for construction phasing and work zone modifications during construction. The cost of these relocations and modifications are included in the cost of the barrier items. The Contractor will not be compensated for moving (relocating or modifying) the barrier once the barrier is on the jobsite. The Contractor will not be compensated for any work necessary to realign the barrier units if they are disturbed or damaged as a result of the Contractor’s operations.

The Contractor will be paid 90 percent of the contract unit price when the barrier units are in place. The remaining 10 percent of the contract unit price will be paid when the project has reached substantial completion.

Table of Contents - Distribution of Quantities

Project Name - HSIP - Intersection Safety - Rt 37 & Natick Ave

Estimate Name - Add 1 (Rte 37 at Natick)

R.I. Contract No. - 2021-CH-007

FAP Nos: STP-HSIP(090)

ItemCode	Description	Page
201.0402	REMOVE AND DISPOSE CONCRETE CURB	1
201.0403	REMOVE AND DISPOSE SIDEWALKS	1
201.0407	REMOVE AND DISPOSE PAVEMENT AND RIGID BASE	1
201.0409	REMOVE AND DISPOSE FLEXIBLE PAVEMENT	1
201.0410	REMOVE AND DISPOSE CATCH BASINS	2
201.0414	REMOVE AND DISPOSE PIPE - ALL SIZES	2
201.0415	REMOVE AND DISPOSE GUARDRAIL AND POST ALL TYPES	2
201.0421	REMOVE AND DISPOSE BITUMINOUS CURB	3
201.0428	REMOVE AND DISPOSE FRAME AND GRATE OR FRAME AND COVER	3
201.0430	REMOVE AND DISPOSE CONCRETE MEDIAN BARRIER	3
201.0610	REMOVE AND DISPOSE DIRECTIONAL, WARNING, REGULATORY, SERVICE, AND STREET SIGNS	3
201.0622	REMOVE AND DISPOSE OVERHEAD SIGN PANEL	4
201.0623	REMOVE AND DISPOSE OVERHEAD SIGN STRUCTURE	4
201.9901	REMOVE AND DISPOSE DELINEATOR PANEL AND POST	5
201.9902	REMOVE AND DISPOSE OVERHEAD SIGN PANEL AND FLASHER ASSEMBLY	5
201.9903	REMOVE AND DISPOSE OF RAISED CONCRETE MEDIAN	5
202.0100	EARTH EXCAVATION	5
202.0201	ROCK EXCAVATION MECHANICAL	6
202.0700	COMMON BORROW	6
202.9901	HANDLING, HAULING, STOCKPILING, MANAGEMENT, AND DISPOSAL OF CONTAMINATED SOILS	6
203.0530	DEWATERING	6
204.0100	TRIMMING AND FINE GRADING	7
206.0301	COMPOST FILTER SOCK	7
207.0210	STONE CHECK DAMS	8
209.0210	HIGH FLOW SACK INSERT CATCH BASIN INLET PROTECTION	8
211.0100	CONSTRUCTION ACCESSES STANDARD 9.9.0	9
213.9901	PLACEMENT OF MILLINGS BENEATH GUARDRAIL	9
302.0100	GRAVEL BORROW SUBBASE COURSE	10
401.1000	CLASS 19.0 HMA	10
401.2005	CLASS 12.5 HMA FOR MISCELLANEOUS WORK	11
401.2100	MODIFIED CLASS 12.5 HMA	11
401.4000	CLASS 4.75 HMA	11
402.9901	FRICTION COURSE WITHOUT PAY ADJUSTMENT	11
403.0300	ASPHALT EMULSION TACK COAT	12
410.1000	TEMPORARY PATCHING MATERIAL/TRENCHES	12
601.0200	CLASS XX PORTLAND CEMENT CONCRETE	12
701.0412	REINFORCED CONCRETE PIPE M 170 CLASS III 12 INCH	12
701.6012	12 INCH DUCTILE IRON SEWER SAFE PIPE CLASS 52	13
701.7712	12 INCH REINFORCED CONCRETE PIPE END SECTION STANDARD 2.3.0	13
702.0513	FRAME AND GRATE STANDARD 6.3.1	13
702.0515	FRAME AND GRATE HIGH CAPACITY STANDARD 6.3.3	13
702.0521	FRAME AND COVER STANDARD 6.2.0	14
702.0533	PRECAST CONCRETE APRON STONE 38'' STANDARD 7.1.8	14
702.0605	PRECAST CATCH BASIN 4' DIAMETER STANDARD 4.4.0	14
702.0722	SOLID BLOCK SHALLOW TYPE "F" SQUARE CATCH BASIN STANDARD 3.5.0	15
702.9901	FOUR INCH FRAME AND GRATE	15
703.9901	SAND FILTER	15
704.0100	RECONSTRUCT CATCH BASIN/CORBEL CONES	15

Table of Contents - Distribution of Quantities

Project Name - HSIP - Intersection Safety - Rt 37 & Natick Ave

Estimate Name - Add 1 (Rte 37 at Natick)

R.I. Contract No. - 2021-CH-007

FAP Nos: STP-HSIP(090)

ItemCode	Description	Page
704.0300	RECONSTRUCT CATCH BASIN/VERTICAL WALLS	15
706.9000	PLUG AND CAP PIPE ALL SIZES	15
707.1200	ADJUST CATCH BASIN TO MANHOLE	16
707.2000	ADJUST FRAME AND GRATE TO GRADE	16
708.9040	CLEANING AND FLUSHING PIPE ALL SIZES	16
708.9041	CLEANING CATCH BASINS ALL TYPES AND SIZES	17
901.0151	TERMINAL END SECTION SINGLE FACE STANDARD 34.3.2	17
901.0163	GUARDRAIL STEEL BEAM POST IN LEDGE STANDARD 34.1.2	17
901.9901	STEEL BEAM GUARDRAIL SINGLE FACE (MASH)	18
901.9902	STEEL BEAM GUARDRAIL DOUBLE FACE (MASH)	18
901.9903	GUARDRAIL STEEL BEAM ANCHORAGE TRAILING END SECTION (MASH)	18
901.9904	MGS LONG SPAN LSC-2 GUARDRAIL SYSTEM	18
901.9905	STEEL BEAM GUARDRAIL TRANSITION TO RIGID BARRIER (SINGLE FACED)	19
905.0110	PORTLAND CEMENT SIDEWALK MONOLITHIC STANDARD 43.1.0	19
905.0131	PORTLAND CEMENT CONCRETE MEDIAN 6'' MONOLITHIC	19
906.0210	CEMENT CONCRETE CURB PRECAST STRAIGHT STANDARD 7.1.0	19
906.0211	CEMENT CONCRETE CURB PRECAST CIRCULAR STANDARD 7.1.0	19
906.0221	6' PRECAST CONCRETE TRANSITION CURB STANDARD 7.1.2	20
906.0230	CEMENT CONCRETE SLOPE FACE CURB PRECAST STRAIGHT STANDARD 7.2.0	20
906.0231	CEMENT CONCRETE SLOPE FACE CURB PRECAST CIRCULAR STANDARD 7.2.0	20
906.0250	PRECAST CONCRETE WHEELCHAIR RAMP CURB STANDARDS 7.1.3, 43.3.0 AND 43.3.1	21
906.0263	PRECAST CONCRETE RAMP STONE 18-INCH CIRCULAR STANDARD 7.1.9	21
906.0270	PRECAST CONCRETE TRANSITION CURB STANDARD 7.2.2	21
906.0271	PRECAST CONCRETE SLOPE FACE TRANSITION CURB STANDARD 7.2.1	22
906.0280	3' PRECAST CONCRETE TRANSITION CURB STANDARD 7.1.1	22
907.0100	WATER FOR DUST CONTROL	22
909.9901	PRECAST F SHAPE CONCRETE BARRIER DOUBLE FACED - STD. 40.1.0 MODIFIED	23
914.5010	FLAGPERSONS	23
914.5020	FLAGPERSONS - OVERTIME	23
916.9901	NARROW CONDITION IMPACT ATTENUATOR FOR TEMPORARY TRAFFIC CONTROL	23
919.0101	TEST PITS	23
920.0070	DUMPED STONE RIPRAP R-3, R-4, 4-5 STANDARD 8.3.0	23
920.0150	BEDDING FOR RIPRAP FS-2 STANDARD 8.3.0	24
920.0200	FILTER FABRIC FOR RIP-RAP	24
922.0100	TEMPORARY CONSTRUCTION SIGNS STANDARD 29.1.0 AND 27.1.1	24
923.0105	DRUM BARRICADE STANDARD 26.2.0	25
923.0120	PLASTIC PIPE BARRICADE STANDARD 26.3.0	25
923.0200	FLUORESCENT TRAFFIC CONES STANDARD 26.1.0	25
924.0113	ADVANCE WARNING ARROW PANEL	25
925.0112	PORTABLE CHANGEABLE MESSAGE SIGN	26
926.9901	ANCHORED PRECAST BARRIER FOR TEMPORARY TRAFFIC CONTROL (MASH TL-3)	26
926.9902	UNANCHORED PRECAST BARRIER FOR TEMPORARY TRAFFIC CONTROL (MASH TL-3)	26
928.0500	SHADOW OR ADVANCE WARNING VEHICLE WITH IMPACT ATTENUATOR AND FLASHING ARROW BOARD	26
929.0110	FIELD OFFICE	26

Table of Contents - Distribution of Quantities

Project Name - HSIP - Intersection Safety - Rt 37 & Natick Ave

Estimate Name - Add 1 (Rte 37 at Natick)

R.I. Contract No. - 2021-CH-007

FAP Nos: STP-HSIP(090)

ItemCode	Description	Page
932.0200	FULL-DEPTH SAWCUT OF BITUMINOUS PAVEMENT	27
932.0220	FULL DEPTH SAWCUT OF BITUMINOUS SIDEWALK/DRIVEWAY	27
932.0230	FULL DEPTH SAWCUT OF PORTLAND CEMENT CONCRETE SIDEWALK/DRIVEWAY	27
935.0400	REMOVING BITUMINOUS PAVEMENT BY MICRO MILLING	28
935.9901	TRANSVERSE RUMBLE STRIP	28
936.0100	MOBILIZATION AND DEMOBILIZATION	28
937.0200	MAINTENANCE AND MOVEMENT TRAFFIC PROTECTION	28
942.0200	DETECTABLE WARNING PANEL STANDARD 48.1.0	28
L01.0102	LOAM BORROW 4 INCHES DEEP	28
L01.9901	BIOFILTRATION SWALE	29
L02.0101	GENERAL HIGHWAY SEEDING (TYPE 1)	29
L05.0506	JUTE MESH	29
T02.9901	LIGHTING SYSTEM MODIFICATIONS	30
T04.5001	6 AWG SINGLE CONDUCTOR CABLE 600V INSULATION	30
T04.5302	14 AWG 2 CONDUCTOR TWISTED SHIELDED CABLE	30
T05.0100	PRECAST TYPE A HANDHOLE STANDARD 18.2.0	30
T05.9901	BREAK INTO EXISTING HANDHOLE	30
T06.5430	3 INCH SCHEDULE 80 POLYVINYL CHLORIDE PLASTIC CONDUIT - UNDER EXISTING PAVEMENT	30
T12.9901	MODIFY EXISTING TRAFFIC SIGNAL CONTROLLER CABINET	31
T13.1000	TRAFFIC DETECTORS-LOOP, STANDARD 19.6.0	31
T14.9901	REMOVE AND REPLACE SIGNAL HEAD LED MODULE	31
T15.0100	DIRECTIONAL REGULATORY AND WARNING SIGNS	31
T15.0200	REMOVE AND RELOCATE DIRECTIONAL REGULATORY AND WARNING SIGN	33
T15.9901	REFLECTIVE SIGN POST PANEL - RED	33
T15.9902	FLASHING SIGN ASSEMBLY	34
T17.0100	OVERHEAD SIGN PANELS	34
T17.0204	OVERHEAD SIGN STRUCTURE 31-35 FOOT CANTILEVER - STEEL	34
T18.9901	DELINEATOR - YELLOW	34
T18.9902	DELINEATOR - WHITE	35
T18.9903	GUARDRAIL END DELINEATOR - GREEN	36
T20.0706	6 INCH WHITE WATERBORNE PAINT PAVEMENT MARKINGS	36
T20.0712	12 INCH WHITE WATERBORNE PAINT PAVEMENT MARKINGS	37
T20.0900	BI-DIRECTIONAL CONTROL DEVICE STANDARD 20.2.0	37
T20.0906	6 INCH YELLOW WATERBORNE PAINT PAVEMENT MARKINGS	37
T20.1401	WATERBORNE PAINT PAVEMENT MARKING SYMBOL - ARROW (STRAIGHT, LEFT, RIGHT OR COMBINED) STANDARD 20.1.0	38
T20.1405	WATERBORNE PAINT PAVEMENT MARKING SYMBOL - YIELD LINE TRIANGLE (ALL SIZES)	38
T20.1410	WATERBORNE PAINT PAVEMENT MARKING WORD ("ONLY", "STOP", "YIELD", "AHEAD", "XING", "SCHOOL", OR OTHER) STANDARD 20.1.0	39
T20.2406	6 INCH WHITE FINAL EPOXY RESIN PAVEMENT MARKINGS	39
T20.2412	12 INCH WHITE FINAL EPOXY RESIN PAVEMENT MARKINGS	40
T20.2804	4 INCH YELLOW FINAL EPOXY RESIN PAVEMENT MARKINGS	41

Table of Contents - Distribution of Quantities

Project Name - HSIP - Intersection Safety - Rt 37 & Natick Ave

Estimate Name - Add 1 (Rte 37 at Natick)

R.I. Contract No. - 2021-CH-007

FAP Nos: STP-HSIP(090)

ItemCode	Description	Page
T20.2806	6 INCH YELLOW FINAL EPOXY RESIN PAVEMENT MARKINGS	41
T20.2812	12 INCH YELLOW FINAL EPOXY RESIN PAVEMENT MARKINGS	41
T20.3401	FINAL EPOXY RESIN PAVEMENT MARKING SYMBOL - ARROW (STRAIGHT, LEFT, RIGHT OR COMBINED) STANDARD 20.1.0	41
T20.3405	FINAL EPOXY RESIN PAVEMENT MARKING SYMBOL - YIELD LINE TRIANGLE (ALL SIZES)	42
T20.3410	FINAL EPOXY RESIN PAVEMENT MARKING WORD ("ONLY", "STOP", "YIELD", "AHEAD", "XING", "SCHOOL", OR OTHER) STANDARD 20.1.0	42
T20.4506	REMOVE PAVEMENT MARKING LINE - LESS THAN OR EQUAL TO 6 INCHES WIDE	43
T20.4508	REMOVE PAVEMENT MARKING LINE - GREATER THAN 6 INCHES WIDE	44
T20.4511	REMOVE PAVEMENT MARKING SYMBOL - ARROW (STRAIGHT, LEFT, RIGHT OR COMBINED)	44
T20.4515	REMOVE PAVEMENT MARKING SYMBOL - YIELD LINE TRIANGLE (ALL SIZES)	44
T20.4520	REMOVE PAVEMENT MARKING WORD ("ONLY", "STOP", "YIELD", "AHEAD", "XING", "SCHOOL", OR OTHER)	45
926.9903	ANCHORED PRECAST BARRIER FOR TEMPORARY TRAFFIC CONTROL (MASH TL-3) LEFT IN PLACE	45
932.0100	CUTTING AND MATCHING ASPHALT	45
932.0210	FULL DEPTH SAWCUT OF BITUMINOUS PAVEMENT AND RIGID BASE	46

Distribution of Quantities

Project Name - HSIP - Intersection Safety - Rt 37 & Natick Ave
 Estimate Name - Add 1 (Rte 37 at Natick)
 R.I. Contract No. - 2021-CH-007
 FAP Nos: STP-HSIP(090)

Item No.	Item Code	Description	UM	Qty.	Pay Code	Seq. No.
088	925.0112	PORTABLE CHANGEABLE MESSAGE SIGN	PDAY			
		TRAFFIC CONTROL				
		TRAFFIC CONTROL		480.00	0021	01
Item 925.0112 Total:				480.00		
089	926.9901	ANCHORED PRECAST BARRIER FOR	LF			
		TEMPORARY TRAFFIC CONTROL (MASH				
		TL-3)				
		ROUTE 37 WB				
		STA. 20+38 TO STA. 21+25 RT			0021	01
		STA. 20+40 TO STA. 22+70 RT			0021	01
		TRAFFIC CONTROL				
		TRAFFIC CONTROL		2,140.00	0021	01
Item 926.9901 Total:				2,140.00		
090	926.9902	UNANCHORED PRECAST BARRIER FOR	LF			
		TEMPORARY TRAFFIC CONTROL (MASH				
		TL-3)				
		TRAFFIC CONTROL				
		TRAFFIC CONTROL		550.00	0021	01
Item 926.9902 Total:				550.00		
091	928.0500	SHADOW OR ADVANCE WARNING VEHICLE	HRS			
		WITH IMPACT ATTENUATOR AND				
		FLASHING ARROW BOARD				
		TRAFFIC CONTROL				
		TRAFFIC CONTROL		320.00	0021	01
Item 928.0500 Total:				320.00		
092	929.0110	FIELD OFFICE	PMO			
		PROJECT WIDE				
		ENTIRE PROJECT		12.00	0021	01
Item 929.0110 Total:				12.00		

Distribution of Quantities

Project Name - HSIP - Intersection Safety - Rt 37 & Natick Ave
 Estimate Name - Add 1 (Rte 37 at Natick)
 R.I. Contract No. - 2021-CH-007
 FAP Nos: STP-HSIP(090)

Item No.	Item Code	Description	UM	Qty.	Pay Code	Seq. No.
141	T20.4515 Cont.	NATICK AVENUE				
		STA. 304+08 RT		1.00	0021	01
		TRAFFIC CONTROL				
		PHASE 4		1.00	0021	01
Item T20.4515 Total:				2.00		
142	T20.4520	REMOVE PAVEMENT MARKING WORD	EACH			
		("ONLY", "STOP", "YIELD", "AHEAD",				
		"XING", "SCHOOL", OR OTHER)				
		NATICK AVENUE				
		STA. 305+94 LT		1.00	0021	01
		TRAFFIC CONTROL				
		PHASE 2		3.00	0021	01
		PHASE 3		3.00	0021	01
		PHASE 4		3.00	0021	01
Item T20.4520 Total:				10.00		
143	926.9903	ANCHORED PRECAST BARRIER FOR	LF			
		TEMPORARY TRAFFIC CONTROL (MASH				
		TL-3) LEFT IN PLACE				
		ROUTE 37 WB				
		STA. 20+38 TO STA. 21+25 RT		90.00	0021	01
		STA. 20+40 TO STA. 22+70 RT		230.00	0021	01
Item 926.9903 Total:				320.00		
144	932.0100	CUTTING AND MATCHING ASPHALT	LF			
		I-295 OFF RAMP				
		STA. 520+50 RT TO STA.		44.00	0021	01
		520+50 LT				
		I-295 ON RAMP				
		STA. 717+89 RT TO STA.		46.00	0021	01
		717+89 LT				
		ROUTE 37 WB				

Distribution of Quantities

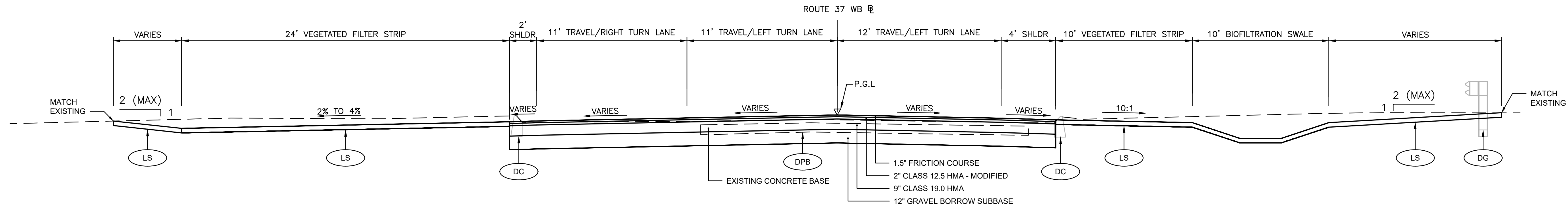
Project Name - HSIP - Intersection Safety - Rt 37 & Natick Ave

Estimate Name - Add 1 (Rte 37 at Natick)

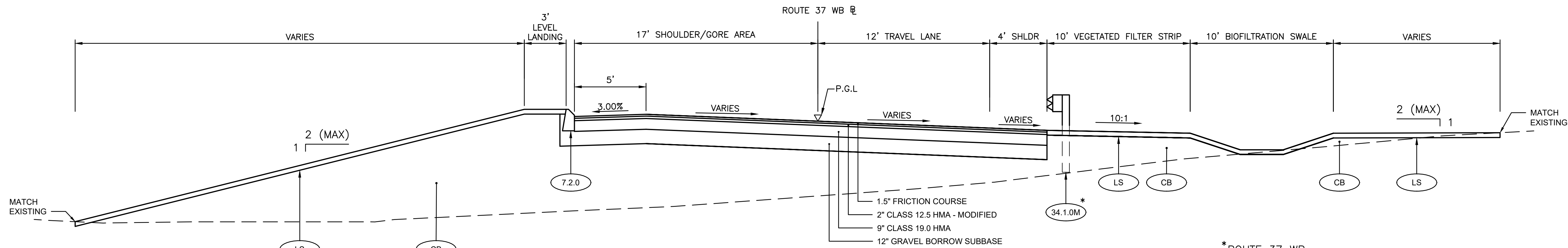
R.I. Contract No. - 2021-CH-007

FAP Nos: STP-HSIP(090)

Item No.	Item Code	Description	UM	Qty.	Pay Code	Seq. No.
144	932.0100	Cont.				
		STA. 10+12 RT TO STA. 10+58		260.00	0021	01
		LT				
		STA. 22+50 RT TO STA. 22+50		96.00	0021	01
		LT				
Item 932.0100 Total:				446.00		
145	932.0210	FULL DEPTH SAWCUT OF BITUMINOUS	LF			
		PAVEMENT AND RIGID BASE				
		PROJECT WIDE				
		AS NEEDED		200.00	0021	01
Item 932.0210 Total:				200.00		

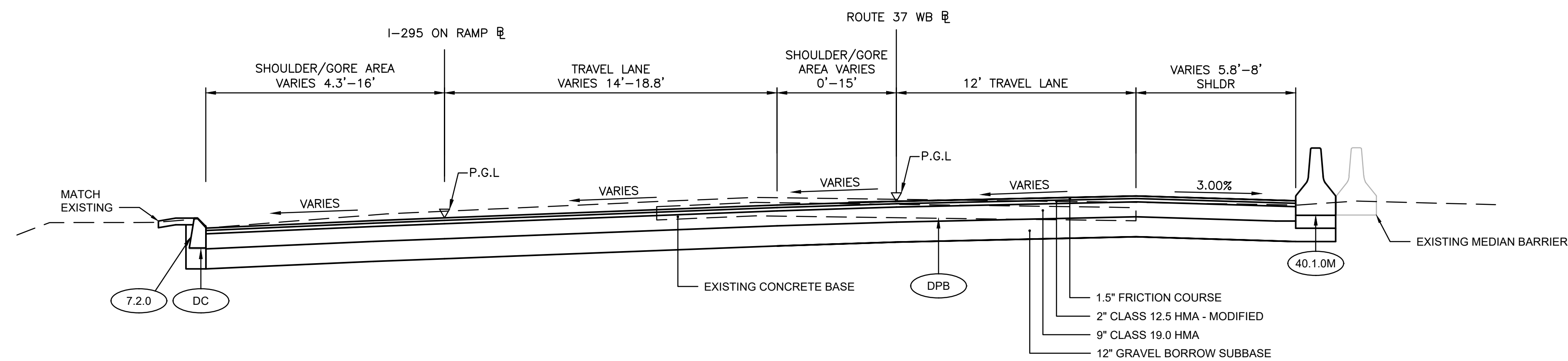


STATION 11+07 TO STATION 14+62
ROUTE 37 WB
SCALE: 1"=4'



STATION 15+91 TO STATION 18+50
ROUTE 37 WB
SCALE: 1"=4'

*ROUTE 37 WB
STA 17+64 TO STA 18+50 RT



STATION 720+18 TO STATION 722+50
I-295 OFF RAMP
SCALE: 1"=4'

STATION 20+13 TO STATION 22+50
ROUTE 37 WB
SCALE: 1"=4'

ADDENDUM NO. 1



RHODE ISLAND
DEPARTMENT OF TRANSPORTATION

DESIGNED BY:
CHECKED BY:
DATE:
SHEET: 7
OF:

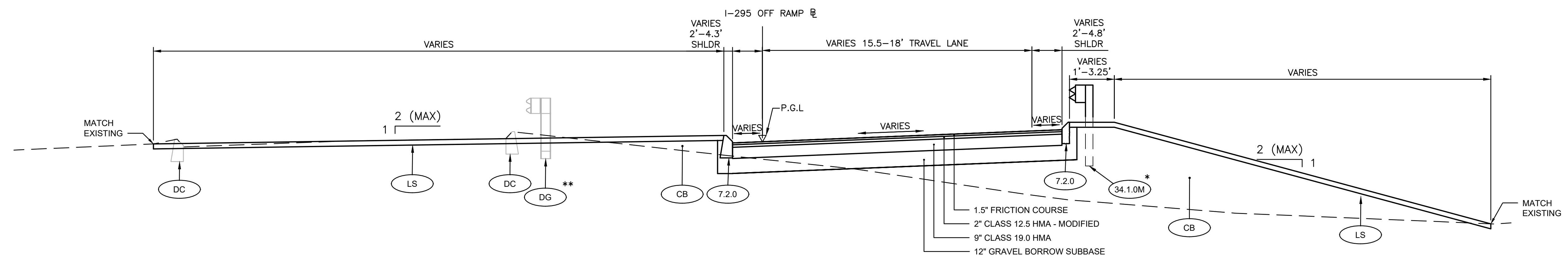
SCALE: 1"=4'

REVISIONS			REVISIONS		
NO.	DATE	BY	NO.	DATE	BY
1	11/6/20	VHB			

HSIP - INTERSECTION SAFETY -
ROUTE 37 & NATICK AVENUE

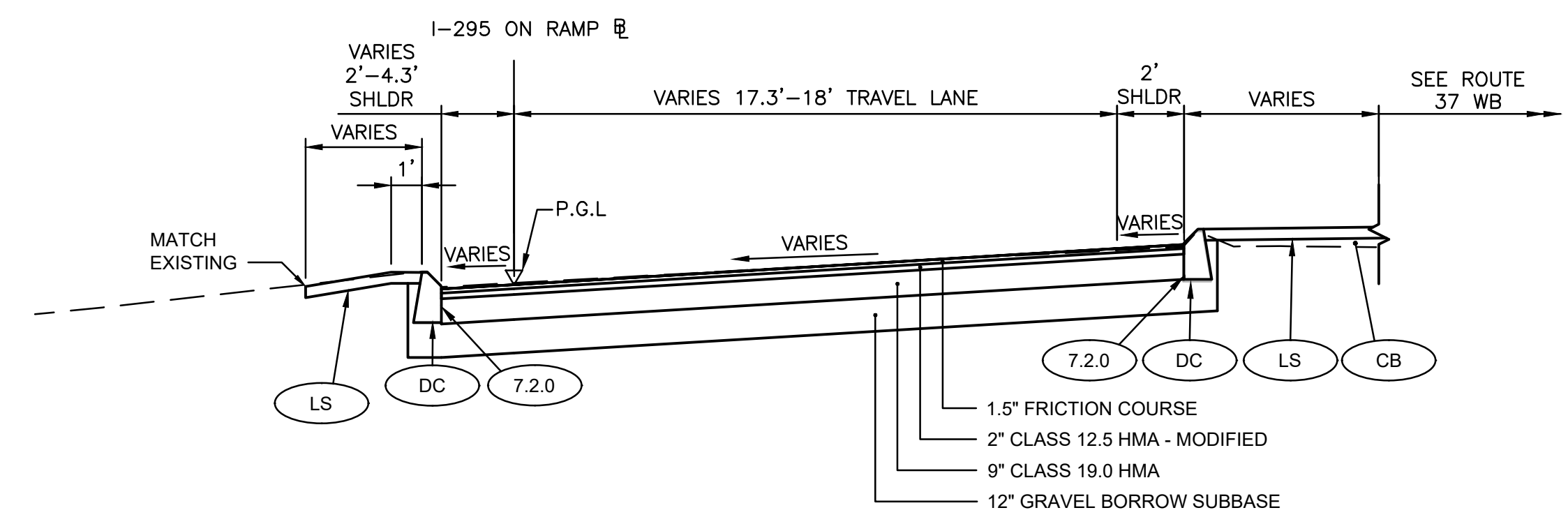
CRANSTON RHODE ISLAND

TYPICAL SECTION NO. 1



STATION 516+00 TO STATION 520+50
I-295 OFF RAMP
 SCALE: 1"=4'

*I-295 OFF RAMP
 STA 517+47 TO STA 519+69
 **I-295 OFF RAMP
 STA 518+09 TO STA 519+69



STATION 717+89 TO STATION 720+18
I-295 ON RAMP
 SCALE: 1"=4'

ADDENDUM NO. 1



DESIGNED BY:
 CHECKED BY:
 DATE:
 SHEET: 8
 OF:

SCALE: 1"=4'

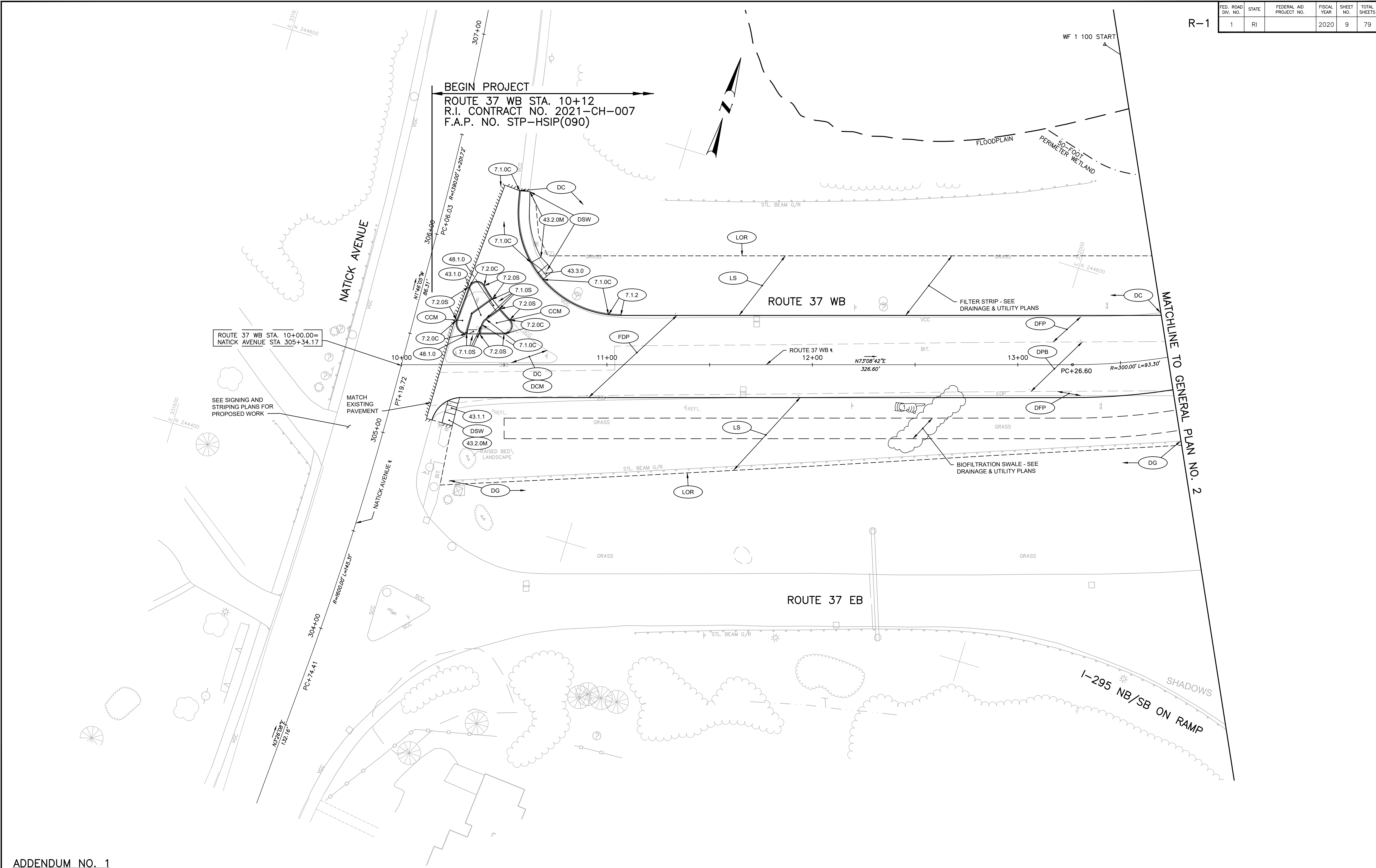
REVISIONS			REVISIONS		
NO.	DATE	BY	NO.	DATE	BY
1	11/6/20	VHB			

HSIP - INTERSECTION SAFETY -
 ROUTE 37 & NATICK AVENUE

CRANSTON RHODE ISLAND

TYPICAL SECTION NO. 2

FED. ROAD DW. NO.	STATE	FEDERAL AID PROJECT NO.	FISCAL YEAR	SHEET NO.	TOTAL SHEETS
1	RI		2020	9	79



ADDENDUM NO. 1



DESIGNED BY:
 CHECKED BY:
 DATE:
 SHEET: 9
 OF:

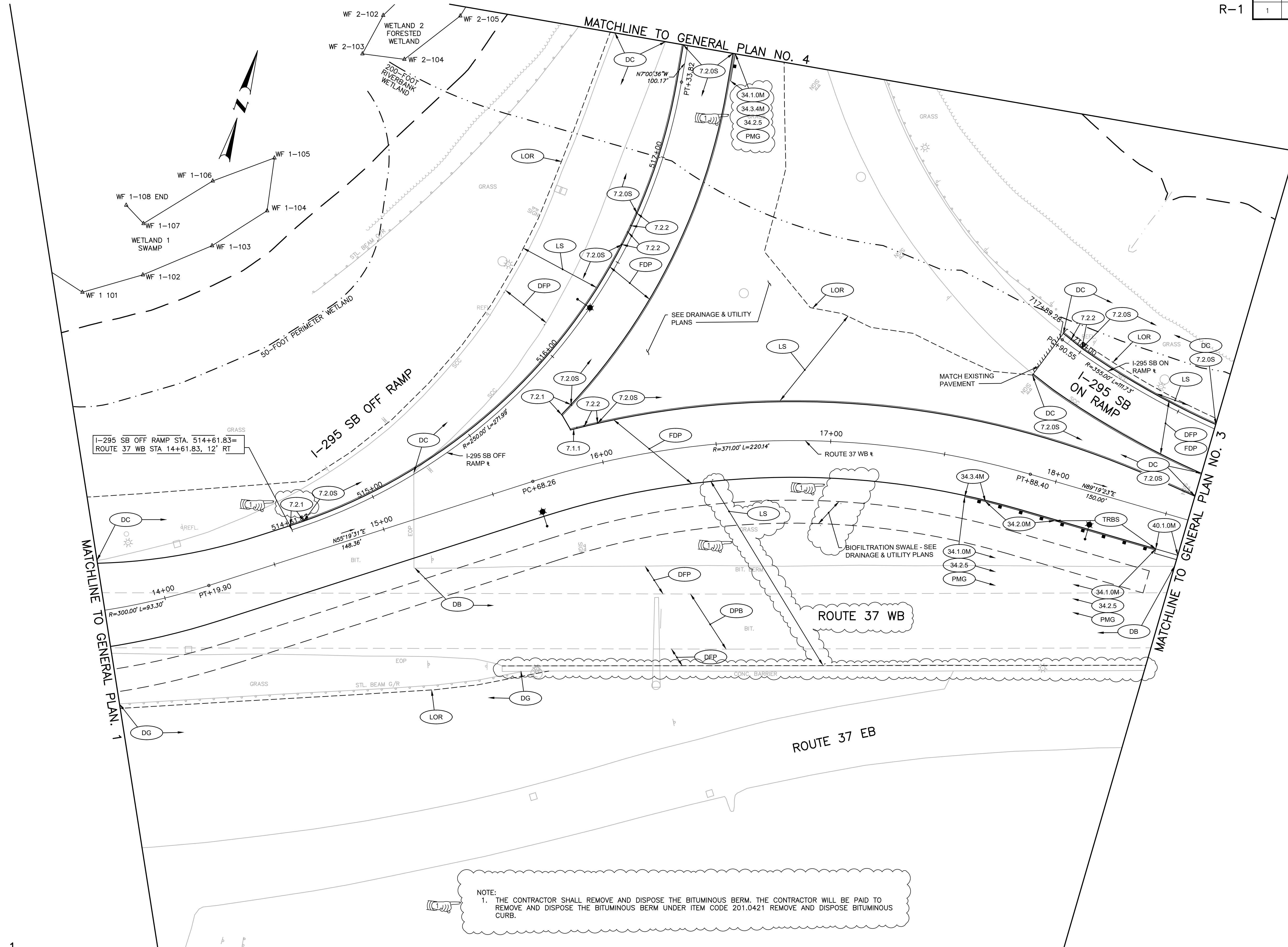
SCALE: 1"=20'

REVISIONS			REVISIONS		
NO.	DATE	BY	NO.	DATE	BY
1	11/6/20	VHB			

HSIP - INTERSECTION SAFETY -
 ROUTE 37 & NATICK AVENUE

GENERAL PLAN NO. 1

FED. ROAD DW. NO.	STATE	FEDERAL AID PROJECT NO.	FISCAL YEAR	SHEET NO.	TOTAL SHEETS
1	RI		2020	10	79



I-295 SB OFF RAMP STA. 514+61.83 = ROUTE 37 WB STA 14+61.83, 12' RT

NOTE:
 1. THE CONTRACTOR SHALL REMOVE AND DISPOSE THE BITUMINOUS BERM. THE CONTRACTOR WILL BE PAID TO REMOVE AND DISPOSE THE BITUMINOUS BERM UNDER ITEM CODE 201.0421 REMOVE AND DISPOSE BITUMINOUS CURB.

ADDENDUM NO. 1



DESIGNED BY:
 CHECKED BY:
 DATE:
 SHEET: 10
 OF:

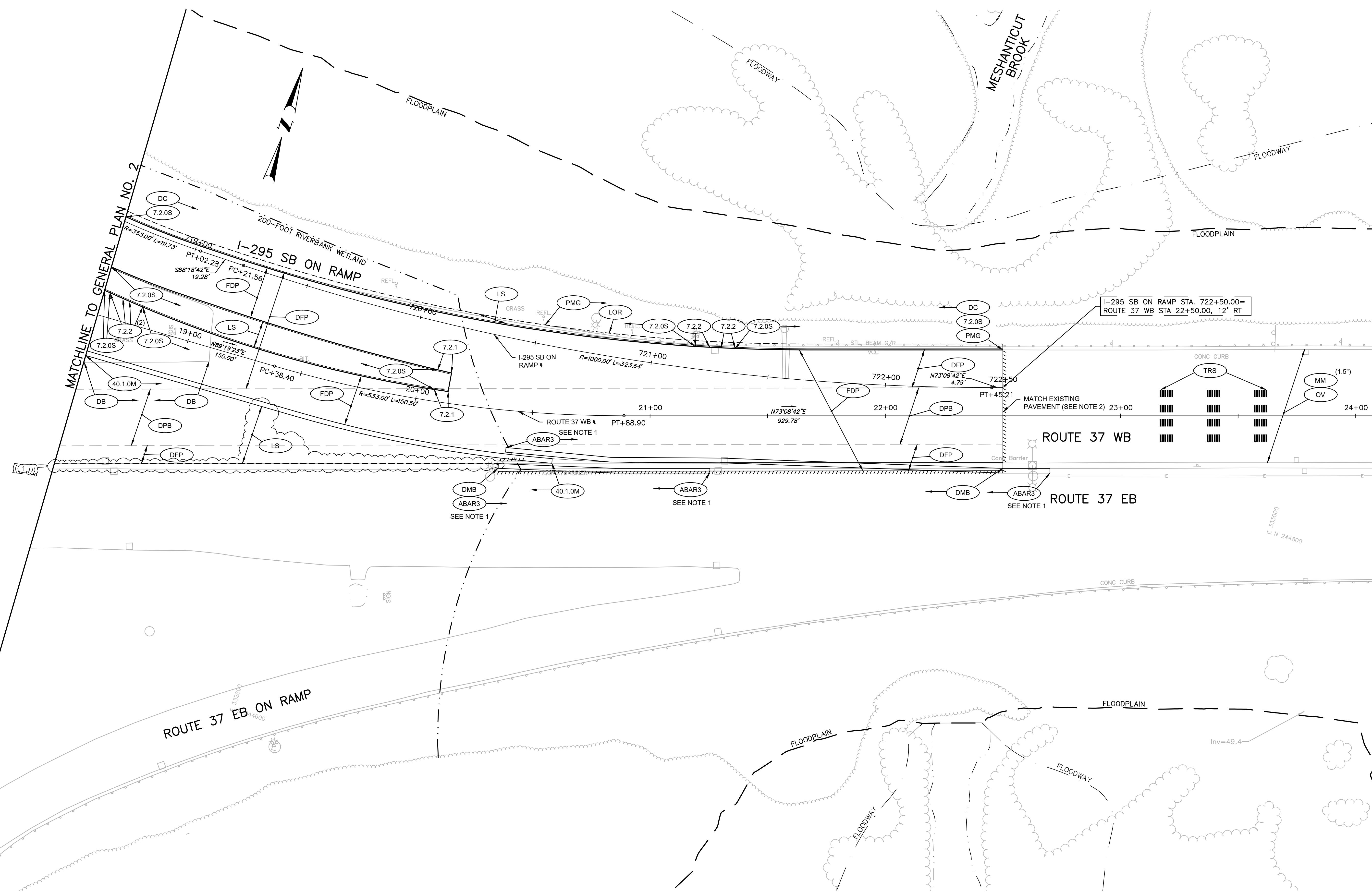
SCALE: 1"=20'

REVISIONS			REVISIONS		
NO.	DATE	BY	NO.	DATE	BY
1	11/6/20	VHB			

HSIP - INTERSECTION SAFETY - ROUTE 37 & NATICK AVENUE
 CRANSTON RHODE ISLAND

GENERAL PLAN NO. 2

FED. ROAD DIST. NO.	STATE	FEDERAL AID PROJECT NO.	FISCAL YEAR	SHEET NO.	TOTAL SHEETS
1	RI		2020	11	79



NOTE:
 1. THE TEMPORARY BARRIER SHALL BE LEFT IN PLACE BY THE CONTRACTOR UPON COMPLETION OF THE PROJECT.
 2. MILL AND OVERLAY ROUTE 37 WB SHALL BE MICROMILLED AND OVERLAID FROM STA. 22+50 TO STA 25+70 FOLLOWING COMPLETION OF TRAFFIC SHIFTS. PAVEMENT SHALL BE MILLED TO A DEPTH OF 1.5" AND OVERLAY SHALL BE 1.5" FRICTION COURSE.

ADDENDUM NO. 1



DESIGNED BY:
 CHECKED BY:
 DATE:
 SHEET: 11
 OF:

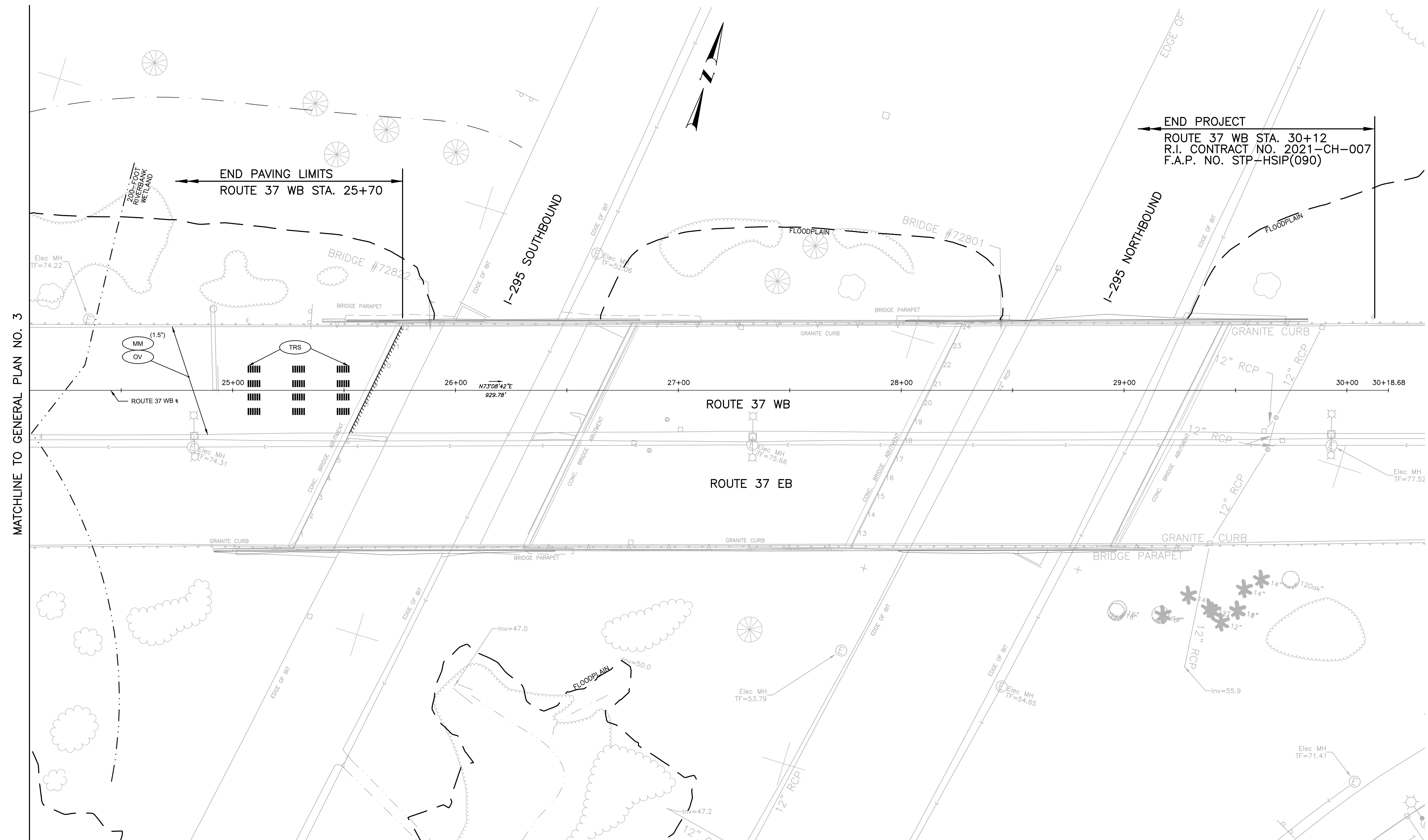
SCALE: 1"=20'

REVISIONS			REVISIONS		
NO.	DATE	BY	NO.	DATE	BY
1	11/6/20	VHB			

HSIP - INTERSECTION SAFETY - ROUTE 37 & NATICK AVENUE
 CRANSTON RHODE ISLAND

GENERAL PLAN NO. 3

FED. ROAD DIST. NO.	STATE	FEDERAL AID PROJECT NO.	FISCAL YEAR	SHEET NO.	TOTAL SHEETS
1	RI		2020	13	79



MATCHLINE TO GENERAL PLAN NO. 3

NOTE:
 1. MILL AND OVERLAY ROUTE 37 WB SHALL BE MICROMILLED AND OVERLAID FROM STA. 22+50 TO STA 25+70 FOLLOWING COMPLETION OF TRAFFIC SHIFTS. PAVEMENT SHALL BE MILLED TO A DEPTH OF 1.5" AND OVERLAY SHALL BE 1.5" FRICTION COURSE.

ADDENDUM NO. 1



RHODE ISLAND
 DEPARTMENT OF TRANSPORTATION

DESIGNED BY:
 CHECKED BY:
 DATE:
 SHEET: 13
 OF:

SCALE: 1"=20'

REVISIONS			REVISIONS		
NO.	DATE	BY	NO.	DATE	BY
1	11/6/20	VHB			

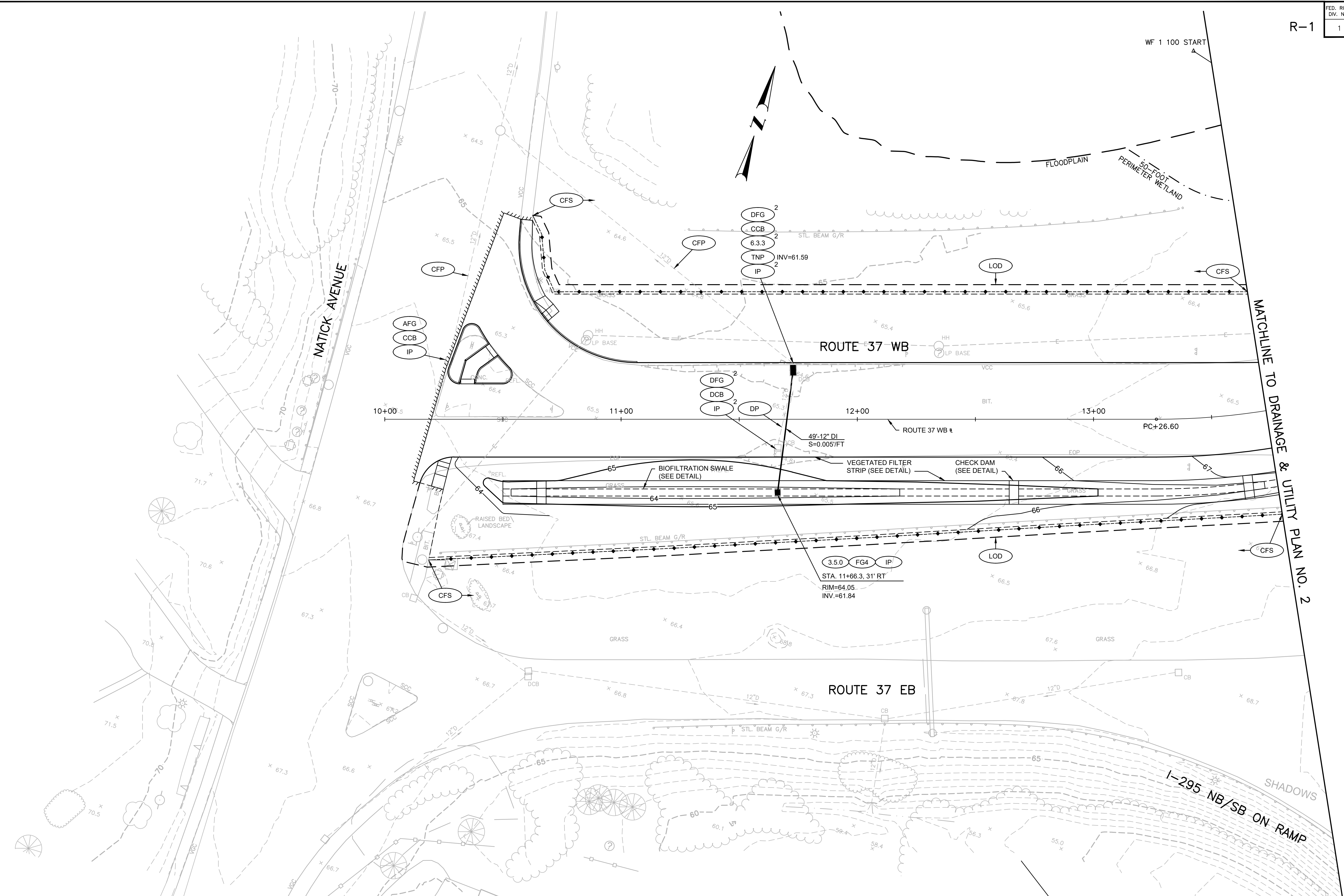
CRANSTON

HSP - INTERSECTION SAFETY -
 ROUTE 37 & NATICK AVENUE

RHODE ISLAND

GENERAL PLAN NO. 5

FED. ROAD DW. NO.	STATE	FEDERAL AID PROJECT NO.	FISCAL YEAR	SHEET NO.	TOTAL SHEETS
1	RI		2020	19	79



NOTE:
 1. INVERTS WERE DETERMINED FROM RECORD PLANS. THE CONTRACTOR SHALL OBTAIN THE EXISTING INVERTS FROM THE DRAINAGE STRUCTURES TO BE MODIFIED TO CONFIRM THE PROPOSED INVERTS ARE ACCEPTABLE TO MAINTAIN POSITIVE FLOW WITHIN THE SYSTEM. IF POSITIVE FLOW CANNOT BE MAINTAINED WITH THE INVERTS SHOWN ON THE PLANS, THE CONTRACTOR SHALL SUBMIT THE EXISTING INVERTS TO THE ENGINEER AS PART OF A REQUEST FOR INFORMATION. THE ENGINEER WILL REVISE THE PLANS TO PROVIDE POSITIVE FLOW WITHIN THE SYSTEM. THIS WORK WILL NOT BE PAID FOR SEPARATELY. THIS WORK SHALL BE INCLUDED IN THE COST OF THE PROPOSED WORK ITEMS ON THOSE STRUCTURES.
 2. THE CONTRACT DOCUMENTS INDICATE THE PROPOSED DRAINAGE STRUCTURES SHALL BE PRECAST. THE CONTRACTOR MAY BE REQUIRED OR ELECT TO BUILD THESE STRUCTURES FROM BLOCK AND BRICK AT NO ADDITIONAL COST TO THE STATE.

ADDENDUM NO. 1



RHODE ISLAND
 DEPARTMENT OF TRANSPORTATION

DESIGNED BY:
 CHECKED BY:
 DATE:
 SHEET: 19
 OF:

SCALE: 1"=20'

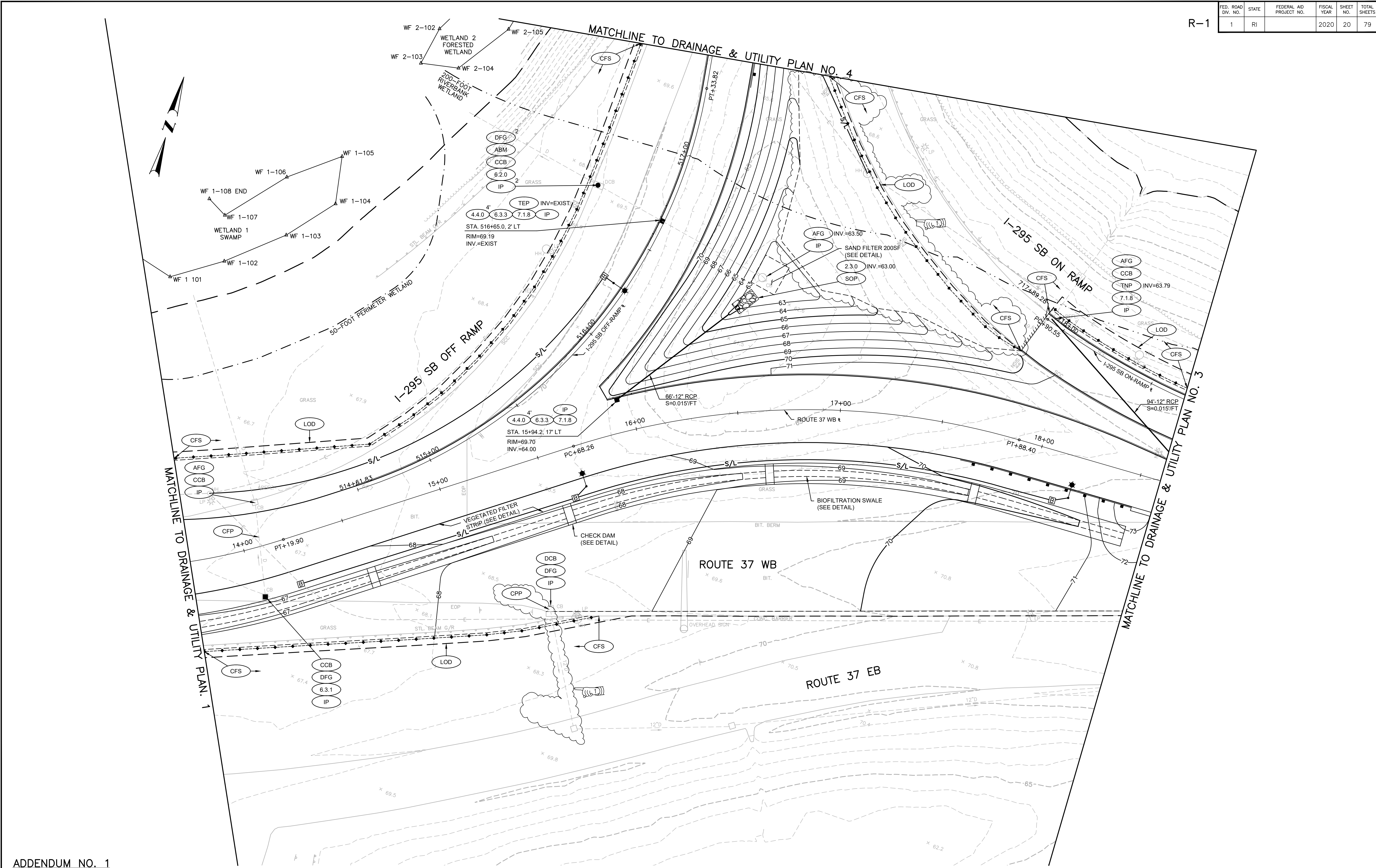
REVISIONS			REVISIONS		
NO.	DATE	BY	NO.	DATE	BY
1	11/6/20	VHB			

HSIP - INTERSECTION SAFETY -
 ROUTE 37 & NATICK AVENUE

CRANSTON RHODE ISLAND

DRAINAGE & UTILITY PLAN NO. 1

FED. ROAD DW. NO.	STATE	FEDERAL AID PROJECT NO.	FISCAL YEAR	SHEET NO.	TOTAL SHEETS
1	RI		2020	20	79



ADDENDUM NO. 1



RHODE ISLAND
DEPARTMENT OF TRANSPORTATION

DESIGNED BY:
CHECKED BY:
DATE:
SHEET: 20
OF:

SCALE: 1"=20'

REVISIONS			REVISIONS		
NO.	DATE	BY	NO.	DATE	BY
1	11/6/20	VHB			

HSP - INTERSECTION SAFETY -
ROUTE 37 & NATICK AVENUE

CRANSTON RHODE ISLAND

DRAINAGE & UTILITY PLAN NO. 2

FED. ROAD DW. NO.	STATE	FEDERAL AID PROJECT NO.	FISCAL YEAR	SHEET NO.	TOTAL SHEETS
1	RI		2020	22	79



MATCHLINE TO DRAINAGE & UTILITY PLAN NO. 2

ADDENDUM NO. 1



RHODE ISLAND
DEPARTMENT OF TRANSPORTATION

DESIGNED BY:
CHECKED BY:
DATE:
SHEET: 22
OF:

SCALE: 1"=20'

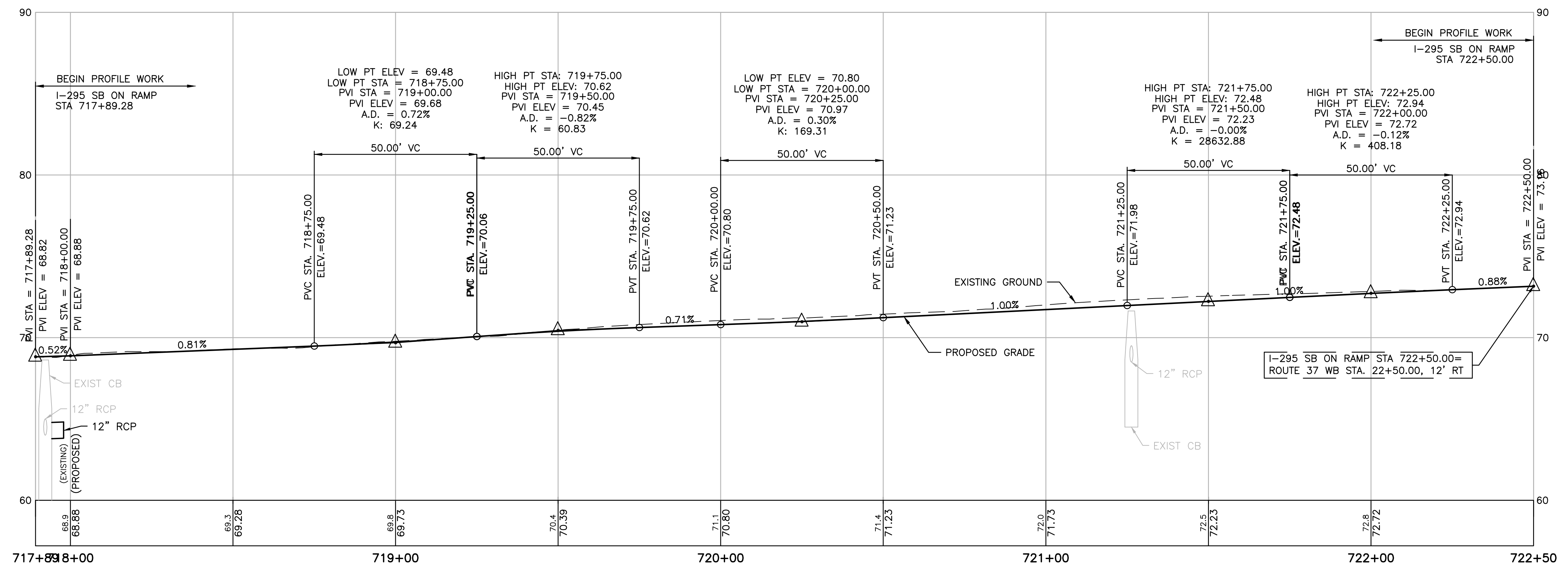
REVISIONS			REVISIONS		
NO.	DATE	BY	NO.	DATE	BY
1	11/6/20	VHB			

HSIP - INTERSECTION SAFETY -
ROUTE 37 & NATICK AVENUE

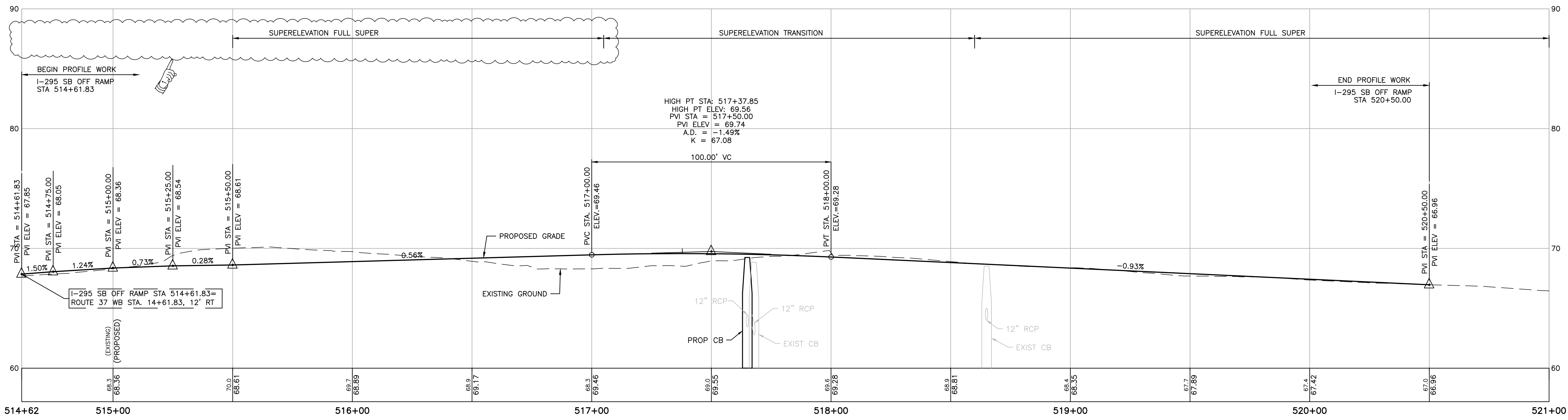
CRANSTON RHODE ISLAND

DRAINAGE & UTILITY PLAN NO. 4

FED. ROAD DIST. NO.	STATE	FEDERAL AID PROJECT NO.	FISCAL YEAR	SHEET NO.	TOTAL SHEETS
1	RI		2020	31	79



I-295 SB ON RAMP PGL PROFILE



I-295 SB OFF RAMP PGL PROFILE

ADDENDUM NO. 1



RHODE ISLAND
DEPARTMENT OF TRANSPORTATION

DESIGNED BY:
CHECKED BY:
DATE:
SHEET: 31
OF:

SCALE: HORIZ. 1"=20', VERT. 1"=4'

REVISIONS			REVISIONS		
NO.	DATE	BY	NO.	DATE	BY
1	11/6/20	VHB			

HSIP - INTERSECTION SAFETY -
ROUTE 37 & NATICK AVENUE

CRANSTON

RHODE ISLAND

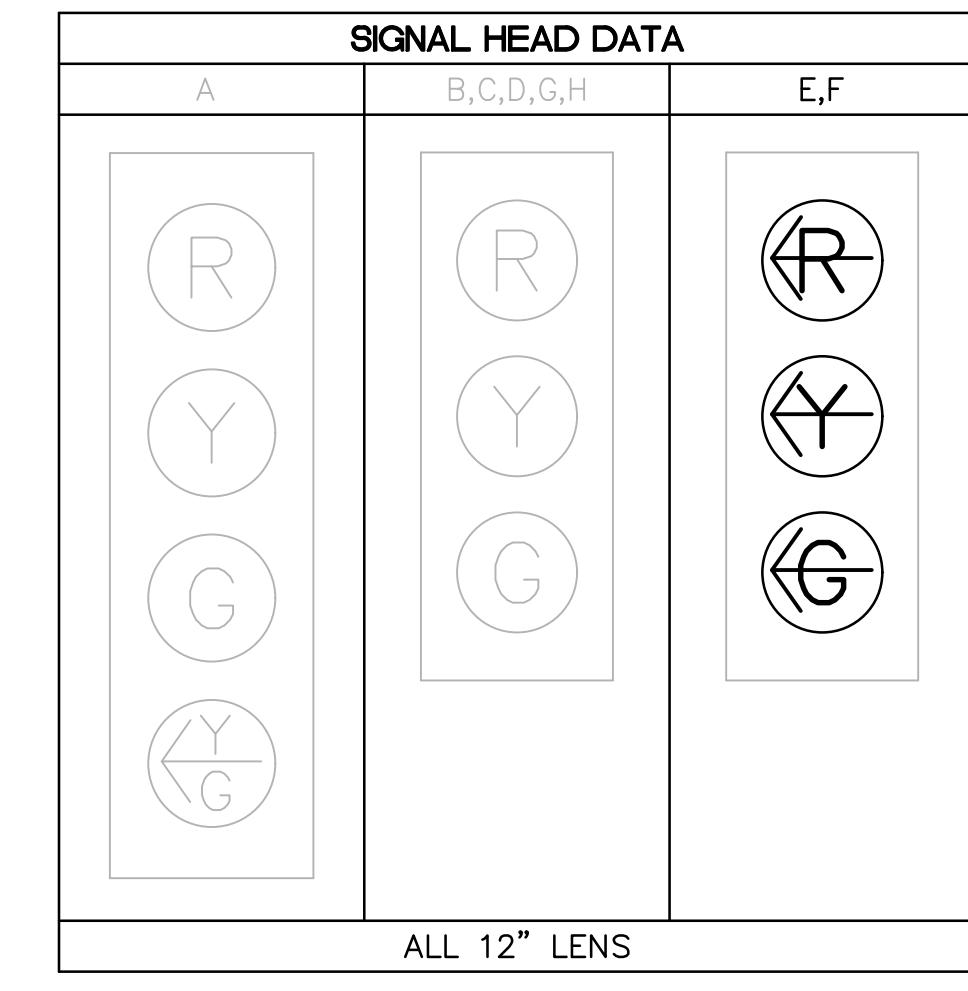
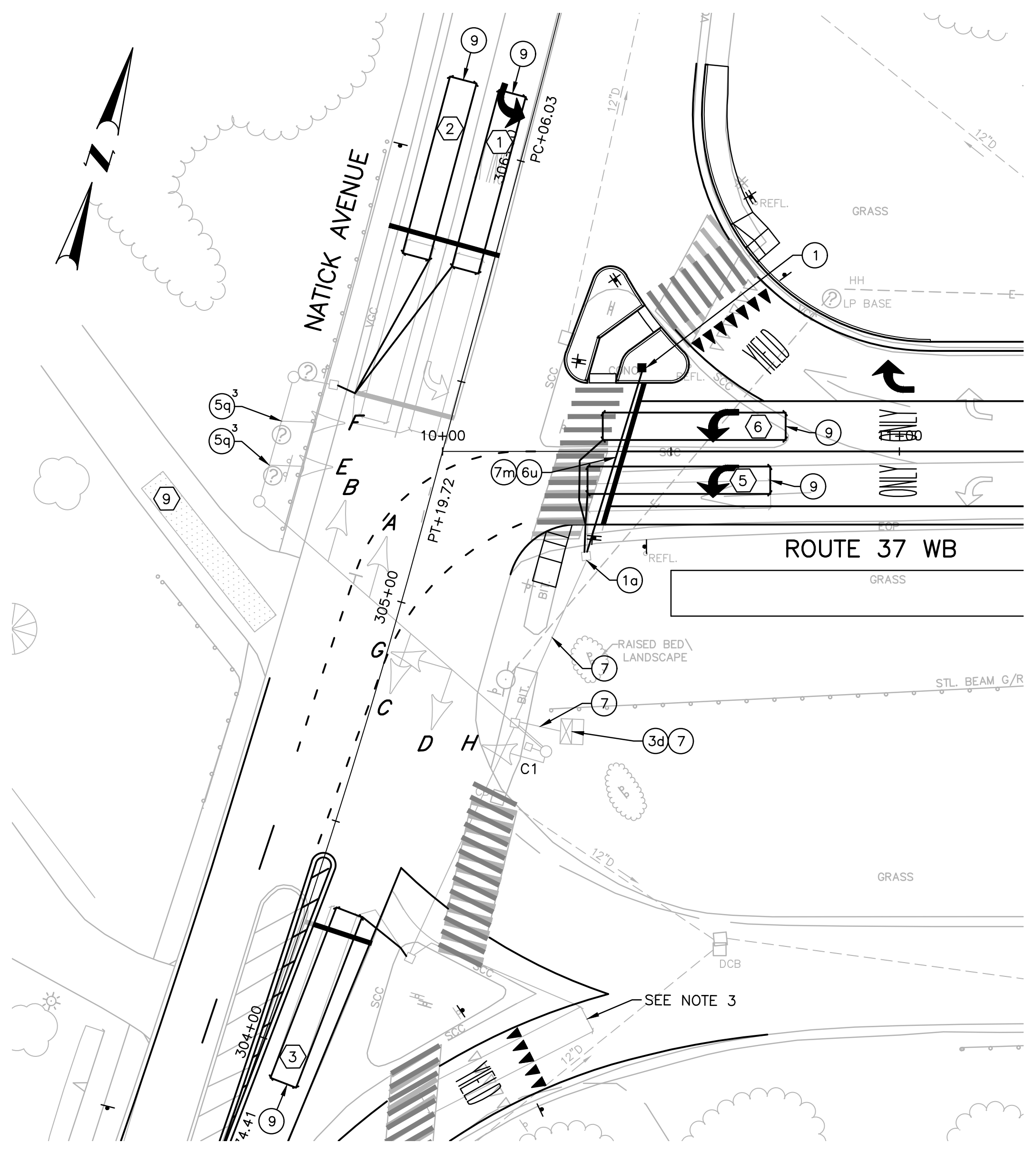
PROFILE NO. 4

FED. ROAD DW. NO.	STATE	FEDERAL AID PROJECT NO.	FISCAL YEAR	SHEET NO.	TOTAL SHEETS
1	RI		2020	48	79

ITEM NO.	ITEM CODE	ITEM DESCRIPTION
1	T05.0100	Precast Type "A" Handhole Std. 18.2.0
1a	T05.9901	Break Into Existing Handhole
3d	T12.9901	Modify Existing Traffic Signal Controller Cabinet
5q	T14.9901	Remove and Replace Signal Head LED Module
6u	T06.5430	3 Inch Schedule 80 Polyvinyl Chloride Plastic Conduit - Under Existing Pavement
7	T04.5302	14 AWG 2 Conductor Twisted Shielded Cable
7m	T04.5001	6 AWG Single Conductor Cable 600v Insulation
9	T13.1000	Traffic Detector - Loop Std. 19.6.0

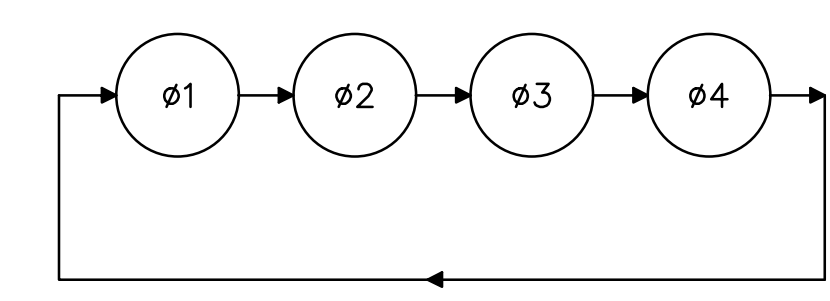
TRAFFIC SIGNAL CONSTRUCTION NOTES:

- THE EXISTING CONDUIT NETWORK SHOWN ON THIS PLAN IS BASED ON ASSUMED LOCATIONS AND SIZES. THE CONTRACTOR SHALL FIELD VERIFY THE EXISTING CONDUIT LOCATIONS AND SIZES FOR ACCURACY AND ADEQUACY PRIOR TO PERFORMING THE WORK.
- SEE STANDARD NOTES PLAN AND JOB SPECIFIC PLAN SYMBOLS, LEGEND & NOTES PLAN FOR ADDITIONAL INFORMATION.
- THE CONTRACTOR SHALL DISCONNECT THE LOOP LEAD IN CABLE AND REMOVE ALL CONTROLLER PROGRAMMING FOR THE LOOP DETECTOR.



- NOTES:**
- ALL TRAFFIC SIGNAL HEADS ARE EXISTING.
 - ALL PROPOSED RED, YELLOW, AND GREEN SIGNAL DISPLAYS SHALL BE EQUIPPED WITH LED MODULES.
 - REPLACE EXISTING CIRCULAR LED MODULES WITH LEFT ARROW LED MODULES ON TRAFFIC SIGNAL HEADS E & F.

PHASE SEQUENCE DIAGRAM



SEQUENCE AND TIMING DIAGRAM																			
APPROACH	DIRECTION	HOUSING	ø1				ø2				ø3				ø4				FLASHING OPERATION
MINIMUM INTERVAL			6				10				6				6				
VEHICLE EXTENSION			2.6				2.4				2.4				2.4				
MAXIMUM 1			30				30				10				30				
MAXIMUM 2			20				20				10				50				
YELLOW CLEARANCE			3.5				3.5				4				3				
RED CLEARANCE				3.5				3.5				2.5				3			
NATICK AVENUE	SB-LT	A	G	Y*	R*		G	Y	R	R	R	R	R	R	R	R	R	R	FY
NATICK AVENUE	SB	B	G	Y*	R*		G	Y	R	R	R	R	R	R	R	R	R	R	FY
NATICK AVENUE	NB	C,D	R	R	R		G	Y	R	R	R	R	R	R	R	R	R	R	FY
ROUTE 37 WB	WB	E,F	←R	←R	←R		←R	←R	←R	←R	←G	←Y	←R	←FR					
DRIVEWAY	EB	G,H	R	R	R		R	R	R	G	Y	R	R	R	R	R	R	R	FR
DETECTOR			NON-LOCK				NON-LOCK				NON-LOCK				NON-LOCK				
RECALL			OFF				SOFT				OFF				OFF				
			ø1				ø2				ø3				ø4				ø5-ø8
			↓				↓ PERM				↓				↓				NOT USED

- SEQUENCE AND TIMING NOTES:**
- FLASHING OPERATION PER M.U.T.C.D.
 - MAXIMUM 1 = NORMAL OPERATION
 - MAXIMUM 2 = M-F 3:00PM-6:00PM
 - PERM = PERMISSIVE
 - Y = YIELD
 - * = SHALL REMAIN G IF PHASE 2 IS NEXT

DETECTOR DATA						
DETECTOR NO.	NO. SECTION / SIZE	RELAY NUMBER	SLOT	DELAY (SEC)	CALL PHASE	REMARKS
1	1-6'x40'	1	2	3	ø1/ø2	PROPOSED
2	1-6'x40'	1	2	3	ø2	PROPOSED
3	1-6'x40'	1	2	3	ø2	PROPOSED
5	1-6'x40'	2	4	3	ø4	PROPOSED
6	1-6'x40'	2	4	3	ø4	PROPOSED

- NOTES:**
- LOOP 1 SHALL CALL/EXTEND PHASE 1 AND THEN SWITCH TO CALL/EXTEND PHASE 2.
 - CONTRACTOR SHALL PROVIDE A NEW CABINET DOOR STICKER WITH UPDATED DETECTOR INFORMATION.

VIDEO DETECTOR DATA					
DETECTOR ZONE NO.	CAMERA NUMBER	APPROX. SIZE DET. ZONE	DELAY (SEC)	CALL PHASE	REMARKS
9	1	6'x40'	3	ø3	EXISTING

ADDENDUM NO. 1

TRAFFIC SIGNAL NO. 503



DESIGNED BY:
CHECKED BY:
DATE:
SHEET: 48
OF:

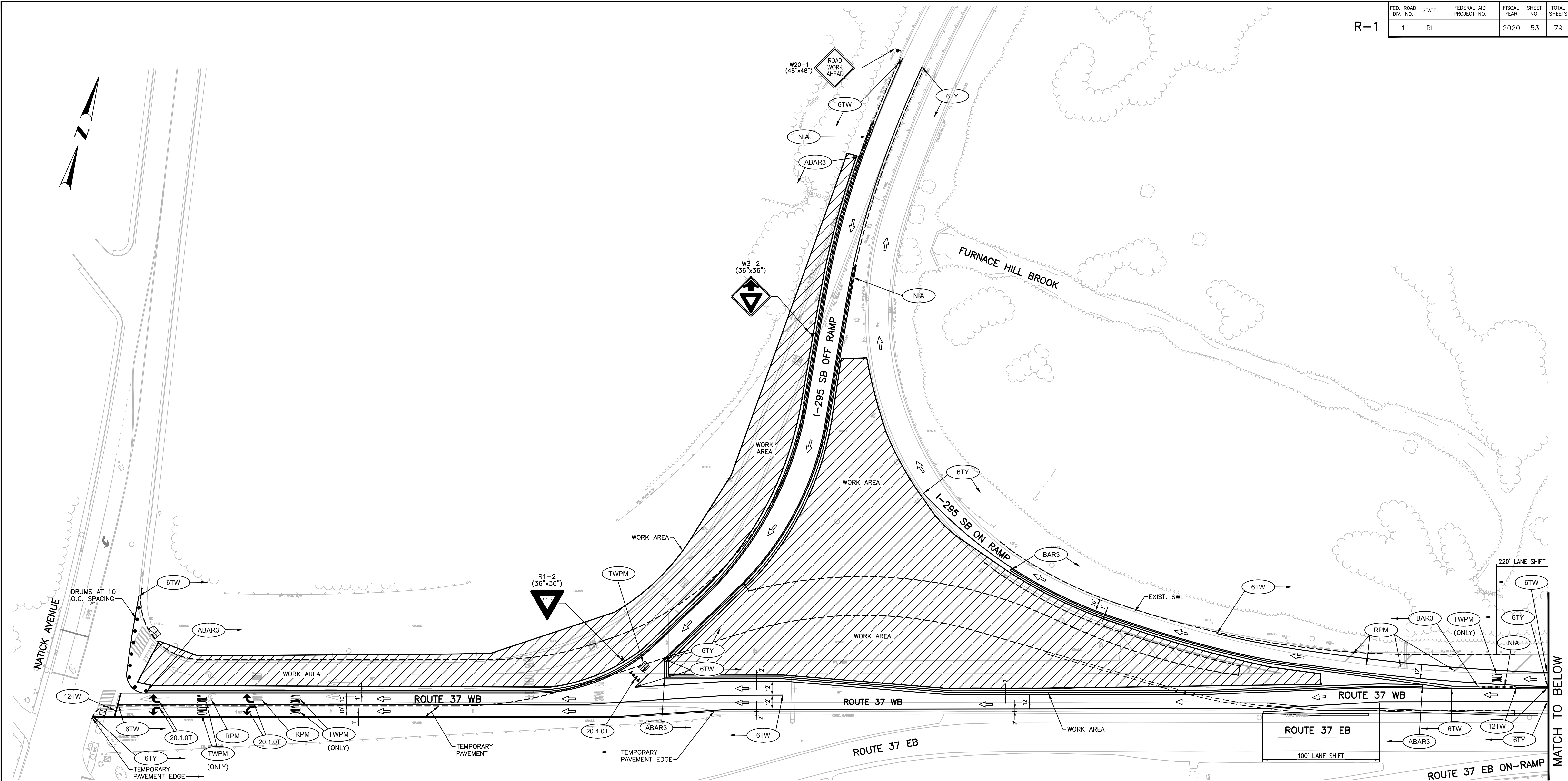
SCALE: 1"=20'

REVISIONS					
NO.	DATE	BY	NO.	DATE	BY
1	11/6/20	VHB			

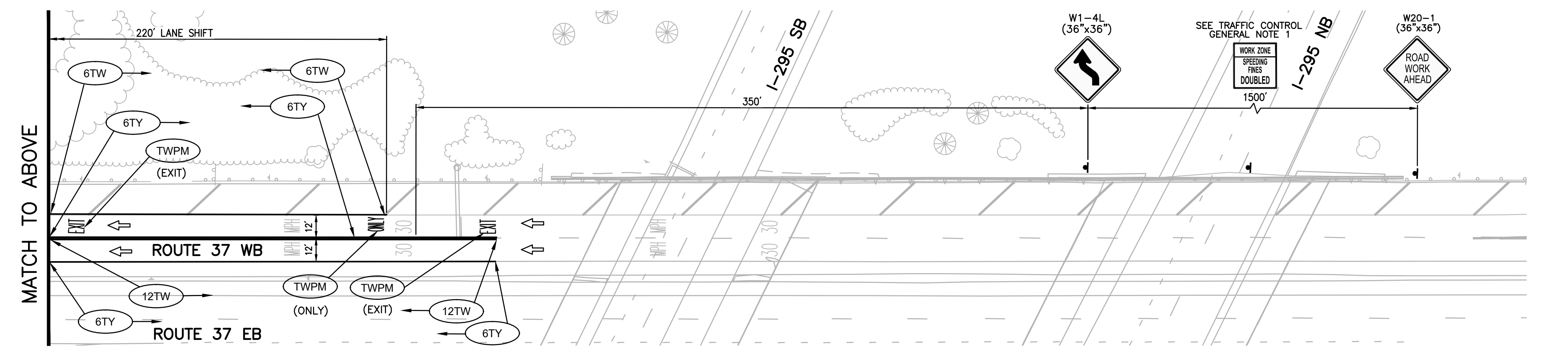
HSIP - INTERSECTION SAFETY - ROUTE 37 & NATICK AVENUE

TRAFFIC SIGNAL PLAN
NATICK AVENUE AT ROUTE 37

FED. ROAD DW. NO.	STATE	FEDERAL AID PROJECT NO.	FISCAL YEAR	SHEET NO.	TOTAL SHEETS
1	RI		2020	53	79



NOTES:
 1. PAVEMENT MARKINGS THAT ARE IN CONFLICT WITH THE PROPOSED PHASE 3 PAVEMENT MARKINGS SHALL BE REMOVED. THIS WORK SHALL BE PAID FOR UNDER THE RESPECTIVE PAVEMENT MARKING REMOVAL ITEMS.



ADDENDUM NO. 1



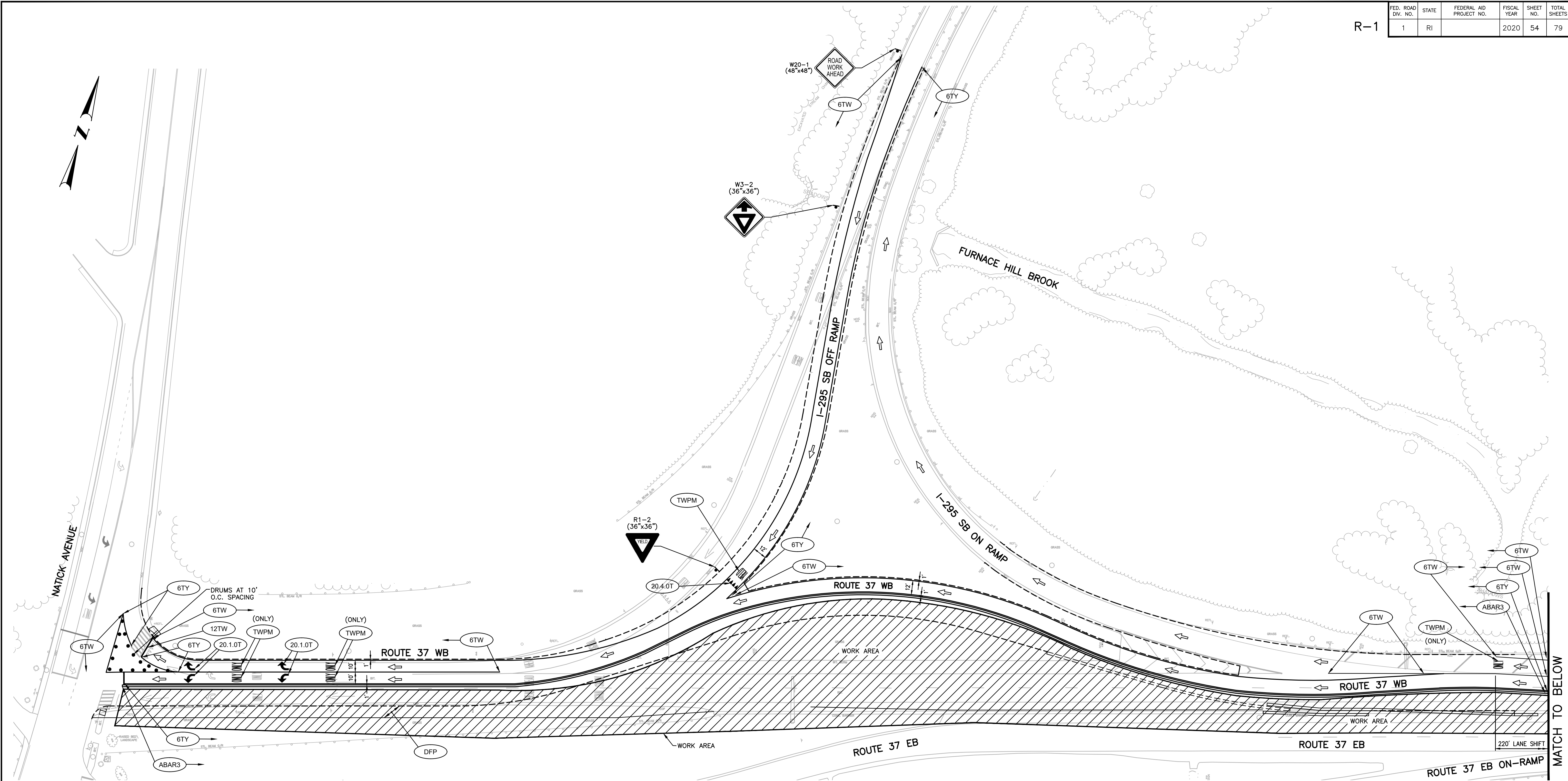
DESIGNED BY:
 CHECKED BY:
 DATE:
 SHEET: 53
 OF:

SCALE: 1"=40'

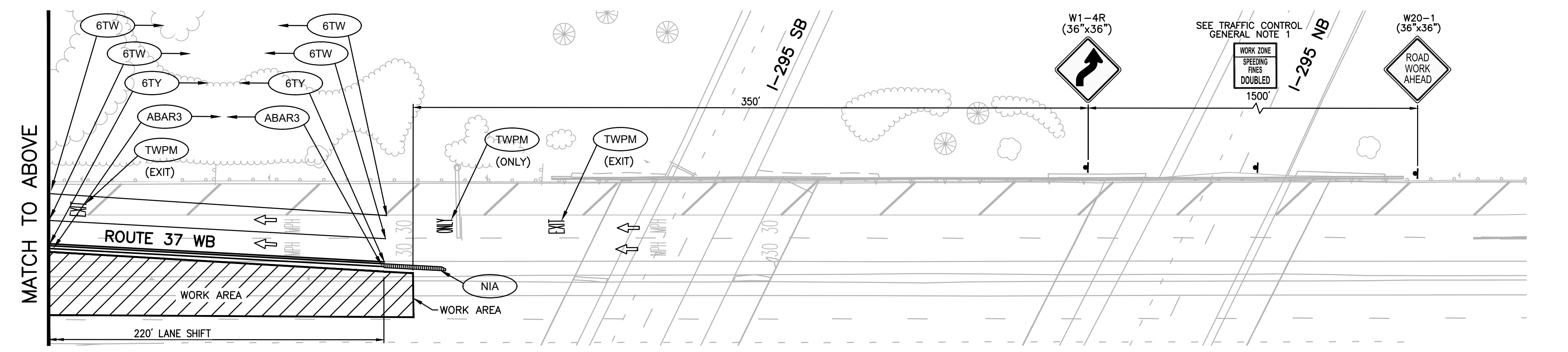
REVISIONS			REVISIONS		
NO.	DATE	BY	NO.	DATE	BY
1	11/6/20	VHB			

HSIP - INTERSECTION SAFETY -
 ROUTE 37 & NATICK AVENUE
 CRANSTON RHODE ISLAND
TRAFFIC CONTROL PLAN NO. 5
PHASE 3

FED. ROAD DIST. NO.	STATE	FEDERAL AID PROJECT NO.	FISCAL YEAR	SHEET NO.	TOTAL SHEETS
1	RI		2020	54	79



NOTES:
 1. PAVEMENT MARKINGS THAT ARE IN CONFLICT WITH THE PROPOSED PHASE 4 PAVEMENT MARKINGS SHALL BE REMOVED. THIS WORK SHALL BE PAID FOR UNDER THE RESPECTIVE PAVEMENT MARKING REMOVAL ITEMS.



ADDENDUM NO. 1



DESIGNED BY:
 CHECKED BY:
 DATE:
 SHEET: 54
 OF:

SCALE: 1"=40'

REVISIONS			REVISIONS		
NO.	DATE	BY	NO.	DATE	BY
1	11/6/20	VHB			

HSIP - INTERSECTION SAFETY -
 ROUTE 37 & NATICK AVENUE
 CRANSTON RHODE ISLAND
TRAFFIC CONTROL PLAN NO. 6
PHASE 4