

February 9, 2018

STATE OF RHODE ISLAND AND PROVIDENCE PLANTATION
DEPARTMENT OF ADMINISTRATION

DIVISION OF PURCHASES BID NO. 7584481

RHODE ISLAND DEPARTMENT OF TRANSPORTATION

RHODE ISLAND CONTRACT NO.2017-CB-078

FEDERAL-AID PROJECT NO. FAP Nos: BHO-0425(001)

Centerville Road Bridge No. 425 Rehabilitation

Centerville Road (Rte. 117) at Bald Hill Road (Rte. 2)

CITY/TOWN OF Warwick

COUNTY OF KENT

NOTICE TO PROSPECTIVE BIDDERS

ADDENDUM NO. 4 Prospective bidders and all concerned are hereby notified of the following changes in the Plans, Specifications, Proposal and Distribution of Quantities for this contract. These changes shall be incorporated in the Plans, Specifications, Proposal and Distribution of Quantities, and shall become an integral part of the Contract Documents.

A. Job Specific Specifications

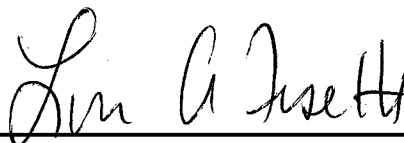
1. JS-60

Delete page JS-60 in its entirety and replace it with revised page JS-60(R-1) attached to this Addendum No. 4. The Basis of Payment for Item Code 702.9910 has been revised

B. Drawings/Plans - Change/Addition

1. Sheet No. 8 - Sequence of Construction

Revise Sheet No. 8(R-1) as shown on Sketch No. 1(R-2) attached to this Addendum No. 4. Staged Construction Note No. 7 has been revised



RI Department of Transportation

Manager, Division of Project Management

ADDENDUM NO. 4

ATTACHMENTS

“Install 8" Steel Gas Main and Fittings on Bridge” will be measured by the number of linear feet actually installed and accepted, measured along the centerline of the pipe.

BASIS OF PAYMENT:

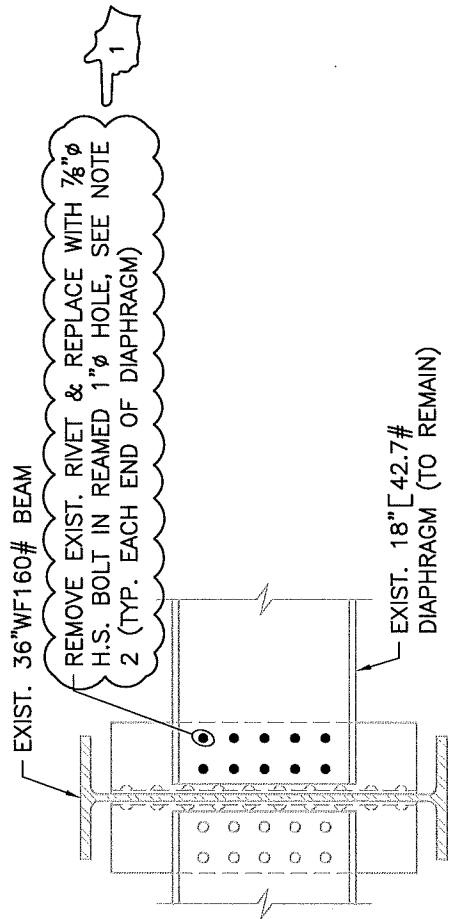
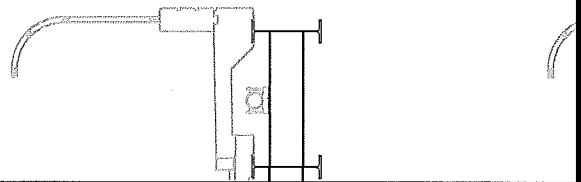
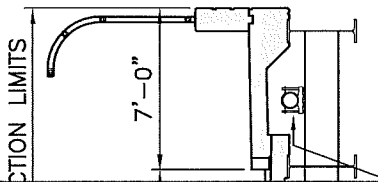
The accepted quantity of “Install 8" Polyethylene Gas Main and Fittings on Approaches” will be paid for at the contract unit price per linear foot as listed in the Proposal. The price so-stated shall constitute full and complete compensation for all loading and hauling materials supplied by the Gas Company, furnishing all materials not supplied by the Gas Company, and for all equipment, tools and labor, including saw cutting and removal & disposal of pavement, excavation, padding sand, backfilling, and pavement patching (temporary and permanent), as detailed on the plans and described in these Special Provisions, complete, in place, and accepted by the Gas Company and the Engineer.

The accepted quantity of “Install 8" Welded Steel Gas Main and Fittings on Bridge” will be paid for at the contract unit price per linear foot as listed in the Proposal. The price so-stated shall constitute full and complete compensation for loading and hauling materials supplied by the Gas Company, furnishing all materials not supplied by the Gas Company, and for all equipment, tools and labor, including, but not limited to, installing hangers on bridge and casing pipes thru backwalls, as detailed on the plans and described in these Special Provisions, complete, in place, and accepted by the Gas Company and the Engineer.

The above pay items shall include installation of all materials supplied by the gas company.

STAGED CONSTRUCTION NOTES

1. ADJACENT SECTIONS ARE DRAWN LOOKING WEST (UP STATION).
2. TRAFFIC CONTROL DEVICES SHALL BE INSTALLED AS SHOWN ON THE MAINTENANCE & PROTECTION OF TRAFFIC PLANS PRIOR TO BEGINNING WORK ON ANY STAGE OF DEMOLITION/CONSTRUCTION.
3. PROTECTIVE SCREEN AND ONE BAR RAIL SHALL BE INSTALLED ALONG THE PARAPETS PRIOR TO OPENING THE ADJACENT SIDEWALK TO PEDESTRIANS.
4. SEE ABUTMENT DEMOLITION AND RECONSTRUCTION PLANS FOR STAGE LIMITS FOR THE ABUTMENT CONSTRUCTION.
5. DURING STAGE 3 RECONSTRUCTION, AFTER INSTALLATION OF FIRST 1½" THICK LAYER OF HOT MIX ASPHALT IS PLACED, REMOVE 1½" LAYER OF THE HOT MIX ASPHALT THAT WAS PLACED DURING STAGE 1 & 2 RECONSTRUCTION AND THEN PLACE A FINAL 1½" LAYER OF HOT MIX ASPHALT OVER THE ENTIRE ROADWAY WIDTH. REMOVAL SHALL BE IN ACCORDANCE WITH SECTION 839 OF THE RI STANDARD SPECIFICATIONS.
6. THE ENTIRE LENGTH OF THE ASPHALTIC EXPANSION JOINTS AT THE ABUTMENTS SHALL BE PLACED AFTER PLACEMENT OF THE FINAL LAYER OF HOT MIX ASPHALT.
7. THERE ARE ITEMS OF WORK NOT AFFECTED BY THE STAGES OF CONSTRUCTION SHOWN HEREIN. THESE ITEMS INCLUDE, BUT NOT LIMITED TO, HIGHWAY APPROACH WORK, INSTALLATION OF ELASTOMERIC BEARING ASSEMBLIES, AND CLEANING & PAINTING OF THE EXISTING STRUCTURAL STEEL.



Gordon R. Archibald, Inc.
Civil and Environmental Engineers

DATE: 2/09/2018

TITLE OF SKETCH
REHABILITATION OF
CENTERVILLE ROAD BRIDGE NO. 425
SEQUENCE OF CONSTRUCTION

ADDENDUM NUMBER 4

R.I. CONTRACT NO.
2017-CB-078

SKETCH NO.
1

REVISION TO
SHEET NO. 8